





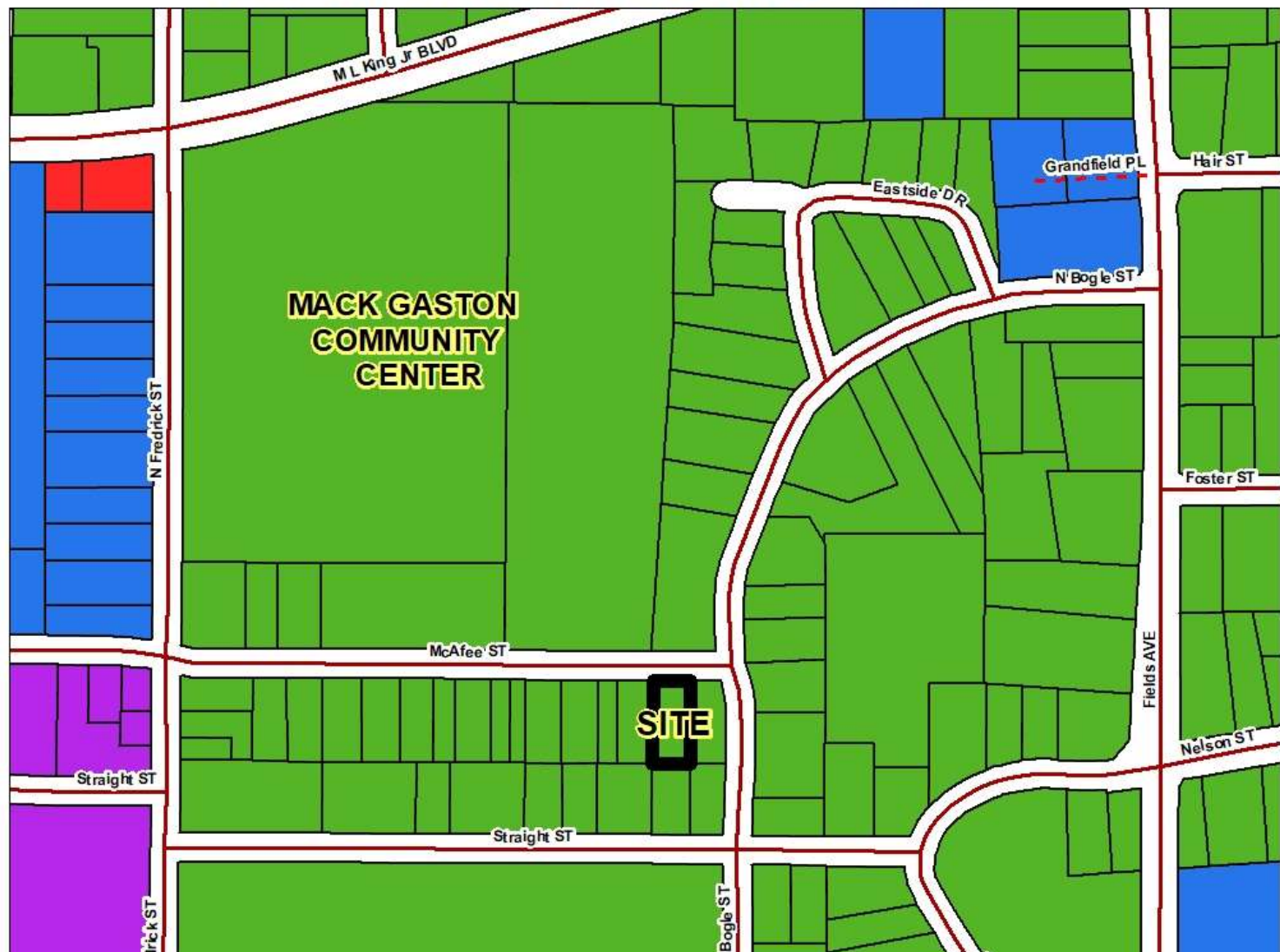
# Blackwell Rezoning Request R-3, Medium Density Residential to C-1, Neighborhood Commercial CITY OF DALTON JURISDICTION



**Unified Zoning**

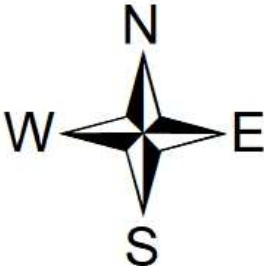
-  Medium Density Single Family Residential (R-3)
-  High Density Residential (R-7)
-  General Commercial (C-2)
-  Heavy Manufacturing (M-2)

**FEET**  
**200**

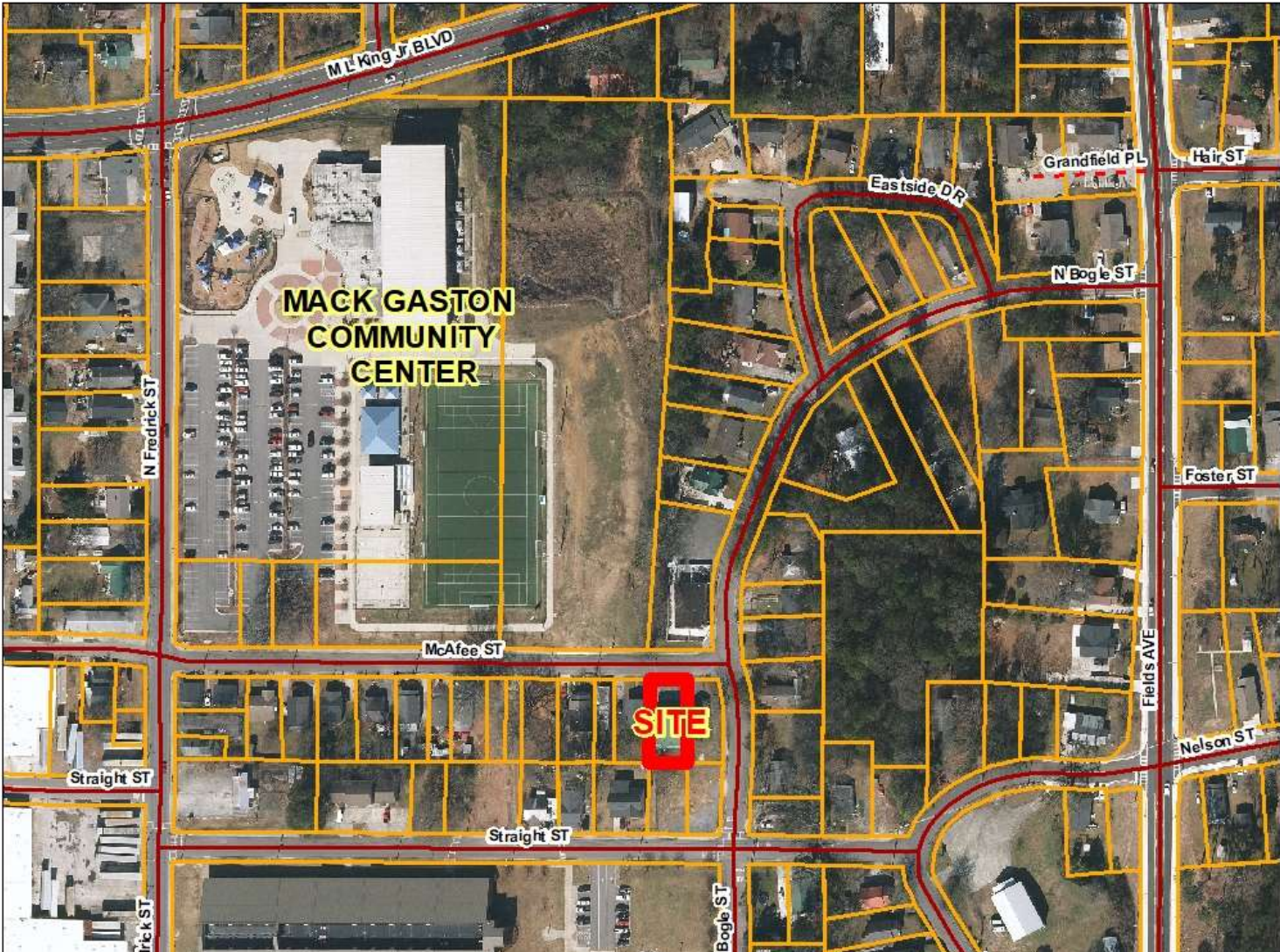




**Blackwell Rezoning Request  
R-3, Medium Density Residential  
to  
C-1, Neighborhood Commercial  
CITY OF DALTON JURISDICTION**

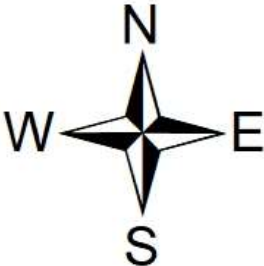


**FEET  
200**

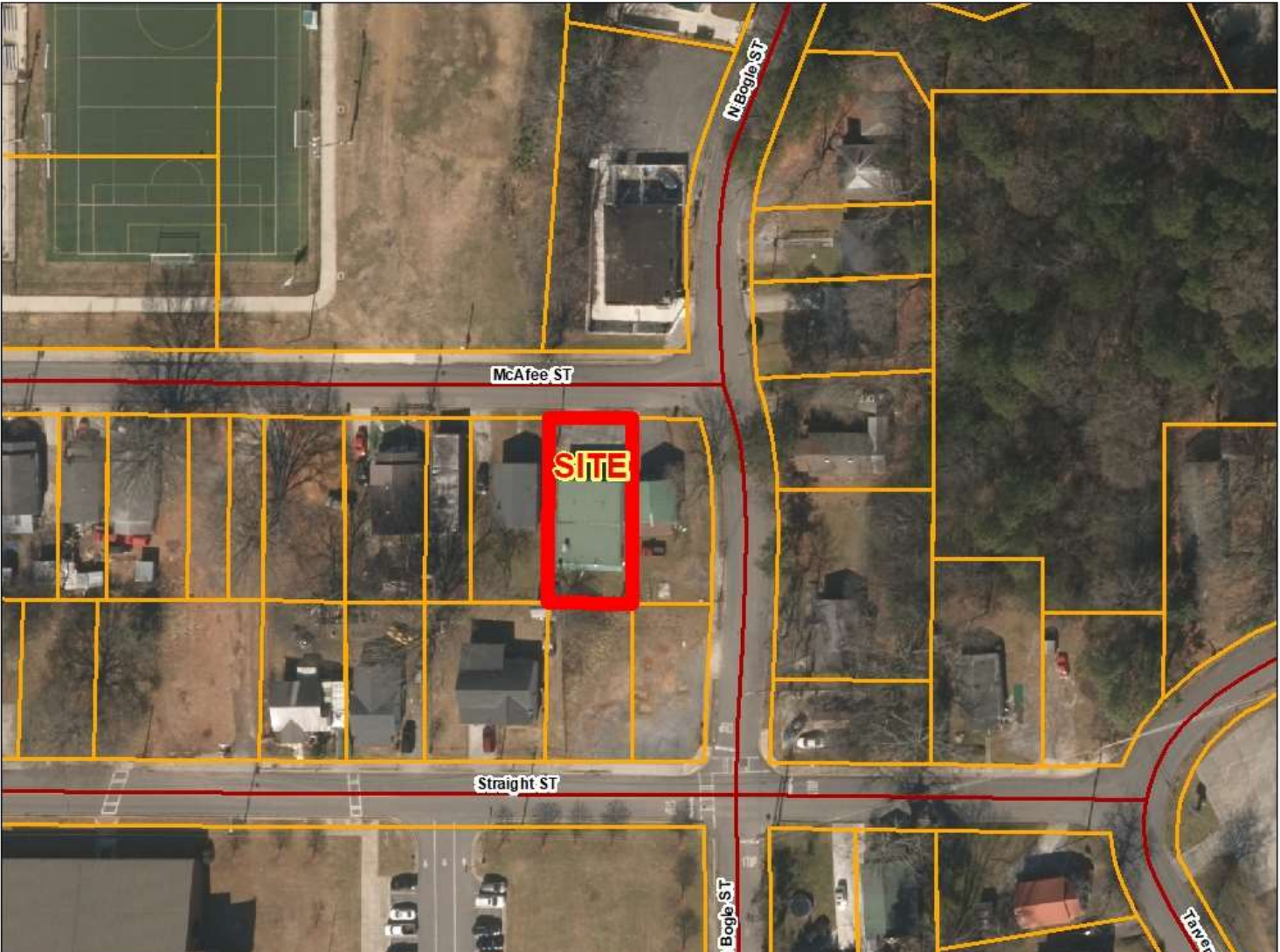




**Blackwell Rezoning Request  
R-3, Medium Density Residential  
to  
C-1, Neighborhood Commercial  
CITY OF DALTON JURISDICTION**



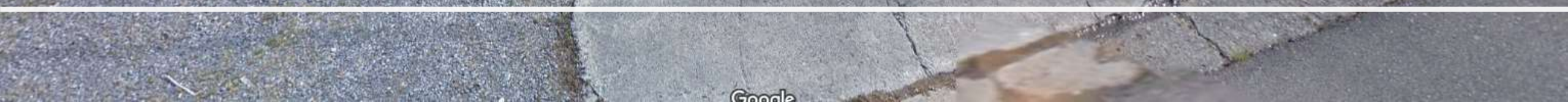
**FEET  
100**







View facing the subject property from McAfee St.





# Blackwell Rezoning Request R-3, Medium Density Residential to C-1, Neighborhood Commercial CITY OF DALTON JURISDICTION



**FUTURE DEVELOPMENT MAP**

-  Preserve
-  Town Neighborhood Revitalization

**FEET**  
**200**

