



Dalton Police Department Public Safety Commission Meeting

July 15, 2025

TABLE OF CONTENTS

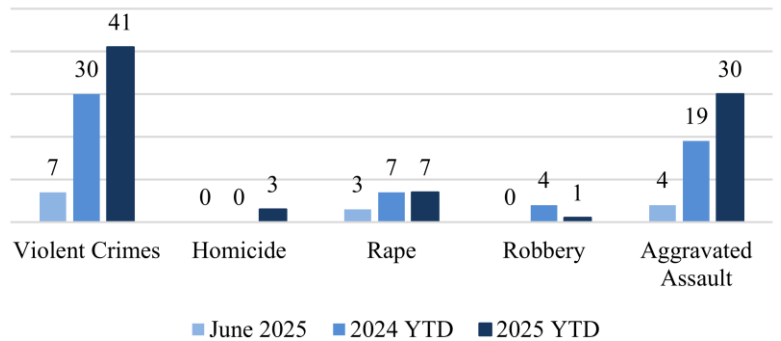
CRIME STATISTICS

CRASH STATISTICS

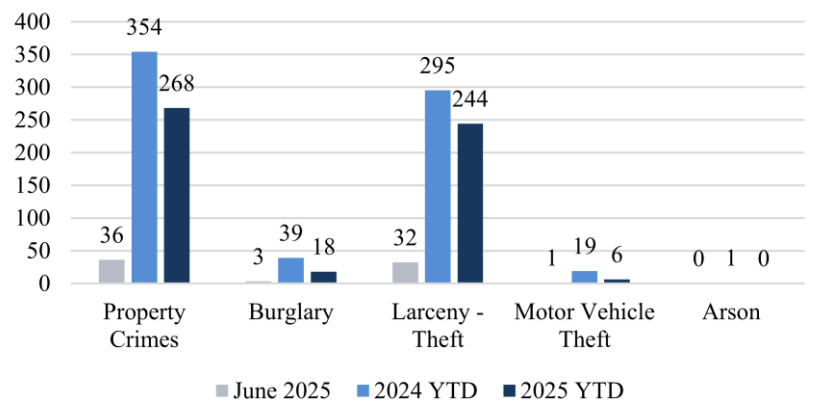
FINANCIAL STATISTICS

JUNE 2025

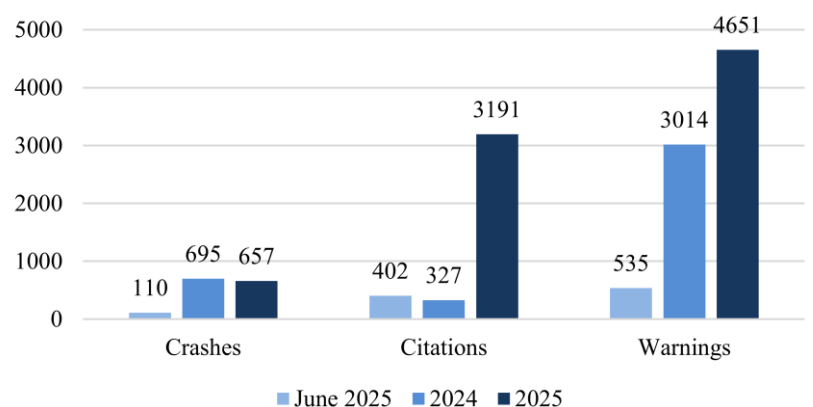
Violent Crimes



Property Crimes



Traffic





PART 1 CRIMES

June 2025

<u>Total Part 1 Crimes</u>			<u>2024 YTD</u>	<u>2025 YTD</u>	<u>YTD Change</u>
			384	309	-19.53%
<u>Violent Crimes</u>		<u>Current</u>	<u>2024 YTD</u>	<u>2025 YTD</u>	<u>YTD Change</u>
		7	30	41	36.67%
Homicide		0	0	3	Undefined
Rape		3	7	7	0.00%
Robbery		0	4	1	-75.00%
Aggravated Assault		4	19	30	57.89%
<u>Property Crimes</u>		<u>Current</u>	<u>2024 YTD</u>	<u>2025 YTD</u>	<u>YTD Change</u>
		36	354	268	-24.29%
Burglary		3	39	18	-53.85%
Larceny-Theft		32	295	244	-17.29%
Motor Vehicle Theft		1	19	6	-68.42%
Arson		0	1	0	-100.00%

There were 43 Part 1 crimes in June 2025. That is a decrease of approximately 38.6% compared to 70 in June 2024. Total Part 1 crimes YTD have decreased by approximately 19.53% when compared to 2024.

Violent crimes have increased by approximately 36.67% when compared to 2024. There have been 41 violent crimes YTD 2025 compared to 30 in 2024.

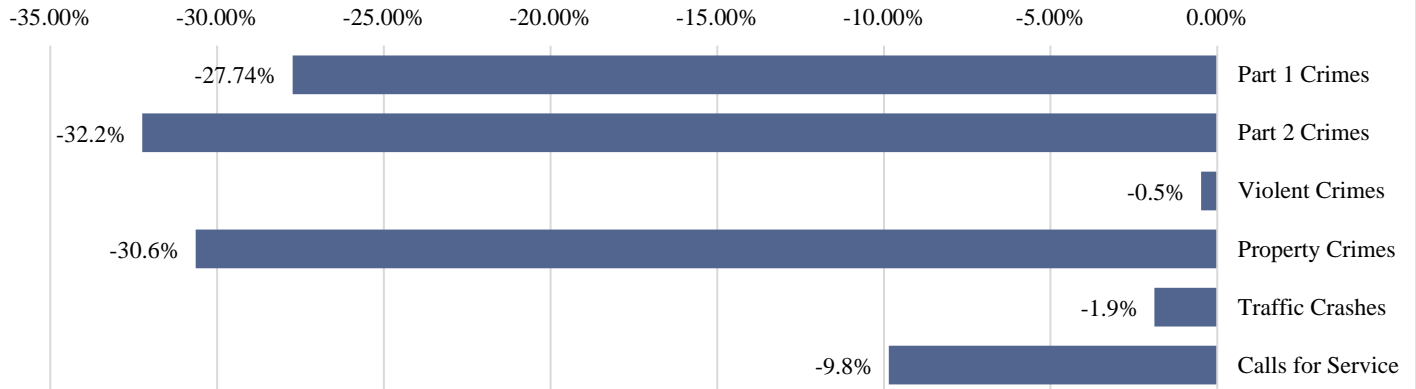
Property crimes have decreased by 24.29% when compared to 2024. All categories of property crimes have shown a decrease YTD compared to 2024.



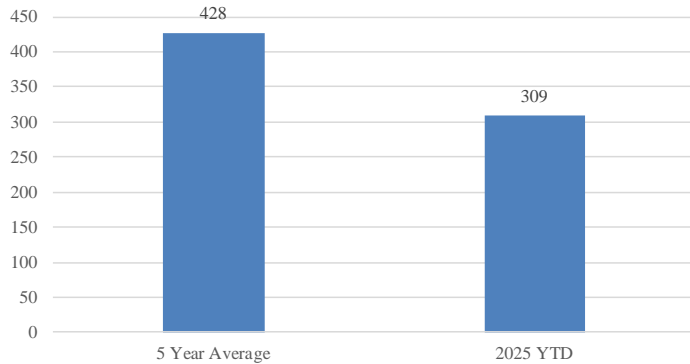
FIVE-YEAR AVERAGE

June 2025

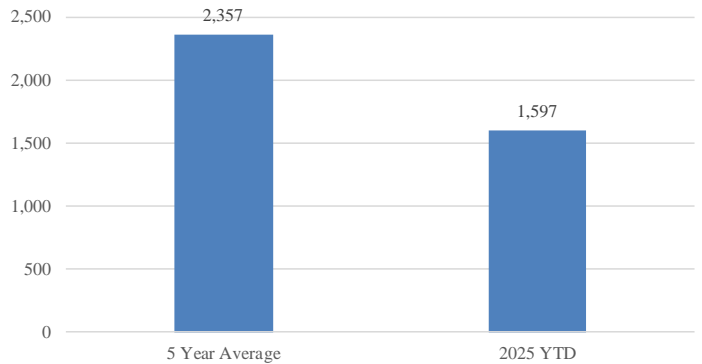
2025 YTD Compared to 5-Year Average



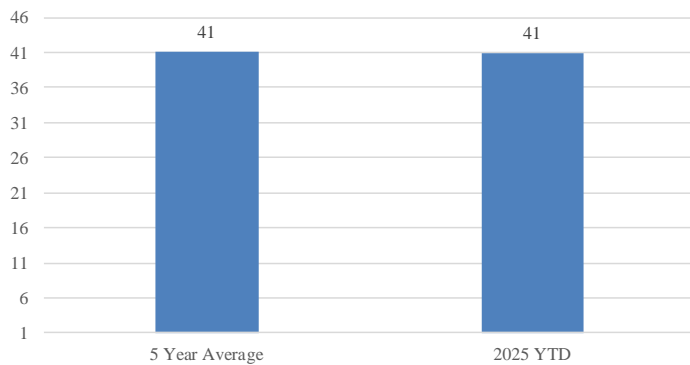
Part 1 Crimes



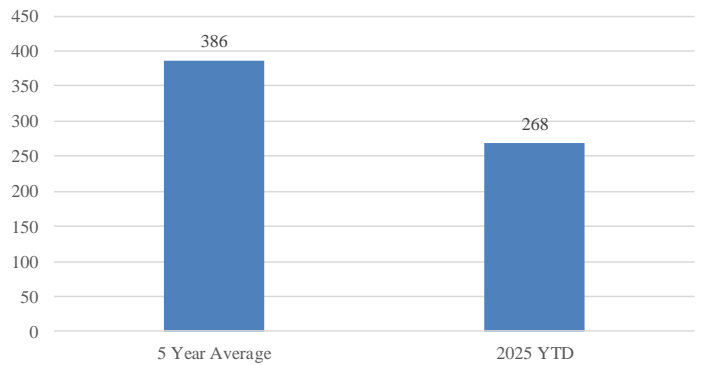
Part 2 Crimes



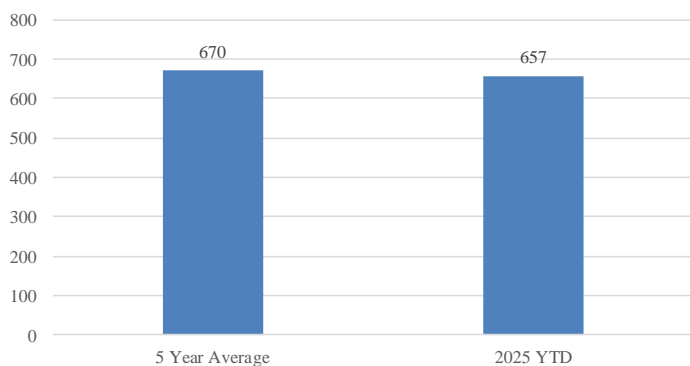
Violent Crimes



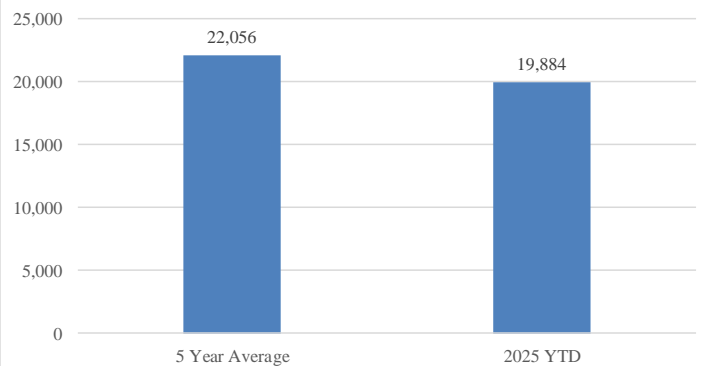
Property Crimes



Traffic Crashes



Calls For Service





CRASH STATISTICS

June 2025

Traffic crashes decreased approximately 2.7% when compared to May 2025. Year to date crashes have decreased by approximately 5.5%. Rear end collisions were the most frequent crash types. Following too closely was the most frequent contributing factor. Walnut Ave had the highest number of crashes and injuries.

Total Crashes	Current	Previous	Change	YTD 2025	YTD 2024	Change
	110	113	-2.7%	657	695	-5.5%
Injury Crashes	Total	Complaint	Minor	Serious	Fatality	Multiple
	29	18	9	2	0	8
Total Injuries	42					
DUI Crashes	Speed Crashes	Distracted Crashes		Following Too Closely Crashes		
4	8	12		24		
Day of the Week	Total				Time of Day	Total
Monday	17				0000 - 0559	3
Tuesday	13				0600 - 0859	8
Wednesday	14				0900 - 1059	14
Thursday	15				1100 - 1359	24
Friday	25				1400 - 1559	15
Saturday	17				1600 - 1859	24
Sunday	9				1900 - 2159	15
					2200 - 2359	7
Collision Type	Total				Contributing Factors	Total
Rear End	39				Following too Closely	24
Angle	38				Improper Lane Change	16
Sideswipe-Same Direction	15				Failure to Yield	15
Collision with an Object	12				Distracted	12
Sideswipe-Opposite Direction	1					
Head On	1					
Top Streets	Total Crashes		% Total	Injuries		% Injuries
Walnut Ave	22		20.0%	6		14.3%
Chattanooga Rd	12		10.9%	2		4.8%
Shugart Rd	11		10.0%	1		2.4%

	Traffic Stops	Warnings	Citations
June 2025	703	535	402
2025 YTD	6527	4651	3191
2024 YTD	5797	3014	3270