



# Dalton Police Department Public Safety Commission Meeting

January 21, 2025

## TABLE OF CONTENTS

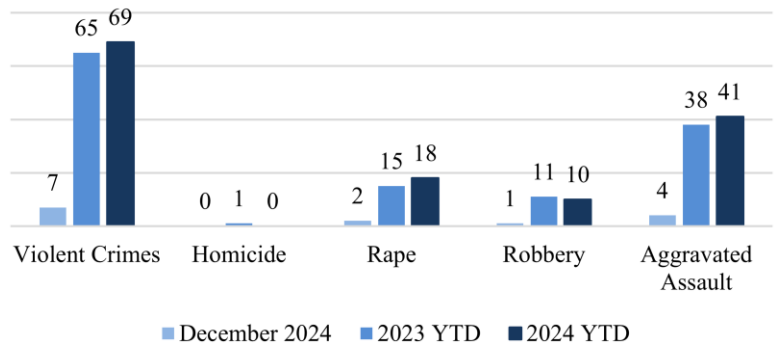
CRIME STATISTICS

CRASH STATISTICS

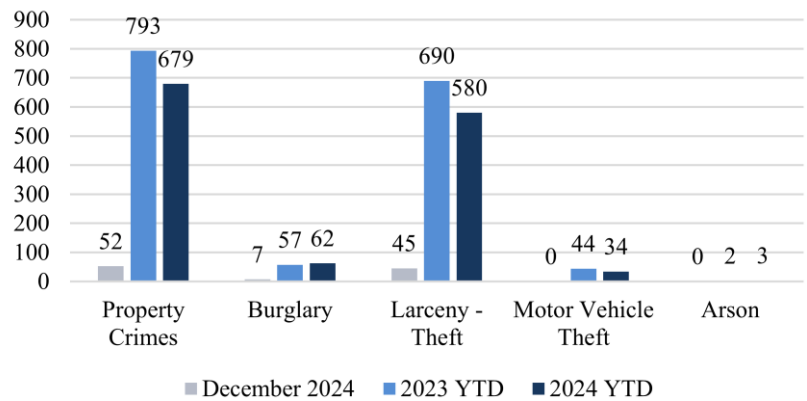
FINANCIAL STATISTICS

## DECEMBER 2024

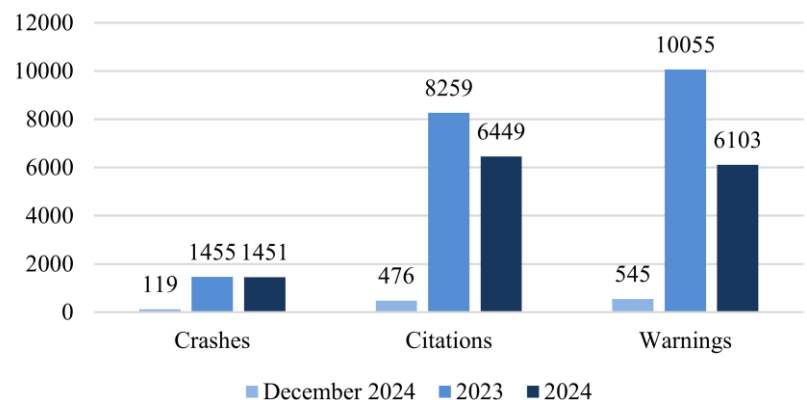
### Violent Crimes



### Property Crimes



### Traffic





# PART 1 CRIMES

## December 2024

<b>Total Part 1 Crimes</b>			<u>2023 YTD</u>	<u>2024 YTD</u>	<u>YTD Change</u>
			858	748	-12.82%
<b>Violent Crimes</b>			<u>2023 YTD</u>	<u>2024 YTD</u>	<u>YTD Change</u>
	<u>Current</u>		65	69	6.15%
	7				
<b>Homicide</b>		0	1	0	0.00%
<b>Rape</b>		2	15	18	20.00%
<b>Robbery</b>		1	11	10	-9.09%
<b>24-006768</b>	<b>12/12/2024</b>	<b>1429 W Walnut Ave</b>			
The victim reported that he arranged to meet the suspect to sell Rolex watches at the above location. When the victim arrived the suspect pointed a gun at the victim and demanded the watches. The victim pulled his own gun and the suspect ran away. The suspect left in a maroon Buick Encore. The case is under investigation.					
<b>Aggravated Assault</b>		4	38	41	7.89%
<b>Property Crimes</b>			<u>2023 YTD</u>	<u>2024 YTD</u>	<u>YTD Change</u>
		52	793	679	-14.38%
<b>Burglary</b>		7	57	62	8.77%
<b>Larceny-Theft</b>		45	690	580	-15.94%
<b>Motor Vehicle Theft</b>		0	44	34	-22.73%
<b>Arson</b>		0	2	3	50.00%

There were 59 Part 1 crimes in December 2024. That is a decrease of approximately 1.67% compared to 60 in December 2023. Total Part 1 crimes YTD have decreased by approximately 12.82% when compared to 2023.

Violent crimes have increased by approximately 6.15% when compared to 2023. There have been 69 violent crimes YTD 2024 compared to 65 in 2023.

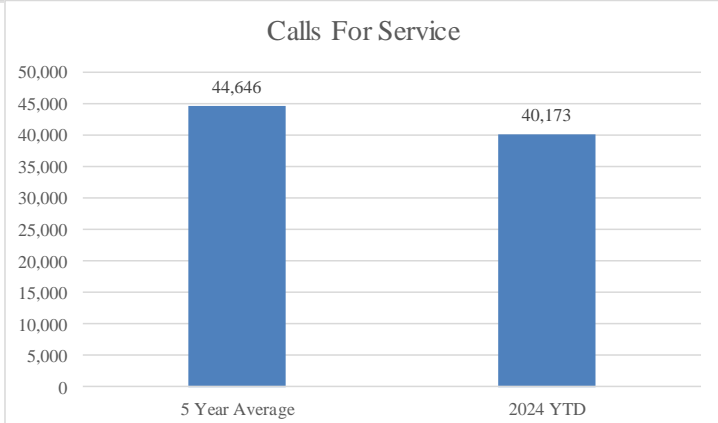
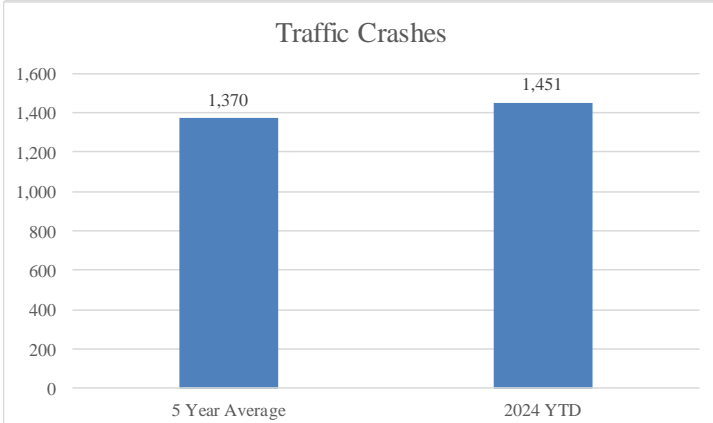
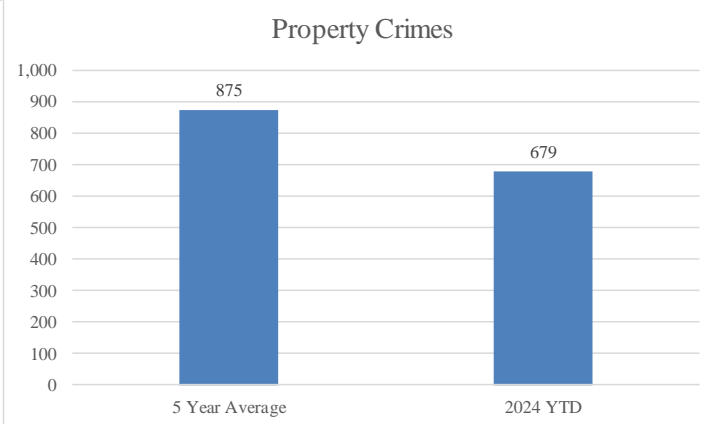
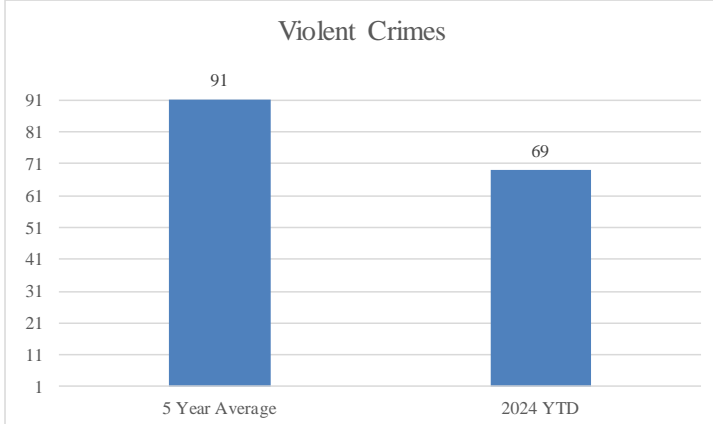
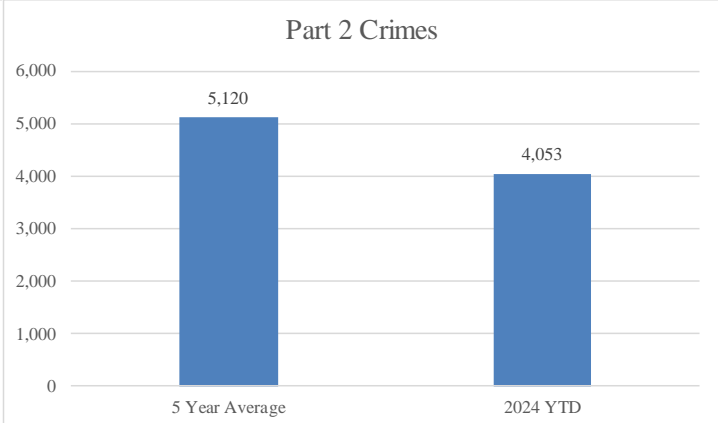
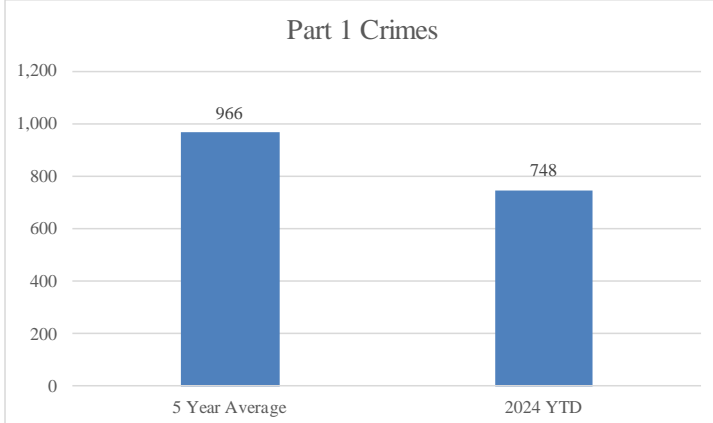
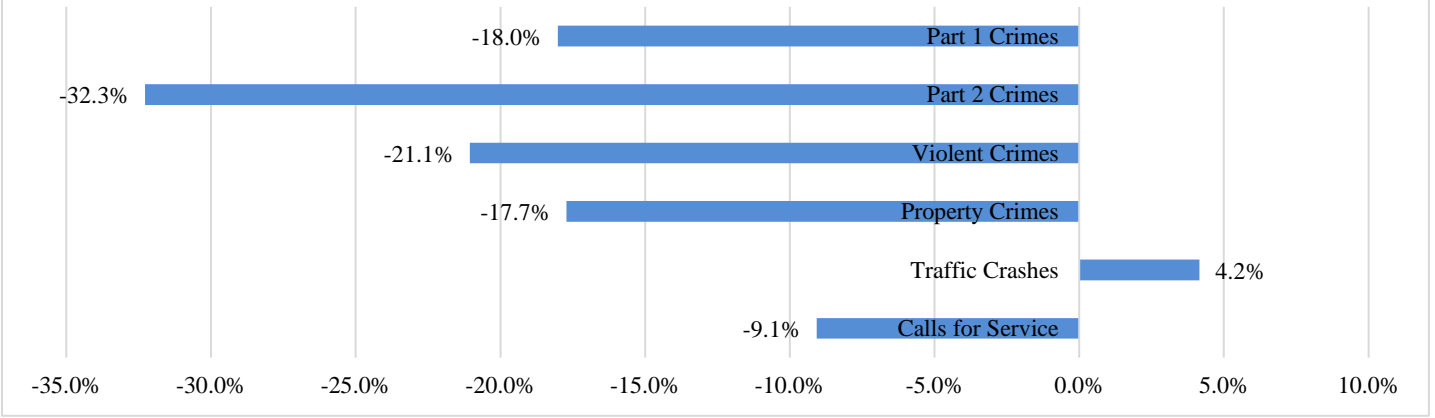
Property crimes have decreased by 14.4% when compared to 2023. Burglaries have increased compared to the previous year.



# FIVE-YEAR AVERAGE

## December 2024

### 2024 YTD Compared to 5-Year Average





# CRASH STATISTICS

## December 2024

Traffic crashes decreased by approximately 4.8% when compared to November 2024. Year to date crashes have decreased by approximately .3%. Angle and rear end collisions were the most frequent crash types. Following too closely was the most frequent contributing factor. Walnut Ave had the highest number of crashes and injuries.

Total Crashes	Current	Previous	Change	YTD 2024	YTD 2023	Change
	119	125	-4.8%	1451	1455	-0.3%

Injury Crashes	Total	Complaint	Minor	Serious	Fatality	Multiple
	22	17	5	0	0	5
<b>Total Injuries</b>	27					

DUI Crashes	Speed Crashes	Distracted Crashes	Following Too Closely Crashes
4	8	6	29

Day of the Week	Total	Time of Day	Total
Monday	25	0000 - 0559	2
Tuesday	17	0600 - 0859	8
Wednesday	15	0900 - 1059	9
Thursday	21	1100 - 1359	27
Friday	21	1400 - 1559	25
Saturday	12	1600 - 1859	34
Sunday	8	1900 - 2159	10
		2200 - 2359	4

Collision Type	Total	Contributing Factors	Total
Angle	48	Following too Closely	29
Rear End	40	Failure to Yield	18
Collision with an Object	14	Improper Lane Change	11
Sideswipe-Same Direction	12	Stop Sign/Signal Violation	11
Head On	4		
Sideswipe-Opposite Direction	1		

Top Streets	Total Crashes	% Total	Injuries	% Injuries
Walnut Ave	16	13.4%	16	59.3%
Chattanooga Rd	11	9.2%	11	40.7%
Thornton Ave	8	6.7%	0	0.0%

	Traffic Stops	Warnings	Citations
December 2024	863	545	476
2024 YTD	11048	6103	6449
2023 YTD	18625	10055	8259