

# East Morris Properties Rezoning Request

## C-2, General Commercial


### to

## C-3, Central Business District

### City of Dalton Jurisdiction



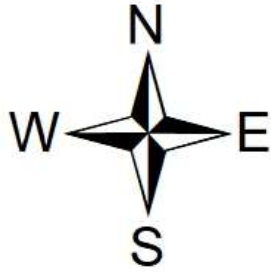
#### Unified Zoning

-  Medium Density Single Family Residential (R-3)
-  Rural Residential (R-5)
-  Rural Residential (R-5) Cond
-  Transitional Residential (R-6)
-  General Commercial (C-2)
-  Central Business District (C-3)
-  Transitional Commercial (C-4)
-  Mixed Use (MU)
-  Heavy Manufacturing (M-2)

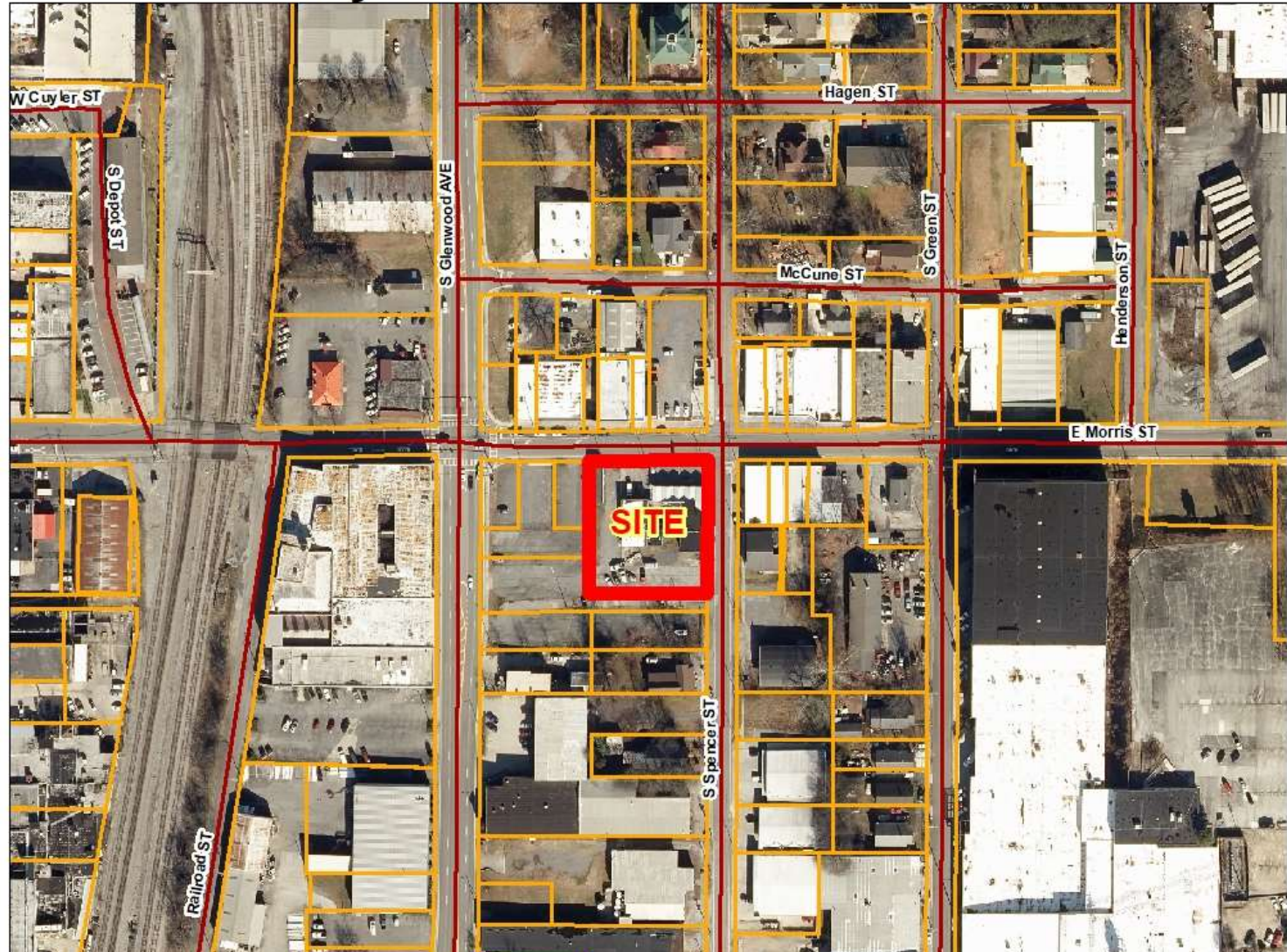
**FEET**  
**200**



# East Morris Properties Rezoning Request C-2, General Commercial to C-3, Central Business District City of Dalton Jurisdiction



**FEET**  
**200**

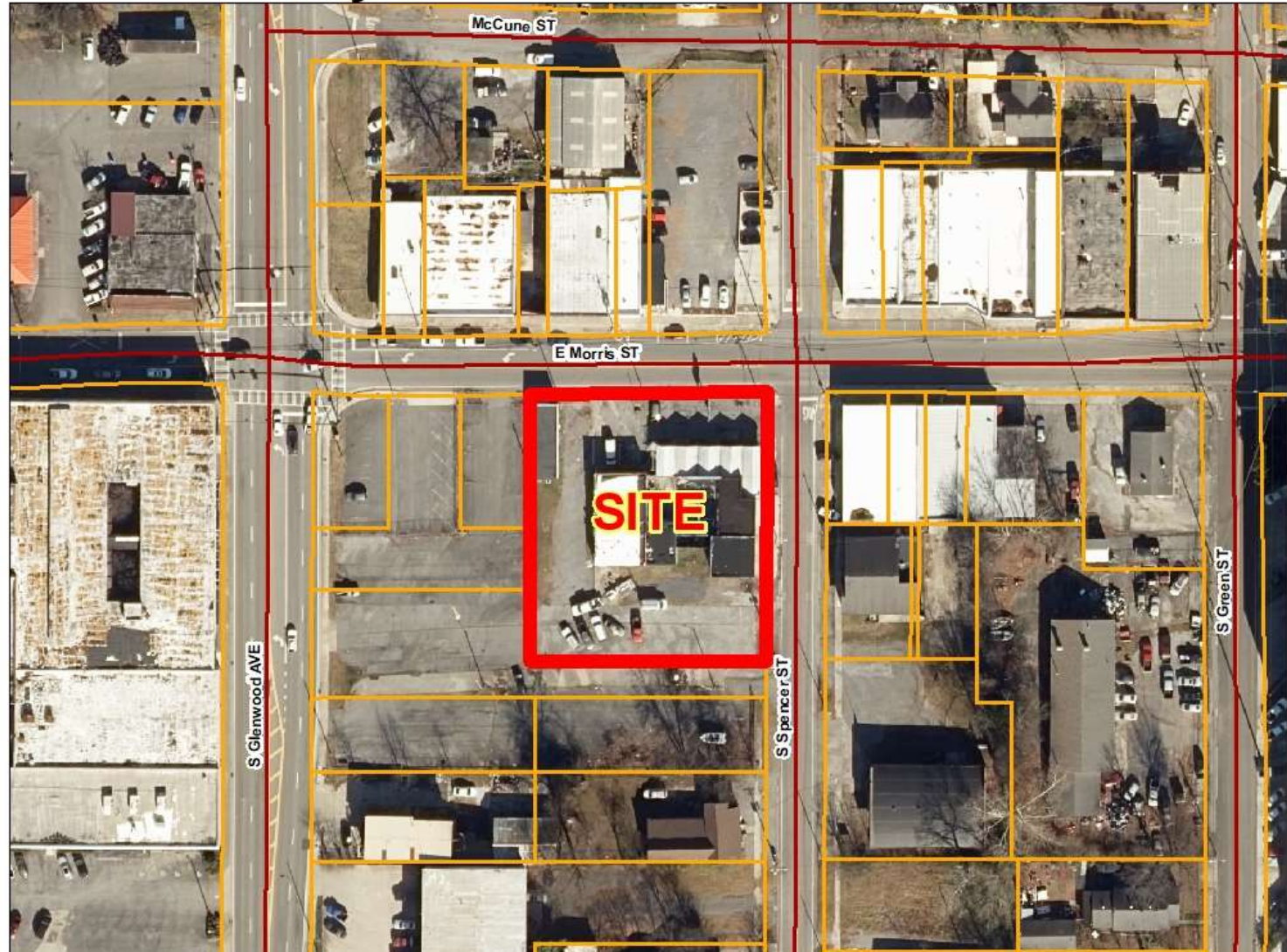




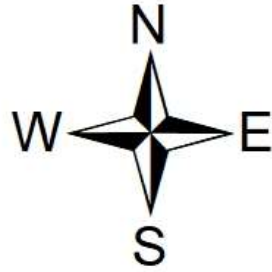
**East Morris Properties Rezoning Request  
C-2, General Commercial  
to  
C-3, Central Business District  
City of Dalton Jurisdiction**



**FEET  
100**



# East Morris Properties Rezoning Request C-2, General Commercial to C-3, Central Business District City of Dalton Jurisdiction



## FUTURE DEVELOPMENT MAP

-  Commercial Corridor
-  Downtown/Town Center
-  Industrial
-  Town Neighborhood Revitalization

**FEET  
200**

