



	Medium Density Single Family Residential (R-3)
	Rural Residential (R-5)
	High Density Residential (R-7)
	Limited Commercial (C-1A)
	General Commercial (C-2)
	Heavy Manufacturing (M-2)

The map displays the Mack Gaston Center area, featuring several streets and landmarks. Key streets include M L King Jr Blvd, McAfee St, Straight St, N Bogle St, and S Bogle St. The Mack Gaston Center is a large green area, and Blue Ridge Elementary is a red area. A specific 'SITE' is marked with a black dot on Straight St. The map also shows various other streets such as Griffin St, Meeting St, N Easterling St, N Fredrick St, S Fredrick St, Macon St, Abigail St, Straight St, and Abigail St. The map is color-coded with green for parks/open spaces, blue for water bodies, and red for other areas.



Sammons Rezoning Request

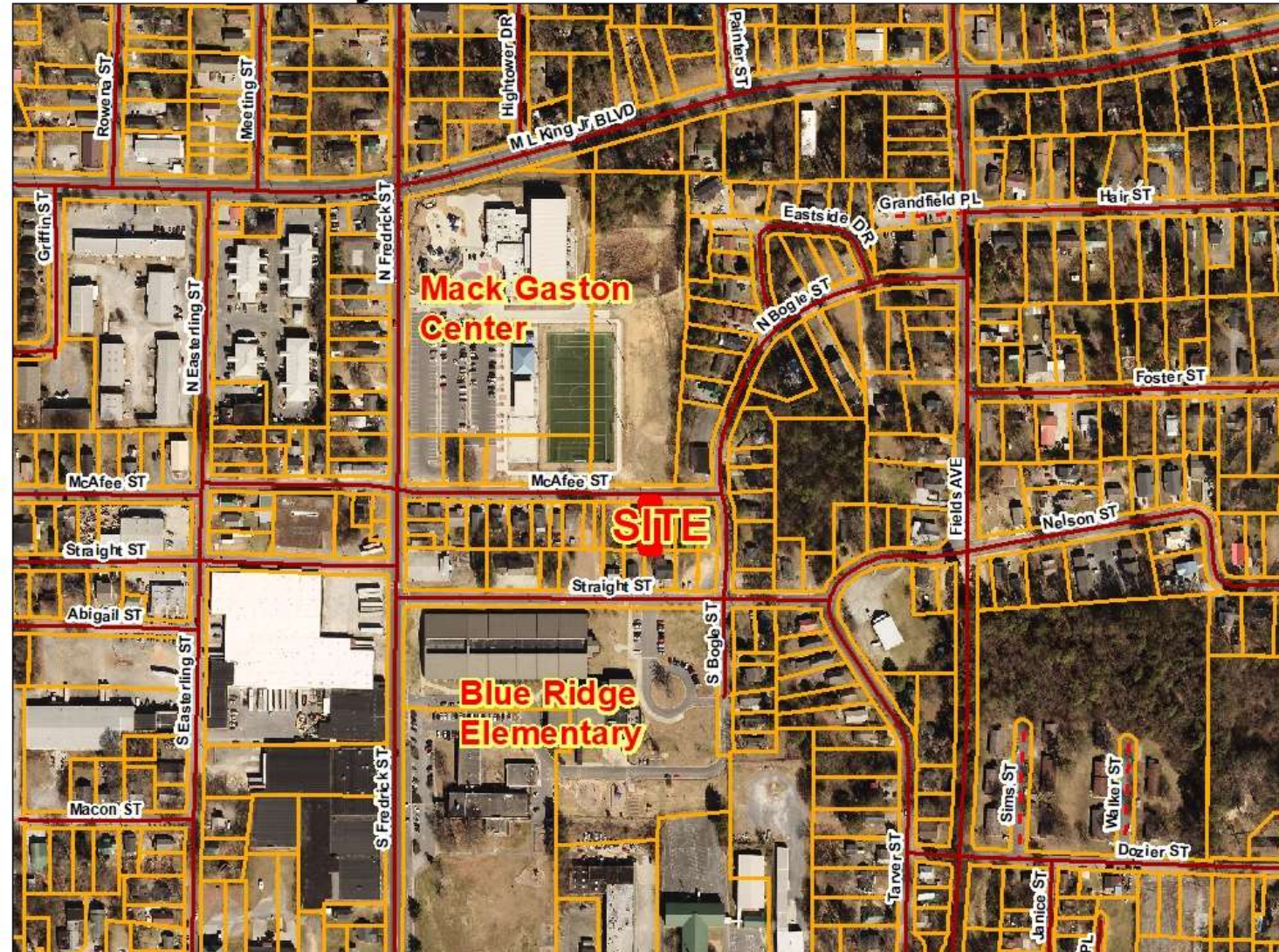
R-3, Medium Density Single Family Residential

to

C-1, Neighborhood Commercial

City of Dalton Jurisdiction

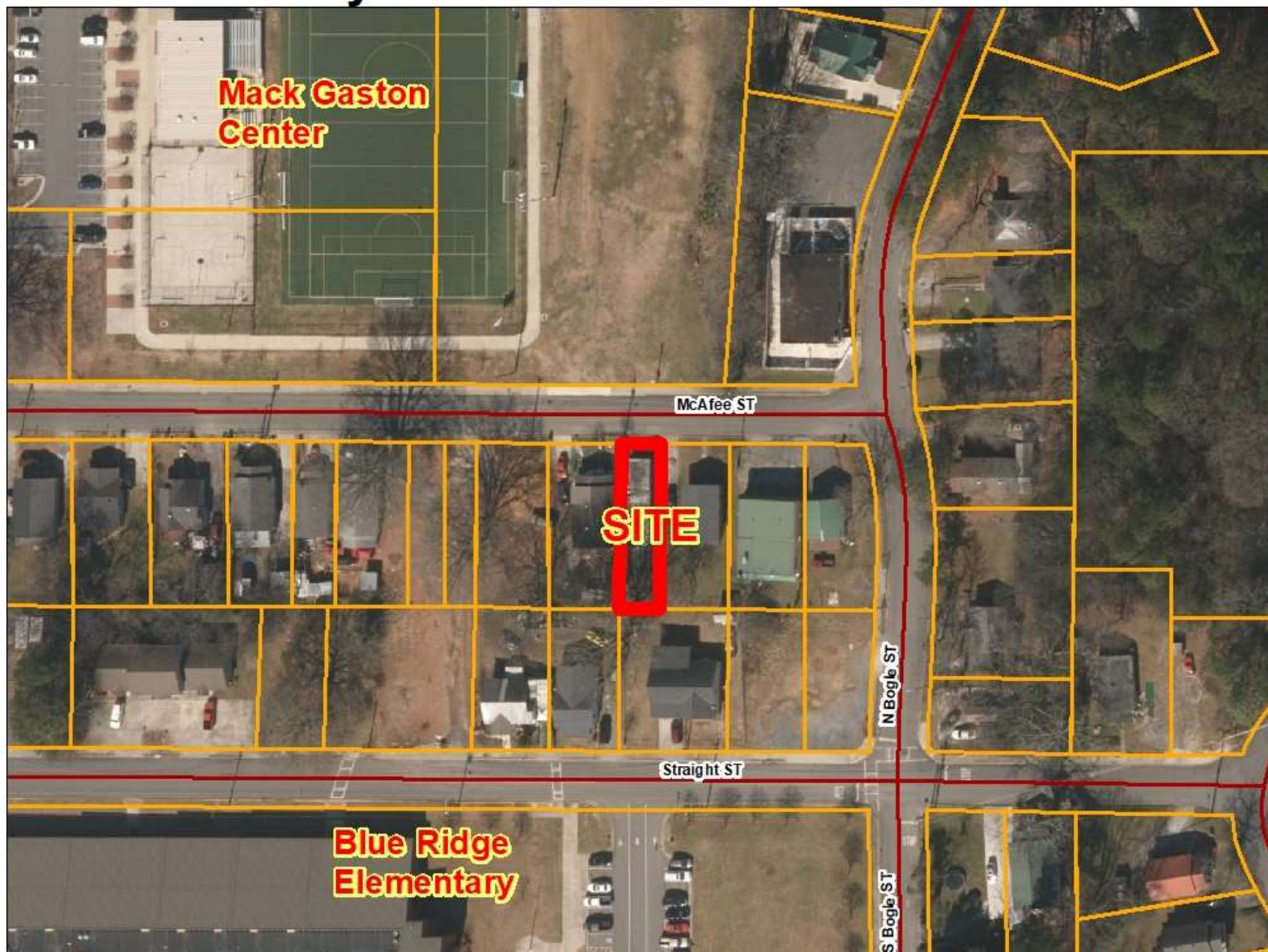
FEET
300



Sammons Rezoning Request
R-3, Medium Density Single Family Residential
to
C-1, Neighborhood Commercial
City of Dalton Jurisdiction



FEET
100



Sammons Rezoning Request

R-3, Medium Density Single Family Residential

to

C-1, Neighborhood Commercial

City of Dalton Jurisdiction



FUTURE DEVELOPMENT MAP



FEET
300

