

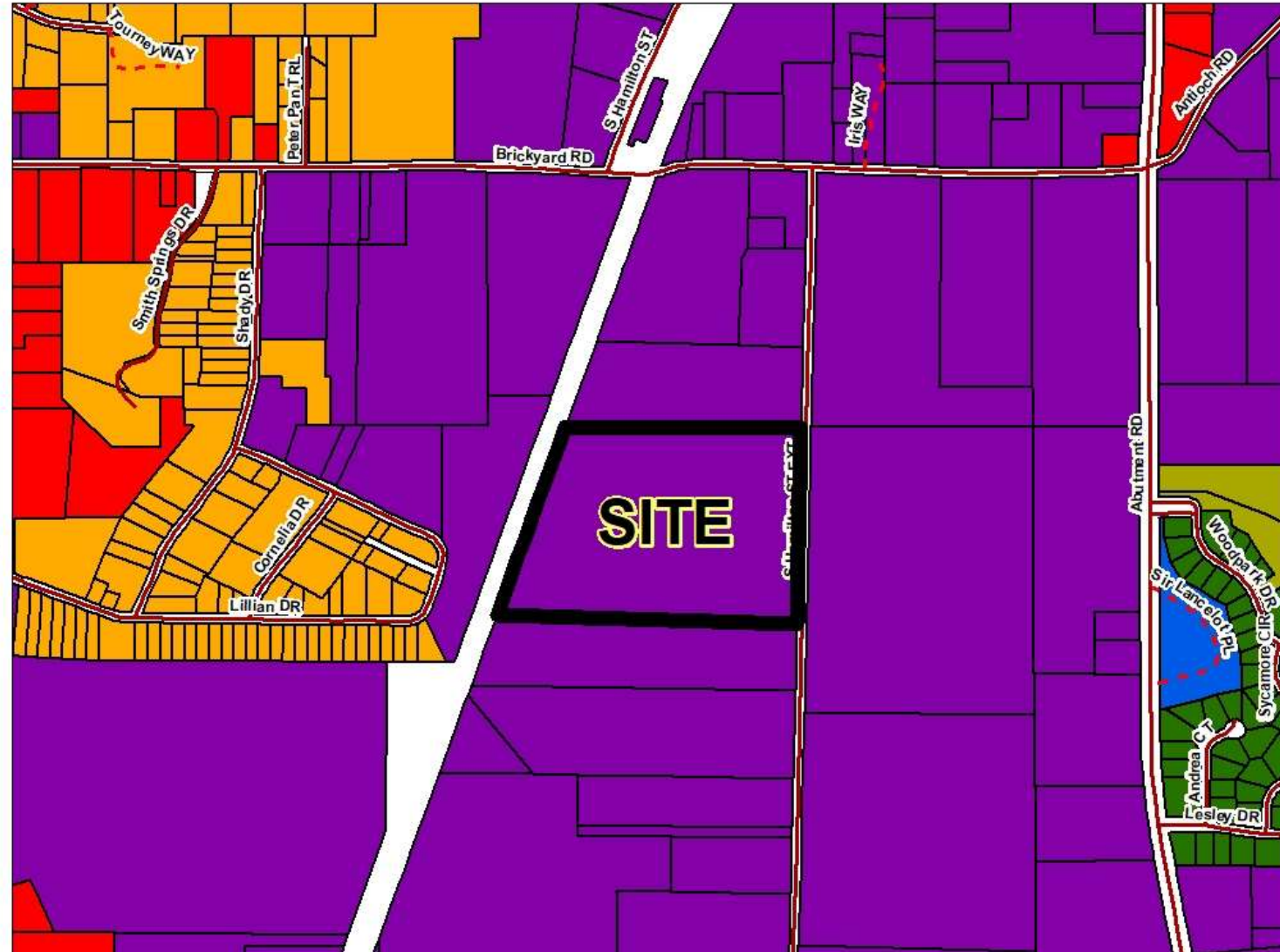


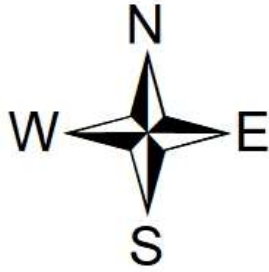
TCW Dalton LLC De-Annexation Request Into Unincorporated Whitfield County Zoning to remain M-2, Heavy Manufacturing

ZONING DISTRICT

- General Agriculture (GA)
- General Agriculture (GA) Cond
- Medium Density Single Family Residential (R-3)
- Rural Residential (R-5)
- High Density Residential (R-7)
- General Commercial (C-2)
- Heavy Manufacturing (M-2)

FEET
500





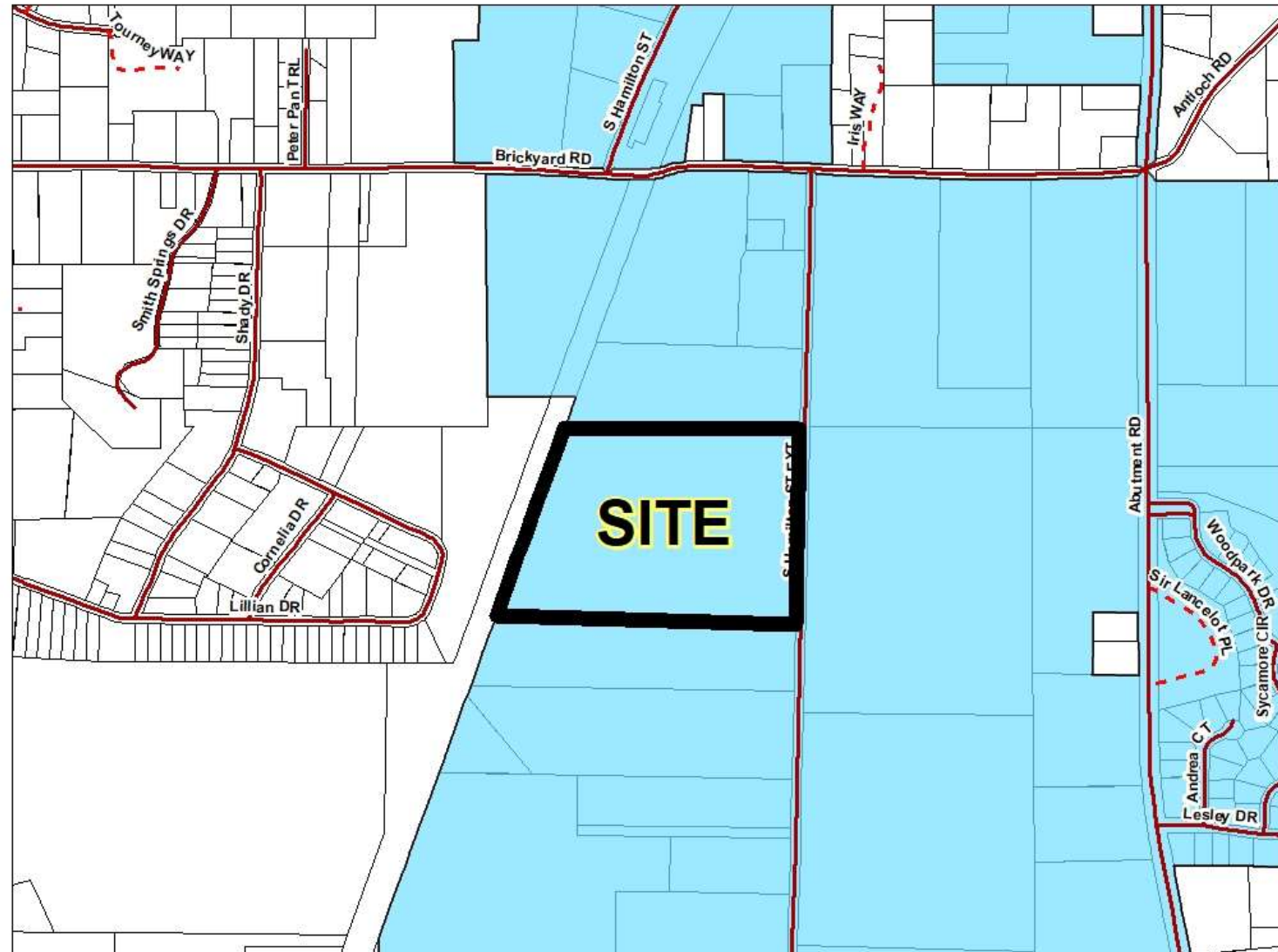
TCW Dalton LLC De-Annexation Request Into Unincorporated Whitfield County Zoning to remain M-2, Heavy Manufacturing

DALTON CITY LIMITS



Town_Boundaries

FEET
500





TCW Dalton LLC De-Annexation Request Into Unincorporated Whitfield County Zoning to remain M-2, Heavy Manufacturing

FEET
500

