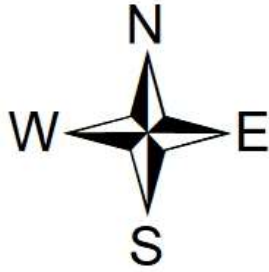


# HMC Holdings Inc & Dalton-Whitfield JDA Annexation Request

## City of Dalton

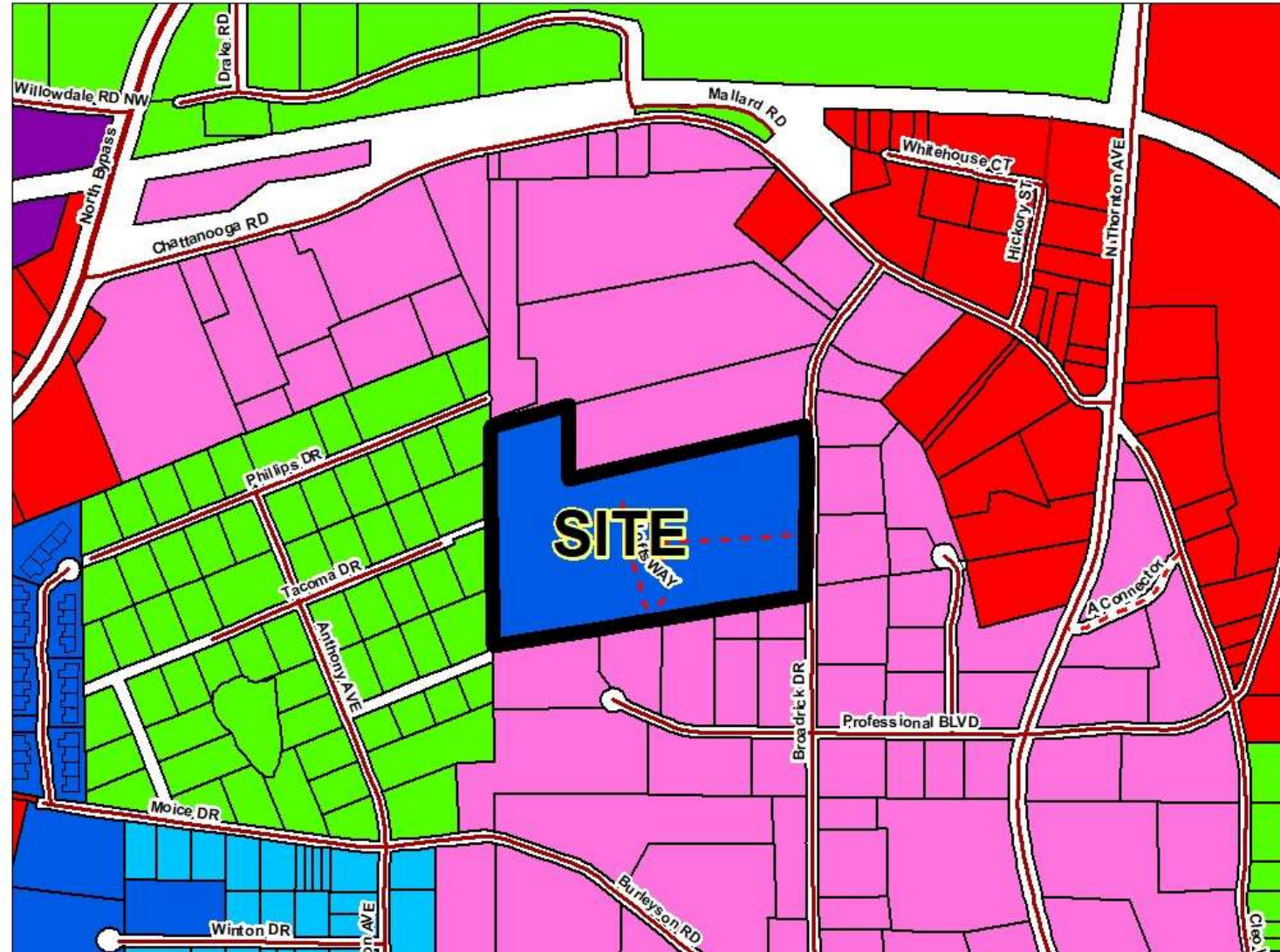
### Zoning to remain R-7, High Density Residential



#### ZONING DISTRICT

-  Low Density Single Family Residential (R-2)
-  Medium Density Single Family Residential (R-3)
-  Transitional Residential (R-6)
-  High Density Residential (R-7)
-  Neighborhood Commercial (C-1)
-  General Commercial (C-2)
-  Heavy Manufacturing (M-2)

**FEET**  
**500**




# HMC Holdings Inc & Dalton-Whitfield JDA Annexation Request

## City of Dalton

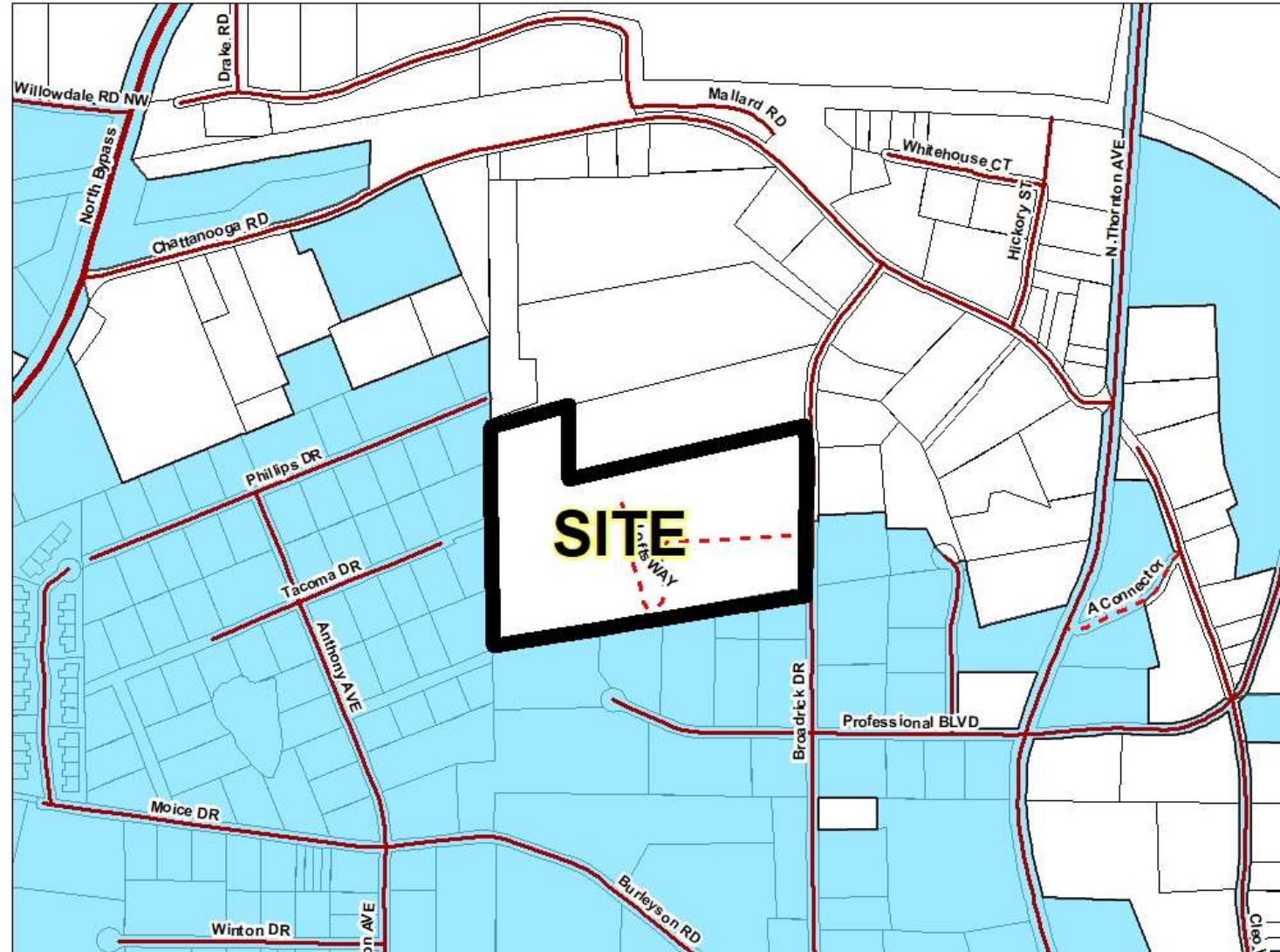
### Zoning to remain R-7, High Density Residential



**DALTON CITY LIMITS**

 Town\_Boundaries

**FEET**  
**500**



# HMC Holdings Inc & Dalton-Whitfield JDA Annexation Request City of Dalton Zoning to remain R-7, High Density Residential



**FEET**  
**500**

