

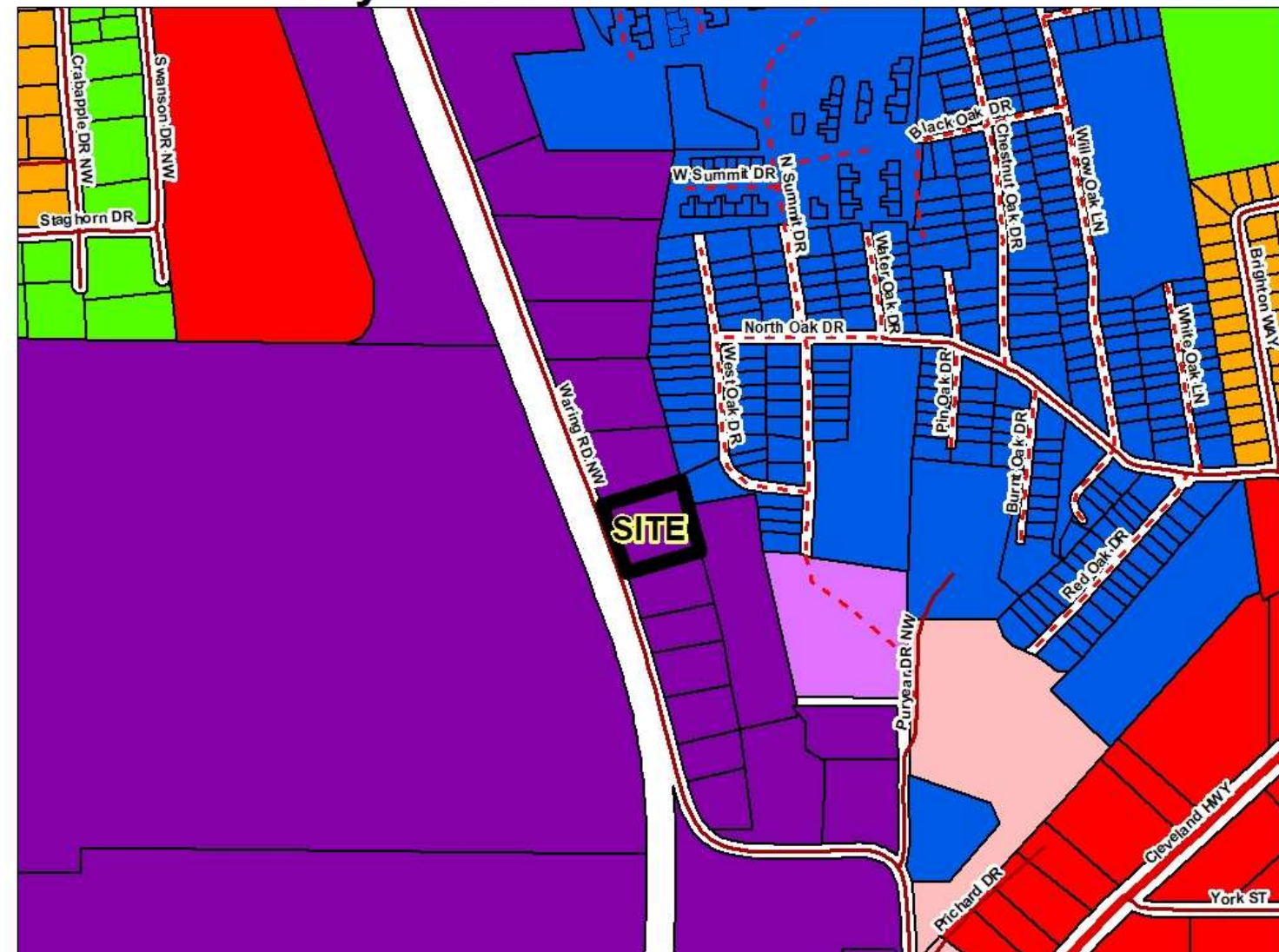
Figueroa Rezoning Request M-2, Heavy Manufacturing to R-7, High Density Residential City of Dalton Jurisdiction



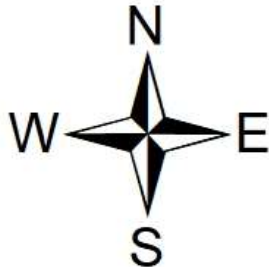
ZONING DISTRICT

- Low Density Single Family Residential (R-2)
- Rural Residential (R-5)
- High Density Residential (R-7)
- Neighborhood Commercial (C-1)
- General Commercial (C-2)
- Light Manufacturing (M-1)
- Heavy Manufacturing (M-2)


FEET
300



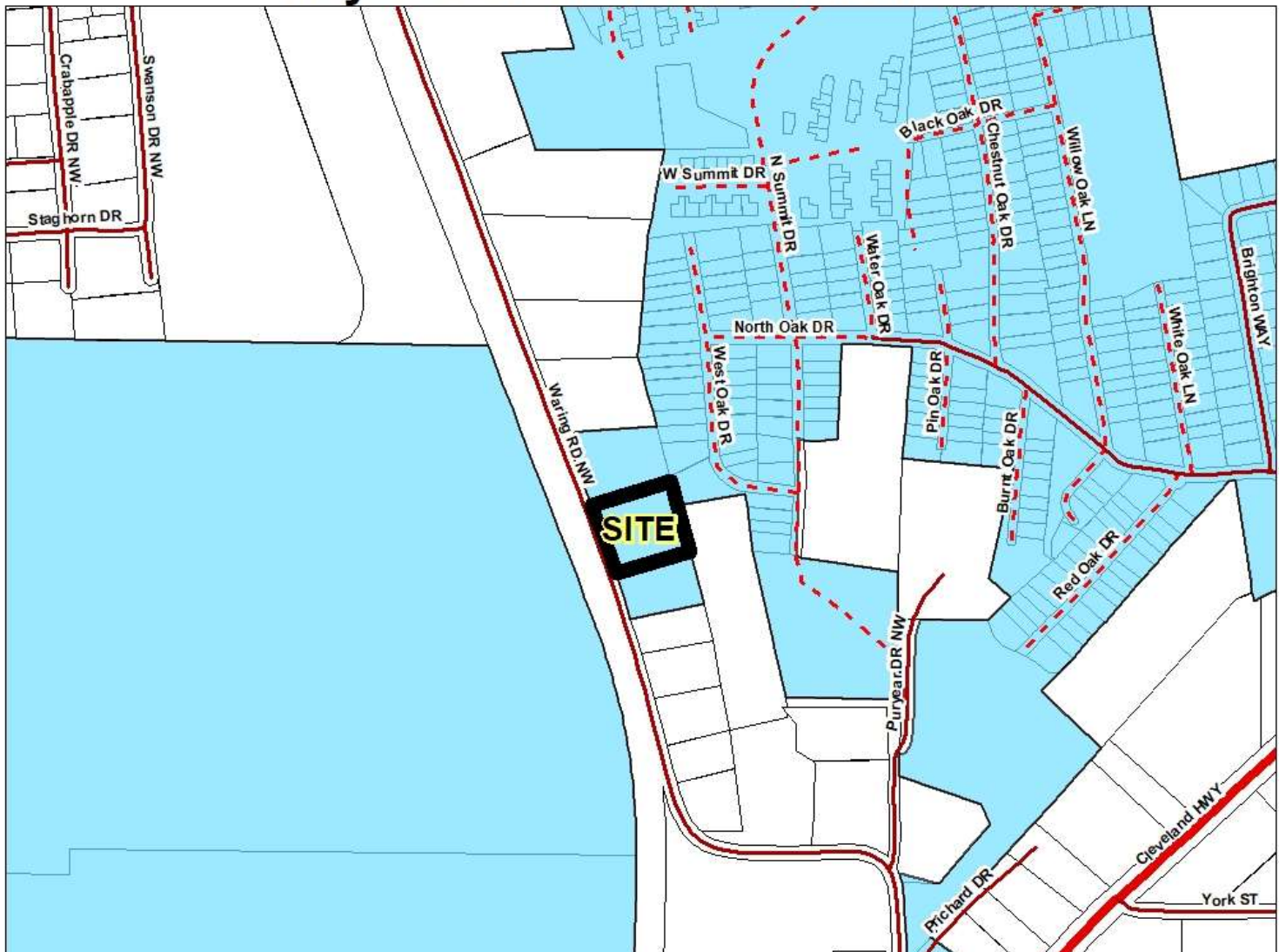
Figueroa Rezoning Request M-2, Heavy Manufacturing to R-7, High Density Residential City of Dalton Jurisdiction



DALTON CITY LIMITS

 Town_Boundaries

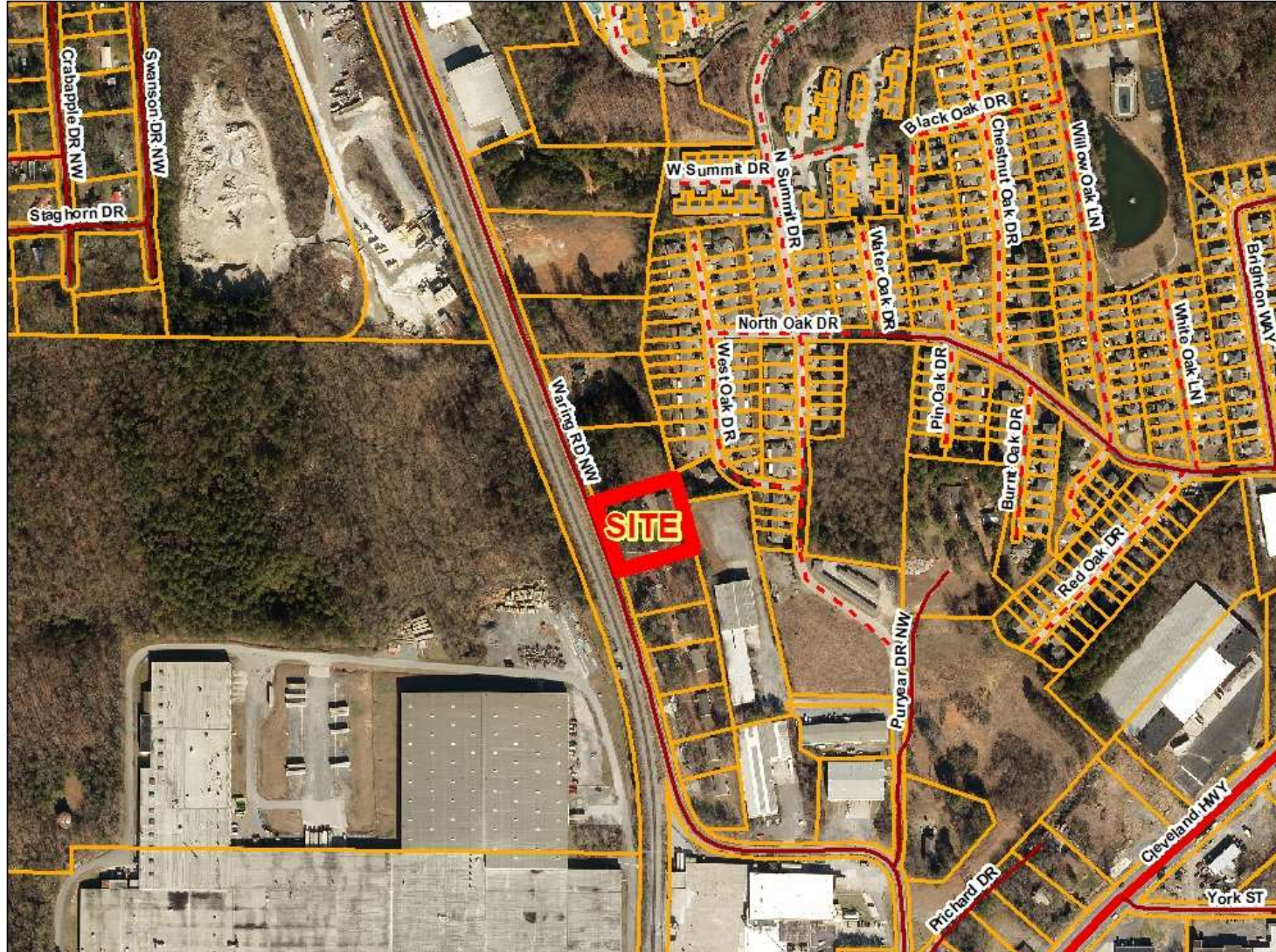
**FEET
300**



Figueroa Rezoning Request M-2, Heavy Manufacturing to R-7, High Density Residential City of Dalton Jurisdiction



FEET
300



Figueroa Rezoning Request M-2, Heavy Manufacturing to R-7, High Density Residential City of Dalton Jurisdiction



FEET
200



Figueroa Rezoning Request M-2, Heavy Manufacturing to R-7, High Density Residential City of Dalton Jurisdiction



FUTURE DEVELOPMENT MAP

-  Commercial Corridor
-  Industrial
-  Suburban Neighborhood

**FEET
300**

