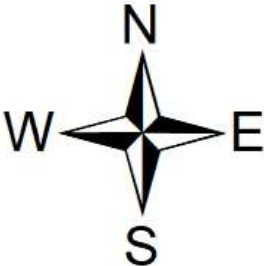




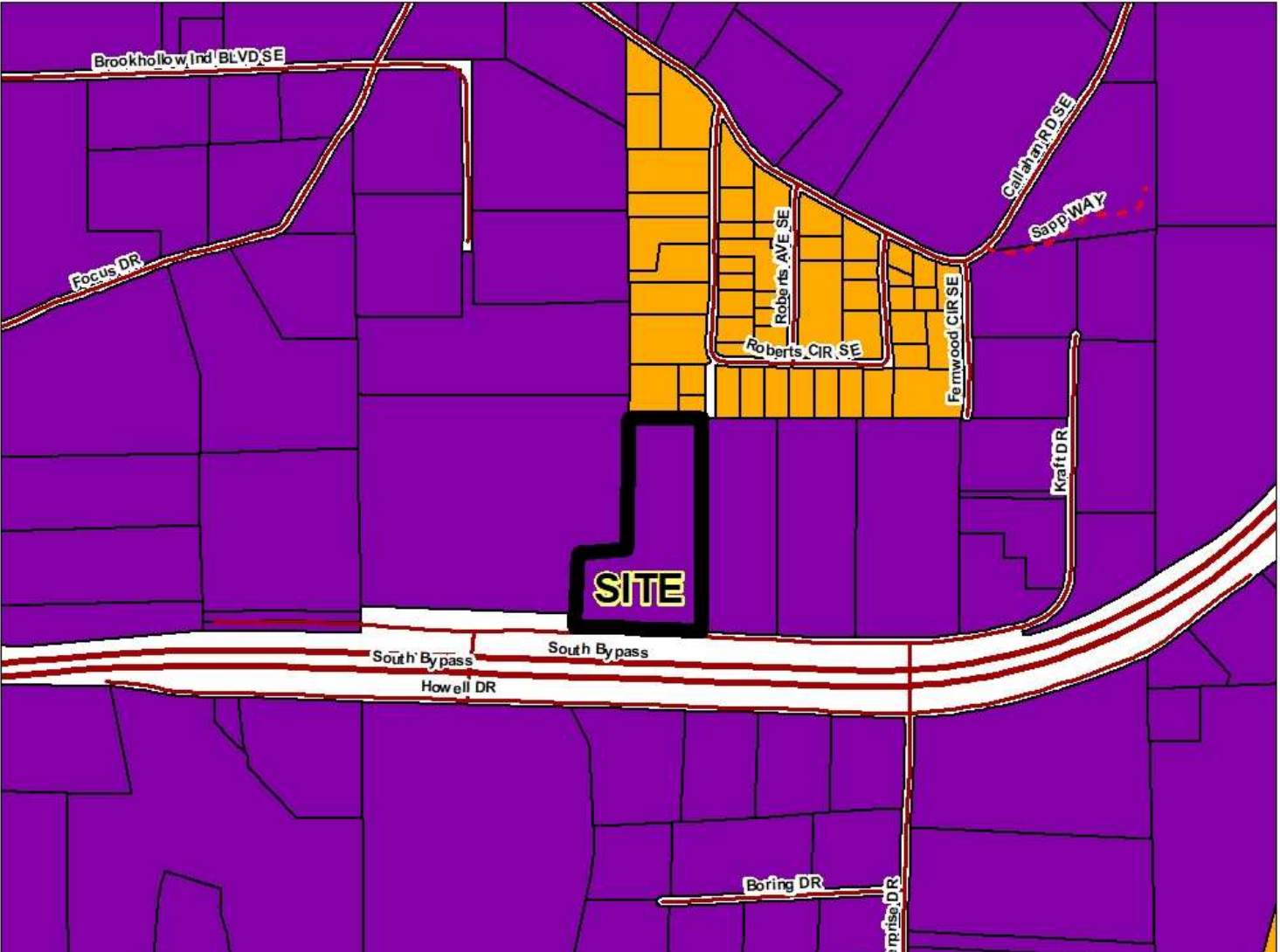
Kobayshi Healthcare International De-Annexation Request Unincorporated Whitfield County Zoning to remain M-2, Heavy Manufacturing



ZONING DISTRICT

-  Rural Residential (R-5)
-  Heavy Manufacturing (M-2)

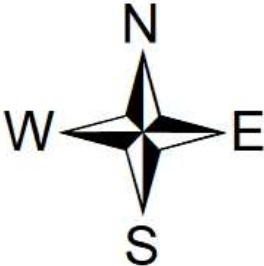
FEET
500



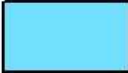
Kobayshi Healthcare International De-Annexation Request

Unincorporated Whitfield County

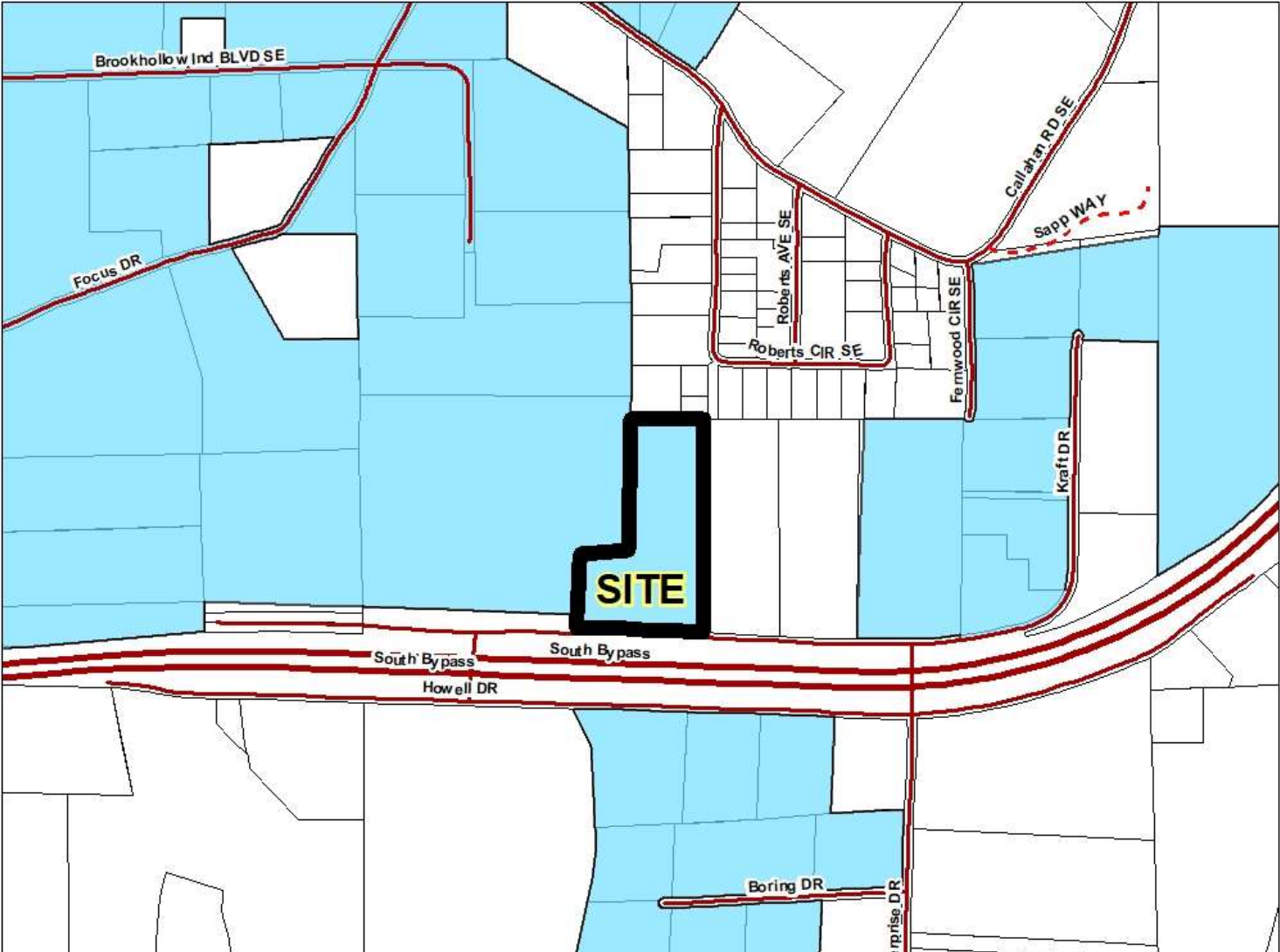
Zoning to remain M-2, Heavy Manufacturing



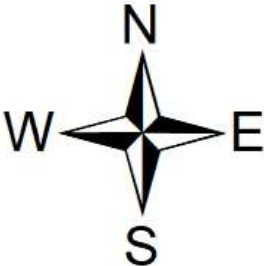
DALTON CITY LIMITS

 Town_Boundaries

FEET
500



Kobayshi Healthcare International De-Annexation Request Unincorporated Whitfield County Zoning to remain M-2, Heavy Manufacturing



FEET
500

