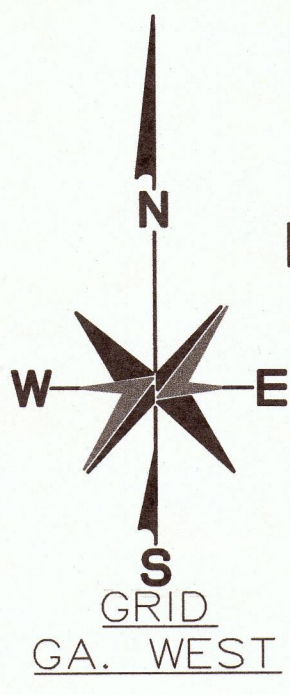


Survey For Paulding County Land Development, LLC

Located in Land Lots 494, 495, 514, 515, 566, and 567,
2nd District, 3rd Section,
Paulding County, Georgia

Plat Date: November 16, 2022

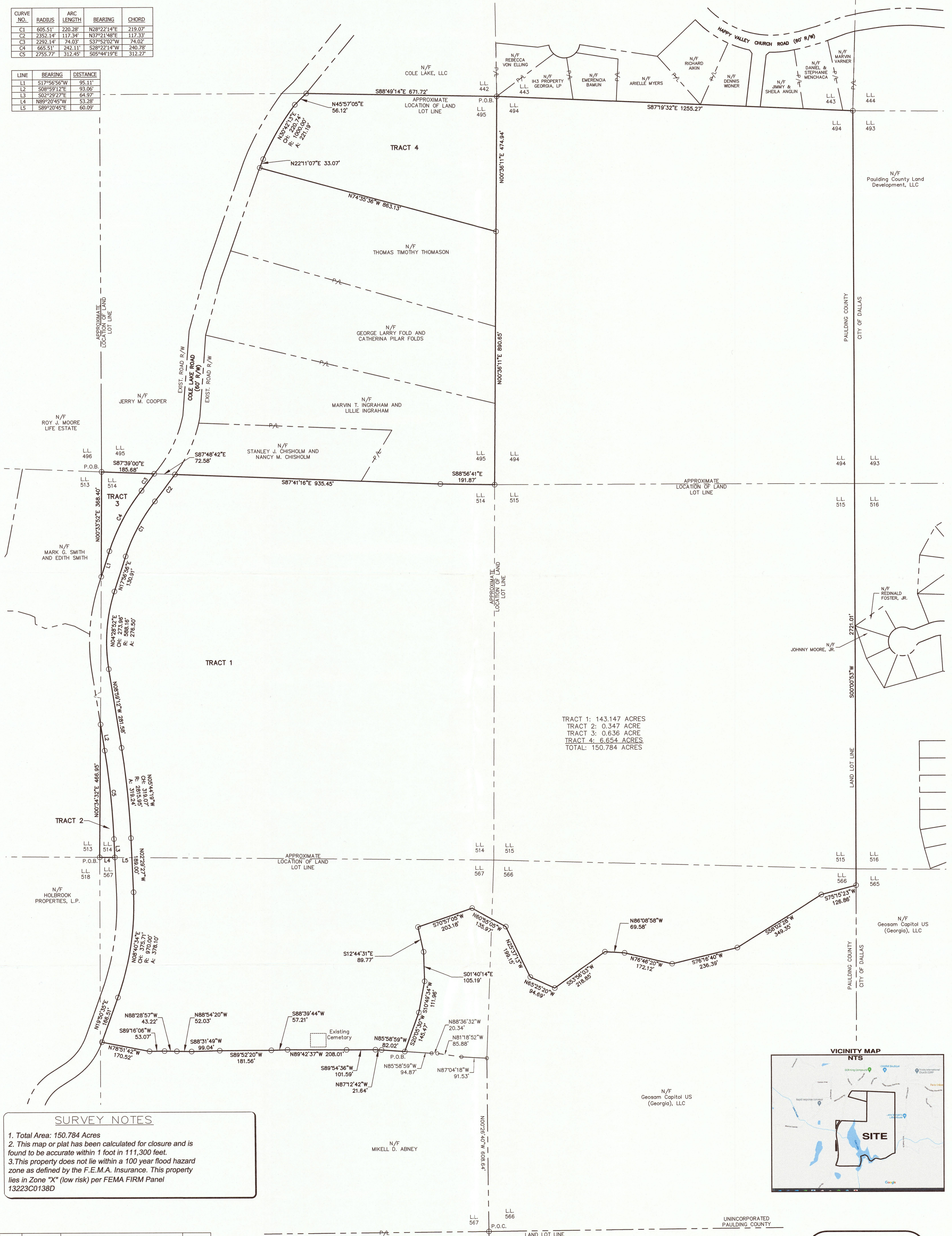
Scale: 1" = 150'



RECORDING INFORMATION

CURVE NO.	RADIUS	ARC LENGTH	BEARING	CHORD
C1	605.51'	220.28'	N28°22'14"E	219.07'
C2	2352.14'	117.34'	N37°21'48"E	117.33'
C3	2292.14'	74.03'	S37°52'02"W	74.02'
C4	665.51'	242.11'	S28°22'14"W	240.78'
C5	2755.77'	312.45'	S05°44'19"E	312.27'

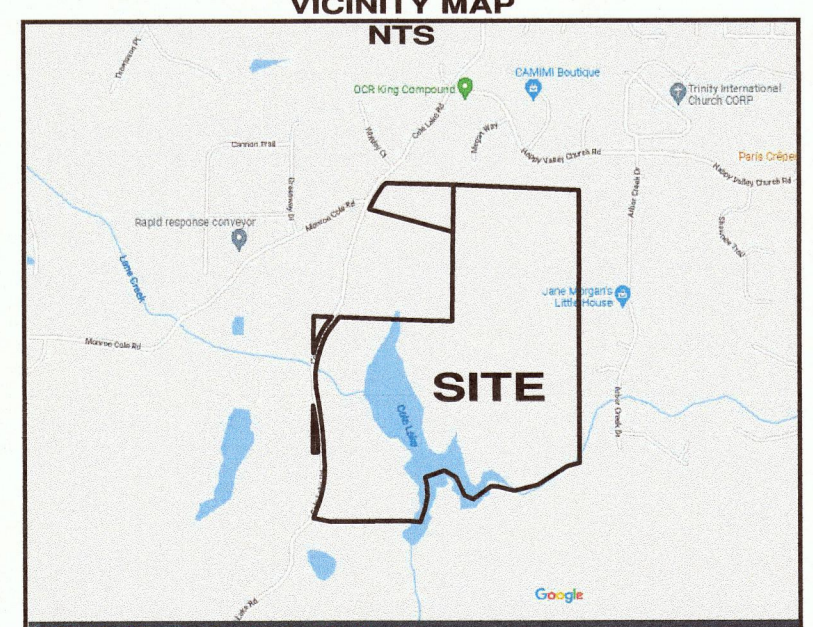
LINE	BEARING	DISTANCE
L1	S17°56'56"W	95.11'
L2	S08°59'12"E	93.06'
L3	S02°29'27"E	64.97'
L4	N89°20'45"W	53.28'
L5	S89°20'45"E	60.09'



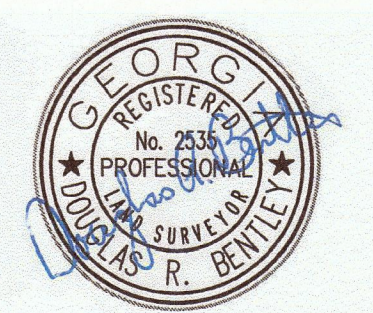
TRACT 1: 143.147 ACRES
TRACT 2: 0.347 ACRE
TRACT 3: 0.636 ACRE
TRACT 4: 6.654 ACRES
TOTAL: 150.784 ACRES

SURVEY NOTES

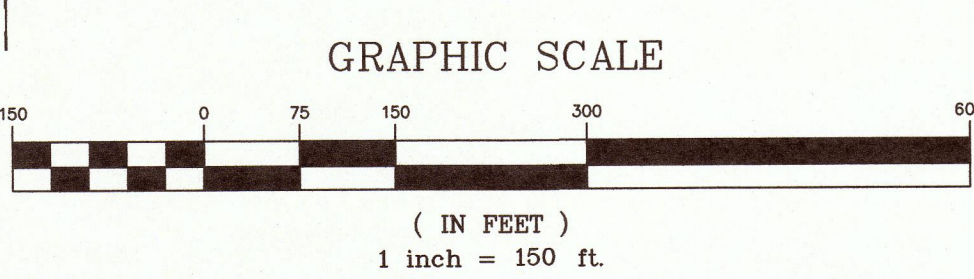
- Total Area: 150.784 Acres
- This map or plat has been calculated for closure and is found to be accurate within 1 foot in 111,300 feet.
- This property does not lie within a 100 year flood hazard zone as defined by the F.E.M.A. Insurance. This property lies in Zone "X" (low risk) per FEMA FIRM Panel 13223C0138D



NO.	DATE	DESCRIPTION	BY



N/F S.J. TWILLEY
TAX ID: 170.2.3.001.0000



PREPARED BY:

ELITE
ENGINEERING | SURVEYING | CONSTRUCTION MANAGEMENT
3660 Cedarcrest Road, Suite 220
Acworth, Georgia 30101
(678) 324-8291

21147surv3.5.dwg