

THIS BLOCK RESERVED FOR THE CLERK OF THE SUPERIOR COURT.

LINE TABLE

Table with 3 columns: LINE, BEARING, DISTANCE. Lists lines L1 through L21 with their respective bearings and distances.

CURVE TABLE

Table with 5 columns: CURVE, BEARING, ARC, RADIUS, CHORD. Lists curves C1 through C5 with their respective bearings, arc lengths, radii, and chord lengths.

SEE SHEET 3 OF 3 FOR CALLS AND DEFINITION OF PROPOSED EASEMENTS

AREA TABLE

PROPOSED TRACT 1A 190,647 SQ.FT. OR 4.3766 AC.
PROPOSED TRACT 1B 268,995 SQ.FT. OR 6.1753 AC.
TOTAL AREA 459,642 SQ.FT. OR 10.5519 AC.

LEGEND

- Legend items including CURB AND GUTTER (C&G), FENCE, HANDRAIL, STORM DRAIN LINE, SANITARY SEWER, WATER LINE, GAS LINE, UNDERGROUND POWER LINE, OVERHEAD POWER LINE, COMMUNICATION, TOPOGRAPHIC CONTOUR, PROPERTY LINE, CATCH BASIN (DWCB), CATCH BASIN (SWCB), DROP INLET (DI), JUNCTION BOX (JB), HEAD WALL (HW), CURB INLET (CI), FLARED END SECTION (FES), OUTLET CONTROL STRUCTURE, YARD DRAIN INLET, SS MANHOLE (MH), CLEAN OUT (CO), GREASE TRAP (GT), IRRIGATION CONTROL VALVE, FIRE HYDRANT (FH), WATER VALVE (WV), WATER METER (WM), FIRE DEPT. CONNECTION (FDC), WATER VALVE MARKER, TRANSFORMER BOX (TX), AIR CONDITIONER (AC), ELECTRIC METER (EM), ELECTRIC UTILITY, LIGHT POLE (LP), POWER POLE WITH LIGHT, POWER POLE (PP), UTILITY MANHOLE (UM), SPOTLIGHT, GAS METER (GM), GAS VALVE (GV), TELEPHONE PEDESTAL, COMMUNICATION BOX, TRAFFIC SIGNAL, BOLLARD (BO), MAIL BOX, SIGN, CROSSWALK SIGNAL, SPOT ELEVATION, CONCRETE AREA, OVERHANG AREA, RIP-RAP AREA, BRICK AREA, TREELINE.

ABBREVIATIONS

- Abbreviations including AC, AE, BSL, BW, CH, CLF, CMF, CMP, CONC, CTP, DB, DIP, FDC, FND, HDPE, IPF, and their corresponding full names.

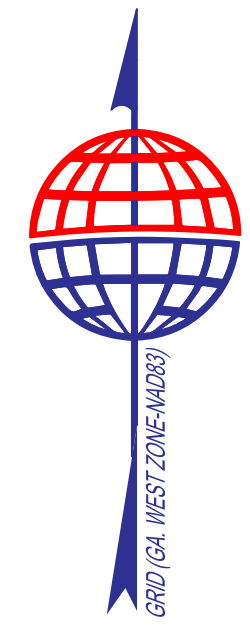
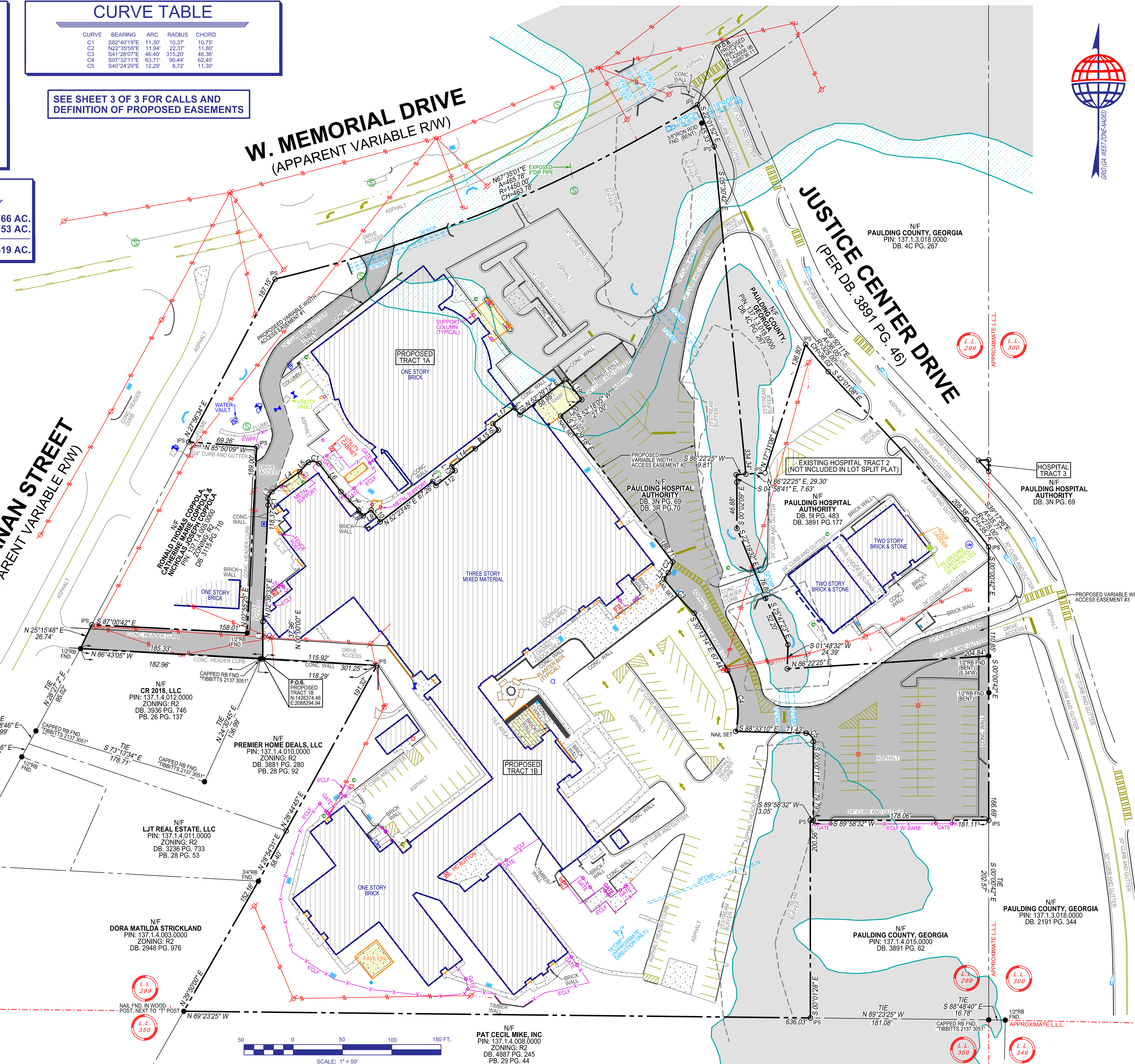
FLOOD ZONE LEGEND

- Flood zone legends including ZONE 'X' (0.2% ANNUAL CHANCE FLOOD HAZARD) and ZONE 'AE' (1% ANNUAL CHANCE FLOOD HAZARD).

BUCHANAN STREET (APPARENT VARIABLE R/W)

W. MEMORIAL DRIVE (APPARENT VARIABLE R/W)

JUSTICE CENTER DRIVE (PER DB. 3891 PG. 46)



TerraMark Geospatial logo and contact information: Phone No. (770) 421-1027, www.TerraMark.com, 1596 Bulls Ferry Road, Marietta, Georgia 30066.

Revision table with columns: No., Description, Date. Shows revision 1 with description 'AS NOTED' and date '06/14/2024'.

LOT SPLIT PLAT FOR KIMLEY-HORN (WELLSTAR HOSPITAL - DALLAS CAMPUS) LOCATED IN LAND LOT 299, 2ND DISTRICT, 3RD SECTION PAULDING COUNTY, GEORGIA

JOB NUMBER: 2024-090 PLOT SIZE: 24 X 36

THIS BLOCK RESERVED FOR THE CLERK OF THE SUPERIOR COURT.

CURVE TABLE

| CURVE | BEARING | ARC | RADIUS | CHORD |
|-------|-------------|--------|---------|--------|
| C1 | N46°53'37"E | 15.07' | 19.11' | 14.85' |
| C2 | N19°07'30"E | 18.34' | 59.83' | 18.27' |
| C3 | N00°33'10"W | 22.38' | 32.56' | 21.94' |
| C4 | N23°43'16"E | 22.34' | 157.19' | 22.92' |
| C5 | N59°40'21"E | 22.54' | 50.09' | 22.45' |
| C6 | N18°07'15"E | 15.54' | 12.84' | 14.58' |
| C7 | N34°29'35"W | 11.11' | 23.83' | 11.01' |
| C8 | S29°20'28"W | 31.06' | 52.14' | 30.60' |
| C9 | S36°48'26"W | 12.62' | 54.88' | 12.59' |
| C10 | S25°10'18"W | 42.66' | 349.73' | 42.63' |
| C11 | S33°17'43"E | 7.21' | 16.11' | 7.15' |
| C12 | S61°46'52"E | 17.68' | 40.37' | 17.54' |
| C13 | N77°48'53"E | 27.89' | 79.58' | 27.75' |
| C14 | N40°24'29"W | 12.29' | 8.72' | 11.30' |
| C15 | N22°35'55"E | 11.34' | 22.37' | 11.80' |
| C16 | N25°07'28"E | 10.48' | 21.01' | 10.37' |
| C17 | N37°14'29"E | 49.32' | 12.14' | 12.11' |
| C18 | N64°33'19"E | 12.93' | 54.83' | 12.90' |

LINE TABLE

| LINE | BEARING | DISTANCE |
|------|-------------|----------|
| L1 | N11°33'47"W | 14.26' |
| L2 | N19°47'59"W | 25.03' |
| L3 | S12°29'58"W | 19.35' |
| L4 | S08°46'19"E | 9.00' |
| L5 | S54°17'50"W | 5.37' |
| L6 | S31°19'38"W | 7.81' |
| L7 | S01°58'33"E | 9.98' |
| L8 | S37°19'44"E | 24.33' |
| L9 | S17°30'17"W | 16.43' |
| L10 | S88°14'23"E | 20.39' |
| L11 | N34°09'21"E | 7.59' |
| L12 | N37°44'27"W | 25.98' |
| L13 | S35°17'23"E | 15.30' |
| L14 | N56°09'57"E | 12.11' |
| L15 | N49°42'33"E | 22.22' |

AREA TABLE

EASEMENT #1: 13,119 SQ.FT. OR 0.3012 AC.
 EASEMENT #2: 58,731 SQ.FT. OR 1.3483 AC.
 EASEMENT #3: 2,665 SQ.FT. OR 0.0612 AC.
TOTAL AREA: 74,515 SQ.FT. OR 1.7107 AC.

PROPOSED EASEMENT DETAIL

W. MEMORIAL DRIVE
 (APPARENT VARIABLE R/W)

JUSTICE CENTER DRIVE
 (PER DB. 3891 PG. 46)

BUCHANAN STREET
 (APPARENT VARIABLE R/W)

LEGEND

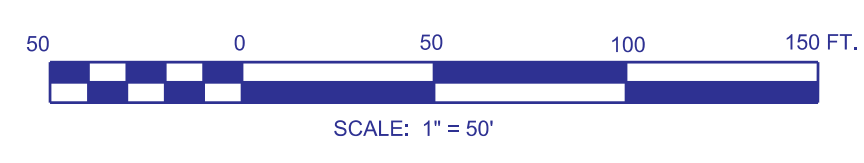
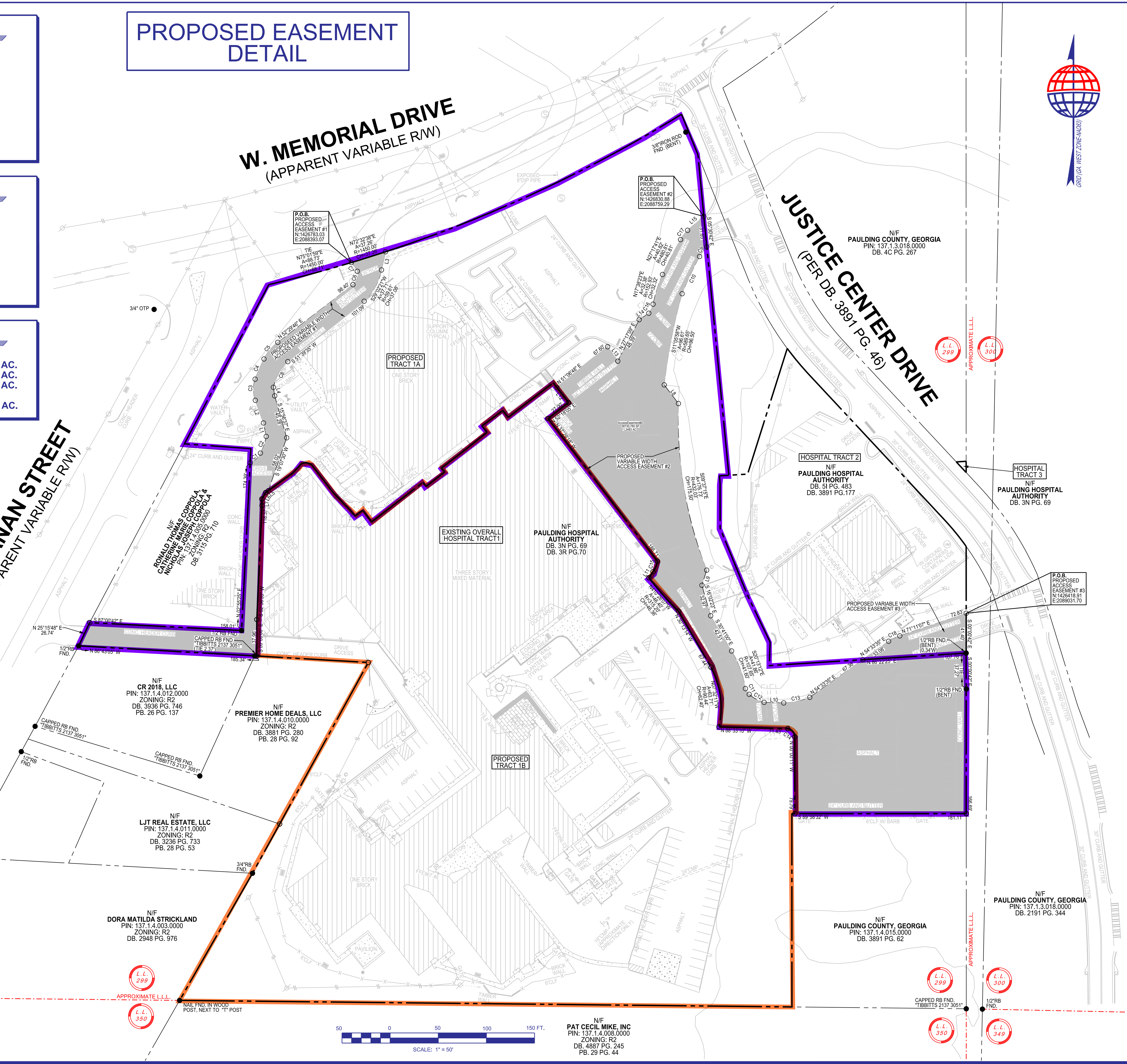
- CURB AND GUTTER (C&G)
- FENCE
- HANDRAIL
- STORM DRAIN LINE
- SANITARY SEWER
- WATER LINE
- GAS LINE
- UNDERGROUND POWER LINE
- OVERHEAD POWER LINE
- COMMUNICATION
- TOPOGRAPHIC CONTOUR
- PROPERTY LINE
- CATCH BASIN (DWCB)
- CATCH BASIN (SWCB)
- DROP INLET (DI)
- JUNCTION BOX (JB)
- HEAD WALL (HW)
- CURB INLET (CI)
- FLARED END SECTION (FES)
- OUTLET CONTROL STRUCTURE
- YARD DRAIN INLET
- SS MANHOLE (MH)
- CLEAN OUT (CO)
- GREASE TRAP (GT)
- IRRIGATION CONTROL VALVE
- FIRE HYDRANT (FH)
- WATER VALVE (WV)
- WATER METER (WM)
- FIRE DEPT. CONNECTION (FDC)
- WATER VALVE MARKER
- TRANSFORMER BOX (TX)
- AIR CONDITIONER (AC)
- ELECTRIC METER (EM)
- ELECTRIC UTILITY
- LIGHT POLE (LP)
- POWER POLE WITH LIGHT
- POWER POLE (PP)
- UTILITY MANHOLE (UM)
- SPOTLIGHT
- GAS METER (GM)
- GAS VALVE (GV)
- TELEPHONE PEDESTAL
- COMMUNICATION BOX
- TRAFFIC SIGNAL
- BOLLARD (BO)
- MAIL BOX
- SIGN
- CROSSWALK SIGNAL
- SPOT ELEVATION
- CONCRETE AREA
- OVERHANG AREA
- RIP-RAP AREA
- BRICK AREA
- TREELINE

LEGEND

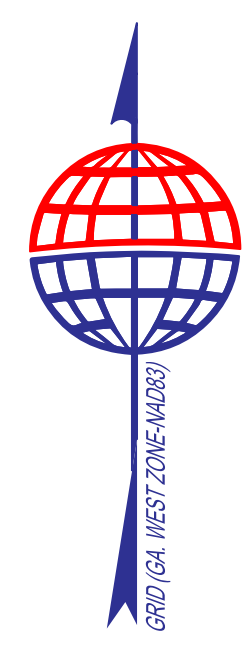
PROPOSED PROPERTY BOUNDARY FOR TRACT 1A

PROPOSED PROPERTY BOUNDARY FOR TRACT 1B

JOB NUMBER: 2024-090 PLOT SIZE: 24 X 36



NIF
 PAT CECIL MIKE, INC
 PIN: 137.1.4.008.0000
 ZONING: R2
 DB. 4887 PG. 245
 PB. 29 PG. 44



Phone No. (770) 421-1027
 www.TerraMark.com
 C. O. A. # LSF000810

TerraMark Land Surveying, Inc.
 1598 Bulls Ferry Road
 Marietta, Georgia 30066

| Project No. | No. | Date | Revision |
|-------------|-----|------------|----------|
| 2024-090 | #1 | 06/14/2024 | 1"=50' |
| | #2 | | |
| | #3 | | |
| | #4 | | |
| | #5 | | |
| | #6 | | |
| | #7 | | |
| | #8 | | |
| | #9 | | |
| | #10 | | |

LOT SPLIT PLAN
 FOR
KIMLEY-HORN
(WELLSTAR HOSPITAL - DALLAS CAMPUS)
 LOCATED IN
 LAND LOT 299, 2ND DISTRICT, 3RD SECTION
 PAULDING COUNTY, GEORGIA

SHEET NO.
3
 3
 DRAWING# TM 24-090

THIS BLOCK RESERVED FOR THE CLERK OF THE SUPERIOR COURT.

CURVE TABLE

| CURVE | BEARING | ARC | RADIUS | CHORD |
|-------|-------------|--------|---------|--------|
| C1 | N46°53'37"E | 15.07' | 19.11' | 14.85' |
| C2 | N19°07'30"E | 18.34' | 59.83' | 18.27' |
| C3 | N00°33'10"W | 22.38' | 32.56' | 21.94' |
| C4 | N23°43'16"E | 22.34' | 157.19' | 22.92' |
| C5 | N59°40'21"E | 22.54' | 50.09' | 22.45' |
| C6 | N18°07'15"E | 15.54' | 12.84' | 14.58' |
| C7 | N34°29'35"W | 11.11' | 23.83' | 11.01' |
| C8 | S29°20'28"W | 31.06' | 52.14' | 30.60' |
| C9 | S36°48'26"W | 12.62' | 54.88' | 12.59' |
| C10 | S25°10'18"W | 42.66' | 349.73' | 42.63' |
| C11 | S33°17'43"E | 7.21' | 16.11' | 7.15' |
| C12 | S81°46'52"E | 17.88' | 40.37' | 17.54' |
| C13 | N77°48'33"E | 27.89' | 79.58' | 27.75' |
| C14 | N40°24'29"W | 12.29' | 8.72' | 11.30' |
| C15 | N22°35'55"E | 11.34' | 22.37' | 11.80' |
| C16 | N25°07'28"E | 10.48' | 21.01' | 10.37' |
| C17 | N37°14'29"E | 49.32' | 12.14' | 12.11' |
| C18 | N64°33'19"E | 12.93' | 54.83' | 12.90' |

LINE TABLE

| LINE | BEARING | DISTANCE |
|------|-------------|----------|
| L1 | N11°33'47"W | 14.26' |
| L2 | N19°47'59"W | 25.03' |
| L3 | S12°29'58"W | 19.35' |
| L4 | S08°46'19"E | 9.00' |
| L5 | S54°17'50"W | 5.37' |
| L6 | S31°19'38"W | 7.81' |
| L7 | S01°56'33"E | 6.96' |
| L8 | S37°19'44"E | 24.33' |
| L9 | S17°30'17"W | 16.43' |
| L10 | S88°14'23"E | 20.39' |
| L11 | N34°09'21"E | 7.59' |
| L12 | N37°44'27"W | 25.98' |
| L13 | S35°17'23"E | 15.30' |
| L14 | N56°09'57"E | 12.11' |
| L15 | N49°42'33"E | 22.22' |

AREA TABLE

EASEMENT #1: 13,119 SQ.FT. OR 0.3012 AC.
 EASEMENT #2: 58,731 SQ.FT. OR 1.3483 AC.
 EASEMENT #3: 2,665 SQ.FT. OR 0.0612 AC.
TOTAL AREA: 74,515 SQ.FT. OR 1.7107 AC.

LEGEND

- CURB AND GUTTER (C&G)
- FENCE
- HANDRAIL
- STORM DRAIN LINE
- SANITARY SEWER
- WATER LINE
- GAS LINE
- UNDERGROUND POWER LINE
- OVERHEAD POWER LINE
- COMMUNICATION
- TOPOGRAPHIC CONTOUR
- PROPERTY LINE
- CATCH BASIN (DWCB)
- CATCH BASIN (SWCB)
- DROP INLET (DI)
- JUNCTION BOX (JB)
- HEAD WALL (HW)
- CURB INLET (CI)
- FLARED END SECTION (FES)
- OUTLET CONTROL STRUCTURE
- YARD DRAIN INLET
- SS MANHOLE (MH)
- CLEAN OUT (CO)
- GREASE TRAP (GT)
- IRRIGATION CONTROL VALVE
- FIRE HYDRANT (FH)
- WATER VALVE (WV)
- WATER METER (WM)
- FIRE DEPT. CONNECTION (FDC)
- WATER VALVE MARKER
- TRANSFORMER BOX (TX)
- AIR CONDITIONER (AC)
- ELECTRIC METER (EM)
- ELECTRIC UTILITY
- LIGHT POLE (LP)
- POWER POLE WITH LIGHT
- POWER POLE (PP)
- UTILITY MANHOLE (UM)
- SPOTLIGHT
- GAS METER (GM)
- GAS VALVE (GV)
- TELEPHONE PEDESTAL
- COMMUNICATION BOX
- TRAFFIC SIGNAL
- BOLLARD (BO)
- MAIL BOX
- SIGN
- CROSSWALK SIGNAL
- SPOT ELEVATION
- CONCRETE AREA
- OVERHANG AREA
- RIP-RAP AREA
- BRICK AREA
- TREELINE

LEGEND

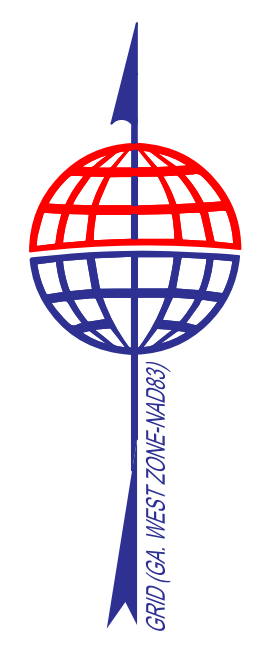
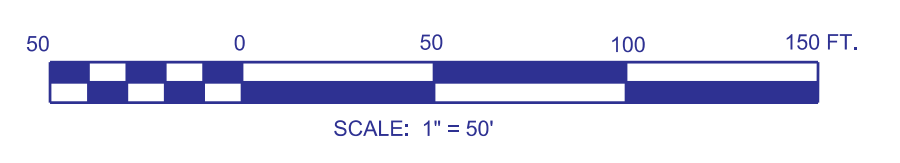
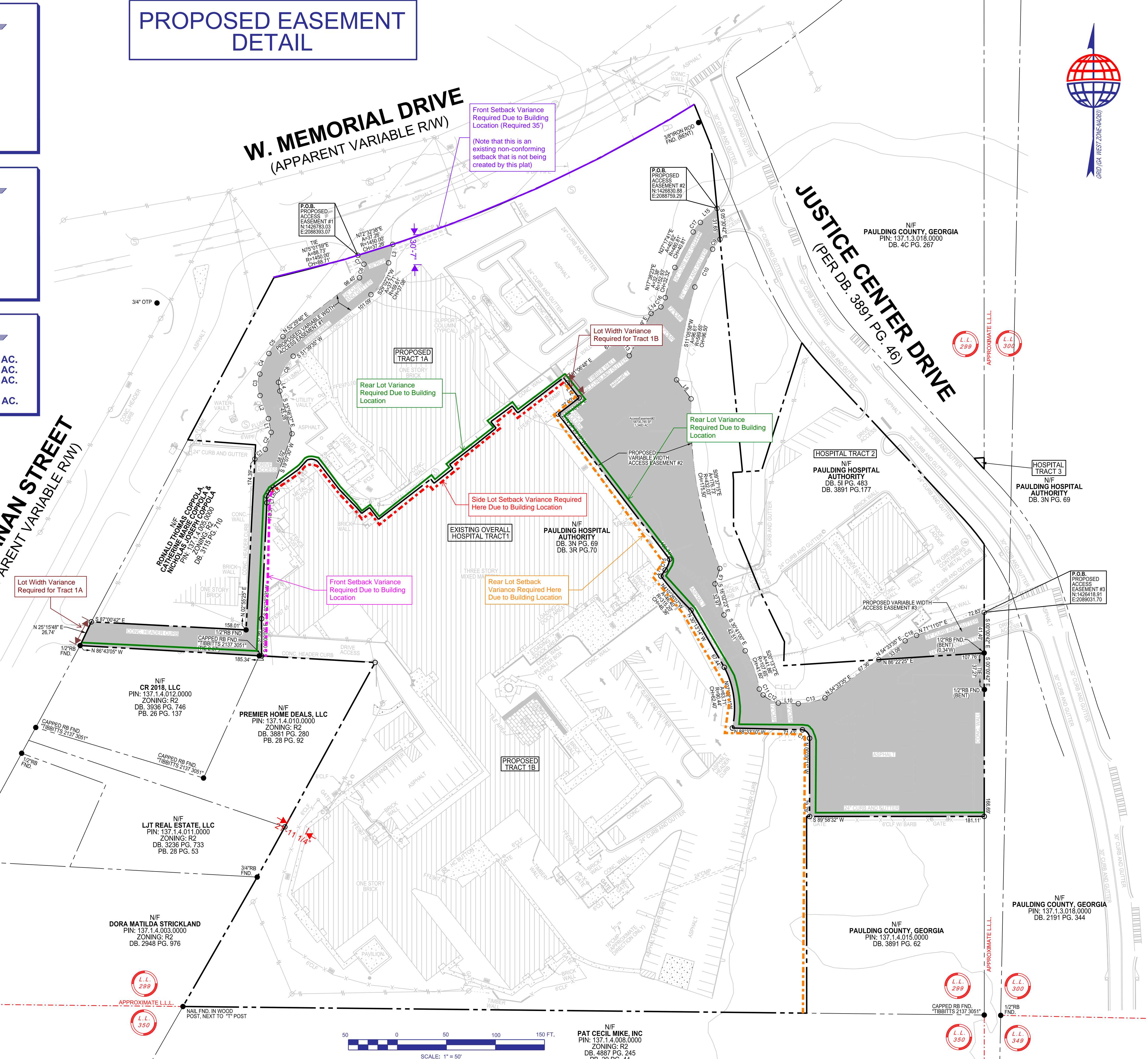
- FRONT SETBACK -TRACT 1A
- SIDE LOT SETBACK -TRACT 1A
- REAR LOT SETBACK -TRACT 1A
- LOT WIDTH -TRACT 1A
- FRONT SETBACK -TRACT 1B
- SIDE LOT SETBACK -TRACT 1B
- REAR LOT SETBACK -TRACT 1A

PROPOSED EASEMENT DETAIL

BUCHANAN STREET
(APPARENT VARIABLE R/W)

W. MEMORIAL DRIVE
(APPARENT VARIABLE R/W)

JUSTICE CENTER DRIVE
(PER DB. 3891 PG. 46)



Phone No. (770) 421-1927
 www.TerraMark.com
 C. O. A. # LSF00819

TerraMark
 Geospatial

TerraMark Land Surveying, Inc.
 1596 Bulls Ferry Road
 Marietta, Georgia 30066

| Project No. | No. | Date | Revision |
|-------------|-----|------------|----------|
| 2024060 | #1 | 06/14/2024 | 1"=50' |
| | #2 | | |
| | #3 | | |
| | #4 | | |
| | #5 | | |
| | #6 | | |
| | #7 | | |
| | #8 | | |
| | #9 | | |

LOT SPLIT PLAN
 FOR
KIMLEY-HORN
(WELLSTAR HOSPITAL - DALLAS CAMPUS)
 LOCATED IN
LAND LOT 299, 2ND DISTRICT, 3RD SECTION
PAULDING COUNTY, GEORGIA

JOB NUMBER 2024-090 PLOT SIZE 24 X 36