



*Architecture shown is an artistic or conceptual representation of the proposed product. Final architecture is subject to change.

MATERIALS TO INCLUDE:

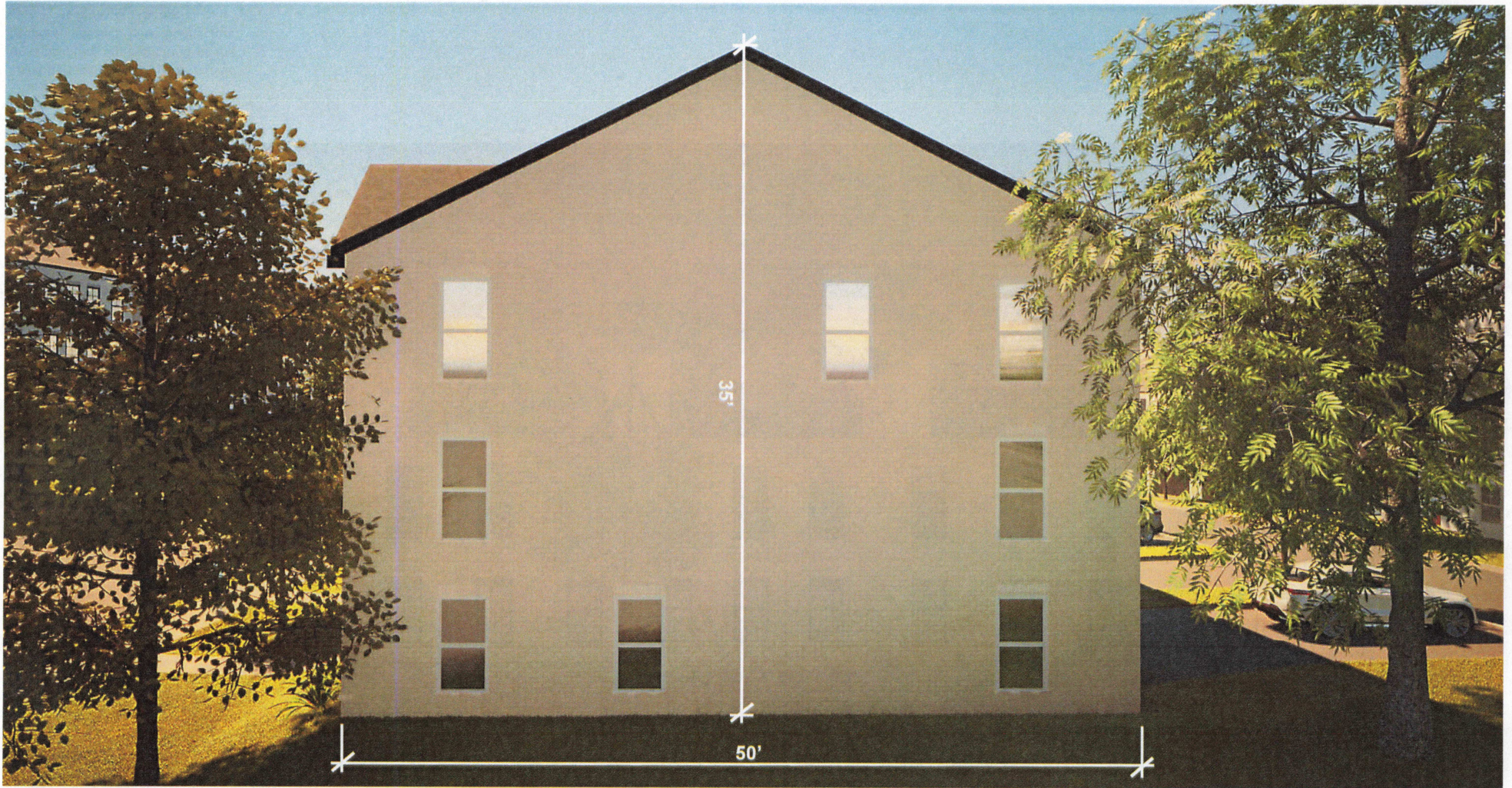
- BRICK
- CEMENTITIOUS SIDING
- ASPHALT SHINGLES



*Architecture shown is an artistic or conceptual representation of the proposed product. Final architecture is subject to change.

MATERIALS TO INCLUDE:

- BRICK
- CEMENTITIOUS SIDING
- ASPHALT SHINGLES



*Architecture shown is an artistic or conceptual representation of the proposed product. Final architecture is subject to change.

MATERIALS TO INCLUDE:

- BRICK
- CEMENTITIOUS SIDING
- ASPHALT SINGLES



*Architecture shown is an artistic or conceptual representation of the proposed product. Final architecture is subject to change.

MATERIALS TO INCLUDE:

- BRICK
- CEMENTITIOUS SIDING



*Architecture shown is an artistic or conceptual representation of the proposed product. Final architecture is subject to change.

MATERIALS TO INCLUDE:

- BRICK
- CEMENTITIOUS SIDING
- ASPHALT SHINGLES



*Architecture shown is an artistic or conceptual representation of the proposed product. Final architecture is subject to change.

MATERIALS TO INCLUDE:

- BRICK
- CEMENTITIOUS SIDING



*Architecture shown is an artistic or conceptual representation of the proposed product. Final architecture is subject to change.

MATERIALS TO INCLUDE:

- BRICK
- CEMENTITIOUS SIDING
- WOOD ACCENTS



*Architecture shown is an artistic or conceptual representation of the proposed product. Final architecture is subject to change.

MATERIALS TO INCLUDE:

- BRICK AND/OR
- STUCCO
- STONE



*Rendering shown is an artistic or conceptual representation and is subject to change.



*Rendering shown is an artistic or conceptual representation and is subject to change.



*Rendering shown is an artistic or conceptual representation of the proposed product. Final architecture is subject to change.



*Rendering shown is an artistic or conceptual representation and is subject to change.