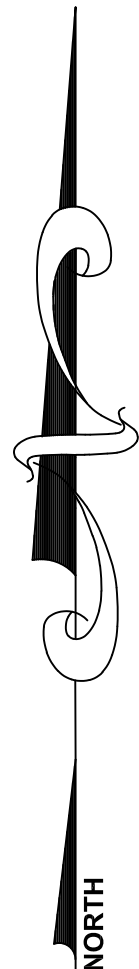
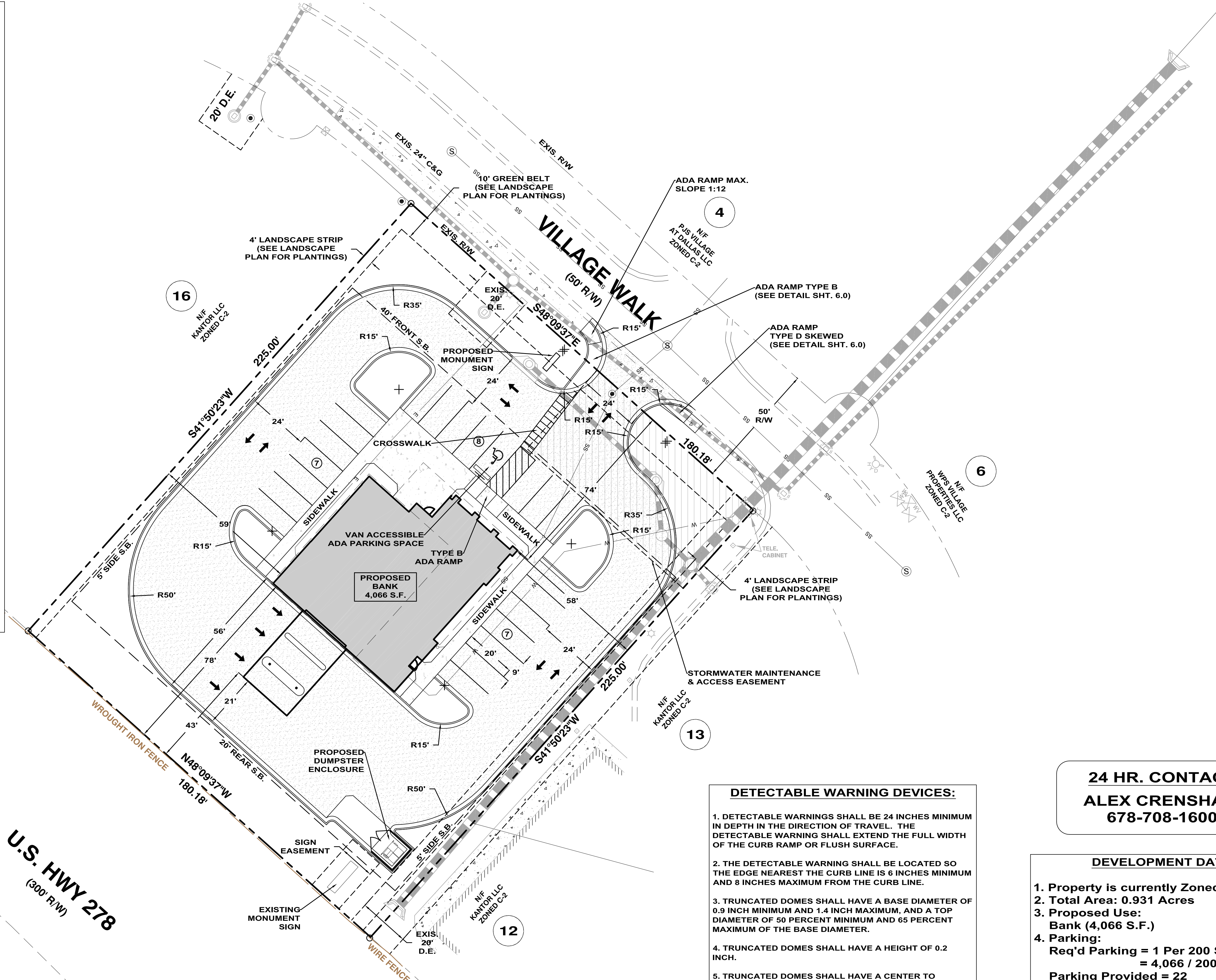


CONCRETE SIDEWALKS & CURBS:

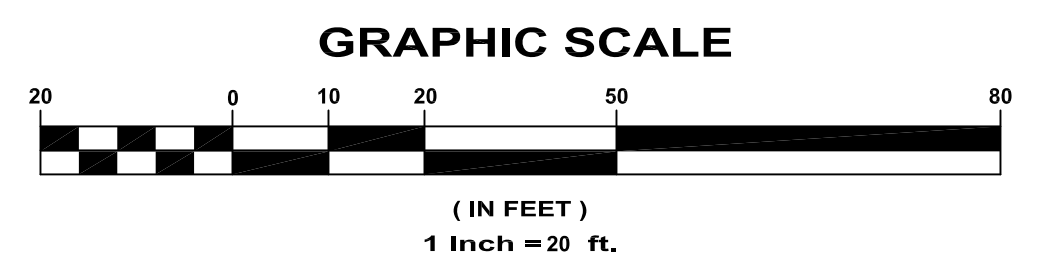
1. USE CONCRETE THAT CONFORMS TO THE MINIMUM REQUIREMENTS FOR CLASS "B", AS SPECIFIED BY GDOT STANDARD SPECIFICATIONS SECTION 500.
2. CONCRETE SHALL ONLY BE PLACED WHEN THE AIR TEMPERATURE 40° F AND RISING. PROTECT CONCRETE FROM FREEZING FOR THE FIRST 24 HOURS. HAND FINISHING IS ALLOWED.
3. CONCRETE SIDEWALKS SHALL HAVE A TYPE V FINISH UNLESS OTHERWISE NOTED ON THE PLANS. TEST THE SURFACE WITH A 10 FT. STRAIGHTEDGE LAID PARALLEL TO THE CENTER LINE. ELIMINATE IRREGULARITIES GREATER THAN 0.25 IN. PER 10 FT. WHILE THE CONCRETE IS STILL PLASTIC. ENSURE THAT CONCRETE SIDEWALK CONSTRUCTED AS CURB CUT (WHEELCHAIR) RAMPS HAS A ROUGH OR TEXTURED FINISH.
4. FOR CONCRETE SIDEWALKS, FORM TRANSVERSE CONTRACTION JOINTS USING A TOOL DESIGNED TO FORM A GROOVE ONE-THIRD THE DEPTH OF THE SIDEWALK AT INTERVALS SHOWN ON THE PLANS.
5. WHERE SIDEWALKS ABUT CURB AND GUTTER, ENSURE THAT ALTERNATE JOINTS COINCIDE. ROUND THE EDGES WITH A 0.25 IN. EDGER. MAKE EXPANSION JOINTS ACCORDING TO THE MATERIALS, DIMENSIONS, AND LOCATIONS SPECIFIED ON THE PLANS.
6. FOR CONCRETE CURB AND GUTTERS, FORM CONTRACTION JOINTS AT LEAST ONE-FIFTH BUT NO GREATER THAN ONE-FOURTH THE DEPTH OF THE CONCRETE. INSTALL CONTRACTION JOINTS SPACED NO MORE THAN 20 FT. APART.
7. FOR CURB CUT WHEELCHAIR RAMPS, LOCATE AND FORM EXPANSION JOINTS ACCORDING TO SPECIAL DETAILS FOR RAMP TYPE A, B, C OR D.
8. USE CURING METHODS SPECIFIED IN GDOT STANDARD SPECIFICATIONS SUBSECTION 430.3.05.L, CURE THE CONCRETE. ENSURE THAT THE MEMBRANE CURING COMPOUND IS TYPE 2, IF USED. PACK HONEYCOMBED AREAS IMMEDIATELY AFTER REMOVING THE FORMS.
9. BACKFILL THE AREAS AS SOON AS POSSIBLE WITHOUT DAMAGING THE WORK.
10. WHEN CONCRETE WORK IS COMPLETE, CLEAN EACH SURFACE AND PROTECT THE WORK FROM STAINS OR OTHER DAMAGE UNTIL FINAL ACCEPTANCE.
11. DEPOSIT CONCRETE WITHIN FORMS OR AGAINST OTHER PAVEMENTS ON A COMPACTED AND WETTED SUBGRADE TO THE DEPTH TO PRODUCE THE SPECIFIED THICKNESS. DO NOT PLACE CONCRETE ON A MUDDY OR FROZEN SURFACE.
12. MIX CLASS B CONCRETE AS SPECIFIED IN GDOT STANDARD SPECIFICATIONS SECTION 500.
13. MINIMUM THICKNESS OF SIDEWALKS SHALL BE 4 INCHES. THE MINIMUM WIDTH OF SIDEWALKS SHALL BE 5 FEET, EXCEPT AS SHOWN OTHERWISE ON THE PLAN.



- DETECTABLE WARNING DEVICES:**
1. DETECTABLE WARNINGS SHALL BE 24 INCHES MINIMUM IN DEPTH IN THE DIRECTION OF TRAVEL. THE DETECTABLE WARNING SHALL EXTEND THE FULL WIDTH OF THE CURB RAMP OR FLUSH SURFACE.
 2. THE DETECTABLE WARNING SHALL BE LOCATED SO THE EDGE NEAREST THE CURB LINE IS 6 INCHES MINIMUM AND 8 INCHES MAXIMUM FROM THE CURB LINE.
 3. TRUNCATED DOMES SHALL HAVE A BASE DIAMETER OF 0.9 INCH MINIMUM AND 1.4 INCH MAXIMUM, AND A TOP DIAMETER OF 50 PERCENT MINIMUM AND 65 PERCENT MAXIMUM OF THE BASE DIAMETER.
 4. TRUNCATED DOMES SHALL HAVE A HEIGHT OF 0.2 INCH.
 5. TRUNCATED DOMES SHALL HAVE A CENTER TO CENTER SPACING OF 1.6 INCHES MINIMUM AND 2.4 INCHES MAXIMUM, AND A BASE TO BASE SPACING OF 0.65 INCH MINIMUM, MEASURED BETWEEN THE MOST ADJACENT DOMES ON THE GRID.
 6. TRUNCATED DOMES SHALL BE ALIGNED IN A SQUARE GRID PATTERN.

24 HR. CONTACT
ALEX CRENSHAW
678-708-1600

- DEVELOPMENT DATA:**
1. Property is currently Zoned: C-2
 2. Total Area: 0.931 Acres
 3. Proposed Use:
Bank (4,066 S.F.)
 4. Parking:
Req'd Parking = 1 Per 200 S.F.
= 4,066 / 200 = 21
Parking Provided = 22
 5. Building Setbacks:
Front - 40'
Side - 5'
Rear - 20'
 6. Sewer: Public
 7. Water: Public



FLOOD NOTE: NO PORTIONS OF THIS PROPERTY LIE WITHIN A SPECIAL FLOOD HAZARD AREA AS SHOWN ON CITY OF DALLAS, GEORGIA F.E.M.A. FLOOD RATE INSURANCE MAP, COMMUNITY PANEL NUMBER 13223C0137C, DATED SEP. 29, 2006.



REVISIONS

8/18/23	- REVISED PER CITY OF DALLAS REVIEW COMMENTS.
10/05/23	- REVISED PER CITY OF DALLAS REVIEW COMMENTS.

www.perspectiveeng.com

PERSPECTIVE ENGINEERING

4255 Wade Green Road, #625
 Kennesaw, Georgia 30144
 Ph: (678) 567-1203

GA SOS Eng. Firm Lic #PEF003958

JULIAN

JOB NUMBER: 2023-710
 DRAWN BY: J.LJ

PROJECT NAME
 FIRST NATIONAL COMMUNITY BANK
 LAND LOT 374, 2ND DISTRICT, 3RD SECTION
 CITY OF DALLAS, PAULDING COUNTY, GEORGIA

CLIENT NAME
 FIRST NATIONAL COMMUNITY BANK
 701 NORTH THIRD AVENUE
 CHATSWORTH, GEORGIA 30705

SEAL

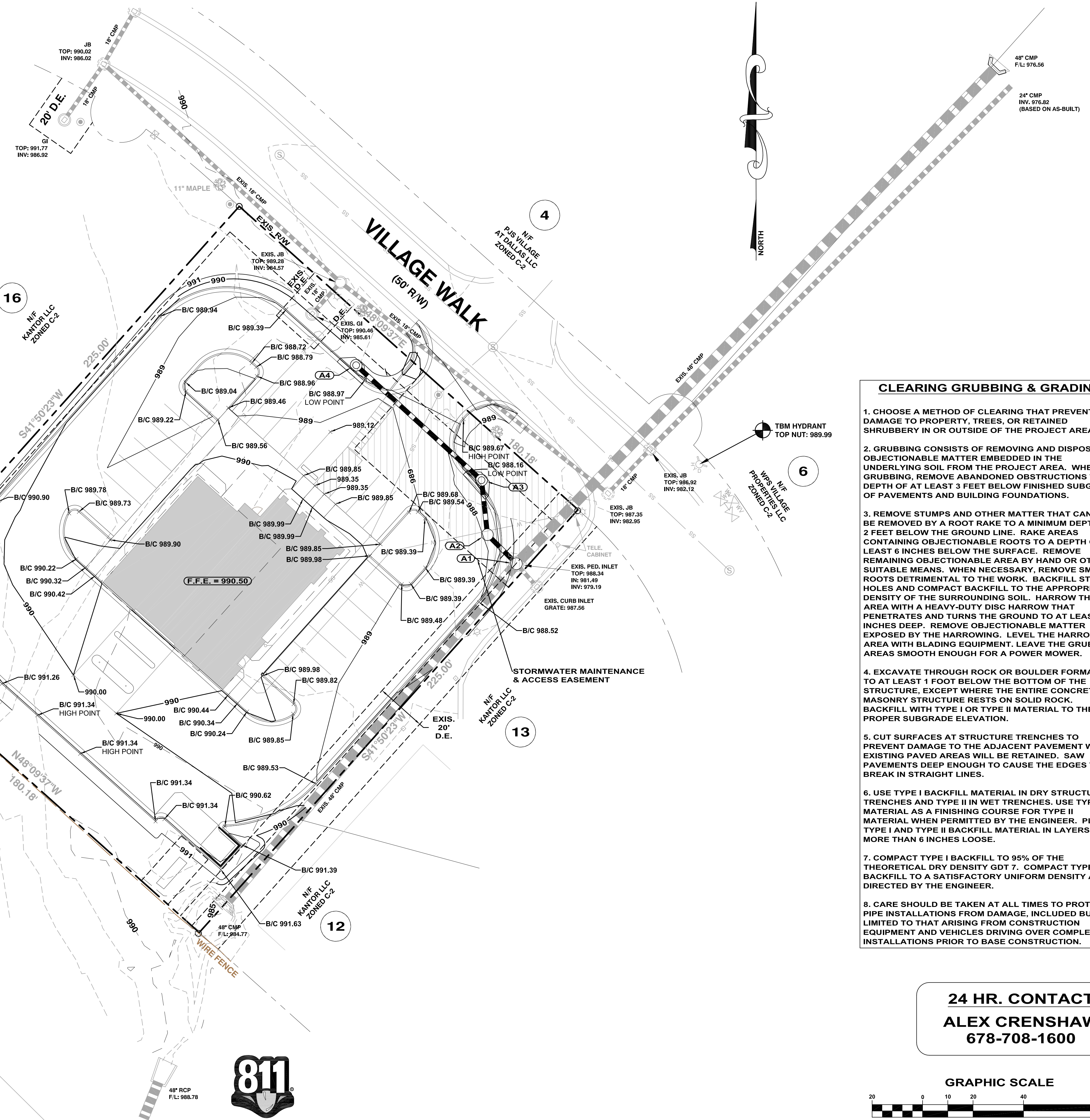
10/05/23

SITE PLAN

2.0

STORM DRAIN PIPE:

1. FOR STORM DRAIN APPLICATIONS USE GRADED AGGREGATE MATERIAL MEETING GDOT STANDARD SPECIFICATIONS SECTION 815 FOR BACKFILL MATERIAL.
2. PROVIDE NECESSARY TEMPORARY DRAINAGE. PERIODICALLY REMOVE ANY DEBRIS OR SILT CONSTRICTING THE PIPE FLOW TO MAINTAIN DRAINAGE THROUGHOUT THE LIFE OF THE CONTRACT.
3. PROTECT THE STRUCTURE BY PROVIDING SUFFICIENT DEPTH AND WIDTH OF COMPACTED BACKFILL BEFORE ALLOWING CONSTRUCTION OVER A CULVERT. REPAIR DAMAGE OR DISPLACEMENT FROM TRAFFIC OR EROSION OCCURRING AFTER INSTALLING AND BACKFILLING.
4. CHECK VERTICAL AND HORIZONTAL ALIGNMENT OF THE PIPE CULVERT OR PIPE BARREL BY SIGHTING ALONG THE CROWN, INVERT AND SIDES OF THE PIPE, AND BY CHECKING FOR SAGGING, FAULTING AND INVERT HEAVING. REPAIR ANY ISSUES INVOLVING INCORRECT HORIZONTAL AND/OR VERTICAL ALIGNMENT BEFORE BACKFILLING PIPE.
5. INSTALL SMOOTH-LINED CORRUGATED HDPE PIPE ACCORDING TO ASTM D 2321 AS PER PLANS USING BACKFILL REQUIREMENTS IN GDOT STANDARD SPECIFICATIONS SUBSECTION 550.3.03. USE FITTINGS AND COUPLINGS THAT COMPLY WITH THE JOINT PERFORMANCE CRITERIA OF AASHTO STANDARD SPECIFICATIONS FOR HIGHWAY BRIDGES, DIVISION II. ENSURE ALL JOINTS ARE "SILT TIGHT" AS STATED IN THE AASHTO BRIDGE SPECIFICATIONS.



CLEARING GRUBBING & GRADING:

1. CHOOSE A METHOD OF CLEARING THAT PREVENTS DAMAGE TO PROPERTY, TREES, OR RETAINED SHRUBBERY IN OR OUTSIDE OF THE PROJECT AREA.
2. GRUBBING CONSISTS OF REMOVING AND DISPOSING OBJECTIONABLE MATTER EMBEDDED IN THE UNDERLYING SOIL FROM THE PROJECT AREA. WHEN GRUBBING, REMOVE ABANDONED OBSTRUCTIONS TO A DEPTH OF AT LEAST 3 FEET BELOW FINISHED SUBGRADE OF PAVEMENTS AND BUILDING FOUNDATIONS.
3. REMOVE STUMPS AND OTHER MATTER THAT CANNOT BE REMOVED BY A ROOT RAKE TO A MINIMUM DEPTH OF 2 FEET BELOW THE GROUND LINE. RAKE AREAS CONTAINING OBJECTIONABLE ROOTS TO A DEPTH OF AT LEAST 6 INCHES BELOW THE SURFACE. REMOVE REMAINING OBJECTIONABLE AREA BY HAND OR OTHER SUITABLE MEANS. WHEN NECESSARY, REMOVE SMALL ROOTS DETRIMENTAL TO THE WORK. BACKFILL STUMP HOLES AND COMPACT BACKFILL TO THE APPROPRIATE DENSITY OF THE SURROUNDING SOIL. HARROW THE AREA WITH A HEAVY-DUTY DISC HARROW THAT PENETRATES AND TURNS THE GROUND TO AT LEAST 6 INCHES DEEP. REMOVE OBJECTIONABLE MATTER EXPOSED BY THE HARROWING. LEVEL THE HARROWED AREA WITH BLADING EQUIPMENT. LEAVE THE GRUBBED AREAS SMOOTH ENOUGH FOR A POWER MOWER.
4. EXCAVATE THROUGH ROCK OR BOULDER FORMATIONS TO AT LEAST 1 FOOT BELOW THE BOTTOM OF THE STRUCTURE, EXCEPT WHERE THE ENTIRE CONCRETE OR MASONRY STRUCTURE RESTS ON SOLID ROCK. BACKFILL WITH TYPE I OR TYPE II MATERIAL TO THE PROPER SUBGRADE ELEVATION.
5. CUT SURFACES AT STRUCTURE TRENCHES TO PREVENT DAMAGE TO THE ADJACENT PAVEMENT WHEN EXISTING PAVED AREAS WILL BE RETAINED. SAW PAVEMENTS DEEP ENOUGH TO CAUSE THE EDGES TO BREAK IN STRAIGHT LINES.
6. USE TYPE I BACKFILL MATERIAL IN DRY STRUCTURE TRENCHES AND TYPE II IN WET TRENCHES. USE TYPE I MATERIAL AS A FINISHING COURSE FOR TYPE II MATERIAL WHEN PERMITTED BY THE ENGINEER. PLACE TYPE I AND TYPE II BACKFILL MATERIAL IN LAYERS NO MORE THAN 6 INCHES LOOSE.
7. COMPACT TYPE I BACKFILL TO 95% OF THE THEORETICAL DRY DENSITY GDT 7. COMPACT TYPE II BACKFILL TO A SATISFACTORY UNIFORM DENSITY AS DIRECTED BY THE ENGINEER.
8. CARE SHOULD BE TAKEN AT ALL TIMES TO PROTECT PIPE INSTALLATIONS FROM DAMAGE, INCLUDED BUT NOT LIMITED TO THAT ARISING FROM CONSTRUCTION EQUIPMENT AND VEHICLES DRIVING OVER COMPLETED INSTALLATIONS PRIOR TO BASE CONSTRUCTION.

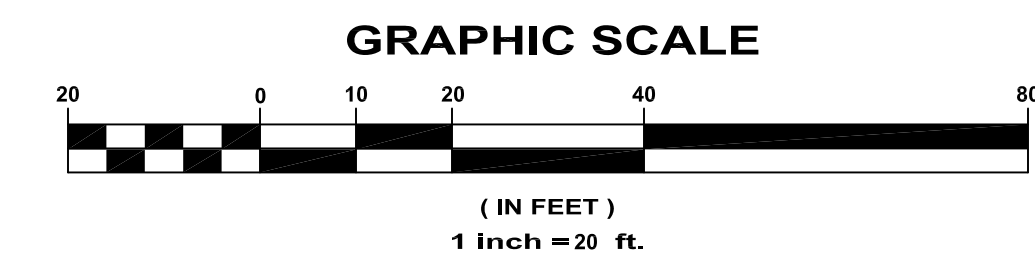
NOTES:

1. PLANIMETRIC AND TOPOGRAPHIC FEATURES SHOWN ON THIS PLAN ARE BASED ON TOPOGRAPHIC SURVEY FOR LOT 14 OF THE VILLAGE AT DALLAS BY CARLTON RAKESTRAW & ASSOCIATES DATED FEBRUARY 17, 2023. ELEVATIONS SHOWN ARE BASED ON NAVD 88. ALL EXISTING CONDITIONS SHOULD BE VERIFIED BY THE CONTRACTOR PRIOR TO BEGINNING CONSTRUCTION.
2. ANY DISCREPANCIES IN FIELD CONDITIONS FROM WHAT IS SHOWN ON THIS PLAN SHOULD BE REPORTED TO THE ENGINEER PRIOR TO PROCEEDING WITH WORK.

FLOOD NOTE: NO PORTIONS OF THIS PROPERTY LIE WITHIN A SPECIAL FLOOD HAZARD AREA AS SHOWN ON CITY OF DALLAS, GEORGIA F.E.M.A. FLOOD RATE INSURANCE MAP, COMMUNITY PANEL NUMBER 13223C0137C, DATED SEP. 29, 2006.



24 HR. CONTACT
ALEX CRENSHAW
 678-708-1600



REVISIONS
8/18/23 - REVISED PER CITY OF DALLAS REVIEW COMMENTS.
10/5/23 - REVISED PER CITY OF DALLAS REVIEW COMMENTS.

PERSPECTIVE ENGINEERING
 www.perspectiveeng.com
 4255 Wade Green Road, #625
 Kennesaw, Georgia 30144
 Ph: (678) 567-1203
 GA SOS Eng. Firm Lic #PEF003958

JULIA

JOB NUMBER: 2023-710
 DRAWN BY: JLJ

PROJECT NAME
 FIRST NATIONAL COMMUNITY BANK
 LAND LOT 374, 2ND DISTRICT, 3RD SECTION
 CITY OF DALLAS, PAULDING COUNTY, GEORGIA

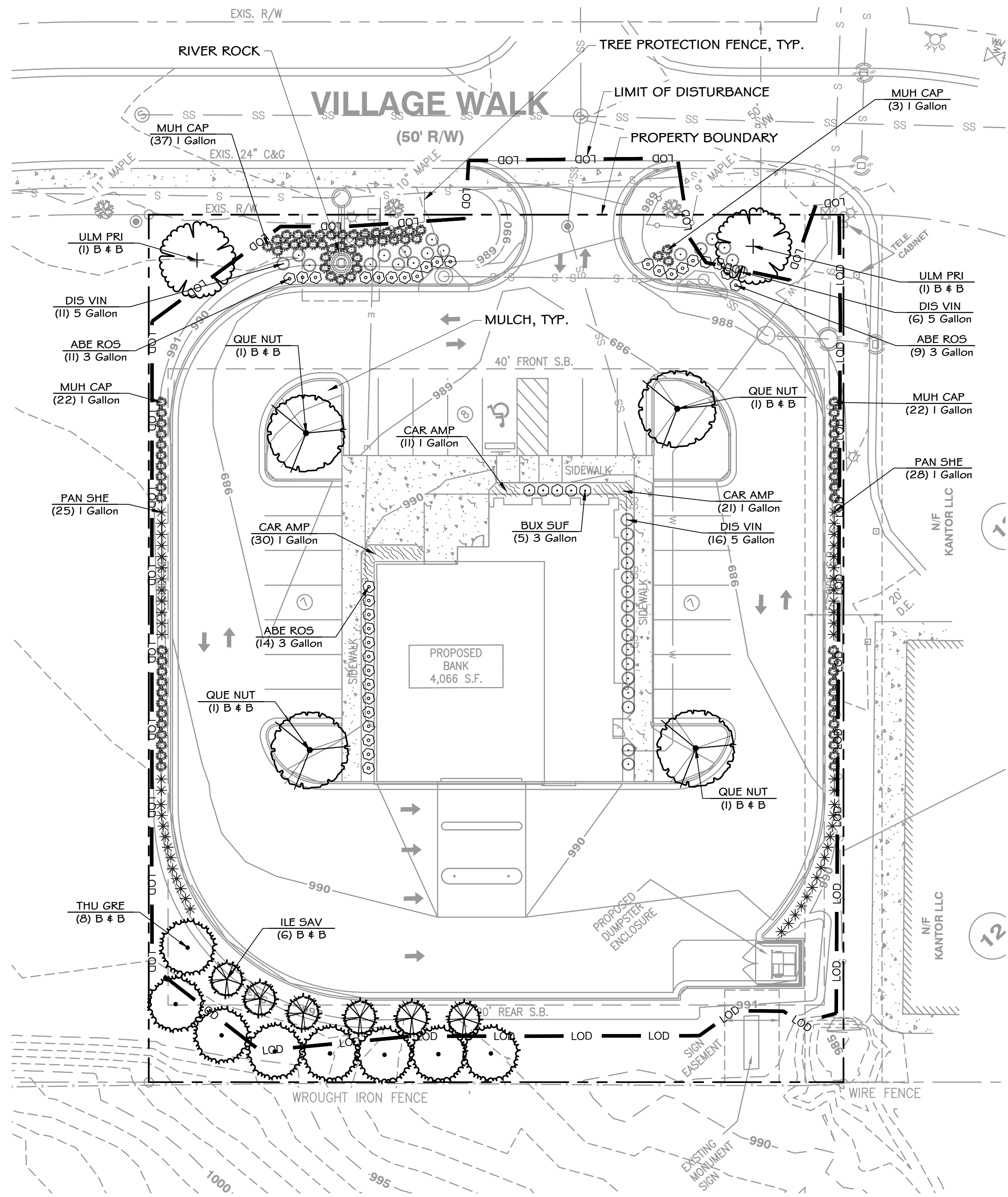
CLIENT NAME
 FIRST NATIONAL COMMUNITY BANK
 701 NORTH THIRD AVENUE
 CHATSWORTH, GEORGIA 30705

SEAL

10/05/23

GRADING & DRAINAGE PLAN

4.0



PLANT SCHEDULE

TREES	CODE	QTY	BOTANICAL / COMMON NAME	CONT	CAL	SPEC SIZE
ILE SAV		6	ILEX X ATTENUATA 'SAVANNAH' / SAVANNAH HOLLY FULL TO GROUND, SINGLE STRAIGHT LEADER, GOOD FORM, HEALTHY	B # B	2"	8-10' HT.
QUE NUT		4	QUERCUS NUTTALLII / NUTTALL OAK SINGLE STRAIGHT LEADER, HEALTHY, GOOD FORM	B # B	2"	8-10' HT.
THU GRE		8	THUJA STANDISHII X PPLICATA 'GREEN GIANT' / GREEN GIANT ARBORVITAE FULL TO GROUND, GOOD FORM, HEALTHY	B # B	2"	8-10' HT.
ULM PRI		2	ULMUS AMERICANA 'PRINCETON' / AMERICAN ELM SINGLE STRAIGHT LEADER, HEALTHY, GOOD FORM	B # B	2"	8-10' HT.
SHRUBS	CODE	QTY	BOTANICAL / COMMON NAME	CONT SIZE	SPEC SIZE	
ABE ROS		34	ABELIA X GRANDIFLORA 'ROSE CREEK' / ROSE CREEK ABELIA FULL IN POT, GOOD FORM, HEALTHY	3 GALLON	12" HT.	
BUX SUF		5	BUXUS SEMPERVIRENS 'SUFFRUTICOSA' / SUFFRUTICOSA COMMON BOXWOOD FULL IN POT, GOOD FORM, HEALTHY	3 GALLON	12" HT.	
DIS VIN		33	DISTYLIUM MYRICOIDES VINTAGE JADE / VINTAGE JADE DISTYLIUM FULL IN POT, GOOD FORM, HEALTHY	5 GALLON	24-36" HT.	
MUH CAP		84	MUHLENBERGIA CAPILLARIS / PINK MUHLY GRASS	1 GALLON	6-12" HT.	
PAN SHE		53	PANICUM VIRGATUM 'SHENANDOAH' / SHENANDOAH SWITCH GRASS	1 GALLON	6-12" HT.	
GROUND COVERS	CODE	QTY	BOTANICAL / COMMON NAME	CONT SIZE		
CAR AMP		62	CAREX AMPHIBOLA / CREEK SEDGE	1 GALLON		18" o.c.
RIVER ROCK	QTY		DESCRIPTION / SIZE			
	1 CY		SMALL RIVER ROUNDS / FLATS, APPROX. 2 TO 4 INCHES IN SIZE, AVAILABLE AS ROUNDS OR FLATS, SMOOTH SURFACE, VARIOUS SHADES OF CREAM, TAN, # BROWN			

10' WIDE GREENBELT ON FRONT SIDE OF PROPOSED BUILDING PROVIDED

4' WIDE LANDSCAPE STRIP ALONG SIDES OF PARKING AREAS PROVIDED

PLANTING WITHIN PARKING LOT INCLUDING SHADE TREES PROVIDED

EVERGREEN SCREENING PROVIDED

PROJECT:
FIRST NATIONAL COMMUNITY BANK

LOCATION:
VILLAGE WALK
LL 374
DISTRICT 2
PAULDING COUNTY
CITY OF DALLAS, GA

OWNER/DEVELOPER:
ALEX CRENSHAW
678-708-1600

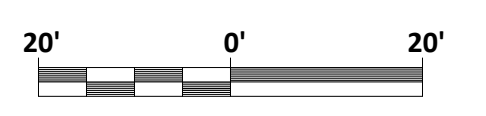
ENGINEER:
PERSPECTIVE ENGINEERING
JERRY JOHNSON, PE
678-567-1203

CONSULTANT:

TJ SCHELL, LLC
Landscape Architect • Consulting Arborist
770.361.2319
teresa@tjschell.com
2985 Gordy Pkwy., Ste. 422, Marietta, GA 30066

SEAL:

TERESA H. ELDRIDGE
ISA - SO-5442A

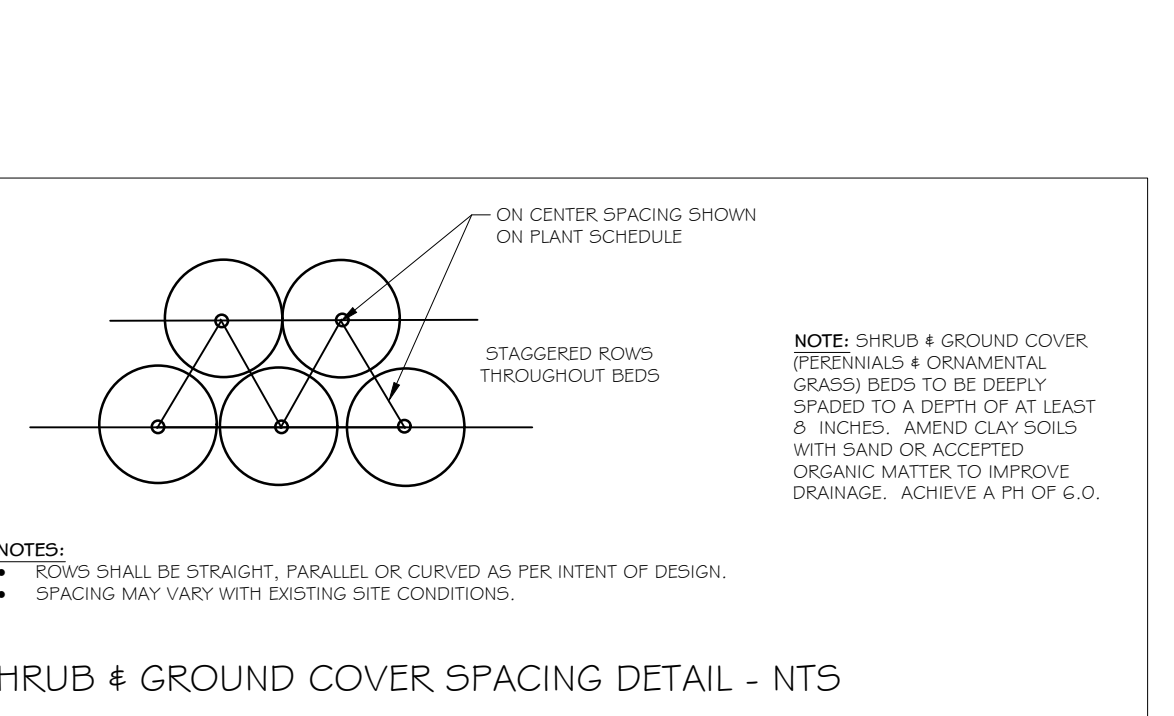
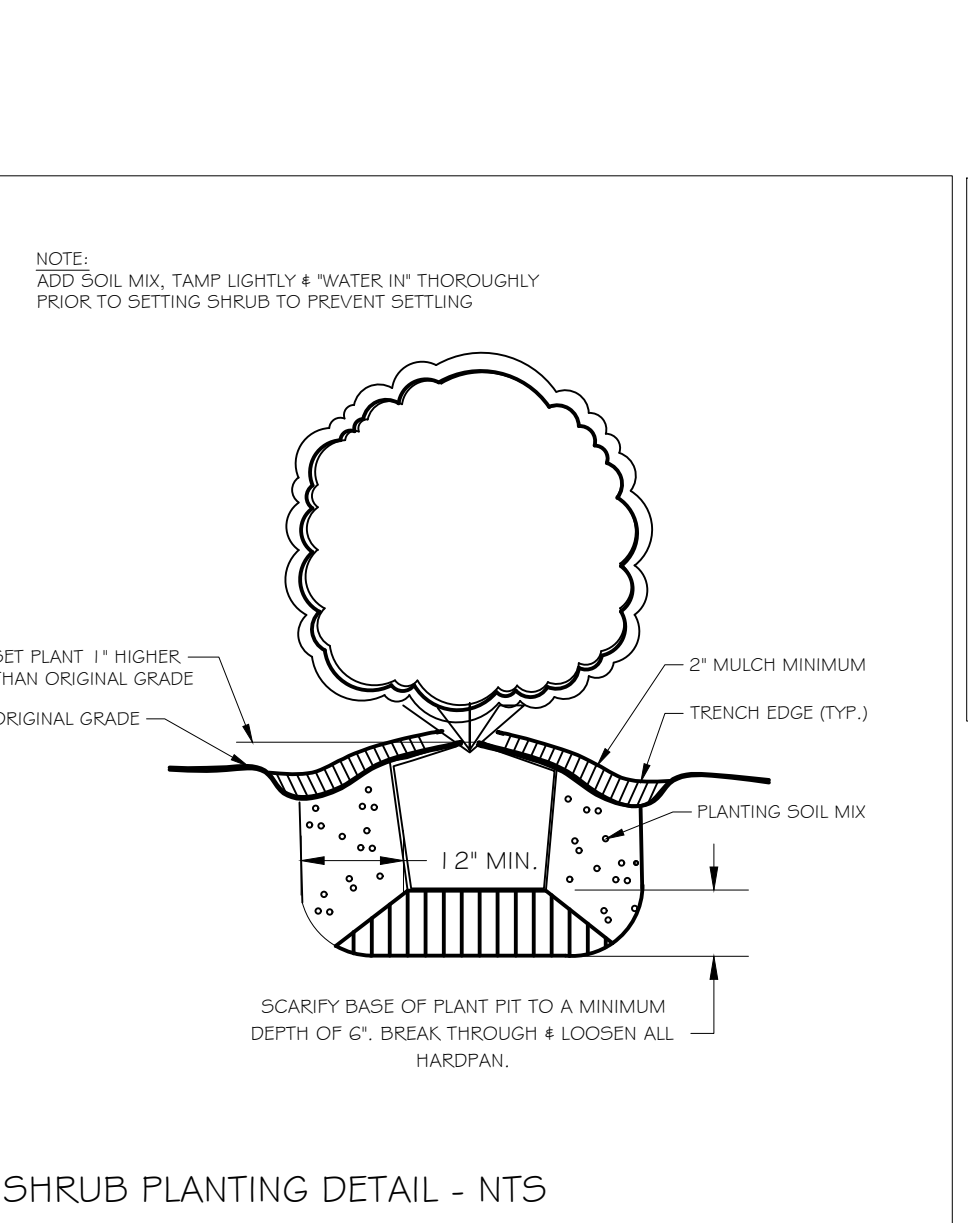
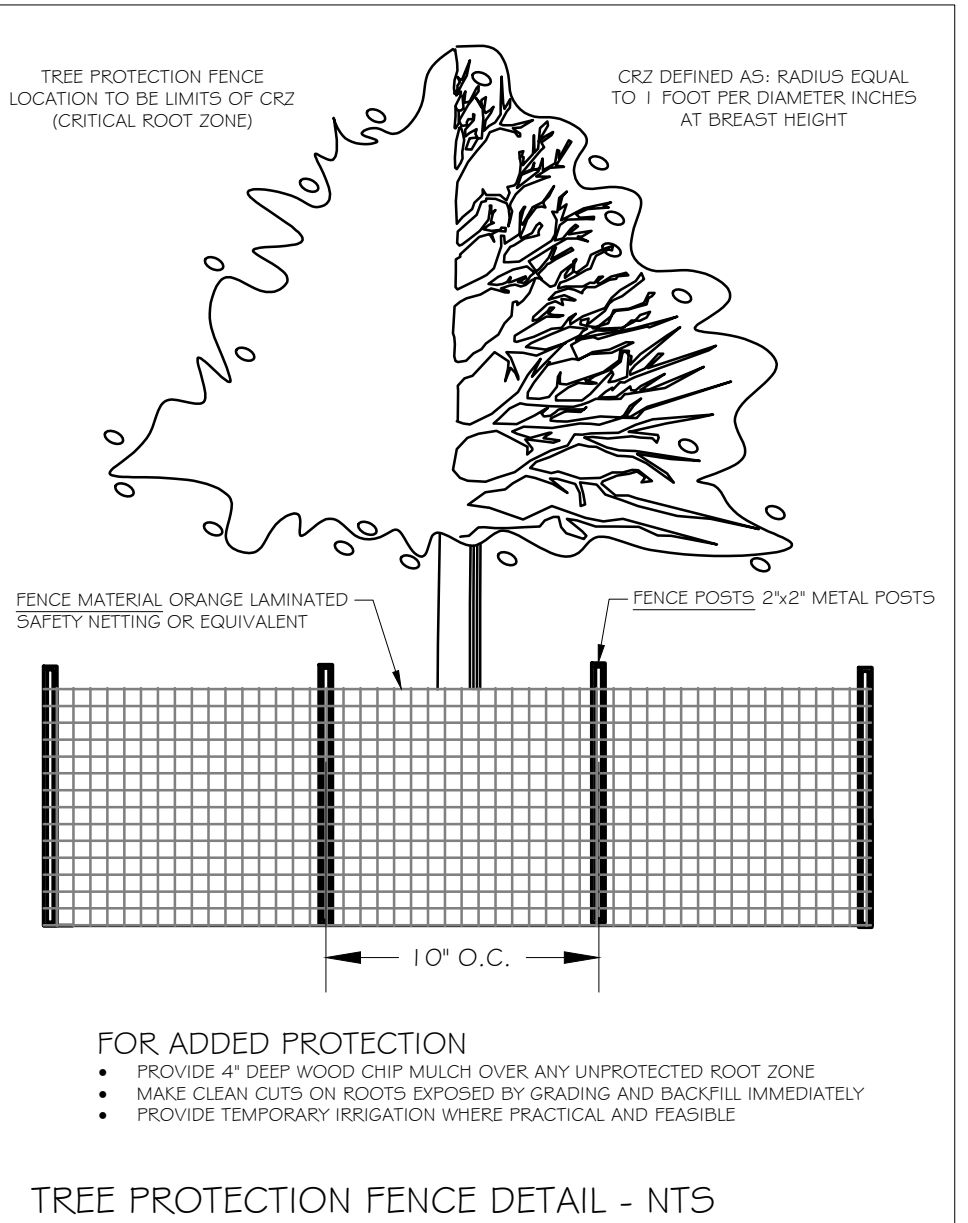
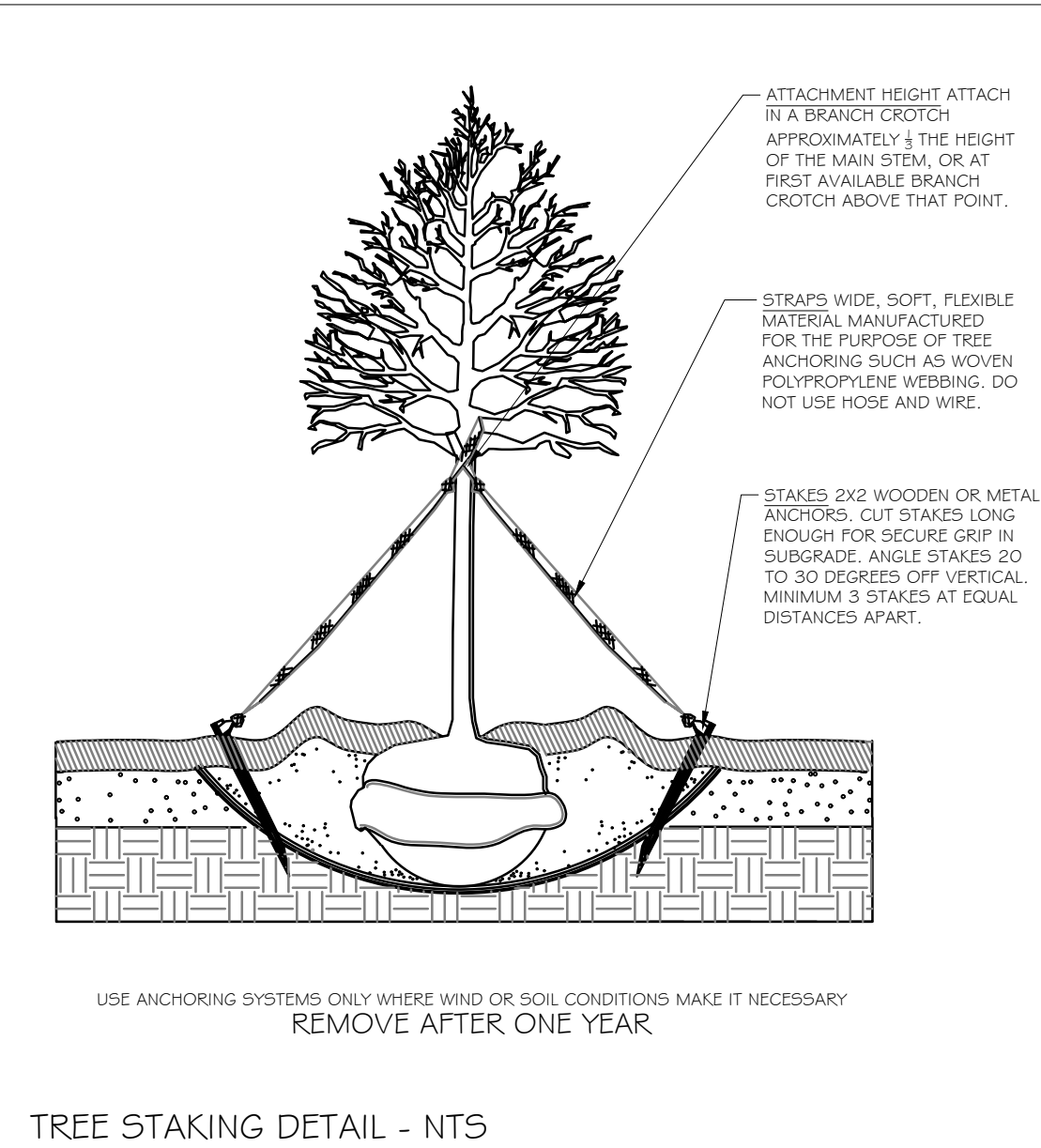
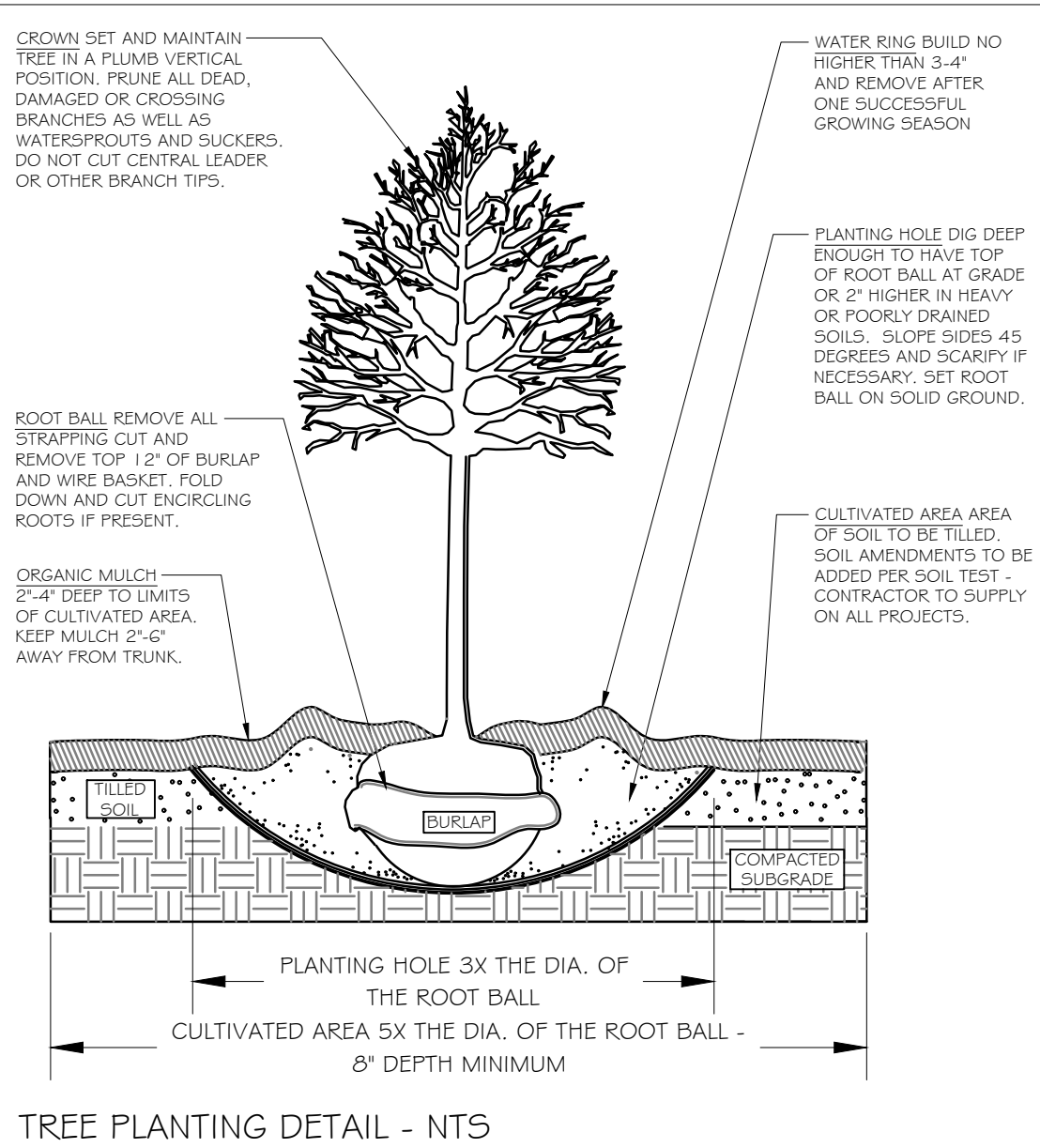
SCALE 1" = 20'


REVISIONS	DATE

DRAWN BY:
JURISDICTION:
DATE:

SHEET TITLE:
TREE PLAN, NOTES, SCHEDULE, & DETAILS

SHEET NUMBER:
T.1

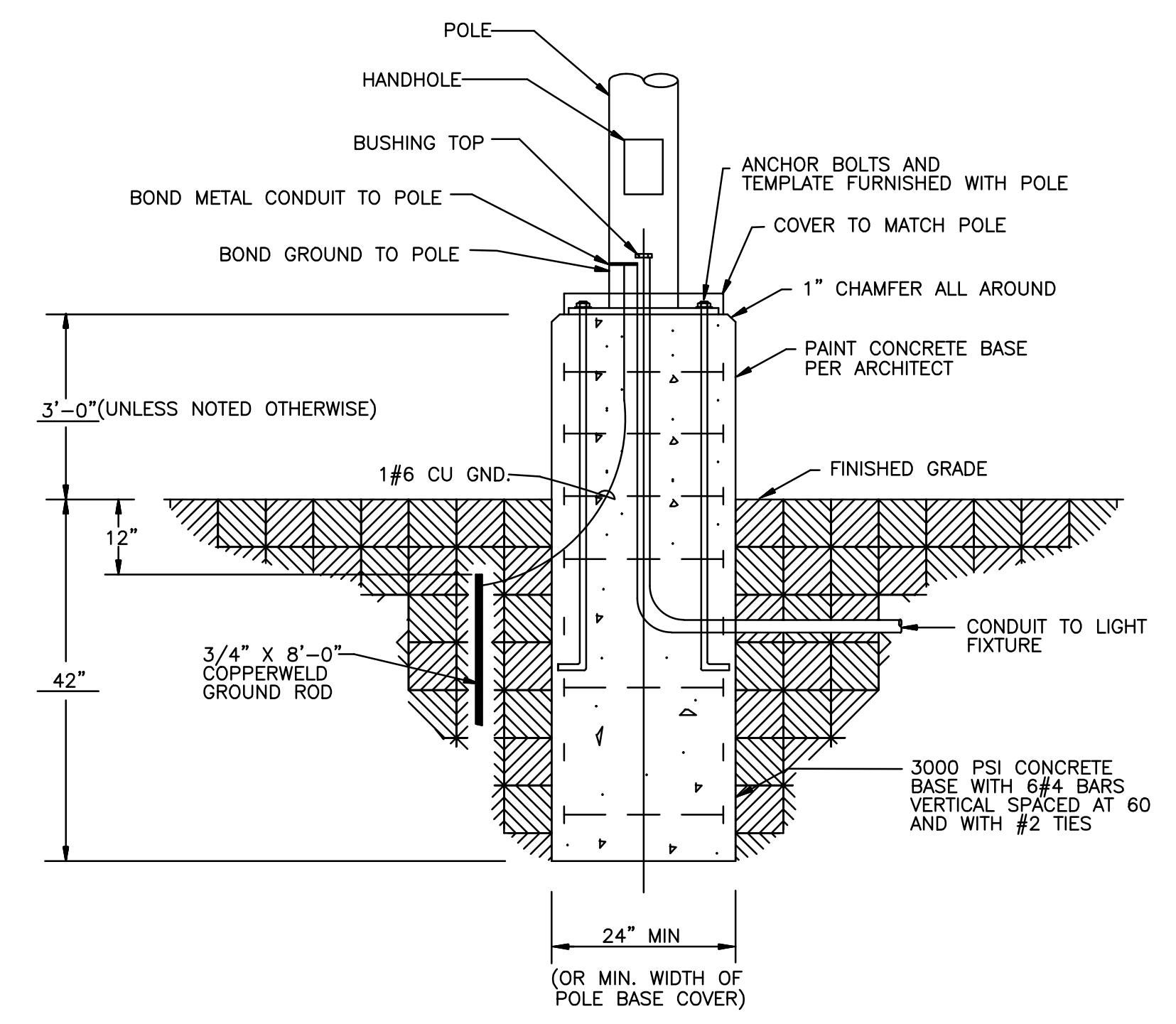


 Know what's below.
Call before you dig.
Dial 811
Or Call 800-282-7411

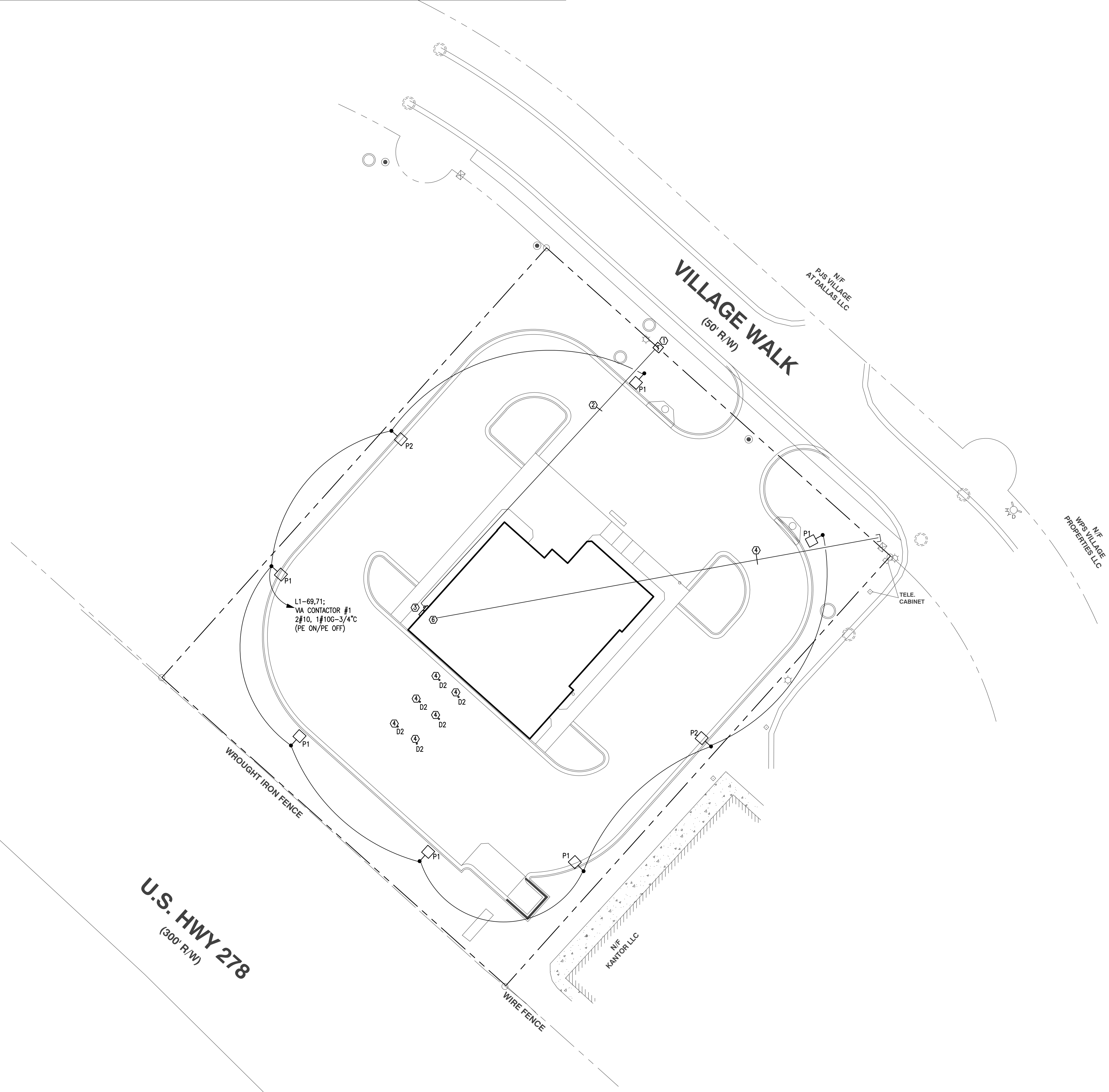
- KEYNOTES:**
- ① APPROXIMATE LOCATION OF EXISTING PAD MOUNTED TRANSFORMER. COORDINATE EXACT LOCATION WITH CIVIL/LOCAL UTILITY COMPANY PRIOR TO ROUGH-IN.
 - ② SECONDARY CONDUIT AND WIRING PER POWER RISER DIAGRAM, 1/E001.
 - ③ APPROXIMATE LOCATION OF ELECTRICAL DISCONNECT.
 - ④ PROVIDE (2) 4" AND (1) 2" FOR TELEPHONE/CATV SERVICE. COORDINATE EXACT REQUIREMENTS WITH UTILITIES.
 - ⑤ REFER TO SHEET 1/E300 FOR LIGHTING REQUIREMENTS.
 - ⑥ APPROXIMATE LOCATION OF ELECTRICAL/IT ROOM.

LIGHTING FIXTURE SCHEDULE								
TYPE	DESCRIPTION	MOUNT	VOLTAGE	LAMP QTY	LAMP WATTAGE/TYPE	MANUFACTURER	CATALOG NUMBER	NOTES
P1	SITE POLE LIGHTING; SINGLE HEAD, TYPE 4M DISTRIBUTION WITH HOUSESIDE SHIELD.	25' POLE	208		215.2W LED 4000K	LITHONIA LIGHTING	DSX1 LED P8 40K 70CRI T4M HS	1
P2	SITE POLE LIGHTING; SINGLE HEAD, TYPE 4M DISTRIBUTION	25' POLE	208		123.9W LED 4000K	LITHONIA LIGHTING	DSX1 LED P4 40K 70CRI BLC3 EGS	1

NOTES:
1. REFER TO POLE MOUNTED DETAIL, THIS SHEET



2 POLE BASE DETAIL
E100 NTS



1 SITE - ELECTRICAL PLAN
E100 1" = 20'-0"

WESTSIDE
ENGINEERING
200 Galleria Parkway
Suite 1150
Atlanta, GA 30339
404-965-1287 tel
404-601-9859 fax
eastgate@westside-engineering.com



4255 WADE GREEN RD NW
SUITE 625
KENNESAW, GEORGIA 30144
770.644.9200 Telephone
studio@AEPerspective.com
www.aeperspective.com

THIS DRAWING IS THE PROPERTY OF PERSPECTIVE ENGINEERING, INC. (P.E.). IT SHALL NOT BE REPRODUCED IN WHOLE OR PART WITHOUT THE WRITTEN PERMISSION OF PERSPECTIVE ENGINEERING, INC. (P.E.).

DRAWING ISSUES

DATE	ISSUED FOR CONSTRUCTION
8/04/2023	ISSUED FOR CONSTRUCTION



8/04/2023

**FIRST NATIONAL COMMUNITY BANK
DALLAS BRANCH**
104 VILLAGE WALK
DALLAS GEORGIA, 30132

AE JOB NUMBER:
23004

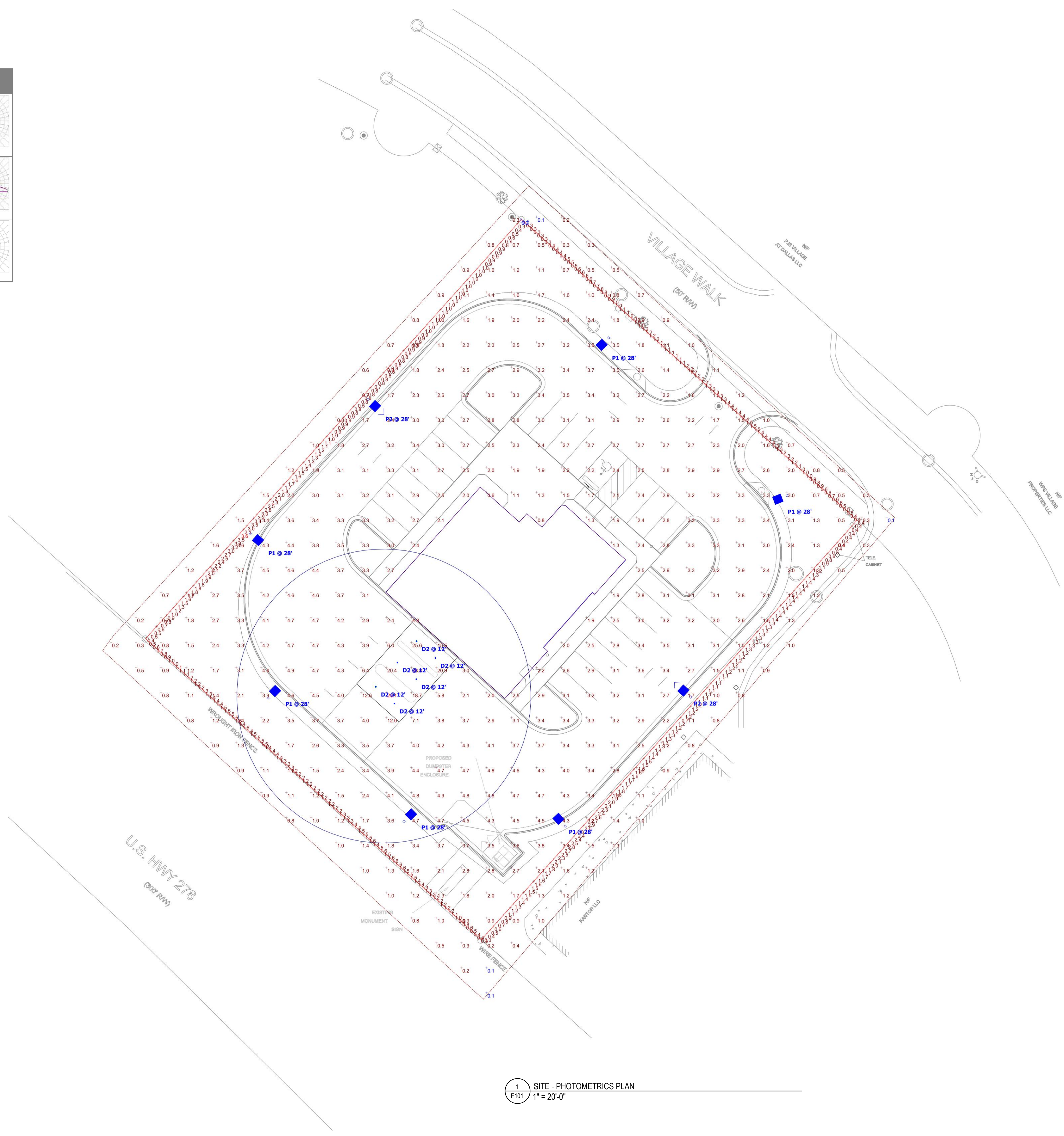
DRAWING TITLE:
**SITE -
ELECTRICAL
PLAN**

SHEET
NUMBER:
E100

ISSUED FOR CONSTRUCTION

Statistics						
Description	Symbol	Avg	Max	Min	Max/Min	Avg/Min
Property Line	+	1.2 fc	3.6 fc	0.2 fc	18.0:1	6.0:1
Calc Zone #2	+	2.8 fc	29.1 fc	0.1 fc	291.0:1	28.0:1

Schedule											
Symbol	Label	Image	QTY	Manufacturer	Catalog	Description	Number Lamps	Lamp Output	LLF	Input Power	Polar Plot
○	D2		6	Lithonia Lighting	LDN6 40/30 106AR LS	6IN LDN, 4000K, 3000LM, CLEAR, SPECULAR REFLECTOR, CR80	1	3185	0.9	34195	
□	P1		6	Lithonia Lighting	DSX1 LED P8 40K 70CRI T4M H2	D-Series Size 1 Area Luminaire P8 Performance Package 4000K CCT 70 CRI Type 4 Medium Houseside Shield	1	24472	0.9	215.7732	 Max: 3305cd
□	P2		2	Lithonia Lighting	DSX1 LED P4 40K 70CRI BLC3 EGS	D-Series Size 1 Area Luminaire P4 Performance Package 4000K CCT 70 CRI Type 3 Extreme Backlight Control External Glare Shield	1	10852	0.9	123.94	 Max: 2076cd Max: 11597cd



THIS DRAWING IS THE PROPERTY OF PERSPECTIVE ENGINEERING, INC. (P.E.). IT SHALL NOT BE REPRODUCED OR PART THEREOF IN ANY MANNER WITHOUT THE WRITTEN CONSENT OF PERSPECTIVE ENGINEERING, INC. (P.E.).

DRAWING ISSUES

NO.	DATE	DESCRIPTION
1	8/04/2023	ISSUED FOR CONSTRUCTION



8/04/2023

**FIRST NATIONAL COMMUNITY BANK
DALLAS BRANCH**
104 VILLAGE WALK
DALLAS GEORGIA, 30132

AE JOB NUMBER:
23004

DRAWING TITLE:
**SITE -
PHOTO-
METRIC PLAN**

SHEET NUMBER:
E101



FRONT VIEW - VILLAGE WALK

FIRST NATIONAL COMMUNITY BANK
104 VILLAGE WALK, DALLAS, GA 30132



SIDE / ENTRY VIEW - (WEST) VILLAGE WALK



FIRST NATIONAL COMMUNITY BANK
104 VILLAGE WALK, DALLAS, GA 30132



SIDE VIEW - (EAST) VILLAGE WALK

FIRST NATIONAL COMMUNITY BANK
104 VILLAGE WALK, DALLAS, GA 30132





REAR DRIVE THRU - HWY 278

FIRST NATIONAL COMMUNITY BANK
104 VILLAGE WALK, DALLAS, GA 30132



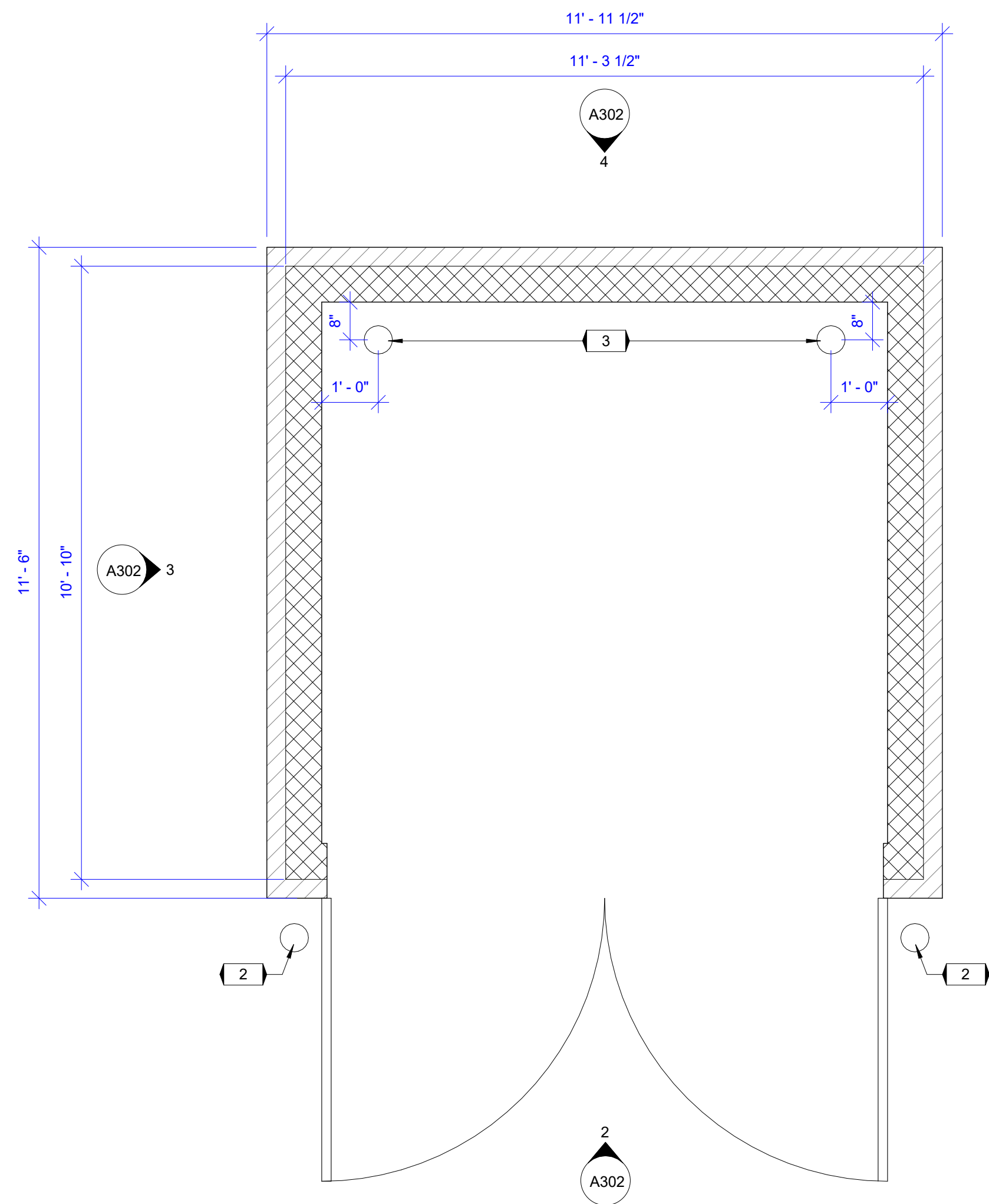
REFER TO CIVIL PLANS FOR DUMPSTER LOCATION.

EXTERIOR ELEVATIONS KEYNOTES

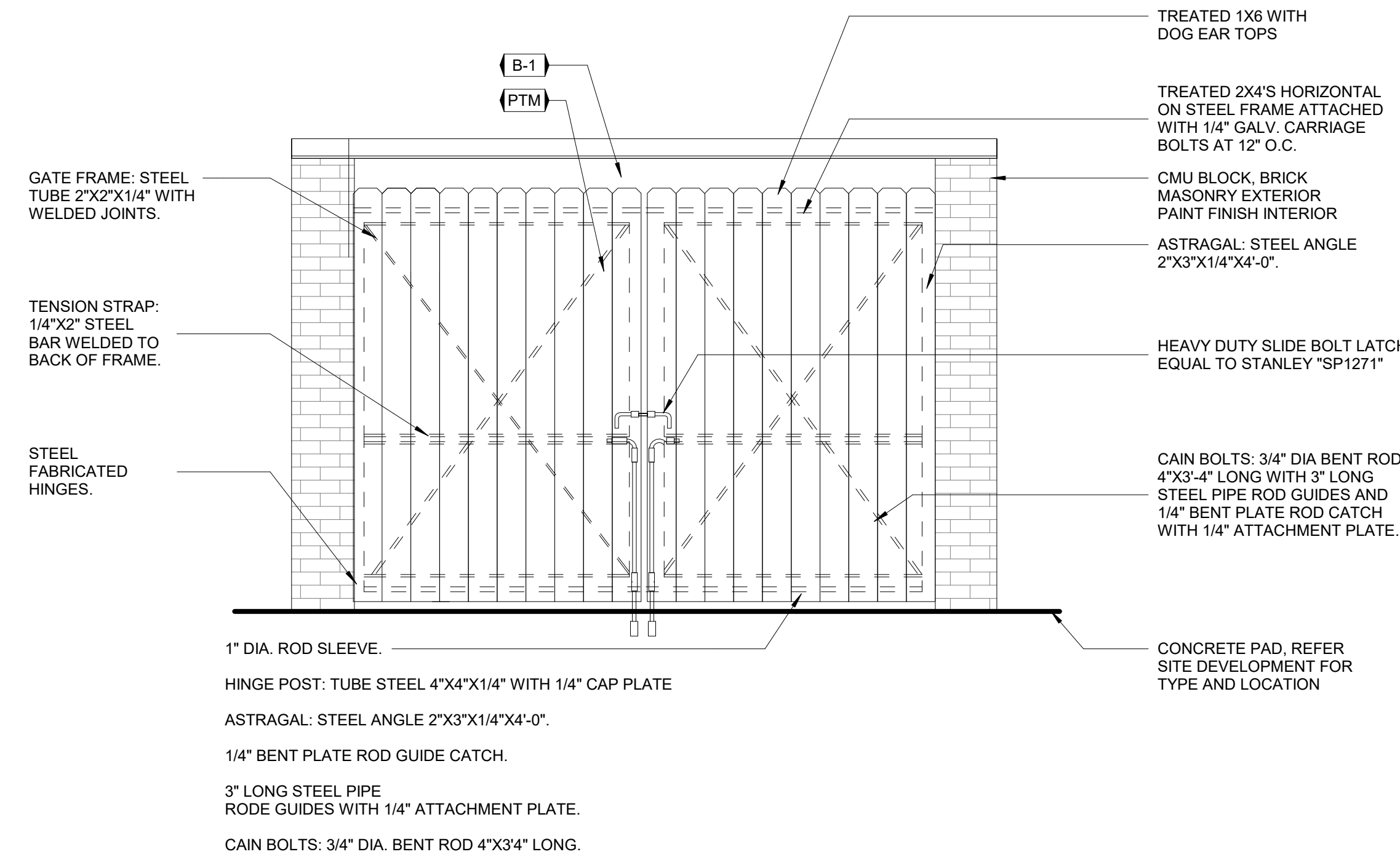
- 1 METAL FRAMED SWING GATE AND FULL HEIGHT BOLLARD POSTS WITH BOLLARD STRAPPED HINGE, TYPICAL.
- 2 METAL FRAMED SWING GATE AND FULL HEIGHT BOLLARD POSTS WITH BOLLARD STRAPPED HINGE, TYPICAL.
- 3 6" STL. PIPE BOLLARD, FILLED WITH CONC., TYPICAL.

MATERIALS LEGEND

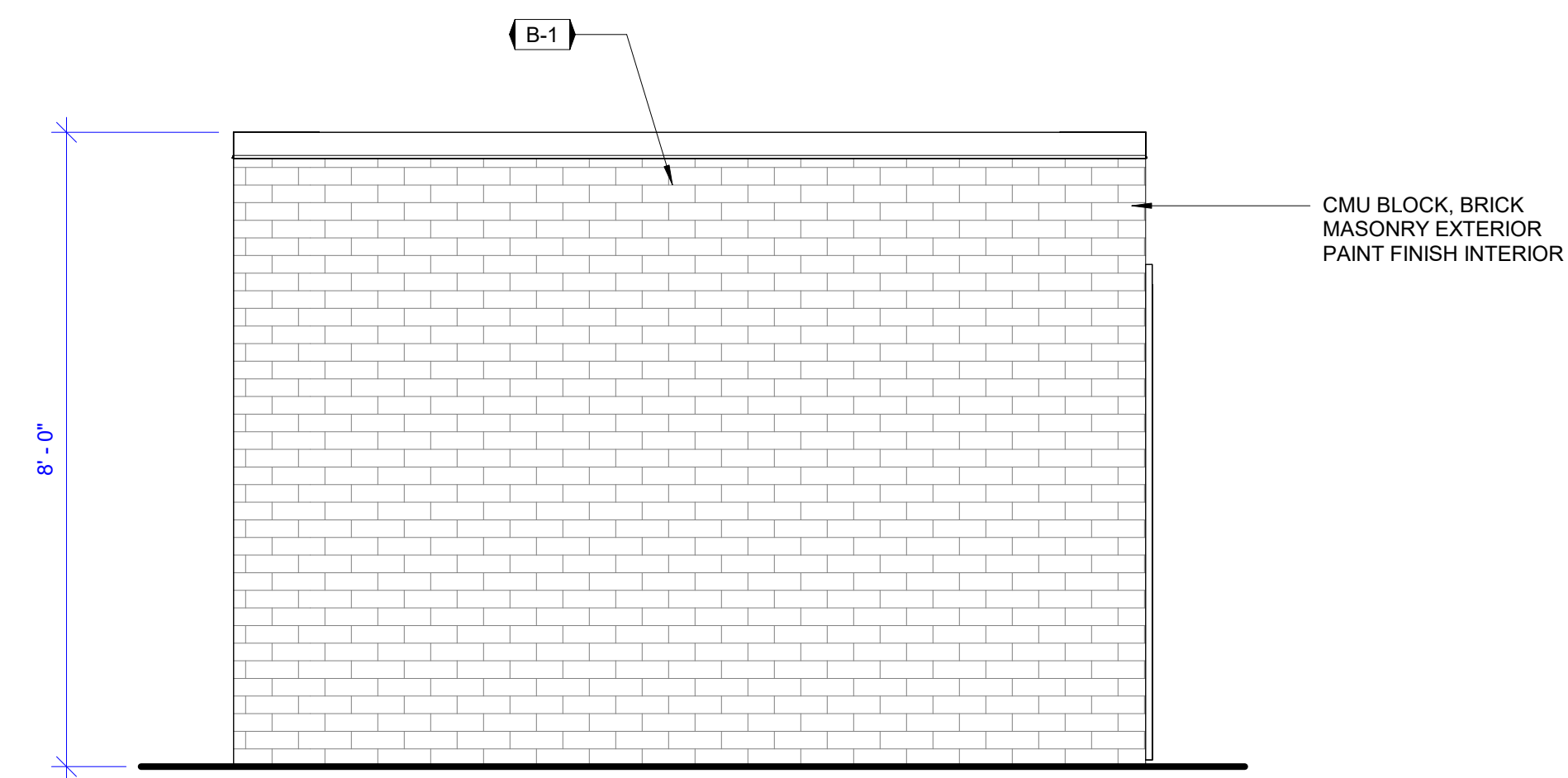
- (CMU) SPLIT FACE CMU, COLOR T.B.D.
- (PTM) PAINTED MASONRY INTERIOR, COLOR T.B.D.



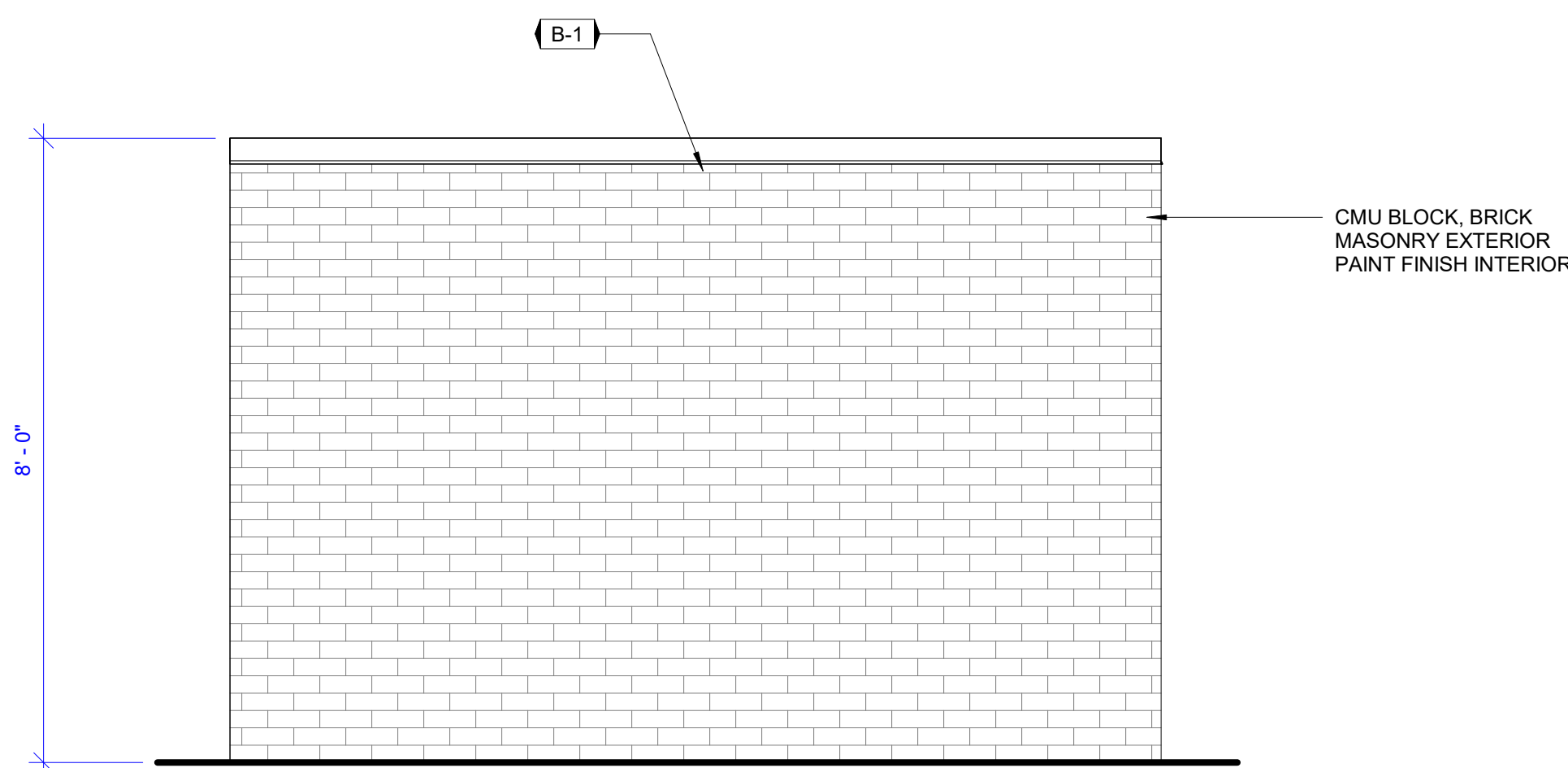
1 ENLARGED PLAN - TRASH ENCLOSURE
A302 1/2" = 1'-0"



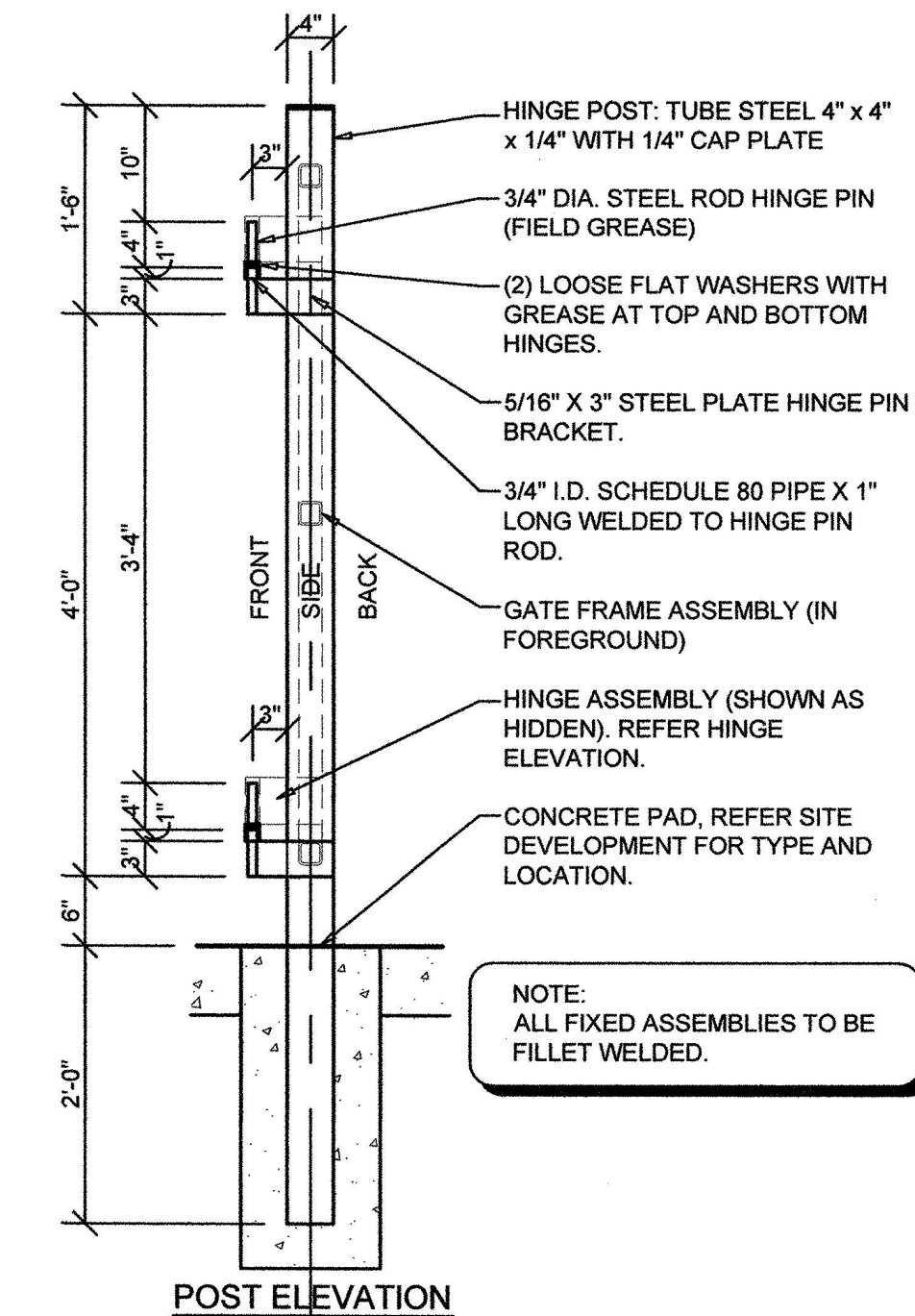
2 EXTERIOR ELEVATION - DUMPSTER
A302 1/2" = 1'-0"



3 EXTERIOR ELEVATION - DUMPSTER
A302 1/2" = 1'-0"

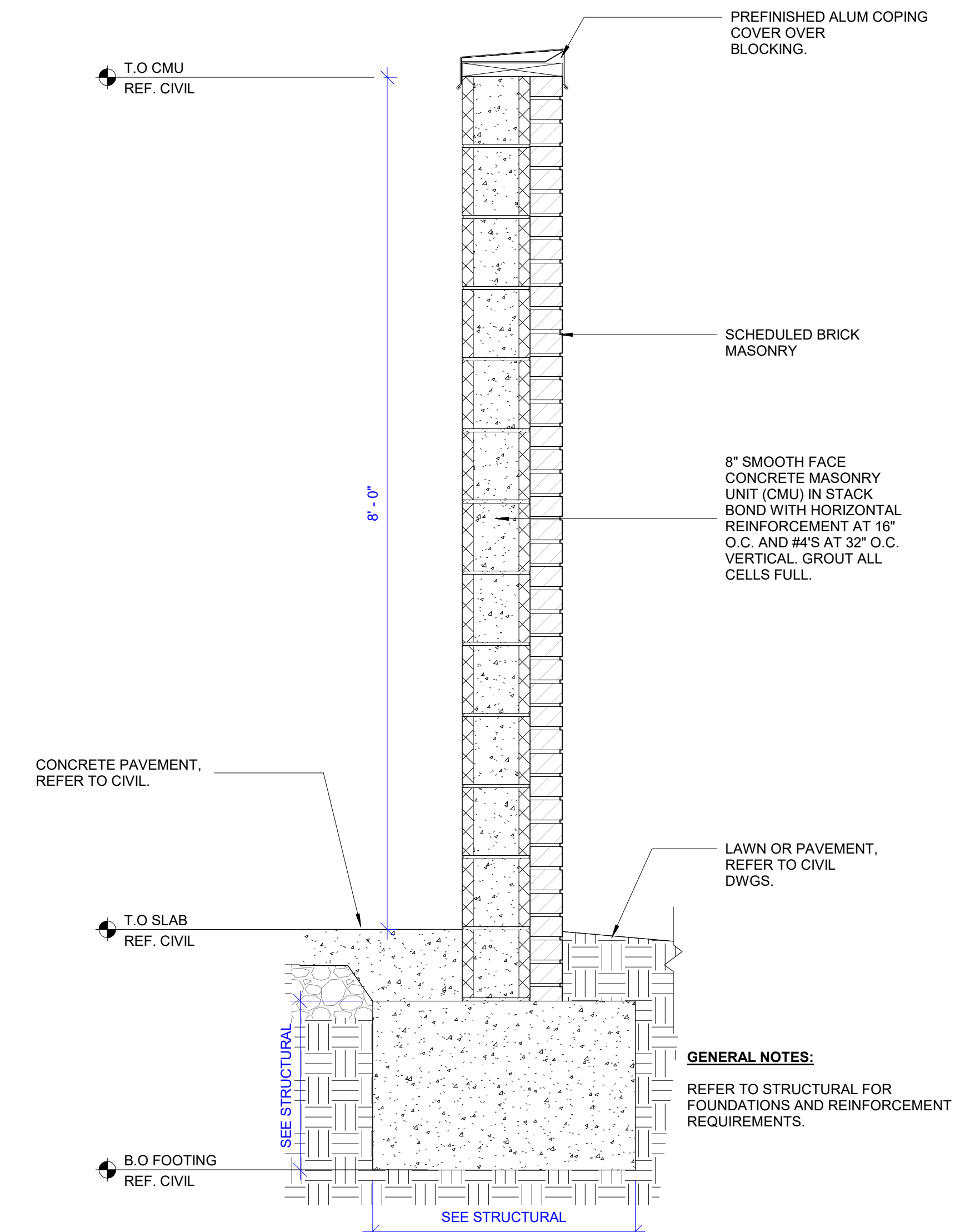


4 EXTERIOR ELEVATION - DUMPSTER
A302 1/2" = 1'-0"



NOTE: ALL FIXED ASSEMBLIES TO BE FILLET WELDED.

5 ENCLOSURE SECTION
A302 12" = 1'-0"



6 ENCLOSURE SECTION
A302 1" = 1'-0"



4255 WADE GREEN RD NW
SUITE 625
KENNESAW, GEORGIA 30144
770.644.9200 Telephone
studio@AEPerspective.com
www.aeperspective.com

THIS DRAWING IS THE PROPERTY OF PERSPECTIVE ENGINEERING, INC. IT IS TO BE USED ONLY FOR THE PROJECT AND SHALL NOT BE REPRODUCED IN WHOLE OR PART. IT SHALL NOT BE USED ON OTHER PROJECTS AND SHALL BE RETURNED UPON REQUEST. COPYRIGHT © 2023 AE PERSPECTIVE. NOT VALID UNLESS SIGNED AND SEALED.

DRAWING ISSUES

NO.	DATE	DESCRIPTION
1	9/13/2023	BID RFI 015



09/01/23

FIRST NATIONAL COMMUNITY BANK
DALLAS BRANCH
104 VILLAGE WALK
DALLAS, GEORGIA, 30132

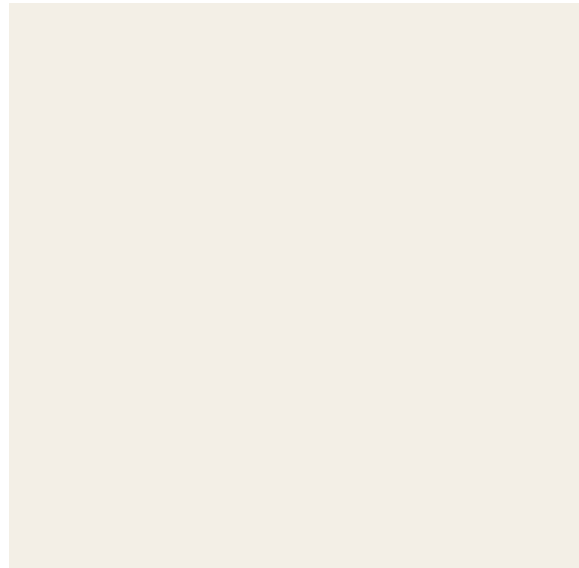
AE JOB NUMBER:
23004

DRAWING TITLE:
TRASH ENCLOSURE PLAN, ELEVATIONS, AND SECTIONS

SHEET NUMBER:
A302

ISSUED FOR CONSTRUCTION

MT-1 AND MT-3 (METAL PANEL)

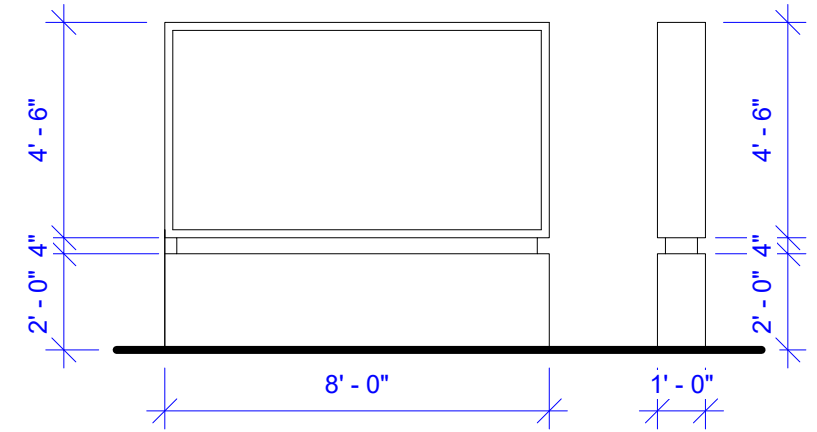


ALPOLIC PE
COLOR: HWH WHITE

EF-1 AND EF-2 (EIFS)



DRYVIT OUTSULATION PLUS
SANDBLAST, COLOR: DOVER SKY



MT-2 (METAL PANEL ACCENT)



ALPOLIC PE
COLOR: SHB BLUE

B-1 (BRICK)



NORTH GEORGIA BRICK
PATTERN: ASHLAND



MONUMENT SIGN

