

# RSA-B-S Series Poles

ROUND STRAIGHT ALUMINUM

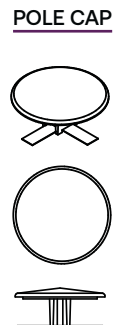
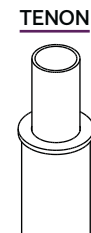
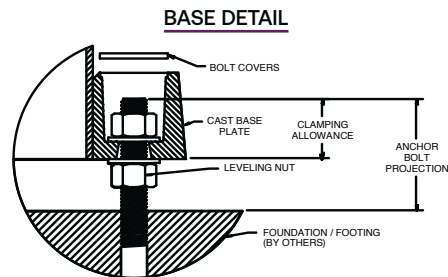
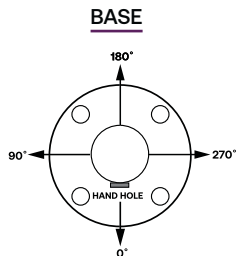
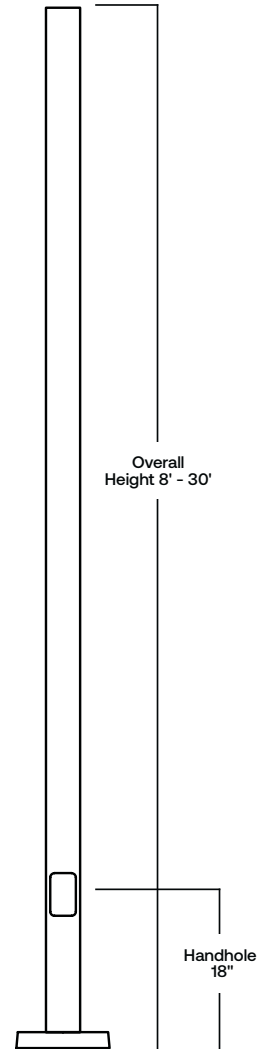
## SPECIFICATIONS

### CONSTRUCTION

- Shaft: One-piece straight aluminum with round cross section; Extruded shafts of 6061-T6 aluminum in 1/8", 3/16", or 1/4" thickness. Base plate of 356 cast aluminum
- Bolt covers: Four (4) individual bolt covers provided, painted to match pole and base finish
- Pole cap: Cap available for side mounted luminaires. Open top or tenons provided for post top mounted luminaires
- Hand hole: Rectangular 3x5 aluminum hand hole frame (2.28" x 4.38" opening); Mounting provisions for grounding lug located behind gasketed cover
- Anchor bolts: Four galvanized anchor bolts provided per pole with minimum yield of 55,000 psi (ASTM F1554). Galvanized hardware with two washers and two nuts per bolt for leveling
  - Anchor bolt part numbers: 3/4 x 30 x 3 — TAB-30-M38
- Durable thermoset polyester powder coat paint finish with nominal 3.0 mil thickness
- Powder paint finish coat available in multiple standard colors; Custom colors available; RAL number preferable

### INSTALLATION

- Lighting installations for side and top mounting of luminaires with effective projected area (EPA) not exceeding maximum allowable loading of the specified pole in its installed geographic location



# RSA-B-S Series Poles

ROUND STRAIGHT ALUMINUM

## ORDERING INFORMATION

Example: RSA-B-S-16-40-A-2L-B3-DBT-VM2

| RSA-B-S   | Height                           | Shaft                            | Thickness  | Mounting   | Drill Pattern  | Finish   | Options   |
|---|----------------------------------|----------------------------------|--|--|--|--|---|
| <b>Series</b>   |                                  |                                  |  |  |  |  |   |
| <b>RSA-B-S</b><br>Round Straight Aluminum Pole Beacon | Reference page 3 Ordering matrix | Reference page 3 Ordering matrix | Reference page 3 Ordering matrix<br>A - .125" Wall<br>B - .188" Wall<br>C - .250" Wall | <b>1</b> Single arm mount<br><b>2</b> Two fixtures at 180°<br><b>2L</b> Two fixtures at 90°<br><b>3T</b> Three fixtures at 90°<br><b>3Y</b> Three fixtures at 120°<br><b>4</b> Four fixtures at 90°<br><b>TA</b> Tenon (2.375" OD)<br><b>TB</b> Tenon (2.875" OD)<br><b>TN3</b> Tenon (3.00" x 3.00")<br><b>TN4</b> Tenon (3.00" x 4.00")<br><b>OT</b> No drilling (includes pole cap) | <b>B1</b> Cruiser, "AM" arm<br><b>B3</b> 2 bolt (2-1/2" spacing), Viper "A" arm<br><b>S2</b> 2 bolt (3-1/2" spacing), Viper "AD" arm<br><b>UDP</b> Universal Drill Pattern | <b>BLT</b> Black Matte Textured<br><b>BLS</b> Black Gloss Smooth<br><b>DBT</b> Dark Bronze Matte Textured<br><b>DBS</b> Dark Bronze Gloss Smooth<br><b>GTT</b> Graphite Matte Textured<br><b>LGT</b> Light Grey Matte Textured<br><b>LGS</b> Light Grey Gloss Smooth<br><b>PSS</b> Platinum Silver Smooth<br><b>WHT</b> White Matte Textured<br><b>WHS</b> White Gloss Smooth<br><b>VGT</b> Verde Green Textured<br><b>Color Option</b><br><b>CC</b> Custom Color <sup>1</sup> | <b>GFI</b> <sup>2</sup> 20 Amp GFCI Receptacle and Cover<br><b>EHH</b> <sup>2</sup> Extra Handhole<br><b>C05</b> <sup>2</sup> .5" Coupling<br><b>C07</b> <sup>2</sup> .75" Coupling<br><b>C20</b> <sup>2</sup> 2" Coupling<br><b>VM2</b> <sup>3</sup> 2nd Mode Vibration Dampener<br><b>LAB</b> Less Anchor Bolts<br><b>UL</b> UL Certified |

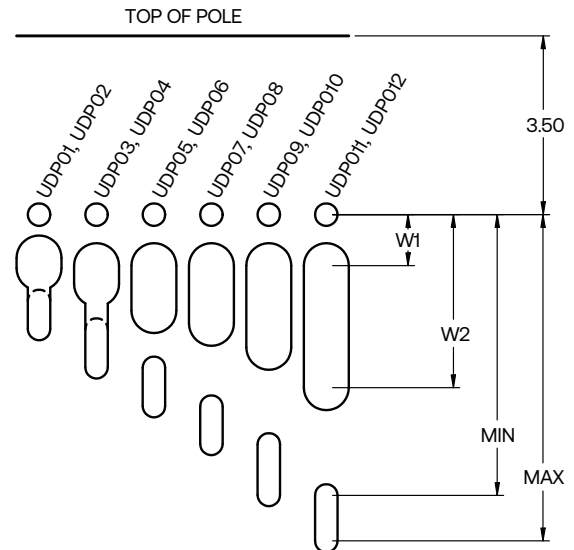
### Accessories (Order Separately)

- VM2S08 Field-installed 2nd mode vibration dampener - 8 ft
- VM2S12 Field-installed 2nd mode vibration dampener - 12 ft
- VM2S16 Field-installed 2nd mode vibration dampener - 16 ft
- VM2S20 Field-installed 2nd mode vibration dampener - 20 ft
- VM2S25 Field-installed 2nd mode vibration dampener - 25 ft

- 1 Custom colors available; RAL number preferable
- 2 Specify option location using logic found on page 3 (Option Orientation).
- 3 There will be a weld witness mark on the side of the pole with the Factory installed VM2

## DRILL PATTERNS

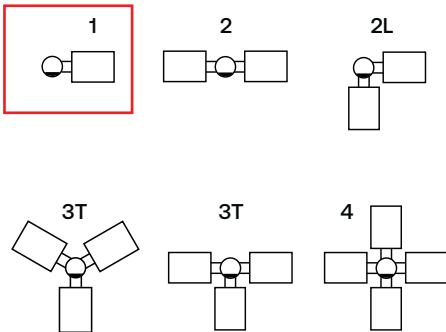
### UNIVERSAL DRILL PATTERN (UDP)



| Two Bolt Mounting with Center Wireway |                             |       |       |       |       |        |
|---------------------------------------|-----------------------------|-------|-------|-------|-------|--------|
| Mounting Hardware                     | Universal Mounting Patterns |       |       |       |       |        |
| 3/8" or less                          | UDP01                       | UDP03 | UDP05 | UDP07 | UDP09 | UDP011 |
| 7/8" to 1/2"                          | UDP02                       | UDP04 | UDP06 | UDP08 | UDP10 | UDP012 |
| "Min" Attachment Dimension            | 1.69                        | 2.25  | 3.00  | 3.76  | 4.50  | 5.50   |
| "Max" Attachment Dimension            | 2.24                        | 2.99  | 3.75  | 4.49  | 5.49  | 6.00   |
| W1 (Wireway min)                      | 0.85                        | 1.00  | 1.00  | 1.00  | 1.00  | 1.00   |
| W2 (Wireway max)                      | 1.05                        | 1.36  | 1.88  | 2.13  | 2.60  | 3.00   |

## MOUNTING ORIENTATION

○ ← Denotes handhole location



# RSA-B-S Series Poles

ROUND STRAIGHT ALUMINUM

## ORDERING INFORMATION (CONTINUED)

| CATALOG NUMBER  | HEIGHT |        | NOMINAL SHAFT DIMENSIONS | WALL THICKNESS | BOLT CIRCLE (SUGGESTED) | BOLT SQUARE | BASE PLATE SIZE        | ANCHOR BOLT SIZE | BOLT PROJECTION | POLE WEIGHT |
|-----------------|--------|--------|--------------------------|----------------|-------------------------|-------------|------------------------|------------------|-----------------|-------------|
|                 | FEET   | METERS |                          |                |                         |             |                        |                  |                 |             |
| RSA-B-S-08-40-A | 8      | 2.4    | 4" Round                 | 0.125          | 6.75"                   | 4.77"       | 9.62" Dia x 1.88" Thk  | 3/4 x 30 x 3     | 2-3/4"          | 19          |
| RSA-B-S-10-40-A | 10     | 3.0    | 4" Round                 | 0.125          | 6.75"                   | 4.77"       | 9.62" Dia x 1.88" Thk  | 3/4 x 30 x 3     | 2-3/4"          | 22          |
| RSA-B-S-12-40-A | 12     | 3.7    | 4" Round                 | 0.125          | 6.75"                   | 4.77"       | 9.62" Dia x 1.88" Thk  | 3/4 x 30 x 3     | 2-3/4"          | 26          |
| RSA-B-S-14-40-A | 14     | 4.3    | 4" Round                 | 0.125          | 6.75"                   | 4.77"       | 9.62" Dia x 1.88" Thk  | 3/4 x 30 x 3     | 2-3/4"          | 30          |
| RSA-B-S-16-40-A | 16     | 4.9    | 4" Round                 | 0.125          | 6.75"                   | 4.77"       | 9.62" Dia x 1.88" Thk  | 3/4 x 30 x 3     | 2-3/4"          | 33          |
| RSA-B-S-12-40-B | 12     | 3.7    | 4" Round                 | 0.188          | 6.75"                   | 4.77"       | 9.62" Dia x 1.88" Thk  | 3/4 x 30 x 3     | 2-3/4"          | 36          |
| RSA-B-S-14-40-B | 14     | 4.3    | 4" Round                 | 0.188          | 6.75"                   | 4.77"       | 9.62" Dia x 1.88" Thk  | 3/4 x 30 x 3     | 2-3/4"          | 42          |
| RSA-B-S-16-40-B | 16     | 4.9    | 4" Round                 | 0.188          | 6.75"                   | 4.77"       | 9.62" Dia x 1.88" Thk  | 3/4 x 30 x 3     | 2-3/4"          | 47          |
| RSA-B-S-18-40-B | 18     | 5.5    | 4" Round                 | 0.188          | 6.75"                   | 4.77"       | 9.62" Dia x 1.88" Thk  | 3/4 x 30 x 3     | 2-3/4"          | 52          |
| RSA-B-S-20-40-B | 20     | 6.1    | 4" Round                 | 0.188          | 6.75"                   | 4.77"       | 9.62" Dia x 1.88" Thk  | 3/4 x 30 x 3     | 2-3/4"          | 57          |
| RSA-B-S-16-40-C | 16     | 4.9    | 4" Round                 | 0.25           | 6.75"                   | 4.77"       | 9.62" Dia x 1.88" Thk  | 3/4 x 30 x 3     | 2-3/4"          | 60          |
| RSA-B-S-18-40-C | 18     | 5.5    | 4" Round                 | 0.25           | 6.75"                   | 4.77"       | 9.62" Dia x 1.88" Thk  | 3/4 x 30 x 3     | 2-3/4"          | 67          |
| RSA-B-S-20-40-C | 20     | 6.1    | 4" Round                 | 0.25           | 6.75"                   | 4.77"       | 9.62" Dia x 1.88" Thk  | 3/4 x 30 x 3     | 2-3/4"          | 74          |
| RSA-B-S-22-40-C | 22     | 6.7    | 4" Round                 | 0.25           | 6.75"                   | 4.77"       | 9.62" Dia x 1.88" Thk  | 3/4 x 30 x 3     | 2-3/4"          | 81          |
| RSA-B-S-24-40-C | 24     | 7.3    | 4" Round                 | 0.25           | 6.75"                   | 4.77"       | 9.62" Dia x 1.88" Thk  | 3/4 x 30 x 3     | 2-3/4"          | 88          |
| RSA-B-S-14-50-B | 14     | 4.3    | 5" Round                 | 0.188          | 7.75"                   | 5.48"       | 10.62" Dia x 1.88" Thk | 3/4 x 30 x 3     | 2-3/4"          | 52          |
| RSA-B-S-16-50-B | 16     | 4.9    | 5" Round                 | 0.188          | 7.75"                   | 5.48"       | 10.62" Dia x 1.88" Thk | 3/4 x 30 x 3     | 2-3/4"          | 59          |
| RSA-B-S-18-50-B | 18     | 5.5    | 5" Round                 | 0.188          | 7.75"                   | 5.48"       | 10.62" Dia x 1.88" Thk | 3/4 x 30 x 3     | 2-3/4"          | 66          |
| RSA-B-S-20-50-B | 20     | 6.1    | 5" Round                 | 0.188          | 7.75"                   | 5.48"       | 10.62" Dia x 1.88" Thk | 3/4 x 30 x 3     | 2-3/4"          | 72          |
| RSA-B-S-22-50-B | 22     | 6.7    | 5" Round                 | 0.188          | 7.75"                   | 5.48"       | 10.62" Dia x 1.88" Thk | 3/4 x 30 x 3     | 2-3/4"          | 79          |
| RSA-B-S-24-50-B | 24     | 7.3    | 5" Round                 | 0.188          | 7.75"                   | 5.48"       | 10.62" Dia x 1.88" Thk | 3/4 x 30 x 3     | 2-3/4"          | 86          |
| RSA-B-S-25-50-B | 25     | 7.6    | 5" Round                 | 0.188          | 7.75"                   | 5.48"       | 10.62" Dia x 1.88" Thk | 3/4 x 30 x 3     | 2-3/4"          | 111         |
| RSA-B-S-14-50-C | 14     | 4.3    | 5" Round                 | 0.25           | 7.75"                   | 5.48"       | 10.62" Dia x 1.88" Thk | 3/4 x 30 x 3     | 2-3/4"          | 67          |
| RSA-B-S-16-50-C | 16     | 4.9    | 5" Round                 | 0.25           | 7.75"                   | 5.48"       | 10.62" Dia x 1.88" Thk | 3/4 x 30 x 3     | 2-3/4"          | 76          |
| RSA-B-S-18-50-C | 18     | 5.5    | 5" Round                 | 0.25           | 7.75"                   | 5.48"       | 10.62" Dia x 1.88" Thk | 3/4 x 30 x 3     | 2-3/4"          | 84          |
| RSA-B-S-20-50-C | 20     | 6.1    | 5" Round                 | 0.25           | 7.75"                   | 5.48"       | 10.62" Dia x 1.88" Thk | 3/4 x 30 x 3     | 2-3/4"          | 93          |
| RSA-B-S-22-50-C | 22     | 6.7    | 5" Round                 | 0.25           | 7.75"                   | 5.48"       | 10.62" Dia x 1.88" Thk | 3/4 x 30 x 3     | 2-3/4"          | 102         |
| RSA-B-S-24-50-C | 24     | 7.3    | 5" Round                 | 0.25           | 7.75"                   | 5.48"       | 10.62" Dia x 1.88" Thk | 3/4 x 30 x 3     | 2-3/4"          | 111         |
| RSA-B-S-25-50-C | 25     | 7.6    | 5" Round                 | 0.25           | 7.75"                   | 5.48"       | 10.62" Dia x 1.88" Thk | 3/4 x 30 x 3     | 2-3/4"          | 116         |
| RSA-B-S-14-60-A | 14     | 4.3    | 6" Round                 | 0.125          | 8.75"                   | 6.19"       | 11.62" Dia x 1.88" Thk | 3/4 x 30 x 3     | 2-3/4"          | 43          |
| RSA-B-S-16-60-A | 16     | 4.9    | 6" Round                 | 0.125          | 8.75"                   | 6.19"       | 11.62" Dia x 1.88" Thk | 3/4 x 30 x 3     | 2-3/4"          | 49          |
| RSA-B-S-18-60-A | 18     | 5.5    | 6" Round                 | 0.125          | 8.75"                   | 6.19"       | 11.62" Dia x 1.88" Thk | 3/4 x 30 x 3     | 2-3/4"          | 54          |
| RSA-B-S-20-60-A | 20     | 6.1    | 6" Round                 | 0.125          | 8.75"                   | 6.19"       | 11.62" Dia x 1.88" Thk | 3/4 x 30 x 3     | 2-3/4"          | 60          |
| RSA-B-S-22-60-A | 22     | 6.7    | 6" Round                 | 0.125          | 8.75"                   | 6.19"       | 11.62" Dia x 1.88" Thk | 3/4 x 30 x 3     | 2-3/4"          | 65          |
| RSA-B-S-24-60-A | 24     | 7.3    | 6" Round                 | 0.125          | 8.75"                   | 6.19"       | 11.62" Dia x 1.88" Thk | 3/4 x 30 x 3     | 2-3/4"          | 71          |
| RSA-B-S-25-60-A | 25     | 7.6    | 6" Round                 | 0.125          | 8.75"                   | 6.19"       | 11.62" Dia x 1.88" Thk | 3/4 x 30 x 3     | 2-3/4"          | 91          |
| RSA-B-S-14-60-C | 14     | 4.3    | 6" Round                 | 0.25           | 8.75"                   | 6.19"       | 11.62" Dia x 1.88" Thk | 3/4 x 30 x 3     | 2-3/4"          | 80          |
| RSA-B-S-16-60-C | 16     | 4.9    | 6" Round                 | 0.25           | 8.75"                   | 6.19"       | 11.62" Dia x 1.88" Thk | 3/4 x 30 x 3     | 2-3/4"          | 90          |
| RSA-B-S-18-60-C | 18     | 5.5    | 6" Round                 | 0.25           | 8.75"                   | 6.19"       | 11.62" Dia x 1.88" Thk | 3/4 x 30 x 3     | 2-3/4"          | 101         |
| RSA-B-S-20-60-C | 20     | 6.1    | 6" Round                 | 0.25           | 8.75"                   | 6.19"       | 11.62" Dia x 1.88" Thk | 3/4 x 30 x 3     | 2-3/4"          | 112         |
| RSA-B-S-22-60-C | 22     | 6.7    | 6" Round                 | 0.25           | 8.75"                   | 6.19"       | 11.62" Dia x 1.88" Thk | 3/4 x 30 x 3     | 2-3/4"          | 122         |
| RSA-B-S-24-60-C | 24     | 7.3    | 6" Round                 | 0.25           | 8.75"                   | 6.19"       | 11.62" Dia x 1.88" Thk | 3/4 x 30 x 3     | 2-3/4"          | 133         |
| RSA-B-S-25-60-C | 25     | 7.6    | 6" Round                 | 0.25           | 8.75"                   | 6.19"       | 11.62" Dia x 1.88" Thk | 3/4 x 30 x 3     | 2-3/4"          | 174         |
| RSA-B-S-30-60-C | 30     | 9.1    | 6" Round                 | 0.25           | 8.75"                   | 6.19"       | 11.62" Dia x 1.88" Thk | 3/4 x 30 x 3     | 2-3/4"          | 208         |

- Notes:**
- Factory supplied template must be used when setting anchor bolts. Current will deny any claim for incorrect anchorage placement resulting from failure to use factory supplied template and anchor bolts.
  - For more information about pole vibration and vibration dampeners, please consult factory.
  - Unwrap poles immediately upon receipt to avoid condensation build up and possible corrosion.
  - † There will be a weld witness mark on the side of the pole with the Factory installed VM2.

|   |  |  |  |  |   |
|---|--|--|--|--|---|
| <p><b>EHH</b><br/>Extra handhole</p> <p>Provision for Grounding</p> | <p><b>C05 / C07 / C20</b><br/>Coupling</p> <p>2" - 11.5 NPSC Threads<br/>3/4" - 14 NPSC Threads<br/>1/2" - 14 NPSC Threads</p> | <p><b>VM2<sup>1</sup></b><br/>2nd mode vibration dampener</p> <p>Factory installed, internal dampener designed to alter pole resonance to reduce movement and material fatigue caused by 2nd mode vibration.</p> | <p><b>VM2SXX</b><br/>Field-installed 2nd mode vibration dampener</p> <p>VM2S08 - 8'<br/>VM2S12 - 12'<br/>VM2S16 - 16'<br/>VM2S20 - 20'<br/>VM2S24 - 24'</p> <p>Field installed, internal dampener designed to alter pole resonance to reduce movement and material fatigue caused by 2nd mode vibration.</p> | <p><b>GFI</b><br/>20 Amp GCFI Receptacle &amp; Cover</p> <p>Round Aluminum Pole<br/>Standard hand hole frame<br/>Adapter plate<br/>Gasket<br/>20 AMP GCFI<br/>Wet Locations In-use Cover</p> | <p><b>Option Orientation</b></p> <p>Follow the logic below when ordering location specific options. For each option, include its orientation (in degrees) and its height (in feet).</p> <p><b>Example:</b> Option C05 should be ordered as: RSA-B-S-16-40A-TN3-DOT-C05-0-15 (.5") coupling on the handhole/arm side of pole, 15' up from the pole base) 1" spacing required between option. Consult factory for other configurations.</p> <p>Height of option in feet</p> |
|---|--|--|--|--|---|

# RSA-B-S Series Poles

ROUND STRAIGHT ALUMINUM

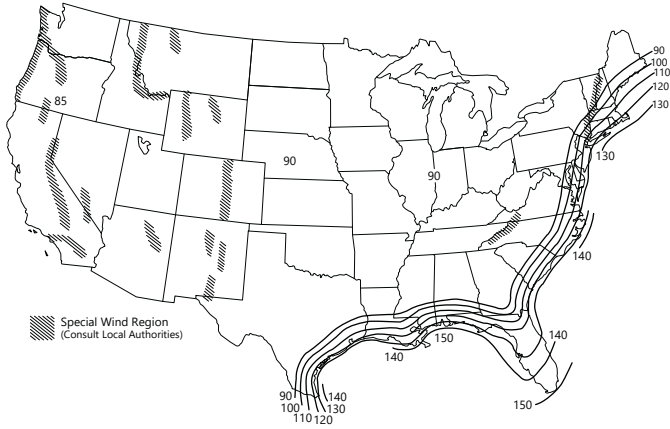
DATE: 8/13/24 | LOCATION: Dallas, GA

TYPE: POLE | PROJECT: C-Store Jimmy Campbell Pkwy

CATALOG #: RSA-B-S-25-50-B

## WIND MAPS

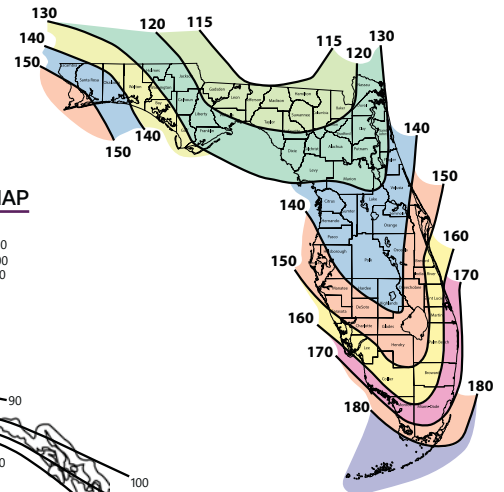
ASCE7-05 WIND MAP



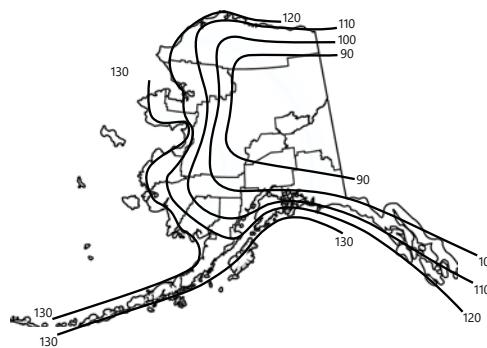
HAWAII – 105 mph  
PUERTO RICO – 145 mph

\*Printed with permission from ASCE

FLORIDA REGION WIND MAP



ALASKA REGION WIND MAP



Florida region wind map above is based upon 3-second gust winds and the 2017 Florida Building Code.

ASCE 7-05 wind map EPA Load Rating – 3 second gust wind speeds (Use for all locations except Florida)

| Catalog Number  | 85   | 90   | 100  | 105  | 110  | 120  | 130  | 140  | 145 | 150 |
|-----------------|------|------|------|------|------|------|------|------|-----|-----|
| RSA-B-S-08-40-A | 12.2 | 10.8 | 8.6  | 7.7  | 6.9  | 5.6  | 4.8  | 4.1  | 3.8 | 3.5 |
| RSA-B-S-10-40-A | 9.0  | 7.9  | 6.2  | 5.5  | 4.8  | 3.9  | 3.2  | 2.7  | 2.5 | 2.3 |
| RSA-B-S-12-40-A | 6.8  | 5.9  | 4.5  | 3.9  | 3.4  | 2.6  | 2.1  | 1.7  | 1.6 | 1.4 |
| RSA-B-S-14-40-A | 5.1  | 4.4  | 3.1  | 2.6  | 2.2  | 1.6  | 1.2  | 0.9  | 0.8 | 0.7 |
| RSA-B-S-16-40-A | 3.8  | 3.2  | 2.1  | 1.6  | 1.3  | 0.7  | 0.5  | NR   | NR  | NR  |
| RSA-B-S-12-40-B | 10.7 | 9.4  | 7.3  | 6.5  | 5.7  | 4.6  | 3.8  | 3.2  | 3.0 | 2.7 |
| RSA-B-S-14-40-B | 8.4  | 7.3  | 5.6  | 4.9  | 4.2  | 3.3  | 2.7  | 2.2  | 2.0 | 1.9 |
| RSA-B-S-16-40-B | 6.6  | 5.7  | 4.2  | 3.6  | 3.0  | 2.2  | 1.8  | 1.4  | 1.3 | 1.1 |
| RSA-B-S-18-40-B | 5.1  | 4.3  | 3.0  | 2.4  | 2.0  | 1.3  | 1.0  | 0.7  | 0.6 | 0.5 |
| RSA-B-S-20-40-B | 3.8  | 3.1  | 2.0  | 1.5  | 1.1  | 0.5  | NR   | NR   | NR  | NR  |
| RSA-B-S-16-40-C | 9.1  | 7.9  | 6.0  | 5.3  | 4.6  | 3.5  | 2.9  | 2.4  | 2.2 | 2.0 |
| RSA-B-S-18-40-C | 7.3  | 6.3  | 4.6  | 3.9  | 3.3  | 2.4  | 1.9  | 1.6  | 1.4 | 1.2 |
| RSA-B-S-20-40-C | 5.7  | 4.8  | 3.4  | 2.8  | 2.3  | 1.5  | 1.1  | 0.8  | 0.7 | 0.6 |
| RSA-B-S-22-40-C | 4.4  | 3.6  | 2.3  | 1.8  | 1.3  | 0.7  | NR   | NR   | NR  | NR  |
| RSA-B-S-24-40-C | 3.3  | 2.6  | 1.4  | 1.0  | 0.5  | NR   | NR   | NR   | NR  | NR  |
| RSA-B-S-14-50-B | 14.6 | 12.8 | 10.2 | 9.2  | 8.4  | 7.0  | 5.8  | 5.0  | 4.6 | 4.3 |
| RSA-B-S-16-50-B | 11.9 | 10.3 | 8.1  | 7.3  | 6.6  | 5.4  | 4.5  | 3.8  | 3.5 | 3.3 |
| RSA-B-S-18-50-B | 9.5  | 8.2  | 6.3  | 5.7  | 5.1  | 4.2  | 3.4  | 2.8  | 2.6 | 2.4 |
| RSA-B-S-20-50-B | 7.5  | 6.4  | 4.8  | 4.3  | 3.8  | 3.0  | 2.4  | 2.0  | 1.8 | 1.6 |
| RSA-B-S-22-50-B | 5.9  | 4.8  | 3.5  | 3.1  | 2.7  | 2.1  | 1.6  | 1.3  | 1.1 | 1.0 |
| RSA-B-S-24-50-B | 4.4  | 3.5  | 2.4  | 2.0  | 1.7  | 1.3  | 0.9  | 0.6  | 0.5 | NR  |
| RSA-B-S-25-50-B | 3.8  | 2.9  | 1.9  | 1.6  | 1.3  | 0.9  | 0.6  | NR   | NR  | NR  |
| RSA-B-S-14-50-C | 19.6 | 17.3 | 13.9 | 12.6 | 11.4 | 9.5  | 8.1  | 6.9  | 6.4 | 5.9 |
| RSA-B-S-16-50-C | 16.2 | 14.2 | 11.3 | 10.2 | 9.3  | 7.7  | 6.5  | 5.5  | 5.1 | 4.7 |
| RSA-B-S-18-50-C | 13.2 | 11.5 | 9.1  | 8.2  | 7.4  | 6.1  | 5.1  | 4.3  | 4.0 | 3.7 |
| RSA-B-S-20-50-C | 10.8 | 9.3  | 7.2  | 6.5  | 5.8  | 4.8  | 3.9  | 3.3  | 3.0 | 2.7 |
| RSA-B-S-22-50-C | 8.7  | 7.4  | 5.6  | 5.0  | 4.5  | 3.6  | 2.9  | 2.4  | 2.2 | 2.0 |
| RSA-B-S-24-50-C | 7.0  | 5.8  | 4.3  | 3.8  | 3.3  | 2.6  | 2.1  | 1.6  | 1.5 | 1.3 |
| RSA-B-S-25-50-C | 6.0  | 4.7  | 3.2  | 2.8  | 2.4  | 1.8  | 1.3  | 1.0  | 0.8 | 0.6 |
| RSA-B-S-14-60-A | 14.7 | 13.1 | 10.5 | 9.5  | 8.6  | 7.2  | 6.0  | 5.1  | 4.8 | 4.4 |
| RSA-B-S-16-60-A | 11.9 | 10.6 | 8.5  | 7.6  | 6.9  | 5.7  | 4.7  | 4.0  | 3.7 | 3.4 |
| RSA-B-S-18-60-A | 9.5  | 8.4  | 6.7  | 6.0  | 5.4  | 4.4  | 3.6  | 3.0  | 2.8 | 2.5 |
| RSA-B-S-20-60-A | 7.5  | 6.5  | 5.1  | 4.6  | 4.1  | 3.3  | 2.7  | 2.2  | 2.0 | 1.8 |
| RSA-B-S-22-60-A | 5.7  | 5.0  | 3.8  | 3.4  | 3.0  | 2.3  | 1.8  | 1.5  | 1.3 | 1.2 |
| RSA-B-S-24-60-A | 4.3  | 3.7  | 2.7  | 2.3  | 2.0  | 1.5  | 1.1  | 0.8  | 0.7 | 0.6 |
| RSA-B-S-25-60-A | 3.6  | 3.1  | 2.2  | 1.9  | 1.6  | 1.1  | 0.8  | 0.5  | NR  | NR  |
| RSA-B-S-14-60-C | 25.0 | 25.0 | 22.2 | 19.0 | 17.2 | 14.3 | 12.1 | 10.3 | 9.6 | 8.9 |
| RSA-B-S-16-60-C | 25.0 | 22.9 | 18.6 | 16.8 | 14.4 | 12.0 | 10.1 | 8.6  | 7.9 | 7.4 |
| RSA-B-S-18-60-C | 21.4 | 19.1 | 15.5 | 14.0 | 12.0 | 9.9  | 8.3  | 7.0  | 6.5 | 6.0 |
| RSA-B-S-20-60-C | 17.9 | 15.9 | 12.8 | 11.6 | 10.5 | 8.1  | 6.8  | 5.7  | 5.2 | 4.8 |
| RSA-B-S-22-60-C | 15.0 | 13.3 | 10.7 | 9.6  | 8.7  | 6.6  | 5.5  | 4.6  | 4.2 | 3.9 |
| RSA-B-S-24-60-C | 12.5 | 11.1 | 8.8  | 7.9  | 7.1  | 5.4  | 4.4  | 3.6  | 3.3 | 3.0 |
| RSA-B-S-25-60-C | 11.4 | 10.1 | 8.0  | 7.2  | 6.5  | 4.8  | 3.9  | 3.2  | 2.9 | 2.6 |
| RSA-B-S-30-60-C | 6.9  | 6.0  | 4.6  | 4.1  | 3.6  | 2.4  | 1.8  | 1.4  | 1.2 | 1.1 |

Florida Building Code 2017 EPA Load Rating – 3 second gust wind speeds (Use for Florida only)

| Catalog Number  | 115  | 120  | 130  | 140  | 150  | 160  | 170 | 180 |
|-----------------|------|------|------|------|------|------|-----|-----|
| RSA-B-S-08-40-A | 8.9  | 8.1  | 6.8  | 5.6  | 4.7  | 4.0  | 4.0 | 3.5 |
| RSA-B-S-10-40-A | 6.4  | 5.8  | 4.7  | 3.8  | 3.1  | 2.5  | 2.8 | 2.4 |
| RSA-B-S-12-40-A | 4.6  | 4.1  | 3.2  | 2.4  | 1.8  | 1.3  | 1.9 | 1.5 |
| RSA-B-S-14-40-A | 3.2  | 2.8  | 2.0  | 1.4  | 0.9  | NR   | NR  | NR  |
| RSA-B-S-16-40-A | 2.1  | 1.7  | 1.0  | 0.5  | NR   | NR   | NR  | NR  |
| RSA-B-S-12-40-B | 7.6  | 6.9  | 5.6  | 4.5  | 3.7  | 2.9  | 3.3 | 2.8 |
| RSA-B-S-14-40-B | 5.8  | 5.1  | 4.0  | 3.1  | 2.4  | 1.8  | 2.4 | 2.0 |
| RSA-B-S-16-40-B | 4.3  | 3.7  | 2.7  | 2.0  | 1.3  | 0.8  | 0.5 | NR  |
| RSA-B-S-18-40-B | 3.0  | 2.5  | 1.7  | 1.0  | NR   | NR   | NR  | NR  |
| RSA-B-S-20-40-B | 1.9  | 1.5  | 0.7  | NR   | NR   | NR   | NR  | NR  |
| RSA-B-S-16-40-C | 6.2  | 5.5  | 4.3  | 3.3  | 2.5  | 1.9  | 1.7 | 1.5 |
| RSA-B-S-18-40-C | 4.6  | 4.0  | 3.0  | 2.1  | 1.5  | 0.9  | 0.7 | 0.5 |
| RSA-B-S-20-40-C | 3.3  | 2.8  | 1.9  | 1.2  | 0.6  | NR   | NR  | NR  |
| RSA-B-S-22-40-C | 2.3  | 1.8  | 1.0  | NR   | NR   | NR   | NR  | NR  |
| RSA-B-S-24-40-C | 1.3  | 0.9  | NR   | NR   | NR   | NR   | NR  | NR  |
| RSA-B-S-14-50-B | 10.4 | 9.3  | 7.5  | 7.5  | 6.3  | 5.3  | 4.5 | 3.8 |
| RSA-B-S-16-50-B | 8.0  | 7.1  | 5.6  | 5.9  | 4.9  | 4.0  | 3.3 | 2.7 |
| RSA-B-S-18-50-B | 6.1  | 5.3  | 3.9  | 3.6  | 3.3  | 3.0  | 2.3 | 1.8 |
| RSA-B-S-20-50-B | 4.4  | 3.7  | 2.9  | 2.8  | 2.7  | 2.1  | 1.5 | 1.1 |
| RSA-B-S-22-50-B | 3.0  | 2.4  | 2.1  | 2.0  | 1.9  | 1.3  | 0.8 | NR  |
| RSA-B-S-24-50-B | 1.8  | 1.3  | 1.2  | 1.1  | NR   | NR   | NR  | NR  |
| RSA-B-S-25-50-B | 1.3  | 0.7  | 1.0  | 0.5  | NR   | NR   | NR  | NR  |
| RSA-B-S-14-50-C | 14.2 | 12.9 | 10.6 | 10.1 | 8.6  | 7.4  | 6.3 | 5.4 |
| RSA-B-S-16-50-C | 11.3 | 10.2 | 8.2  | 7.5  | 6.9  | 5.8  | 4.9 | 4.2 |
| RSA-B-S-18-50-C | 8.9  | 7.9  | 6.2  | 5.8  | 5.4  | 4.5  | 3.7 | 3.1 |
| RSA-B-S-20-50-C | 6.9  | 6.0  | 4.9  | 4.5  | 4.2  | 3.4  | 2.7 | 2.1 |
| RSA-B-S-22-50-C | 5.2  | 4.4  | 3.9  | 3.6  | 3.2  | 2.5  | 1.9 | 1.3 |
| RSA-B-S-24-50-C | 3.7  | 3.0  | 2.8  | 2.5  | 2.3  | 1.7  | 1.1 | 0.7 |
| RSA-B-S-25-50-C | 2.9  | 2.2  | 2.0  | 1.8  | 1.7  | 1.1  | 0.6 | NR  |
| RSA-B-S-14-60-A | 11.5 | 10.5 | 8.6  | 7.2  | 6.0  | 5.0  | 4.2 | 3.5 |
| RSA-B-S-16-60-A | 9.3  | 8.4  | 6.8  | 5.5  | 4.5  | 3.7  | 2.9 | 2.3 |
| RSA-B-S-18-60-A | 7.4  | 6.6  | 5.3  | 4.2  | 3.3  | 2.5  | 1.9 | 1.4 |
| RSA-B-S-20-60-A | 5.9  | 5.2  | 4.0  | 3.0  | 2.2  | 1.6  | 1.0 | 0.6 |
| RSA-B-S-22-60-A | 4.6  | 4.0  | 2.9  | 2.0  | 1.3  | 0.8  | NR  | NR  |
| RSA-B-S-24-60-A | 3.5  | 2.9  | 2.0  | 1.2  | 0.6  | NR   | NR  | NR  |
| RSA-B-S-25-60-A | 3.0  | 2.4  | 1.5  | 0.8  | 0.2  | NR   | NR  | NR  |
| RSA-B-S-14-60-C | 23.7 | 21.7 | 18.3 | 15.6 | 13.3 | 11.5 | 9.9 | 8.6 |
| RSA-B-S-16-60-C | 19.8 | 18.1 | 15.1 | 12.8 | 10.9 | 9.3  | 7.9 | 6.8 |
| RSA-B-S-18-60-C | 16.5 | 15.0 | 12.4 | 10.4 | 8.7  | 7.4  | 6.2 | 5.2 |
| RSA-B-S-20-60-C | 13.8 | 12.5 | 10.3 | 8.5  | 7.0  | 5.8  | 4.8 | 4.0 |
| RSA-B-S-22-60-C | 11.6 | 10.5 | 8.5  | 6.9  | 5.6  | 4.5  | 3.6 | 2.9 |
| RSA-B-S-24-60-C | 9.8  | 8.7  | 7.0  | 5.5  | 4.4  | 3.4  | 2.6 | 1.9 |
| RSA-B-S-25-60-C | 9.0  | 8.0  | 6.3  | 4.9  | 3.8  | 2.9  | 2.1 | 1.5 |
| RSA-B-S-30-60-C | 5.6  | 4.8  | 3.5  | 2.4  | 1.5  | 0.8  | NR  | NR  |

# RSA-B-S Series Poles

ROUND STRAIGHT ALUMINUM

## NOTES

### Wind-speed Website disclaimer:

Current has no connection to the linked website and makes no representations as to its accuracy. While the information presented on this third party website provides a useful starting point for analyzing wind conditions, Current has not verified any of the information on this third party website and assumes no responsibility or liability for its accuracy. The material presented in the windspeed website should not be used or relied upon for any specific application without competent examination and verification of its accuracy, suitability and applicability by engineers or other licensed professionals. Current does not intend that the use of this information replace the sound judgment of such competent professionals, having experience and knowledge in the field of practice, nor to substitute for the standard of care required of such professionals in interpreting and applying the results of the windspeed report provided by this website. Users of the information from this third party website assume all liability arising from such use. Use of the output of these referenced websites do not imply approval by the governing building code bodies responsible for building code approval and interpretation for the building site described by latitude/longitude location in the windspeed report. <http://windspeed.atcouncil.org>

- Allowable EPA, to determine max pole loading weight, multiply allowable EPA by 30 lbs.
- The tables for allowable pole EPA are based on the ASCE 7-05 Wind Map or the Florida Region Wind Map for the 2010 Florida Building Code. The Wind Maps are intended only as a general guide and cannot be used in conjunction with other maps. Always consult local authorities to determine maximum wind velocities, gusting and unique wind conditions for each specific application
- Allowable pole EPA for jobsite wind conditions must be equal to or greater than the total EPA for fixtures, arms, and accessories to be assembled to the pole. Responsibility lies with the specifier for correct pole selection. Installation of poles without luminaires or attachment of any unauthorized accessories to poles is discouraged and shall void the manufacturer's warranty
- Wind speeds and listed EPAs are for ground mounted installations. Poles mounted on structures (such as bridges and buildings) must consider vibration and coefficient of height factors beyond this general guide; Consult local and federal standards
- Wind Induced Vibration brought on by steady, unidirectional winds and other unpredictable aerodynamic forces are not included in wind velocity ratings. Consult Current Lighting's Pole Vibration Application Guide for environmental risk factors and design considerations.
- Extreme Wind Events like, Hurricanes, Typhoons, Cyclones, or Tornadoes may expose poles to flying debris, wind shear or other detrimental effects not included in wind velocity ratings