

Return to **Kenda Johnson**
Paulding County DOT
Watson Government Complex
240 Constitution Blvd
Dallas, GA 30132



Deed Preparation Only-No title Search Performed

**PAULDING COUNTY REMNANT PARCEL QUIT CLAIM DEED
PROPERTY ADJACENT TO INDUSTRIAL BOULEVARD**

STATE OF GEORGIA

COUNTY OF PAULDING

Witnesseth that for and in consideration of the sum of One Dollar (\$1.00), in hand paid, and other good and valuable consideration, the undersigned Grantor, **PAULDING COUNTY**, by and through its Board of Commissioners, a political subdivision of the State of Georgia does hereby abandon unto the **CITY OF DALLAS, GA**, hereinafter referred to as "Grantee," the following:

Paulding County Remnant Parcel located in Land Lots 55 and 90 of the 2nd District, 3rd Section of Paulding County, Georgia, being more particularly described as follows:

SEE ATTACHED EXHIBIT "A"

Whereas Paulding County Quit Claim's all rights and interest in the above described property and by an affirmative vote of the Board of Commissioners, the Grantor does hereby quit-claim and abandon to Grantee all of the existing rights and interest for property identified.

TO HAVE AND TO HOLD the said conveyed premises and any rights Grantor has or may have in and to existing public rights of way are hereby conveyed unto Grantee.

IN WITNESS WHEREOF the said Grantor has set its hand and seal this 14th day of April, 2026.



PAULDING COUNTY, GEORGIA (SEAL)

Grantor

By:

Timothy B. Estes

Timothy B. Estes
Chairman, Paulding County
Board of Commissioners

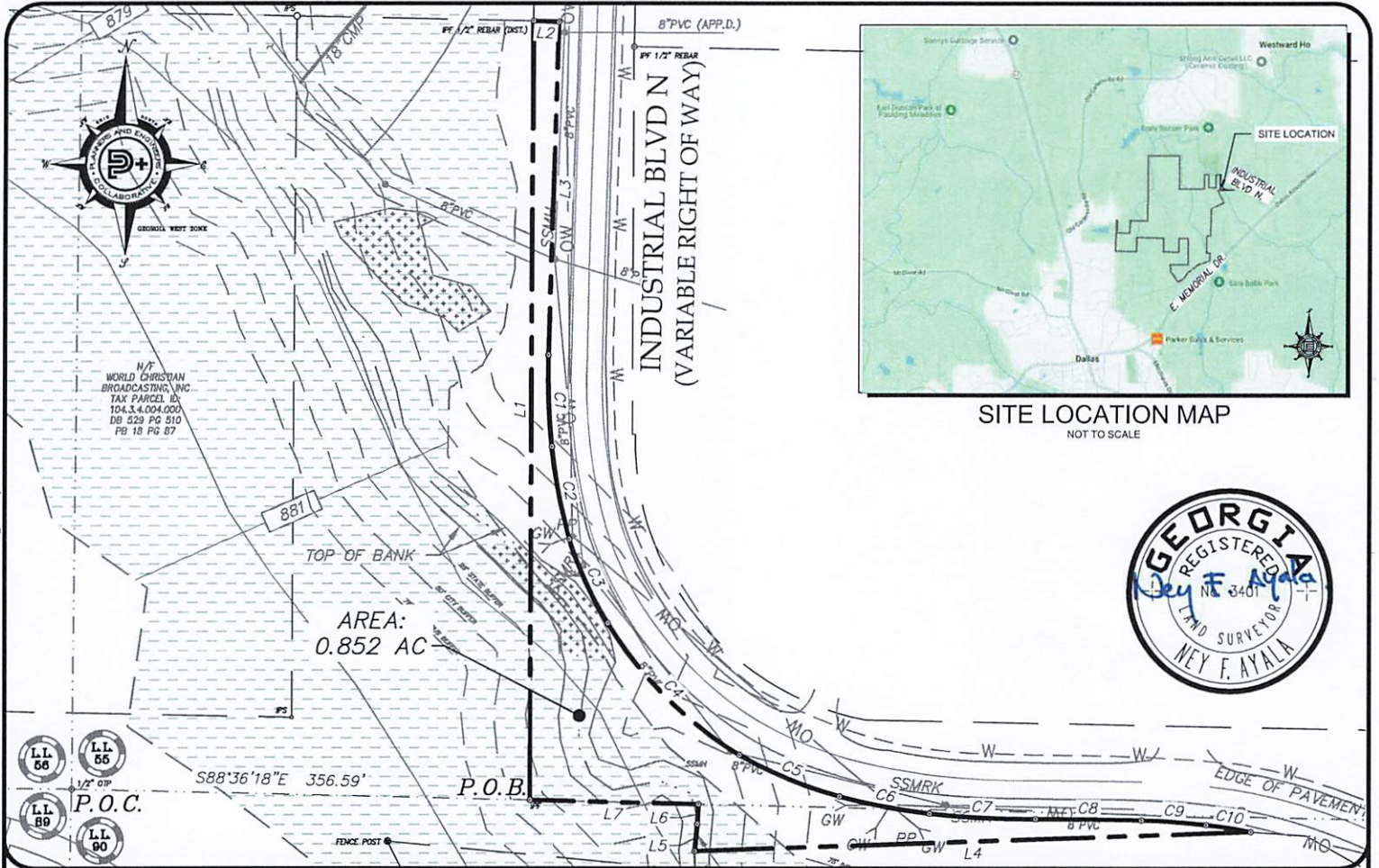
Rebecca Mendell
Witness

Sworn to and subscribed before me
This 14 day of April, 2026

D. Dawn Forrest
Notary Public



J:\2019\1924800\SUBFINAL_PLAT\CAD\19248.004 - ROW PARCEL 2.0.dwg - FAYALA - 3/10/2025 1:39 PM



PEC+ Planners & Engineers Collaborative+
 LAND PLANNING - SURVEYING & CONSTRUCTION - CIVIL ENGINEERING -
 ARBORISTS - LANDSCAPE ARCHITECTURE - WATER RESOURCES

350 RESEARCH COURT PEACHTREE CORNERS, GEORGIA 30092
 (770)451-2741 WWW.PEC.PLUS
 C.O.A.-LSF000004

PAULDING COUNTY REMNANT PARCEL INDUSTRIAL BLVD. NORTH
 FOR:
 WOODLAND CREEK

COUNTY PAULDING
 STATE OF GEORGIA
 CITY OF DALLAS
 LAND LOT(S) 55 & 90
 DISTRICT 2ND, 3RD SECTION

SHEET 1 OF 2
 DRAWN BY: FA
 CHECKED BY: FA
 FILE NO.: 19248.004
 DATE: 03/10/26
 SCALE: 1"=100'

LEGAL DESCRIPTION – RIGHT-OF-WAY DEDICATION EXHIBIT

ALL THAT TRACT OR PARCEL OF LAND LYING AND BEING IN LAND LOTS 55 & 90, OF THE 2ND DISTRICT, 3RD SECTION, CITY OF DALLAS, PAULDING COUNTY, GEORGIA AND BEING MORE PARTICULARLY DESCRIBED AS FOLLOWS:

COMMENCING AT AN 1/2" OPEN TOP PIPE FOUND LOCATED ALONG THE COMMON INTERSECTION OF LAND LOTS 55, 56, 89 & 90; THENCE S88°36'18"E A DISTANCE OF 356.59 FEET TO AN 1/2" IRON PIN FOUND; SAID POINT BEING THE TRUE POINT OF BEGINNING, FROM THE TRUE POINT OF BEGINNING AS THUS ESTABLISHED; THENCE N00°07'19"E A DISTANCE OF 606.27 FEET TO A POINT; THENCE S87°42'19"E A DISTANCE OF 19.68 FEET TO A POINT; THENCE S01°34'29"W A DISTANCE OF 259.68 FEET TO A POINT; THENCE ALONG A CURVE TURNING TO THE LEFT WITH AN ARC LENGTH OF 71.23 FEET, HAVING A RADIUS OF 566.78 FEET, BEING SUBTENDED BY A CHORD BEARING OF S02°14'43"E, AND A CHORD LENGTH OF 71.18 FEET TO A POINT; THENCE ALONG A CURVE TURNING TO THE LEFT WITH AN ARC LENGTH OF 73.25 FEET, HAVING A RADIUS OF 455.55 FEET, BEING SUBTENDED BY A CHORD BEARING OF S10°54'23"E, AND A CHORD LENGTH OF 73.17 FEET TO A POINT; THENCE ALONG A CURVE TURNING TO THE LEFT WITH AN ARC LENGTH OF 72.48 FEET, HAVING A RADIUS OF 311.37 FEET, BEING SUBTENDED BY A CHORD BEARING OF S24°28'34"E, AND A CHORD LENGTH OF 72.32 FEET TO A POINT; THENCE ALONG A CURVE TURNING TO THE LEFT WITH AN ARC LENGTH OF 145.99 FEET, HAVING A RADIUS OF 307.82 FEET, BEING SUBTENDED BY A CHORD BEARING OF S45°16'26"E, AND A CHORD LENGTH OF 144.63 FEET TO A POINT; THENCE ALONG A CURVE TURNING TO THE LEFT WITH AN ARC LENGTH OF 84.38 FEET, HAVING A RADIUS OF 326.94 FEET, BEING SUBTENDED BY A CHORD BEARING OF S67°26'15"E, AND A CHORD LENGTH OF 84.15 FEET TO A POINT; THENCE ALONG A CURVE TURNING TO THE LEFT WITH AN ARC LENGTH OF 71.26 FEET, HAVING A RADIUS OF 517.83 FEET, BEING SUBTENDED BY A CHORD BEARING OF S79°03'46"E, AND A CHORD LENGTH OF 71.20 FEET TO A POINT; THENCE ALONG A CURVE TURNING TO THE LEFT WITH AN ARC LENGTH OF 82.77 FEET, HAVING A RADIUS OF 696.51 FEET, BEING SUBTENDED BY A CHORD BEARING OF S87°09'32"E, AND A CHORD LENGTH OF 82.72 FEET TO A POINT; THENCE WITH A REVERSE CURVE TURNING TO THE RIGHT WITH AN ARC LENGTH OF 82.54 FEET, HAVING A RADIUS OF 3949.78 FEET, BEING SUBTENDED BY A CHORD BEARING OF S89°20'05"E, AND A CHORD LENGTH OF 82.54 FEET TO A POINT; THENCE ALONG A CURVE TURNING TO THE RIGHT WITH AN ARC LENGTH OF 50.25 FEET, HAVING A RADIUS OF 491.45 FEET, BEING SUBTENDED BY A CHORD BEARING OF S85°50'48"E, AND A CHORD LENGTH OF 50.23 FEET TO A POINT; THENCE ALONG A CURVE TURNING TO THE RIGHT WITH AN ARC LENGTH OF 35.56 FEET, HAVING A RADIUS OF 348.03 FEET, BEING SUBTENDED BY A CHORD BEARING OF S81°11'00"E, AND A CHORD LENGTH OF 35.54 FEET TO A POINT; THENCE S88°00'00"W A DISTANCE OF 433.27 FEET TO A POINT; THENCE N05°24'03"E A DISTANCE OF 21.23 FEET TO A POINT; THENCE N03°35'04"E A DISTANCE OF 15.44 FEET TO A POINT; THENCE N88°36'18"W A DISTANCE OF 131.15 FEET TO A 1/2" IRON PIN FOUND AND THE TRUE POINT OF BEGINNING.

SAID TRACT OR PARCEL CONTAINS 0.852 ACRES.

Line Table		
Line #	Length	Direction
L1	606.27	N00°07'19"E
L2	19.68	S87°42'19"E
L3	259.68	S01°34'29"W
L4	433.27	S88°00'00"W
L5	21.23	N05°24'03"E
L6	15.44	N03°35'04"E
L7	131.15	N88°36'18"W

Curve Table				
Curve #	Length	Radius	Chord	Bearing
C1	71.23	566.78	71.18	S02°14'43"E
C2	73.25	455.55	73.17	S10°54'23"E
C3	72.48	311.37	72.32	S24°28'34"E
C4	145.99	307.82	144.63	S45°16'26"E
C5	84.38	326.94	84.15	S67°26'15"E
C6	71.26	517.83	71.20	S79°03'46"E
C7	82.77	696.51	82.72	S87°09'32"E
C8	82.54	3949.78	82.54	S89°20'05"E
C9	50.25	491.45	50.23	S85°50'48"E
C10	35.56	348.03	35.54	S81°11'00"E

J:\2019\1924800\SUBFINAL\PLAT\CAD\19248.00A - ROW.PARCEL 2.0.dwg - F:\yala - 3/10/2026 1:40 PM



Planners & Engineers Collaborative+
 LAND PLANNING - SURVEYING & CONSTRUCTION - CIVIL ENGINEERING -
 ARBORISTS - LANDSCAPE ARCHITECTURE - WATER RESOURCES

350 RESEARCH COURT PEACHTREE CORNERS, GEORGIA 30092
 (770)451-2741 WWW.PEC.PLUS
 C.O.A.-LSF000004

**PAULDING COUNTY REMNANT PARCEL INDUSTRIAL BLVD. NORTH
 FOR:
 WOODLAND CREEK**

SHEET 2 OF 2

COUNTY PAULDING
 STATE OF GEORGIA
 CITY OF DALLAS
 LAND LOT(S) 55 & 90
 DISTRICT 2ND, 3RD SECTION



DRAWN BY: FA
 CHECKED BY: FA
 FILE NO.: 19248.00A
 DATE: 03/10/26
 SCALE: 1"=100'

LEGAL DESCRIPTION – ROW DEDICATION EXHIBIT

ALL THAT TRACT OR PARCEL OF LAND LYING AND BEING IN LAND LOTS 55 & 90, OF THE 2ND DISTRICT, 3RD SECTION, CITY OF DALLAS, PAULDING COUNTY, GEORGIA AND BEING MORE PARTICULARLY DESCRIBED AS FOLLOWS:

COMMENCING AT AN 1/2" OPEN TOP PIPE FOUND LOCATED ALONG THE COMMON INTERSECTION OF LAND LOTS 55, 56, 89 & 90; THENCE S88°36'18"E A DISTANCE OF 356.59 FEET TO AN 1/2" IRON PIN FOUND; SAID POINT BEING THE TRUE POINT OF BEGINNING, FROM THE TRUE POINT OF BEGINNING AS THUS ESTABLISHED; THENCE N00°07'19"E A DISTANCE OF 606.27 FEET TO A POINT; THENCE S87°42'19"E A DISTANCE OF 19.68 FEET TO A POINT; THENCE S01°34'29"W A DISTANCE OF 259.68 FEET TO A POINT; THENCE ALONG A CURVE TURNING TO THE LEFT WITH AN ARC LENGTH OF 71.23 FEET, HAVING A RADIUS OF 566.78 FEET, BEING SUBTENDED BY A CHORD BEARING OF S02°14'43"E, AND A CHORD LENGTH OF 71.18 FEET TO A POINT; THENCE ALONG A CURVE TURNING TO THE LEFT WITH AN ARC LENGTH OF 73.25 FEET, HAVING A RADIUS OF 455.55 FEET, BEING SUBTENDED BY A CHORD BEARING OF S10°54'23"E, AND A CHORD LENGTH OF 73.17 FEET TO A POINT; THENCE ALONG A CURVE TURNING TO THE LEFT WITH AN ARC LENGTH OF 72.48 FEET, HAVING A RADIUS OF 311.37 FEET, BEING SUBTENDED BY A CHORD BEARING OF S24°28'34"E, AND A CHORD LENGTH OF 72.32 FEET TO A POINT; THENCE ALONG A CURVE TURNING TO THE LEFT WITH AN ARC LENGTH OF 145.99 FEET, HAVING A RADIUS OF 307.82 FEET, BEING SUBTENDED BY A CHORD BEARING OF S45°16'26"E, AND A CHORD LENGTH OF 144.63 FEET TO A POINT; THENCE ALONG A CURVE TURNING TO THE LEFT WITH AN ARC LENGTH OF 84.38 FEET, HAVING A RADIUS OF 326.94 FEET, BEING SUBTENDED BY A CHORD BEARING OF S67°26'15"E, AND A CHORD LENGTH OF 84.15 FEET TO A POINT; THENCE ALONG A CURVE TURNING TO THE LEFT WITH AN ARC LENGTH OF 71.26 FEET, HAVING A RADIUS OF 517.83 FEET, BEING SUBTENDED BY A CHORD BEARING OF S79°03'46"E, AND A CHORD LENGTH OF 71.20 FEET TO A POINT; THENCE ALONG A CURVE TURNING TO THE LEFT WITH AN ARC LENGTH OF 82.77 FEET, HAVING A RADIUS OF 696.51 FEET, BEING SUBTENDED BY A CHORD BEARING OF S87°09'32"E, AND A CHORD LENGTH OF 82.72 FEET TO A POINT; THENCE WITH A REVERSE CURVE TURNING TO THE RIGHT WITH AN ARC LENGTH OF 82.54 FEET, HAVING A RADIUS OF 3949.78 FEET, BEING SUBTENDED BY A CHORD BEARING OF S89°20'05"E, AND A CHORD LENGTH OF 82.54 FEET TO A POINT; THENCE ALONG A CURVE TURNING TO THE RIGHT WITH AN ARC LENGTH OF 50.25 FEET, HAVING A RADIUS OF 491.45 FEET, BEING SUBTENDED BY A CHORD BEARING OF S85°50'48"E, AND A CHORD LENGTH OF 50.23 FEET TO A POINT; THENCE ALONG A CURVE TURNING TO THE RIGHT WITH AN ARC LENGTH OF 35.56 FEET, HAVING A RADIUS OF 348.03 FEET, BEING SUBTENDED BY A CHORD BEARING OF S81°11'00"E, AND A CHORD LENGTH OF 35.54 FEET TO A POINT; THENCE S88°00'00"W A DISTANCE OF 433.27 FEET TO A POINT; THENCE N05°24'03"E A DISTANCE OF 21.23 FEET TO A POINT; THENCE N03°35'04"E A DISTANCE OF 15.44 FEET TO A POINT; THENCE N88°36'18"W A DISTANCE OF 131.15 FEET TO A 1/2" IRON PIN FOUND AND THE TRUE POINT OF BEGINNING.

SAID TRACT OR PARCEL CONTAINS 0.852 ACRES.

