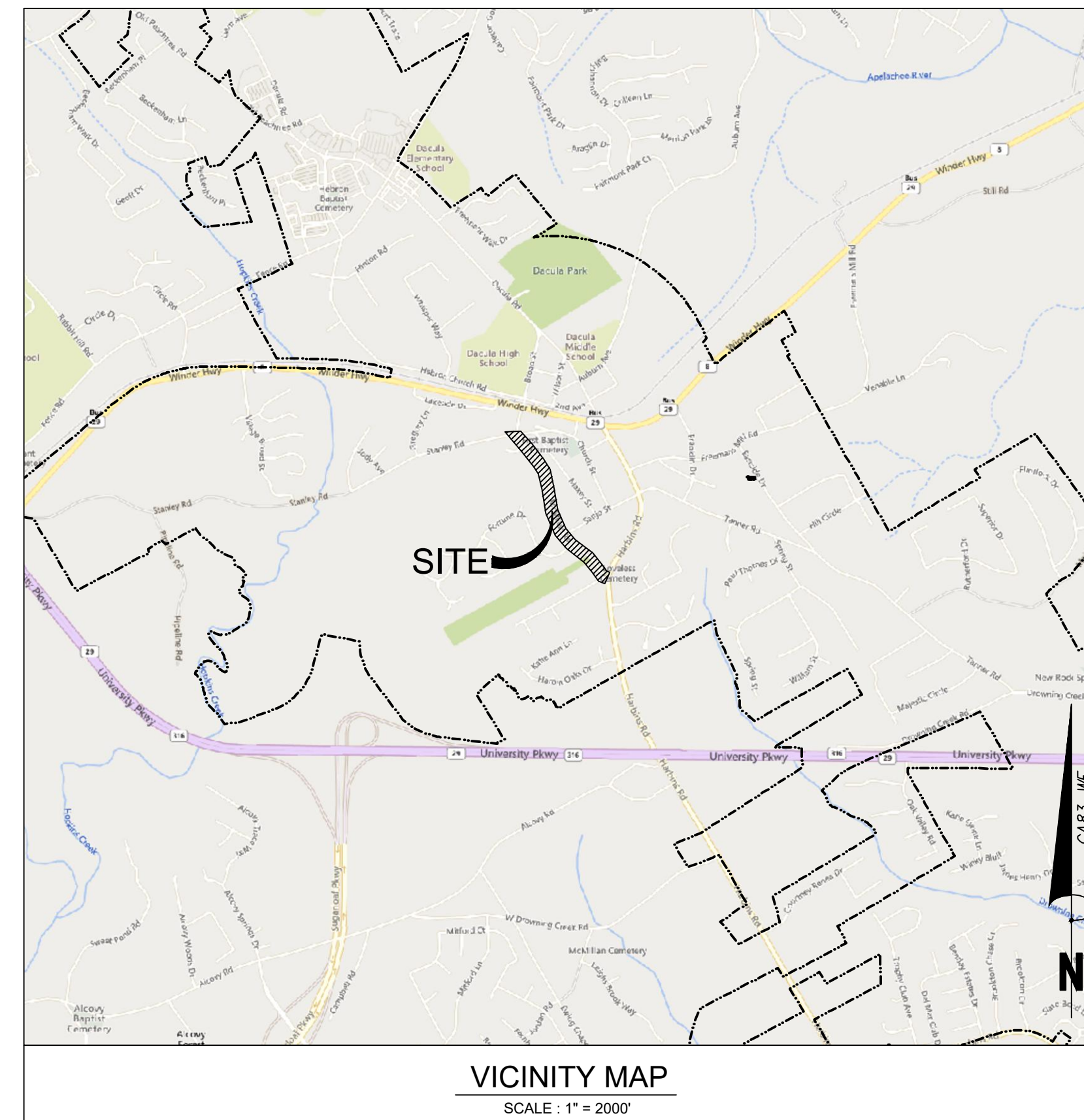
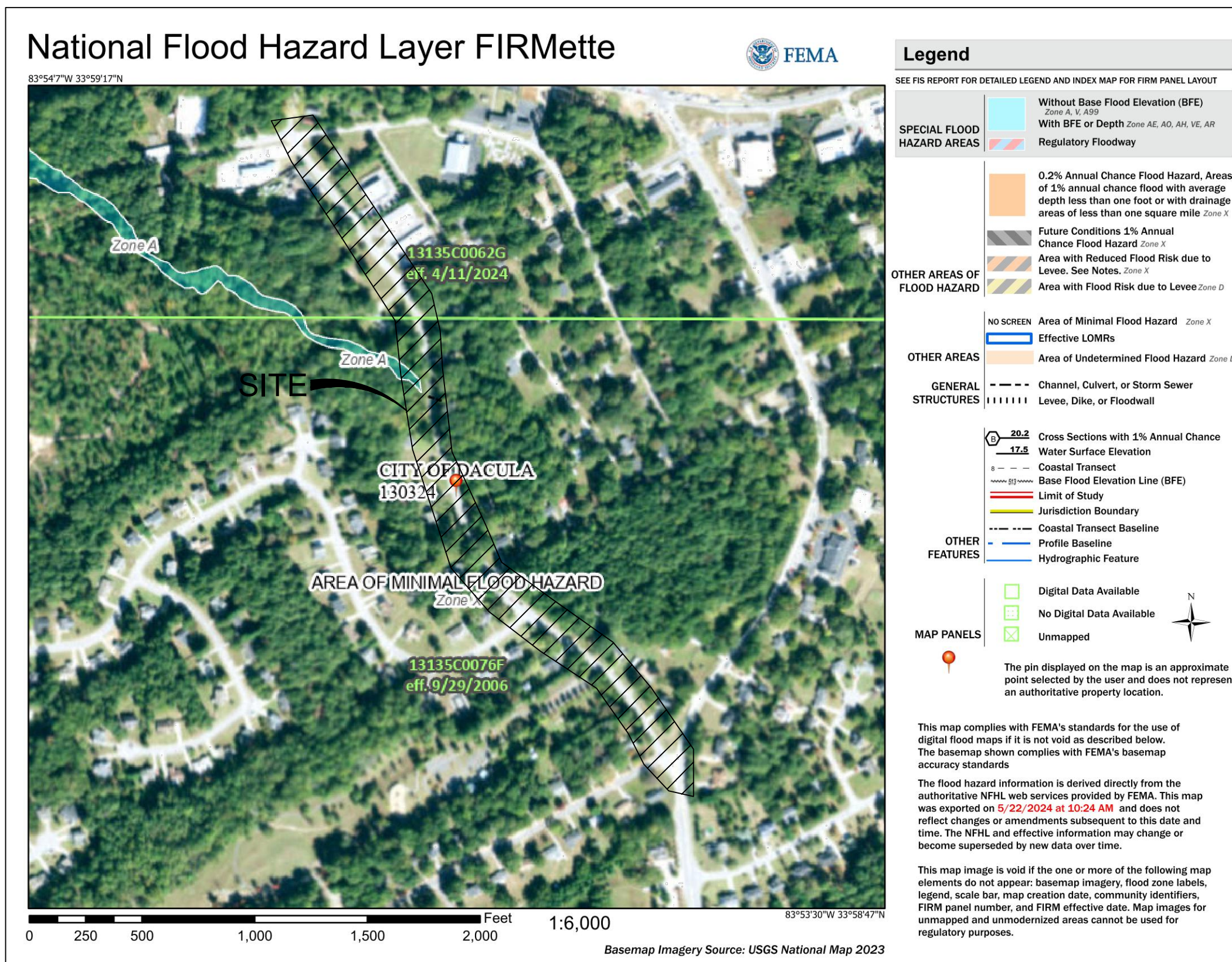
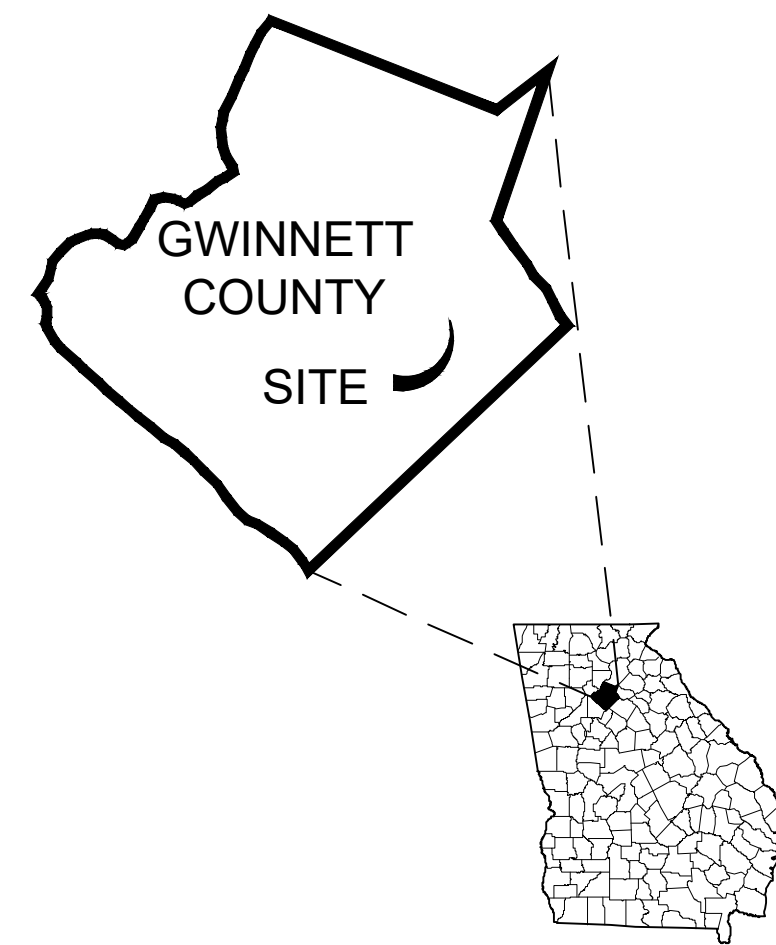


CDBG PROJECT FOR MCMILLAN ROAD PAVING, DRAINAGE, AND SIDEWALK IMPROVEMENTS FOR CITY OF DACULA



DRAWING INDEX		SUBMITTALS			
SHEET NUMBER	SHEET NAME	5/24/2024			
		1	2	3	4
C000	COVER SHEET	X			
C100	OVERALL SITE PLAN	X			
C101	SITE PLAN	X			
C102	SITE PLAN	X			
C103	SITE PLAN	X			
C104	SITE PLAN	X			
C105	SITE PLAN	X			
C200	INTERSECTION PLAN	X			
C300	CONSTRUCTION DETAILS	X			
C301	CONSTRUCTION DETAILS	X			



Bowman Consulting Group Ltd
4174 Silver Peak Parkway
Suwanee, GA 30024
Phone: (770) 952-6550
www.bowman.com
© 2021 Bowman Consulting Group Ltd

COVER SHEET
CDBG PROJECT FOR MCMILLAN ROAD
PAVING, DRAINAGE, AND SIDEWALK IMPROVEMENTS
MCMILLAN ROAD
DACULA, GA 30019
CITY OF DACULA, GA
GWINNETT COUNTY

CONSULTANT PROJECT #
200295-01-002



PLAN STATUS

5/24/2024	BID SET
-----------	---------

DATE	DESCRIPTION
--	RWH KDW
DESIGN	DRAWN CHKD

SCALE

JOB No. 200295-01-002

DATE : May 31, 2024

FILE No.

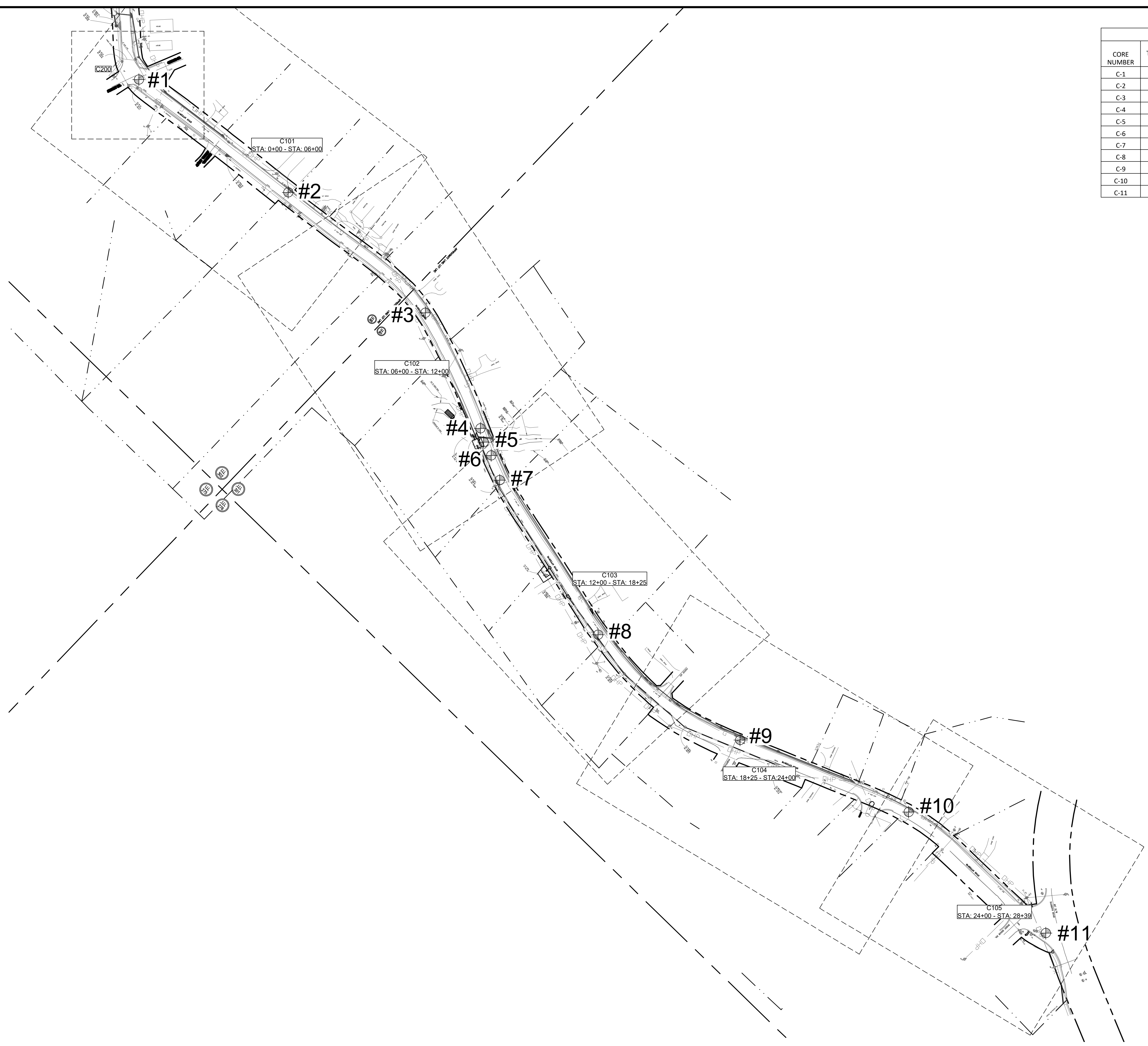
SHEET No. C000

May 31, 2024
File Path: \\020295 - MCMILLAN RD PROJECT\020295-01-002 (ENR) - City of Dacula\Information\Engineering\Projects\020295-01-002 C100 Site Plan.dwg
This drawing is the property of Bowman Consulting Group Ltd. It is to be used only for the project and location specified on the title block. No part of this drawing may be reproduced, stored in a retrieval system, or transmitted in any form or by any means, electronic, mechanical, photocopying, recording, or by any information storage and retrieval system, without the prior written authorization and adaptation by Bowman Consulting Group Ltd. All rights reserved. No liability shall be assumed by Bowman Consulting Group Ltd. for any errors or omissions in this drawing.

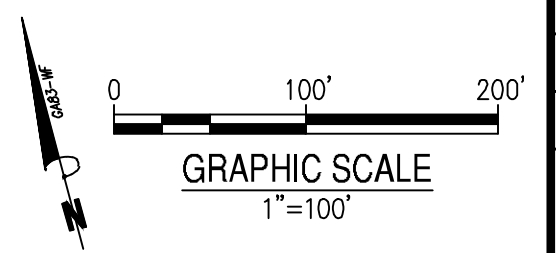


FLOOD PLAN NOTE:
PART OF THIS PROJECT DOES NOT LAY WITHIN A SPECIAL FLOOD HAZARD AREA (SFHA) PER FEMA FIRM PANEL 13135C0062G DATED 4/11/2024 & 13135C0076F DATED 9/29/2006.

May 31, 2024
 File Path: \\020205 - McMillan Rd Projects\2025-01-02 (ENR) - City of Decatur\McMillan - Project\Engineering\Engineering - Plans\2025-01-02 C100 Site Plan.dwg
 User: KWHITMAN
 The information contained herein is the property of Bowman Consulting Group, Inc. and is to be used only for the project and location specifically identified herein. No part of this information may be reproduced or transmitted in any form or by any means electronic or mechanical, including photocopying, recording, or by any information storage and retrieval system, without the prior written permission of Bowman Consulting Group, Inc. All rights reserved.



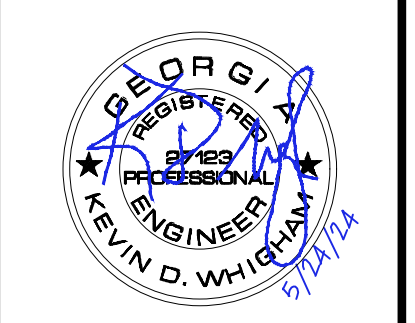
CORE TABLE			
CORE NUMBER	GAB THICKNESS (IN.)	ASPHALT TOPPING THICKNESS (IN.)	ASPHALT BINDER THICKNESS (IN.)
C-1	5	1.5	3
C-2	8	1.5	2
C-3	11	1.5	2
C-4	14	1.5	2
C-5	11	1.5	3
C-6	8.5	1.5	3
C-7	10	2	2.25
C-8	6.5	1.5	2.25
C-9	10	1.25	2
C-10	11.5	1.25	1.875
C-11	5	1.625	2.625



Bowman Consulting Group, Ltd
 4174 Silver Peak Parkway
 Suwanee, GA 30024
 Phone: (770) 952-6550
 www.bowman.com
 © 2021 Bowman Consulting Group, Ltd

OVERALL SITE PLAN
CDBG PROJECT FOR McMILLAN ROAD
PAVING, DRAINAGE, AND SIDEWALK IMPROVEMENTS
 McMILLAN ROAD
 DACULA, GA 30019
 CITY OF DACULA, GA
 GWINNETT COUNTY

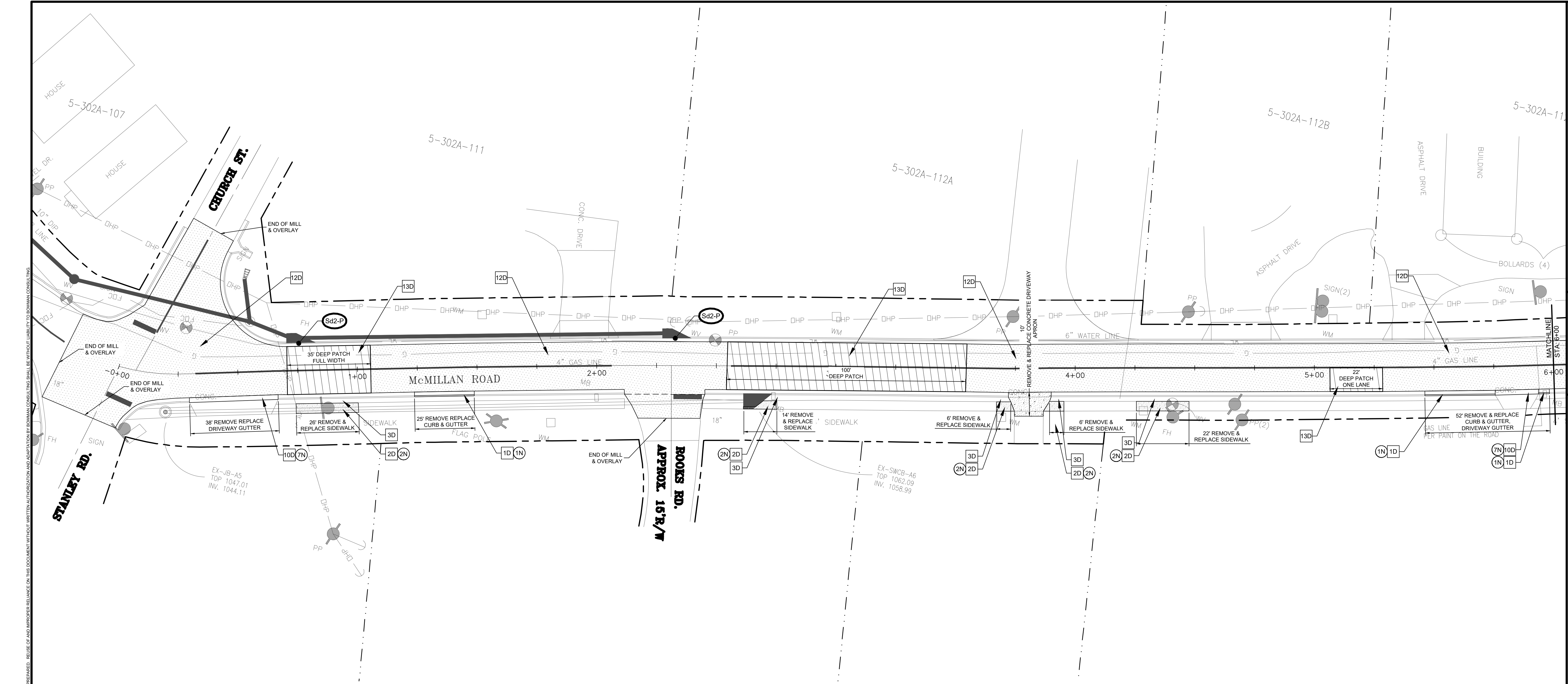
CONSULTANT PROJECT #
 200295-01-002



PLAN STATUS
 5/24/2024 BID SET

DATE	DESCRIPTION
..	RWH KDW
DESIGN	DRAWN CHKD

SCALE :
 JOB No. : 200295-01-002
 DATE : May 31, 2024
 FILE No. :
 SHEET No. : **C100**



NOTES

- 1N DEMOLISH & REMOVE EXISTING CONCRETE CURB & GUTTER TO EARTH SUBGRADE.
- 2N DEMOLISH & REMOVE EXISTING CONCRETE SIDEWALK TO EARTH SUBGRADE.
- 3N DEMOLISH & REMOVE EXISTING CONCRETE ISLAND TO EARTH SUBGRADE.
- 4N SAW-CUT AT LIMITS OF DEMOLITION.
- 5N REMOVE AND REPLACE EXISTING HANDRAIL.
- 6N ADJUST JUNCTION BOX LID AND FRAME TO PROPOSED SIDEWALK ELEVATION.
- 7N DEMOLISH & REMOVE EXISTING DRIVEWAY GUTTER.
- 8N DEMOLISH & REMOVE EXISTING DRIVEWAY APRON.

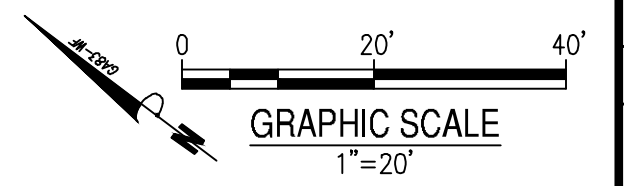
DETAILS

- 1D PROPOSED 24" CONCRETE CURB & GUTTER.
- 2D PROPOSED CONCRETE SIDEWALK.
- 3D PROPOSED GRASS STRIP ADJACENT TO BACK OF CURB.
- 4D PROPOSED HANDRAIL TO MATCH AND TIE TO EXISTING HANDRAIL.
- 5D PROPOSED CROSSWALK.
- 6D PROPOSED 24" STOP BAR.
- 7D PROPOSED DOUBLE 4" SOLID YELLOW TRAFFIC STRIPING.
- 8D PROPOSED YELLOW TRAFFIC HATCHING PER MUTCD.
- 9D PROPOSED 4" SKIP YELLOW TRAFFIC STRIPING.
- 10D PROPOSED DRIVEWAY GUTTER.
- 11D PROPOSED CONCRETE DRIVEWAY APRON.
- 12D PROPOSED MILL & OVERLAY ASPHALT PAVEMENT.
- 13D PROPOSED DEEP MILL & PATCH ASPHALT PAVEMENT.

LEGEND

- PROPERTY LINE / RIGHT OF WAY
- 2" MILL & OVERLAY ASPHALT PAVEMENT, SEE DETAIL.
- DEEP PATCH MILL AND OVERLAY, SEE DETAIL.
- EXISTING ASPHALT TO HAVE ROUTED CRACK SEAL AND SEALCOAT OVERLAY
- REMOVE & REPLACE EXISTING CONCRETE SIDEWALK, COMPACT BASE, SEE DETAIL SHEET C100
- REMOVE & REPLACE EXISTING CONCRETE CURB & GUTTER SEE DETAIL

DETAIL CHART	
DETAIL DESCRIPTION	DETAIL # / SHEET
24" CONCRETE CURB & GUTTER DETAIL	1 / C300
CONCRETE SIDEWALK DETAIL	2 / C300
TRAFFIC MARKINGS	3 / C300
PAVEMENT DETAILS	4 / C300
PIPE BEDDING	5 / C300
PAVEMENT PATCH FOR OPEN CUT	6 / C300
TEMPORARY SEDIMENT TRAP (Sd2-P, PIG-IN-BLANKET)	7 / C300
SINGLE WING CATCH BASIN DETAIL	1 / C301
DOUBLE WING CATCH BASIN DETAIL	2 / C301
JUNCTION BOX DETAIL	3 / C301
DROP INLET DETAIL	4 / C301
CONCRETE DRIVEWAY DETAIL	1 / C302
STREET SIGN DETAIL	2 / C302



May 31, 2024
 File Path: \\020295 - McMillan Rd Project\20295-01-002 (ENR) - City of Decatur\McMillan - Project\Engineering\Engineering Plans\20295-01-02 C101 Site Plan.dwg
 PLOTTED BY: KWH/2024/05/31 10:00 AM. PLOT DATE: 2024/05/31 10:00 AM. PLOT TIME: 00:00. PLOT SCALE: 1:1. PLOT SHEET: 1 OF 1.



Bowman Consulting Group Ltd
 4174 Silver Peak Parkway
 Suwanee, GA 30024
 Phone: (770) 952-6650
 www.bowman.com
 © 2021 Bowman Consulting Group Ltd

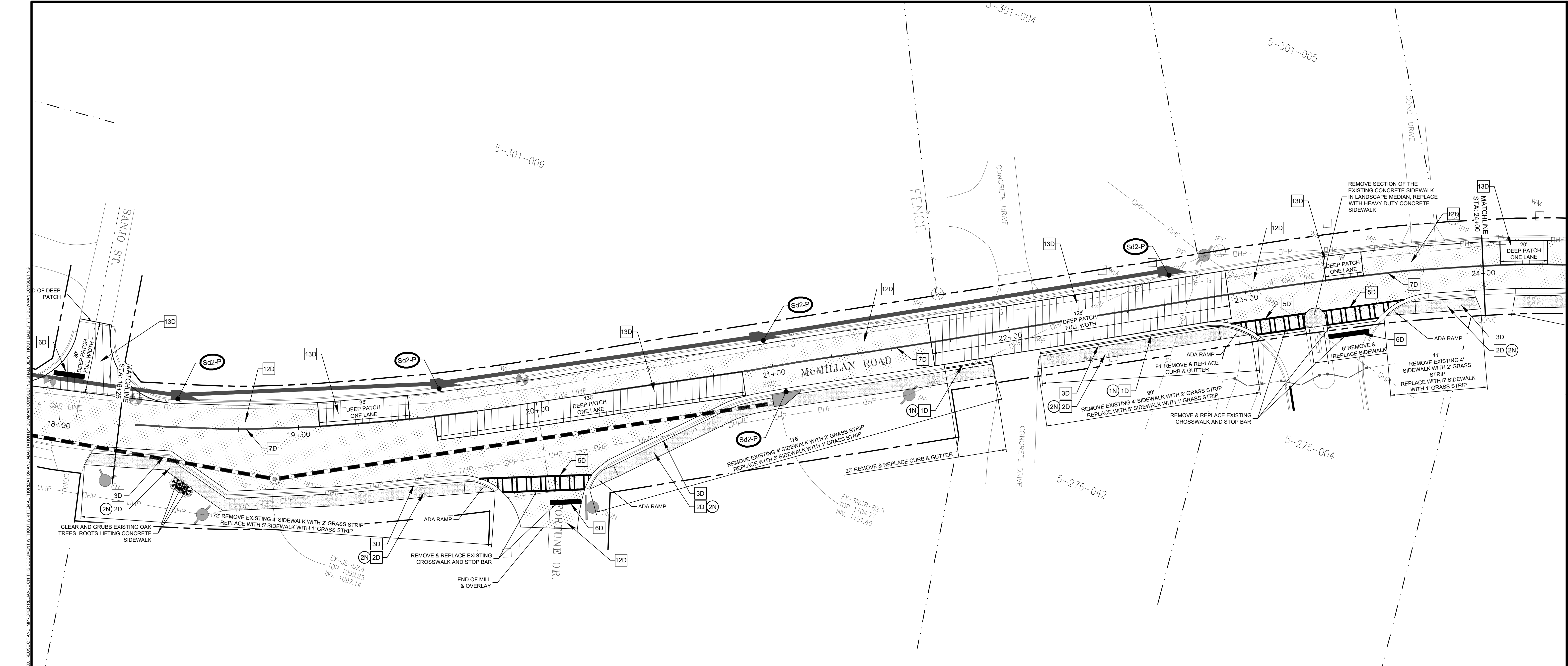
SITE PLAN
CDBG PROJECT FOR McMILLAN ROAD
PAVING, DRAINAGE, AND SIDEWALK IMPROVEMENTS
 McMILLAN ROAD
 DACULA, GA 30019
 GWINNETT COUNTY
 CITY OF DACULA, GA

CONSULTANT PROJECT # 200295-01-002



PLAN STATUS

5/24/2024	BID SET
DATE	DESCRIPTION
DESIGN	RWH
DRAWN	KDW
CHKD	
SCALE	
JOB No.	200295-01-002
DATE	May 31, 2024
FILE No.	
SHEET No.	C101



NOTES

- 1N DEMOLISH & REMOVE EXISTING CONCRETE CURB & GUTTER TO EARTH SUBGRADE.
- 2N DEMOLISH & REMOVE EXISTING CONCRETE SIDEWALK TO EARTH SUBGRADE.
- 3N DEMOLISH & REMOVE EXISTING CONCRETE ISLAND TO EARTH SUBGRADE.
- 4N SAW-CUT AT LIMITS OF DEMOLITION.
- 5N REMOVE AND REPLACE EXISTING HANDRAIL.
- 6N ADJUST JUNCTION BOX LID AND FRAME TO PROPOSED SIDEWALK ELEVATION.
- 7N DEMOLISH & REMOVE EXISTING DRIVEWAY GUTTER.
- 8N DEMOLISH & REMOVE EXISTING DRIVEWAY APRON.

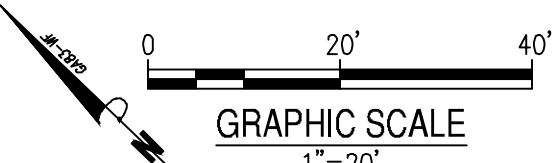
DETAILS

- 1D PROPOSED 24" CONCRETE CURB & GUTTER.
- 2D PROPOSED CONCRETE SIDEWALK.
- 3D PROPOSED GRASS STRIP ADJACENT TO BACK OF CURB.
- 4D PROPOSED HANDRAIL TO MATCH AND TIE TO EXISTING HANDRAIL.
- 5D PROPOSED CROSSWALK.
- 6D PROPOSED 24" STOP BAR.
- 7D PROPOSED DOUBLE 4" SOLID YELLOW TRAFFIC STRIPING.
- 8D PROPOSED YELLOW TRAFFIC HATCHING PER MUTCD.
- 9D PROPOSED 4" SKIP YELLOW TRAFFIC STRIPING.
- 10D PROPOSED DRIVEWAY GUTTER.
- 11D PROPOSED CONCRETE DRIVEWAY APRON.
- 12D PROPOSED MILL & OVERLAY ASPHALT PAVEMENT.
- 13D PROPOSED DEEP MILL & PATCH ASPHALT PAVEMENT.

LEGEND

- PROPERTY LINE / RIGHT OF WAY
- 2" MILL & OVERLAY ASPHALT PAVEMENT, SEE DETAIL.
- DEEP PATCH MILL AND OVERLAY, SEE DETAIL.
- EXISTING ASPHALT TO HAVE ROUTED CRACK SEAL AND SEALCOAT OVERLAY
- REMOVE & REPLACE EXISTING CONCRETE SIDEWALK, COMPACT BASE, SEE DETAIL SHEET C100
- REMOVE & REPLACE EXISTING CONCRETE CURB & GUTTER SEE DETAIL

DETAIL CHART	
DETAIL DESCRIPTION	DETAIL # / SHEET
24" CONCRETE CURB & GUTTER DETAIL	1 / C300
CONCRETE SIDEWALK DETAIL	2 / C300
TRAFFIC MARKINGS	3 / C300
PAVEMENT DETAILS	4 / C300
PIPE BEDDING	5 / C300
PAVEMENT PATCH FOR OPEN CUT	6 / C300
TEMPORARY SEDIMENT TRAP (Sd2-P, PIG-IN-BLANKET)	7 / C300
SINGLE WING CATCH BASIN DETAIL	1 / C301
DOUBLE WING CATCH BASIN DETAIL	2 / C301
JUNCTION BOX DETAIL	3 / C301
DROP INLET DETAIL	4 / C301
CONCRETE DRIVEWAY DETAIL	1 / C302
STREET SIGN DETAIL	2 / C302



Bowman
 Certificate of Authorization License No. LSF001241

Bowman Consulting Group Ltd
 4174 Silver Peak Parkway
 Suwanee, GA 30024
 Phone: (770) 952-6550
 www.bowman.com

SITE PLAN
 CDBG PROJECT FOR McMILLAN ROAD
 PAVING, DRAINAGE, AND SIDEWALK IMPROVEMENTS
 McMILLAN ROAD
 DACULA, GA 30019
 GWINNETT COUNTY

CONSULTANT PROJECT #
 200295-01-002



PLAN STATUS

5/24/2024	BID SET

DATE	DESCRIPTION
..	RWH KDW
DESIGN	DRAWN CHKD

SCALE

JOB No. 200295-01-002

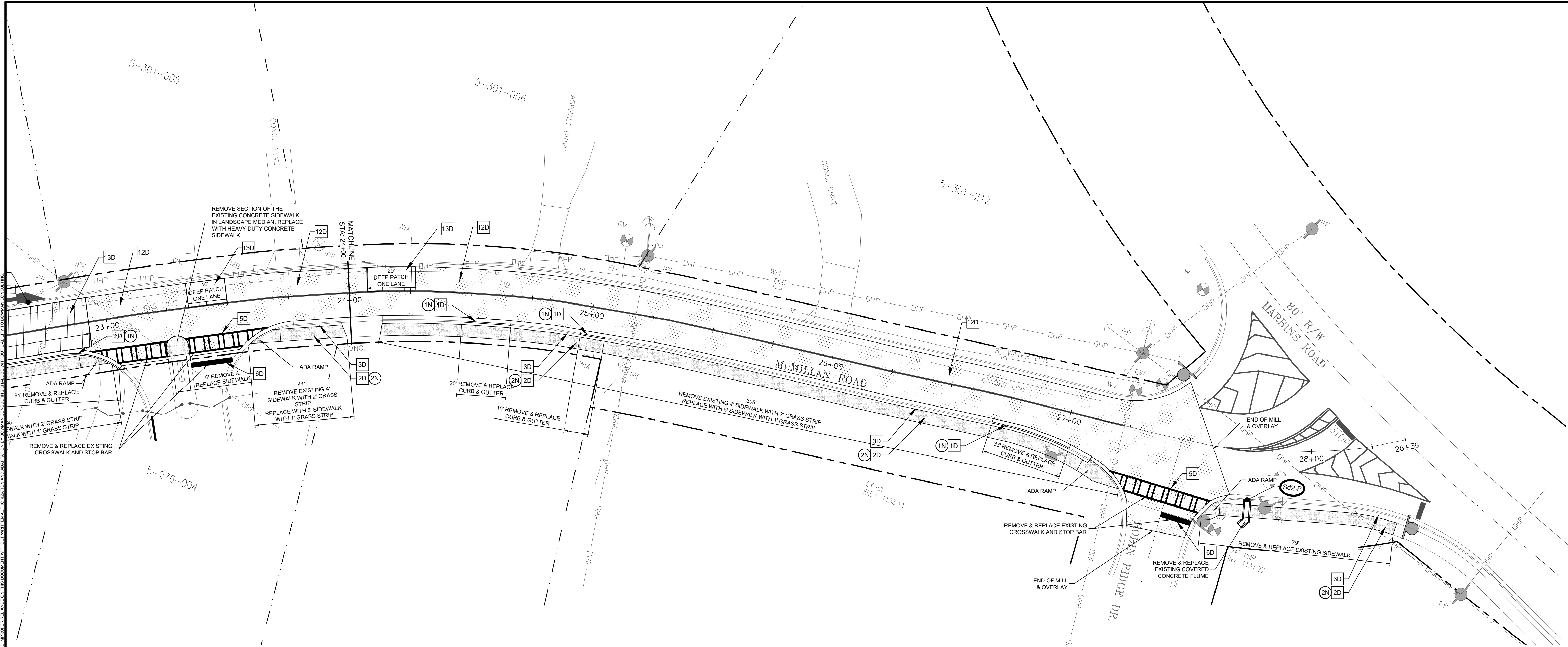
DATE : May 31, 2024

FILE No.

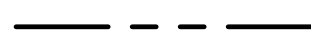
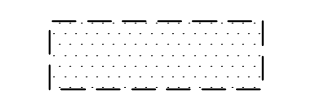
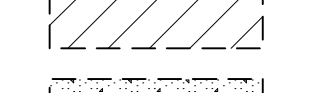

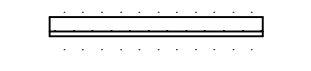
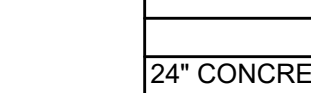
SHEET No. **C104**



May 31, 2024
 File Path: \\020295 - McMillan Rd Project\202505-01-002 (ENR) - City of Dacula\McMillan - Project\Engineering\Engineering Plans\202505-01-002 C104 Site Plan.dwg
 Project: CDBG Project for McMillan Road Paving, Drainage, and Sidewalk Improvements
 Prepared by: Kevin D. Whigham, Professional Engineer, License No. 12174, State of Georgia
 Checked by: [Name Redacted], Professional Engineer, License No. [Number Redacted], State of Georgia
 Date: 5/24/2024



LEGEND

-  PROPERTY LINE / RIGHT OF WAY
-  2" MILL & OVERLAY ASPHALT PAVEMENT, SEE DETAIL.
-  DEEP PATCH MILL AND OVERLAY, SEE DETAIL.
-  EXISTING ASPHALT TO HAVE ROUTED CRACK SEAL AND SEALCOAT OVERLAY
-  REMOVE & REPLACE EXISTING CONCRETE SIDEWALK, COMPACT BASE, SEE DETAIL SHEET C100
-  REMOVE & REPLACE EXISTING CONCRETE CURB & GUTTER SEE DETAIL

NOTES

- 1N DEMOLISH & REMOVE EXISTING CONCRETE CURB & GUTTER TO EARTH SUBGRADE.
- 2N DEMOLISH & REMOVE EXISTING CONCRETE SIDEWALK TO EARTH SUBGRADE.
- 3N DEMOLISH & REMOVE EXISTING CONCRETE ISLAND TO EARTH SUBGRADE.
- 4N SAW-CUT AT LIMITS OF DEMOLITION.
- 5N REMOVE AND REPLACE EXISTING HANDRAIL.
- 6N ADJUST JUNCTION BOX LID AND FRAME TO PROPOSED SIDEWALK ELEVATION.
- 7N DEMOLISH & REMOVE EXISTING DRIVEWAY GUTTER.
- 8N DEMOLISH & REMOVE EXISTING DRIVEWAY APRON.

DETAILS

- 1D PROPOSED 24" CONCRETE CURB & GUTTER.
- 2D PROPOSED CONCRETE SIDEWALK.
- 3D PROPOSED GRASS STRIP ADJACENT TO BACK OF CURB.
- 4D PROPOSED HANDRAIL TO MATCH AND TIE TO EXISTING HANDRAIL.
- 5D PROPOSED CROSSWALK.
- 6D PROPOSED 24" STOP BAR.
- 7D PROPOSED DOUBLE 4" SOLID YELLOW TRAFFIC STRIPING.
- 8D PROPOSED YELLOW TRAFFIC HATCHING PER MUTCD.
- 9D PROPOSED 4" SKIP YELLOW TRAFFIC STRIPING.
- 10D PROPOSED DRIVEWAY GUTTER.
- 11D PROPOSED CONCRETE DRIVEWAY APRON.
- 12D PROPOSED MILL & OVERLAY ASPHALT PAVEMENT.
- 13D PROPOSED DEEP MILL & PATCH ASPHALT PAVEMENT.

DETAIL CHART

DETAIL DESCRIPTION	DETAIL # / SHEET
24" CONCRETE CURB & GUTTER DETAIL	1 / C300
CONCRETE SIDEWALK DETAIL	2 / C300
TRAFFIC MARKINGS	3 / C300
PAVEMENT DETAILS	4 / C300
PIPE BEDDING	5 / C300
PAVEMENT PATCH FOR OPEN CUT	6 / C300
TEMPORARY SEDIMENT TRAP (Sd2-P, FIG-IN-BLANKET)	7 / C300
SINGLE WING CATCH BASIN DETAIL	1 / C301
DOUBLE WING CATCH BASIN DETAIL	2 / C301
JUNCTION BOX DETAIL	3 / C301
DROP INLET DETAIL	4 / C301
CONCRETE DRIVEWAY DETAIL	1 / C302
STREET SIGN DETAIL	2 / C302

