

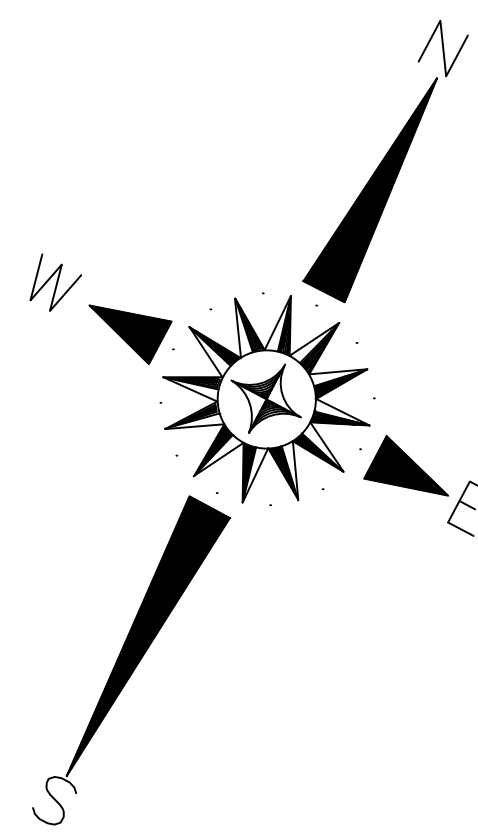
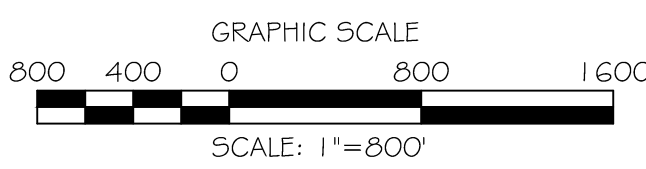
# Official Map of the Corporate Limits of the City of Dacula, Georgia.



## ZONING DISTRICT LEGEND

- AG AGRICULTURAL DISTRICT
- R-1100 SINGLE FAMILY RESIDENTIAL
- R-1200 SINGLE FAMILY RESIDENTIAL
- R-1400 SINGLE FAMILY RESIDENTIAL
- R-1600 SINGLE FAMILY RESIDENTIAL
- CZP SINGLE FAMILY RESIDENTIAL
- CSO SINGLE FAMILY RESIDENTIAL
- R-TH SINGLE FAMILY RESIDENCE TOWNHOUSE DISTRICT
- RSR SENIOR ORIENTED RESIDENTIAL
- TRD TRANSITIONAL RESIDENTIAL DISTRICT
- R-MD MULTI - FAMILY RESIDENTIAL
- MH MOBILE HOME PARK OR SUBDIVISION
- PMUD PLANNED MIXED USE DISTRICT
- OI OFFICE INSTITUTIONAL
- C-1 NEIGHBORHOOD COMMERCIAL DISTRICT
- C-2 GENERAL BUSINESS DISTRICT
- C-3 CENTRAL BUSINESS DISTRICT
- M-1 LIGHT INDUSTRY DISTRICT
- M-2 HEAVY INDUSTRY DISTRICT
- PARK (CITY) PARKS
- GOV GOVERNMENT FACILITY
- DOD DOWNTOWN OVERLAY DISTRICT

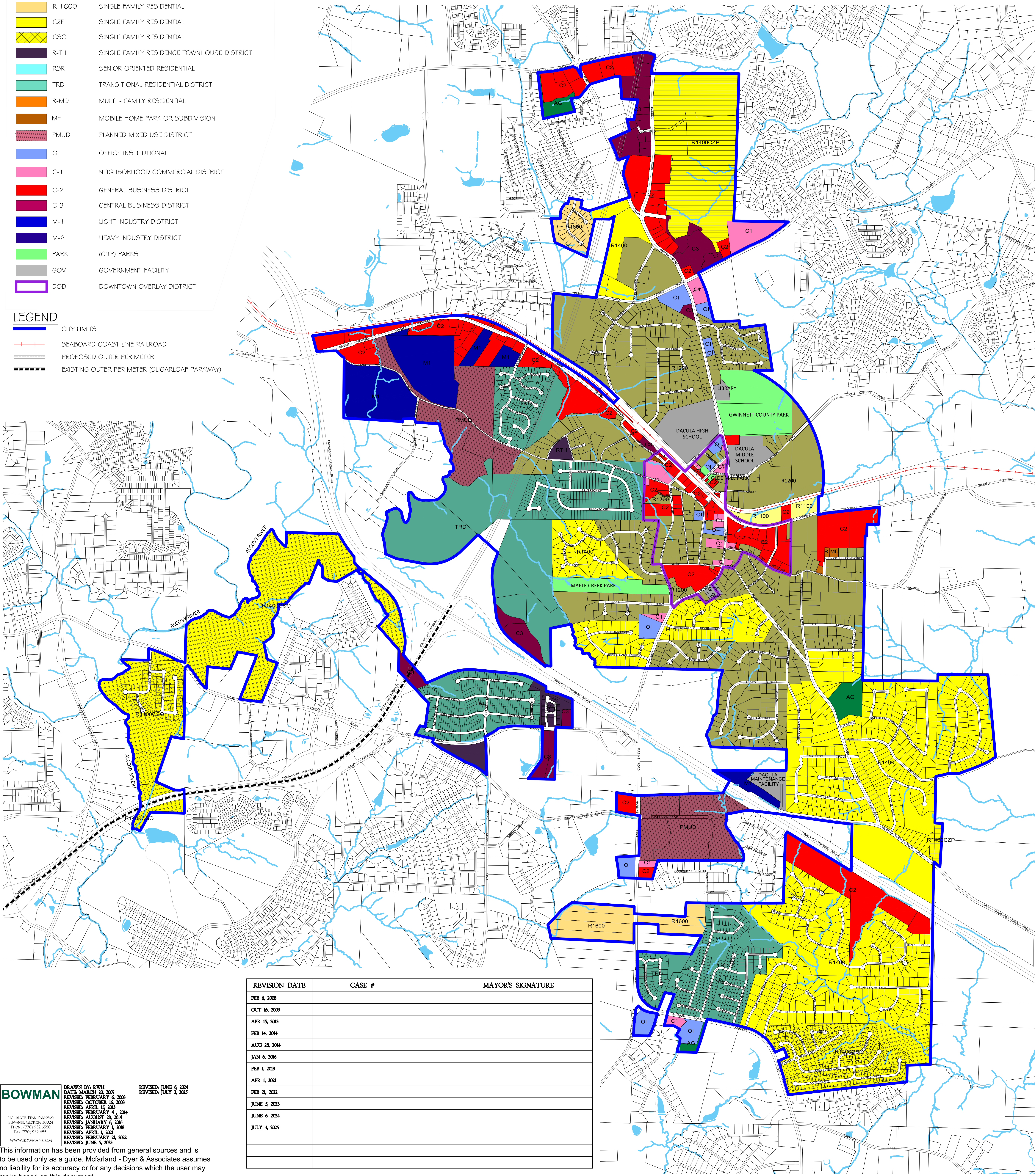
- LEGEND**
- CITY LIMITS
  - SEABOARD COAST LINE RAILROAD
  - PROPOSED OUTER PERIMETER
  - EXISTING OUTER PERIMETER (SUGARLOAF PARKWAY)



ZONING MAP ADOPTION

CITY OF DACULA, MAYOR

DATE



REVISION DATE	CASE #	MAYOR'S SIGNATURE
FEB 6, 2008		
OCT 16, 2009		
APR 15, 2013		
FEB 14, 2014		
AUG 28, 2014		
JAN 6, 2016		
FEB 1, 2018		
APR 1, 2021		
FEB 21, 2022		
JUNE 5, 2023		
JUNE 6, 2024		
JULY 3, 2025		

**BOWMAN**

DRAWN BY: RWH  
DATE: MARCH 20, 2007  
REVISED: FEBRUARY 6, 2008  
REVISED: OCTOBER 16, 2008  
REVISED: APRIL 15, 2013  
REVISED: FEBRUARY 4, 2014  
REVISED: AUGUST 28, 2014  
REVISED: JANUARY 6, 2016  
REVISED: FEBRUARY 1, 2018  
REVISED: APRIL 1, 2021  
REVISED: FEBRUARY 21, 2022  
REVISED: JUNE 5, 2023

474 SILVER PINE PARKWAY  
SUWANEE, GEORGIA 30024  
PHONE (770) 934-6590  
FAX (770) 934-6558  
WWW.BOWMAN.COM

This information has been provided from general sources and is to be used only as a guide. McFarland - Dyer & Associates assumes no liability for its accuracy or for any decisions which the user may make based on this document.