



**Xylem Water Solutions USA, Inc.  
Flygt Products**

February 22, 2024

90 Horizon Drive  
Suwanee, GA 30024  
Tel (770) 932-4320  
Fax (770) 932-4321

CITY OF CARTERSVILLE  
PO BOX 1390  
CARTERSVILLE GA 30120-1390

Quote # 2024-ATL-0134  
Project Name: CITY OF CARTERSVILLE  
Job Name: WO-00259148 / Main Street

Xylem Water Solutions USA, Inc. is pleased to provide a quote for the following Flygt equipment.

**3152.181-9820084**

Qty	Description		
1	Flygt Model NP-3153.185 4" volute Submersible pump equipped with a 460 Volt / 3 phase / 60 Hz 23 HP 3550 RPM motor, 275 impeller, 1 x 50 Ft. length of SUBCAB 4G10+S(2x0,5) submersible cable, FLS leakage detector, volute is prepared for Flush Valve		
		<b>3152.181-9820084 Price USD</b>	<b>\$ 21,700.00</b>

**Recommended Services**

Qty	Description	Total Price
1	START UP,FLYGT,NO TAX 1-TP MODELS: 3000,7000,8000	\$ 1,575.00
<b>Recommended Services:</b>		<b>\$ 1,575.00</b>
<b>Total Equipment:</b>		<b>\$ 21,700.00</b>
<b>Freight:</b>		<b>\$ 1,188.00</b>
<b>Subtotal Equipment + Freight:</b>		<b>\$ 22,888.00</b>
<b>Recommended Services :</b>		<b>\$ 1,575.00</b>
<b>Total with Recommended Services :</b>		<b>\$ 24,463.00</b>

**Terms & Conditions**

This order is subject to the Standard Terms and Conditions of Sale – Xylem Americas effective on the date the order is accepted which terms are available at <http://www.xylem.com/en-us/Pages/terms->



[conditions-of-sale.aspx](#) and incorporated herein by reference and made a part of the agreement between the parties.

**Purchase Orders:** Please make purchase orders out to: Xylem Water Solutions USA, Inc.

**Freight Terms:** 3 DAP - Delivered At Place 08 - Jobsite (per IncoTerms 2020)

See Freight Payment (Delivery Terms) below.

**Taxes:** State, local and other applicable taxes are not included in this quotation.

**Back Charges:** Buyer shall not make purchases nor shall Buyer incur any labor that would result in a back charge to Seller without prior written consent of an authorized employee of Seller.

**Shortages:** Xylem will not be responsible for apparent shipment shortages or damages incurred in shipment that are not reported within two weeks from delivery to the jobsite. Damages should be noted on the receiving slip and the truck driver advised of the damages. Please contact our office as soon as possible to report damages or shortages so that replacement items can be shipped and the appropriate claims made.

**Validity:** This Quote is valid for thirty (30) days.

**Terms of delivery:** Freight PP/Line Item

**Time of delivery:** We currently have ONE in stock in USA for immediate delivery!!

**Terms of payment:** 100% N60 after invoice date – upon acceptance of purchase order and credit review

**Please note:** If this is an FM Factory certified product it must be serviced by an EX/FM Flygt manufacture trained technician through an approved Xylem Flygt repair shop to retain qualifying status of product to retain the "EX/FM" designation.

Our current delivery lead-times are forecasted estimates only due to the outbreak of the COVID-19 virus pandemic and its global effects on commerce, supply chain, and logistics. Xylem will, however, use all commercially reasonable efforts to minimize any delivery delay impacts.

Thank you for the opportunity to provide this quotation. Please contact us if there are any questions.

Sincerely,



Kirsten Royals  
Senior Customer Support Coordinator

Cell: 404-831-4726



kirsten.royals@xylem.com  
Fax: 770-932-4321





**Customer Acceptance**

This order is subject to the Standard Terms and Conditions of Sale – Xylem Americas effective on the date the order is accepted which terms are available at <http://www.xyleminc.com/en-us/Pages/terms-conditions-of-sale.aspx> and incorporated herein by reference and made a part of the agreement between the parties.

A signed copy of this Quote is acceptable as a binding contract.

**Purchase Orders:** Please make purchase orders out to: Xylem Water Solutions USA, Inc.

Quote #: 2024-ATL-0134  
Customer Name: CITY OF CARTERSVILLE  
Job Name: WO-00259148 / Main Street

Accept Equipment and Freight Total Amount: **\$ 22,888.00**

Accept Equipment, Freight and Recommended Services Total Amount: **\$ 24,463.00**

Signature: \_\_\_\_\_ Name: \_\_\_\_\_  
(PLEASE PRINT)

Company/Utility: \_\_\_\_\_ PO: \_\_\_\_\_

Address: \_\_\_\_\_ Date: \_\_\_\_\_

\_\_\_\_\_ Phone: \_\_\_\_\_

\_\_\_\_\_ Email: \_\_\_\_\_

\_\_\_\_\_ Fax: \_\_\_\_\_



# NP 3153 SH 3~ 275

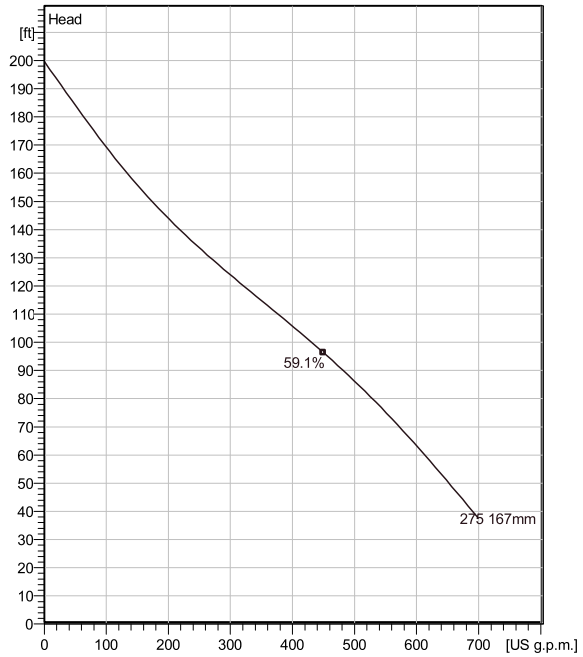
Patented self cleaning semi-open channel impeller, ideal for pumping in waste water applications. Modular based design with high adaptation grade.



## Technical specification



Curves according to: Water, pure Water, pure [100%], 39.2 °F, 62.42 lb/ft<sup>3</sup>, 1.6891E-5 ft<sup>2</sup>/s



Nominal (mean) data shown. Under- and over-performance from this data should be expected due to standard manufacturing tolerances. Please consult your local Flygt representative for performance guarantees.

## Configuration

<b>Motor number</b> N3153.185 21-18-2BB-W 23hp	<b>Installation type</b> P - Semi permanent, Wet
<b>Impeller diameter</b> 167 mm	<b>Discharge diameter</b> 3 inch

## Pump information

<b>Impeller diameter</b> 167 mm
<b>Discharge diameter</b> 3 inch
<b>Inlet diameter</b> 150 mm
<b>Maximum operating speed</b> 3510 rpm
<b>Number of blades</b> 2
<b>Max. fluid temperature</b> 40 °C

## Material

<b>Impeller</b> Hard-Iron™
-------------------------------

**Project** Xylect-21891666  
**Block**

**Created by** Dan Joyce  
**Created on** 2/22/2024 **Last update** 2/22/2024

# NP 3153 SH 3~ 275

## Technical specification



### Motor - General

<b>Motor number</b> N3153.185 21-18-2BB-W 23hp	<b>Phases</b> 3~	<b>Rated speed</b> 3510 rpm	<b>Rated power</b> 23 hp
<b>ATEX approved</b> No	<b>Number of poles</b> 2	<b>Rated current</b> 26 A	<b>Stator variant</b> 4
<b>Frequency</b> 60 Hz	<b>Rated voltage</b> 460 V	<b>Insulation class</b> H	<b>Type of Duty</b> S1
<b>Version code</b> 185			

### Motor - Technical

<b>Power factor - 1/1 Load</b> 0.91	<b>Motor efficiency - 1/1 Load</b> 91.0 %	<b>Total moment of inertia</b> 0.729 lb ft <sup>2</sup>	<b>Starts per hour max.</b> 30
<b>Power factor - 3/4 Load</b> 0.87	<b>Motor efficiency - 3/4 Load</b> 91.5 %	<b>Starting current, direct starting</b> 207 A	
<b>Power factor - 1/2 Load</b> 0.79	<b>Motor efficiency - 1/2 Load</b> 91.5 %	<b>Starting current, star-delta</b> 69 A	

**Project** Xylect-21891666  
**Block**

**Created by** Dan Joyce  
**Created on** 2/22/2024 **Last update** 2/22/2024

# NP 3153 SH 3~ 275

## Performance curve

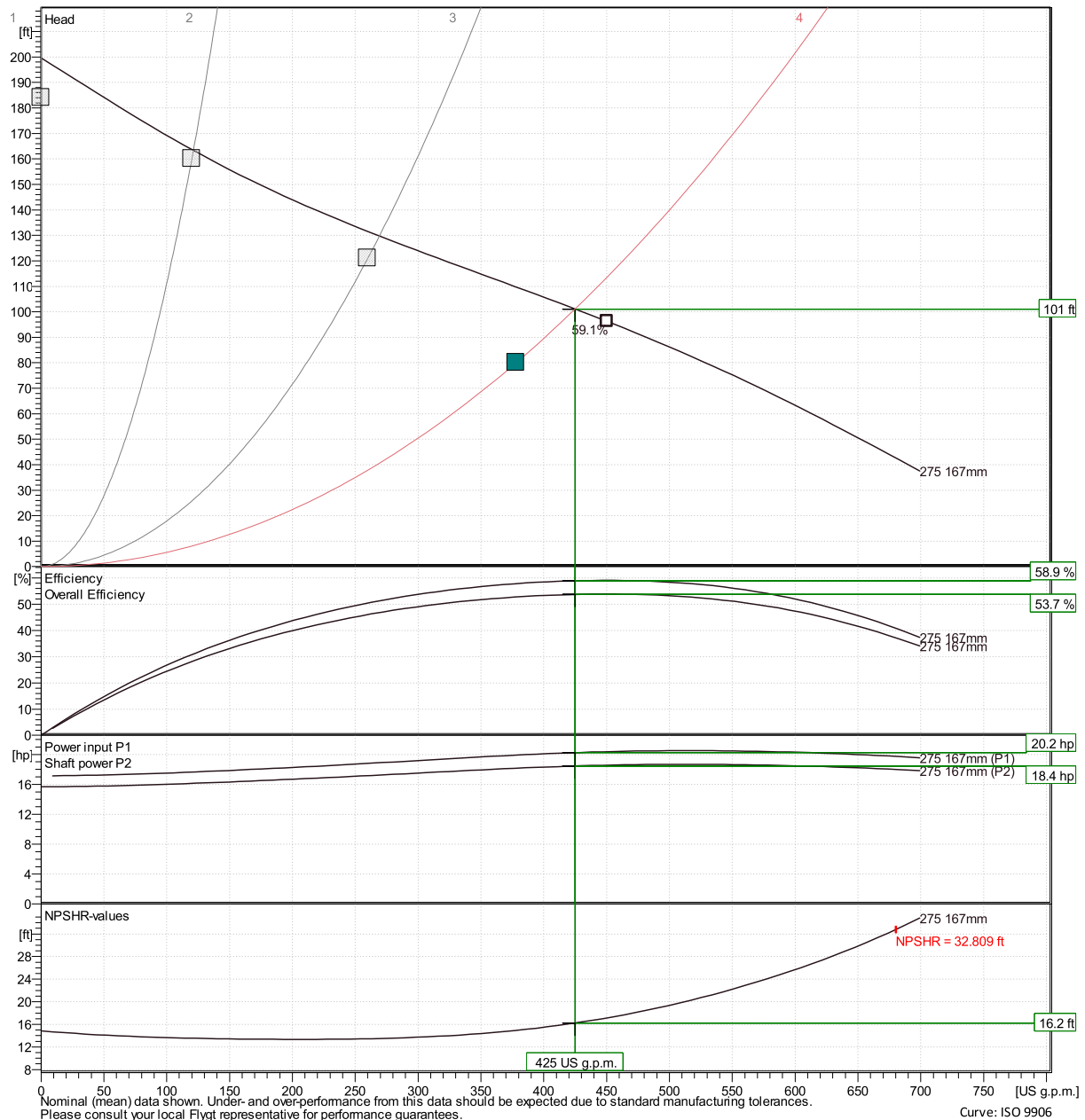


### Duty point

**Flow**  
425 US g.p.m.

**Head**  
101 ft

Curves according to: Water, pure Water, pure [100%], 39.2 °F, 62.42 lb/ft<sup>3</sup>, 1.6891E-5 ft<sup>2</sup>/s



Nominal (mean) data shown. Under- and over-performance from this data should be expected due to standard manufacturing tolerances. Please consult your local Flygt representative for performance guarantees. Curve: ISO 9906

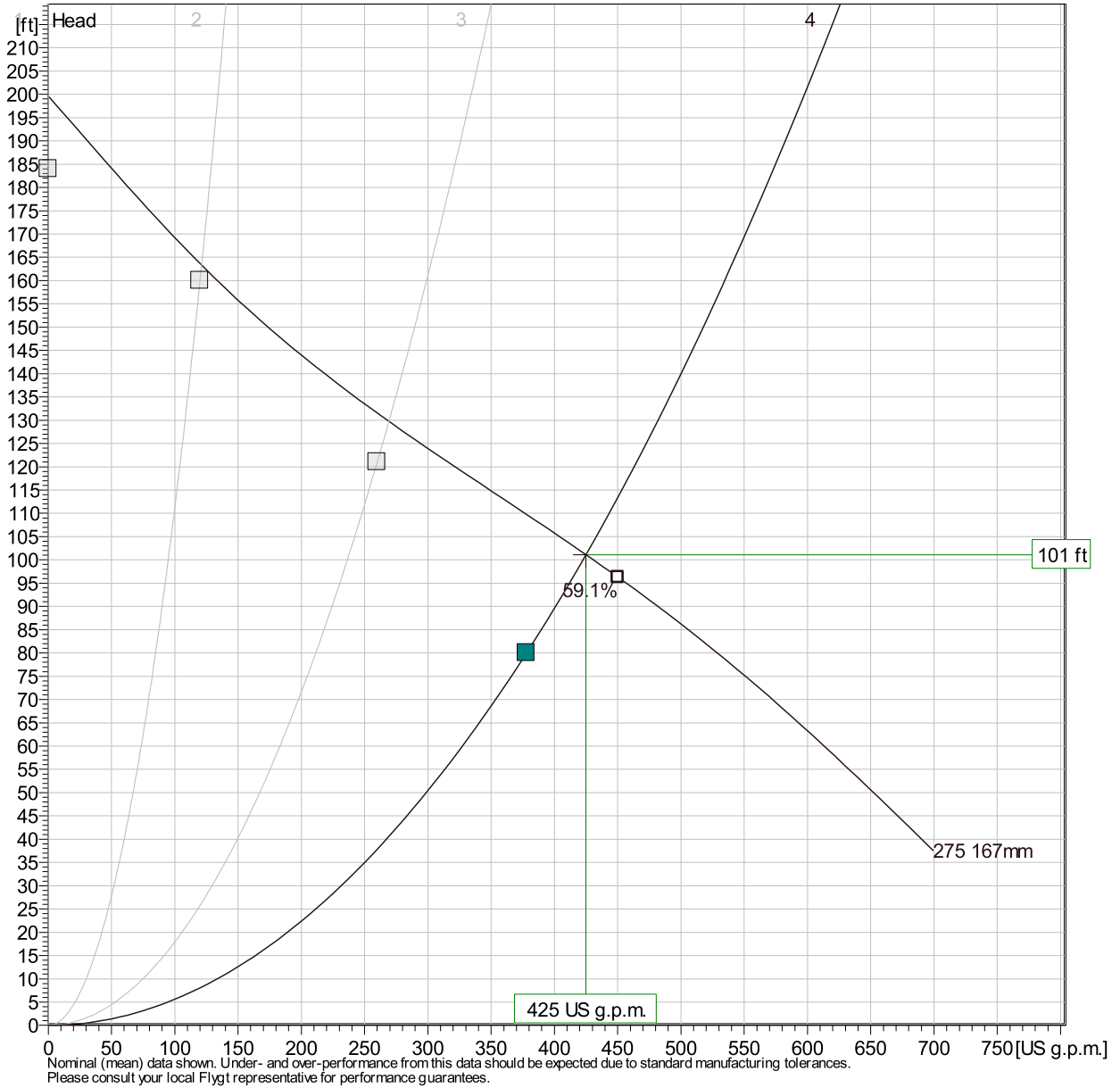
Xylect-21891666 Dan Joyce  
Created on 2/22/2024 Last update 2/22/2024

# NP 3153 SH 3~ 275

## Duty Analysis



Curves according to: Water, pure [100%]; 39.2°F; 62.42lb/ft³; 1.6891E-5ft²/s



### Operating characteristics

Pumps / Systems	Flow	Head	Shaft power	Flow	Head	Shaft power	Hydr. eff.	Spec. Energy	NPSHre
	US g.p.m.	ft	hp	US g.p.m.	ft	hp			
4	425	101	18.4	425	101	18.4	58.9 %	592	16.2
3	269	130	17.2	269	130	17.2	51.3 %	872	13.5
2	121	163	16.1	121	163	16.1	31 %	1810	13.5

<b>Project</b>		<b>Created by</b>	Dan Joyce	
<b>Block</b>	Xylect-21891666	<b>Created on</b>	2/22/2024	<b>Last update</b> 2/22/2024

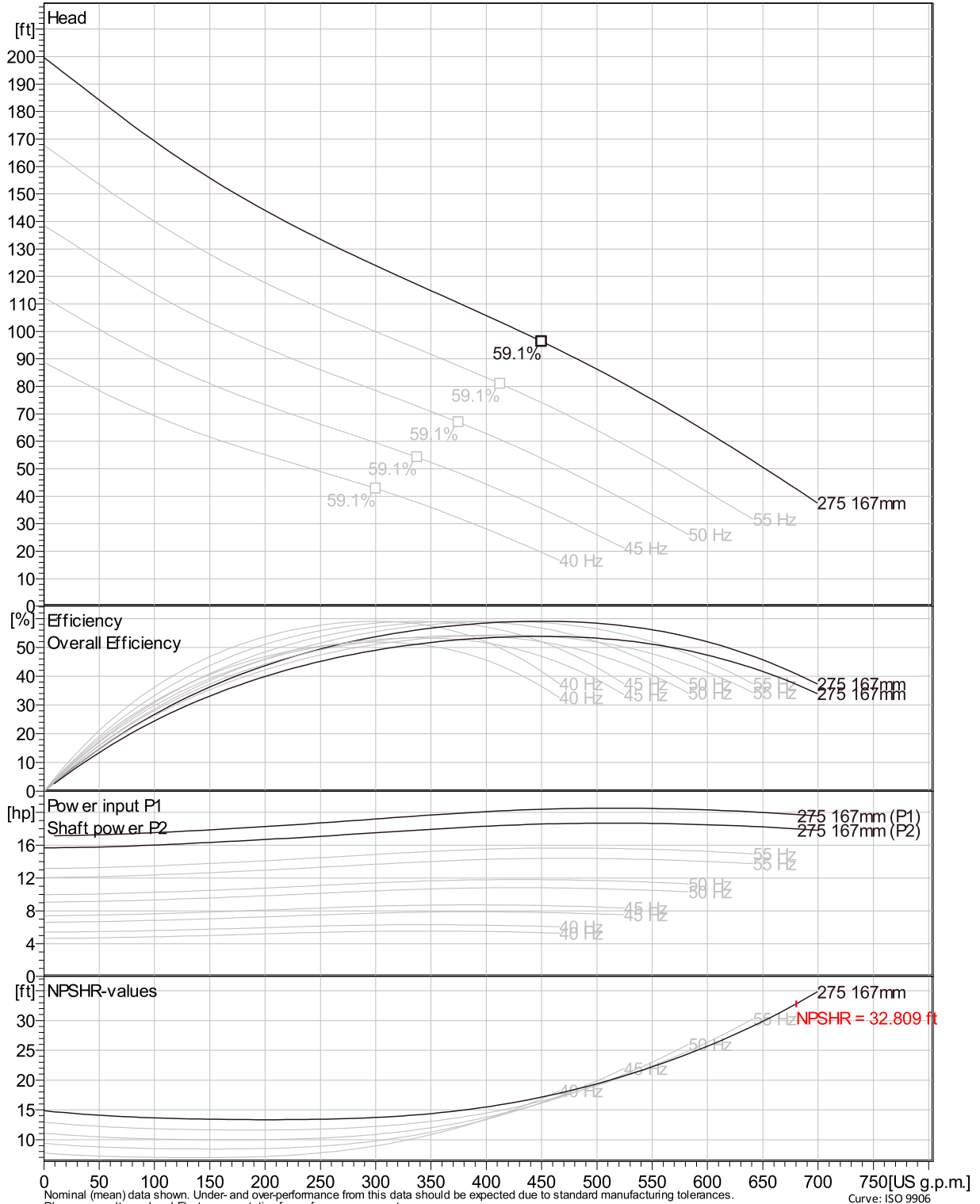


# NP 3153 SH 3~ 275

## VFD Curve



Curves according to: Water, pure, 39.2 °F, 62.42 lb/ft³, 1.6891E-5 ft²/s

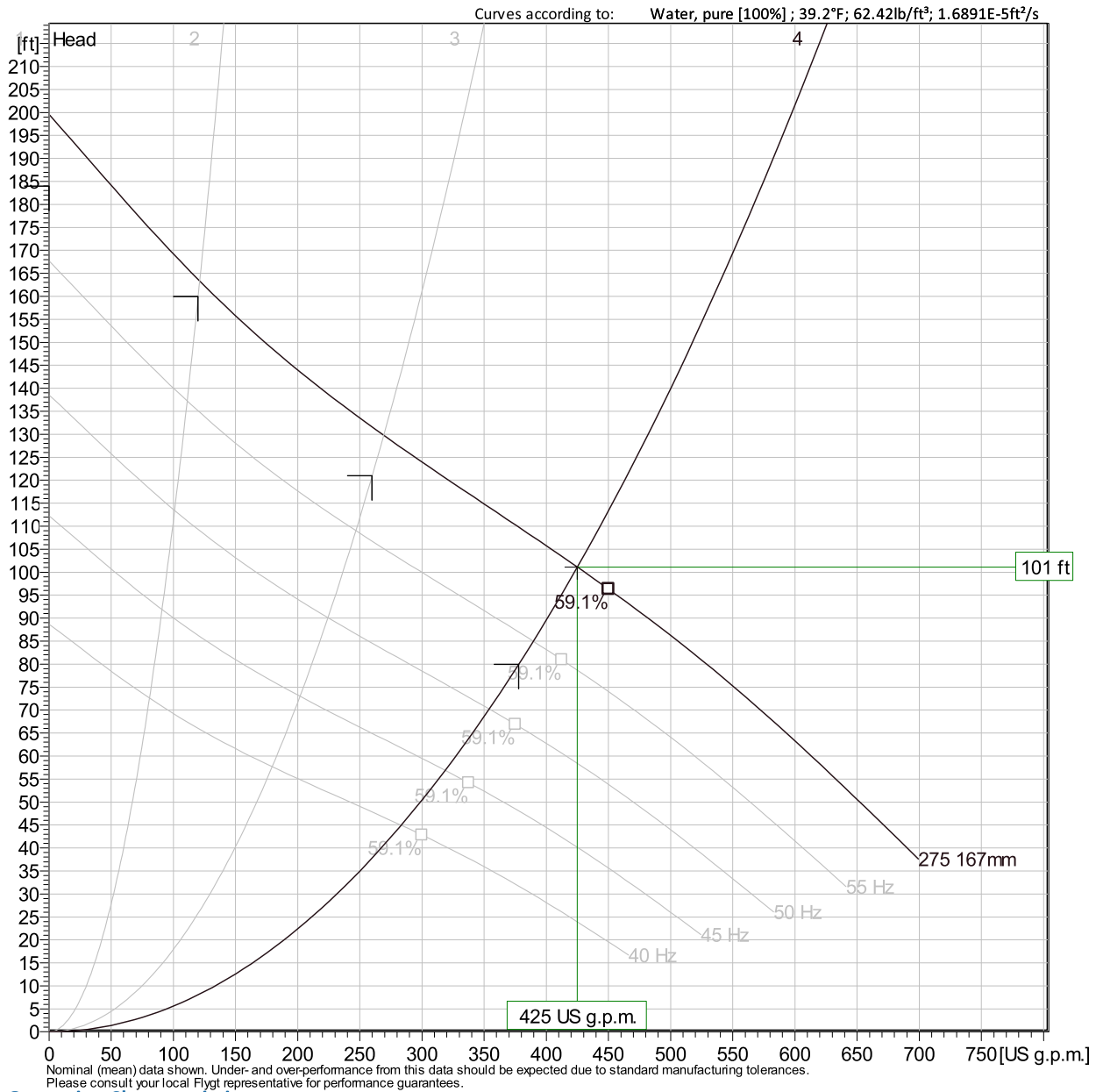


Project Xylect-21891666  
Block

Created by Dan Joyce  
Created on 2/22/2024 Last update 2/22/2024

# NP 3153 SH 3~ 275

## VFD Analysis

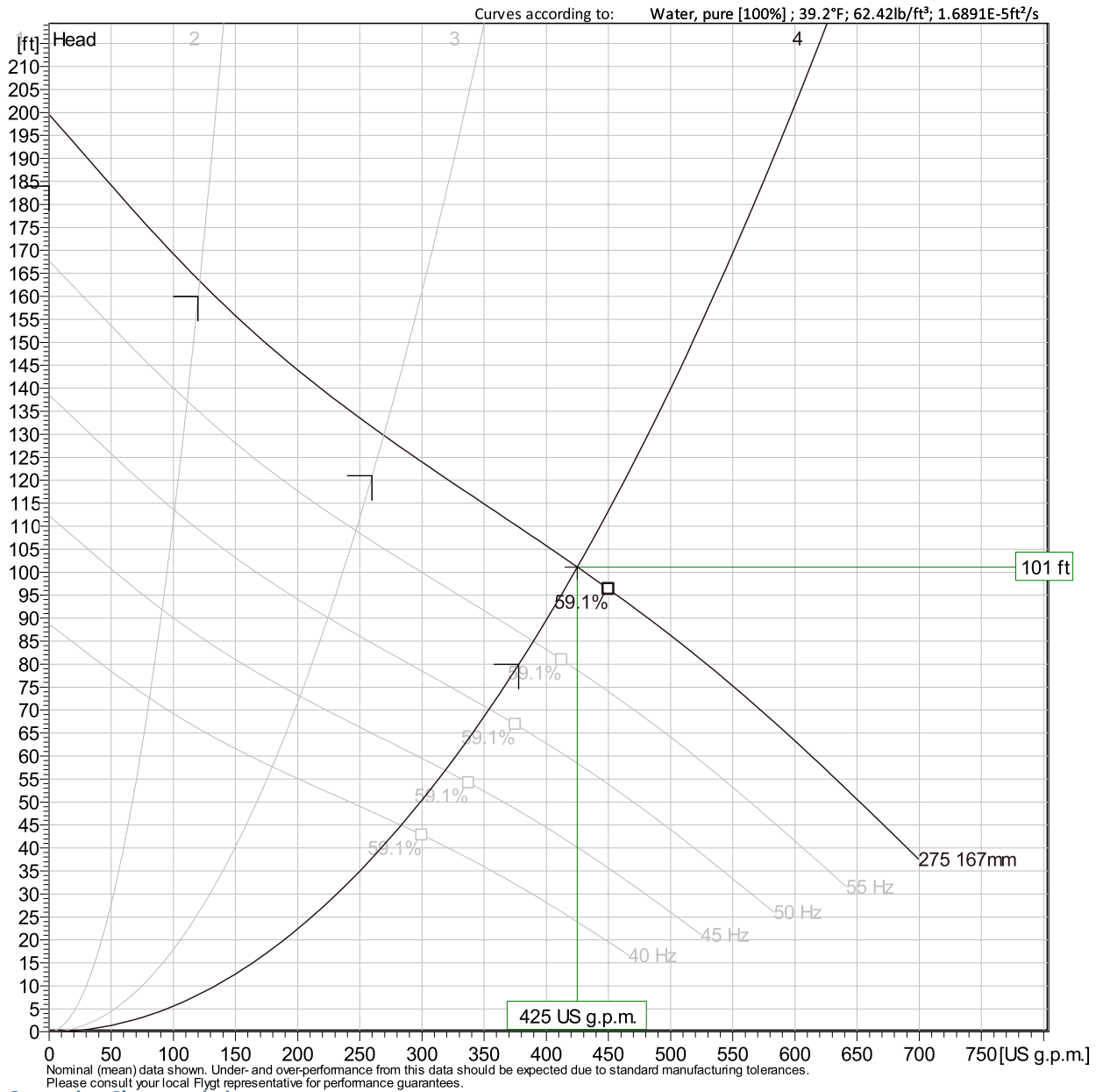


Pumps / Systems	Frequency	Flow	Head	Shaft power	Flow	Head	Shaft power	Hydr. eff.	Specific energy	NPSHre
		US g.p.m.	ft	hp	US g.p.m.	ft	hp		kWh/US MG	
4	60 Hz	425	101	18.4	425	101	18.4	58.9 %	592	16.2
4	55 Hz	390	85	14.2	390	85	14.2	58.9 %	493	14.1
4	50 Hz	354	70.2	10.7	354	70.2	10.7	58.9 %	409	12.1
4	45 Hz	319	56.9	7.78	319	56.9	7.78	58.9 %	336	10.2

<b>Project</b>	Xylect-21891666	<b>Created by</b>	Dan Joyce
<b>Block</b>		<b>Created on</b>	2/22/2024
		<b>Last update</b>	2/22/2024

# NP 3153 SH 3~ 275

## VFD Analysis



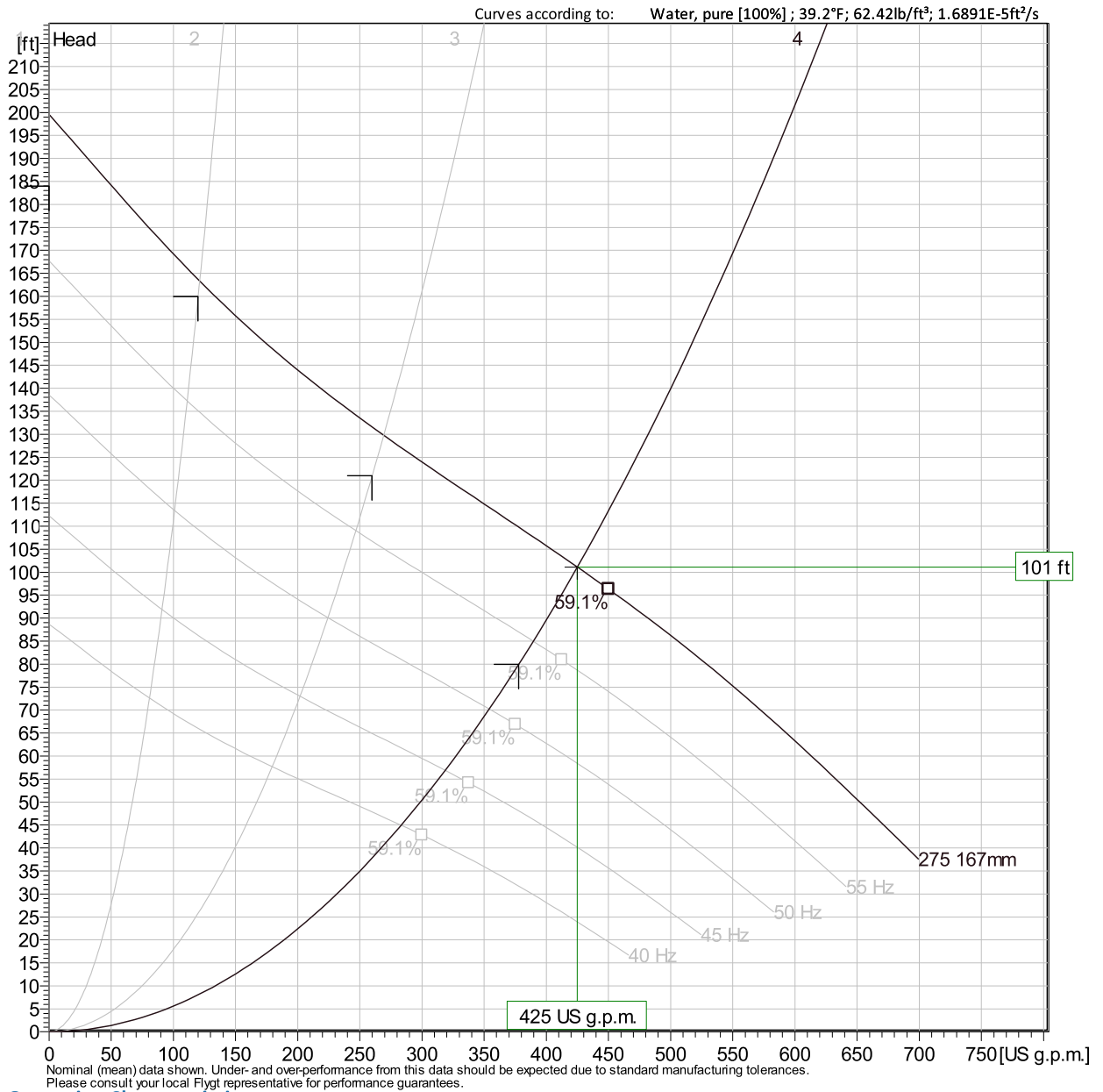
### Operating Characteristics

Pumps / Systems	Frequency	Flow	Head	Shaft power	Flow	Head	Shaft power	Hydr. eff.	Specific energy	NPSH <sub>re</sub>
		US g.p.m.	ft	hp	US g.p.m.	ft	hp		kWh/US MG	
4	40 Hz	283	44.9	5.47	283	44.9	5.47	58.9 %	274	8.49
3	60 Hz	269	130	17.2	269	130	17.2	51.3 %	872	13.5
3	55 Hz	247	109	13.3	247	109	13.3	51.3 %	728	11.7
3	50 Hz	224	90.1	9.98	224	90.1	9.98	51.3 %	605	10.1

<b>Project</b>	Xylect-21891666	<b>Created by</b>	Dan Joyce
<b>Block</b>		<b>Created on</b>	2/22/2024
		<b>Last update</b>	2/22/2024

# NP 3153 SH 3~ 275

## VFD Analysis



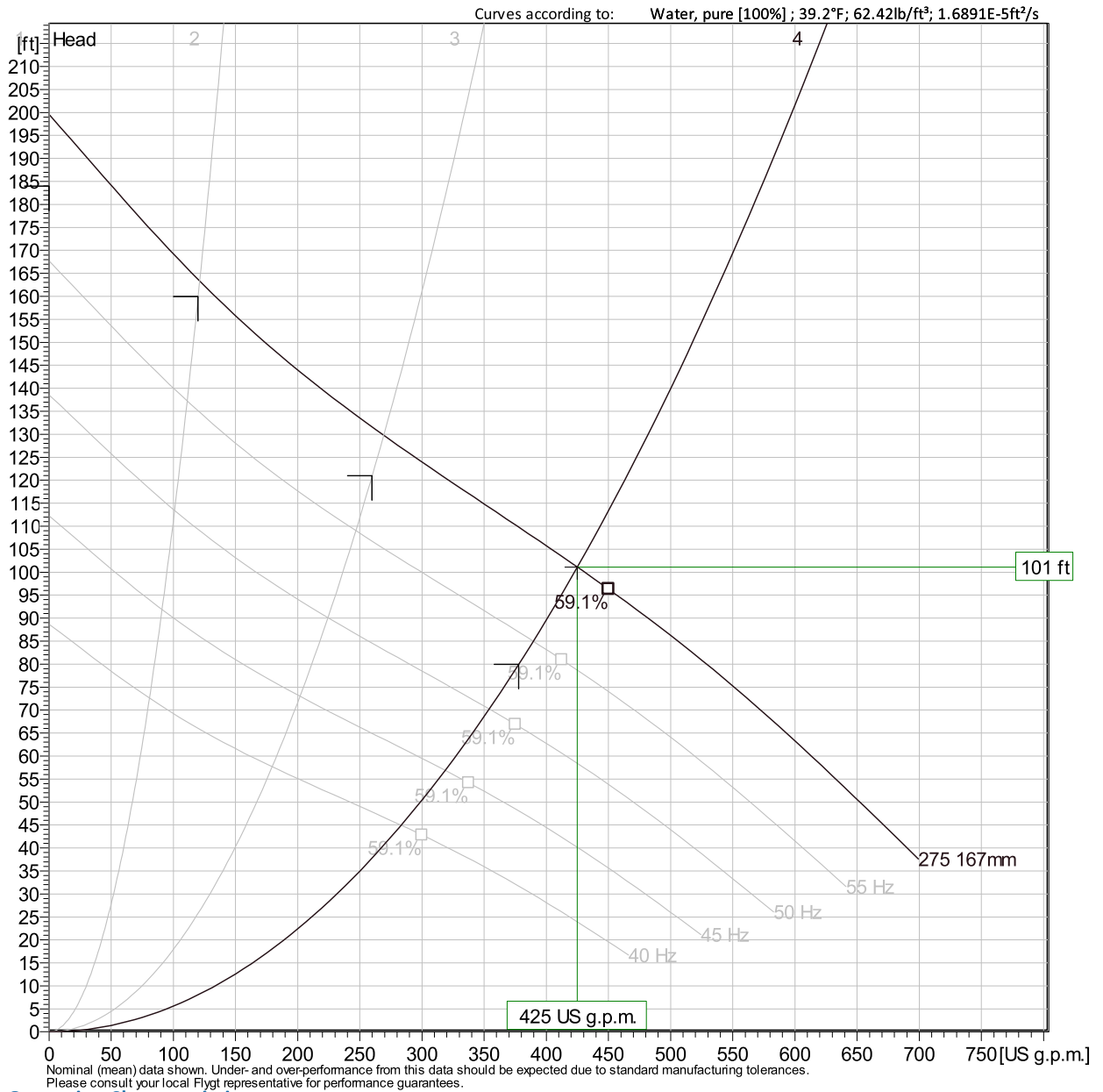
### Operating Characteristics

Pumps / Systems	Frequency	Flow	Head	Shaft power	Flow	Head	Shaft power	Hydr. eff.	Specific energy	NPSHre
		US g.p.m.	ft	hp	US g.p.m.	ft	hp		kWh/US MG	
3	45 Hz	202	73	7.27	202	73	7.27	51.3 %	498	8.52
3	40 Hz	179	57.7	5.11	179	57.7	5.11	51.3 %	407	7.06
2	60 Hz	121	163	16.1	121	163	16.1	31 %	1810	13.5
2	55 Hz	111	137	12.4	111	137	12.4	31 %	1510	11.8

<b>Project</b>	Xylect-21891666	<b>Created by</b>	Dan Joyce
<b>Block</b>		<b>Created on</b>	2/22/2024
		<b>Last update</b>	2/22/2024

# NP 3153 SH 3~ 275

## VFD Analysis

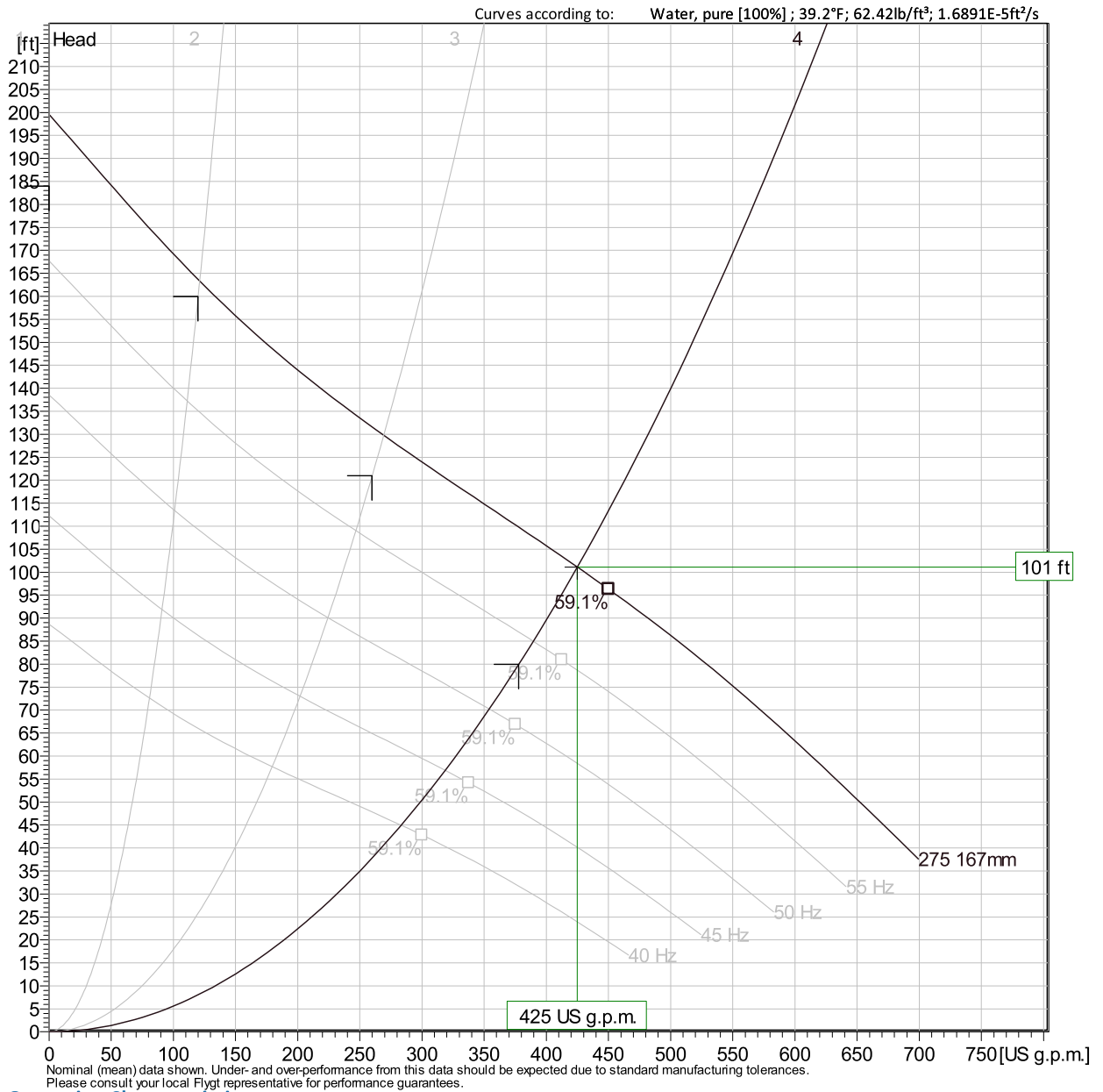


Pumps / Systems	Frequency	Flow	Head	Shaft power	Flow	Head	Shaft power	Hydr. eff.	Specific energy	NPSH <sub>re</sub>
		US g.p.m.	ft	hp	US g.p.m.	ft	hp		kWh/US MG	
2	50 Hz	101	113	9.34	101	113	9.34	31 %	1260	10.1
2	45 Hz	90.9	91.9	6.81	90.9	91.9	6.81	31 %	1040	8.55
2	40 Hz	80.8	72.6	4.78	80.8	72.6	4.78	31 %	852	7.08
1	60 Hz									

<b>Project</b>	Xylect-21891666	<b>Created by</b>	Dan Joyce
<b>Block</b>		<b>Created on</b>	2/22/2024
		<b>Last update</b>	2/22/2024

# NP 3153 SH 3~ 275

## VFD Analysis



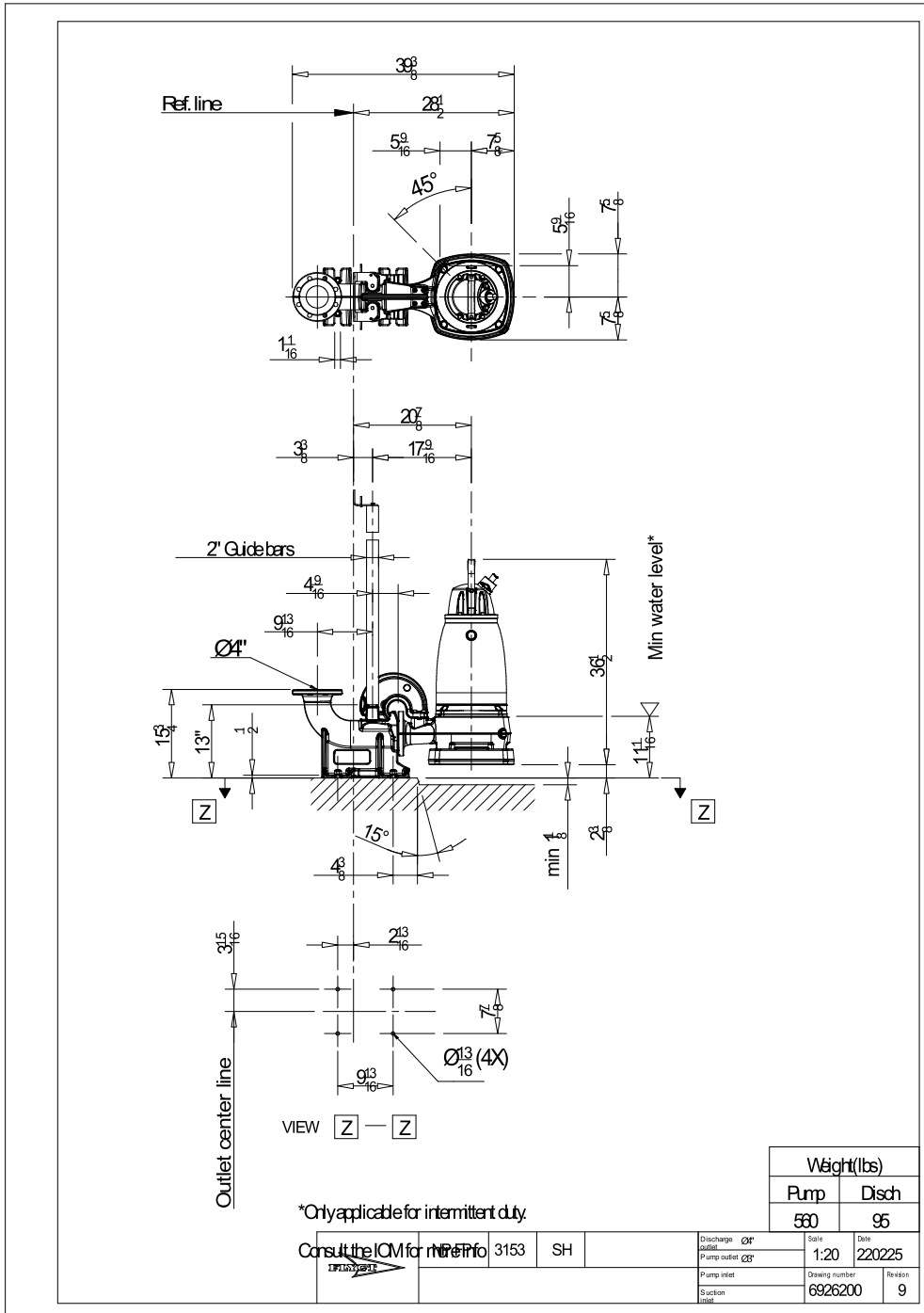
### Operating Characteristics

Pumps / Systems	Frequency	Flow US g.p.m.	Head ft	Shaft power hp	Flow US g.p.m.	Head ft	Shaft power hp	Hydr. eff.	Specific energy kWh/US MG	NPSHre ft
1	55 Hz									
1	50 Hz									
1	45 Hz									
1	40 Hz									

<b>Project</b>	Xylect-21891666	<b>Created by</b>	Dan Joyce
<b>Block</b>		<b>Created on</b>	2/22/2024
		<b>Last update</b>	2/22/2024

# NP 3153 SH 3~ 275

Dimensional drawing



Project Xylect-21891666  
Block

Created by Dan Joyce  
Created on 2/22/2024 Last update 2/22/2024