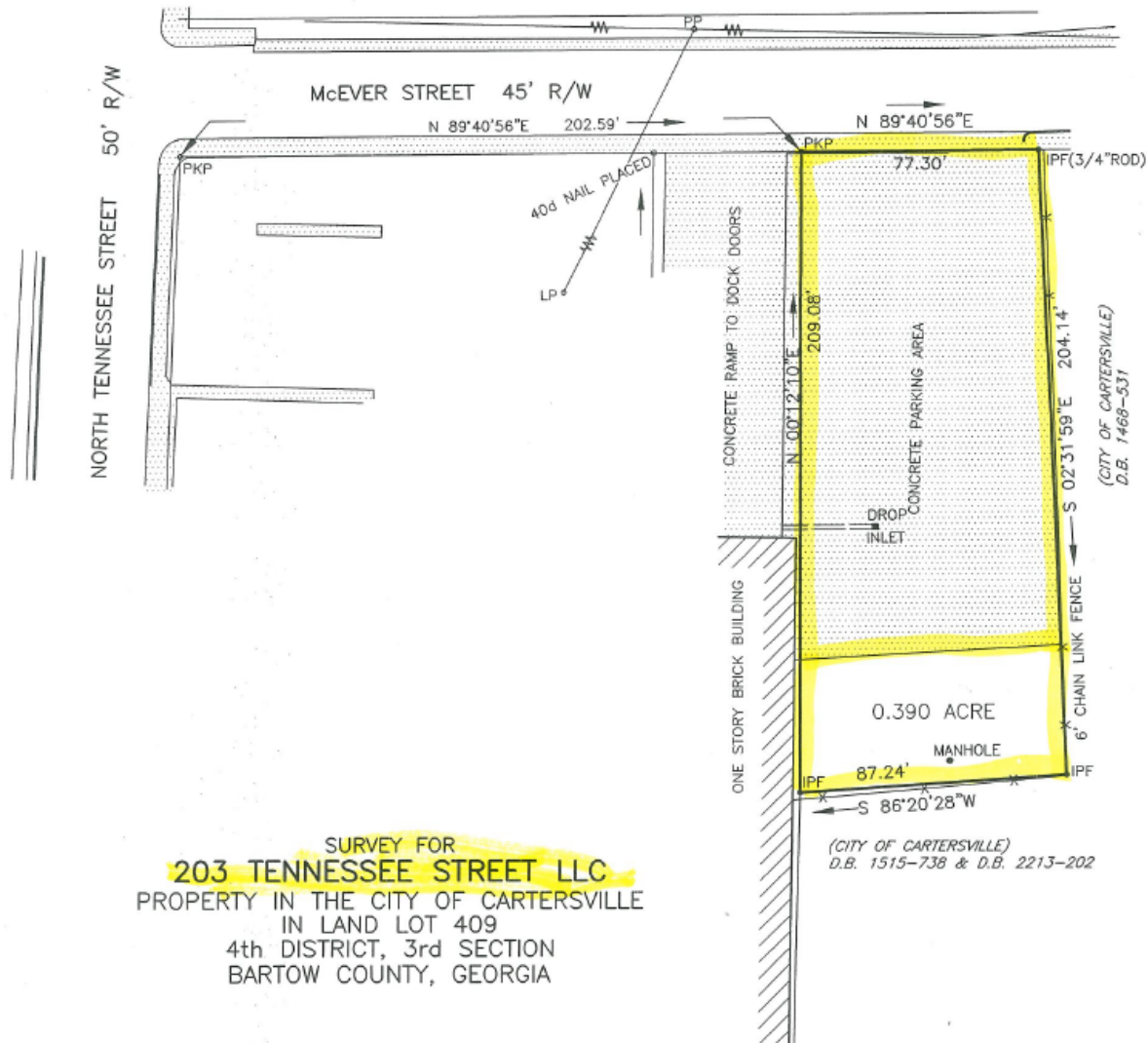


# EXHIBIT "A"



SURVEY FOR  
**203 TENNESSEE STREET LLC**  
 PROPERTY IN THE CITY OF CARTERSVILLE  
 IN LAND LOT 409  
 4th DISTRICT, 3rd SECTION  
 BARTOW COUNTY, GEORGIA

FIELD TRAVERSE:  
 CLOSURE; ONE FOOT IN 20,000 FEET  
 USING A LIETZ SET 3.  
 ANGULAR ERROR; 0°00'06"PER ANGLE  
 POINT USING A LIETZ SET 3.  
 ADJUSTED; USING THE COMPASS RULE.

SMITH & SMITH LAND SURVEYORS, P.C.  
 LAND SURVEYOR FIRM No. LSF1000133  
 2 SOUTH AVENUE, CARTERSVILLE, GA. 30120  
 PHONE 770-382-0457  
 REGISTERED LAND SURVEYOR No. 1803

R/W — RIGHT OF WAY	R — RADIUS LP — LIGHT POLE
IPP — IRON PIN PLACED	-X-X- FENCE
IPF — IRON PIN FOUND	— LAND LOT LINE
CM — CONCRETE MARKER	— CENTER LINE
PKP — PK NAIL PLACED	— POWER LINE
CH — CHORD	PP — POWER POLE
L OR A — LENGTH OF CURVE	



5082SP.CRD 6840-3.DWG  
 FLOOD INSURANCE RATE MAP 13015C0266 H  
 DATED OCT. 5, 2018 SHOWS THIS PROPERTY  
 IS NOT IN THE 100 YEAR FLOOD ZONE.

NOTE: IRON PINS ARE (1/2"RE-BAR)  
 EXCEPT AS SHOWN.

PLAT CLOSURE;  
 ONE FOOT IN  
 136,000 FEET.

JANUARY 18, 2021

