

# Cartersville Sports Complex SB BB

Cartersville,GA

## Lighting System

Pole / Fixture Summary						
Pole ID	Pole Height	Mtg Height	Fixture Qty	Luminaire Type	Load	Circuit
A1	70'	70'	2	TLC-LED-1200	2.34 kW	A
		70'	2	TLC-LED-1200	2.34 kW	B
		70'	1	TLC-LED-900	0.88 kW	A
		70'	1	TLC-LED-900	0.88 kW	B
		16'	1	TLC-BT-575	0.58 kW	A
A2	60'	60'	3	TLC-LED-900	2.64 kW	A
		16'	1	TLC-BT-575	0.58 kW	A
A3	60'	60'	3	TLC-LED-900	2.64 kW	B
		16'	1	TLC-BT-575	0.58 kW	B
B1	80'	80'	1	TLC-LED-1200	1.17 kW	A
		80'	4	TLC-LED-1500	5.64 kW	B
		80'	3	TLC-LED-1500	4.23 kW	A
		16'	2	TLC-BT-575	1.15 kW	A
		16'	2	TLC-BT-575	1.15 kW	B
B2	70'	70'	1	TLC-LED-1200	1.17 kW	A
		70'	2	TLC-LED-1500	2.82 kW	A
		70'	1	TLC-LED-900	0.88 kW	A
B3	70'	16'	2	TLC-BT-575	1.15 kW	A
		70'	2	TLC-LED-1200	2.34 kW	B
		70'	1	TLC-LED-1500	1.41 kW	B
		70'	2	TLC-LED-900	1.76 kW	B
6		16'	2	TLC-BT-575	1.15 kW	B
			<b>41</b>		<b>40.04 kW</b>	

Circuit Summary			
Circuit	Description	Load	Fixture Qty
A	Baseball 1	19.58 kW	20
B	Baseball 2	20.46 kW	21

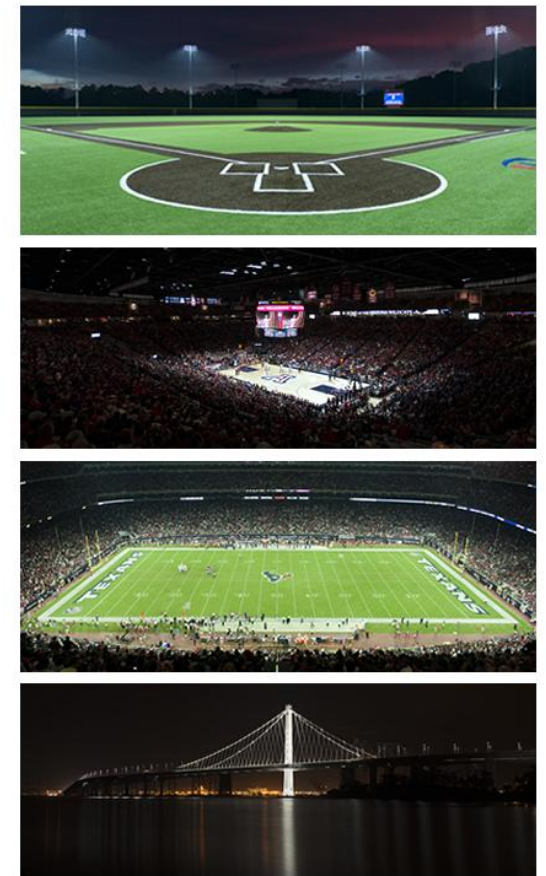
Fixture Type Summary							
Type	Source	Wattage	Lumens	L90	L80	L70	Quantity
TLC-LED-1500	LED 5700K - 75 CRI	1410W	181,000	>120,000	>120,000	>120,000	10
TLC-LED-900	LED 5700K - 75 CRI	880W	104,000	>120,000	>120,000	>120,000	11
TLC-LED-1200	LED 5700K - 75 CRI	1170W	150,000	>120,000	>120,000	>120,000	8
TLC-BT-575	LED 5700K - 75 CRI	575W	52,000	>120,000	>120,000	>120,000	12

Calculation Grid Summary								
Grid Name	Calculation Metric	Illumination					Circuits	Fixture Qty
		Ave	Min	Max	Max/Min	Ave/Min		
Baseball 1 (Infield)	Horizontal Illuminance	53.1	34.4	64.8	1.89	1.54	A	20
Baseball 1 (Outfield)	Horizontal Illuminance	30.6	17.2	41.7	2.42	1.78	A	20
Baseball 2 (Infield)	Horizontal Illuminance	53.3	34.3	64.9	1.89	1.55	B	21
Baseball 2 (Outfield)	Horizontal Illuminance	30.3	18.6	44	2.37	1.63	B	21
Bullpen - 1st Baseline	Horizontal Illuminance	27.4	22.1	33.6	1.52	1.24	B	21
Bullpen - 3rd Baseline	Horizontal Illuminance	26.9	21.6	30.9	1.43	1.24	B	21
Glare (Cd) - East Prop Line	Max Candela (by Fixture)	923	0.39	2368	6014.64	2342.04	A,B	41
Glare (Cd) - North Prop Line	Max Candela (by Fixture)	1456	1.68	6600	3932.27	867.46	A,B	41

Calculation Grid Summary								
Grid Name	Calculation Metric	Illumination					Circuits	Fixture Qty
		Ave	Min	Max	Max/Min	Ave/Min		
Spill - East Prop Line	Horizontal Illuminance	0.01	0	0.04	0.00		A,B	41
Spill - East Prop Line	Max Vertical Illuminance Metric	0.04	0	0.10	0.00		A,B	41
Spill - North Prop Line	Horizontal Illuminance	0.01	0	0.08	0.00		A,B	41
Spill - North Prop Line	Max Vertical Illuminance Metric	0.04	0	0.22	0.00		A,B	41

Single Luminaire Amperage Draw Chart							
Driver (.90 min power factor)	Max Line Amperage Per Luminaire						
	208 (60)	220 (60)	240 (60)	277 (60)	347 (60)	380 (60)	480 (60)
Single Phase Voltage							
TLC-LED-1500	8.4	7.9	7.3	6.3	5.0	4.6	3.6
TLC-LED-900	5.2	4.9	4.5	3.9	3.1	2.9	2.3
TLC-LED-1200	6.9	6.5	6.0	5.2	4.2	3.8	3.0
TLC-BT-575	3.4	3.2	2.9	2.5	2.0	1.8	1.5

## From Hometown to Professional



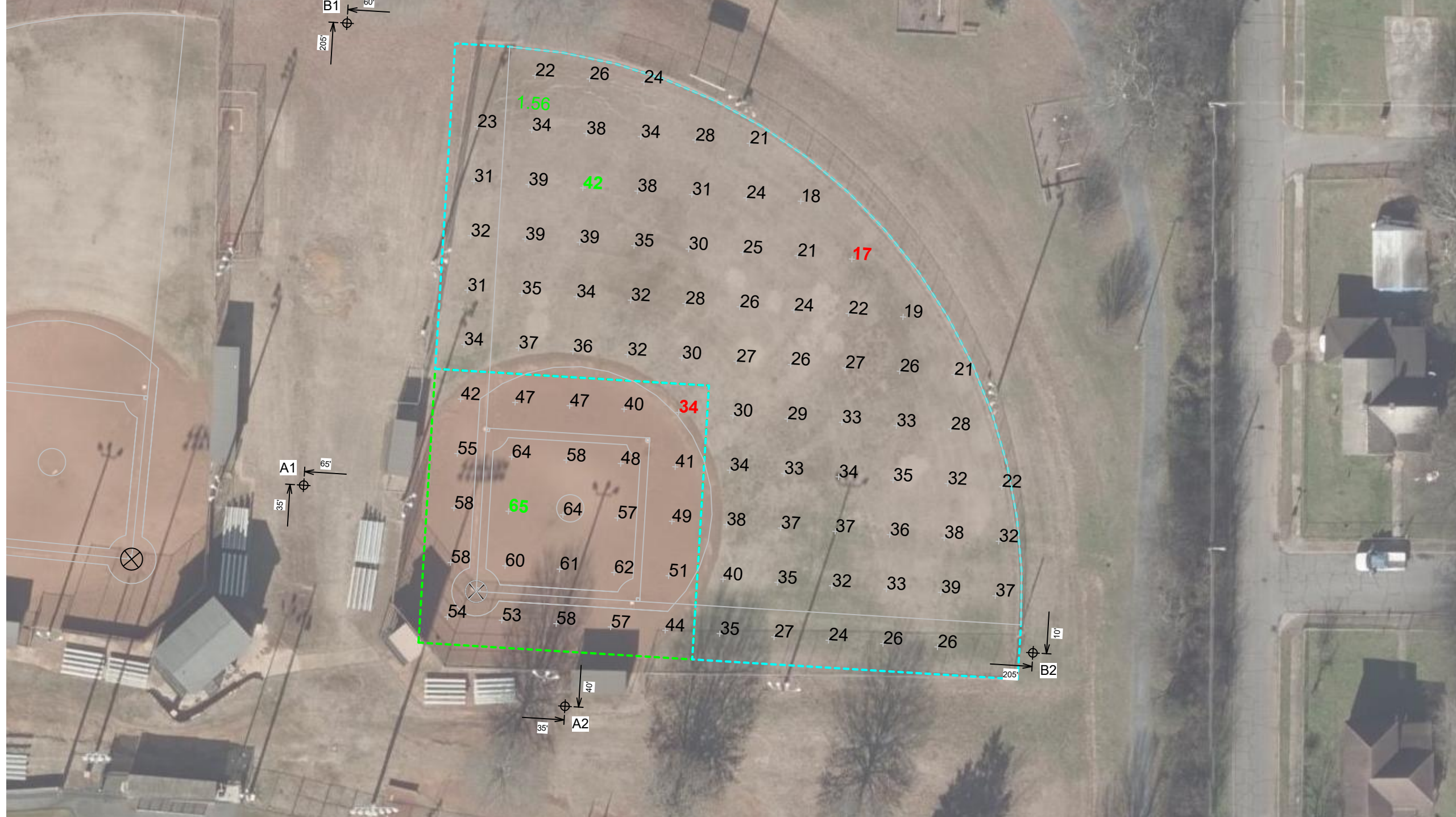
**We Make It Happen.**

# Cartersville Sports Complex SB BB

Cartersville, GA

EQUIPMENT LIST FOR AREAS SHOWN									
Pole				Luminaires					
QTY	LOCATION	SIZE	GRADE ELEVATION	MOUNTING HEIGHT	LUMINAIRE TYPE	QTY / POLE	THIS GRID	OTHER GRIDS	
1	A1	70'	-	70'	TLC-LED-900	1/1*	1	1	1
				15.5'	TLC-BT-575	1/1*	1	1	1
				70'	TLC-LED-1200	2/2*	2	2	2
1	A2	60'	-	15.5'	TLC-BT-575	1	1	0	0
				60'	TLC-LED-900	3	3	0	0
				80'	TLC-LED-1200	1	1	0	0
1	B1	80'	-	15.5'	TLC-BT-575	2/2*	2	2	2
				80'	TLC-LED-1500	3/4*	3	4	0
				70'	TLC-LED-900	1	1	0	0
				70'	TLC-LED-1200	1	1	0	0
1	B2	70'	-	15.5'	TLC-BT-575	2	2	0	0
				70'	TLC-LED-1500	2	2	0	0
				70'	TLC-LED-900	1	1	0	0
				70'	TLC-LED-1200	1	1	0	0
4	TOTALS						30	20	10

\* This structure utilizes a back-to-back mounting configuration



GRID SUMMARY	
Name:	Baseball 1
Size:	200'/200'/200' - basepath 60'
Spacing:	20.0' x 20.0'
Height:	3.0' above grade

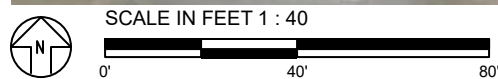
ILLUMINATION SUMMARY		
MAINTAINED HORIZONTAL FOOTCANDLES		
	Infield	Outfield
<b>Guaranteed Average:</b>	<b>50</b>	<b>30</b>
Scan Average:	53.08	30.57
Maximum:	64.8	41.7
Minimum:	34.4	17.2
Avg / Min:	1.54	1.78
<b>Guaranteed Max / Min:</b>	<b>2</b>	<b>2.5</b>
Max / Min:	1.89	2.42
UG (adjacent pts):	1.35	1.56
CU:	0.60	
No. of Points:	25	71
LUMINAIRE INFORMATION		
Applied Circuits:	A	
<b>No. of Luminaires:</b>	<b>20</b>	
Total Load:	19.58 kW	

**Guaranteed Performance:** The ILLUMINATION described above is guaranteed per your Musco Warranty document and includes a 0.95 dirt depreciation factor.

**Field Measurements:** Individual field measurements may vary from computer-calculated predictions and should be taken in accordance with IESNA RP-6-15.

**Electrical System Requirements:** Refer to Amperage Draw Chart and/or the "Musco Control System Summary" for electrical sizing.

**Installation Requirements:** Results assume ± 3% nominal voltage at line side of the driver and structures located within 3 feet (1m) of design locations.



Pole location(s) Ⓢ dimensions are relative to 0,0 reference point(s) ⊗



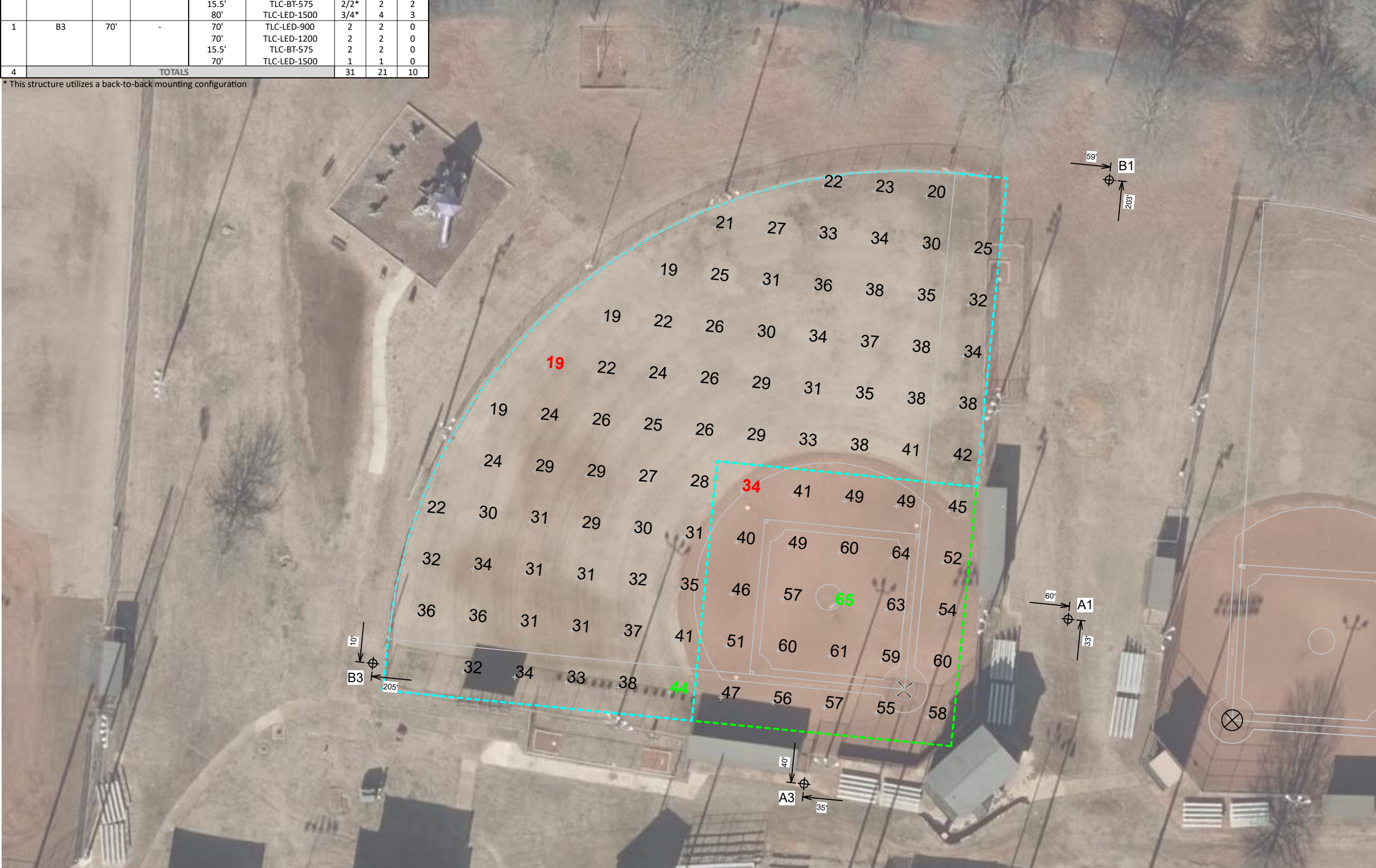
**We Make It Happen.**

Not to be reproduced in whole or part without the written consent of Musco Sports Lighting, LLC. ©1981, 2023 Musco Sports Lighting, LLC.

## ILLUMINATION SUMMARY

EQUIPMENT LIST FOR AREAS SHOWN									
Pole				Luminaires					
QTY	LOCATION	SIZE	GRADE ELEVATION	MOUNTING HEIGHT	LUMINAIRE TYPE	QTY / POLE	THIS GRID	OTHER GRIDS	
1	A1	70'	-	70'	TLC-LED-900	1/1*	1	1	1
				15.5'	TLC-BT-575	1/1*	1	1	1
				70'	TLC-LED-1200	2/2*	2	2	2
1	A3	60'	-	15.5'	TLC-BT-575	1	1	0	0
				60'	TLC-LED-900	3	3	0	0
				80'	TLC-LED-1200	1	0	1	1
1	B1	80'	-	15.5'	TLC-BT-575	2/2*	2	2	2
				80'	TLC-LED-1500	3/4*	4	3	3
				70'	TLC-LED-900	2	2	0	0
				70'	TLC-LED-1200	2	2	0	0
1	B3	70'	-	15.5'	TLC-BT-575	2	2	0	0
				70'	TLC-LED-1500	1	1	0	0
				70'	TLC-LED-1200	2	2	0	0
				70'	TLC-LED-1500	1	1	0	0
4	TOTALS						31	21	10

\* This structure utilizes a back-to-back mounting configuration



## Cartersville Sports Complex SB BB

Cartersville, GA

GRID SUMMARY	
Name:	Baseball 2
Size:	200'/200'/200' - basepath 60'
Spacing:	20.0' x 20.0'
Height:	3.0' above grade

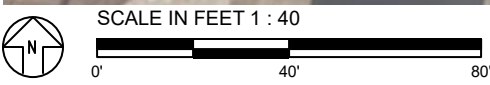
ILLUMINATION SUMMARY		
MAINTAINED HORIZONTAL FOOTCANDLES		
	Infield	Outfield
<b>Guaranteed Average:</b>	<b>50</b>	<b>30</b>
Scan Average:	53.33	30.34
Maximum:	64.9	44.0
Minimum:	34.3	18.6
Avg / Min:	1.56	1.63
<b>Guaranteed Max / Min:</b>	<b>2</b>	<b>2.5</b>
Max / Min:	1.89	2.37
UG (adjacent pts):	1.30	1.52
CU:	0.58	
No. of Points:	25	71
LUMINAIRE INFORMATION		
Applied Circuits:	B	
<b>No. of Luminaires:</b>	<b>21</b>	
Total Load:	20.46 kW	

**Guaranteed Performance:** The ILLUMINATION described above is guaranteed per your Musco Warranty document and includes a 0.95 dirt depreciation factor.

**Field Measurements:** Individual field measurements may vary from computer-calculated predictions and should be taken in accordance with IESNA RP-6-15.

**Electrical System Requirements:** Refer to Amperage Draw Chart and/or the "Musco Control System Summary" for electrical sizing.

**Installation Requirements:** Results assume ± 3% nominal voltage at line side of the driver and structures located within 3 feet (1m) of design locations.



ENGINEERED DESIGN By: D.Alexander · File #209062B · 09-Mar-23

Pole location(s) ⊕ dimensions are relative to 0,0 reference point(s) ⊗



Not to be reproduced in whole or part without the written consent of Musco Sports Lighting, LLC. ©1981, 2023 Musco Sports Lighting, LLC.

### ILLUMINATION SUMMARY

EQUIPMENT LIST FOR AREAS SHOWN									
Pole				Luminaires					
QTY	LOCATION	SIZE	GRADE ELEVATION	MOUNTING HEIGHT	LUMINAIRE TYPE	QTY / POLE	THIS GRID	OTHER GRIDS	
1	A1	70'	-	70'	TLC-LED-900	1/1*	1	1	
				15.5'	TLC-BT-575	1/1*	1	1	
				70'	TLC-LED-1200	2/2*	2	2	
1	A3	60'	-	15.5'	TLC-BT-575	1	1	0	
				60'	TLC-LED-900	3	3	0	
				80'	TLC-LED-1200	1	0	1	
1	B1	80'	-	15.5'	TLC-BT-575	2/2*	2	2	
				80'	TLC-LED-1500	3/4*	4	3	
				70'	TLC-LED-900	2	2	0	
1	B3	70'	-	70'	TLC-LED-1200	2	2	0	
				70'	TLC-LED-1200	2	2	0	
				15.5'	TLC-BT-575	2	2	0	
				70'	TLC-LED-1500	1	1	0	
4	TOTALS						31	21	10

\* This structure utilizes a back-to-back mounting configuration



GRID SUMMARY	
Name:	Bullpen - 1st Baseline
Size:	200'/200'/200' - basepath 60'
Spacing:	10.0' x 10.0'
Height:	3.0' above grade

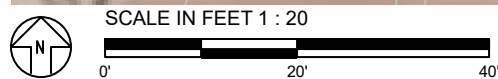
ILLUMINATION SUMMARY	
MAINTAINED HORIZONTAL FOOTCANDLES	
	Entire Grid
Scan Average:	27.44
Maximum:	33.6
Minimum:	22.1
Avg / Min:	1.24
Max / Min:	1.52
UG (adjacent pts):	1.22
CU:	0.01
No. of Points:	12
LUMINAIRE INFORMATION	
Applied Circuits:	B
No. of Luminaires:	21
Total Load:	20.46 kW

**Guaranteed Performance:** The ILLUMINATION described above is guaranteed per your Musco Warranty document and includes a 0.95 dirt depreciation factor.

**Field Measurements:** Individual field measurements may vary from computer-calculated predictions and should be taken in accordance with IESNA RP-6-15.

**Electrical System Requirements:** Refer to Amperage Draw Chart and/or the "Musco Control System Summary" for electrical sizing.

**Installation Requirements:** Results assume ± 3% nominal voltage at line side of the driver and structures located within 3 feet (1m) of design locations.



Pole location(s) ⊕ dimensions are relative to 0,0 reference point(s) ⊗



**We Make It Happen.**

# Cartersville Sports Complex SB BB

Cartersville, GA

EQUIPMENT LIST FOR AREAS SHOWN									
Pole				Luminaires					
QTY	LOCATION	SIZE	GRADE ELEVATION	MOUNTING HEIGHT	LUMINAIRE TYPE	QTY / POLE	THIS GRID	OTHER GRIDS	
1	A1	70'	-	70'	TLC-LED-900	1/1*	1	1	
				15.5'	TLC-BT-575	1/1*	1	1	
				70'	TLC-LED-1200	2/2*	2	2	
1	A3	60'	-	15.5'	TLC-BT-575	1	1	0	
				60'	TLC-LED-900	3	3	0	
				80'	TLC-LED-1200	1	0	1	
1	B1	80'	-	15.5'	TLC-BT-575	2/2*	2	2	
				80'	TLC-LED-1500	3/4*	4	3	
				70'	TLC-LED-900	2	2	0	
1	B3	70'	-	70'	TLC-LED-1200	2	2	0	
				70'	TLC-LED-1200	2	2	0	
				15.5'	TLC-BT-575	2	2	0	
				70'	TLC-LED-1500	1	1	0	
4	TOTALS						31	21	10

\* This structure utilizes a back-to-back mounting configuration



GRID SUMMARY	
Name:	Bullpen - 3rd Baseline
Size:	200'/200'/200' - basepath 60'
Spacing:	10.0' x 10.0'
Height:	3.0' above grade

ILLUMINATION SUMMARY	
MAINTAINED HORIZONTAL FOOTCANDLES	
	Entire Grid
Scan Average:	26.87
Maximum:	30.9
Minimum:	21.6
Avg / Min:	1.24
Max / Min:	1.43
UG (adjacent pts):	1.37
CU:	0.01
No. of Points:	12
LUMINAIRE INFORMATION	
Applied Circuits:	B
No. of Luminaires:	21
Total Load:	20.46 kW

**Guaranteed Performance:** The ILLUMINATION described above is guaranteed per your Musco Warranty document and includes a 0.95 dirt depreciation factor.

**Field Measurements:** Individual field measurements may vary from computer-calculated predictions and should be taken in accordance with IESNA RP-6-15.

**Electrical System Requirements:** Refer to Amperage Draw Chart and/or the "Musco Control System Summary" for electrical sizing.

**Installation Requirements:** Results assume ± 3% nominal voltage at line side of the driver and structures located within 3 feet (1m) of design locations.



Pole location(s) ⊕ dimensions are relative to 0,0 reference point(s) ⊗



**We Make It Happen.**

# Cartersville Sports Complex SB BB

Cartersville, GA

GRID SUMMARY	
Name:	Spill - North Prop Line
Spacing:	30.0'
Height:	3.0' above grade

ILLUMINATION SUMMARY	
HORIZONTAL FOOTCANDLES	
Scan Average:	Entire Grid 0.0146
Maximum:	0.078
Minimum:	0.000
No. of Points:	33
LUMINAIRE INFORMATION	
Applied Circuits:	A, B
No. of Luminaires:	41
Total Load:	40.04 kW

**Guaranteed Performance:** The ILLUMINATION described above is guaranteed per your Musco Warranty document.

**Field Measurements:** Individual field measurements may vary from computer-calculated predictions and should be taken in accordance with IESNA RP-6-15.

**Electrical System Requirements:** Refer to Amperage Draw Chart and/or the "Musco Control System Summary" for electrical sizing.

**Installation Requirements:** Results assume ± 3% nominal voltage at line side of the driver and structures located within 3 feet (1m) of design locations.



Pole location(s) ⊕ dimensions are relative to 0,0 reference point(s) ⊗



**We Make It Happen.**

Not to be reproduced in whole or part without the written consent of Musco Sports Lighting, LLC. ©1981, 2023 Musco Sports Lighting, LLC.

# Cartersville Sports Complex SB BB

Cartersville, GA

GRID SUMMARY	
Name:	Spill - North Prop Line
Spacing:	30.0'
Height:	3.0' above grade

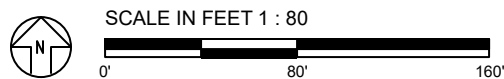
ILLUMINATION SUMMARY	
MAX VERTICAL FOOTCANDLES	
Scan Average:	Entire Grid 0.0431
Maximum:	0.218
Minimum:	0.000
No. of Points:	33
LUMINAIRE INFORMATION	
Applied Circuits:	A, B
No. of Luminaires:	41
Total Load:	40.04 kW

**Guaranteed Performance:** The ILLUMINATION described above is guaranteed per your Musco Warranty document.

**Field Measurements:** Individual field measurements may vary from computer-calculated predictions and should be taken in accordance with IESNA RP-6-15.

**Electrical System Requirements:** Refer to Amperage Draw Chart and/or the "Musco Control System Summary" for electrical sizing.

**Installation Requirements:** Results assume ± 3% nominal voltage at line side of the driver and structures located within 3 feet (1m) of design locations.



Pole location(s) ⊕ dimensions are relative to 0,0 reference point(s) ⊗



**We Make It Happen.**

# Cartersville Sports Complex SB BB

Cartersville, GA

GRID SUMMARY	
Name:	Glare (Cd) - North Prop Line
Spacing:	30.0'
Height:	5.0' above grade

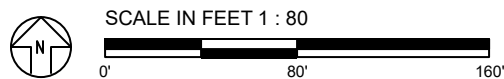
ILLUMINATION SUMMARY	
CANDELA (PER FIXTURE)	
Scan Average:	Entire Grid 1455.6010
Maximum:	6599.529
Minimum:	1.678
No. of Points:	33
LUMINAIRE INFORMATION	
Applied Circuits:	A, B
No. of Luminaires:	41
Total Load:	40.04 kW

**Guaranteed Performance:** The ILLUMINATION described above is guaranteed per your Musco Warranty document.

**Field Measurements:** Individual field measurements may vary from computer-calculated predictions and should be taken in accordance with IESNA RP-6-15.

**Electrical System Requirements:** Refer to Amperage Draw Chart and/or the "Musco Control System Summary" for electrical sizing.

**Installation Requirements:** Results assume ± 3% nominal voltage at line side of the driver and structures located within 3 feet (1m) of design locations.



Pole location(s) ⊕ dimensions are relative to 0,0 reference point(s) ⊗



**We Make It Happen.**



# Cartersville Sports Complex SB BB

Cartersville, GA

GRID SUMMARY	
Name:	Spill - East Prop Line
Spacing:	30.0'
Height:	3.0' above grade

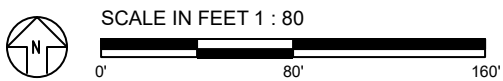
ILLUMINATION SUMMARY	
HORIZONTAL FOOTCANDLES	
Scan Average:	Entire Grid 0.0145
Maximum:	0.044
Minimum:	0.000
No. of Points:	16
LUMINAIRE INFORMATION	
Applied Circuits:	A, B
No. of Luminaires:	41
Total Load:	40.04 kW

**Guaranteed Performance:** The ILLUMINATION described above is guaranteed per your Musco Warranty document.

**Field Measurements:** Individual field measurements may vary from computer-calculated predictions and should be taken in accordance with IESNA RP-6-15.

**Electrical System Requirements:** Refer to Amperage Draw Chart and/or the "Musco Control System Summary" for electrical sizing.

**Installation Requirements:** Results assume ± 3% nominal voltage at line side of the driver and structures located within 3 feet (1m) of design locations.



Pole location(s) ⊕ dimensions are relative to 0,0 reference point(s) ⊗



**We Make It Happen.**

Not to be reproduced in whole or part without the written consent of Musco Sports Lighting, LLC. ©1981, 2023 Musco Sports Lighting, LLC.

# Cartersville Sports Complex SB BB

Cartersville, GA

GRID SUMMARY	
Name:	Spill - East Prop Line
Spacing:	30.0'
Height:	3.0' above grade

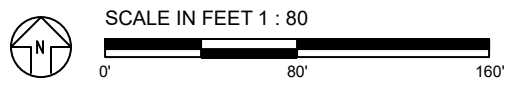
ILLUMINATION SUMMARY	
MAX VERTICAL FOOTCANDLES	
Scan Average:	Entire Grid 0.0362
Maximum:	0.099
Minimum:	0.000
No. of Points:	16
LUMINAIRE INFORMATION	
Applied Circuits:	A, B
No. of Luminaires:	41
Total Load:	40.04 kW

**Guaranteed Performance:** The ILLUMINATION described above is guaranteed per your Musco Warranty document.

**Field Measurements:** Individual field measurements may vary from computer-calculated predictions and should be taken in accordance with IESNA RP-6-15.

**Electrical System Requirements:** Refer to Amperage Draw Chart and/or the "Musco Control System Summary" for electrical sizing.

**Installation Requirements:** Results assume ± 3% nominal voltage at line side of the driver and structures located within 3 feet (1m) of design locations.



Pole location(s) ⊕ dimensions are relative to 0,0 reference point(s) ⊗



**We Make It Happen.**

Not to be reproduced in whole or part without the written consent of Musco Sports Lighting, LLC. ©1981, 2023 Musco Sports Lighting, LLC.

# Cartersville Sports Complex SB BB

Cartersville, GA

GRID SUMMARY	
Name:	Glare (Cd) - East Prop Line
Spacing:	30.0'
Height:	5.0' above grade

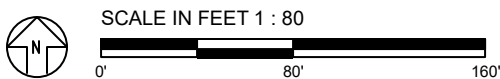
ILLUMINATION SUMMARY	
CANDELA (PER FIXTURE)	
Scan Average:	Entire Grid 922.7623
Maximum:	2367.521
Minimum:	0.394
No. of Points:	16
LUMINAIRE INFORMATION	
Applied Circuits:	A, B
No. of Luminaires:	41
Total Load:	40.04 kW

**Guaranteed Performance:** The ILLUMINATION described above is guaranteed per your Musco Warranty document.

**Field Measurements:** Individual field measurements may vary from computer-calculated predictions and should be taken in accordance with IESNA RP-6-15.

**Electrical System Requirements:** Refer to Amperage Draw Chart and/or the "Musco Control System Summary" for electrical sizing.

**Installation Requirements:** Results assume ± 3% nominal voltage at line side of the driver and structures located within 3 feet (1m) of design locations.



Pole location(s) ⊕ dimensions are relative to 0,0 reference point(s) ⊗



**We Make It Happen.**

Not to be reproduced in whole or part without the written consent of Musco Sports Lighting, LLC. ©1981, 2023 Musco Sports Lighting, LLC.

# Cartersville Sports Complex SB BB

Cartersville, GA

## EQUIPMENT LAYOUT

### INCLUDES:

- Baseball 1
- Baseball 2

**Electrical System Requirements:** Refer to Amperage Draw Chart and/or the "Musco Control System Summary" for electrical sizing.

**Installation Requirements:** Results assume ± 3% nominal voltage at line side of the driver and structures located within 3 feet (1m) of design locations.

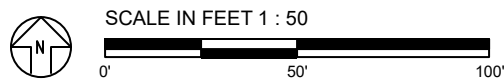
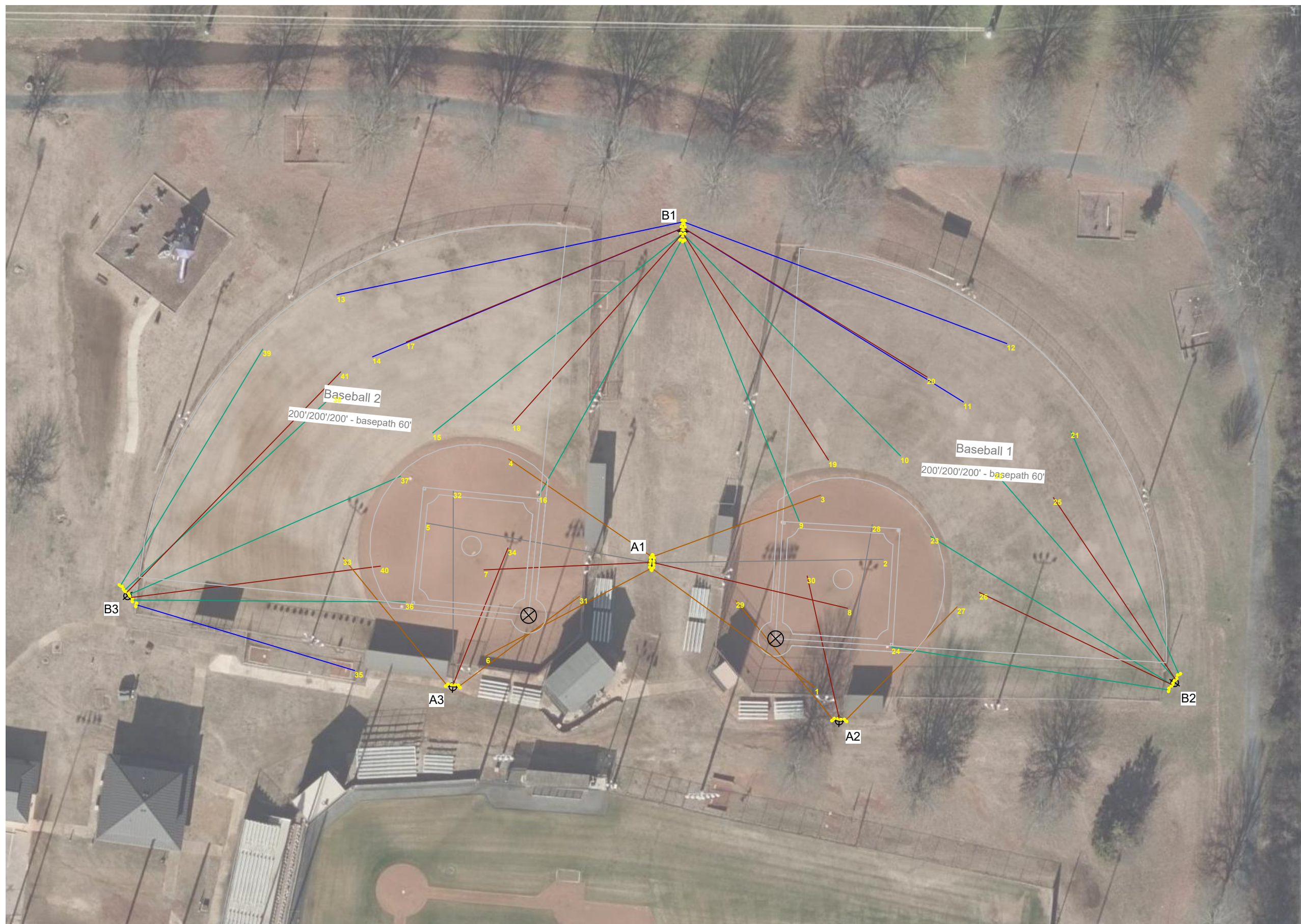
## EQUIPMENT LIST FOR AREAS SHOWN

QTY	LOCATION	Pole		Luminaires		QTY / POLE	
		CLASS	GRADE ELEVATION	MOUNTING HEIGHT	LUMINAIRE TYPE		
1	A1	LSS70B	-	70'	TLC-LED-900	1/1*	
				15.5'	TLC-BT-575	1/1*	
				70'	TLC-LED-1200	2/2*	
2	A2-A3	LSS60AA	-	15.5'	TLC-BT-575	1	
				60'	TLC-LED-900	3	
				80'	TLC-LED-1200	1	
1	B1	LSS80B	-	80'	TLC-LED-1200	1	
				15.5'	TLC-BT-575	2/2*	
				80'	TLC-LED-1500	3/4*	
1	B2	LSS70A	-	70'	TLC-LED-900	1	
				70'	TLC-LED-1200	1	
				15.5'	TLC-BT-575	2	
				70'	TLC-LED-1500	2	
1	B3	LSS70A	-	70'	TLC-LED-900	2	
				70'	TLC-LED-1200	2	
				15.5'	TLC-BT-575	2	
				70'	TLC-LED-1500	1	
6	TOTALS						41

\* This structure utilizes a back-to-back mounting configuration

## SINGLE LUMINAIRE AMPERAGE DRAW CHART

Driver (.90 min power factor)	Line Amperage Per Luminaire (max draw)						
	208 (60)	220 (60)	240 (60)	277 (60)	347 (60)	380 (60)	480 (60)
Single Phase Voltage	208 (60)	220 (60)	240 (60)	277 (60)	347 (60)	380 (60)	480 (60)
TLC-LED-1500	8.4	7.9	7.3	6.3	5.0	4.6	3.6
TLC-LED-900	5.2	4.9	4.5	3.9	3.1	2.9	2.3
TLC-LED-1200	6.9	6.5	6.0	5.2	4.2	3.8	3.0
TLC-BT-575	3.4	3.2	2.9	2.5	2.0	1.8	1.5



Pole location(s) ⚡ dimensions are relative to 0,0 reference point(s) ⊗



**We Make It Happen.**

Not to be reproduced in whole or part without the written consent of Musco Sports Lighting, LLC. ©1981, 2023 Musco Sports Lighting, LLC.