

Houston County, Texas

401 E. Goliad, Ste 201 • Crockett, Texas 75835
936-544-3255



BILL OF SALE

DATE: 10/25/2022

SELLER: HOUSTON COUNTY, TEXAS

SELLERS MAILING ADDRESS: 401 E GOLIAD STE 204, CROCKETT, TX 75835

BUYER: CITY OF CROCKETT, TEXAS

BUYERS MAILING ADDRESS: 200 North 5th Street Crockett, TX 75835

CONSIDERATION: SIXTY THOUSAND (\$60,000.00)

TRANSFERRED PROPERTIES: 2003 CAT 140H MOTORGRADER {0669}

TOTAL DUE: \$60,000.00

Seller does hereby grant, sell and transfer full ownership of above said property to the buyer. Seller certifies that said property is free from all encumbrances, taxes, fees and liens.

Buyer accepts full liability for the said property, damages and any third-party liability incurred from the said property use from the date of the sale.

SELLER

HOUSTON COUNTY, TEXAS

BY: _____

JIM LOVELL, COUNTY JUDGE

BUYER

CITY OF CROCKETT, TEXAS

BY: _____

JOHN ANGERSTEIN, CITY MANAGER

Date of Transfer: _____

COUNTY OFFICIALS

Jim Lovell,
County Judge

Gary Lovell,
Precinct 1 Commissioner

Willie Kitchen,
Precinct 2 Commissioner

Gene Stokes,
Precinct 3 Commissioner

Jimmy Henderson,
Precinct 4 Commissioner

Terri Meadows,
County Clerk

Daphne Session,
County Attorney

Janis Omelina,
County Treasurer

Laronica Smith,
Tax Assessor/Collector

Randy Hargrove,
County Sheriff

Clyde Black,
Justice of the Peace Pree 1

Morris Luker,
Constable Pree 1

Ronnie Jordan,
Justice of the Peace Pree 2

Kenneth Smith,
Constable Pree 2

Sarah Clark,
County Court at Law Judge

Donna Kaspar,
District Attorney

Carolyn Rains,
District Clerk

Melissa Jeter,
County Auditor

Mark Calhoon,
District Judge 3rd District

Pam Foster Fletcher,
District Judge 349th District

Charles Hodges,
County Surveyor

Heath Murff,
Fire Marshal/EMC

Sheila Johnson,
Grants Administrator

Milton Ladnier,
Veteran Service Officer

Cynthia Lum,
Elections Administrator

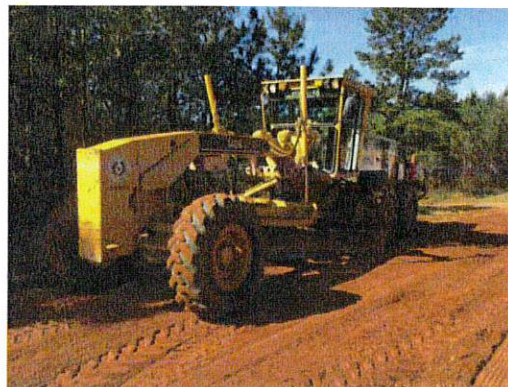
Carl Johnson,
Facilities Administrator



2003 CATERPILLAR 140HNA MOTOR GRADERS

INSPECTION DETAILS

Inspection Type	Trade
Inspection #	2764973
Inspection Status	Inspected
Created	01/27/22 11:07:48
Updated	01/27/22 11:32:08
Created By	Timmerman, Brad W.
Inspector	Timmerman, Brad W.
Salesperson	Ford, Hadyn H.
Serial #	APM00669
SMU / Hours	9,340
Location	Crockett , TX, United States



CLIENT DETAILS

Name	Willie
Company	Houston County Pct 2
Address	
City	
State	Texas
Country	United States
Postal Code	
Email	
Phone	

FEATURES

- | | | |
|-----------------------|---------------------|----------------------|
| • 14' MOLDBOARD | • AIR CONDITIONER | • AM FM CD RADIO |
| • CIRCLE CLUTCH | • DIFFERENTIAL LOCK | • EROPS |
| • LIGHTING | • MIRRORS | • PUSHBLOCK |
| • RIPPER, MULTI-SHANK | • THROTTLE LOCK | • TRANSMISSION GUARD |

CONDITION

●●● Good

●● Fair

● Poor

Approved Repair

GENERAL APPEARANCE

●●● Battery Box

●●● Bumper

●●● Cab or Canopy

●●● Crankcase Guard /
Transmission Guard

●● Decals
Scratched

●●● Engine Enclosures

●●● Front Frame Welds

●●● Fuel Tank

●●● Grab Irons

●●● Hood

●● Paint
Scratched some

●●● Plastic (Exterior)

●●● Radiator Grill

●●● Rear Frame Welds

●●● Sheet Metal

●●● Steps / Ladder

YES Cleaning Required

SAFETY ITEMS

●●● Back Up Alarm

●●● Horn

● Parking Brake - SAFETY ITEMS
Does not work

●●● Safety Locks / Pins

●●● Seat Belt / Date

YES ROPS

YES Safety Decals In Place / Legible

GAUGES, OPERATOR STATION, CONSOLE

●●● Air Conditioner - GAUGES,
OPERATOR STATION, CONSOLE

●●● Dash Console

●●● Door Latches / Seals

●●● EMS Panel / Warnings

●●● Floor Boards / Mats

●●● Gauges

●●● Glass/Mirrors
Left mirror cracked

●●● Headliner

●●● Interior Lights

●●● Meter Replaced / Working

●●● Monitoring Panel / Display

●●● Radio Type & Condition

●●● Seat Cushion / Arm Rest

●●● Seat Suspension Type /
Condition

●●● Switches

●●● Windshield Wipers

ENGINE

●●● Air Cleaners

●●● Anti-Freeze Color / Level

●●● Engine Supports

●●● Exhaust / Muffler / Stack

●●● Fuel Injection System

●●● Governor / Control

●●● Operating Condition - ENGINE

●●● Turbocharger / Blower

NO Blow By

NO Compression in Radiator

YES Fluid Levels OK?

NO Knocking

NO Oil Leaks

NO Water in Oil

Oil Pressure (H/L/N)
Normal

Smoke Color (B/D/L/W)
None

COOLING SYSTEM

●●● Belts / Pulleys - COOLING
SYSTEM

●●● Coolers

●●● Fan

●●● Fan Drive / Type

●●● Hoses

●●● Radiator

●●● Shroud / Guards

●●● Water Pump

NO Leaks

ELECTRICAL, STARTING AND CHARGING SYSTEM

●●● Alternator

●●● Batteries / Cables

●●● Starter

●●● Wiring

●● Work Lights
One front cab light not working

NO Active Codes

YES Signal Lights

TRANSMISSION

●●● Case - TRANSMISSION

●●● Controls - TRANSMISSION

●●● Cooler

●●● Lines / Fittings - TRANSMISSION

●●● Operating Condition -
TRANSMISSION

●●● Pump - TRANSMISSION

●●● Seals

●●● Temp / Pressure Gauges

●●● Transmission - Forward Shifts

●●● Transmission - Reverse Shifts

●●● Valves

NO Leaks - TRANSMISSION

YES Powershift

NO Transmission - Noisy

STEERING

●●● Articulate P & B

●●● King Pins

●●● Lines / Fittings

●●● Steering Column / Tilt

●●● Steering Cylinder

●●● Steering Frame

●●● Steering Linkage

●●● Steering Operating Condition

●●● Steering Pump

●●● Steering Valve

●●● Tie Rods / Rod Ends

●●● Wheel / Joystick

●●● Wheel Lean Cylinder - STEERING

BRAKE

●●● Brake Linkage

●●● Control Valve

●●● Lines

● Parking Brake Operation
Does not work

●●● Pedal

●●● Service Brake Operation

DRIVECHAIN / TANDEMS

●●● Differential

●●● Differential Lock / Operation

●●● Drivetrain / Tandem Leaks

●●● Oscillating Hubs / Oil Level

●●● Planetary

●●● Tandem Housing / Drive Chains

●●● Wheel Lugs & Rims

HYDRAULICS

●●● Circle Drive Box

●●● Circle Side Shift Cylinder

●●● Cylinder Mounts / Pins

●●● Hydraulic Lines / Fittings

●●● Hydraulic Pump

●●● Hydraulic Valves

●●● Lift Cylinders

●●● Linkage

●●● Operating Condition -
HYDRAULICS

●●● Pump Drive Shaft

●●● Saddle Pin / Actuator

●●● Side Shift Cylinder

●●● Tip Cylinder

NO Leaks - HYDRAULICS

BLADE

●●● Circle A Frame

●●● Circle Frame

●●● Cutting Edge

●●● Cylinder Balls / Caps

●●● Face / Moldboard

●●● Ring Gear

●●● Saddle

●●● Tip Bracket Pivots / Bearings

RIPPER

●●● Beam

●●● Brackets / Studs

●●● Cylinders

●●● Frame

●●● Lines / Fittings - RIPPER

●●● Pins / Bushings

●●● Shanks / Ripper (GET)

TIRES

	Make / Serial#	Tread Depth in 1/32"	% Life Remaining	Recapped	Tread Cuts/Chunks	Side Cuts Section
Left Center	Maxam	24	60			
Left Front	Firestone	30	85			
Left Rear	Maxam	28	70			
Right Center	Deestone	28	85			
Right Front	Firestone	26	75			
Right Rear	Deestone	30	90			

YES Bias

Tire Size - TIRES
14.00-24