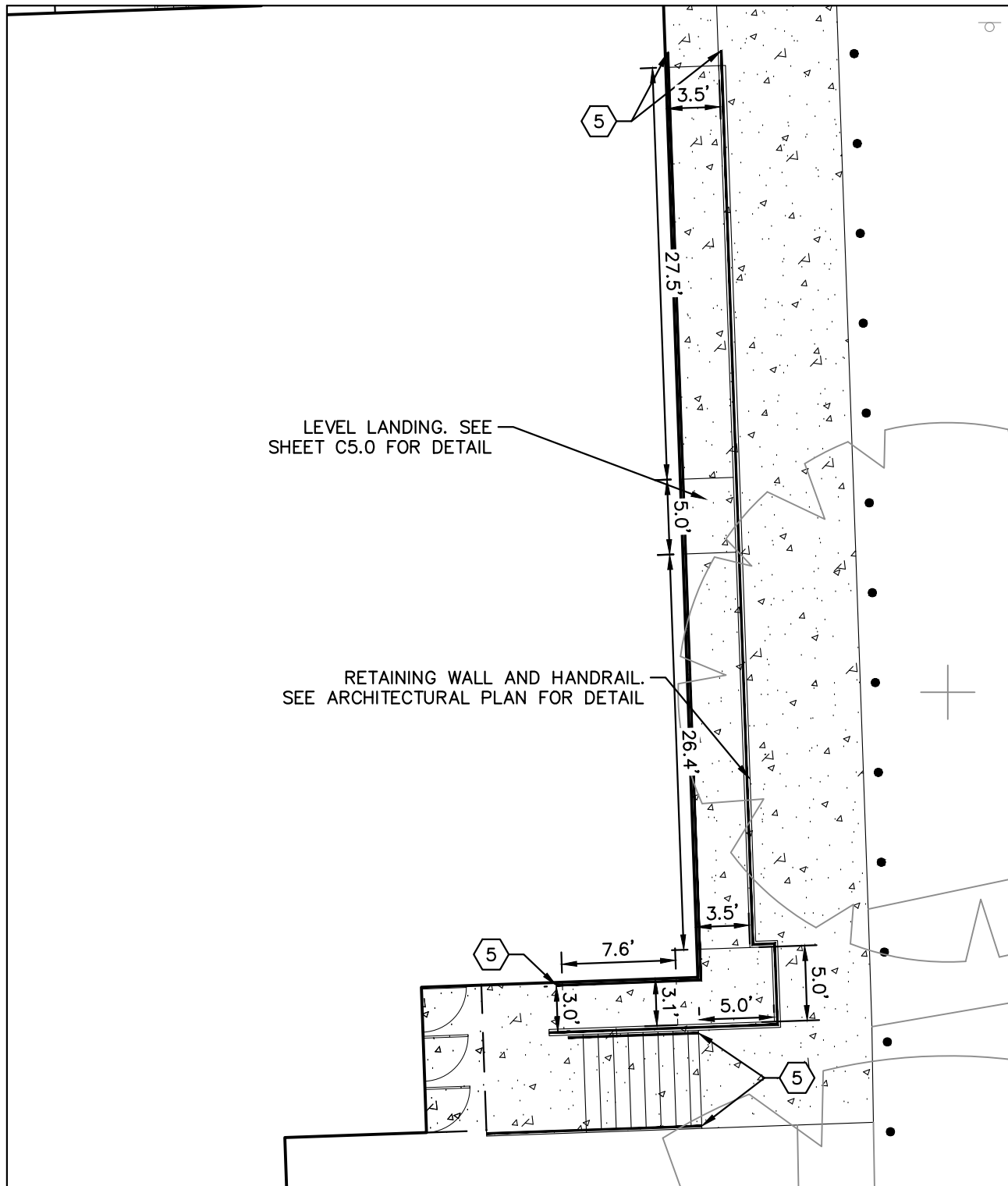
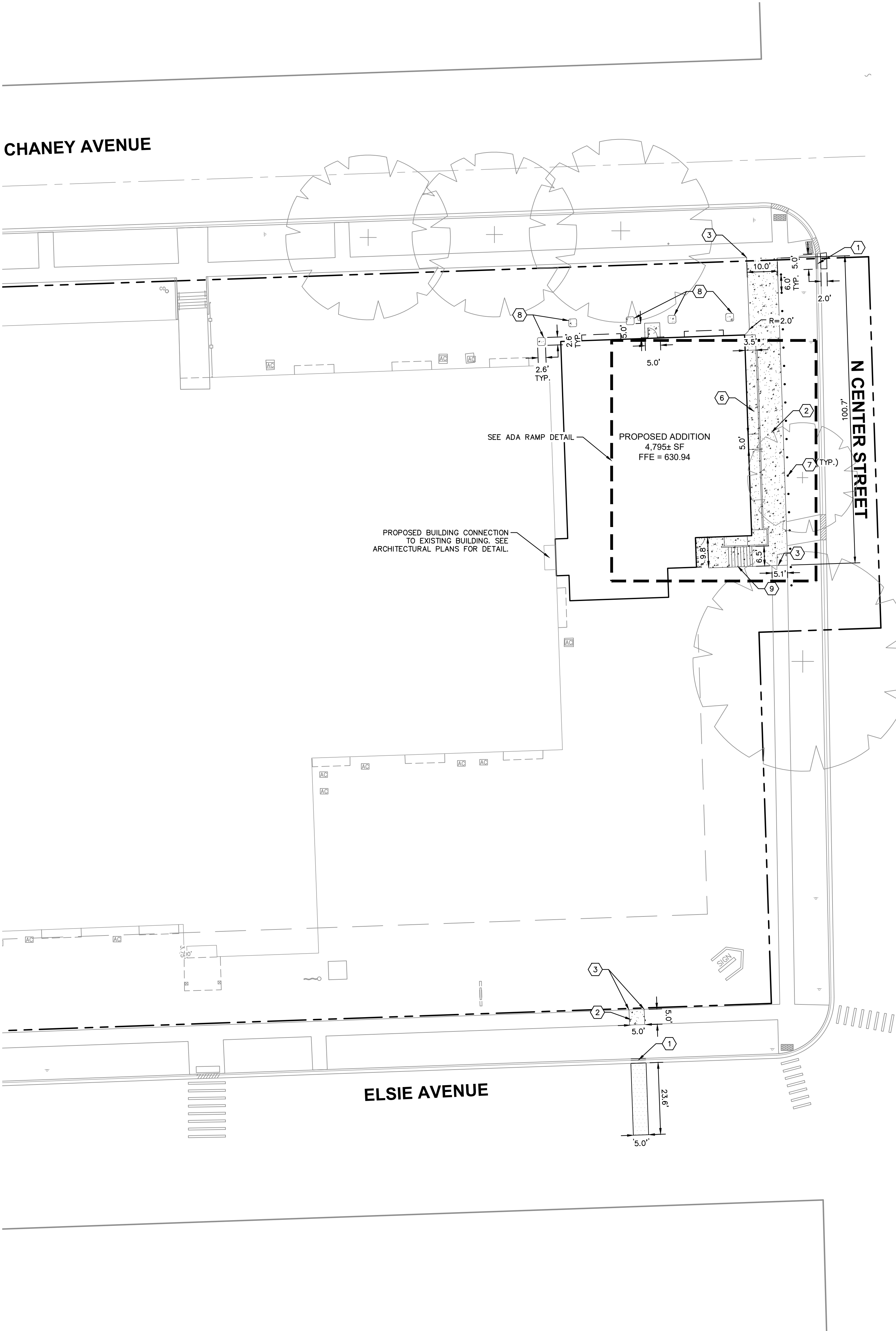
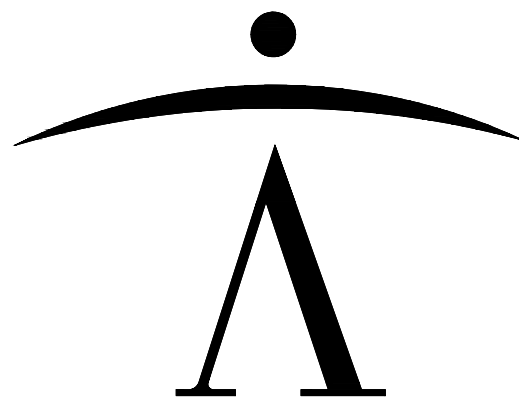
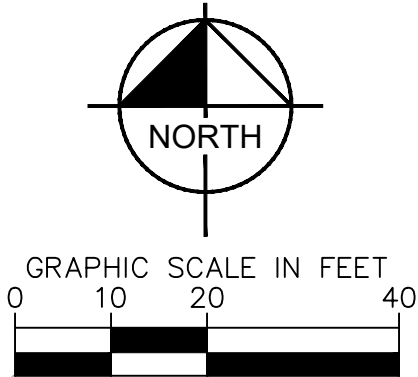


Drawing name: K:\CHS_LDE\168144022_Newman_Chaney Monge_Hill Crest_IL\2 Design\CAD\PlanSheets\C3.0-SITE PLAN.dwg C3.0 Mar 27, 2024 11:04am By Joseph.DaLoia
This document, together with the concepts and designs presented herein, as an instrument of service, is intended only for the specific purpose and client for which it was prepared. Reuse of and improper reliance on this document without written authorization and adoption by Kimley-Horn and Associates, Inc. shall be without liability to Kimley-Horn and Associates, Inc.



ADA DETAIL
1" = 10'



GENERAL NOTES

- ALL DIMENSIONS REFER TO THE FACE OF CURB UNLESS OTHERWISE NOTED.
- BUILDING DIMENSIONS ARE TO THE OUTSIDE FACE OF BUILDING UNLESS OTHERWISE NOTED.
- REFER TO ARCHITECTURAL AND STRUCTURAL PLANS TO VERIFY ALL BUILDING DIMENSIONS.
- RADII ADJACENT TO PARKING STALL AND NOT DIMENSIONED ON THIS PLAN SHALL BE 3'-FEET, TYPICAL.
- REFER TO ARCHITECTURAL PLANS FOR MONUMENT SIGN DETAILS. SEE MEP PLANS FOR SITE ELECTRICAL DRAWINGS.
- ALL PROPOSED ON-SITE STRIPING SHALL BE PAINTED UNLESS OTHERWISE NOTED.

KEY NOTES

- B6.12 CONCRETE CURB AND GUTTER, TYP. (SEE SHEET C7.0)
- CONCRETE SIDEWALK, TYP. (SEE SHEET C7.0)
- CONNECT TO EXISTING PAVEMENT, SIDEWALK, CURB, TYP.
- NOT USED
- HANDRAILS (SEE ARCHITECTURE PLANS FOR DETAILS)
- SIDEWALK RAMP (SEE ARCHITECTURAL AND STRCUTURAL PLANS FOR DETAILS)
- BOLLARD, TYP. (SEE DETAILS)
- ACCU UNIT (SEE MECHANICAL PLANS FOR DETAILS)
- STAIRS (SEE ARCHITECTURAL PLANS FOR DETAILS)

PAVING AND CURB LEGEND

- | | |
|--|---|
| | STANDARD DUTY ASPHALT PAVEMENT
SEE CONSTRUCTION DETAILS FOR PAVEMENT SECTION |
| | CONCRETE SIDEWALK
SEE CONSTRUCTION DETAILS FOR PAVEMENT SECTION |
| | STANDARD PITCH CONCRETE CURB AND GUTTER |

newman architecture
13437 Redberry Cr. plain Field, Illinois 60544
(630) 420-1600 FAX (630) 420-1987 newmanarchitecture.com

Kimley»Horn

© 2024 KIMLEY-HORN AND ASSOCIATES, INC.
4201 WINFIELD ROAD, SUITE 600
WARRENVILLE, IL 60555
PHONE: 630-487-5550
WWW.KIMLEY-HORN.COM

PROJECT NAME:

CONSTRUCTION DOCUMENTS

**CHANEY-MONGE
SCHOOL**

**2024-2025
BUILDING ADDITION**

FOR
SCHOOL DISTRICT 88
400 ELSIE AVENUE
CREST HILL, ILLINOIS 60403

ENGINEER'S CERTIFICATION:



Date of Expiration: 11-30-25

LICENSE: Illinois Professional Design Firm
License No. 184002012-0006

EXPIRES: 2025-04-30

LICENSE: Illinois Registration No. 062-072176

EXPIRES: 2025-11-30

Signature Date 2024-03-27

Issue / Revision:

No.	Date	Description
-	2024/03/26	ISSUED FOR BIDDING & PERMIT

DRAWING TITLE:

SITE PLAN

PROJECT NO.: 168144022 DATE: 2024-03-27

C3.0