



**Capital
Development
Board**
Building a Better Illinois



STATE OF ILLINOIS
JB PRITZKER, GOVERNOR
JIM UNDERWOOD, EXECUTIVE DIRECTOR

BOARD MEMBERS
Eileen Rhodes, Chair
Pam McDonough, Vice Chair
Saul Morse
Beverly Potts
Glyn M. Ramage
Paul Roldan
David Sidney

May 25, 2023

Andres Padua
Deputy General Counsel
Illinois Capital Development Board
555 W Monroe St, 8th fl
Chicago, IL 60661

Maura A. Rigoni, AICP
Senior Planner
Robinson Engineering
1700 South Park Ave
South Holland, IL 60473

RE: CDB Proj. #291-000-018, Construct New Crime Lab

Ms. Rigoni –

It was a pleasure speaking with you yesterday. Thank you for your question about the applicability of the City of Crest Hill’s zoning ordinances to the Illinois State Police project referenced above (“project”). We have reviewed the City of Crest Hill’s Zoning Ordinance and found that these codes are not applicable to the work performed by the State of Illinois in this project.

Generally, municipal codes cannot be enforced on entities engaged in a State of Illinois construction project. See City of Joliet v. Snyder, 317 Ill. App. 3d 940 (1st Dist. 2000) and Board of Trustees of the University of Illinois v. City of Chicago, 317 Ill. App. 3d 569 (2000). In various decisions, the Illinois Court of Appeals has held that municipalities in Illinois cannot enforce their local codes on the State of Illinois where the State is pursuing a statewide mandate, such as the above-referenced project. Id. There are, however, several exceptions to this rule, including situations in which federal or state laws authorize municipalities to enforce specific municipal codes. We have not found any exceptions with regard to the zoning codes in question here. If you have any reason to think otherwise, please contact the undersigned to discuss.

Please bear in mind that the State and the entities working on our behalf will communicate and coordinate with the City on all issues the City deems necessary. If you have any questions or concerns, please do not hesitate to contact me.

Sincerely,

CAPITAL DEVELOPMENT BOARD

Office of Legal Counsel

Andres Padua

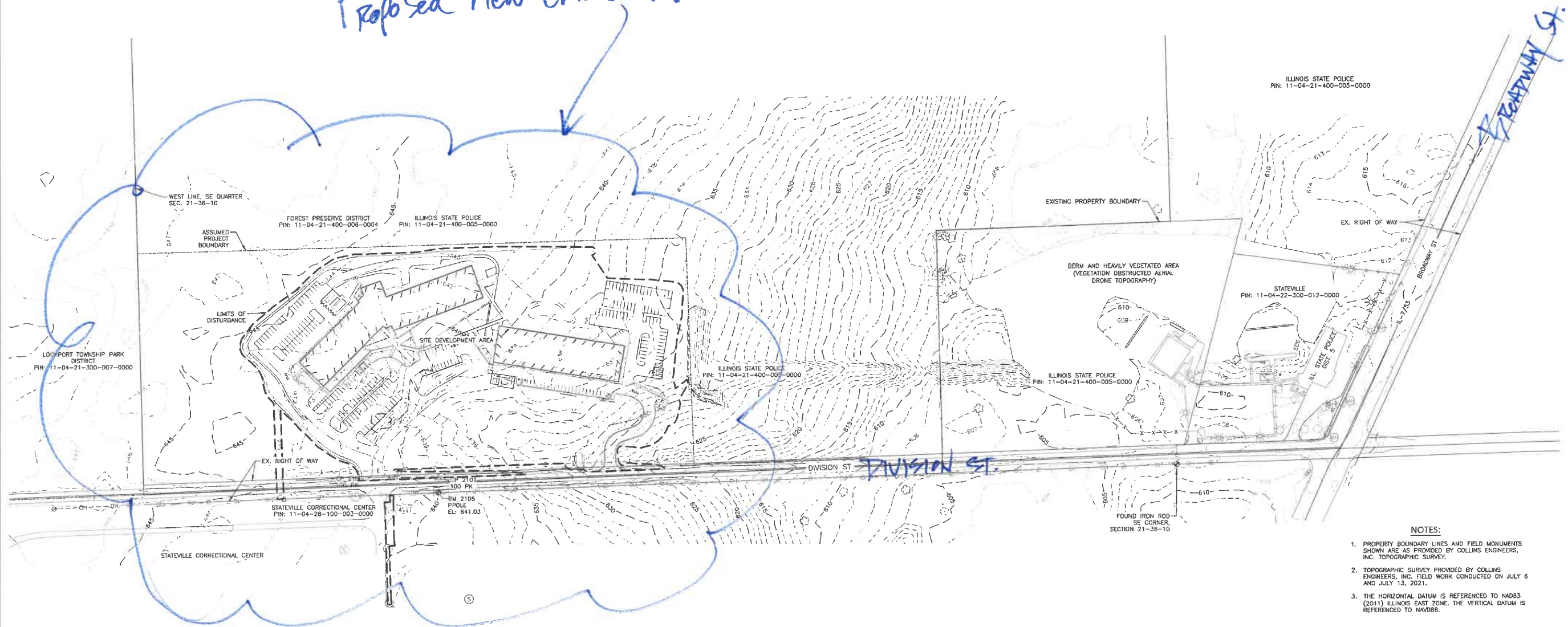
Deputy General Counsel

cc: Amy Romano, CDB
John Zimmerman, ISP

Chima Uwanamodo, CDB
Aaron Session, ISP

Natasia McDade, CDB

Proposed new crime lab location

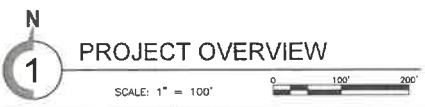


- NOTES:
1. PROPERTY BOUNDARY LINES AND FIELD MONUMENTS SHOWN ARE AS PROVIDED BY COLLINS ENGINEERS, INC. TOPOGRAPHIC SURVEY.
 2. TOPOGRAPHIC SURVEY PROVIDED BY COLLINS ENGINEERS, INC. FIELD WORK CONDUCTED ON JULY 6 AND JULY 13, 2021.
 3. THE HORIZONTAL DATUM IS REFERENCED TO NAD83 (2011) ILLINOIS EAST ZONE. THE VERTICAL DATUM IS REFERENCED TO NAVD88.

SITE BENCHMARKS

BENCHMARK ID	DESCRIPTION	LOCATION	ELEVATION
BM 2105	POWER POLE	SOUTH SIDE OF W DIVISION STREET EAST OF STATEVILLE ENTRANCE	641.03
CP 2100	PK NAIL	NORTH SIDE OF W DIVISION ST. WEST OF STATEVILLE ENTRANCE	642.64
CP 2101	PK NAIL	NORTH SIDE OF W DIVISION ST. EAST OF STATEVILLE ENTRANCE	640.23

COLLINS ENGINEERS, INC. ASSUMES NO RESPONSIBILITY FOR DAMAGES, LIABILITY, OR COSTS RESULTING FROM CHANGES OR ALTERATIONS MADE TO THIS PLAN WITHOUT THE EXPRESSED WRITTEN CONSENT OF COLLINS ENGINEERS, INC.



PROJECT OVERVIEW

PROJECT OVERVIEW
CONSTRUCT NEW CRIME LAB
ILLINOIS STATE POLICE
19422 & 19444 DIVISION STREET
CREST HILL, WILL, ILLINOIS

PROJECT NO.
291-000-018
DATE
08/21/2023
SHEET NO.
C0.100
OF () SHEETS

NOTE: CONTRACTOR SHALL OBTAIN AND VERIFY ALL DIMENSIONS AND CONDITIONS AT JOB SITE AND BE FULLY RESPONSIBLE FOR SAME.

REVISIONS		DRAWN	PREPARED
No.	Date		
1	07/06/22	ISSUE FOR 10% CD	
2	03/27/23	ISSUE FOR 50% CD	
3	06/21/23	ISSUE FOR 100% CD	
4	12/19/23	ISSUE TO CREST HILL	

TRACED	APPROVED
CHECKED	APPROVED

COLLINS ENGINEERS
550 West Jackson Boulevard
Chicago, IL 60601
Phone: (312) 566-9900

ARCHITECTS
1000 North Dearborn Street
Chicago, IL 60610
Phone: (312) 566-9900

Capital Development Board
Building a Better Illinois

State of Illinois
JB PRITZKER, GOVERNOR
Illinois Capital Development Board

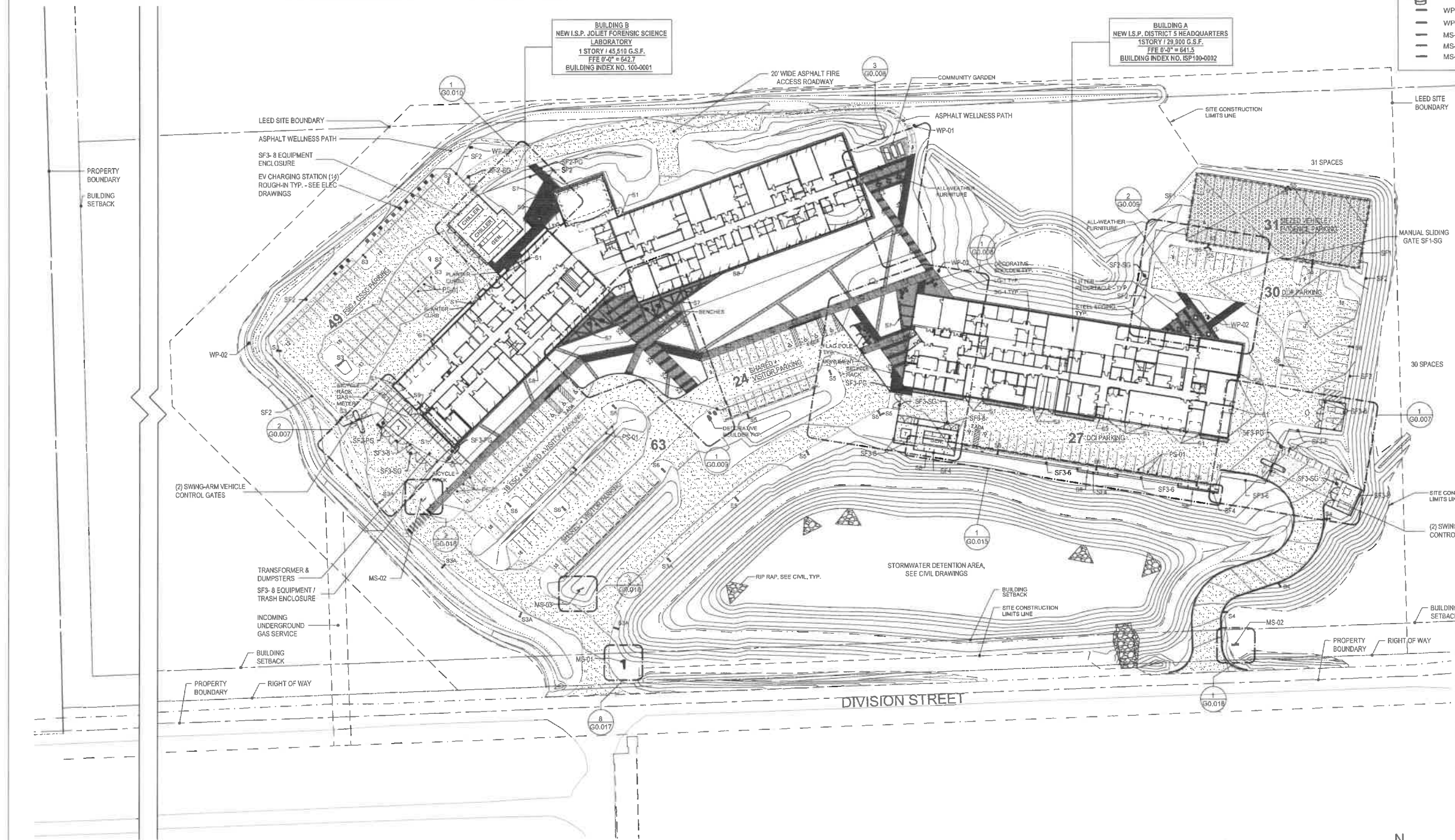
- SF - SITE FENCE & SCREEN WALL ASSEMBLIES**
- SF1 - SECURITY FENCE (CLOSED, SIZED VEHICLE PARKING ENCLOSURE)**
- 7 FT HIGH CHAINLINK FENCE WITH VINYL SLAT INSERTS FOR VISUAL SCREENING
 - 10 FT H x 26 FT W - MANUAL OVERHEAD HUNG SLIDING GATE MATCHING FENCE
- SF2 - SECURITY FENCE (OPEN WIRE TYPE)**
- 8 FT NOMINAL HEIGHT PREFINISHED MODULAR WELDED WIRE MESH PANEL FENCE SYSTEM
 - PANEL SIZE: NOMINAL 8'-0" H x 8'-0" L
 - WIRE MESH: 2" WIRE DIAM. 17 7/8" x 2" NOMINAL
 - POSTS: 2 3/8" SQUARE STEEL POSTS SET IN 12" DIAM. CONCRETE PIER FOUNDATION
 - MANUAL SLIDING GATES: SEE PLAN FOR SIZE
- SF3 - SECURITY FENCE (OPEN BAR-RATE TYPE)**
- PREFINISHED MODULAR WELDED WIRE MESH PANEL FENCE SYSTEM
 - 1. TYPE SF3-6: 6 FT NOMINAL OVERALL HEIGHT
 - 2. TYPE SF3-8: 8 FT NOMINAL OVERALL HEIGHT
 - PANEL SIZE: SF3-6: 6'-7 3/4" H x 6'-6 3/4" L / SF3-8: 8'-3" H x 6'-6 3/4" L
 - PANEL MESH: 2 7/16" x 5 13/16"
 - VERTICAL FLAT BARS: 1 13/16" x 5/8"
 - HORIZONTAL ROUND BARS: 1/4"
 - POSTS: 3/8" x 3 3/8" FLAT STEEL BARS SET IN 12" DIAM. CONCRETE PIER FOUNDATIONS WITH 1'-0" EMBEDMENT
- SF4 - SECURITY FENCE (SOLID)**
- 3.5 FT NOMINAL HEIGHT FIBER-CEMENT PANEL CLADDING SYSTEM
 - PANEL SIZE: (2) 4 FT HIGH BANDS - SEE ELEVATIONS
 - STEEL FRAMING SUPPORT: HSS 4" x 4" x 5/16" HPT-DIPPED GALVANIZED AND PAINTED
 - STEEL FRAME WITH HSS BRACE KICKERS SPACED @ 10 FT O.C. MAXIMUM
 - FOUNDATIONS: 12" DIAM. CONCRETE PIER FOUNDATIONS WITH 2'-0" HSS POST EMBEDMENT

- SITE PLAN LEGEND - FENCE TYPES**
- (SF1) SECURITY FENCE 1
 - (SF2) SECURITY FENCE 2
 - (SF3) SECURITY FENCE 3
 - (SF4) SECURITY FENCE 4
 - DUAL SERVICE GATE - FENCE TYPE SF2
 - PEDESTRIAN GATE - FENCE TYPE SF2
 - DUAL SERVICE GATE - FENCE TYPE SF3
 - PEDESTRIAN GATE - FENCE TYPE SF3

- SITE PLAN LEGEND - SITE LIGHTING**
- S1 EXTERIOR WALLPACK, SURFACE MOUNTED
 - S2 BOLLARD / PATHWAY LIGHT FIXTURE
 - S3 PARKING LOT AREA LIGHT ON 25' POLE
 - S3A PARKING LOT AREA LIGHT ON 25' POLE
 - S4 PARKING LOT AREA LIGHT ON 15' POLE
 - S5 PARKING LOT AREA LIGHT ON 15' POLE
 - S6 PARKING LOT AREA LIGHT ON 15' POLE
 - S7 CANOPY TRELLIS LIGHT FIXTURE
 - S8 LINEAR GRAZER ACCENT LIGHTING ON RAINSCREEN
 - S9 SOFFIT MOUNTED, RECESSED LIGHT FIXTURE - ENTRY ALCOVES

- SITE PLAN LEGEND - HARDSCAPE AND ROCK**
- ASPHALT PAVING
 - STANDARD COLOR CONCRETE (NOT DYED)
 - DC-1 DECORATIVE CONCRETE SIDEWALK - COLOR A
 - DC-2 DECORATIVE CONCRETE SIDEWALK - COLOR B
 - STANDARD NON-DECORATIVE GRAVEL
 - G-1 LANDSCAPE GRAVEL W/ EDGING AS NOTED
 - G-2 LANDSCAPE GRAVEL W/ EDGING AS NOTED
 - G-3 LANDSCAPE GRAVEL W/ EDGING AS NOTED
 - BIOSWALE RIP RAP
 - DECORATIVE BOULDERS

- SITE PLAN LEGEND - GENERAL**
- FLAG POLE - SEE LANDSCAPE DWGS
 - LOCATION OF MONUMENT - FURNISHED AND INSTALLED BY USING AGENCY
 - EV CHARGING STATION ROUGH-IN - SEE ELEC DWGS
 - PAINTED STEEL PIPE BOLLARD - SEE CIVIL DWGS
 - RIGHT OF WAY LINE
 - PROPERTY LINE
 - SITE CONSTRUCTION LIMITS LINE
 - BUILDING SETBACK LINE
 - LEED BOUNDARY
 - WELLNESS PATH
 - BICYCLE RACK - SEE LANDSCAPE DWGS
 - ALL-WEATHER WASTE RECEPTACLE - SEE LANDSCAPE DWGS
 - ALL-WEATHER BENCH - SEE LANDSCAPE DWGS
 - ALL-WEATHER FURNITURE - SEE LANDSCAPE DWGS
 - WP-01 - SITE INFORMATION WELLNESS PATH
 - WP-02 - SITE INFORMATION WELLNESS PATH
 - MS-01 - MONUMENTAL SIGN
 - MS-02 - MONUMENTAL SIGN
 - MS-03 - MONUMENTAL SIGN



PARKING SUMMARY			
PARKING BY DEPARTMENT	STANDARD STALLS (9x16 TYP.)	ADA STALLS (11x16)	TOTAL
VISITOR PARKING	45	-	45
SHARED EMPLOYEE PARKING	12	-	12
SHARED + VISITOR ADA STALLS	-	7	7
FSC EMPLOYEE PARKING	39	-	39
FSC+CSSC EMPLOYEE PARKING (200 STALLS)	26	-	26
DOP PARKING FOR SQUAD CARS	30	-	30
DCI SCREENED PARKING	25	2	27
SEIZED VEHICLES & EVIDENCE PARKING	31	-	31
TOTAL PARKING SPACES	215	9	224

NOTE: CONTRACTOR SHALL OBTAIN AND VERIFY ALL DIMENSIONS AND CONDITIONS AT JOB SITE AND BE FULLY RESPONSIBLE FOR SAME.

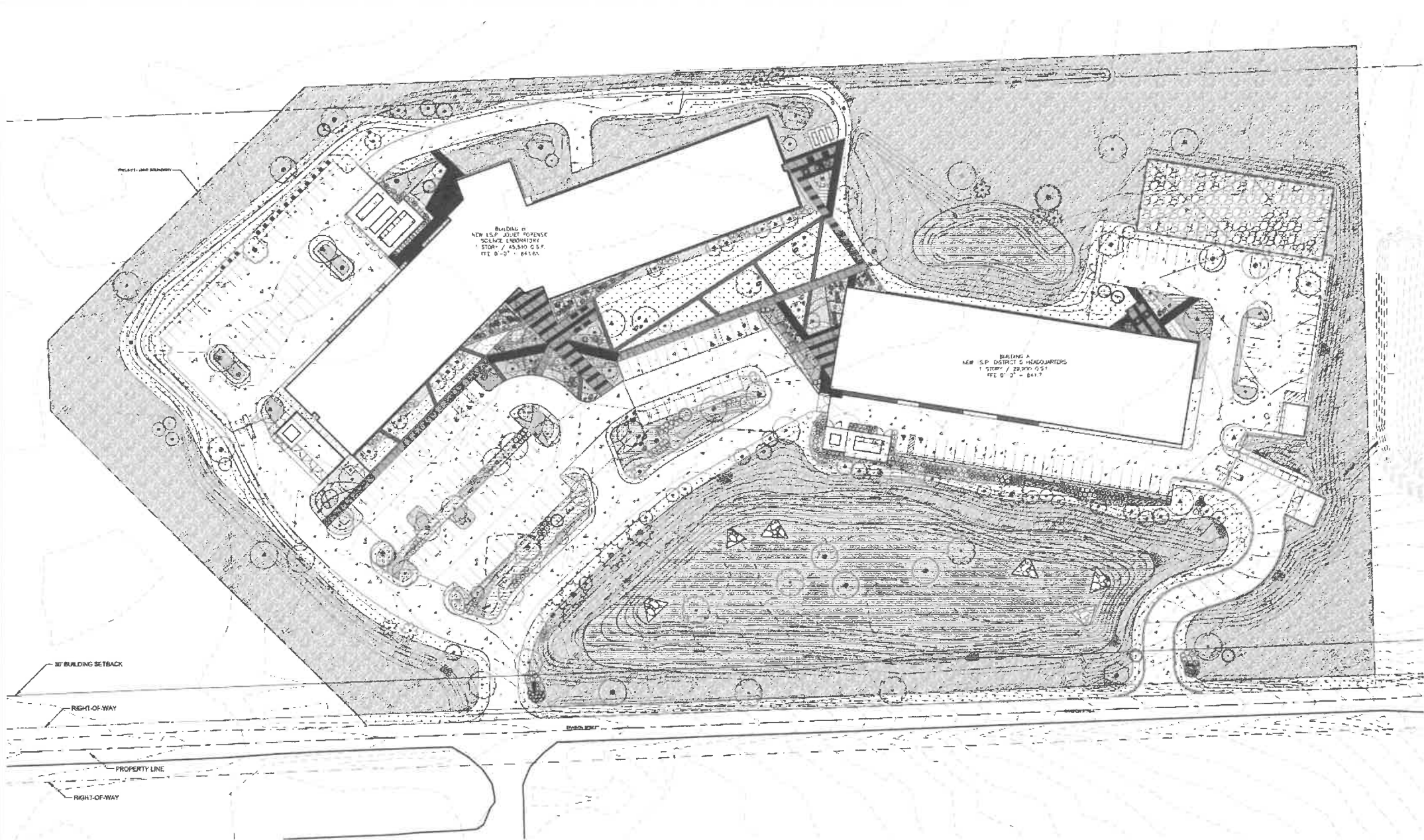
REVISIONS			DRAWN:	PREPARED:	TRACED:	APPROVED:	CHECKED:	APPROVED:
No.	Date	Description						
1	07/26/22	ISSUE FOR 100% CD	Author					
2	09/21/23	ISSUE FOR 50% CD	Author					
3	08/21/23	ISSUE FOR 100% CD	Author					
4	12/15/23	ISSUE TO CREST HILL	Author					

WET SEAL	CONSULTANT LOGO
----------	-----------------

State of Illinois
JB PRITZKER, GOVERNOR
Illinois Capital Development Board

ARCHITECTURAL SITE PLAN
CONSTRUCT NEW CRIME LAB
ILLINOIS STATE POLICE
19422 & 19444 DIVISION STREET
CREST HILL, WILL., ILLINOIS

PROJECT NO: 291-000-018
DATE: 10/30/2023
SHEET NO: **G0.006**
OF () SHEETS



- LEGEND
- TREES - SEE PLANTING PLANS
 - SITE PICNIC TABLES
 - BENCH
 - BOULDERS
 - STEEL EDGING, 1' x 4" HT.
 - LITTER RECEPTACLE
 - SITE LIGHT, SEE LIGHTING
 - FLAG POLE
 - BIKE RACKS

HARDSCAPE SCHEDULE		QTY
SYMBOL	DESCRIPTION	
	BOULDER, 3' X 6'	14
	BOULDER, 2' X 3'	25
ROCK DESCRIPTION		QTY
	G-1 SMALL DECORATIVE GRAVEL W/ STEEL EDGING AT LANDSCAPE	3,829 SF
	G-2 MEDIUM DECORATIVE GRAVEL WITH STEEL EDGING AT LANDSCAPE	5,915 SF
	G-3 LARGE DECORATIVE GRAVEL WITH STEEL EDGING AT LANDSCAPE	9,154 SF
CONCRETE DESCRIPTION		
	CONCRETE, SEE CIVIL	
	DRIVEWAY, PARKING LOT, AND WELLNESS PATH PAVEMENT, SEE CIVIL	
	SPECIALTY CONCRETE PATTERN AND SICOING, SEE ARCHITECTURE	
	STANDARD GRAVEL, SEE CIVIL	
	SEED TYPE 1	
	SEED TYPE 2	
	SEED TYPE 3	

- NOTES
- SEE L0.140-L0.144 PLANTING PLANS FOR PLANTS
 - SEE L0.145 FOR SEEDING PLAN
 - SEE L0.120 FOR SOIL PLAN AND DETAILS
 - SEE LIGHTING FOR SITE LIGHTS
 - SEE CIVIL FOR CONCRETE, PAVING, BOLLARDS AND DETECTABLE WARNING STRIPS
 - PROVIDE HOSE BIBBS EVERY 100' LINEAR FEET ALONG BUILDING FACADE, SEE PLUMBING
 - SEE ARCHITECTURE FOR FENCING, SITE WALLS, AND VEHICULAR GATES

1 LANDSCAPE SITE PLAN
1" = 40'-0"

NOTE: CONTRACTOR SHALL OBTAIN AND VERIFY ALL DIMENSIONS AND CONDITIONS AT JOB SITE AND BE FULLY RESPONSIBLE FOR SAME.

REVISIONS		DRAWN	PREPARED
No.	Date	Author	Author
1	8/26/22	ISSUE FOR 100% DD	
2	8/27/23	ISSUE FOR 90% CD	
3	8/27/23	ISSUE FOR 100% CD	
4	12/18/23	ISSUE TO CREST HILL	

CHECKED
Checker

APPROVED
Checker

T g d a
Landscape Architecture

ARCHITECTS

Capital
Development
Board
Building a Better Illinois

State of Illinois
JB PRITZKER, GOVERNOR
Illinois Capital Development Board

LANDSCAPE SITE PLAN
CONSTRUCT NEW CRIME LAB
ILLINOIS STATE POLICE
19422 AND 19444 DIVISION STREET
CREST HILL, WILL, ILLINOIS

PROJECT NO:
291-000-018
DATE:
08/21/2023
SHEET NO:
L0.100
OF () SHEETS

ELEVATION LEGEND & KEYNOTES

- 1A RAINSCREEN FIBER CEMENT PANEL CLADDING - COLOR 1A
- 1B RAINSCREEN FIBER CEMENT PANEL CLADDING - COLOR 1B
- 1C RAINSCREEN FIBER CEMENT PANEL CLADDING - COLOR 1C
- 1D RAINSCREEN FIBER CEMENT PANEL CLADDING - COLOR 1D
- 1E RAINSCREEN ALUMINUM COMPOSITE MATERIAL PANEL CLADDING - COLOR 1E

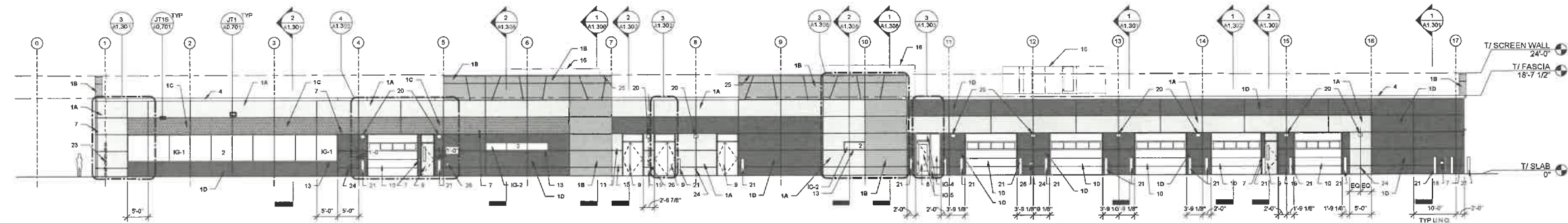
- 2 ALUMINUM FRAMED REBORN WINDOW SYSTEM - REFERENCE GLAZING NOTES FOR GLAZING TYPES
- 3 GLAZED ALUMINUM CURTAIN WALL SYSTEM - REFERENCE GLAZING NOTES FOR GLAZING TYPES
- 4 PREFINISHED METAL FASCIA - REFERENCE WALL SECTIONS
- 5 EXTERIOR STEEL-FRAMED TRELLIS, CLAD WITH FIBER CEMENT PANEL CLADDING
- 6 EXTERIOR PAINTED STEEL STRUCTURAL MEMBER
- 7 SECURITY DEVICE - REFERENCE 1 SERIES DRAWINGS
- 8 EXTERIOR ALUMINUM FRAMED ENTRANCE DOOR
- 9 EXTERIOR FLUSH METAL DOOR
- 10 EXTERIOR SECTIONAL OVERHEAD GARAGE DOOR
- 11 KNOXBOX AT 6'-2" AFF.
- 12 FIRE ALARM ANNUNCIATOR PANEL (FAP)
- 13 PREFINISHED METAL SILL - REFERENCE WALL SECTIONS
- 14 1 1/2" WIDE PANEL JOINT
- 15 FIRE DEPARTMENT CONNECTION
- 16 MECHANICAL EQUIPMENT - REFERENCE H SERIES AND V SERIES DRAWINGS
- 17 EXTERIOR STEEL TRELLIS SUPPORT STRUCTURE
- 18 PENETRATION AT EXTERIOR WALL - CONNECT STRUCTURAL MEMBER TO MAIN BUILDING STRUCTURE
- 19 LOCATION OF GAS METER
- 20 NON-FREEZE WALL HYDRANT - REFERENCE PLUMBING DRAWINGS
- 21 WALL MOUNTED EXTERIOR LIGHT FIXTURE - REFERENCE E SERIES DRAWINGS. MOUNT FIXTURE AT 5'-9" AFF TO TOP OF FIXTURE
- 22 PIPE BOLLARD
- 23 WALL MOUNTED SECURITY DEVICE - REFERENCE T SERIES SHEETS
- 24 SITE FENCE - REFERENCE ARCHITECTURAL SITE PLAN
- 25 ELECTRICAL DEVICE - REFERENCE E SERIES DRAWINGS
- 26 NOMINAL 1"X1" WET LOCATION LED STRIP RECESSED LIGHT FIXTURE W/ MOUNTING CUPS. 36 LINEAR FEET +/- @ EACH LOCATION IDENTIFIED.
- 27 ROOF DRAIN OVERFLOW

GLAZING NOTES

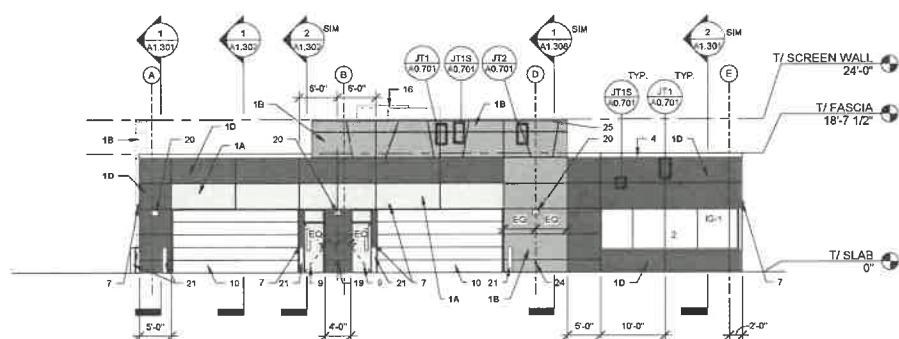
- TYPE IG-1 - INSULATING GLASS UNITS: LOW-E COATED TINTED VISION GLASS
- TYPE IG-2 - INSULATING GLASS UNITS: LOW-E COATED TINTED FULLY TEMPERED VISION GLASS
- APPLICATIONS: EXTERIOR GLAZING AT LOCATIONS INDICATED AND WHERE SAFETY GLAZING IS REQUIRED
- TYPE IG-3 - INSULATING GLASS UNITS: TINTED VISION GLASS HEAT STRENGTHENED FOR SEALED / NON-VENTED SHADOW BOX APPLICATION
- TYPE IG-4 - NON-TEMPERED CLEAR VISION GLASS AT CONDITIONS ABOVE MULLIONS 2' & 10" AFF, ABOVE DOORS
- TYPE IG-5 - CLEAR FULLY TEMPERED VISION GLASS AT DOORS AND AT LITES ADJACENT TO DOORS, MULLIONS BELOW 2' AFF, EXTERIOR H/D DOORS

SHEET NOTES - ELEVATION

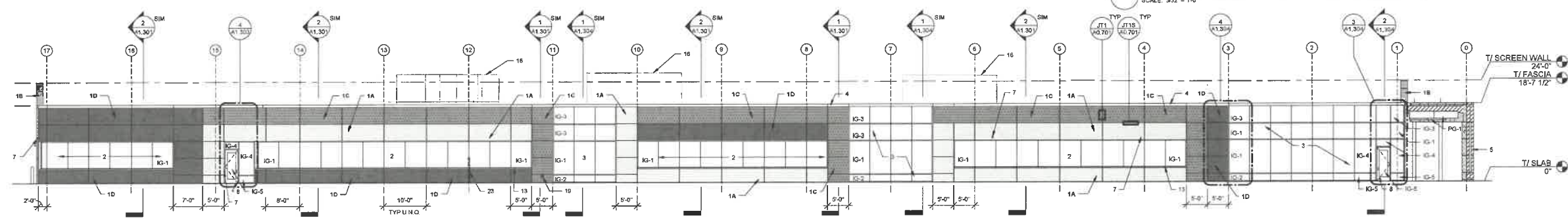
1. ALL QUANTITIES SHOWN ARE APPROXIMATE AND PROVIDED FOR GENERAL INFORMATION. THE CONTRACTOR IS RESPONSIBLE FOR ALL QUANTITIES AND SHALL VERIFY OR FIELD VERIFY ALL CONDITIONS AND ACTUAL QUANTITIES
2. 10'-0" TYPICAL PANEL WIDTH U.N.O. DIMENSIONS ARE REFERENCED TO/FROM CENTERLINE OF PANEL JOINTS U.N.O. REFERENCE A-D 7 SERIES DETAILS FOR DIMENSION REFERENCE LINES ADJACENT TO OPENINGS.



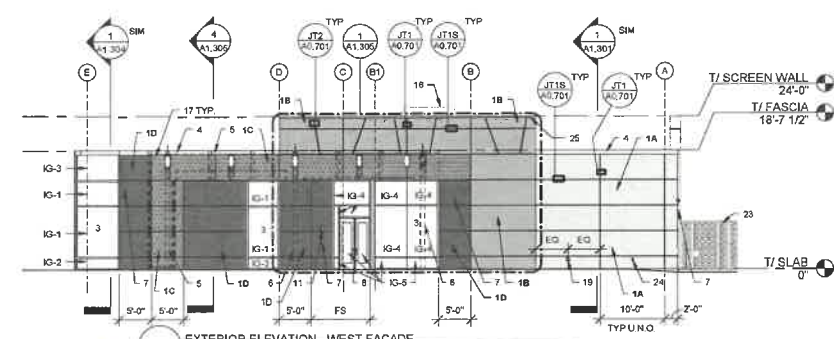
4 EXTERIOR ELEVATION - SOUTH FACADE
SCALE: 3/32" = 1'-0"



3 EXTERIOR ELEVATION - EAST FACADE
SCALE: 3/32" = 1'-0"



2 EXTERIOR ELEVATION - NORTH FACADE
SCALE: 3/32" = 1'-0"



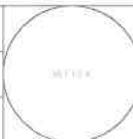
1 EXTERIOR ELEVATION - WEST FACADE
SCALE: 3/32" = 1'-0"

Blp. A - Police Building

NOTE: CONTRACTOR SHALL OBTAIN AND VERIFY ALL DIMENSIONS AND CONDITIONS AT JOB SITE AND BE FULLY RESPONSIBLE FOR SAME.

REVISIONS		DRAWN	PREPARED
No.	Date		
1	07/26/22	ISSUE FOR 100% DD	TRACED
2	03/27/23	ISSUE FOR 50% CDs	APPROVED
3	08/21/23	ISSUE FOR 100% CDs	Author
4	12/15/23	ISSUE TO CREST HILL	

CHECKED	APPROVED
Checker	Checker



CONSULTANT LOGO



Capital Development Board
Building a Better Illinois

State of Illinois
JB PRITZKER, GOVERNOR
Illinois Capital Development Board

BLDG A POLICE - EXTERIOR ELEVATIONS
CONSTRUCT NEW CRIME LAB
ILLINOIS STATE POLICE
W DIVISION STREET / BROADWAY STREET
CREST HILL, WILL, ILLINOIS

PROJECT NO.
291-000-018
DATE
10/30/2023
SHEET NO.
A1.201
OF () SHEETS

ELEVATION LEGEND & KEYNOTES

- 1A RAINSCREEN FIBER CEMENT PANEL CLADDING - COLOR 1A
- 1B RAINSCREEN FIBER CEMENT PANEL CLADDING - COLOR 1B
- 1B2 RAINSCREEN FIBER CEMENT PANEL CLADDING - COLOR 1B2
- 1C RAINSCREEN FIBER CEMENT PANEL CLADDING - COLOR 1C
- 1D RAINSCREEN FIBER CEMENT PANEL CLADDING - COLOR 1D
- 1E RAINSCREEN ALUMINUM COMPOSITE MATERIAL PANEL CLADDING - COLOR 1E
- 2 ALUMINUM FRAMED RIBBON WINDOW SYSTEM. REFERENCE GLAZING NOTES FOR GLAZING TYPES.
- 3 GLAZED ALUMINUM CURTAIN WALL SYSTEM. REFERENCE GLAZING NOTES FOR GLAZING TYPES.
- 4 PREFINISHED METAL FASCIA. REFERENCE WALL SECTIONS.
- 5 EXTERIOR STEEL-FRAMED TRELLIS. CLAD WITH FIBER CEMENT PANEL CLADDING. SEE SHEET A2.401.
- 6 EXTERIOR PAINTED STEEL STRUCTURAL MEMBER.
- 7 SECURITY DEVICE. REFERENCE T SERIES DRAWINGS.
- 8 EXTERIOR ALUMINUM FRAMED ENTRANCE DOOR.
- 9 EXTERIOR FLUSH METAL DOOR.
- 10 EXTERIOR SECTIONAL OVERHEAD GARAGE DOOR.
- 11 KNOXBOX AT 6'-6" AFF.
- 12 FIRE DEPARTMENT CONNECTION.
- 13 PREFINISHED METAL SILL. REFERENCE WALL SECTIONS.
- 14 1 1/2" WIDE PANEL JOINT.
- 15 CONTINUOUS BUILDING EXPANSION JOINT - REFERENCE STRUCTURAL DRAWINGS.
- 16 MECHANICAL EQUIPMENT - REFERENCE H SERIES AND V SERIES DRAWINGS.
- 17 EXTERIOR STEEL TRELLIS SUPPORT STRUCTURE. PENETRATION AT EXTERIOR WALL. CONNECT STRUCTURAL MEMBER TO MAIN BUILDING STRUCTURE. REFERENCE DETAILS ON SHEET A2.401, A2.402, AND A2.403.
- 18 LOCATION OF GAS METER.
- 19 NON-FREEZE WALL HYDRANT - REFERENCE PLUMBING DRAWINGS.
- 20 WALL MOUNTED EXTERIOR LIGHT FIXTURE - REFERENCE ELECTRICAL DRAWINGS. MOUNT FIXTURE AT 6'-6" AFF TO TOP OF FIXTURE.
- 21 PIPE BOLLARD - REFERENCE ARCHITECTURAL SITE PLAN AND C SERIES SHEETS.
- 22 ROOF DRAIN OVERFLOW.

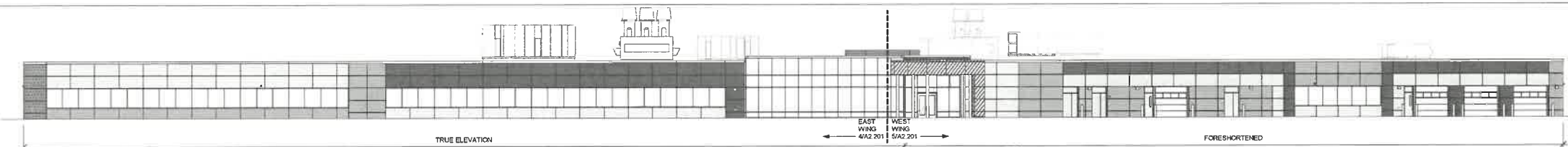
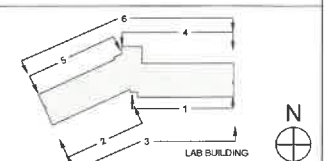
GLAZING NOTES

- TYPE IG-1 - INSULATING GLASS UNITS. LOW-E COATED TINTED VISION GLASS.
- TYPE IG-2 - INSULATING GLASS UNITS. LOW-E COATED TINTED FULLY TEMPERED VISION GLASS.
- APPLICATIONS: EXTERIOR GLAZING AT LOCATIONS INDICATED AND WHERE SAFETY GLAZING IS REQUIRED.
- TYPE IG-3 - INSULATING GLASS UNITS. TINTED VISION GLASS HEAT STRENGTHENED FOR SEALED / NON-VENTED SHADOW BOX APPLICATION.
- TYPE IG-4 - NON-TEMPERED CLEAR VISION GLASS AT CONDITIONS ABOVE MULLIONS 2 & 10' AFF, ABOVE DOORS.
- TYPE IG-5 - CLEAR FULLY TEMPERED VISION GLASS AT DOORS AND AT LITES ADJACENT TO DOORS, MULLIONS BELOW 2' AFF, EXTERIOR HW DOORS.

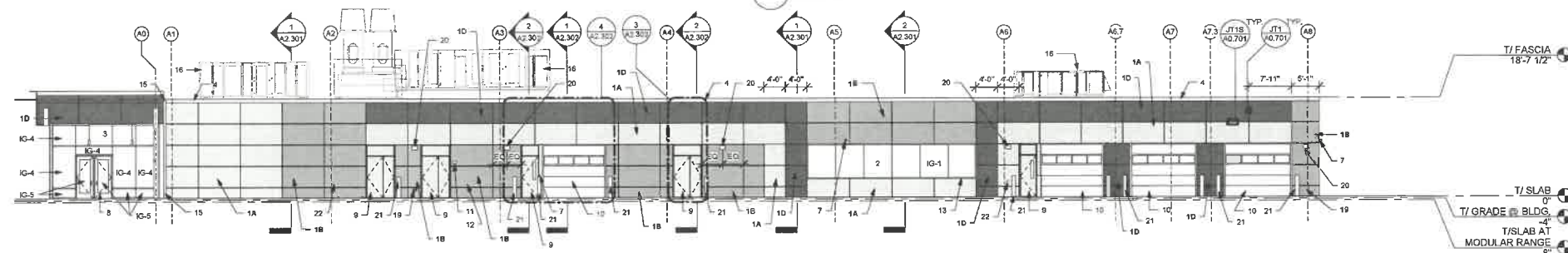
SHEET NOTES - ELEVATION

1. ALL QUANTITIES SHOWN ARE APPROXIMATE AND PROVIDED FOR GENERAL INFORMATION. THE CONTRACTOR IS RESPONSIBLE FOR ALL QUANTITIES AND SHALL VERIFY OR FIELD VERIFY ALL CONDITIONS AND ACTUAL QUANTITIES.
2. 7'-10 1/2" TYPICAL PANEL WIDTH U.N.O. DIMENSIONS ARE REFERENCED TO/TOP OF CENTERLINE OF PANEL JOINTS U.N.O. REFERENCE A1.7 SERIES DETAILS FOR DIMENSION REFERENCE LINES ADJACENT TO OPENINGS.

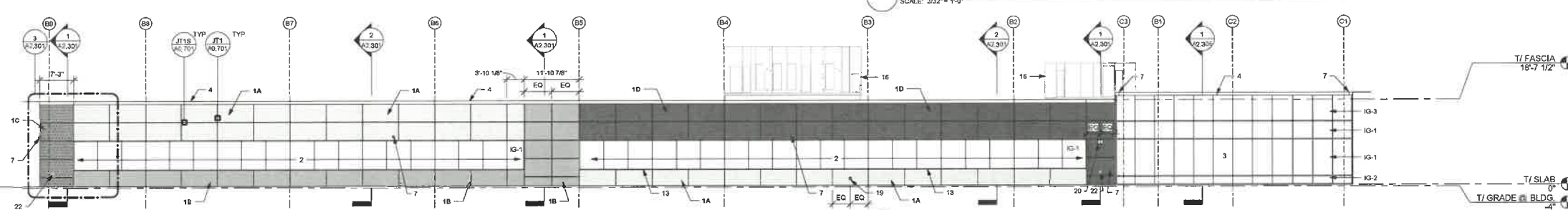
KEY PLAN



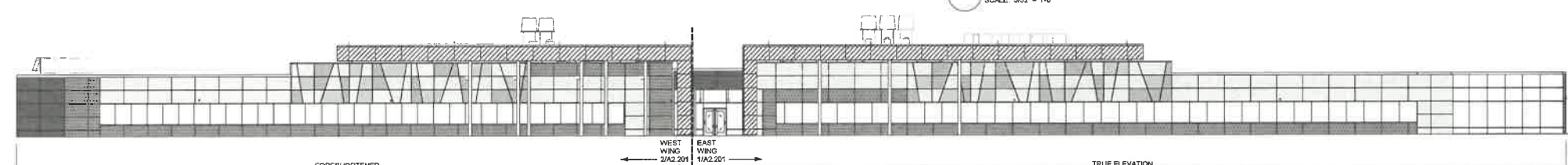
6 OVERALL EXTERIOR ELEVATION - NORTH FACADE FOR REFERENCE
SCALE: 1/16" = 1'-0"



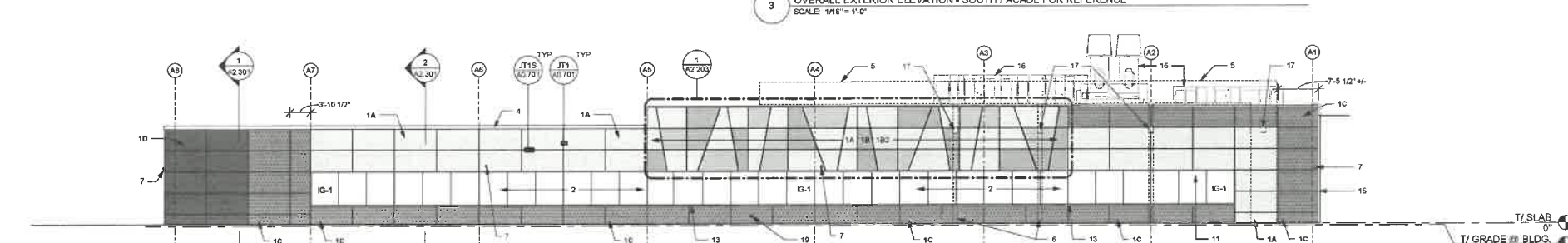
5 PARTIAL EXTERIOR ELEVATION - WEST WING NORTH FACADE
SCALE: 3/32" = 1'-0"



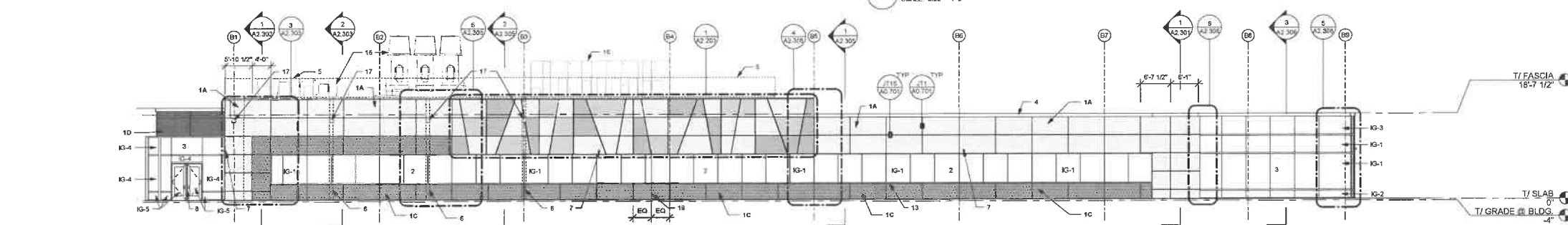
4 PARTIAL EXTERIOR ELEVATION - EAST WING NORTH FACADE
SCALE: 3/32" = 1'-0"



3 OVERALL EXTERIOR ELEVATION - SOUTH FACADE FOR REFERENCE
SCALE: 1/16" = 1'-0"



2 PARTIAL EXTERIOR ELEVATION - WEST WING SOUTH FACADE
SCALE: 3/32" = 1'-0"



1 PARTIAL EXTERIOR ELEVATION - EAST WING SOUTH FACADE
SCALE: 3/32" = 1'-0"

NOTE: CONTRACTOR SHALL OBTAIN AND VERIFY ALL DIMENSIONS AND CONDITIONS AT JOB SITE AND BE FULLY RESPONSIBLE FOR SAME.

REVISIONS		DRAWN	PREPARED
No.	Date	Author	Author
1	07/26/22	ISSUE FOR 100% CD	
2	03/21/23	ISSUE FOR 50% CD	
3	08/01/23	ISSUE FOR 100% CD	

TRACED	APPROVED
Author	Author
CHECKED	APPROVED
Checker	Checker



03/26/24 T.L.G.



Capital Development Board
Building a Better Illinois

Building B - LAB

State of Illinois
JB PRITZKER, GOVERNOR
Illinois Capital Development Board

BLDG B LAB - EXTERIOR ELEVATIONS
CONSTRUCT NEW CRIME LAB
ILLINOIS STATE POLICE
W DIVISION STREET / BROADWAY STREET
CREST HILL, WILL, ILLINOIS

PROJECT NO: 291-000-018
DATE: 10/30/2023
SHEET NO: **A2.201**
OF () SHEETS