

Exhibit A



# Sidewalk Engineering Evaluation Proposal

Presented to: Raymond Soliman  
City of Crest Hill  
Crest Hill 2024 Engineering Evaluation  
January 18, 2024

Philip Sitton • Project Manager • 331.444.4822 • [Philip@NoTrippin.com](mailto:Philip@NoTrippin.com) • [www.notrippin.com](http://www.notrippin.com)

*Information contained in this proposal is proprietary and confidential, and is to be used solely by City of Crest Hill personnel in evaluating the project. Copying, unauthorized disclosure, reuse in any form is prohibited.*

# Introduction

---

January 23, 2024

Raymond Soliman  
City of Crest Hill  
20600 City Center Blvd  
Crest Hill, Illinois 60403

Raymond,

Thank you for the opportunity to present this proposal for the City of Crest Hill's 2024 sidewalk engineering evaluation.

## Review

1. The City of Crest Hill has requested Safe Step LLC evaluate sidewalk segments in Wards 1,3, and 4, in priority order until the \$60,000.00 engineering budget has been reached.
2. Upon reaching the engineering budget, the evaluation will stop. If all of the priority areas are able to be included prior to reaching the budget, City of Crest Hill can provide additional sidewalk segments for evaluation.
3. Safe Step LLC will evaluate sidewalks for defects that present a trip hazard and are appropriate for saw-cutting repair based on the identification criteria on page 4.
4. Safe Step LLC will also evaluate sidewalks for defects that are not appropriate for saw-cutting repair and will require alternative repair methods.

## Notable Proposal Contents

- Page 2: Execution Strategy
- Page 3: Survey Areas Map
- Page 4: Evaluation Criteria
- Page 7: Proposal Acceptance

Please let me know if you have any questions. We look forward to serving your needs.

Philip Sitton  
Project Manager  
331.444.4822  
Philip@NoTrippin.com

**Philip Sitton • Project Manager • 331.444.4822 • Philip@NoTrippin.com • [www.notrippin.com](http://www.notrippin.com)**

*Information contained in this proposal is proprietary and confidential, and is to be used solely by **City of Crest Hill** personnel in evaluating the project. Copying, unauthorized disclosure, reuse in any form is prohibited.*

# Execution Strategy

---

Based on our discussions, Safe Step will execute the project as follows:

1. Confirm sidewalk evaluation area and defect identification criteria (enclosed)

1. Page 3 of this proposal contains the sidewalk areas and the priority in which they should be evaluated and repaired.
2. Page 4 of this proposal contains the defect identification criteria that will be used to evaluate the sidewalks.

2. Evaluate current sidewalk conditions

1. Safe Step LLC will evaluate the sidewalk locations in the priority order until the budget is met.
2. Identified defects will be recorded along with the measurement, address, approximate GPS coordinates, important notes, and a photo of the defect.

3. Deliver evaluation results

1. Following the completion of the evaluation, Safe Step LLC will provide the sidewalk defect data through a proprietary online tool called *Sidewalk Central™*. This data includes locations, descriptions, suggested repair types, and photos of each defect identified.
2. *Sidewalk Central™* allows you to review, make notes, and confirm the preferred repair type for each defect.

4. Perform repairs

1. After you review and confirm the repair locations, we will schedule a timeframe to begin repairing the identified saw-cutting locations.
2. All saw-cutting repairs will be done in accordance with "The Safe Step LLC Approach" outlined on page 5 of this proposal.
3. *Sidewalk Central™* allows you to monitor the saw-cutting in real-time, providing defect completion status as well as repair photos and timestamps for quality assurance.

5. Provide documentation

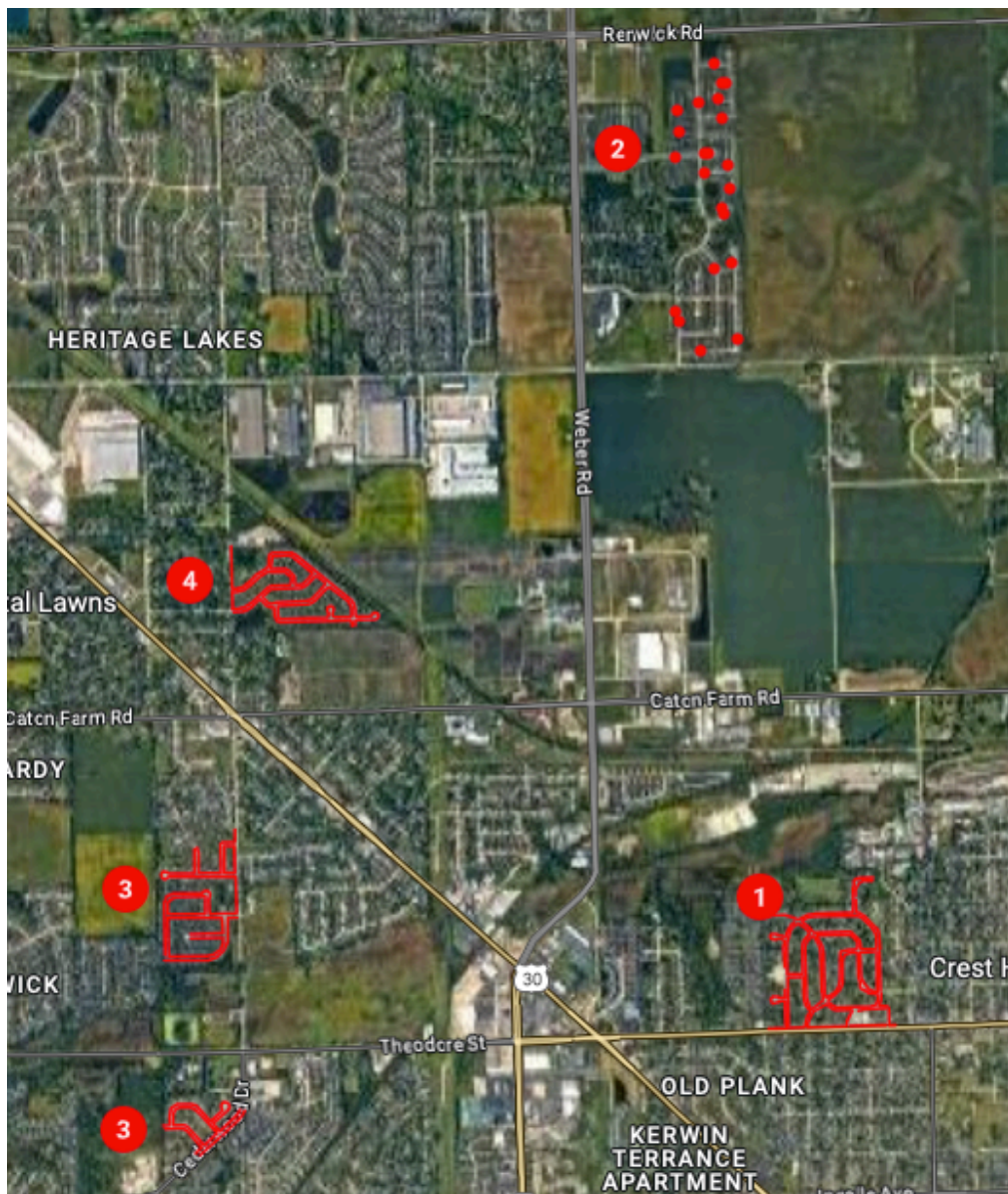
1. At the conclusion of the project, we will provide a final report of saw-cut locations repaired including the displacement measurements, address, approximate GPS coordinates, and important notes.

**Philip Sitton • Project Manager • 331.444.4822 • Philip@NoTrippin.com • [www.notrippin.com](http://www.notrippin.com)**

*Information contained in this proposal is proprietary and confidential, and is to be used solely by City of Crest Hill personnel in evaluating the project. Copying, unauthorized disclosure, reuse in any form is prohibited.*



# Survey Areas Map



Map Data: Google

## Survey Area

- Ward 1: (5.23 Miles)
- Ward 2: (Driveways Only)
- Ward 3: (4.11 Miles)
- Ward 4: (3.17 Miles)
- Total Miles: 12.51

**Philip Sitton • Project Manager • 331.444.4822 • Philip@NoTrippin.com • [www.notrippin.com](http://www.notrippin.com)**

*Information contained in this proposal is proprietary and confidential, and is to be used solely by **City of Crest Hill** personnel in evaluating the project. Copying, unauthorized disclosure, reuse in any form is prohibited.*

# Sidewalk Evaluation Criteria

Condition			Record for Saw-Cutting	Record for Replacement
Panel Offset:			Y	If greater
Min (1/8s)	4	Max (1/8s) 16		Y
Sharp edge:			Y	N/A
		Height (1/8s) 3		
Prior Grind/Saw-Cut Repairs <sup>1</sup> :			Y*	
Cutting to sunken panel:			Lift	Y
Waterpooling:			Lift	Y
Caused by tree:			CR	Y
Negative cross-slope:			Y,CR - Severe	Y
Positive cross-slope:			Y,CR - Severe	Y
Contains structural crack <sup>2</sup> :			Y	Y
Qty no more than	1	Gap no more than 3/8"		
Displacement is a crack <sup>2</sup> :			N	Y
Perpendicular	N	Parallel N		
Panel is spalled <sup>2</sup> :			Y	Y
Surface less than	50	Depth no more than 1"		
Sidewalk joint is decayed <sup>2</sup> :			Y	Y
		Width no more than 1"		
Curbing:			CR	CR
On bridge structure:			N	N
Parallel joints:			Y	Y
Min. Height	4	Max Height 16		
Ramps:			Y	Y
At Landing Max Ht	ADA	At street Max Ht ADA		
Top of flowline:			N	Y
Adjacent to asphalt:			CR	Y
Adjacent to pavers:			CR	Y

<sup>1</sup>As measured at presenting face; recorded values will be for proper 12:1 repair

<sup>2</sup>Panels failing this criteria will be recorded for replacement regardless of offset

## Marking/Other

Mark Saw-Cutting	Numbered
DWP - Plastic	\$12/sq ft to install
Mark R&R	Y/N
5" R&R Sq. Ft. Cost	\$16
6" R&R Sq. Ft. Cost	\$18

Use Lifting for sunken & waterpooling panels	Y
Mark Lifting	N
Lifting Sq. Ft. Price	TBD

## Scatter Sites

Apply criteria to scatter sites?	Y
Survey only marked?	
Survey entire address?	Driveway
Survey entire block-face?	

## Crest Hill Notes:

\*Prior Repairs-If presenting exceeds 4  
 \*Evaluate culverts as traditional sidewalk, not bridges.  
 \*Client Review any long stretches of depressed curb along sidewalk/

Philip Sitton • Project Manager • 331.444.4822 • Philip@NoTrippin.com • [www.notrippin.com](http://www.notrippin.com)

Information contained in this proposal is proprietary and confidential, and is to be used solely by City of Crest Hill personnel in evaluating the project. Copying, unauthorized disclosure, reuse in any form is prohibited.

# The Safe Step Approach

---



## Specifications

1. Repairs will be tapered to a 1:12 slope ratio and taken to a zero point of differential between adjoining sidewalk panels along the full width of the sidewalk, in accordance with ADA standards.
2. Repairs shall have a smooth and uniform finish with a coefficient of friction meeting OSHA requirements and shall not impact adjoining sidewalks, driveways, landscaping, or other objects within the vicinity of the work.
3. In instances where sidewalk conditions do not permit a 1:12 slope ratio, repairs will be made with the shallowest slope possible for the given sidewalk condition.



## Clean-up

1. All saw-cutting will be performed without water-cooling; No slurry will be created eliminating the risk of “tracking” and run-off water contamination.
2. Saw mounted dust abatement systems will be used to minimize airborne dust. Containment systems are designed for fine dust applications.
3. Debris and concrete shall be cleaned from the sidewalk surface as well as surrounding rails, sidewalks, driveways, landscaping, or other objects within the vicinity of the work.



## Reporting

1. Upon completion of the project, Safe Step LLC will provide a detailed and audit-able report. This report will include the street address or location, dimensions, and GPS coordinates of each repair made.
2. An invoice for payment will be provided when the projected has been completed. Payment in full is due **30 days** from the date of invoice. Late payments may be subject to a \$30 re-billing fee.



## Safety and Insurance

1. Safe Step LLC employees who work directly in slab displacement repair undergo a rigorous training process with emphasis on safe work practices, OSHA-approved personal protection equipment, and quality workmanship. It is not uncommon for our clients to receive unsolicited compliments on our safety practices and the quality of the work performed.
2. Safe Step LLC is fully licensed and insured. Proof of auto, liability, and workers compensation insurance are available upon request.



## Proprietary Technology

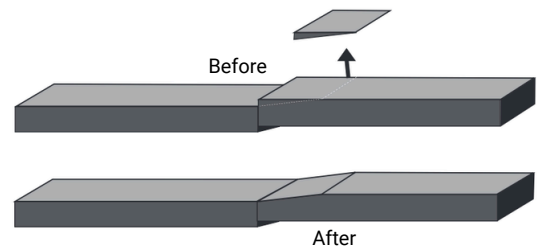
1. Safe Step LLC is the only entity in Wisconsin, Northern Illinois, and Southeast Minnesota authorized to use the Precision Concrete Cutting method for removing sidewalk trip hazards as described by the following patent numbers: U.S. Pat. No. 6,827,074, U.S. Pat. No. 7,000,606, U.S. Pat. No. 7,143,760, U.S. Pat. No. 6,896,604, U.S. Pat. No. 7,201,644, U.S. Pat. No. 7,402,095. These patents refer to the equipment, methods, and dust abatement systems used by Safe Step LLC. A sole source letter is available upon request.

**Philip Sitton • Project Manager • 331.444.4822 • Philip@NoTrippin.com • [www.notrippin.com](http://www.notrippin.com)**

*Information contained in this proposal is proprietary and confidential, and is to be used solely by **City of Crest Hill** personnel in evaluating the project. Copying, unauthorized disclosure, reuse in any form is prohibited.*



# Our Result



Before



After



**Philip Sitton • Project Manager • 331.444.4822 • Philip@NoTrippin.com • [www.notrippin.com](http://www.notrippin.com)**

*Information contained in this proposal is proprietary and confidential, and is to be used solely by **City of Crest Hill** personnel in evaluating the project. Copying, unauthorized disclosure, reuse in any form is prohibited.*

# Proposal Acceptance

## Financial Parameters

### 1. Financial Parameters

1. The total cost of the engineering evaluation and reporting will not exceed **\$60,000.00**.
2. Safe Step LLC will accept full responsibility for any project cost overage, provided that the scope of the project is not altered once the project begins. Any requested change in scope will be fully discussed and approved by the City of Crest Hill prior to the start of the work on the revised area.
3. Invoice terms are net 30 after engineering evaluation has been completed and delivered.

If this proposal is acceptable, please complete and sign below. We will contact you upon receiving this form to schedule your project.

**Cost: \$60,000.00**

**Proposal #: 201741**

Due to the ongoing supply chain issues and labor availability, the pricing in this proposal is only valid until **February 29, 2024**.

Billing Contact Name:

Billing Email Address:

PO Number:  Does this project require prevailing wage?:

Approved by:  Date:

Signed:  SIGNATURE  
Raymond Soliman

Title:

### Client Notes:

Use this form to provide us with any other information we may need to know.

*For a valuable consideration, the receipt and sufficiency of which is hereby acknowledged, the above signed hereby agrees to defend, indemnify, and hold contractor harmless with respect to any and all liability whatsoever arising from contractor's activities in attempting to repair concrete sidewalk and other slabs owned by the above signed or within the above signed's dominion and control, and to defend, indemnify, and hold harmless contractor with respect thereto.*

**Philip Sitton • Project Manager • 331.444.4822 • Philip@NoTrippin.com • [www.notrippin.com](http://www.notrippin.com)**

*Information contained in this proposal is proprietary and confidential, and is to be used solely by City of Crest Hill personnel in evaluating the project. Copying, unauthorized disclosure, reuse in any form is prohibited.*