

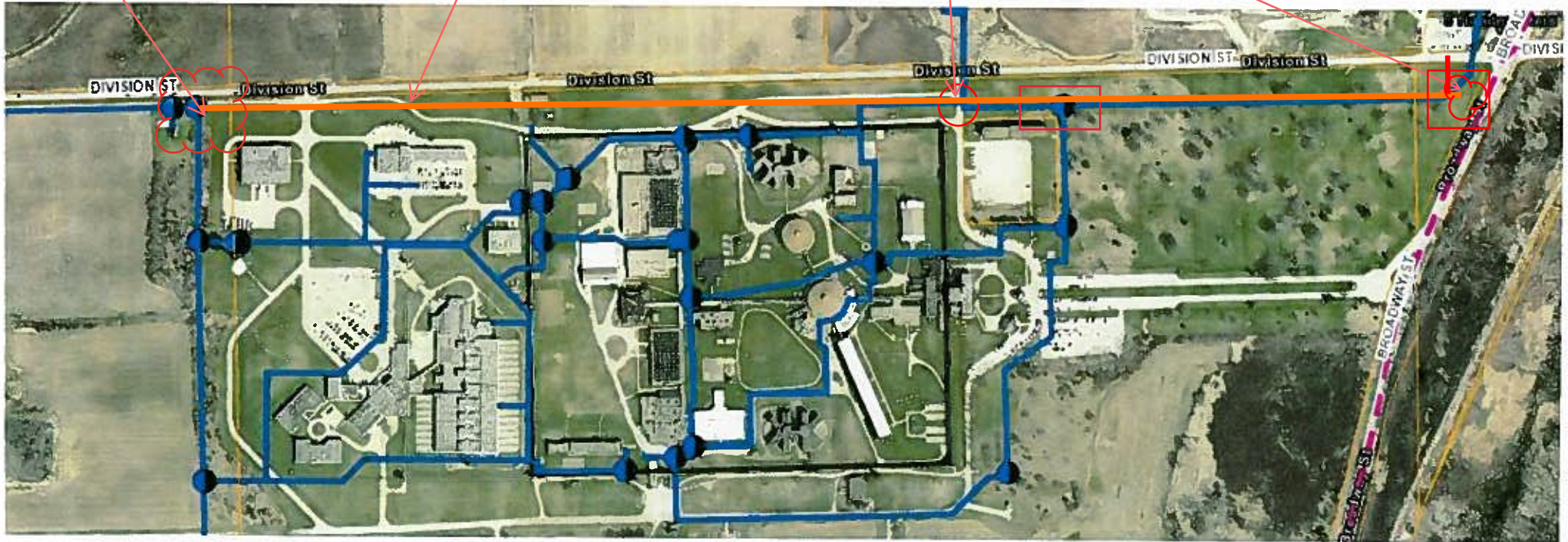
New proposed water main to be placed in a 10 ft wide utility easement granted by the DOC to the City of Crest Hill.

Once constructed the city will own and maintain this new water main extension.

Approximate proposed new ISP Lab water service tie-in location construction to the north right of way line of Division St.

Approximate location of new ISP water service tie-in location constructed to the north right of way to Division St.

Extend Water Main from City of Crest Hill's Well 11.



Note:

All required easements to be acquired by the State of Illinois Capital Development Board from the Department of Corrections.