

1 FIRST FLOOR - PROPOSED BUILDING  
A02 SCALE: 3/32"=1'-0"

TOTAL - UNIT MIX DATA

UNIT	C.C. DOWN OUT	C.C. DOWN OUT	C.C. DOWN IN	C.C. DOWN IN	UP IN	C.C. UP IN	TOTAL	% of UNITS	NET SQ.FT.
5x5	0	0	0	47	0	0	47	19	1,175
5x10	0	0	0	76	0	0	76	31	3,800
7.5x10	0	0	0	40	0	0	40	16	3,000
10x10	0	0	0	33	0	0	33	13	3,300
10x15	0	0	0	33	0	0	33	13	4,950
10x20	0	0	0	12	0	0	12	5	2,400
10x30	0	6	0	0	0	0	6	2	1,800
	0	6	0	241	0	0	247	100	20,425
NET RENTABLE		20,425							
AVG. UNIT SIZE		83							
GROSS SQ.FT.		26,340							
EFFICIENCY		78%							

2 UNIT MIX SCHEDULE  
A02

EXHIBIT K



EXTRA SPACE STORAGE, Inc.  
2795 E COTTONWOOD PARKWAY, SUITE 400,  
SALT LAKE CITY, UTAH 84121

PROJECT CONTACT

NAME: CLINT KLEPPE  
PHONE: (480) 266 - 5263  
EMAIL: ckleppe@extraspacespace.com

CONTACT ADDRESS

EXTRA SPACE STORAGE, Inc..  
CORPORATE OFFICE  
2795 E COTTONWOOD PARKWAY,  
SUITE 400,  
SALT LAKE CITY, UTAH 84121

COPYRIGHT WARNING: All drawings that originate from Extra Space Storage are copyrighted by Federal Copyright Law. No part of these drawings may be reproduced or transmitted in any form or by any means, electronic or mechanical, including drawing and/or photocopying without the written authorization of Extra Space Storage. These drawings cannot be used in any manner to create new, modified, or derivative drawings without the written authorization of Extra Space Storage. Any violation constitutes infringement, which is subject to civil and criminal penalties as prescribed by law.

PROJECT NAME

ESS SITE #1108

PROJECT LOCATION

EXTRA SPACE STORAGE #1108  
1812 N LARKIN AVE  
CREST HILL, IL 60403

DATE

06/09/2025

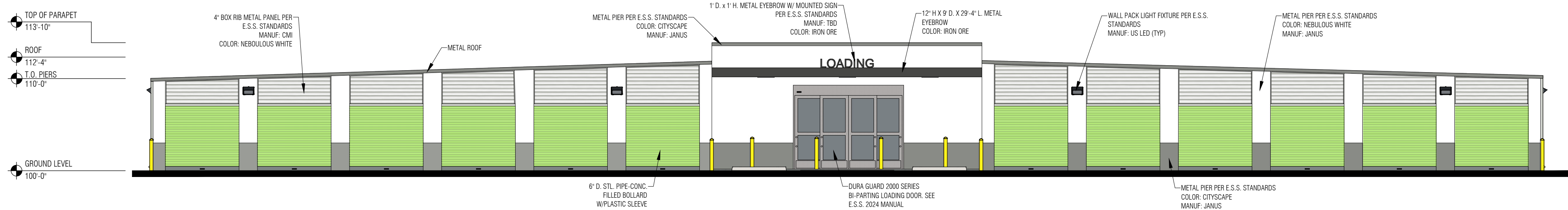
SHEET TITLE

FLOOR PLANS

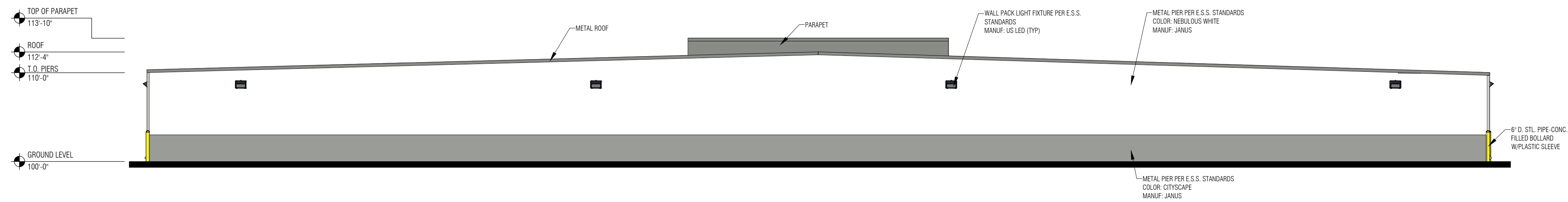
SHEET NUMBER

A-02

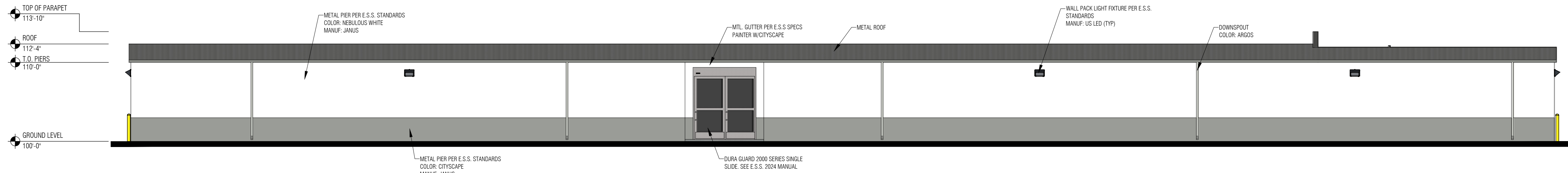
THESE DRAWINGS ARE FOR REFERENCE USE ONLY AND ARE NOT FOR CONSTRUCTION. ARCHITECT TO USE THESE DRAWINGS FOR REFERENCE ONLY. ARCHITECT/ENGINEER IS RESPONSIBLE FOR VERIFYING ALL DIMENSIONS AND CODE REQUIREMENTS AS REQUIRED BY LOCAL JURISDICTIONS.



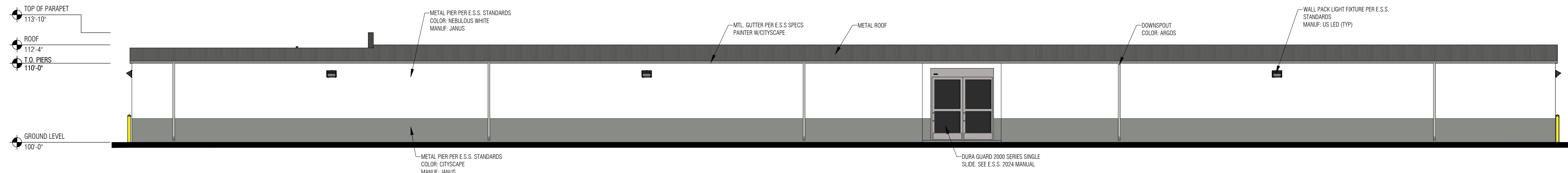
1 NORTH-EAST ELEVATION  
A03 SCALE: 1/8"=1'-0"



2 SOUTH-WEST ELEVATION  
A03 SCALE: 1/8"=1'-0"



3 SOUTH-EAST ELEVATION  
A03 SCALE: 1/8"=1'-0"



4 NORTH-WEST ELEVATION  
A03 SCALE: 1/8"=1'-0"

THESE DRAWINGS ARE FOR REFERENCE USE ONLY AND ARE NOT FOR CONSTRUCTION. ARCHITECT TO USE THESE DRAWINGS FOR REFERENCE ONLY. ARCHITECT/ENGINEER IS RESPONSIBLE FOR VERIFYING ALL DIMENSIONS AND CODE REQUIREMENTS AS REQUIRED BY LOCAL JURISDICTIONS.



EXTRA SPACE STORAGE, Inc.  
2795 E COTTONWOOD PARKWAY, SUITE 400,  
SALT LAKE CITY, UTAH 84121

#### PROJECT CONTACT

NAME: CLINT KLEPPE  
PHONE: (480) 266 - 5263  
EMAIL: ckleppe@extraspacespace.com

#### CONTACT ADDRESS

EXTRA SPACE STORAGE, Inc..  
CORPORATE OFFICE  
2795 E COTTONWOOD PARKWAY,  
SUITE 400,  
SALT LAKE CITY, UTAH 84121

COPYRIGHT WARNING: All drawings that originate from Extra Space Storage are copyrighted by Federal Copyright Law. No part of these drawings may be reproduced or transmitted in any form or by any means, electronic or mechanical, including drawing and/or photocopying without the written authorization of Extra Space Storage. These drawings cannot be used in any manner to create new, modified, or derivative drawings without the written authorization of Extra Space Storage. Any violation constitutes infringement, which is subject to civil and criminal penalties as prescribed by law.

#### PROJECT NAME

ESS SITE #1108

#### PROJECT LOCATION

EXTRA SPACE STORAGE #1108  
1812 N LARKIN AVE  
CREST HILL, IL 60403

#### DATE

06/09/2025

#### SHEET TITLE

ELEVATIONS

#### SHEET NUMBER

A-03





1 VIEW DRIVE UP UNITS - NORTH EAST SIDE  
A04 SCALE: N.T.S.



2 SECONDARY LOADING DOOR - SOUTH EAST SIDE  
A04 SCALE: N.T.S.



3 SECONDARY LOADING DOOR - NORTH WEST SIDE  
A04 SCALE: N.T.S.



4 LOADING AREA - NORTH EAST SIDE  
A04 SCALE: N.T.S.

THESE DRAWINGS ARE FOR REFERENCE USE ONLY AND ARE NOT FOR CONSTRUCTION. ARCHITECT TO USE THESE DRAWINGS FOR REFERENCE ONLY. ARCHITECT/ENGINEER IS RESPONSIBLE FOR VERIFYING ALL DIMENSIONS AND CODE REQUIREMENTS AS REQUIRED BY LOCAL JURISDICTIONS.



EXTRA SPACE STORAGE, Inc..  
2795 E COTTONWOOD PARKWAY, SUITE 400,  
SALT LAKE CITY, UTAH 84121

PROJECT CONTACT

NAME: CLINT KLEPPE  
PHONE: (480) 266 - 5263  
EMAIL: ckleppe@extraspace.com

CONTACT ADDRESS

EXTRA SPACE STORAGE, Inc..  
CORPORATE OFFICE  
2795 E COTTONWOOD PARKWAY,  
SUITE 400,  
SALT LAKE CITY, UTAH 84121

COPYRIGHT WARNING: All drawings that originate from Extra Space Storage are copyrighted by Federal Copyright Law. No part of these drawings may be reproduced or transmitted in any form or by any means, electronic or mechanical, including drawing and/or photocopying without the written authorization of Extra Space Storage. These drawings cannot be used in any manner to create new, modified, or derivative drawings without the written authorization of Extra Space Storage. Any violation constitutes infringement, which is subject to civil and criminal penalties as prescribed by law.

PROJECT NAME

ESS SITE #1108

PROJECT LOCATION

EXTRA SPACE STORAGE #1108  
1812 N LARKIN AVE  
CREST HILL, IL 60403

DATE

06/09/2025

SHEET TITLE

RENDERINGS

SHEET NUMBER

A-04