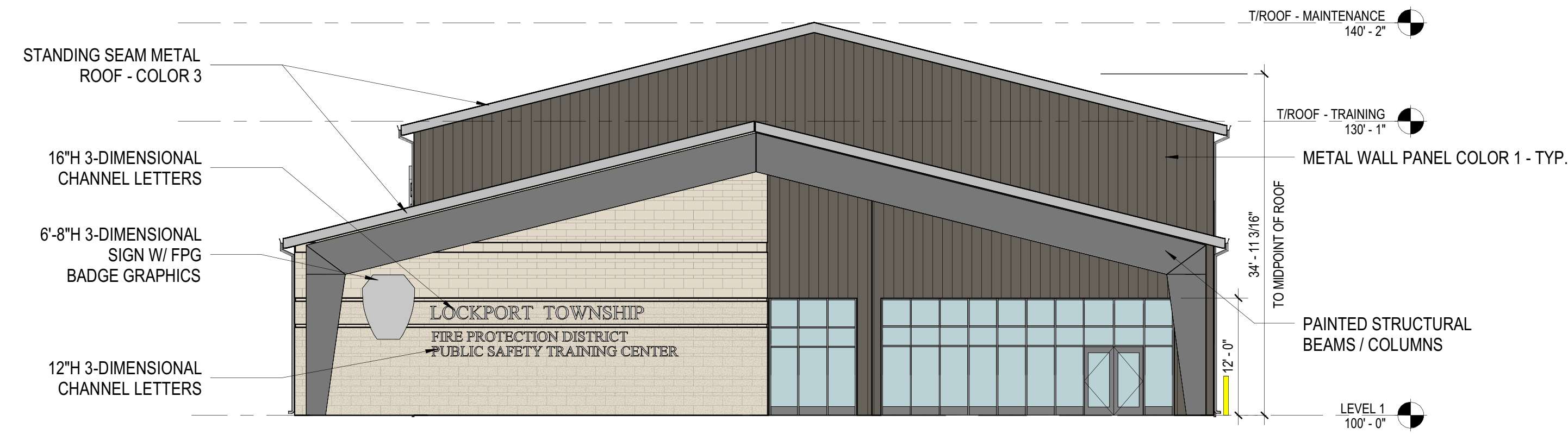
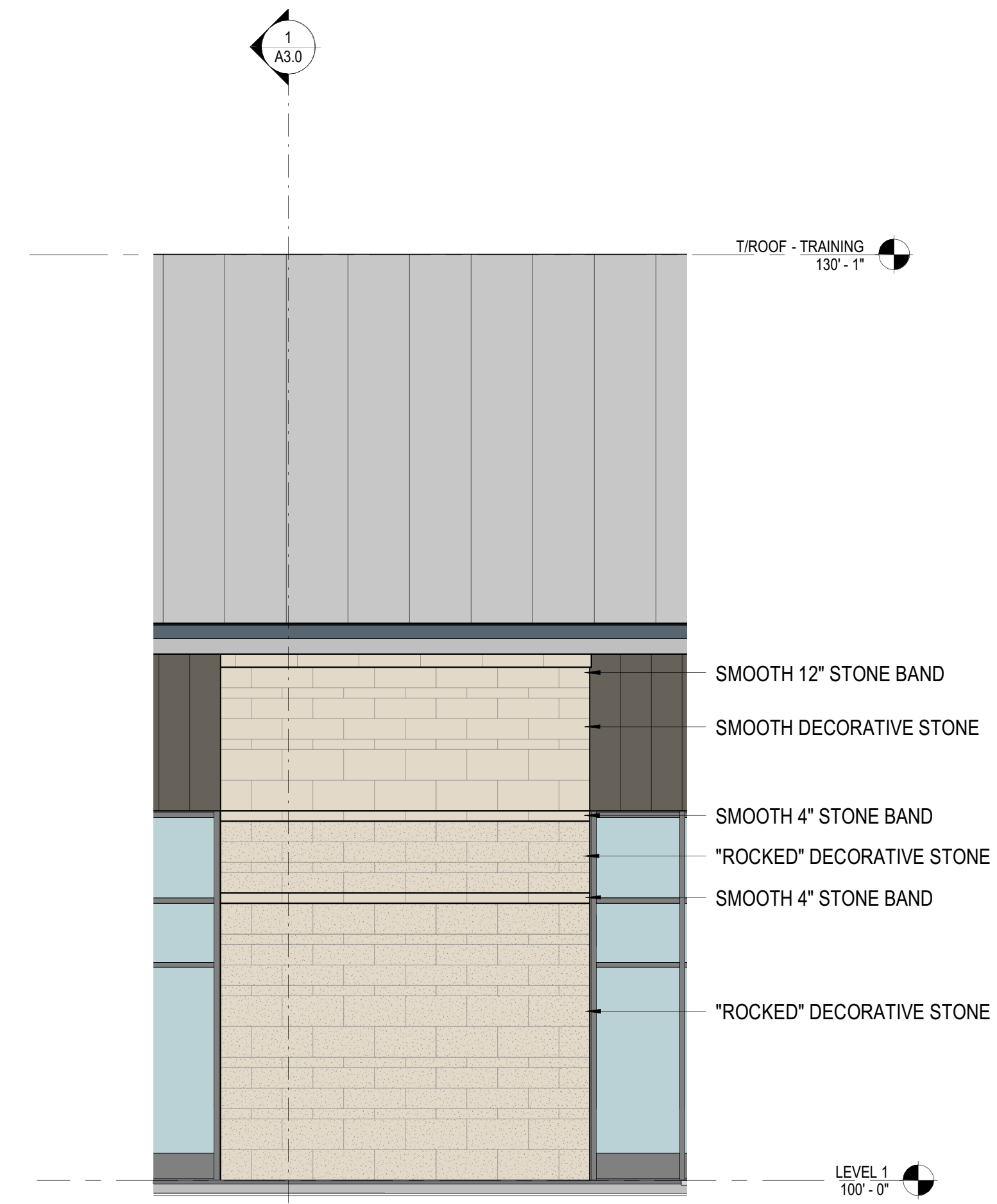


LOCKPORT TOWNSHIP FPD TRAINING GROUNDS

W DIVISION ST, LOCKPORT, ILLINOIS 60441



2 | BUILDING ELEVATION - WEST
3/32" = 1'-0"



3 | MASONRY WALL DETAIL
1/4" = 1'-0"



1 | BUILDING ELEVATION - NORTH
3/32" = 1'-0"

BUILDING 1 - ELEVATIONS

SCALE: 3/32" = 1'-0"

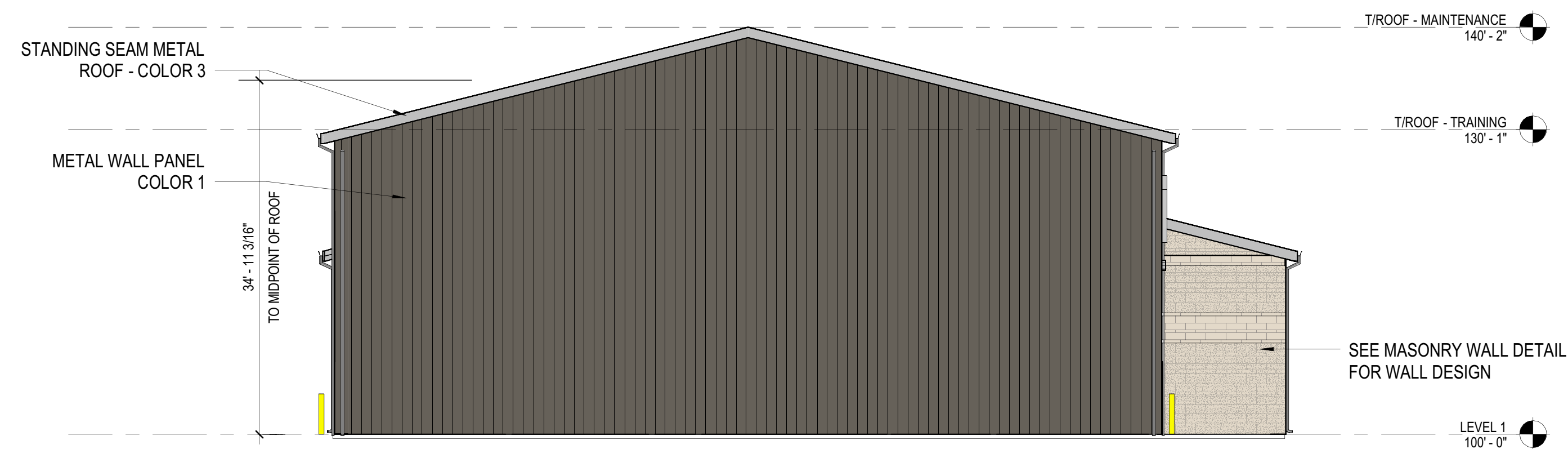
LOCKPORT FIRE PROTECTION DISTRICT
Job No. 23-3640.02

Published 01/13/2025
©2022 FGM Architects Inc.



LOCKPORT TOWNSHIP FPD TRAINING GROUNDS

W DIVISION ST, LOCKPORT, ILLINOIS 60441



2 BUILDING ELEVATION - EAST
3/32" = 1'-0"



1 BUILDING ELEVATION - SOUTH
3/32" = 1'-0"

BUILDING 1 - ELEVATIONS

LOCKPORT FIRE PROTECTION
DISTRICT
Job No. 23-3640.02

Published 01/13/2025
©2022 FGM Architects Inc.

