

SITE DATA TABLE

LAND USE: INDUSTRIAL

SITE AREA:
 PRIVATE = 48.97 AC.
 PUBLIC R.O.W. = 2.21 AC.
 DEDICATION AREA = 0.71 AC.
 TOTAL SITE AREA = 51.89 AC.

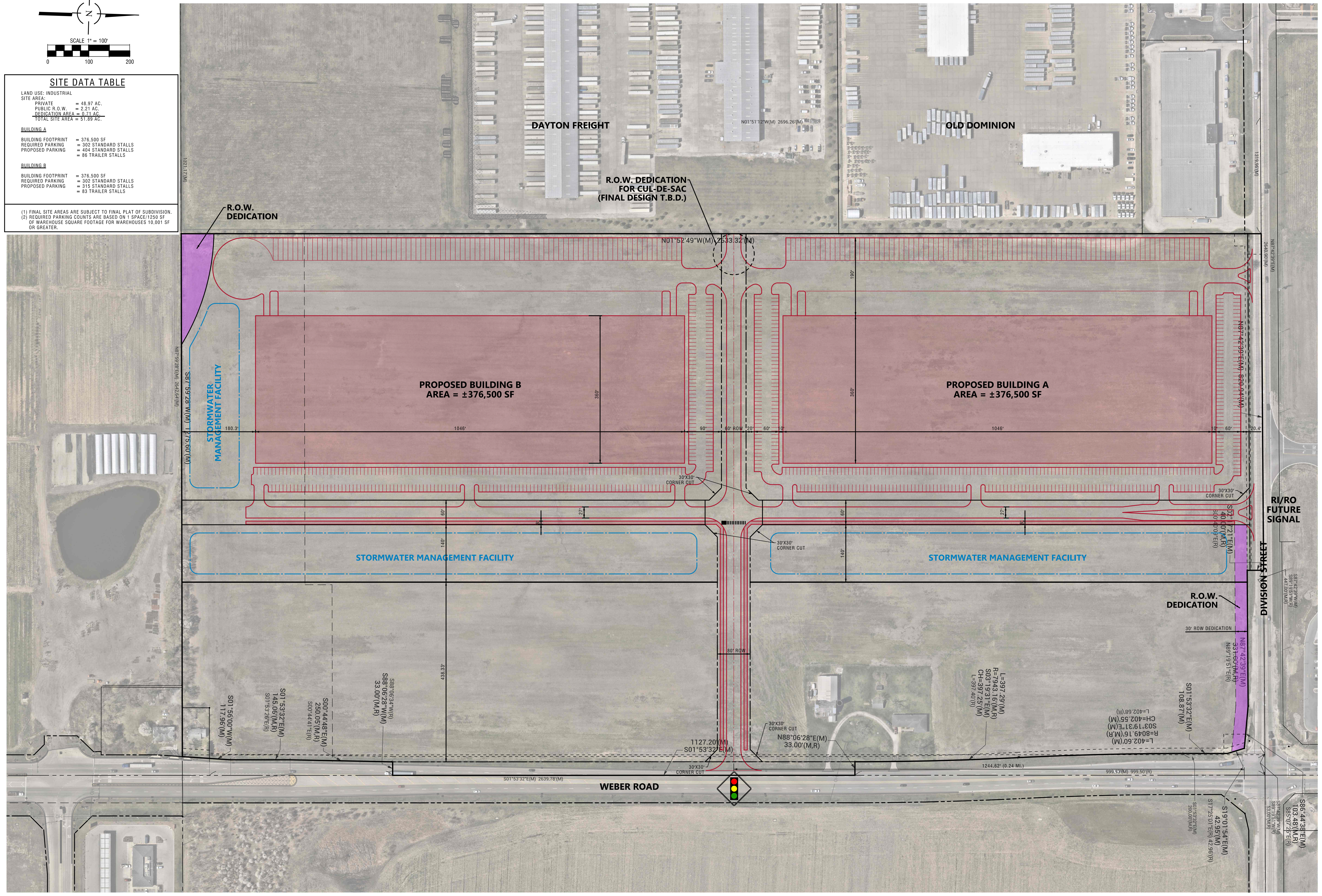
BUILDING A

BUILDING FOOTPRINT = 376,500 SF
 REQUIRED PARKING = 302 STANDARD STALLS
 PROPOSED PARKING = 404 STANDARD STALLS
 = 86 TRAILER STALLS

BUILDING B

BUILDING FOOTPRINT = 376,500 SF
 REQUIRED PARKING = 302 STANDARD STALLS
 PROPOSED PARKING = 315 STANDARD STALLS
 = 83 TRAILER STALLS

(1) FINAL SITE AREAS ARE SUBJECT TO FINAL PLAT OF SUBDIVISION.
 (2) REQUIRED PARKING COUNTS ARE BASED ON 1 SPACE/1250 SF OF WAREHOUSE SQUARE FOOTAGE FOR WAREHOUSES 10,001 SF OR GREATER.



NO.	DATE	REMARKS

CONCEPT SITE PLAN
CREST HILL INDUSTRIAL DEVELOPMENT
 W DIVISION ST & WEBER RD

Spaceco
 Civil Engineering & Surveying
 Rosemont, IL - Morris, IL - Indianapolis, IN
 spacecoinc.com

FILENAME:	14092-CONCEPT SITE PLAN
DATE:	03/18/26
JOB NO.	14092
SHEET	C-SITE
	1 OF 1