

PARKREATION, INC c/o ICON Shelters

27 East Palatine Road, Prospect Heights, IL 60070

February 3, 2025

Quotation Number: P020325K
 Project Name: Cortland
 Quoted By: Paul Gozder 815-735-1497
 Good Buy contract # 24-25-9B000 Addendum # 1

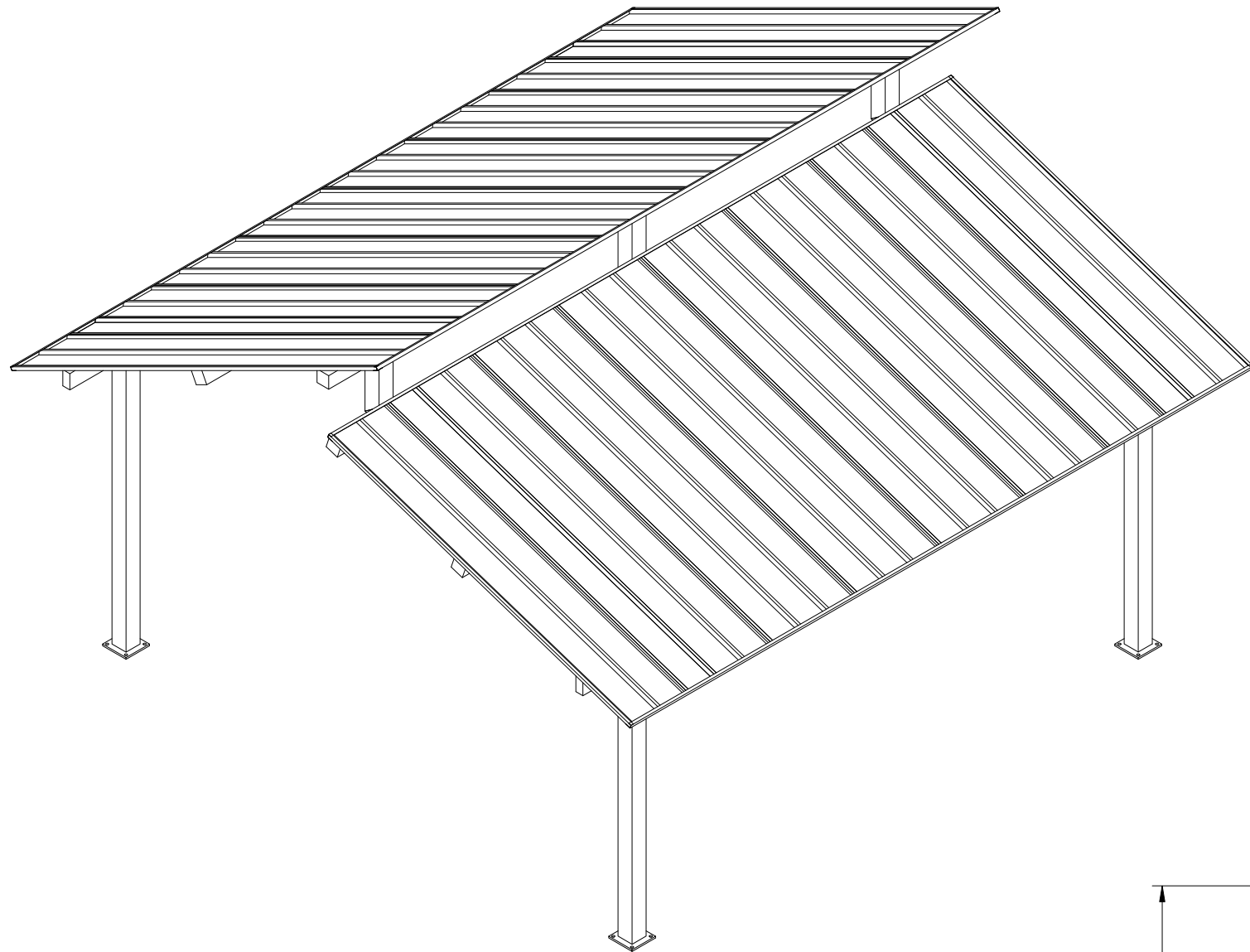
Brandy Williams PE, PLS
 Engineer and Zoning Administrator
 Town of Cortland
 P.O. Box 519 | 59 S. Somonauk Rd
 Cortland, IL 60112
 P 815.756.9041 | F 815.756.4583
 engineer@cortlandil.org
 www.cortlandil.org

<u>QTY.</u>	<u>Product #</u>	<u>Description</u>	<u>All pricing is valid for 30 days</u>	<u>Unit Price</u>	<u>Total Price</u>
01	DS22x22M-P64	22' square dual slope shelter by ICON Shelters Steel (4) columns (6:12 pitch and 4:12 pitch) 8' eave height E-coat / powder coat color / final gloss finish Surface mount columns with base covers Carbon steel anchor bolts and necessary hardware included.			
		Total Material cost		\$ 28,440.00	
		Good buy 10% discount applied		<u>\$ -2,844.00</u>	
		Total		\$ 25,596.00	
		Illinois stamped engineered drawings		\$ 250.00	
		Shipping		<u>\$ 1,300.00</u>	
		Total		\$27,146.00	

- Terms:
1. "I/We understand that all accounts are payable to Parkreation, Inc. according to the terms of their invoice, and if not paid on or before said date, are then delinquent. I/We agree to pay any and all service charges added each month to past due invoices. Terms are Net 30 days upon delivery with approved credit. All charges are due and payable in full at Parkreation, Inc., 27 E. Palatine Rd., Prospect Heights, IL 60070 unless notified in writing to the contrary. To the extent the terms and conditions of any purchase order/contract and/or any purchase order/contract confirmations are inconsistent with the terms and conditions of this signed quote, the terms and conditions of this signed quote shall prevail.
 2. All pricing is valid for 30 days from the date above.
 3. The above pricing (if more than one item) is based upon a package purchase. Any adjustments may be subject to a price revision.
 4. Customer is responsible for the off-loading of the equipment and an accurate inventory should be taken at the time and all missing or damaged parts should be noted to the Driver. You have 60 days to report any missing or damaged parts to your sales representative. Truck Driver will not unload equipment.
 5. Nontaxable entities are required to provide copy of tax exempt certificate or be taxed upon invoice.
 6. Installation not included unless specifically quoted

Date _____ Purchaser's Signature _____ Purchaser's Title _____

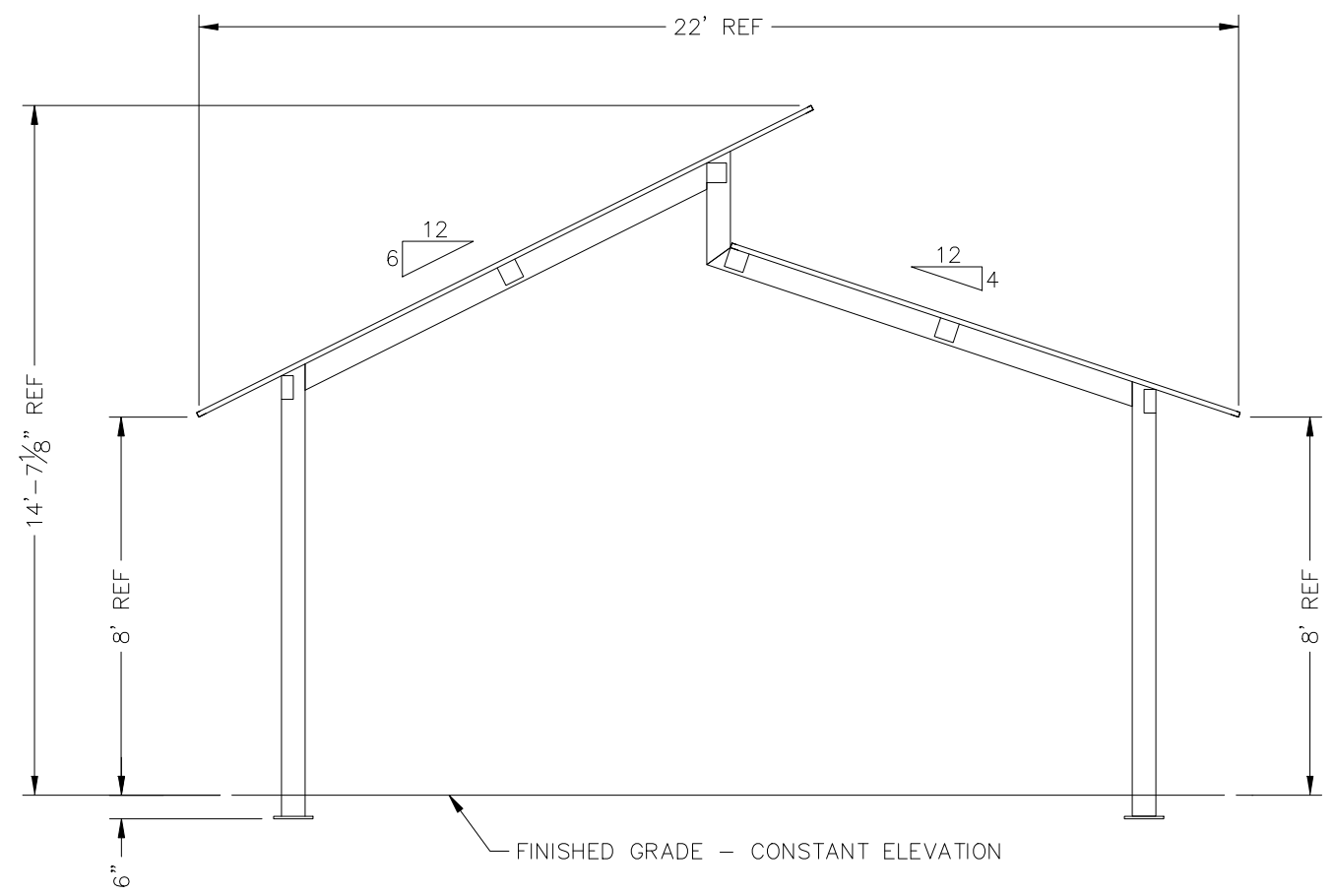
Email Address _____ Special Instructions _____



PRELIMINARY: NOT FOR
CONSTRUCTION

ICON
Shelter Systems Inc
DISTINCTIVE STEEL SHELTERS
WWW.ICONSHelters.COM
COPYRIGHT 2004, ICON SHELTER SYSTEMS, INC.
1455 LINCOLN AVE.
HOLLAND MI, 49423
616.396.0919
800.748.0985
616.396.0944 FX

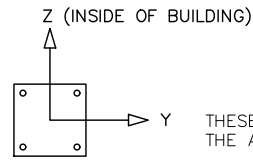
Elevation



DRAWN BY:	ACP
DATE:	1/31/2025
PRELIMINARY ID:	96311
REVISION:	A
BUILDING TYPE:	DS24X24M-P64
PROJECT NAME:	

SHEET
1.0

DWG:DS\22X22\M-P6-25-90-19\Drawings\Preliminary\DS22M-P64-25-90-19~96311.DWG

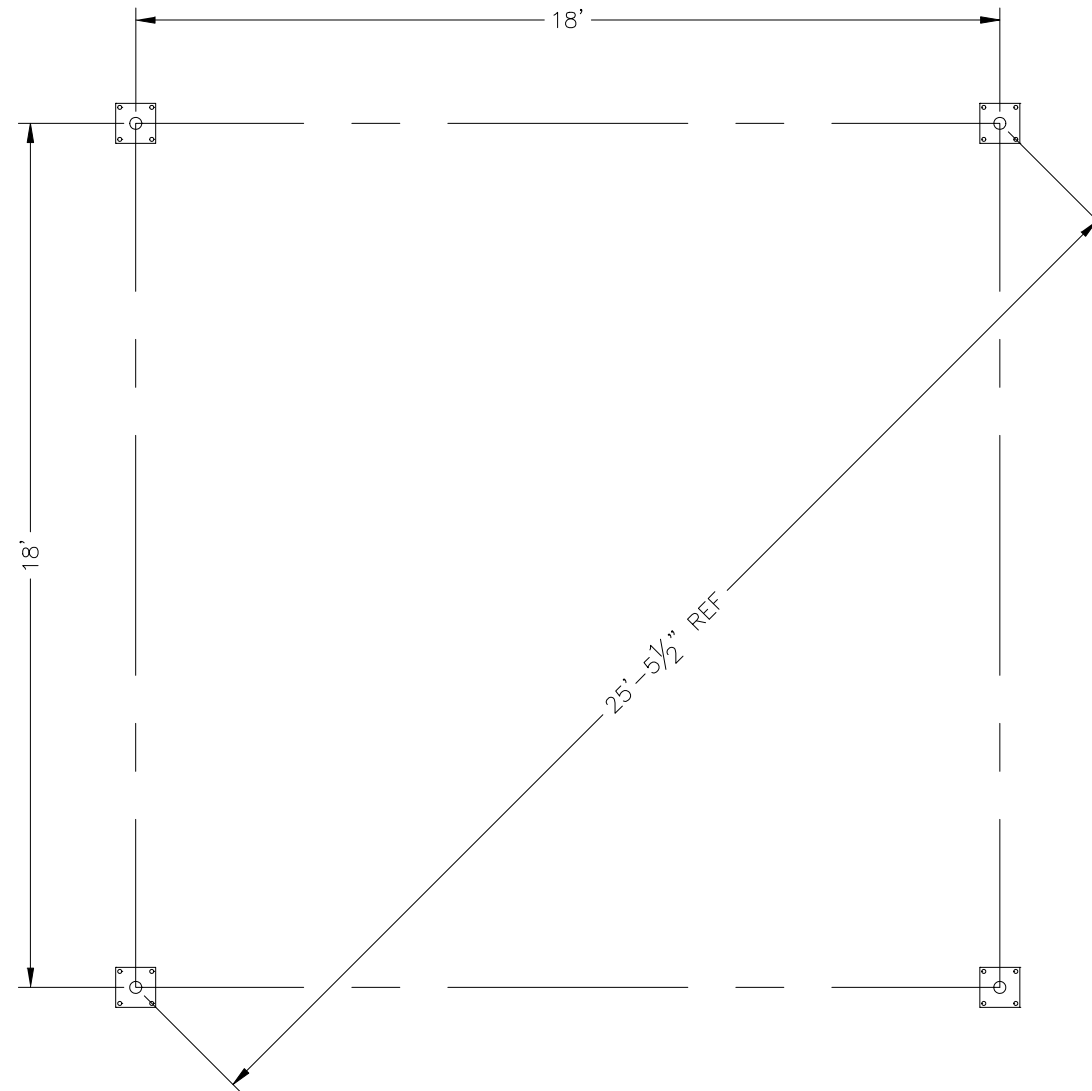


THESE FOUNDATION LOADS ARE FOR ESTIMATING PURPOSE ONLY.
THE ACTUAL LOADS WILL BE DETERMINED IN THE FINAL ENGINEERING

- NOTES:**
- TABLE SHOWS UNFACTORED SERVICE LOADS
 - A FOUNDATION DESIGN HAS NOT BEEN PERFORMED BY ICON SHELTER SYSTEMS INC.
 - A LICENSED ENGINEER FAMILIAR WITH SOIL CONDITIONS AT CONSTRUCTION SITE MUST PERFORM A FOUNDATION DESIGN.
 - THE STRUCTURE HAS BEEN ENGINEERED AS AN OPEN STRUCTURE.
 - CONSULT ICON SHELTER SYSTEMS INC. IF THE STRUCTURE IS TO BE ENCLOSED.
 - COORDINATES ARE LOCAL TO THE COLUMN

- DEFINITIONS:**
- DL = SERVICE LEVEL DEAD LOAD REACTION WITH THE GREATEST AXIAL LOAD
 - SL = SERVICE LEVEL SNOW LOAD REACTION WITH THE GREATEST AXIAL LOAD
 - W-UL = SERVICE LEVEL WIND LOAD REACTION WITH THE GREATEST UPLIFT LOAD
 - W-Y = SERVICE LEVEL WIND LOAD REACTION WITH THE GREATEST MAGNITUDE OF SHEAR IN THE LOCAL Y DIRECTION
 - W-Z = SERVICE LEVEL WIND LOAD REACTION WITH THE GREATEST SHEAR VALUE ACTING IN THE SAME DIRECTION AS THE DL SHEAR LOAD
 - E-Y = SERVICE LEVEL SEISMIC LOAD REACTION WITH THE GREATEST MAGNITUDE OF SHEAR IN THE LOCAL Y DIRECTION
 - E-Z = SERVICE LEVEL SEISMIC LOAD REACTION WITH THE GREATEST MAGNITUDE OF SHEAR IN THE LOCAL Z DIRECTION

LOADS TO FOUNDATION (KIPS, IN-KIPS)	FOUNDATION LOADS				
	AXIAL (Fx)	SHEAR (Fy)	SHEAR (Fz)	MOMENT (My)	MOMENT (Mz)
DL	1.00	-0.06	0.33	-15.82	-2.35
SL	3.12	0.30	1.12	-50.04	11.00
W-UPLIFT	-1.64	-0.40	-0.47	20.24	-24.07
W-FY	1.64	-0.40	0.47	-20.24	-24.07
W-FZ	0.57	-0.03	0.91	-57.99	-1.14
E-FY	0.03	-0.08	0.01	-0.55	-6.55
E-Z	0.04	0.00	0.08	-5.97	-0.06



PRELIMINARY: NOT FOR CONSTRUCTION

ICON
Shelter Systems Inc
DISTINCTIVE STEEL SHELTERS
WWW.ICONSHELTERS.COM
COPYRIGHT 2004, ICON SHELTER SYSTEMS, INC.
1455 LINCOLN AVE.
HOLLAND MI, 49423
616.396.0919
800.748.0985
616.396.0944 FX

Anchor Bolt Layout

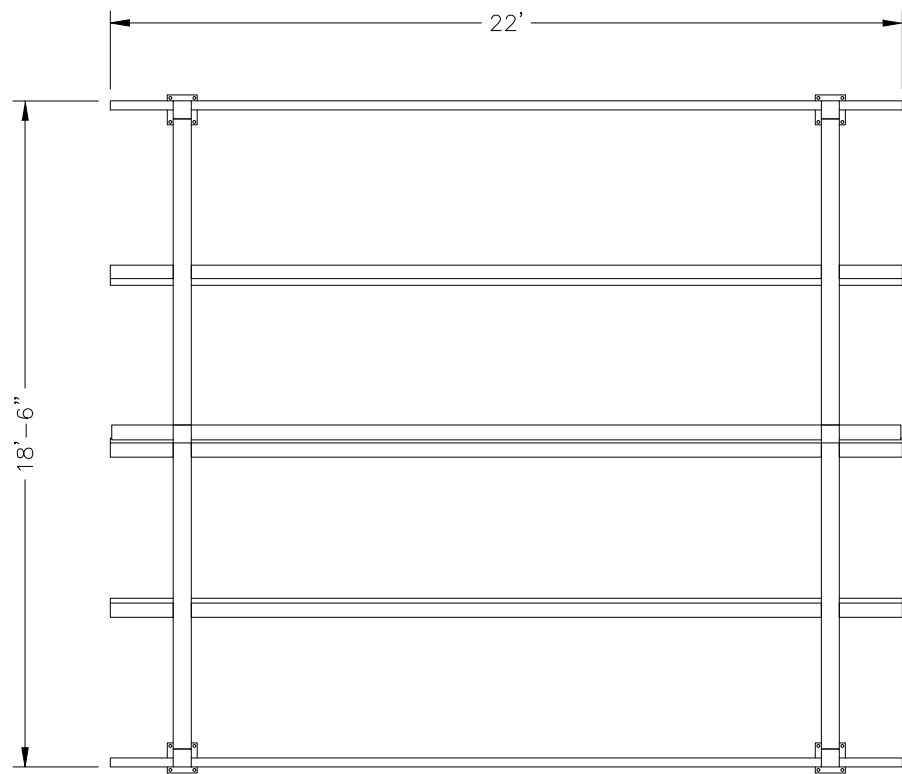
PRELIMINARY DRAWINGS SHOWN AS 6" BURIED
STANDARD BASE CONNECTION
COLUMN TYPE: A (6" BURIED)

OPTIONAL BASE CONNECTION
COLUMN TYPE: B (SURFACE MOUNT W/ COVERS)

DRAWN BY:	ACP
DATE:	1/31/2025
PRELIMINARY ID:	96311
REVISION:	A
BUILDING TYPE:	DS24X24M-P64
PROJECT NAME:	

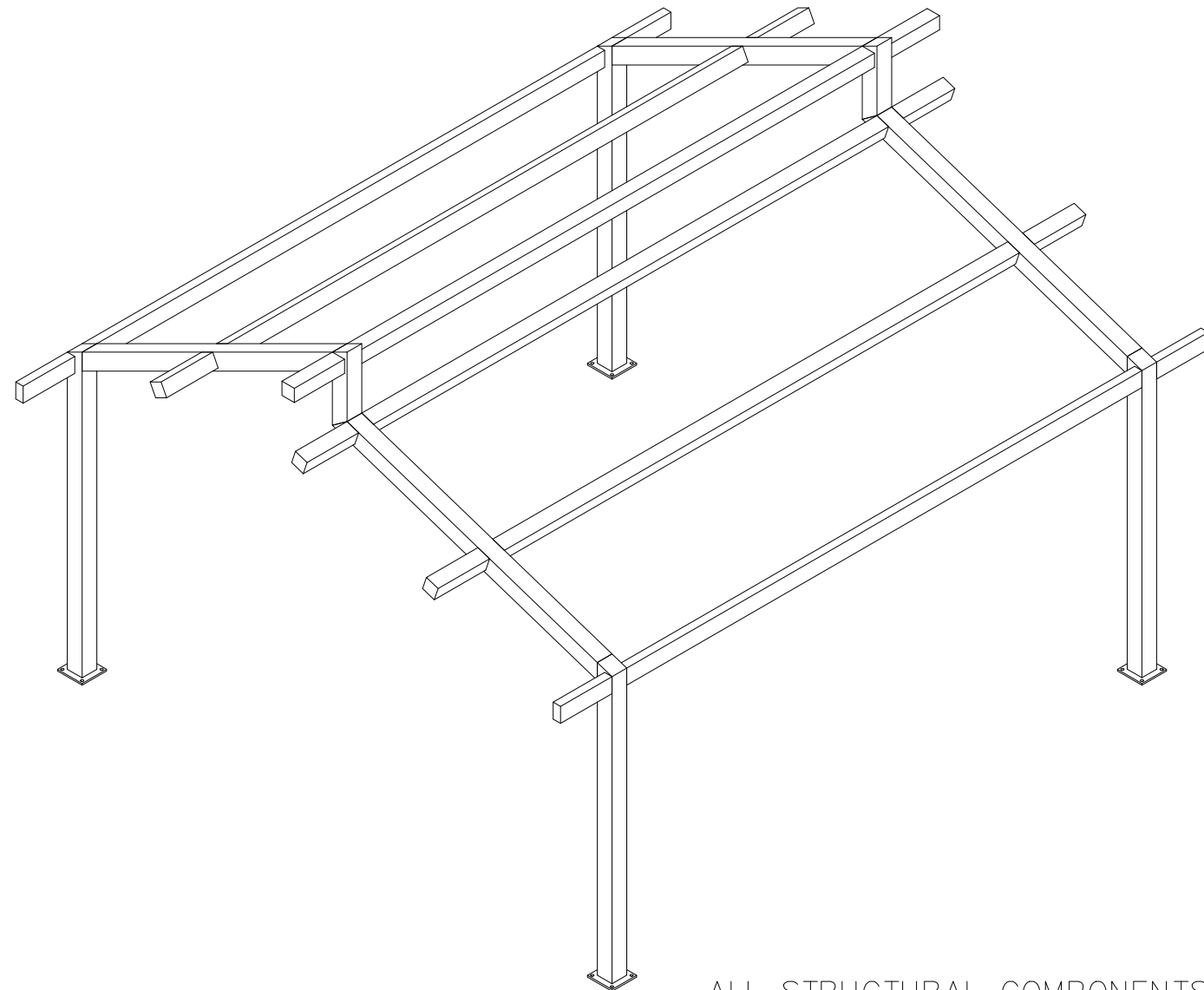
SHEET
2.0

DWG:DS\22X22\M-P6-25-90-19\Drawings\Preliminary\DS22M-P64-25-90-19~96311.DWG



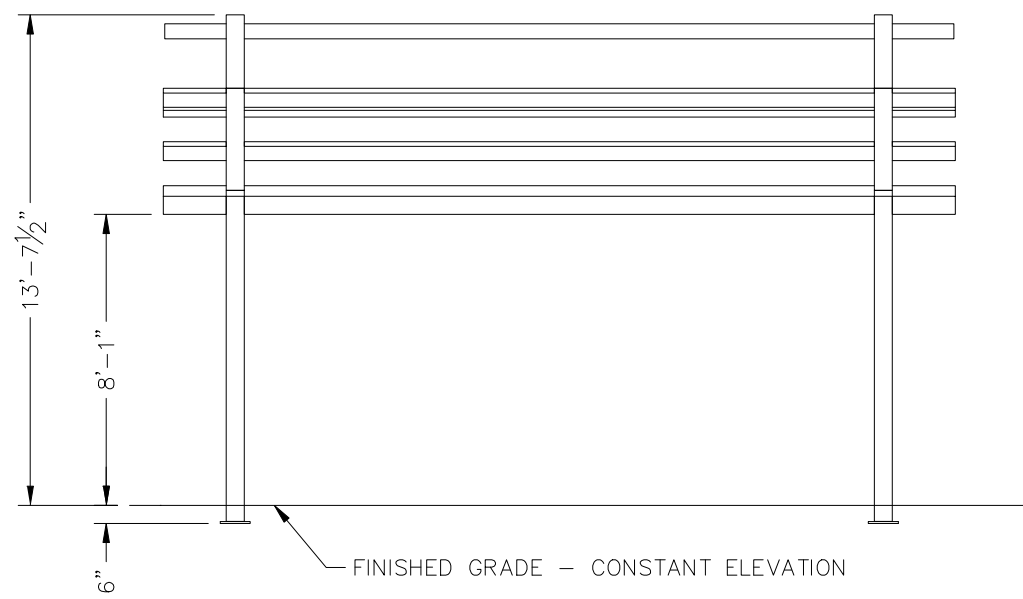
PRELIMINARY: NOT FOR CONSTRUCTION

ICON
 Shelter Systems Inc
 DISTINCTIVE STEEL SHELTERS
 WWW.ICONSHelters.COM
 COPYRIGHT 2004, ICON SHELTER SYSTEMS, INC.
 1455 LINCOLN AVE.
 HOLLAND MI, 49423
 616.396.0919
 800.748.0985
 616.396.0944 FX



ALL STRUCTURAL COMPONENTS WILL BE:
 TUBE: ASTM A500 GRADE B
 PLATE: ASTM A36
 BOLTS: ASTM A325
 NUTS: ASTM A563
 WELDING: GMAW

NOTE:
 COLUMN SIZE: HSS 6x6x3/16



Frame

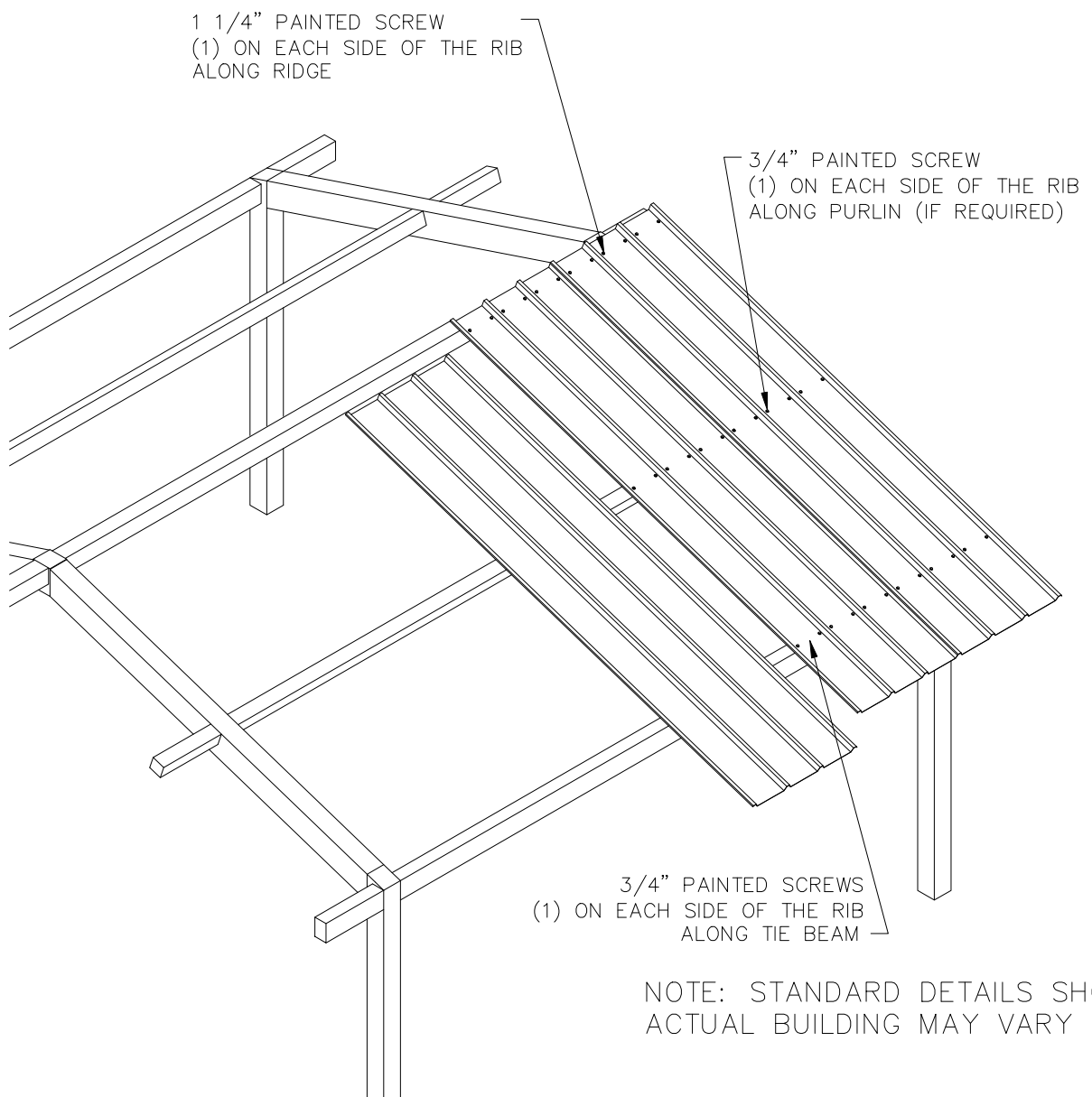
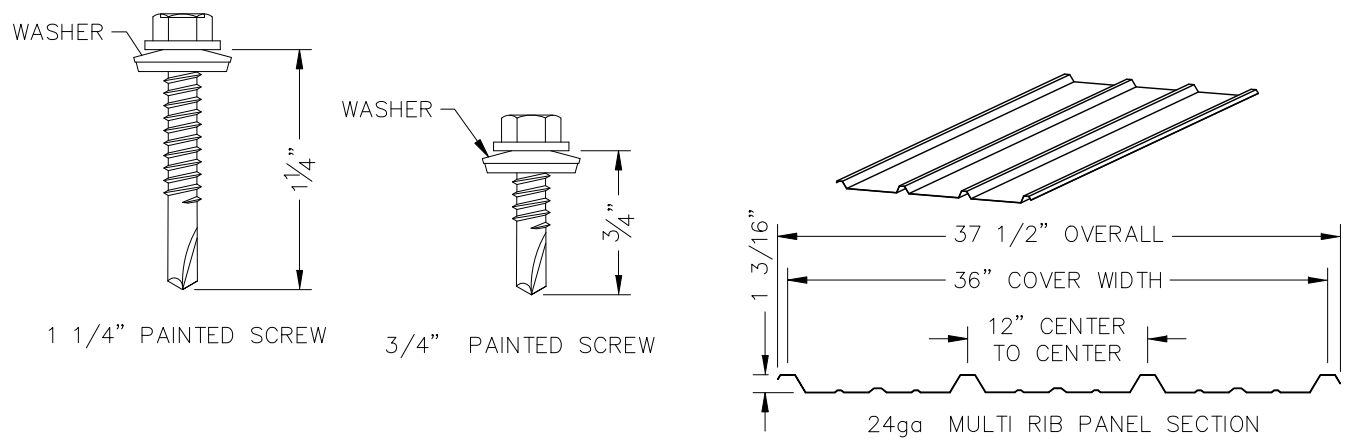
DRAWN BY:	ACP
DATE:	1/31/2025
PRELIMINARY ID:	96311
REVISION:	A
BUILDING TYPE:	DS24X24M-P64
PROJECT NAME:	

SHEET
 3.0

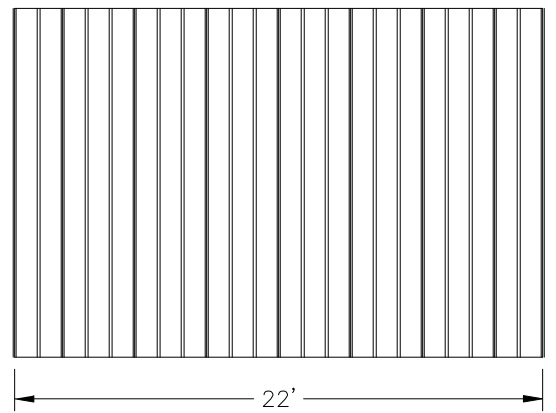
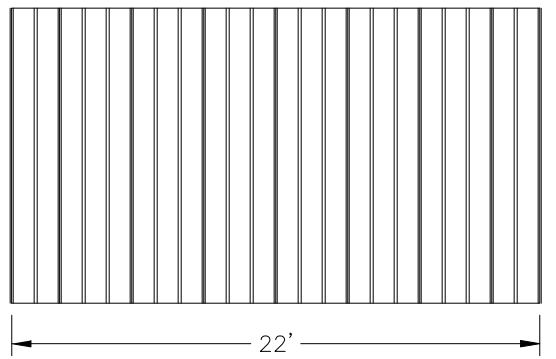
DWG:DS\22X22\M-P6-25-90-19\Drawings\Preliminary\DS22M-P64-25-90-19~96311.DWG

PRELIMINARY: NOT FOR CONSTRUCTION

ICON
 Shelter Systems Inc
 DISTINCTIVE STEEL SHELTERS
 WWW.ICONSHELTERS.COM
 COPYRIGHT 2004, ICON SHELTER SYSTEMS, INC.
 1455 LINCOLN AVE.
 HOLLAND MI, 49423
 616.396.0919
 800.748.0985
 616.396.0944 FX



NOTE: STANDARD DETAILS SHOWN
 ACTUAL BUILDING MAY VARY



Roof Layout

DRAWN BY:	ACP
DATE:	1/31/2025
PRELIMINARY ID:	96311
REVISION:	A
BUILDING TYPE:	DS24X24M-P64
PROJECT NAME:	

DWG:DS\22X22\M-P6-25-90-19\Drawings\Preliminary\DS22M-P64-25-90-19~96311.DWG

ELECTRICAL INFORMATION - DUAL SLOPE

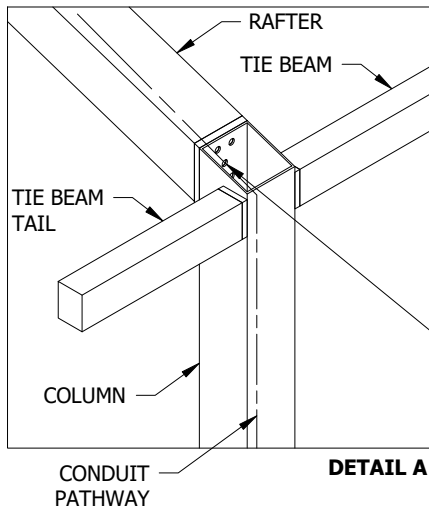
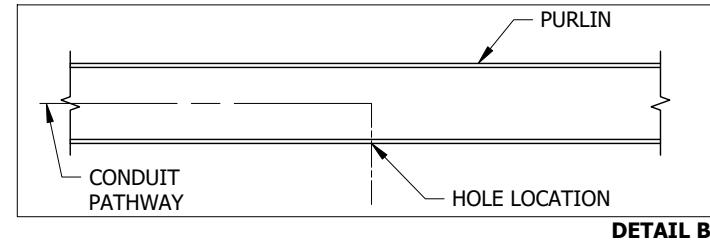
ICON'S STANDARD ELECTRICAL IS DESIGNED TO ACCOMMODATE Ø1/2" CONDUIT WITH A Ø3" INLET HOLE ON THE BOTTOM OF EACH COLUMN. THE CONDUIT PATHWAY RUNS THROUGH THE COLUMN, RAFTER, AND RIDGE BEAM THROUGH ALL BOLTED CONNECTIONS AS SHOWN. IF YOU HAVE SPECIAL ELECTRICAL REQUIREMENTS, PLEASE OUTLINE ANY CHANGES BELOW AS DESCRIBED.

PLEASE NOTE: DESIGN LIMITATIONS ON HOLE/CUTOUT SIZES MAY APPLY. ICON WILL REACH OUT TO DISCUSS ANY SUCH LIMITATIONS AS NEEDED.

NOTE: ICON SHELTER FRAME IS NOT UL LISTED TO ACT AS A CONDUIT FOR ELECTRICAL WIRING. CONSULT LOCAL BUILDING CODES WHEN PLANNING YOUR ELECTRICAL SYSTEM.

OPTIONAL EXIT HOLES

IF REQUIRED, EXIT HOLES FOR LIGHTING, ETC. CAN BE PLACED IN THE RAFTER AND/OR PURLIN. USE FRAME SHEET OF THIS PRELIMINARY TO SPECIFY REQUIRED EXIT HOLE LOCATIONS AND SIZE.

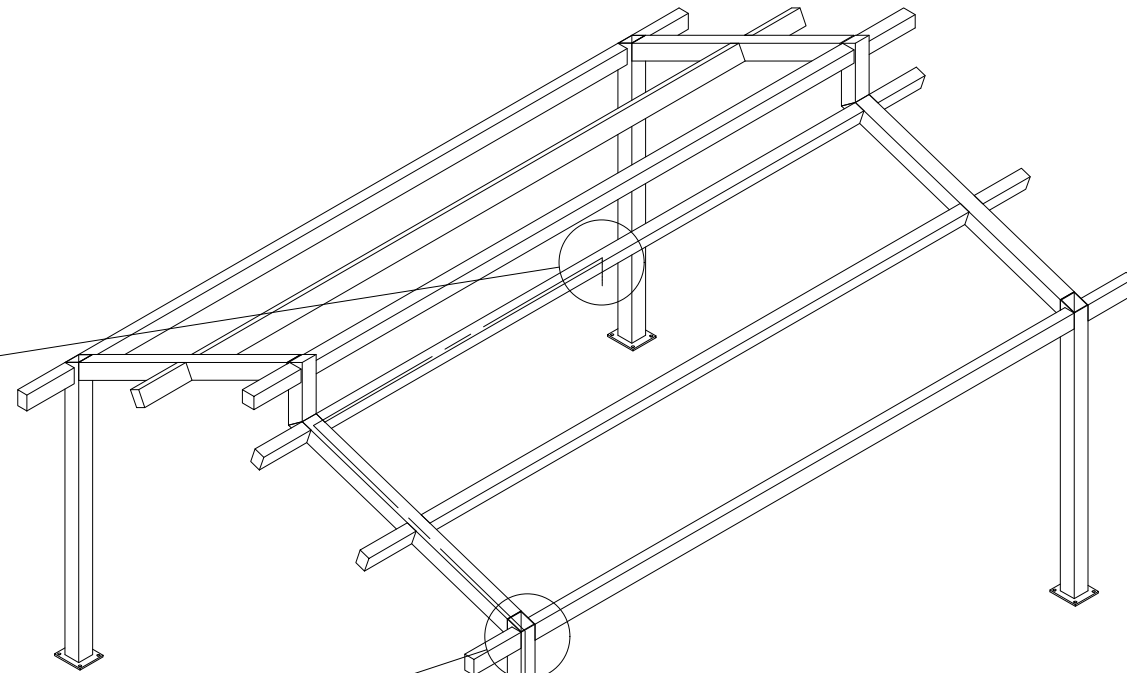


ICON PROVIDES A MINIMUM OF (1) 3/4" HOLE AT EACH CONNECTION FOR 1/2" CONDUIT. IF APPLICABLE, PLEASE SPECIFY REQUIRED CONDUIT SIZE: (CHARGES APPLY)

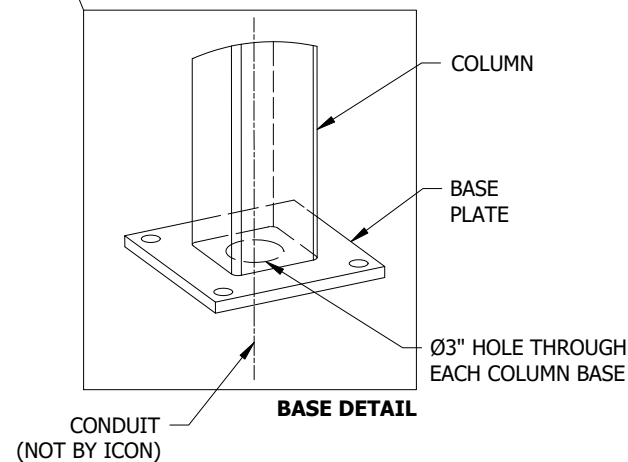
- 3/4" CONDUIT (1" HOLES)
- 1" CONDUIT (1 1/4" HOLES)
- OTHER (PLEASE SPECIFY)

NOTE: BUILDING DEPICTED ON THIS SHEET FOR ILLUSTRATION PURPOSES ONLY. ACTUAL LAYOUT AND FRAME MEMBER QUANTITIES VARY BY DESIGN. PLEASE REFER TO ELEVATION AND FRAME SHEETS IN THIS PRELIMINARY FOR ORDER-SPECIFIC CONFIGURATION.

PRELIMINARY: NOT FOR CONSTRUCTION



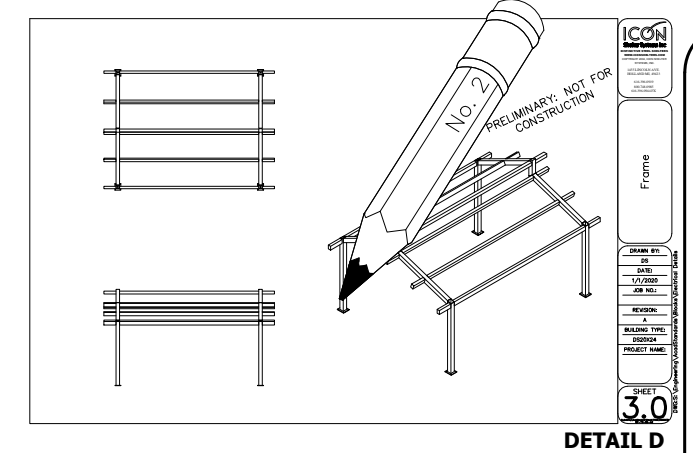
CONDUIT PATHWAY PROVIDED FOR EACH COLUMN.



STEPS:

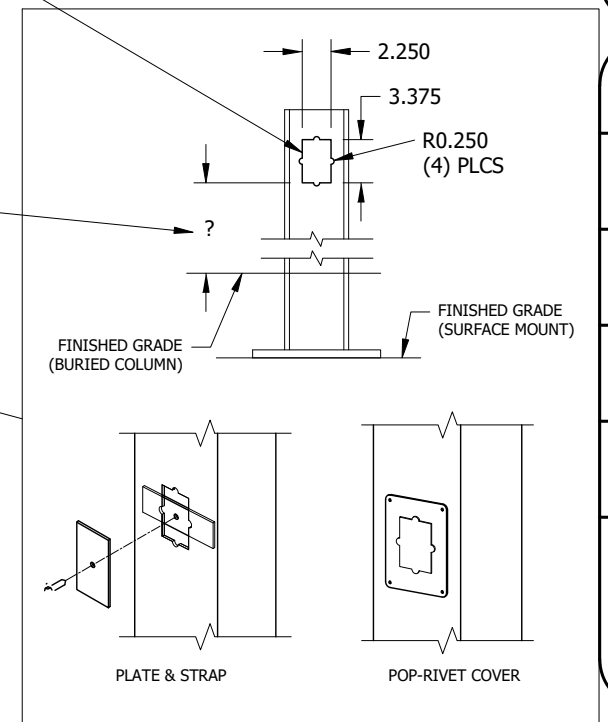
1. CONDUIT HOLE SIZE (DETAIL A)
2. ELECTRICAL EXIT HOLES (DETAIL B)
3. ELECTRICAL ACCESS & COVER PLATES (DETAIL C)
4. ELECTRICAL CONDUIT PATHWAY (DETAIL D)

IF REQUIRED, PLEASE DRAW THE NECESSARY ELECTRICAL CONDUIT PATHWAY ON THE FRAME SHEET OF THIS PRELIMINARY.



- (1) STANDARD CUTOUT SIZE SHOWN. SPECIFY IF OTHER SIZE REQUIRED.
- (2) CUTOUTS WILL BE ON INSIDE FACE OF COLUMN UNLESS OTHERWISE INDICATED ON FRAME SHEET.
- (3) SPECIFY HEIGHT ABOVE FINISHED GRADE FOR EACH CUTOUT AS SHOWN

OPTIONAL CUTOUTS
USE FRAME SHEET OF THIS PRELIMINARY TO SPECIFY REQUIRED CUTOUT LOCATIONS (CHARGES APPLY)
SEE REQUIRED INFO BELOW



- (4) COVER PLATES PROVIDED UPON REQUEST (CHARGES APPLY)
PLEASE SPECIFY TYPE AND QUANTITY REQUIRED:
- PLATE & STRAP
 - POP-RIVET COVER PLATE
- HOW MANY REQUIRED? _____

ICON
Shelter Systems Inc
DISTINCTIVE STEEL SHELTERS
WWW.ICONSHelters.COM
COPYRIGHT 2004, ICON SHELTER SYSTEMS, INC.
1455 LINCOLN AVE.
HOLLAND MI, 49423
616.396.0919
800.748.0985
616.396.0944 FX

Electrical

DRAWN BY:	ACP
DATE:	1/31/2025
PRELIMINARY ID:	96311
REVISION:	A
BUILDING TYPE:	DS24X24M-P64
PROJECT NAME:	

SHEET
5.0

Standard Steel Roof Colors

Kynar 500 coated roof panels with 24-gauge Galvalume® substrate. The underside of the roofing material is a standard, white-washed color.



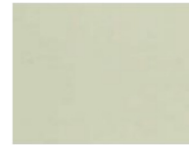
Regal White



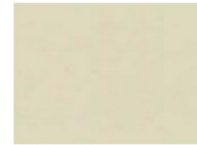
Bone White



Surrey Beige



Sandstone



Almond



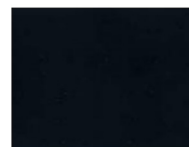
Ash Gray



Slate Gray



Charcoal



Matte Black



**Medium
Bronze**



Patina Green



Evergreen



**Mansard
Brown**



Colonial Red



Roman Blue



**Patrician
Bronze**



Terra Cotta



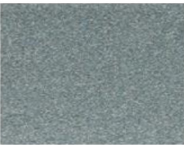
Brite Red



**Hartford
Green**



Brandywine



**Silver
Metallic**



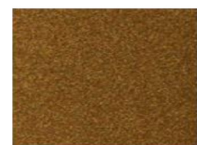
**Galvalume
Plus**



Light Stone



Tudor Brown



**Copper Penny
Metallic**



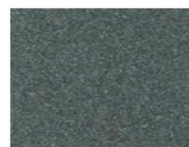
Dark Bronze



Regal Blue



Casco Orange



**Prewathered
Galvalume**



**Texas Silver
Metallic**



**Champagne
Metallic**



Buckskin

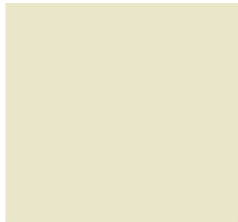
Notes:

Actual colors may vary from physical samples*

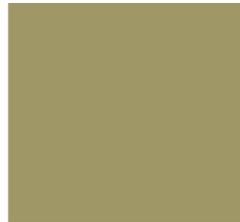
*Physical samples are available upon request.

Powder Coat Colors

Icon utilizes a super-durable TGIC powder coat over a liquid epoxy primer on every steel member.



RAL 1013
Oyster White



RAL 1019
Grey Beige



RAL 3001
Signal Red



RAL 3009
Oxide Red



RAL 5001
Green Blue



RAL 5005
Signal Blue



RAL 6000
Patina Green



RAL 6005
Moss Green



RAL 6026
Opal Green



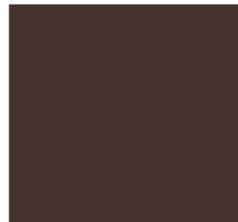
RAL 6028
Pine Green



RAL 7012
Basalt Grey



RAL 7044
Silk Grey



RAL 8017
Chocolate Brown



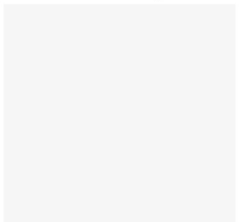
RAL 8019
Grey Brown



RAL 9005 w/ Clear
Jet Black (Glossy)



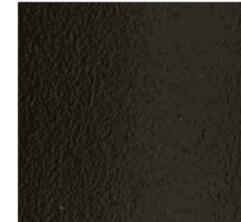
RAL 9005 Jet Black
(Matte)



RAL 9016
Traffic White



Brown Texture
PCT29118



Bronze Texture
PCT29101

Note:

Actual colors may vary from physical samples*

*Physical samples are available upon request.



Thanks