



February 11, 2022

Chad Bergeron
Assistant Utility Director
City of Cooper City Utilities Department
11791 SW 49 Street
Cooper City, Florida 33330

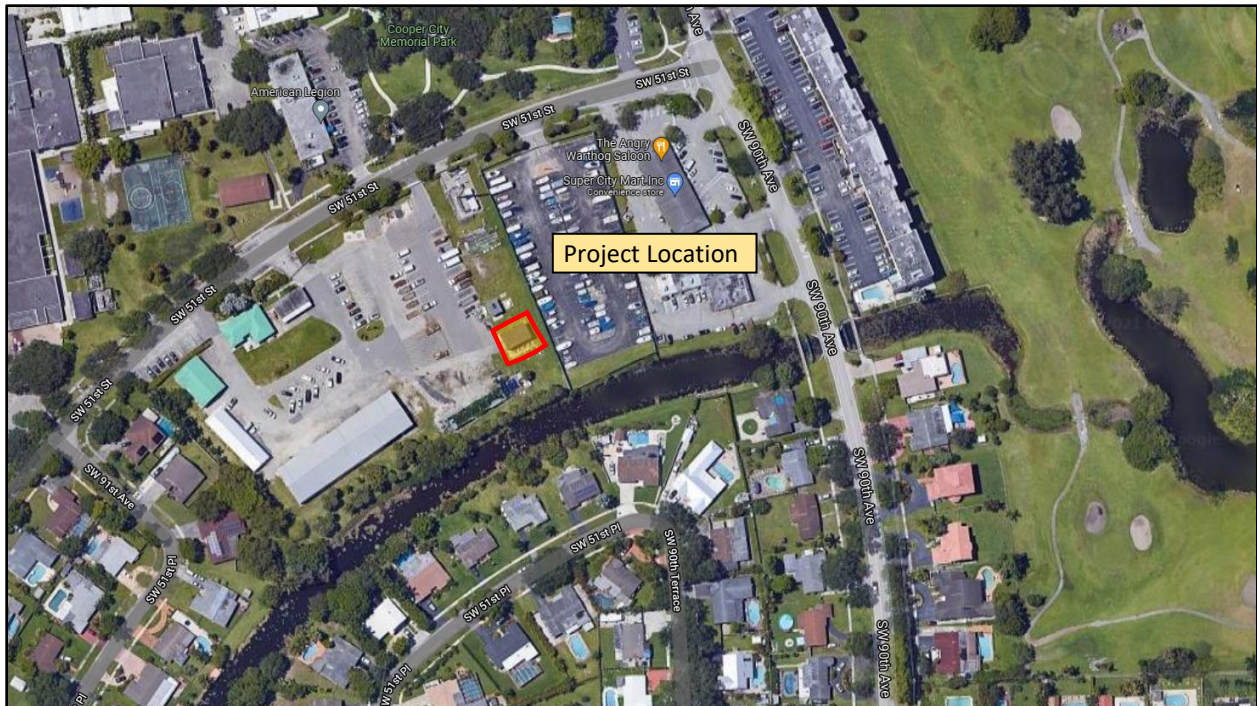
**Subject: Pump Station #55 Generator Replacement
CMA Proposal No. P21.016.003**

Dear Mr. Bergeron:

Chen Moore and Associates (CMA) is grateful for the opportunity to submit the attached Proposal for Professional Services to assist you with the design of the above-referenced project.

I. PROJECT BACKGROUND

The City's sewage Pump Station #55 has been in service since the late 1980's operating with most of the original equipment still in service. The City has requested CMA to provide a scope of services for the replacement of the electrical generator and its ancillary equipment.





I. SCOPE OF SERVICES

The scope of services our firm shall provide as per our recent discussions is as follows:

Task 1 – Engineering Plans

CMA will hire an electrical subcontractor for the design of the new improvements. Scope of Services include:

- a. Site visits and review of existing plans, reports and as-built documentation.
- b. Design of electrical components including power, control and lighting for the replacement of the electrical generator. The generator replacement will include removal of existing generator and the removal and replacement of the existing equipment in the generator room.
- c. The new generator will be installed outside of the existing generator room and will include a sound-attenuation weatherproof enclosure and sub-base fuel tank. The fuel tank is estimated to be 500 gallons.
- d. The new generator will re-feed the existing automatic transfer switch in the existing pump room.
- e. Opinion of Probable Cost for the proposed improvements.
- f. Permitting through the Building Department is included in this task.
- g. Contract Documents will be suitable for bidding, permitting and construction of the project.

Submittals:

1. 50% construction documents, specifications and opinion of probable cost
2. 100% construction documents, specifications and opinion of probable cost

Task 2 – Post Design Services

CMA shall perform post design services:

- a. Bidding Assistance – Consultant shall review bids upon City request during the procurement of the Project. Assistance may include, but not limited to, the following:
 - Response to questions raised by bidders.
 - Participate in up to one (1) meeting with City and potential bidders.
 - Evaluation of the technical aspects of the Contractor's proposals.
- b. Preconstruction - Consultant shall attend one pre-construction conference, review material shop drawings (engineering), respond to RFI's, and assist City prior to commencement of construction.
- c. Construction Observation – Consultant shall provide general observation of the work and verification of system testing for the engineering design. A total of four (4) site visits/meetings are anticipated. It is anticipated that the City will have an inspector at the job site during construction.
- d. Statements of Work Completion
 - Consultant shall attend a walk-through inspection (1) with City to generate an initial punch list and verify that punch list items were completed (substantial completion).



- After the substantial completion inspection, Consultant shall prepare a preliminary pump list.
- Consultant shall prepare a statement of work completion, and record drawings based on the contractor “as-built” drawings.
- Consultant will assist City in the close out and certification of the related utility systems.

The basis for the above scope of services and associated fee(s) are based on the following:

1. The total fees quoted in this proposal constitute a guaranteed price for the scope of services set forth herein. CMA commits that the scope of services shall be completed for the quoted price and that no change orders or additional compensation shall be requested by CMA during the performance of its duties and responsibilities pursuant to this proposal.
2. Topographic survey is not included. It is assumed the work can be performed without a survey. Consultant will incorporate information from available design plans, record drawings and field inspections of the existing conditions.
3. Pump design, forcemain, pressure pipe and appurtenances are excluded from the scope.
4. It is assumed permitting through EPGMD is not required.

Information to be provided by client

1. Copies of all relevant data, including correspondence, reports, plans, or information in its possession which may be beneficial to the work effort performed by the Consultant.
2. Any available as-built information of the existing utilities.
3. Access to the site.



II. **FEES**

Consultant shall schedule work upon receipt of signed approval for this project as required. Per discussions with your team, the goal is to start immediately upon receipt of a notice to proceed and official authorization from the Owner.

The total lump sum fee for this project will be divided as follows:

<u>Task(s)</u>	<u>Task Description</u>	<u>Lump Sum Fees</u>	<u>Hourly Fees</u>	<u>Total Fees</u>
Task 1	Engineering Plans	\$20,265.00	\$0.00	\$20,265.00
Task 2	Post Design Services	\$12,415.00	\$0.00	\$12,415.00
	PROJECT TOTAL	\$32,680.00	\$0.00	\$32,680.00

Should you have any questions, please do not hesitate to contact me at, my cell phone at 772-361-9759 or send me an electronic message at ddavila@chenmoore.com.

Respectfully submitted,

CHEN MOORE AND ASSOCIATES
Daniel Davila, P.E.
Director of Water and Sewer