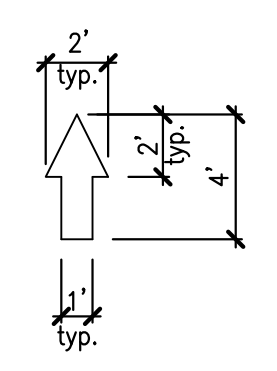


PAVEMENT MARKING & SIGNAGE PLAN

- NOTES:**
- ALL PAVEMENT MARKINGS ARE TO COMPLY WITH LATEST EDITION OF BROWARD COUNTY ENGINEERING STANDARDS AND LATEST EDITION OF THE MANUAL ON UNIFORM TRAFFIC CONTROL DEVICES (MUTCD).
 - ALL RADI AND DIMENSIONS ARE TO FACE OF CURB/EDGE OF PAVEMENT.
 - ALL SIGNAGE, EXTERIOR LIGHTING AND DUMPSTER ENCLOSURES SHALL REQUIRE A SEPARATE BUILDING PERMIT.
 - HANDICAP PARKING SPACES AND ACCESS AISLES SHALL BE LEVEL WITH SURFACE SLOPES NOT TO EXCEED 1:50 (2%) IN ALL DIRECTIONS.
 - ALL MARKINGS EXCEPT PARKING SPACE LINES SHALL BE THERMOPLASTIC AND 6" WIDE.
 - ALL ROOFTOP ACCESSORIES SHALL BE SCREENED FROM VIEW FROM ALL ADJACENT PROPERTIES AND RIGHT-OF-WAYS.
 - THE ELEVATIONS SHOWN HEREON ARE BASED ON NORTH AMERICAN VERTICAL DATUM OF 1988 (NAVD 88) AS ESTABLISHED FROM N.G.S. CONTINUOUSLY OPERATING REFERENCE STATION (C.O.R.S.) MIAMI WAAS 1 C.O.R.S. ARP, MIAMI TINT C.O.R.S. ARP AND WEST PALM C.O.R.S. ARP USING THE ONLINE POSITIONING USER SERVICE (O.P.U.S.) ON APRIL 26, 2016. TO CONVERT ELEVATIONS TO THE NATIONAL GEODETIC VERTICAL DATUM OF 1929 (N.G.V.D. 1929), ADD 1.55 FEET.
 - ALL SIDEWALKS SHALL BE A MINIMUM OF 5 FEET IN WIDTH.

- SITE PLAN LEGEND**
- TRANSFORMER BOX ON PAD
 - NUMBER OF PARKING SPACE
 - ACCESSIBLE PARKING SPACES
 - NEW ASPHALT DRIVEWAY
 - NEW CONC. PAVEMENT
 - NEW CONC. SIDEWALK

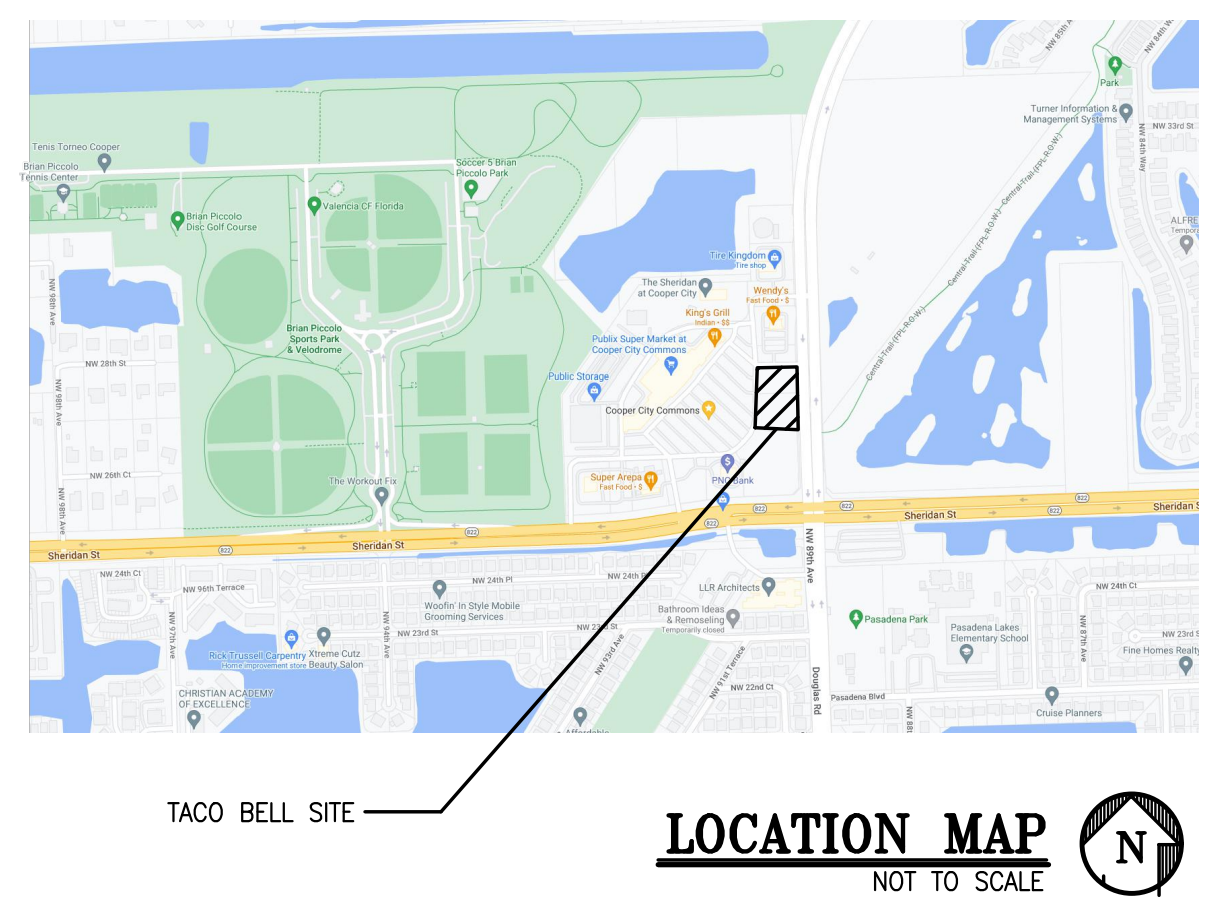
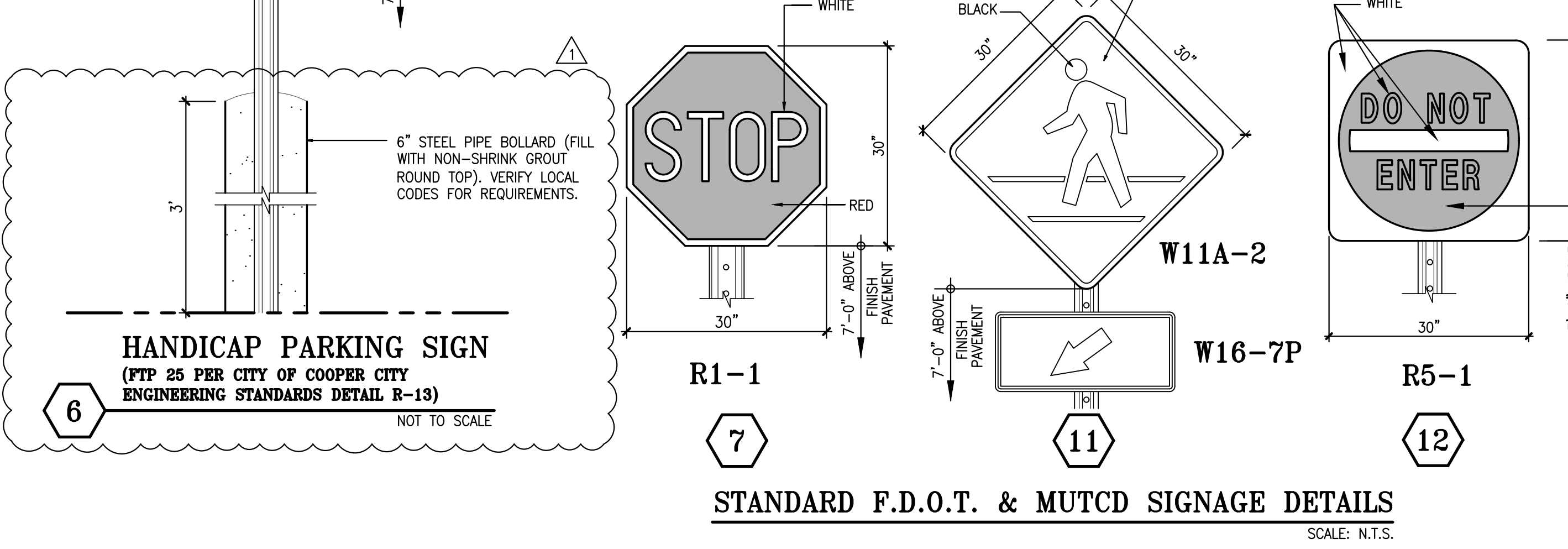
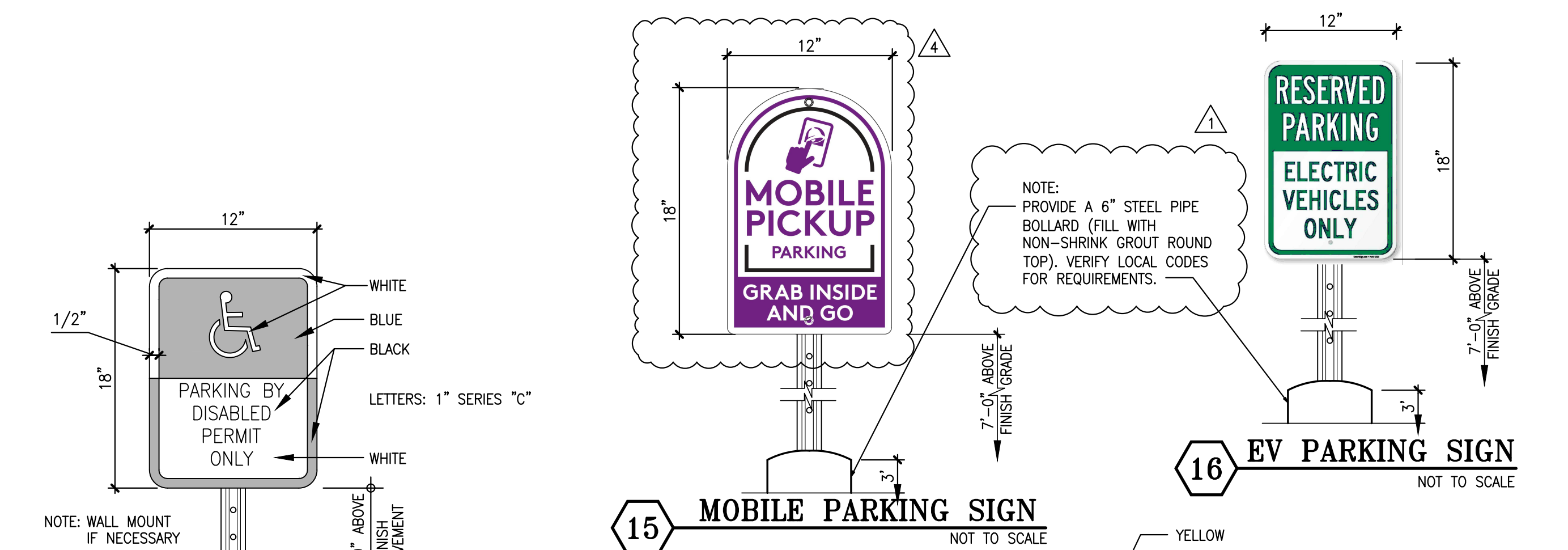
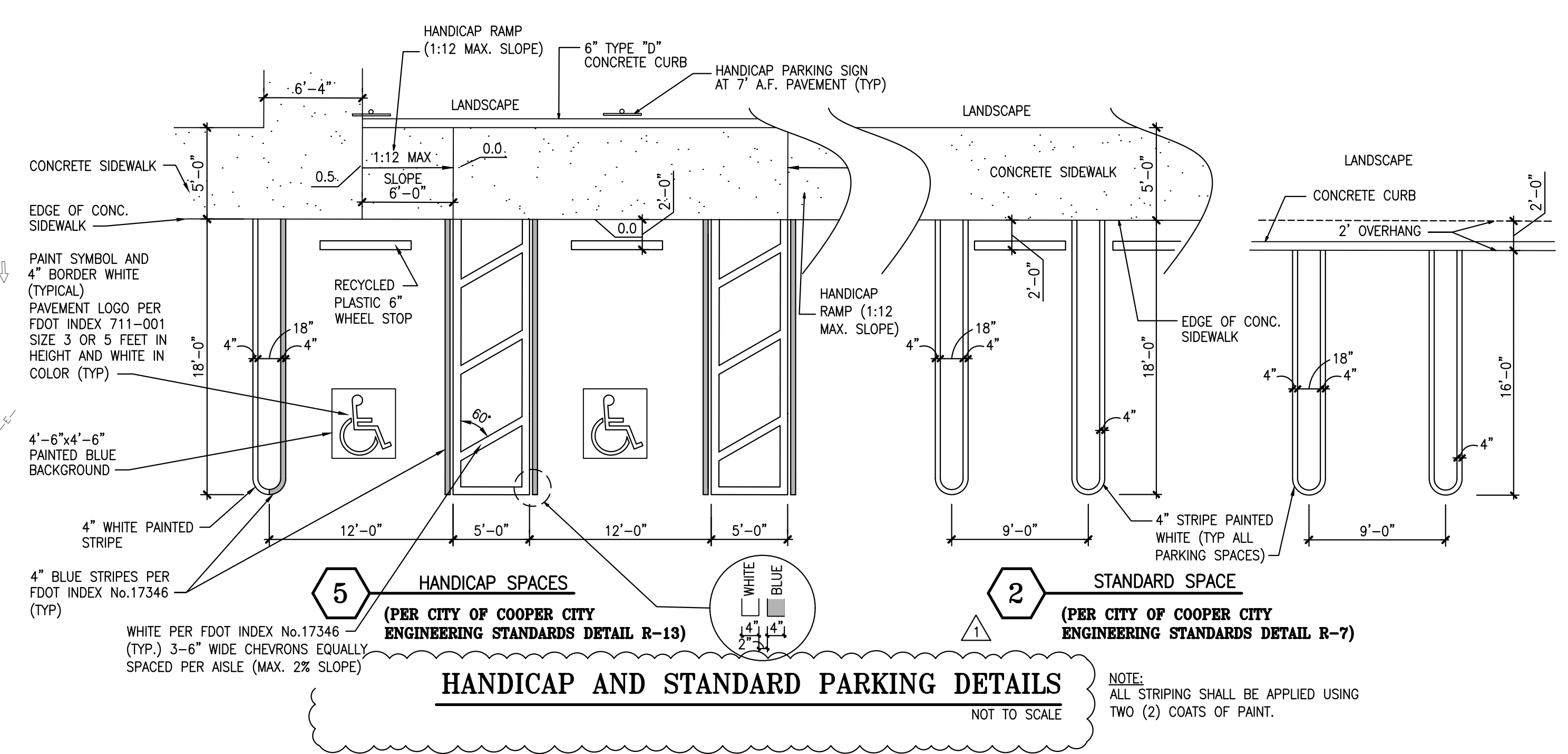
Sunshine811
Call 811 or visit sunshine811.com two full business days before digging to have buried facilities located and marked.
Check positive response codes before you dig!



3 PAINTED ARROWS

PER F.D.O.T. INDEX 17346 NOT TO SCALE

- CONSTRUCTION NOTES:**
- 24" STOP BAR WHITE (THERMOPLASTIC)
 - 2-4" WHITE STRIPES (TYPICAL AT PARKING SPACES)
 - TRAFFIC ARROWS PAINTED WHITE.
 - PEDESTRIAN CROSSING PER F.D.O.T. INDEX No. 17346
 - HANDICAP PARKING AS PER DETAIL.
 - HANDICAP SIGN 7'-0" A.F.P.
 - STANDARD F.D.O.T. HIGH INTENSITY "STOP" SIGN. R1-1 (30"x30")
 - 6" WHITE STRIPE (THERMOPLASTIC)
 - 6" WHITE STRIPES 45° @ 24" O.C.
 - 25-LF 6" DOUBLE YELLOW
 - PEDESTRIAN CROSSING SIGN
 - STANDARD F.D.O.T. HIGH INTENSITY "DO NOT ENTER" SIGN. R5-1 (30"x30")
 - 4" WHITE STRIPE (THERMOPLASTIC)
 - 6" WHITE STRIPE- 60"
 - MOBILE PICKUP PARKING SIGN
 - ELECTRIC VEHICLE PARKING SIGN
 - 18-LF 6" DOUBLE YELLOW



GROUP
CKE GROUP
INCORPORATED
engineering • architecture • planning
17190 ROYAL PALM BLVD.
SUITE #2
WESTON, FLORIDA 33326
PHONE: (305) 558-4124
FAX: (305) 826-0619
EB#0004432

EDUARDO L. CARCACHÉ
LICENSE
No. 31914
STATE OF FLORIDA
PROFESSIONAL ENGINEER
SEAL
EDUARDO L. CARCACHÉ
CIVIL ENGINEER-PE 31914
RICARDO J. PEREZ
ARCHITECT-AR 14985

This item has been digitally signed by Eduardo L. Carcache on the date adjacent to the seal.
Printed copies of the document are not considered signed and sealed and the signature must be verified on any electronic copies.

DATE	REMARKS
05-23-24	CITY COMMENTS
10-09-24	ADDRESS
10-24-24	CITY COMMENTS

CONTRACT DATE: MAY 29, 2023
BUILDING TYPE: ENDEAVOR PRE-PAY
PLAN VERSION:
BRAND DESIGNER: TIFFANIE SHIVELY
SITE NUMBER: 316151
STORE NUMBER: TB-592827
PA/PM: DIANA DE CICCO
DRAWN BY.: AG.
JOB NO.: CKE 1851

TACO BELL
COOPER CITY COMMONS
2500 PINE ISLAND RD.
COOPER CITY, FL 33024

TACO BELL
ENDEAVOR PRE-PAY
PAVEMENT MARKING & SIGNAGE PLAN
C-8
PLOT DATE:
SCALE: N.T.S.