



**VETTED**  
SECURITY SOLUTIONS



## CITY OF COOPER CITY – POOL & TENNIS CENTER CCTV

JOB #: 11775

Mike Reese  
(727) 902-1173  
[mreese@vettedsecuritysoluitons.com](mailto:mreese@vettedsecuritysoluitons.com)

## Icon Legend



Camera Mounting Location (C)



120v AC Power Source



Main Communications Enclosure (MCE)



120v AC Power Line | Conduit Path



Bridge Communications Enclosure (BCE)



New Pole



Battery Box (BB)

# Total Equipment Counts:

- NVR/Rack Components = TBD
- Mounting:
  - TBD
- Licensing:
  - TBD

Scope of work: Vetted Security Solutions (VSS) to provide and install (1) vertical wall mounted server rack. (VSS) to run one data line to existing comcast modem for outbound connection. VSS to rack and install new server and rack components. Assumes existing network connection speeds are sufficient for camera viewing, etc. Customer to move trophy case prior to installation for rack installation. Gerhold Electric to pull all radio/camera cables to this location.

Rack installation location





Total Equipment Counts:

- Camera = 3.0C-H6SL-BO1-IR
- Mounting:
  - N/A (Back box comes with camera)
- Licensing:
  - ACC7-ENT

Scope of work: Vetted Security Solutions (VSS) to provide and install (1) bullet camera outside of office facing pool entry door. Gerhold Electric to pull cable to new camera installation location from head end. VSS to configure camera and add camera to server.

Camera installation location

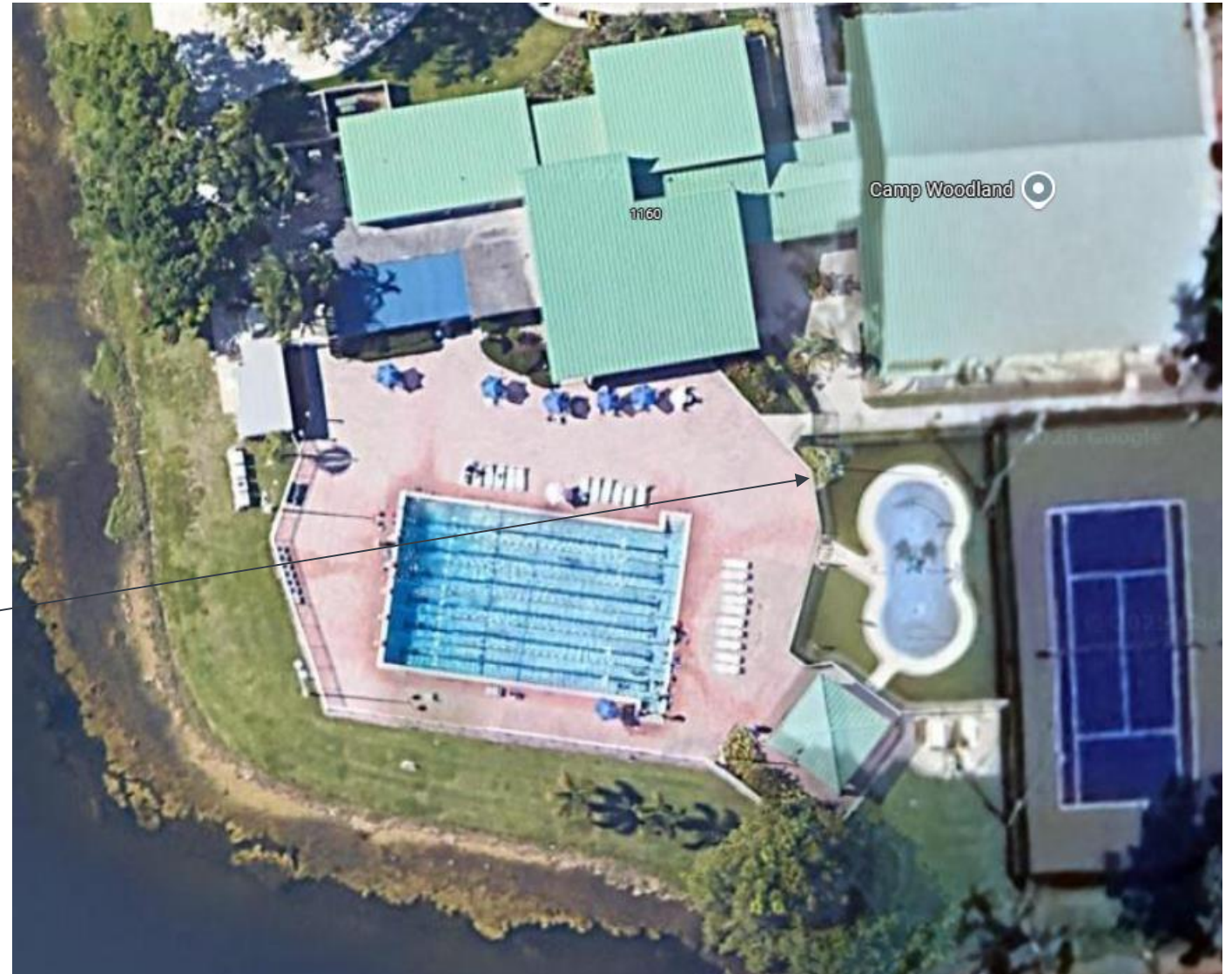


## Total Equipment Counts:

- Camera = 20C-H5A-4MH
- Mounting:
  - H5AMH-AD-PEND1
  - H5AMH-DO-COVR1
  - WLMT-1001
  - PLMT-1001
  - H4AMH-AD-IRIL1
- Licensing:
  - ACC7-ENT

Scope of work: Vetted Security Solutions (VSS) to provide and install (1) multisensor camera to capture the swimming pool area. Gerhold Electric to pull cable to new camera installation location from head end. VSS to configure camera and add camera to server.

Camera installation location





Total Equipment Counts:

- Camera = 3.0C-H6M-D2-IR
- Mounting:
  - H6M-MT-DCIL1
- Licensing:
  - ACC7-ENT

Scope of work: Vetted Security Solutions (VSS) to provide and install (1) dome camera to capture the lobby area. Gerhold Electric to pull cable to new camera installation location from head end. VSS to configure camera and add camera to server.

Camera installation location



Total Equipment Counts:

- Camera = 3.0C-H6M-D2-IR
- Mounting:
  - H6M-MT-DCIL1
- Licensing:
  - ACC7-ENT

Scope of work: Vetted Security Solutions (VSS) to provide and install (1) dome camera to capture the lobby area. Gerhold Electric to pull cable to new camera installation location from head end. VSS to configure camera and add camera to server.

Camera installation location





Total Equipment Counts:

- Camera = 20C-H5A-4MH
- Mounting:
  - H5AMH-AD-PEND1
  - H5AMH-DO-COVR1
  - WLMT-1001
  - H4AMH-AD-IRIL1
- Licensing:
  - ACC7-ENT

Scope of work: Vetted Security Solutions (VSS) to provide and install (1) multisensor camera to capture the east parking area. One of the camera heads to be pointed downward. Gerhold Electric to pull cable to new camera installation location from head end. VSS to configure camera and add camera to server.

Camera installation location





Total Equipment Counts:

- Radio = C058900C901A
- Mounting:
  - SMMB2A
- Licensing:
  - N/A

Scope of work: Vetted Security Solutions (VSS) to provide and install (1) radio pointed at the parking lot streetlight radio. Gerhold Electric to pull cable to new camera installation location from head end. VSS to configure camera and add camera to server.

Radio installation location



Exterior – Parking Lot Pole (A)  
Facing South

Total Equipment Counts:

- Camera = 32C-H5A-4MH
- Radio = C058900C901A x 2
- Mounting:
  - H5AMH-AD-PEND1
  - H5AMH-DO-COVR1
  - WLMT-1001
  - H4AMH-AD-IRIL1
  - SMMB2A x 2
- Licensing:
  - ACC7-ENT

Scope of work: Vetted Security Solutions (VSS) to provide and install (1) multisensor camera, (2) radios, and (1) battery back up to capture the parking area. Radios to be pointed at the building and parking lot (B) pole. Gerhold Electric to provide electrical work to power battery back up. VSS to configure camera and add camera to server.

Camera installation location





Exterior – Parking Lot Pole (B)  
Facing North

Total Equipment Counts:

- Camera = 32C-H5A-4MH
- Radio = C058900C901A x 1
- Mounting:
  - H5AMH-AD-PEND1
  - H5AMH-DO-COVR1
  - WLMT-1001
  - H4AMH-AD-IRIL1
  - SMMB2A x 1
- Licensing:
  - ACC7-ENT

Scope of work: Vetted Security Solutions (VSS) to provide and install (1) multisensor camera, (1) radio, and (1) Aetek switch. Radio to be pointed at parking lot (A) pole. Gerhold Electric to provide electrical work to power Aetek switch. VSS to configure camera/radio and add camera to server. Assumes constant 120VAC is available from panel at base of pole.

Camera installation location



## Total Equipment Counts:

- Camera = 15C-H5A-3MH
- Mounting:
  - H5AMH-AD-PEND1
  - H5AMH-DO-COVR1
  - WLMT-1001
  - PLMT-1001
  - H4AMH-AD-IRIL1
- Licensing:
  - ACC7-ENT

Scope of work: Vetted Security Solutions (VSS) to provide and install (1) multisensor camera to capture the entry area. Gerhold Electric to pull cable to new camera installation location from head end. VSS to configure camera and add camera to server.

Camera installation location

