

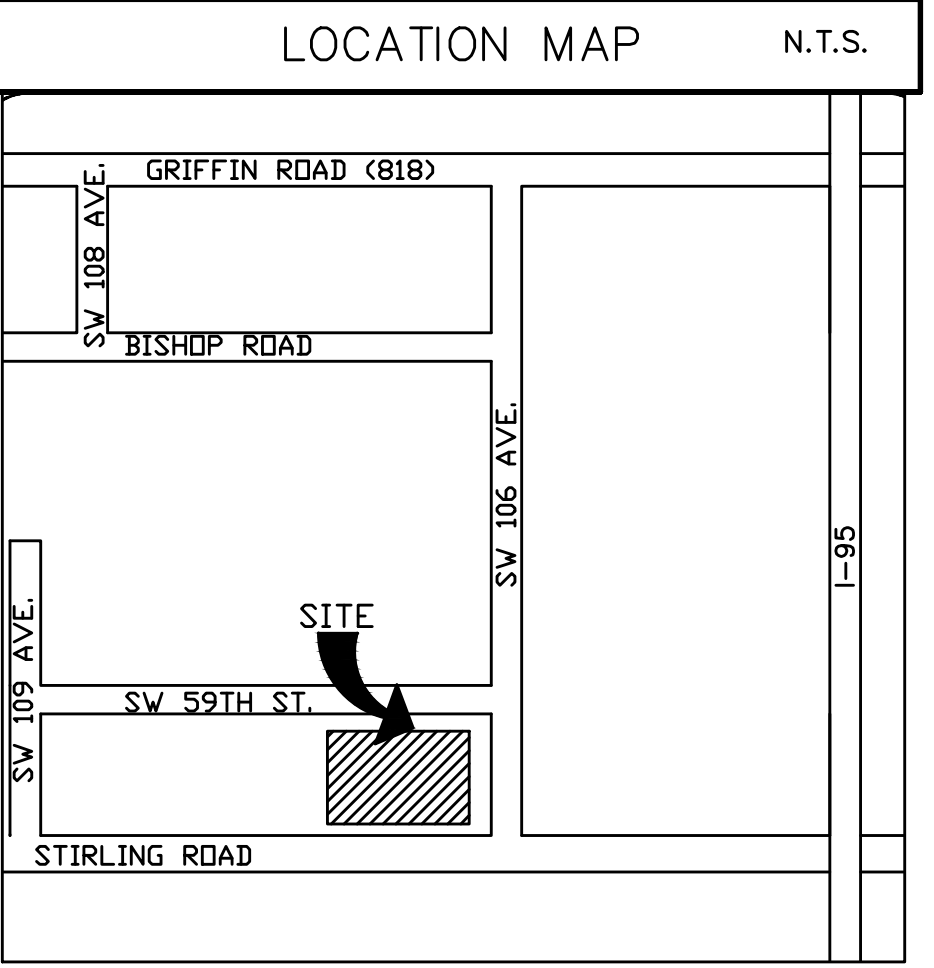
LEGAL DESCRIPTION

PARCEL A, NURI-AL-ISLAM, ACCORDING TO THE PLAT THEREOF, AS RECORDED IN PLAT BOOK 149, AT PAGE 28, OF THE PUBLIC RECORDS OF BROWARD COUNTY, FLORIDA.

TOGETHER WITH:

THE SOUTH 143.5 FEET OF THE EAST 75 FEET OF TRACT 39, AND THE NORTH 190.5 FEET OF THE EAST 75 FEET OF TRACT 40 (AS MEASURED FROM THE EAST LINE OF THE NORTHEAST QUARTER OF SECTION 31), FLORIDA FRUIT LANDS COMPANY'S SUBDIVISION No. 1 OF SECTION 31, TOWNSHIP 50 SOUTH, RANGE 41 EAST, ACCORDING TO THE PLAT THEREOF, AS RECORDED IN PLAT BOOK 2, AT PAGE 17, OF THE PUBLIC RECORDS OF DADE COUNTY, FLORIDA; LESS: THE EAST 15 FEET THEREOF.

SAID LANDS LYING AND SITUATE IN BROWARD COUNTY, FLORIDA, SUBJECT TO EXISTING EASEMENTS, RIGHTS-OF-WAY, COVENANTS, RESERVATIONS AND RESTRICTIONS OF RECORD, IF ANY.



LIGHT POLE DETAILS
N.T.S.

DUMPSTER DETAILS
N.T.S.

SITE DATA

SITE DATA	SQ. FT.	ACRE	% OF LAND
GROSS SITE AREA	182,864	4.20	100%
EXISTING ZONING	COUNTY (I-1)		
EXISTING & PROPOSED LAND USE	SCHOOL & A PLACE OF WORSHIP		

SITE DATA	SQ. FT.	% OF LAND
EXISTING SQUARE FOOTAGE GROUND COVERED BY PRIMARY SCHOOL BUILDING	5880.0	3.2%
EXISTING SQUARE FOOTAGE GROUND COVERED BY PRIMARY SCHOOL BUILDING COVERED WALKS	954.0	0.5%
EXISTING SQUARE FOOTAGE GROUND COVERED BY ADMIN BUILDING	2,225.0	1.2%
EXISTING SQUARE FOOTAGE GROUND COVERED BY CAFETERIA	5,950.0	3.3%
EXISTING SQUARE FOOTAGE GROUND COVERED BY KITCHEN	1,400.0	0.8%
EXISTING SQUARE FOOTAGE GROUND COVERED BY CAFETERIA COVERED WALKS	1,665.0	0.9%
EXISTING SQUARE FOOTAGE GROUND COVERED BY SCHOOL LIBRARY	3,645.0	2.0%
EXISTING SQUARE FOOTAGE GROUND COVERED BY SCHOOL LIBRARY COVERED PATIO	1,380.0	0.8%
EXISTING SQUARE FOOTAGE GROUND COVERED BY SCHOOL BUILDING 2	5,340.0	2.9%
EXISTING SQUARE FOOTAGE GROUND COVERED BY SCHOOL BUILDING 2 COVERED WALKS	1,400.0	0.8%
PROPOSED SQUARE FOOTAGE GROUND COVERED BY MOSQUE & COVERED WALKS	7,920.0	4.3%
PROPOSED SQUARE FOOTAGE GROUND COVERED BY SCHOOL BUILDING 3	11,150.0	6.1%
TOTAL SQUARE FOOTAGE GROUND COVERED BY BUILDINGS & COVERED WALKS (Allowed 3% Max.)	38,878.0	21.3%
TOTAL SQUARE FOOTAGE AT SIDEWALKS & SLABS	8,542.0	4.7%
TOTAL PAVED PARKING AND DRIVEWAYS	55,182.0	30.2%
TOTAL LANDSCAPE AREA	82,284.0	45.0%
TOTAL AREA	182,864.0	100.0%
PERVIOUS	82,284.0	45.0%
IMPERVIOUS	100,600.0	55.0%
TOTAL	182,864.0	100.0%

SET BACKS	MIN.(FT.)	PROVIDED
FRONT YARD (NORTH)	50'	81.25'
REAR (SOUTH)	50'	50.42'
SIDE (EAST)	25'	76'
SIDE (WEST)	25'	58.5'

BUILDING AREA DATA	EXISTING	PROPOSED	TOTAL	STUDENTS CAPACITY
EXISTING SQUARE FOOTAGE PRIMARY SCHOOL BUILDING	5880.0		5880.0	125
EXISTING SQUARE FOOTAGE GROUND COVERED BY PRIMARY SCHOOL BUILDING COVERED WALKS **	954.0		954.0	
EXISTING SQUARE FOOTAGE ADMIN BUILDING	2,225.0		2,225.0	
EXISTING SQUARE FOOTAGE CAFETERIA	5,950.0		5,950.0	
EXISTING SQUARE FOOTAGE KITCHEN	1,400.0		1,400.0	
EXISTING SQUARE FOOTAGE GROUND COVERED BY CAFETERIA COVERED WALKS **	1,665.0		1,665.0	
EXISTING SQUARE FOOTAGE SCHOOL LIBRARY	3,645.0		3,645.0	
EXISTING SQUARE FOOTAGE GROUND COVERED BY SCHOOL LIBRARY COVERED PATIO **	1,380.0		1,380.0	
EXISTING SQUARE FOOTAGE SCHOOL BUILDING 2	12,000.0		12,000.0	300
EXISTING SQUARE FOOTAGE GROUND COVERED BY SCHOOL BUILDING 2 COVERED WALKS **	1,400.0		1,400.0	
PROPOSED SQUARE FOOTAGE MOSQUE		11,927	11,927	
PROPOSED SQUARE FOOTAGE SCHOOL BUILDING 3		14,055	14,055	135
TOTAL BUILDING AREA (SQ. FT.)	36,499.0	25,982	62,481.0	560

BUILDING HEIGHT	MAX.(FT.)	PROVIDED (FT.)
PROPOSED MOSQUE **	20'	25' BLDG., 51'DOME, 70&100 TOWERS
PROPOSED MIDDLE SCHOOL BUILDING 3	40'	35'

** A VARIANCE APPLICATION WILL BE SUBMITTED FOR THE DOME AND THE MINARETS

STUDENTS CAPACITY

Elementary School	Existing	Proposed
Middle School	250	325
High School	75	135
Total	100	100
Total	425	560

PARKING CALCULATIONS	Previously approved SPA 2-15				Proposed Site Plan			
	Area Sq. Ft.	Parking Required Weekday	Parking Required Weekend	Area Sq. Ft.	Calculation	Parking Required Weekday	Parking Required Weekend	
School Library (3,645 Sq Ft) and Patio (1,380 Sq Ft)	5,025	1	0	5,025		1	0	
Administration Building	2,225	8	0	2,225		8	0	
School Building (1)	5,880	5	0	5,880		5	0	
School Building (2)	12,000	21	0	12,000		21	0	
Cafeteria / Multi-Purpose hall (5,950 Sq Ft) and Kitchen (1,400 sq ft)	7,350	5	60	7,350		5	60	
Propose Mosque	4,500	30	0	7,685	7685 SQ FT gross assembly area / 100	77	77	
Propose Middle School Building (3)	-	0	0	14,055	135 Pup / 10 plus 5 classrooms	19	0	
Total Parking Required	70	60	60			136	137	
Total Parking Provided (Paved)	62	62	62			145	145	
Total Parking Provided (Grass Parking)	14	14	14			0	0	
Total H.C. Parking Provided (Paved)	3	3	3			5	5	
Total Parking Required	79	79	79			150	150	

PARCEL "A"
P.B. 131 - PG. 29

PARCEL "C"
P.B. 147 - PG. 33

NOTES

- ALL REQUIRED OFFSITE ROAD WORK IMPROVEMENTS & SITE IMPROVEMENTS WILL BE COMPLETED PRIOR TO SUBMITTING FOR A TEMP OR FINAL C/O

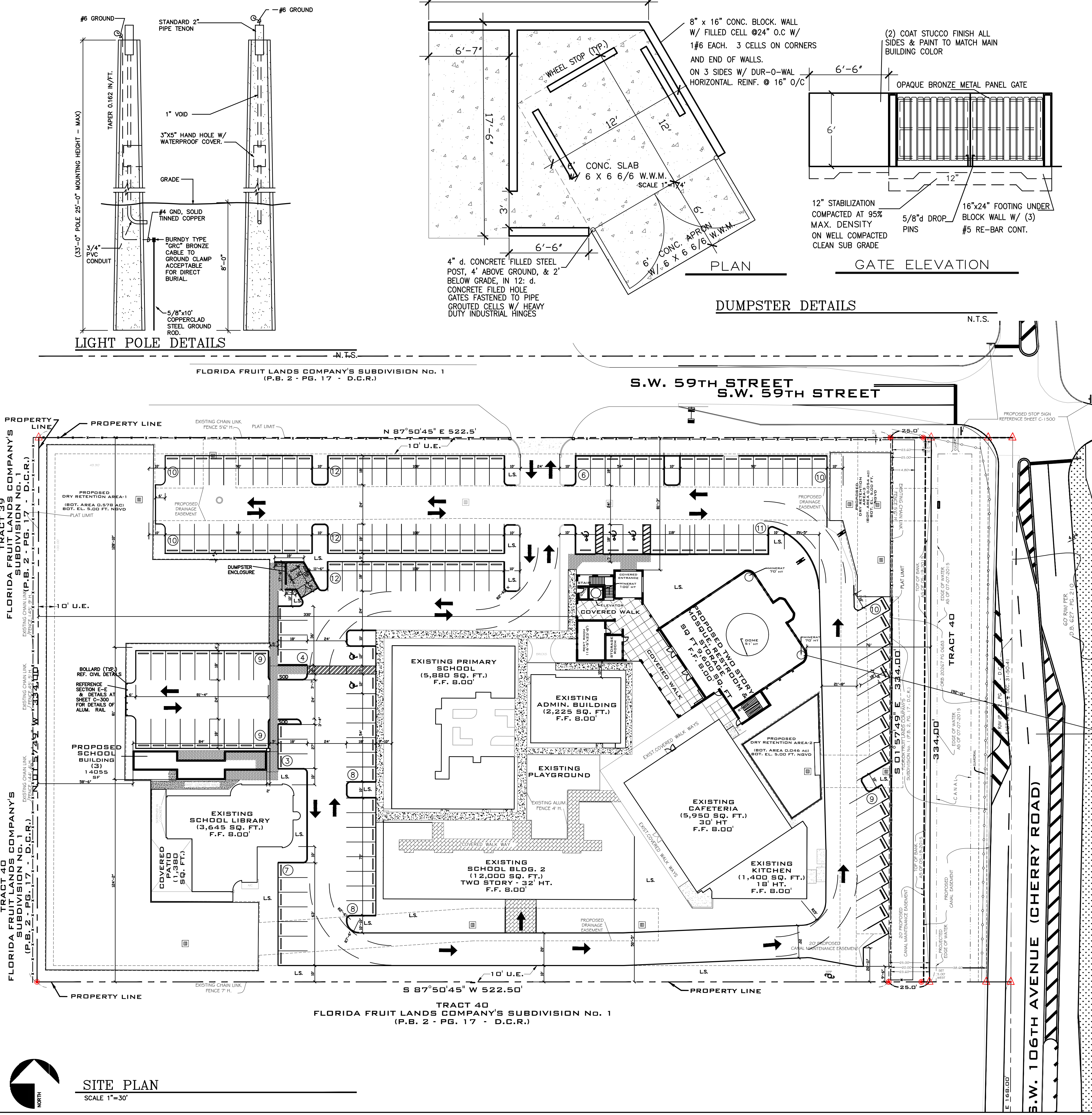
Revisions: _____ **Date:** _____

REV. # AS PER _____ 0/0/20

IG No: 20106
Design: SE
Drawn by: JM
Checked: SE
Date: 10/13/2021

SCALE 1"=20'

SHEET **SP-1**



SITE PLAN
SCALE 1"=30'

ALL DESIGN, DIMENSIONS AND PLANS INDICATED OR REFERENCED HEREIN ARE THE PROPERTY OF INNOVATIVE GROUP INC. AND SHALL BE KEPT IN CONFIDENCE AND NOT REPRODUCED OR TRANSMITTED IN ANY FORM OR BY ANY MEANS, ELECTRONIC OR MECHANICAL, INCLUDING PHOTOCOPYING, RECORDING, OR BY ANY INFORMATION STORAGE AND RETRIEVAL SYSTEM, WITHOUT THE WRITTEN PERMISSION OF INNOVATIVE GROUP INC. CONTRACTOR SHALL VERIFY AND BE RESPONSIBLE FOR ALL DIMENSIONS AND CONDITIONS AS SHOWN ON THESE DRAWINGS.

Innovative Group Inc.
Architecture Planning Interior Design
AA 0003558
RD. SUITE #100
POMERAY BEACH, FL 33060
TEL: 954-785-1314 FAX: 954-785-1315
Siah H. Elwanly, AIA, AF 007516

PROJECT: NUI SITE PLAN AMENDMENT
10600 S.W. 59th STREET COOPER CITY, FLORIDA 33328
OWNER: NURI-AL-ISLAM OF SOUTH FLORIDA, INC.

08/05/2022 P&Z 4