

**COOPER CITY CITY-WIDE TRAFFIC CALMING STUDY**

PRESENTATION • DECEMBER 12, 2023



**THE CORRADINO GROUP**

## City-Wide Traffic Calming Update (Introduction)

- Traffic Calming Study was completed along **51 corridor segments** within the City.
- The corridor segment locations were approved by City staff.
- Criteria and Standards:
  - Manual of Uniform Minimum Standards for Design, Construction and Maintenance for Streets and Highways. (**2018 FLORIDA GREENBOOK**).
  - City of Cooper City Code of Ordinance Article IV *Traffic Calming Devices Sec. 17-38 Public Roads*.



# Traffic Data Collection & Evaluation

- 72-hour Bi-directional Speed and Volume data collected at the 51 road segment locations.
  - Traffic Data was collected between mid-May and mid-June 2023.
- 5-year Crash Review (8/01/2018 to 7/31/2023).
- Field Reviews completed along corridors with 85<sup>th</sup> Percentile Speeds that Exceed the Posted Speed.



## Corridor Segments of Interest

Street Name	Limits	Posted Speed	85 <sup>th</sup> Percentile Speed	MPH Over 85 <sup>th</sup> Percentile	Volume
SW 118 <sup>th</sup> Avenue	SW 49 <sup>th</sup> Street to SW 52 <sup>nd</sup> Street	25	34	9	2,716
Hiatus Road	Stirling Road to SW 55 <sup>th</sup> Street	30	45	15	307
Stonebridge Parkway	NE Lake Boulevard to SE Lake Boulevard	30	38	8	2,385
SW 118 <sup>th</sup> Avenue	Griffin Road to SW 49 <sup>th</sup> Street	25	33	8	4,229
SW 106 <sup>th</sup> Avenue	Stirling Road and Griffin Road	35	47	12	5,175
SW 52 <sup>nd</sup> Street	94 <sup>th</sup> Avenue to SW 95 <sup>th</sup> Avenue	25	27	2	3,180
Hiatus Road	Sheridan Street to NE Lake Boulevard	40	46	6	12,319

# SW 118<sup>th</sup> Avenue - SW 49<sup>th</sup> Street to SW 52<sup>nd</sup> Street

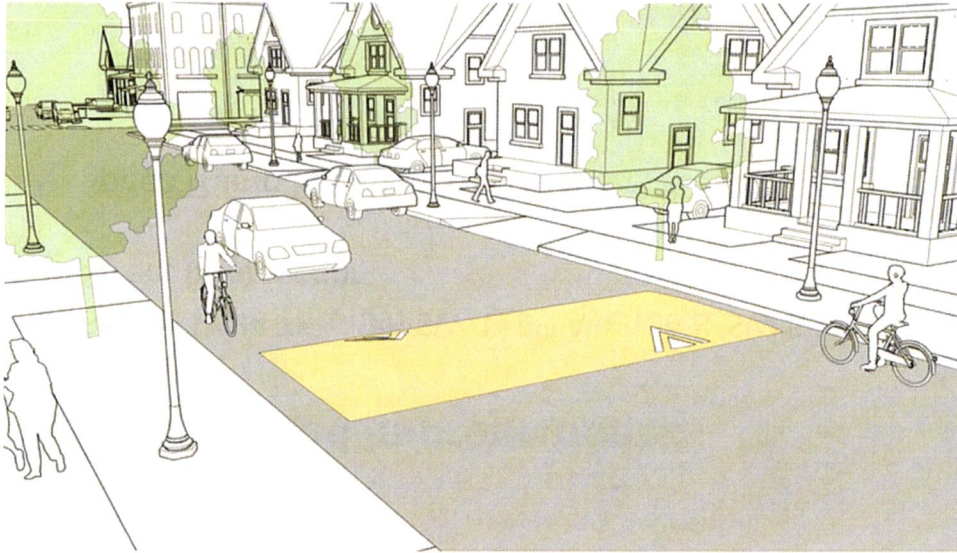
Posted Speed	25 MPH
85 <sup>th</sup> Percentile	34 MPH
MPH Over 85 <sup>th</sup> Percentile	9
Volume	2,716

## Recommended Improvements:

- Speed Table Through SW 118<sup>th</sup> Avenue & SW 50<sup>th</sup> Street Intersection
- Speed Hump Between SW 51<sup>st</sup> Court & SW 50<sup>th</sup> Street



# SW 118<sup>th</sup> Avenue - SW 49<sup>th</sup> Street to SW 52<sup>nd</sup> Street



# Hiatus Road - Stirling Road to SW 55<sup>th</sup> Street

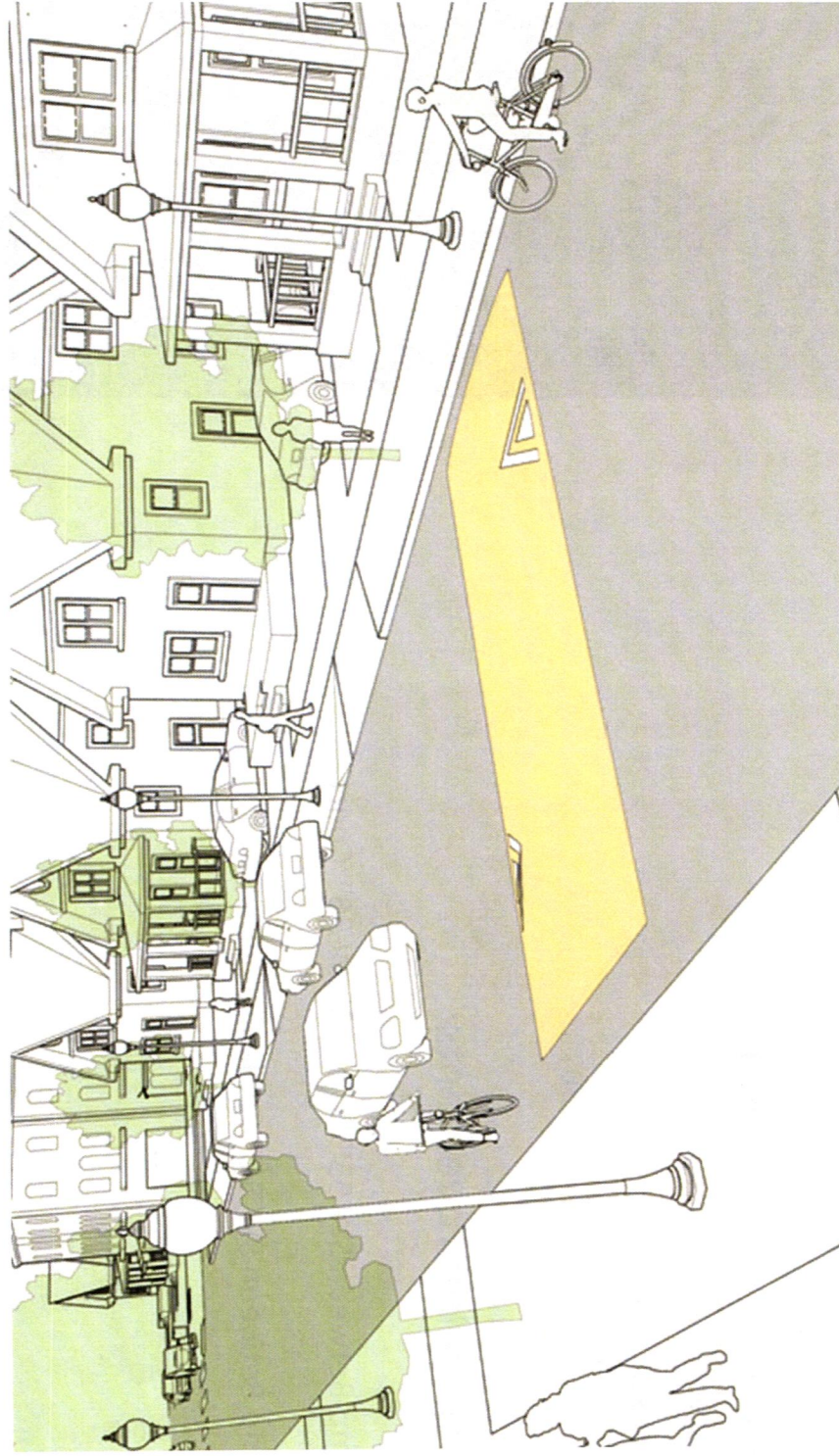
Posted Speed	30 MPH
85 <sup>th</sup> Percentile	45 MPH
MPH Over 85 <sup>th</sup> Percentile	15
Volume	307

## Recommended Improvements:

- Speed Hump Between SW 55<sup>th</sup> Street & SW 56<sup>th</sup> Court
- Speed Hump Between SW 57<sup>th</sup> Circle & SW 59 Street



# Hiatus Road - Stirling Road to SW 55<sup>th</sup> Street



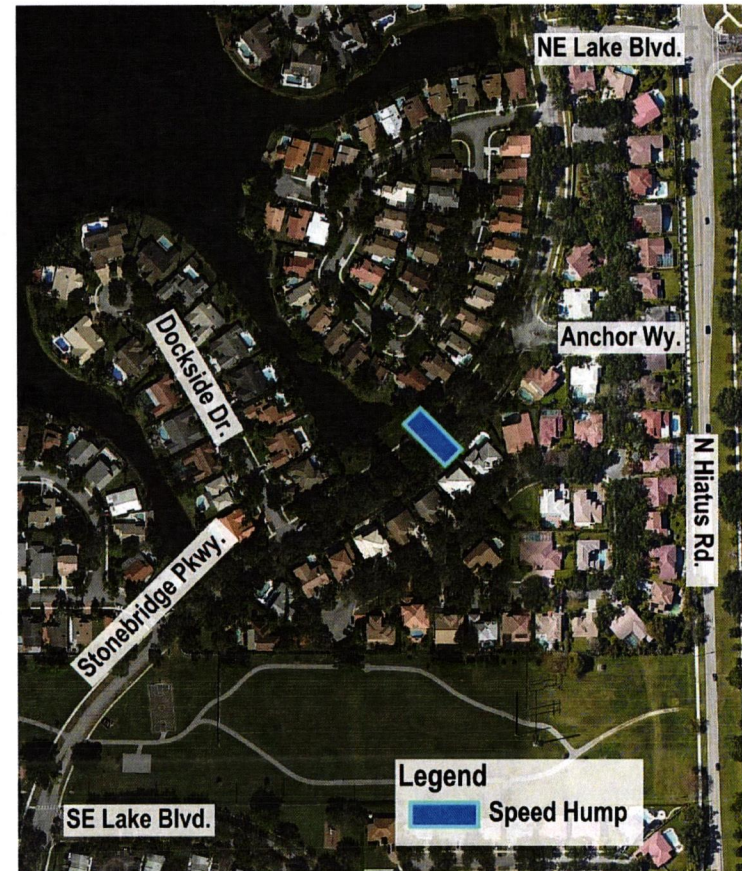


# Stonebridge Parkway - NE Lake Boulevard to SE Lake Boulevard

Posted Speed	30 MPH
85 <sup>th</sup> Percentile	28 MPH
MPH Over 85 <sup>th</sup> Percentile	8
Volume	2,385

## Recommended Improvements:

- Speed Hump Between Anchor Way & Dockside Drive



Stonebridge Parkway - NE Lake Boulevard to SE Lake Boulevard



# SW 106<sup>th</sup> Avenue Between Stirling Road and Griffin Road

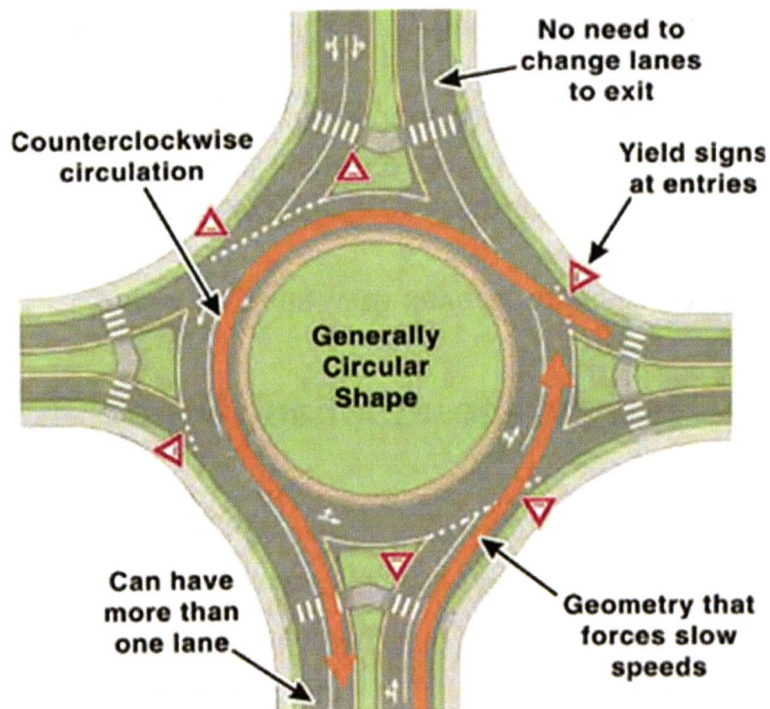
Posted Speed	35 MPH
85 <sup>th</sup> Percentile	47 MPH
MPH Over 85 <sup>th</sup> Percentile	12
Volume	5,175

## Recommended Improvements:

- Lane Narrowing with Pavement Marking along the Entire Corridor
- At Grade Texture Pavement at:
  - SW 106<sup>th</sup> Avenue & SW 49<sup>th</sup> Place
  - SW 106<sup>th</sup> Avenue & SW 57<sup>th</sup> Place
- Roundabout or Slightly Raised Texture Pavement at SW 106<sup>th</sup> Avenue & SW 51<sup>st</sup> Street



# SW 106<sup>th</sup> Avenue Between Stirling Road and Griffin Road



## Corridor Segments W/No Proposed Improvements

Street Name	Limits	Posted Speed	85 <sup>th</sup> Percentile Speed	MPH Over 85 <sup>th</sup> Percentile	Volume
SW 52 <sup>nd</sup> Street	94 <sup>th</sup> Avenue to SW 95 <sup>th</sup> Avenue	25	27	2	3,180
Hiatus Road	Sheridan Street to NE Lake Boulevard	40	46	6	<b>12,319</b>

- SW 52<sup>nd</sup> Street between 94<sup>th</sup> Avenue to SW 95<sup>th</sup> Avenue
  - 0 MPH Over Posted Speed Limit (Eastbound)
  - 3 MPH Over Posted Speed Limit (Westbound)
  - 8 total Crashes within the 5-year review: 1-Pedestrian, 3-Angle, 2-Sideswipe, 2-Backed into. No Fatalities.
- Hiatus Road between Sheridan Street to NE Lake Boulevard
  - Roundabout With the Intersection at NE Lake Boulevard is Under Planning Stages

## Traffic Calming Improvement Plan General Costs at Corridor Segments of Interest (Draft)

Traffic Calming Improvements	Unit Cost	Contingency (15 %)	Design Permitting & Mobilization (30 %)	Total Cost
Mini Roundabout*	\$200,000	\$30,000	\$60,000	\$290,000
Raised Speed Table/Intersection**	\$100,000	\$15,000	\$30,000	\$145,000
Speed Hump ***	\$ 35,000	\$5,250	\$10,500	\$50,750
At Grade Texture Pavement Through Intersection ****	\$ 50,000	\$7,500	\$15,000	\$72,500
Lane Narrowing (Pavement Markings)*****	About \$1.75 per SF, Including M&R 1"			

- \*Mini Roundabout (Neighborhood Traffic Circle) is proposed at the SW 106th Avenue and SW 51st Street intersection (subject to Feasibility Study)
- \*\* Raised Speed Table/Intersections are proposed at the SW 118th Avenue and SW 50th Street intersection
- \*\*\* Speed Humps are proposed at the SW 118th Avenue between SW 51st Court and SW 50th Street; Hiatus Road between SW 55th Street and SW 56th Court; Hiatus Road between SW 57th Circle and SW 59th Street; Stonebridge Parkway between Anchor Way and Dockside Drive
- \*\*\*\* Textured Pavement with Pavement Marking and Signage (Lane Narrowing) proposed at the SW 106th Avenue and SW 49th Place intersection; SW 106th Avenue and SW 57th Place intersection