



AN ARTERA COMPANY

November 14, 2024

TO: Michael Stanton Utilities Field Operations Supervisor
 City of Cooper City, Florida
 MStanton@coopercityfl.org
 Phone: 954-434-4300 #115
 Utilities: 954-434-5519

RE: City of Cooper City – Sewer Rehabilitation – 2024 EX Lining – PO 003 – LS Basin 1

General

Thank you for contacting Miller Pipeline Corporation for your pipeline rehabilitation needs. We are pleased to submit our proposal for providing materials and services for the above referenced project. Pricing below is based on using our current contract # CIP/220762 with the City of Ocala as a host pricing contract.

Scope of Service

To meet the requirements of this project, we propose to furnish the following items:

1. Mobilize and demobilize our lining crew, equipment, and materials to the specified project location.
2. Cleaning and CCTV of existing pipe segments to assess and facilitate lining.
3. Special cleaning and removal of any protruding taps of existing pipe before liner installation.
4. Furnish and Install CIPP liner.
5. Reinstate active lateral connections.
6. Post TV of all lined sewer mains.
7. Bypass pumping up to 4" trash pump.
8. Provide traffic control using normal cones, signs and flaggers, as needed.

Item	Description	Qty	UM	Bid \$/Unit	Bid \$ Line Total
F1	Install Fold and Form liner, 8-inch diameter gravity mains (all depth)	14,068	LF	\$35.00	\$492,380.00
F5	Sewer main cleaning and TV inspection (8-inch through 12-inch)	14,068	LF	\$2.35	\$33,059.80
F8	Reinstate Laterals and Grout annular space	270	EA	\$495.00	\$133,650.00
F9	Mechanical Root or Grease Removal (12-inch or smaller)	550	LF	\$4.15	\$2,282.50
F11	Mechanical Tuberculation Removal (12-inch or smaller)	250	LF	\$22.50	\$5,625.00
F13	Protruding service connection removed by internal means	20	EA	\$331.25	\$6,625.00
G-05	Maintenance of Traffic	38	DAYS	\$685.00	\$26,030.00
	SUBTOTAL LINING				\$699,652.30



AN ARTERA COMPANY

Responsibilities of Others

We will expect that the following will be furnished to Miller Pipeline Corporation at no cost to us:

1. Free and legal access to the project site.
2. All approvals and permits as applicable.
3. Any required Point Repairs of the pipe.

General Conditions

1. The project does not contain hazardous materials.
2. Payment should be made within thirty (30) days after date of invoice from Miller Pipeline Corporation.
3. The submitted pricing does not include any taxes. All applicable taxes should be added to the pricing unless we are provided with tax-exempt statement from the buyer.

Closing

We thank you for the opportunity to offer this firm proposal and look forward to providing this service. If you have any need for further assistance, please call me at (317) 617-0547.

Sincerely

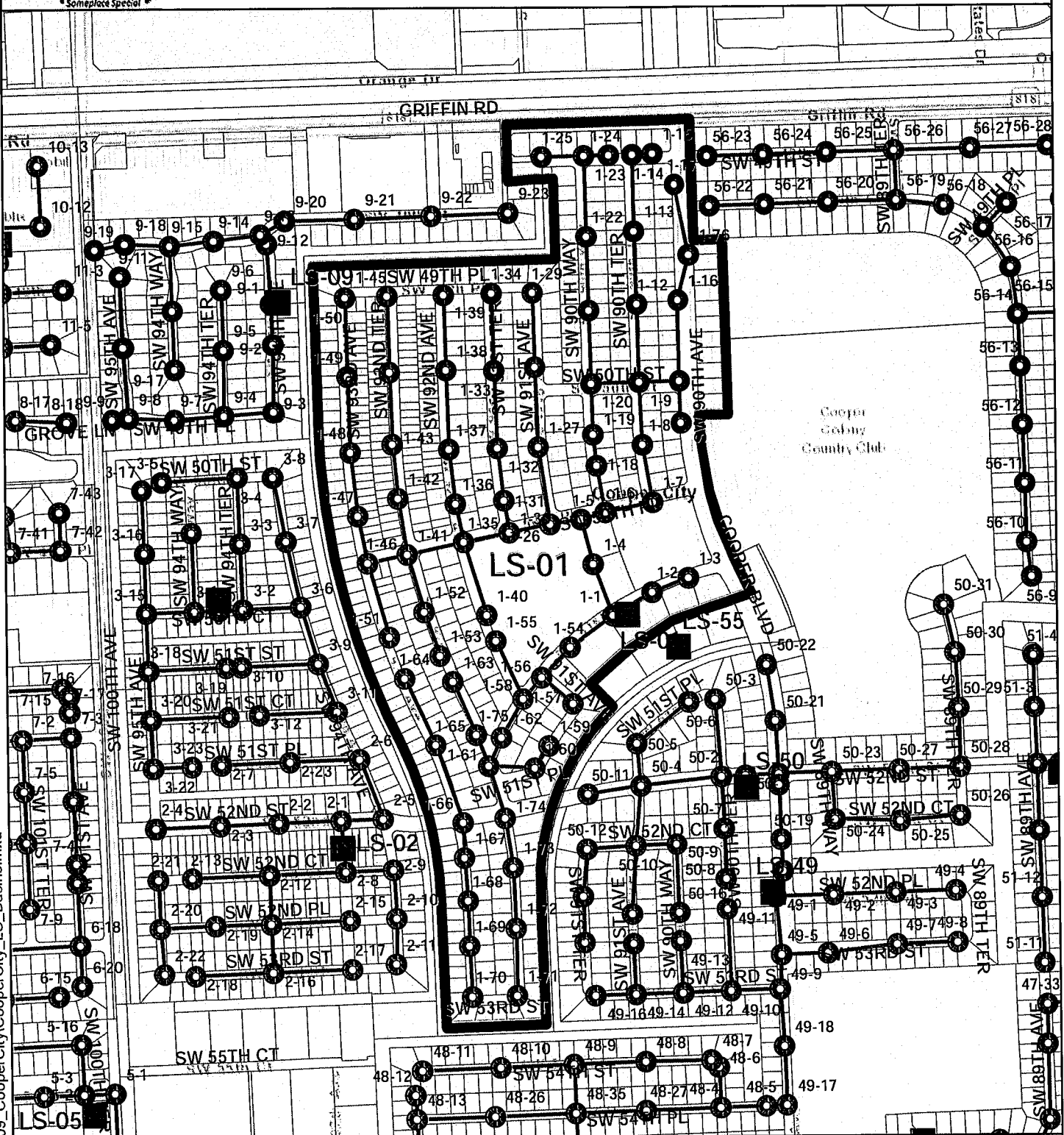
A handwritten signature in blue ink, appearing to read 'J. Newman', written over a horizontal line.

Jeff Newman, Regional Manager, Miller Pipeline

Facility Identifier	MH#	MH#	Footage	Size	Lift Station Basin
GM4000	1-100	1-101	225ft	8in	1
GM4001	1-101	1-102	225ft	8in	1
GM4002	1-103	1-102	271ft	8in	1
GM4003	1-102	1-16	72ft	8in	1
GM4004	1-17	1-76	250ft	8in	1
GM4005	1-76	1-16	400ft	8in	1
GM2137	1-16	1-10	420ft	8in	1
GM2083	1-11	1-10	200ft	8in	1
GM1190	1-15	1-14	105ft	6in	1
GM2109	1-14	1-13	400ft	8in	1
GM2138	1-13	1-12	380ft	8in	1
GM1191	1-12	1-9	400ft	8in	1
GM2141	1-10	1-9	215ft	8in	1
GM1188	1-24	1-23	271ft	8in	1
GM4006	1-25	1-23	120ft	8in	1
GM1189	1-23	1-22	420ft	8in	1
GM2140	1-22	1-21	380ft	8in	1
GM2139	1-21	1-20	380ft	8in	1
Gm1193	1-9	1-20	250ft	8in	1
GM1196	1-7	1-8	300ft	8in	1
GM2142	1-8	1-9	320ft	8in	1
GM2087	1-7	1-6	250ft	8in	1
GM1195	1-6	1-18	243ft	8in	1
GM1194	1-18	1-19	160ft	8in	1
GM2084	1-19	1-20	263ft	8in	1
GM2085	1-6	1-5	131ft	8in	1
GM2111	1-29	1-28	381ft	8in	1
GM1197	1-28	1-27	420ft	8in	1
GM1198	1-26	1-26	400FT	8in	1
GM2110	1-34	1-33	400ft	8in	1
GM1199	1-33	1-32	400ft	8in	1
GM2090	1-32	1-31	270ft	8in	1
GM1200	1-31	1-30	167ft	8in	1
GM2091	1-38	1-73	406ft	8in	1
GM1202	1-37	1-36	281ft	8in	1
GM1203	1-36	1-35	202ft	8in	1
GM1204	1-45	1-44	390ft	8in	1
GM2164	1-44	1-43	375ft	8in	1
GM1205	1-43	1-42	280ft	8in	1
GM1206	1-42	1-41	294ft	8in	1
GM1207	1-50	1-49	405ft	8in	1
GM2112	1-49	1-48	390ft	8in	1
GM1208	1-48	1-47	330ft	8in	1
GM1209	1-47	1-46	250ft	8in	1
GM2092	1-46	1-41	213ft	8in	1
GM1210	1-41	1-35	300ft	8in	1
GM2088	1-35	1-30	243ft	8in	1
GM2089	1-30	1-26	220ft	8in	1
			14,068ft		48
				0	240



City of Cooper City Lift Station Basins - LS-01



Document Path: S:\1009_CooperCity\CooperCity_LS_Basins.mxd

- Legend**
- Sewer Manholes
 - Sewer Gravity Mains

Date: 4/4/2023
 when printed on 8 1/2" x 11"
 1 inch = 727 feet