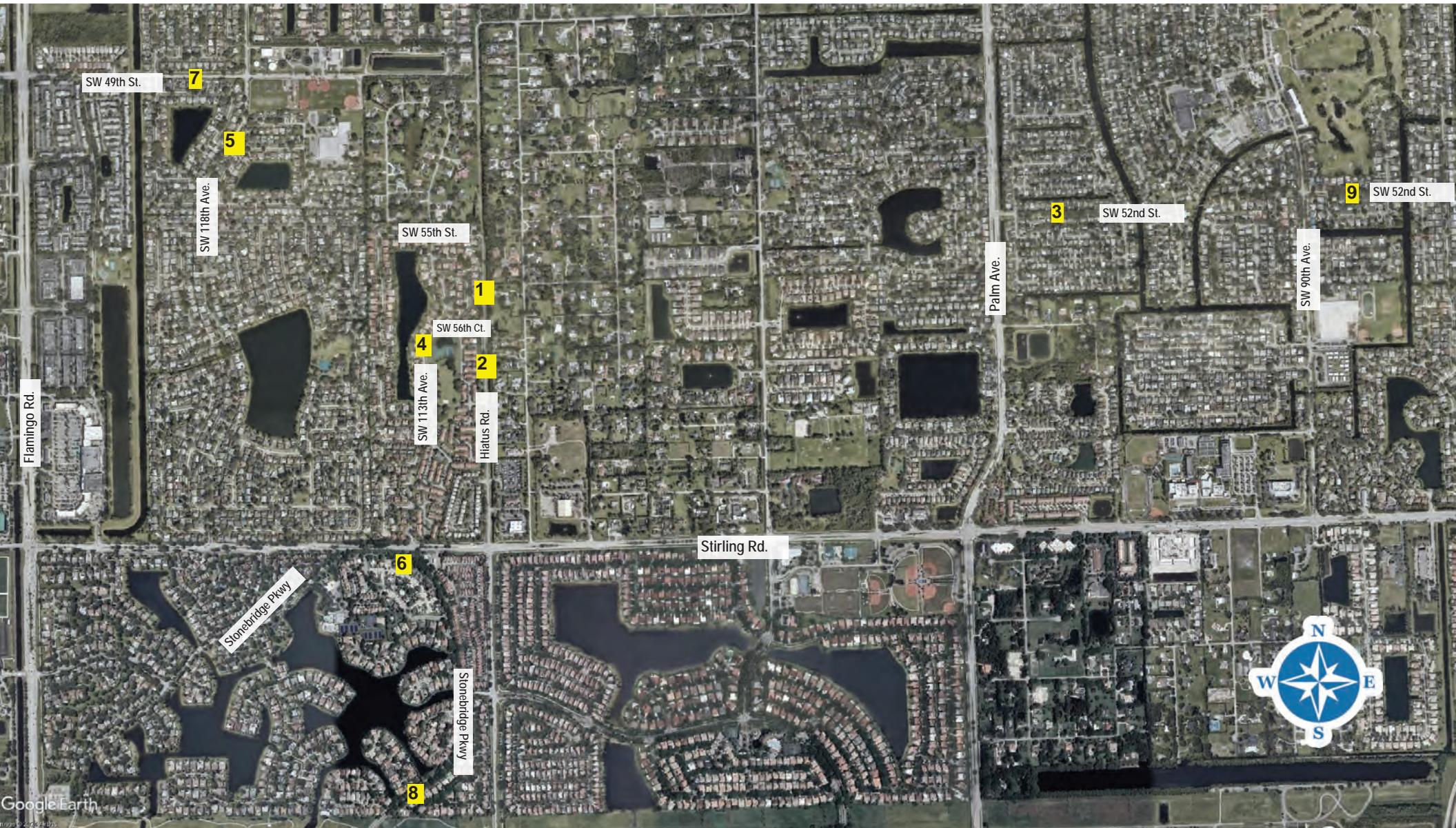


**COOPER CITY TRAFFIC CALMING (Pilot Project)**

	<b>CORRIDOR SEGMENT</b>	<b>RECOMMENDED IMPROVEMENTS</b>	<b>PRELIMINARY LOCATIONS</b>
1, 2	Hiatus Road- Stirling Road to SW 55th Street	Speed Cushion	Between SW 56th Ct. & SW 55th St.
		Speed Cushion	Between SW 57th Cir. & SW 59th St.
3	SW 52nd Street- SW 94th Avenue to SW 95th Avenue*	Speed Cushion	At approximately 9450 SW 52nd St.
4	SW 113th Avenue- Stirling Road to SW 55th Street	Speed Cushion	Between SW 56th Ct. & SW 58th St.
5	SW 118th Avenue- SW 49th Street to SW 52nd Street	Speed Cushion	Between SW 50th St. & SW 51st Ct.
6	Stonebridge Parkway- W Lake Blvd. to NE Lake Blvd.*	Speed Cushion	Between Forest Hill Dr. & Access Rd.
7	SW 49th Street- Flamingo Road to 118th Avenue	Speed Cushion	Between SW 120th Ave. & SW 118th Ave.
8	Stonebridge Parkway- NE Lake Blvd. to SE Lake Blvd.	Speed Cushion	Between Anchor Wy. & Dockside Dr.
9	SW 52nd Street- SW 90th Ave to SW 88th Terrace	Speed Cushion	Between SW 89th Ter. & SW 89th Wy.



SW 49th St.

7

5

SW 118th Ave.

SW 55th St.

1

SW 56th Ct.

4

2

SW 113th Ave.

Hiatus Rd.

Flamingo Rd.

Stirling Rd.

3

SW 52nd St.

9

SW 52nd St.

Palm Ave.

SW 90th Ave.

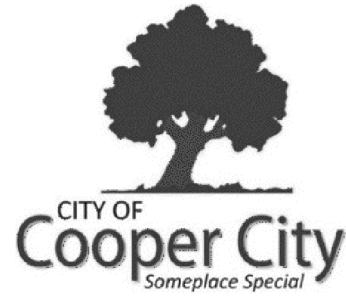
Stonebridge Pkwy

6

Stonebridge Pkwy

8

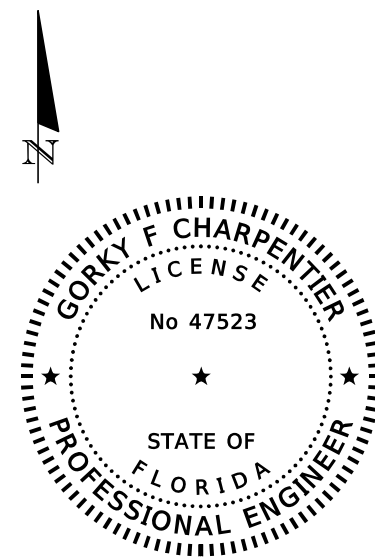
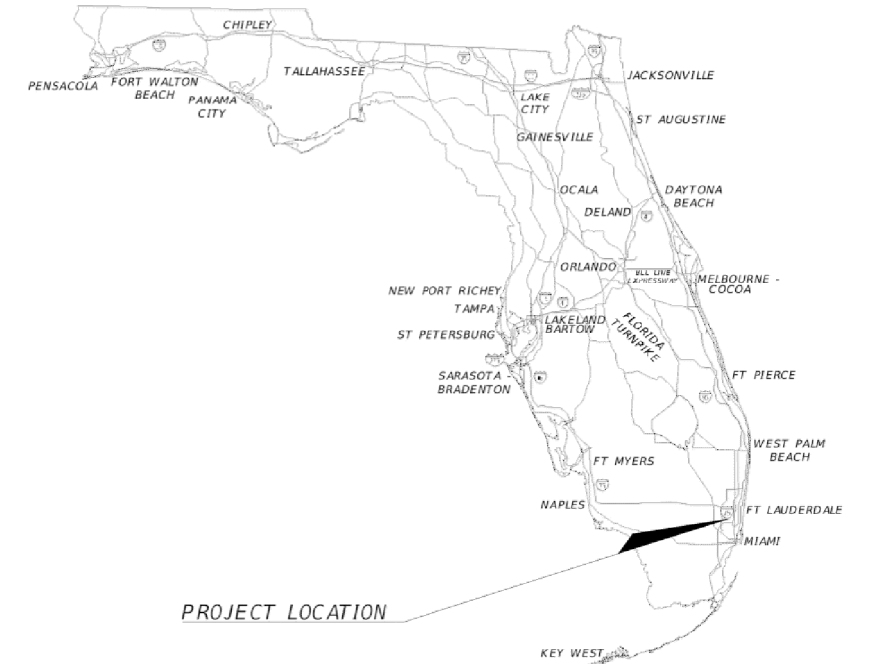




**CITY OF COOPER CITY  
TRAFFIC CALMING PILOT PROGRAM  
(9 LOCATIONS)**

SHEET NO.	TITLE
SC-0	COVER SHEET
SC-0A	BCTED GENERAL NOTES
SC-1	HIATUS ROAD
SC-2	HIATUS ROAD
SC-3	SW 52ND STREET
SC-4	SW 113TH AVE
SC-5	SW 118TH AVE
SC-6	STONEBRIDGE PARKWAY
SC-7	SW 49TH STREET
SC-8	STONEBRIDGE PARKWAY
SC-9	SW 52ND STREET
SC-10	SPEED CUSHION DETAILS AND SPECIFICATIONS

BROWARD COUNTY DETAILS & SPECIFICATIONS	
SHEET NO.	TITLE
SC-11	SPEED HUMP DETAILS AND SPECIFICATIONS
SC-12	GROUND SIGN ASSEMBLY DETAILS
SC-13	PAVEMENT MARKINGS AND SIGNS DETAILS



THIS ITEM HAS BEEN DIGITALLY  
SIGNED AND SEALED BY

ON THE DATE ADJACENT TO THE SEAL

PRINTED COPIES OF THIS DOCUMENT  
ARE NOT CONSIDERED SIGNED AND  
SEALED AND THE SIGNATURE MUST  
BE VERIFIED ON ANY ELECTRONIC COPIES.

NOTES:  
1. MAINTENANCE OF TRAFFIC AS PER FDOT INDEX No. 600  
2. THESE PLANS ARE VALID WITH THE APPROVED PERMITS  
BY THE REGULATORY AGENCIES HAVING JURISDICTION OVER  
THE PROJECT LOCATION. ANY USE WITHOUT THE REQUIRED  
PERMITS IS THE RESPONSIBILITY OF THE USER.  
3. THESE PLANS DO NOT DEPICT ANY UNDERGROUND OR  
ABOVE GROUND EXISTING UTILITIES. CONTRACTOR  
SHALL EXERCISE CAUTION WHEN WORKING AROUND  
EXISTING UTILITIES TO AVOID IMPACTING EXISTING  
UTILITIES.

BCTED REF. NO 240820060

REVISIONS				THE CORRADINO GROUP, INC GORKY CHARPENTIER P.E. LICENSE NUMBER 47523 4055 N.W. 97TH AVENUE, DORAL, FL, 33178 PH:(305)594-0735 FAX:(305)594-0755	CITY OF COOPER CITY	TRAFFIC CALMING PILOT PROGRAM	SHEET NO.
DATE	DESCRIPTION	DATE	DESCRIPTION				SC-0

**GENERAL NOTES:**

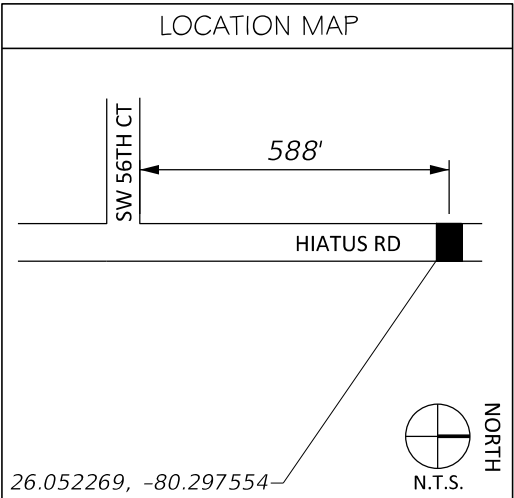
1. BROWARD COUNTY TRAFFIC ENGINEERING DIVISION'S REVIEW DOES NOT INCLUDE A REVIEW AND ACCEPTANCE OF THE PROJECT'S DESIGN OR OPERATION. THESE ITEMS ARE TO BE REVIEWED AND APPROVED BY THE CITY ENGINEER.
2. BROWARD COUNTY TRAFFIC ENGINEERING DIVISION DOES NOT APPROVE OR INSPECT AND ACCEPT THE FOLLOWING ITEMS FOR MAINTENANCE: PAVEMENT MARKINGS ON OR ADJACENT TO PAVER BRICKS, PAINTED ASPHALT, STAMPED ASPHALT OR PAVEMENT MARKINGS MADE OF PAVER BRICKS, RAISED INTERSECTIONS AND RELATED MARKINGS AND SIGNING, UN-WARRANTED MID-BLOCK CROSSWALKS AND RELATED MARKINGS AND SIGNING, UN-WARRANTED CROSSWALKS AND RELATED MARKINGS AND SIGNING, PAINTED/DECORATIVE CROSSWALKS, RAISED CROSSWALKS AND RELATED MARKINGS AND SIGNING, ADVANCED WARNING PAVEMENT MARKINGS FOR SPEED TABLES, BLINKER SIGNS, RECTANGULAR RAPID FLASHER BEACONS AND RELATED MARKINGS AND SIGNING, ON-STREET PARKING AND RELATED MARKINGS AND SIGNING, IN-ROAD LIGHTING AND RELATED MARKINGS AND SIGNING, GREEN BIKE LANES, FLEXIBLE DELINEATORS, DECORATIVE SIGNS AND DECORATIVE SIGN POSTS, PLANTERS, ON-SITE PAVEMENT MARKINGS AND SIGNING, OFF-SITE PAVEMENT MARKINGS AND SIGNING IN RIGHT-OF-WAY THAT IS NOT DEDICATED FOR PUBLIC USE, SIDEWALK WORK OR ASPHALT WORK.
3. THE CITY ENGINEER IS RESPONSIBLE FOR THE REVIEW AND APPROVAL OF THE DESIGN AND OPERATION OF THE PROJECT, AND FOR THE INSPECTION AND ACCEPTANCE OF THE FOLLOWING ITEMS THAT WILL BE MAINTAINED BY THE CITY: PAVEMENT MARKINGS ON OR ADJACENT TO PAVER BRICKS, PAINTED ASPHALT, STAMPED ASPHALT OR PAVEMENT MARKINGS MADE OF PAVER BRICKS, PAVEMENT MARKINGS ON OR ADJACENT TO PAINTED ASPHALT, RAISED INTERSECTIONS AND RELATED MARKINGS AND SIGNING, UN-WARRANTED MID-BLOCK CROSSWALKS AND RELATED MARKINGS AND SIGNING, UN-WARRANTED CROSSWALKS AND RELATED MARKINGS AND SIGNING, PAINTED/ DECORATIVE CROSSWALKS, RAISED CROSSWALKS AND RELATED MARKINGS AND SIGNING, ADVANCED WARNING PAVEMENT MARKINGS FOR SPEED TABLES, BLINKER SIGNS, RECTANGULAR RAPID FLASHER BEACONS AND RELATED MARKINGS AND SIGNING, ON-STREET PARKING AND RELATED MARKINGS AND SIGNING, IN-ROAD LIGHTING AND RELATED MARKINGS AND SIGNING, GREEN BIKE LANES, FLEXIBLE DELINEATORS, DECORATIVE SIGNS AND DECORATIVE SIGN POSTS, PLANTERS, ON-SITE PAVEMENT MARKINGS AND SIGNING, OFF-SITE PAVEMENT MARKINGS AND SIGNING IN RIGHT-OF-WAY THAT IS NOT DEDICATED FOR PUBLIC USE, SIDEWALK WORK OR ASPHALT WORK.
4. ALL TRAFFIC CONTROL DEVICES MAINTAINED BY BROWARD COUNTY, THAT ARE REMOVED OR DAMAGED BY CONSTRUCTION, SHALL BE REPLACED BY CONTRACTOR USING CURRENT BROWARD COUNTY TRAFFIC ENGINEERING DIVISION STANDARDS.
5. BCTED DOES NOT MAINTAIN PAVEMENT MARKINGS ON SPEED CUSHIONS.
6. IN ORDER TO MAINTAIN CURRENT/EXISTING DRAINAGE PATTERNS, THE CONTRACTOR SHALL NOT BLOCK EXISTING ROADWAY GUTTERS OR RAIN OF FLOW WITHIN THE PROPOSED SPEED CUSHIONS.
7. GENERAL CONTRACTOR IS RESPONSIBLE TO PROVIDE AS-BUILT PLANS TO THE CITY OF COOPER CITY AFTER COMPLETION OF WORK.
8. ALL TRAFFIC CONTROL SIGNS MUST MEET THE CRITERIA OUTLINED IN SECTION 2A.08 OF THE 2009 MANUAL OF UNIFORM TRAFFIC CONTROL DEVICES (MUTCD), AND MEET THE SPECIFICATIONS OUTLINED IN SECTION 700 AND 994 OF THE 2021 STANDARD SPECIFICATIONS OF THE FLORIDA DEPARTMENT OF TRANSPORTATION (FDOT).
9. ALL TRAFFIC CONTROL SIGNS WITHIN THE ROW SHALL CONSIST OF SHEETING MATERIALS CERTIFIED TO MEET THE REFLECTIVE SHEETING REQUIREMENTS OUTLINED IN THE 2019 VERSION OF ASTM D4956 FOR TYPE XI (FDOT TYPE XI) RETROREFLECTIVE SHEETING MATERIALS MADE WITH PRISMS; EXCEPT FOR SCHOOL ZONE , PEDESTRIANS, AND SHARED USE PATHS SIGNS WHICH SHALL BE COMPRISED OF REFLECTIVE FLUORESCENT YELLOW-GREEN SHEETING CERTIFIED TO MEET ASSTM D4956 TYPE IV (FDOT TYPE IV) REFLECTIVE SHEETING REQUIREMENTS.
10. CONSIST OF RETROREFLECTIVE SHEETING MATERIALS THAT HAVE A VALID FDOT APPROVED PRODUCT LIST CERTIFICATION FOR SPECIFICATION 700 HIGHWAY SIGNING FOR FDOT SHEETING TYPE XI (OR TYPE IV FOR SCHOOL ZONE, PEDESTRIAN, AND SHARED USE PATH SIGNS)

BCTED REF. NO 240820060

REVISIONS				THE CORRADINO GROUP, INC GORKY CHARPENTIER P.E. LICENSE NUMBER 47523 4055 N.W. 97TH AVENUE, DORAL, FL, 33178 PH:(305)594-0735 FAX:(305)594-0755	CITY OF COOPER CITY	TRAFFIC CALMING PILOT PROGRAM	SHEET NO.
DATE	DESCRIPTION	DATE	DESCRIPTION				SC-0A



PROPOSED SPEED CUSHION PLAN



FACING NORTH



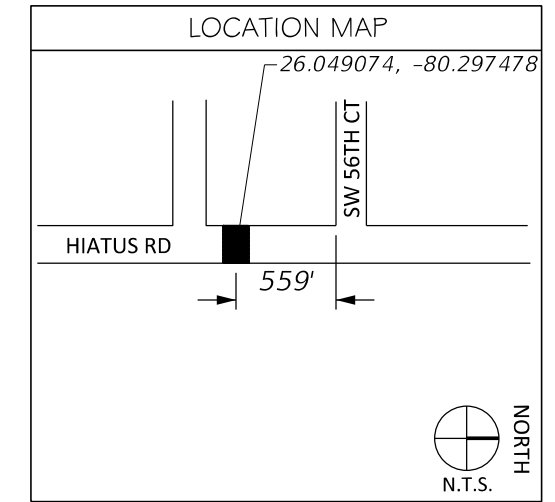
FACING SOUTH

- NOTES:**
1. SEE PLAN SHEET SC-11 FOR THE LOCATION OF SIGNS (A) AND (B).
  2. ALL TRAFFIC CONTROL DEVICES MAINTAINED BY BROWARD COUNTY, THAT ARE REMOVED OR DAMAGED BY CONSTRUCTION, SHALL BE REPLACED BY CONTRACTOR USING CURRENT BROWARD COUNTY TRAFFIC ENGINEERING DIVISION STANDARDS.

BCTED REF. NO 240820060

REVISIONS				THE CORRADINO GROUP, INC GORKY CHARPENTIER P.E. LICENSE NUMBER 47523 4055 N.W. 97TH AVENUE, DORAL, FL, 33178 PH:(305)594-0735 FAX:(305)594-0755	CITY OF COOPER CITY		TRAFFIC CALMING PILOT PROGRAM	SHEET NO.  SC-1
DATE	DESCRIPTION	DATE	DESCRIPTION		ROAD HIATUS RD	BROWARD		

PROPOSED SPEED CUSHION PLAN



FACING NORTH



FACING SOUTH

- NOTES:**
1. SEE PLAN SHEET SC-11 FOR THE LOCATION OF SIGNS (A) AND (B).
  2. ALL TRAFFIC CONTROL DEVICES MAINTAINED BY BROWARD COUNTY, THAT ARE REMOVED OR DAMAGED BY CONSTRUCTION, SHALL BE REPLACED BY CONTRACTOR USING CURRENT BROWARD COUNTY TRAFFIC ENGINEERING DIVISION STANDARDS.

BCTED REF. NO 240820060

REVISIONS			
DATE	DESCRIPTION	DATE	DESCRIPTION

**THE CORRADINO GROUP, INC**  
 GORKY CHARPENTIER  
 P.E. LICENSE NUMBER 47523  
 4055 N.W. 97TH AVENUE, DORAL, FL, 33178  
 PH:(305)594-0735 FAX:(305)594-0755

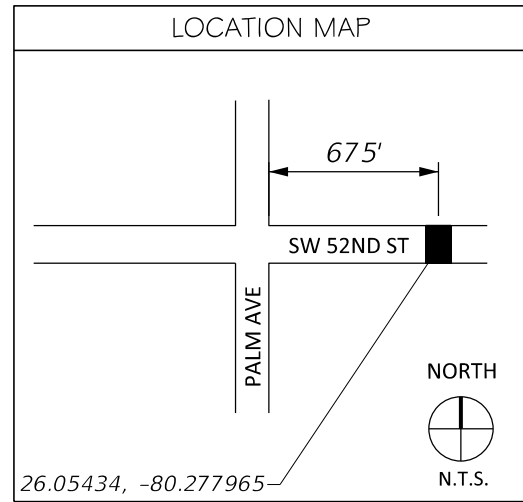
**CITY OF COOPER CITY**

ROAD	COUNTY
HIATUS RD	BROWARD

**TRAFFIC CALMING  
 PILOT PROGRAM**

SHEET NO.  
 SC-2

PROPOSED SPEED CUSHION PLAN



FACING WEST



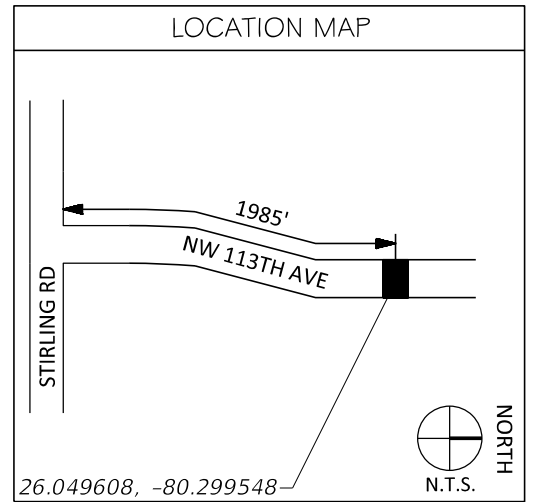
FACING EAST

- NOTES:**
- SEE PLAN SHEET SC-11 FOR THE LOCATION OF SIGNS (A) AND (B). THE LOCATION OF THE SPEED CUSHIONS IS APPROXIMATE AND SHOULD NOT BE PLACED IN FRONT OF DRIVEWAYS
  - ALL TRAFFIC CONTROL DEVICES MAINTAINED BY BROWARD COUNTY, THAT ARE REMOVED OR DAMAGED BY CONSTRUCTION, SHALL BE REPLACED BY CONTRACTOR USING CURRENT BROWARD COUNTY TRAFFIC ENGINEERING DIVISION STANDARDS.

BCTED REF. NO 240820060

REVISIONS		THE CORRADINO GROUP, INC GORKY CHARPENTIER P.E. LICENSE NUMBER 47523 4055 N.W. 97TH AVENUE, DORAL, FL, 33178 PH:(305)594-0735 FAX:(305)594-0755	CITY OF COOPER CITY		TRAFFIC CALMING PILOT PROGRAM	SHEET NO.  SC-3
DATE	DESCRIPTION		ROAD	COUNTY		
			SW 52ND ST	BROWARD		

PROPOSED SPEED CUSHION PLAN



FACING NORTH



FACING SOUTH

- NOTES:**
- SEE PLAN SHEET SC-11 FOR THE LOCATION OF SIGNS (A) AND (B). THE LOCATION OF THE SPEED CUSHIONS IS APPROXIMATE AND SHOULD NOT BE PLACED IN FRONT OF DRIVEWAYS
  - ALL TRAFFIC CONTROL DEVICES MAINTAINED BY BROWARD COUNTY, THAT ARE REMOVED OR DAMAGED BY CONSTRUCTION, SHALL BE REPLACED BY CONTRACTOR USING CURRENT BROWARD COUNTY TRAFFIC ENGINEERING DIVISION STANDARDS.

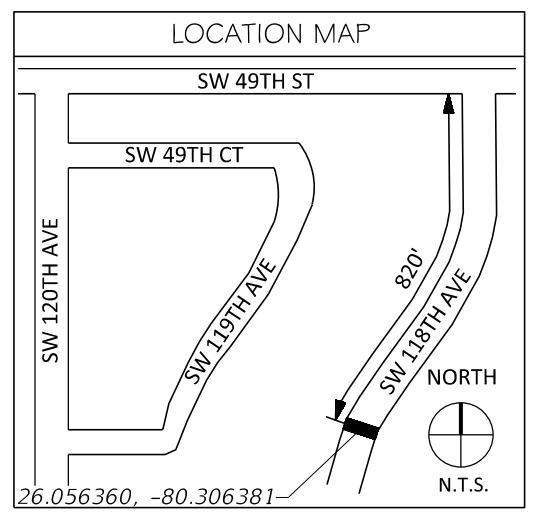
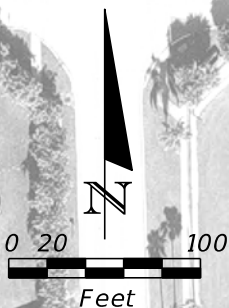
BCTED REF. NO 240820060

REVISIONS				THE CORRADINO GROUP, INC		CITY OF COOPER CITY		TRAFFIC CALMING PILOT PROGRAM		SHEET NO.
DATE	DESCRIPTION	DATE	DESCRIPTION	GORKY CHARPENTIER P.E. LICENSE NUMBER 47523 4055 N.W. 97TH AVENUE, DORAL, FL, 33178 PH:(305)594-0735 FAX:(305)594-0755		ROAD	COUNTY			SC-4
						SW 113TH AVE	BROWARD			





PROPOSED SPEED CUSHION PLAN



FACING NORTH



FACING SOUTH

BCTED REF. NO 240820060

- NOTES:**
1. SEE PLAN SHEET SC-11 FOR THE LOCATION OF SIGNS (A) AND (B).
  2. ALL TRAFFIC CONTROL DEVICES MAINTAINED BY BROWARD COUNTY, THAT ARE REMOVED OR DAMAGED BY CONSTRUCTION, SHALL BE REPLACED BY CONTRACTOR USING CURRENT BROWARD COUNTY TRAFFIC ENGINEERING DIVISION STANDARDS.

REVISIONS	
DATE	DESCRIPTION

**THE CORRADINO GROUP, INC**  
 GORKY CHARPENTIER  
 P.E. LICENSE NUMBER 47523  
 4055 N.W. 97TH AVENUE, DORAL, FL, 33178  
 PH:(305)594-0735 FAX:(305)594-0755

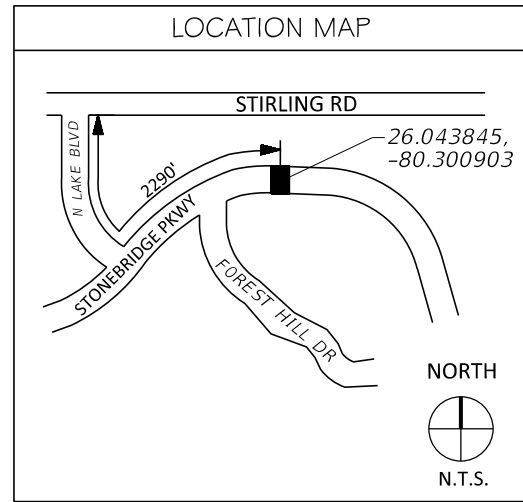
<b>CITY OF COOPER CITY</b>	
ROAD	COUNTY
SW 118TH AVE	BROWARD

**TRAFFIC CALMING  
 PILOT PROGRAM**

SHEET NO.  
 SC-5



PROPOSED SPEED CUSHION PLAN



FACING EAST



FACING WEST

BCTED REF. NO 240820060

- NOTES:**
1. SEE PLAN SHEET SC-11 FOR THE LOCATION OF SIGNS (A) AND (B).
  2. ALL TRAFFIC CONTROL DEVICES MAINTAINED BY BROWARD COUNTY, THAT ARE REMOVED OR DAMAGED BY CONSTRUCTION, SHALL BE REPLACED BY CONTRACTOR USING CURRENT BROWARD COUNTY TRAFFIC ENGINEERING DIVISION STANDARDS.

REVISIONS			
DATE	DESCRIPTION	DATE	DESCRIPTION

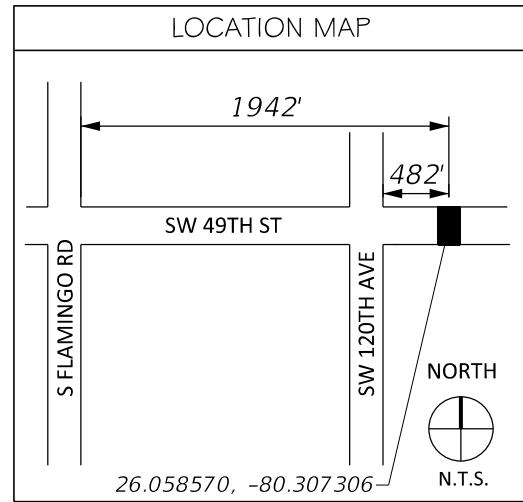
**THE CORRADINO GROUP, INC**  
 GORKY CHARPENTIER  
 P.E. LICENSE NUMBER 47523  
 4055 N.W. 97TH AVENUE, DORAL, FL, 33178  
 PH:(305)594-0735 FAX:(305)594-0755

<b>CITY OF COOPER CITY</b>	
ROAD STONEBRIDGE PARKWAY	COUNTY BROWARD

**TRAFFIC CALMING  
PILOT PROGRAM**

SHEET NO.  
SC-6

PROPOSED SPEED CUSHION PLAN



FACING EAST



FACING WEST

- NOTES:**
- SEE PLAN SHEET SC-II FOR THE LOCATION OF SIGNS (A) AND (B).
  - ALL TRAFFIC CONTROL DEVICES MAINTAINED BY BROWARD COUNTY, THAT ARE REMOVED OR DAMAGED BY CONSTRUCTION, SHALL BE REPLACED BY CONTRACTOR USING CURRENT BROWARD COUNTY TRAFFIC ENGINEERING DIVISION STANDARDS.

BCTED REF. NO 240820060

REVISIONS	
DATE	DESCRIPTION

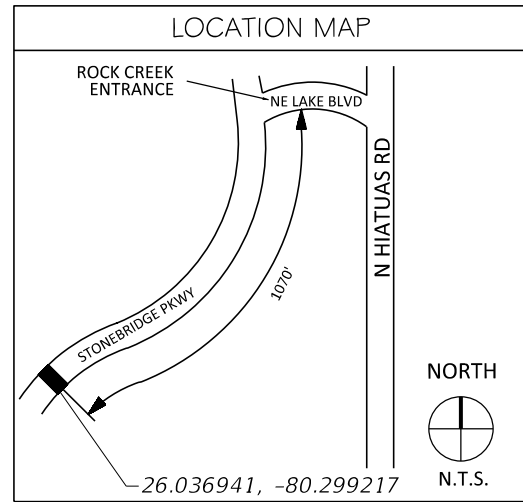
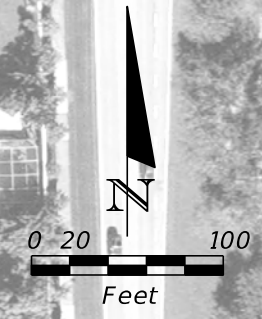
**THE CORRADINO GROUP, INC**  
 GORKY CHARPENTIER  
 P.E. LICENSE NUMBER 47523  
 4055 N.W. 97TH AVENUE, DORAL, FL, 33178  
 PH:(305)594-0735 FAX:(305)594-0755

<b>CITY OF COOPER CITY</b>	
ROAD	COUNTY
SW 49TH ST	BROWARD

**TRAFFIC CALMING  
 PILOT PROGRAM**

SHEET  
 NO.  
**SC-7**

PROPOSED SPEED CUSHION PLAN



EXISTING STOP SIGN

14'x6'x3" SPEED CUSHIONS CENTERED ON ROAD

- NOTES:**
- SEE PLAN SHEET SC-II FOR THE LOCATION OF SIGNS (A) AND (B).
  - ALL TRAFFIC CONTROL DEVICES MAINTAINED BY BROWARD COUNTY, THAT ARE REMOVED OR DAMAGED BY CONSTRUCTION, SHALL BE REPLACED BY CONTRACTOR USING CURRENT BROWARD COUNTY TRAFFIC ENGINEERING DIVISION STANDARDS.



NORTHBOUND LANE LOOKING NORTH



NORTHBOUND LANE LOOKING SOUTH



SOUTHBOUND LANE LOOKING NORTH



SOUTHBOUND LANE LOOKING SOUTH

BCTED REF. NO 240820060

REVISIONS			
DATE	DESCRIPTION	DATE	DESCRIPTION

**THE CORRADINO GROUP, INC**  
 GORKY CHARPENTIER  
 P.E. LICENSE NUMBER 47523  
 4055 N.W. 97TH AVENUE, DORAL, FL, 33178  
 PH:(305)594-0735 FAX:(305)594-0755

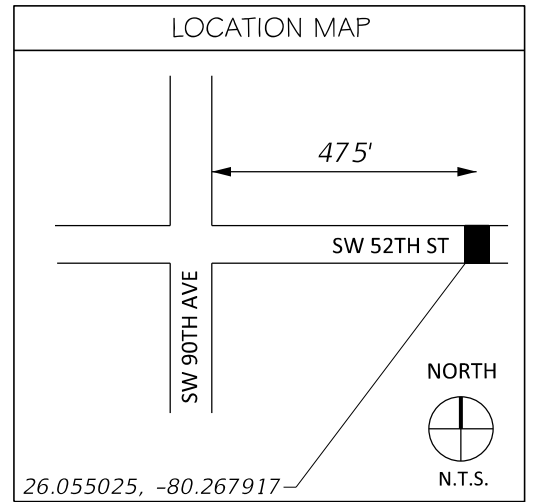
**CITY OF COOPER CITY**

ROAD	COUNTY
STONEBRIDGE PARKWAY	BROWARD

**TRAFFIC CALMING PILOT PROGRAM**

SHEET NO.  
SC-8

PROPOSED SPEED CUSHION PLAN



FACING EAST



FACING WEST

BCTED REF. NO 240820060

- NOTES:**
1. SEE PLAN SHEET SC-11 FOR THE LOCATION OF SIGNS (A) AND (B).
  2. ALL TRAFFIC CONTROL DEVICES MAINTAINED BY BROWARD COUNTY, THAT ARE REMOVED OR DAMAGED BY CONSTRUCTION, SHALL BE REPLACED BY CONTRACTOR USING CURRENT BROWARD COUNTY TRAFFIC ENGINEERING DIVISION STANDARDS.

REVISIONS		THE CORRADINO GROUP, INC		CITY OF COOPER CITY		TRAFFIC CALMING PILOT PROGRAM	SHEET NO.
DATE	DESCRIPTION	DATE	DESCRIPTION	ROAD	COUNTY		
				STONEBRIDGE	BROWARD		SC-9

GORKY CHARPENTIER  
 P.E. LICENSE NUMBER 47523  
 4055 N.W. 97TH AVENUE, DORAL, FL, 33178  
 PH:(305)594-0735 FAX:(305)594-0755

## SPEED CUSHION SPECIFICATIONS

SPEED CUSHIONS MUST BE CONSTRUCTED USING PATENTED TONGUE AND GROOVE 18"X42" INTERLOCKING RUBBER MODULES. EACH MODULE SHOULD BE BOLTED TO THE ROAD USING SIX FUSION COATED RUST RESISTANT LAG BOLTS THROUGH A PLASTIC SHIELD INSTALLED IN THE PAVEMENT. SPEED CUSHIONS SHOULD MEET MUTCD STANDARDS.

DIMENSIONS OF THE TONGUE AND GROOVE MODULES:  
 WIDTH: 18" (+/-1/16")  
 LENGTH: 42" (+/-1/8")  
 THICKNESS: 3" (+/-1/8")

DIMENSIONS OF THE CUSHIONS ARE CHANGEABLE BY  
 WIDTH: 18" INCREMENTS  
 LENGTH: 42" INCREMENTS

STANDARD DIMENSIONS OF SPEED CUSHIONS  
 7'X6'X3" - 8 MODULES  
 10.5'X6'X3" (FLAT SURFACE 72"X42") - 12 MODULES  
 14'X6'X3" (FLAT SURFACE 72"X84") - 16 MODULES  
 21'X6'X3" (FLAT SURFACE 72"X126") - 20 MODULES  
 ENTRANCE AND EXIT GRADIENT: 1:15 (7%) LIP: 0.25"  
 SIDE GRADIENT: 1:3 (35%) LIP: 0.25"

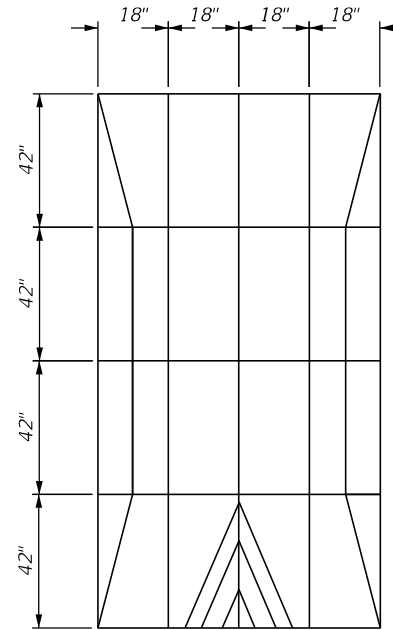
PHYSICAL PROPERTIES:  
 MATERIAL: COMPRESSION MOLDED 100% RECYCLED SYNTHETIC AND NATURAL RUBBER COMPOSITE  
 TENSILE STRENGTH: MINIMUM 500 PSI  
 SHORE HARDNESS: MINIMUM 70A  
 SPECIFIC GRAVITY: 1.1  
 DEFORMATION RATE: NONE, 100% RECOVERY  
 SKID RESISTANCE: 89 (DRY)

MARKINGS: ALL MARKINGS ARE EMBEDDED INTO THE RUBBER DURING THE MANUFACTURING PROCESS AND HAVE REFLECTIVE QUALITIES. THE MUTCD PATTERN MARKINGS (AS SHOWN IN DRAWINGS) ARE AVAILABLE IN WHITE ONLY.

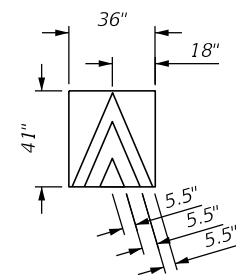
BCTED WILL NOT MAINTAIN MARKINGS ON SPEED CUSHIONS.

## SPEED CUSHION DETAILS N.T.S.

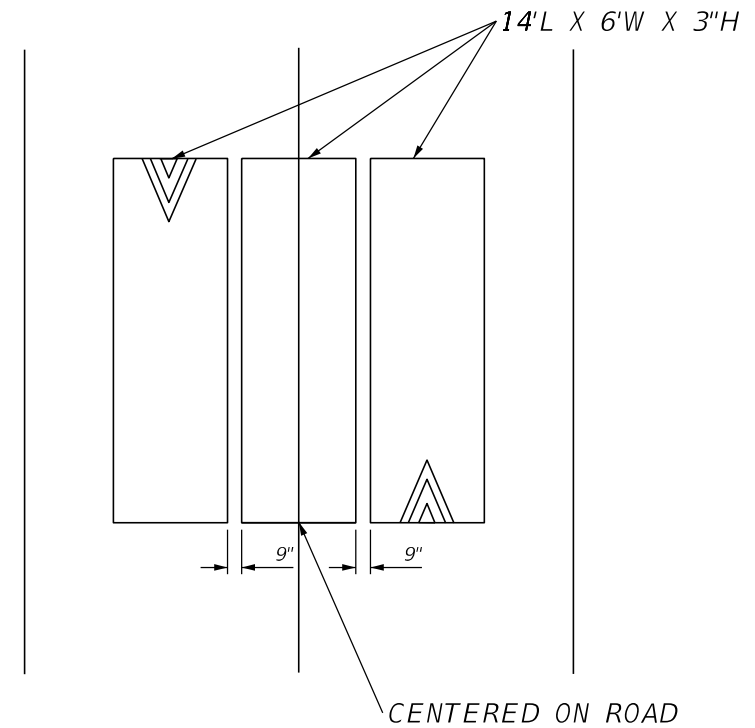
### 14'L X 6'W X 3"H SPEED CUSHIONS N.T.S.



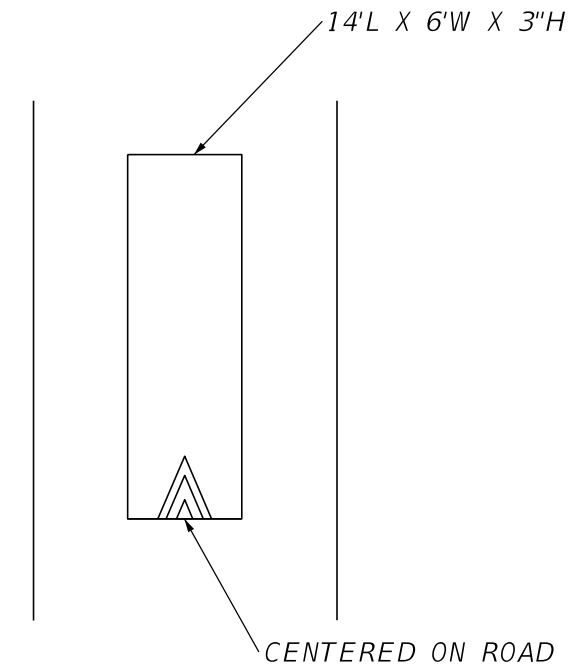
### PATTERN MARKINGS N.T.S.



### 2 LANE ROAD



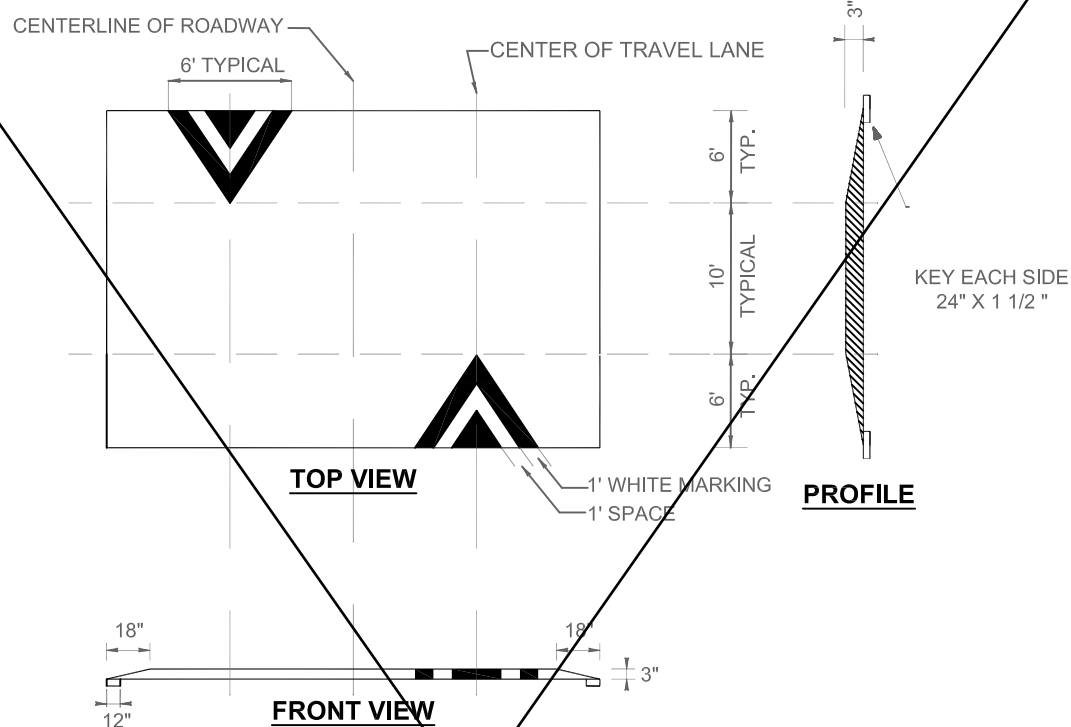
### 1 LANE ROAD



BCTED REF. NO 240820060

REVISIONS				THE CORRADINO GROUP, INC GORKY CHARPENTIER P.E. LICENSE NUMBER 47523 4055 N.W. 97TH AVENUE, DORAL, FL, 33178 PH:(305)594-0735 FAX:(305)594-0755	CITY OF COOPER CITY	TRAFFIC CALMING PILOT PROGRAM	SHEET NO.
DATE	DESCRIPTION	DATE	DESCRIPTION				SC-10

# FLAT TOPPED SPEED TABLE MUTCD MARKINGS FIGURE 3B-30, OPTION "A"



**NOTES:**

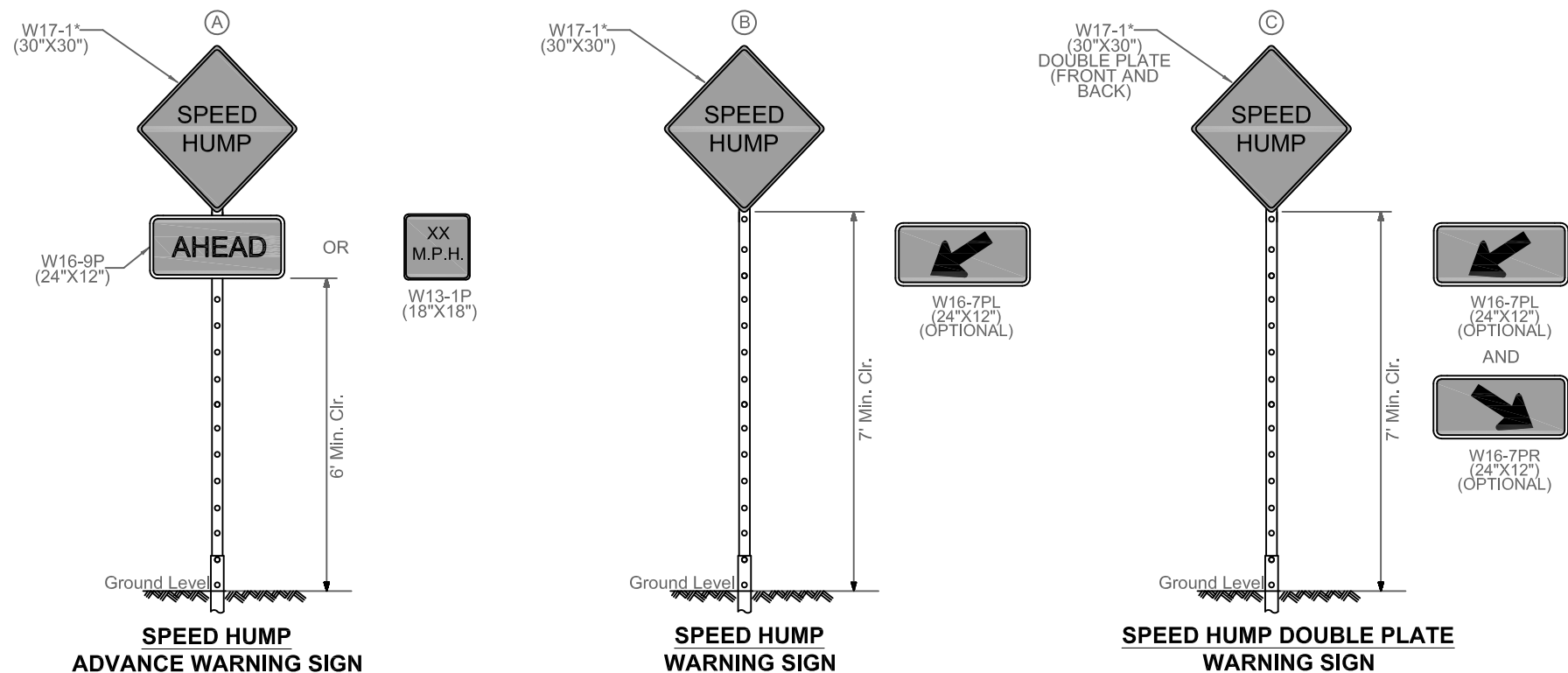
THE FOLLOWING IS A TYPICAL INSTALLATION OF A SPEED HUMP WITHIN THE MUNICIPAL SERVICE DISTRICT AREA OF BROWARD COUNTY.

- THE SPEED HUMP SHALL BE TWENTY-TWO (22) FEET IN LENGTH FOR THE WIDTH OF THE ROADWAY (TYPICALLY TWENTY-TWO [22] FEET), WITH THE FOLLOWING CHARACTERISTICS:
  - HEIGHT OF THREE (3) INCHES
  - TEN (10) FOOT FLAT TOP
  - SIX (6) FOOT TRANSITIONS ON BOTH THE NEAR AND THE FAR SIDES
  - EIGHTEEN (18) INCH TRANSITIONS ON BOTH CURB SIDES
- KEY CUT TWENTY-FOUR (24) INCHES ON BOTH THE NEAR AND THE FAR SIDES WITH TWELVE (12) INCHES NEXT TO SPEED HUMP AND TWELVE INCHES UNDERNEATH, FOR A DEPTH OF ONE AND A HALF (1 1/2) INCHES.
- KEY CUT TWELVE (12) INCHES ON BOTH CURB AND SIDE EDGES, UNDERNEATH THE SPEED HUMP, FOR A DEPTH OF ONE AND A HALF (1 1/2) INCHES.
- PAVEMENT MARKINGS SHALL BE IN ACCORDANCE WITH THE MANUAL ON UNIFORM TRAFFIC CONTROL DEVICES (MUTCD) FIGURE 3B-30 OPTION "A".
  - FOR EACH DIRECTION OF TRAVEL, INSTALL TWO (2) CHEVRONS, ONE (1) FOOT WHITE PAVEMENT MARKING, SPACED ONE (1) FOOT APART ON A LENGTH OF SIX (6) FEET CENTERED ON THE TRAVEL LANE, PLACED ON THE TRANSITION ONLY.
  - SIX (6) INCH WHITE THERMOPLASTIC EDGE LINE TO BE REPLACED ALONG SIDE OF THE SPEED HUMP, IF THIS EDGE LINE PREVIOUSLY EXISTED.

**OTHER INFORMATION:**

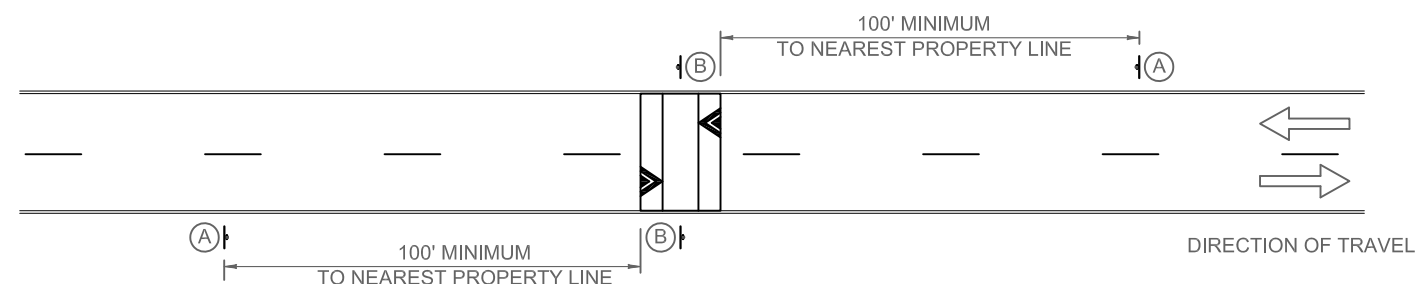
- ALL SPEED HUMPS SHALL BE INSTALLED IN TWO (2) LIFTS OF S3 ASPHALT.
- TACK COAT TO BE APPLIED PRIOR TO LAYING THE S3 ASPHALT.
- AN APPROVED MAINTENANCE OF TRAFFIC PLAN SHALL BE ESTABLISHED FOR EACH SPEED HUMP INSTALLATION.
- INSTALLATION SHALL BE IN COMPLIANCE WITH THE FDOT STANDARD SPECIFICATIONS FOR ROAD AND BRIDGE CONSTRUCTION 2023-2024.

# SPEED HUMP WARNING SIGNS PER MUTCD FIGURE 2C-6

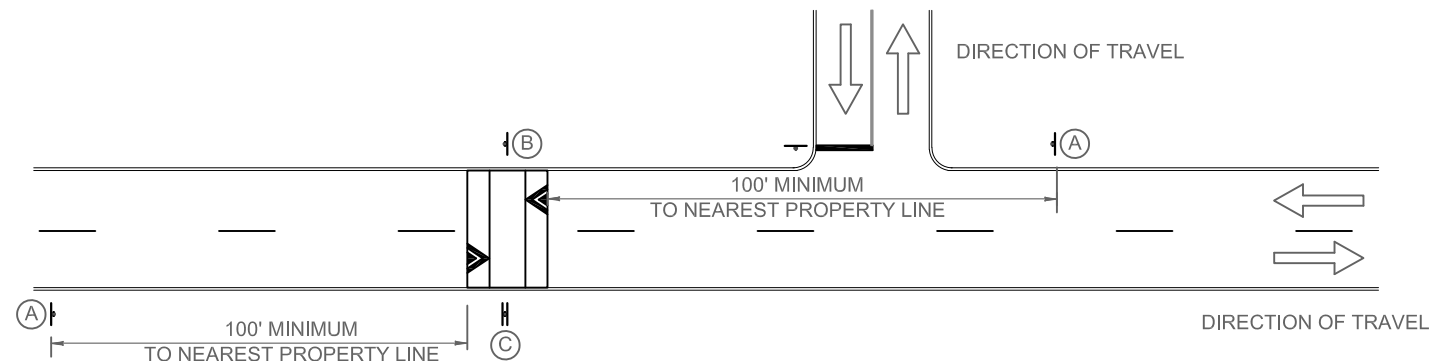


\*USE 36" X 36" ON MULTILANE ROADWAYS

**STANDARD**



**INTERSECTION**



BCTED REF. NO 240820060

REVISIONS	
DATE	DESCRIPTION



**PUBLIC WORKS DEPARTMENT  
TRAFFIC ENGINEERING DIVISION**

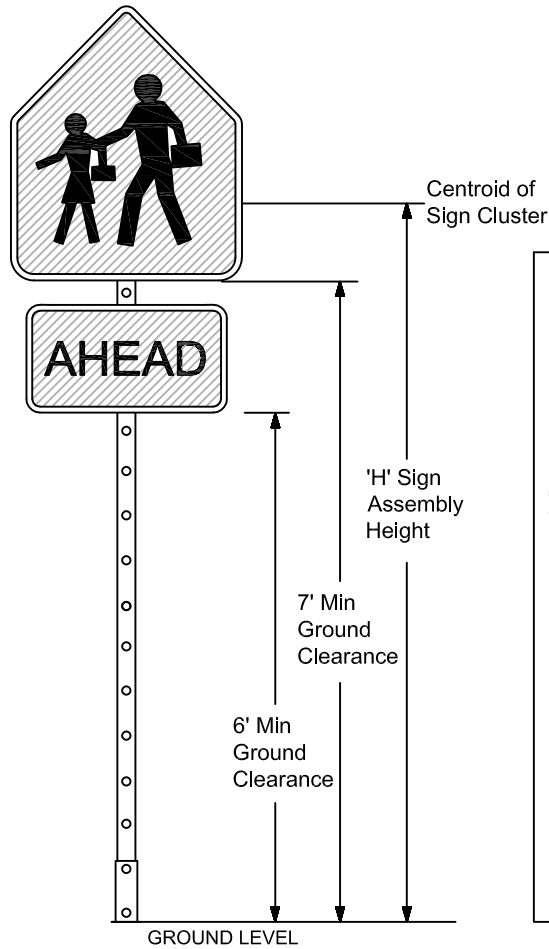
DESIGN BY: LIANA BORREGO CARMONA, P.E.    SCALE: NTS  
 DRAWN BY: STEPHON RAMOUTAR  
 CHECKED BY: LEI CAI, P.E., PTOE

## SPEED HUMP DETAILS AND SPECIFICATIONS

**SHEET NO.**  
SC-11

**GUIDE TO USE THIS STANDARD:**

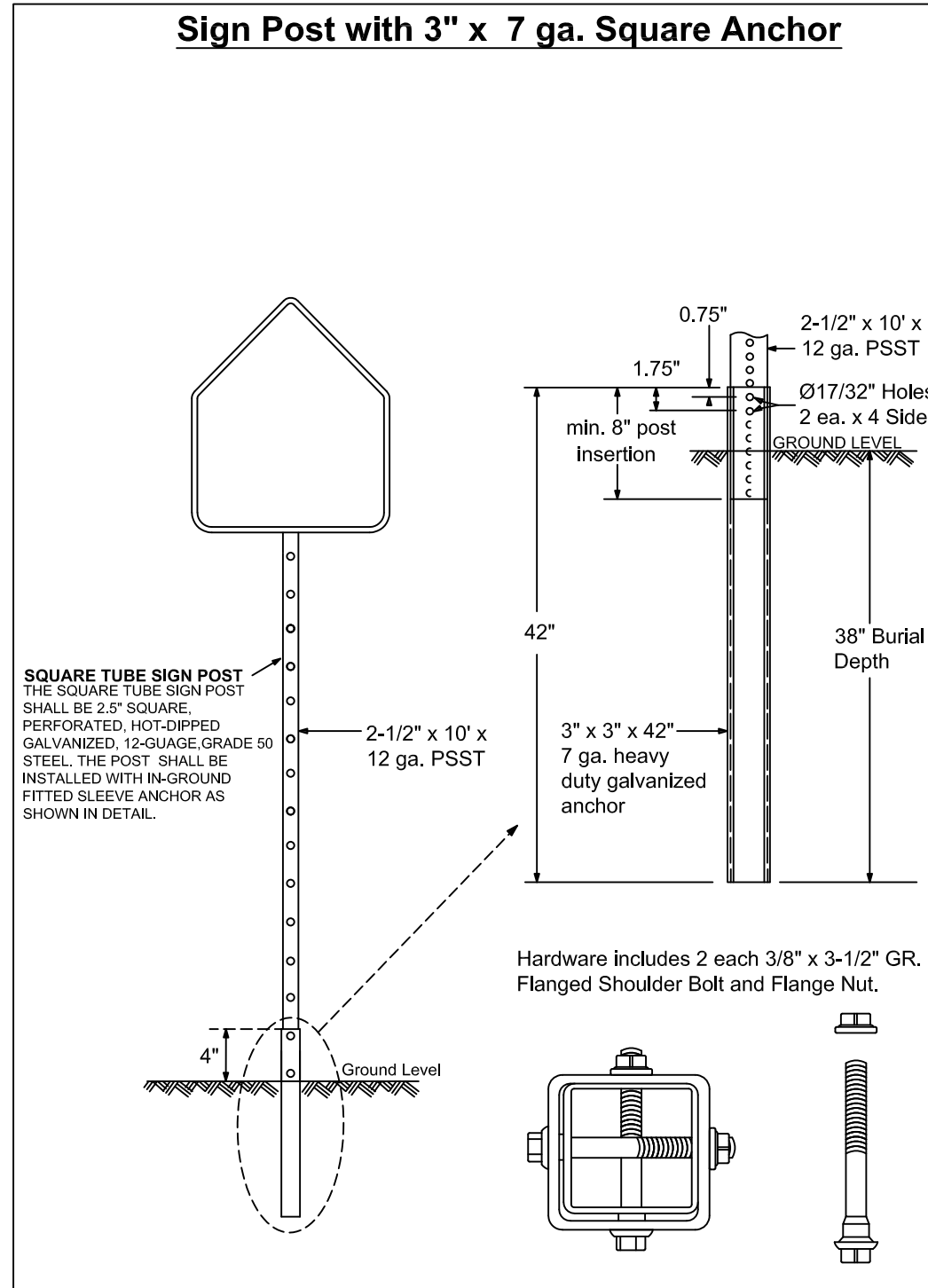
1. Calculate the Total Panel Area and the centroid 'C' for an individual sign or a sign cluster.
2. Determine the height 'H' from the groundline for the individual sign or the cluster.
3. Consult the Post Size Table and find the intersection point.
4. Design the post and the foundation according to the required Post Size and Assembly Details.



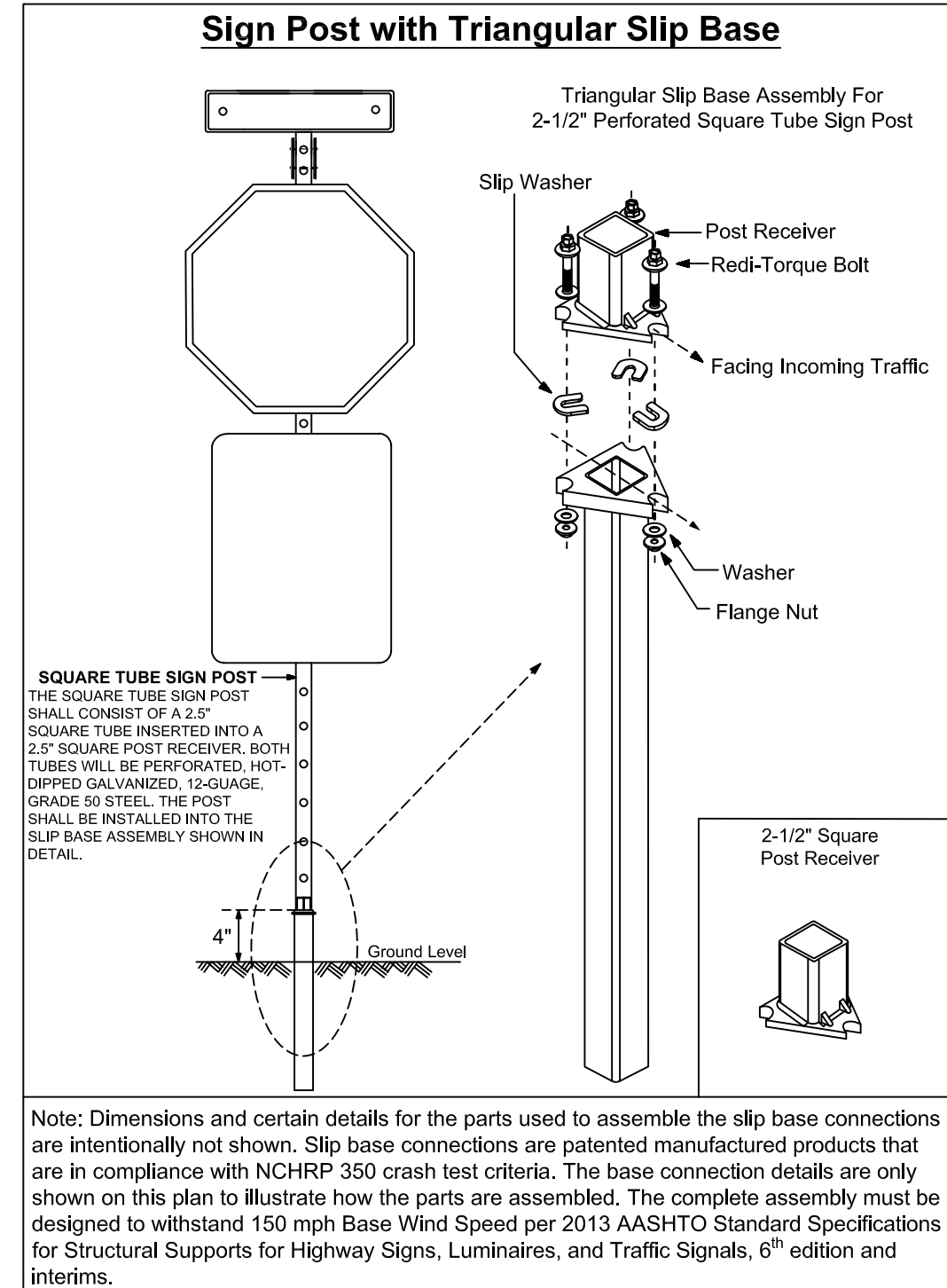
Post Size Table	
Total Panel Area (sf)	'H' Sign Assembly Height (ft) (measure from ground)
	8    8.5    9    9.5    10
3	
4	
5	Sign Post with 3" x 7 ga. Square Anchor
6	
7	
8	
9	
10	
11	
12	
13	Sign Post with Triangular Slip Base Assembly
14	
15	
16	
17	
18	Two Post Installation Required with Triangular Slip Base
19	
20+	

\*REGARDLESS OF POST SIZE TABLE; IF A SIGN PANEL IS EQUAL TO OR GREATER THAN 4 FEET IN WIDTH, A TWO POST INSTALLATION IS REQUIRED WITH A TRIANGULAR SLIP BASE.

**Sign Post with 3" x 7 ga. Square Anchor**



**Sign Post with Triangular Slip Base**



BCTED REF. NO 240820060

REVISIONS	
DATE	DESCRIPTION
03-21-2017	UPDATED POST SIZE
11-24-2020	ADDED POST SIZE NOTE
02-05-2021	UPDATED POST BASE HEIGHT



PUBLIC WORKS DEPARTMENT  
TRAFFIC ENGINEERING DIVISION

DESIGN BY: YVES D'ANJOU, P.E.      SCALE: NTS

DRAWN BY: STEPHON RAMOUTAR

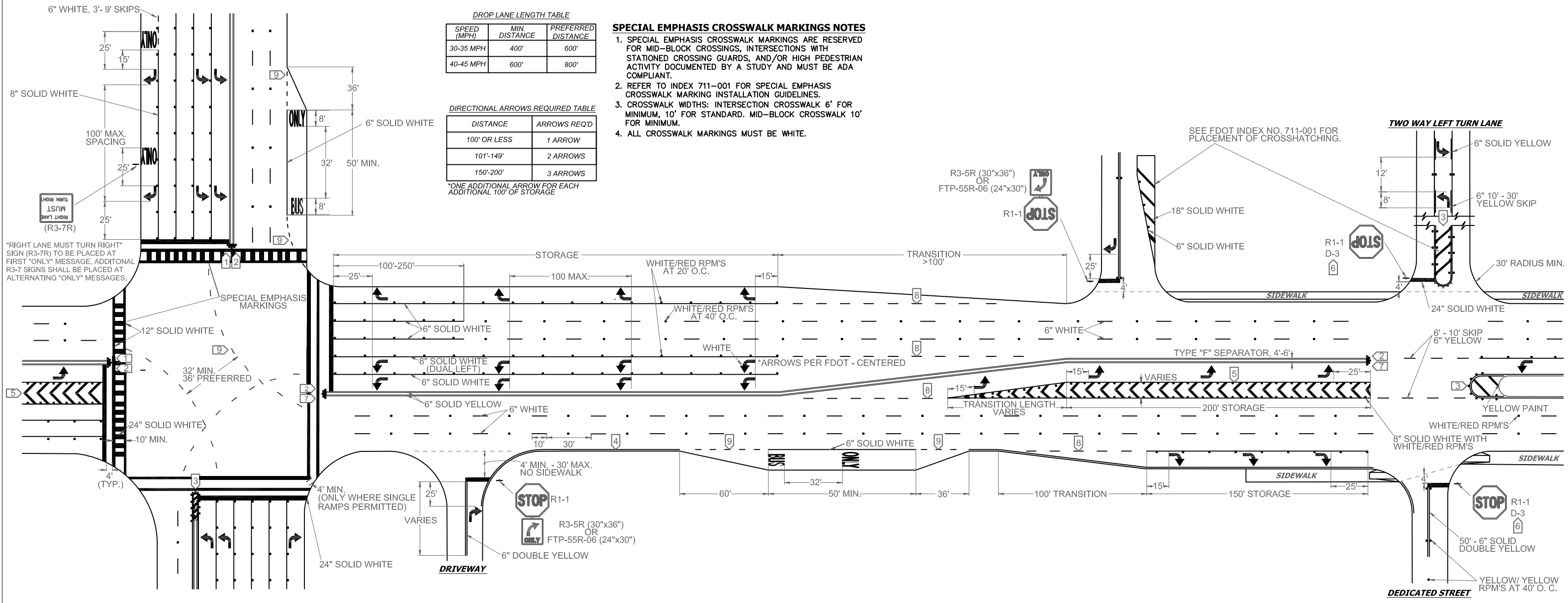
CHECKED BY: ANDREW SEBO, P.E., PTOE

**GROUND SIGN ASSEMBLY  
DETAILS**

SHEET NO.

SC-12





**DROP LANE LENGTH TABLE**

SPEED (MPH)	MIN. DISTANCE	PREFERRED DISTANCE
30-35 MPH	400'	600'
40-45 MPH	600'	800'

**DIRECTIONAL ARROWS REQUIRED TABLE**

DISTANCE	ARROWS REQ'D
100' OR LESS	1 ARROW
101'-149'	2 ARROWS
150'-200'	3 ARROWS

\*ONE ADDITIONAL ARROW FOR EACH ADDITIONAL 100' OF STORAGE

**SPECIAL EMPHASIS CROSSWALK MARKINGS NOTES**

- SPECIAL EMPHASIS CROSSWALK MARKINGS ARE RESERVED FOR MID-BLOCK CROSSINGS, INTERSECTIONS WITH STATIONED CROSSING GUARDS, AND/OR HIGH PEDESTRIAN ACTIVITY DOCUMENTED BY A STUDY AND MUST BE ADA COMPLIANT.
- REFER TO INDEX 711-001 FOR SPECIAL EMPHASIS CROSSWALK MARKING INSTALLATION GUIDELINES.
- CROSSWALK WIDTHS: INTERSECTION CROSSWALK 6' FOR MINIMUM, 10' FOR STANDARD. MID-BLOCK CROSSWALK 10' FOR MINIMUM.
- ALL CROSSWALK MARKINGS MUST BE WHITE.

"RIGHT LANE MUST TURN RIGHT" SIGN (R3-7R) TO BE PLACED AT FIRST "ONLY" MESSAGE. ADDITIONAL R3-7 SIGNS SHALL BE PLACED AT ALTERNATING "ONLY" MESSAGES.

SEE FDOT INDEX NO. 711-001 FOR PLACEMENT OF CROSSHATCHING.

- NOTES**
- ALL PAVEMENT MARKINGS SHALL BE ALKYD BASED THERMOPLASTIC AND FULLY RETROREFLECTORIZED.
  - ALL PAVEMENT MARKINGS ON PAVEMENT SYSTEMS SHALL BE 3M 380/381 SERIES TAPE OR EQUIVALENT AND APPLIED WITH P60 ADHESIVE AS PER MANUFACTURERS SPECIFICATIONS.
  - ALL PAVEMENT MARKINGS AND SIGNING SHALL BE IN ACCORDANCE WITH THE "MANUAL ON UNIFORM TRAFFIC CONTROL DEVICES", BCTED STANDARDS, AND FDOT DESIGN STANDARDS.
  - SEE FDOT INDEX NO 706-001 FOR PLACEMENT OF RPM'S (FOR BULLNOSE RPM TREATMENT, SEE LEGEND NO. 1)
  - RPM'S SHALL BE CLASS "B" OR EQUIVALENT, APPLIED WITH EPOXY OR BITUMINOUS ADHESIVE.
  - FDOT APPROVED SEALER SHALL BE USED WHEN APPLYING MARKINGS ON CONCRETE.
  - FOR BIKE LANE DETAILS SEE FDOT INDEX NO. 711-002.
  - EXISTING MARKINGS SHALL BE REMOVED BY WATER BLASTING OR SAND BLASTING.
  - ALL STOP LINES TO BE 4' BEHIND CROSSWALK OR SIDEWALK.
  - PAVEMENT MARKING REFLECTIVITY SHALL BE UNIFORM ACROSS THE ENTIRE STRIPE AND SHALL HAVE A MINIMUM REFLECTIVITY READING OF 250 MILLICANDELAS FOR WHITE AND 175 MILLICANDELAS FOR YELLOW.
  - ALL PRODUCTS MUST BE ON FDOT'S APPROVED PRODUCTS LIST (APL).
  - RPMS SHALL NOT BE INSTALLED ADJACENT TO BIKE LANES.
  - LONGITUDINAL CROSSWALK MARKINGS SHALL BE INSTALLED AT ALL CROSS STREETS ON COUNTY ROADS THAT ARE FOUR LANES OR GREATER.

**LEGEND**

**1 YELLOW/YELLOW RPM DETAILS**

**2 MEDIAN NOSE PAINT DETAILS**

**3 PAINTED MEDIAN DETAILS**

**4 EDGE LINE DETAILS**

**5 CHEVRON DETAILS - CROSSWALK AREAS AND IN FRONT OF CURB RAMPS**

**6 STREET NAME BLADE DETAILS**  
 SEE BCTED STOP SIGN AND STREET IDENTIFICATION ASSEMBLY TYPICAL DETAILS.

**7 TYPE IV SEPARATOR DETAILS**

**8 6'-10' SKIP DETAILS**  
 6'-10' SKIPS 6" WHITE SHALL BE USED FOR THE FOLLOWING CONDITIONS:  
 • TRANSITIONS AT ALL LEFT AND RIGHT TURN LANES

**9 2'-4' SKIP DETAILS**  
 2'-4' SKIPS 6" WHITE SHALL BE USED FOR THE FOLLOWING CONDITIONS:  
 • RADIUS GUIDE LINES BETWEEN DUAL LEFTS TURN MOVEMENT (90' RADIUS PREFERRED OR AS NOTED ON PLANS)  
 • BUS BAY TRANSITIONS

**STOP SIGN NOTE**  
 WHERE SIDE ROADS INTERSECT A MULTI LANE STREET OR HIGHWAY THAT HAS A SPEED LIMIT OF 45 MPH OR HIGHER, THE MINIMUM SIZE OF THE STOP SIGNS FACING THE SIDE ROAD APPROACHES, EVEN IF THE SIDE ROAD ONLY HAS ONE APPROACH LANE, SHALL BE 36"X36".  
 WHERE SIDE ROADS INTERSECT A MULTI-LANE (INCLUDING TURN LANE) STREET OR HIGHWAY THAT HAS A SPEED LIMIT OF 40 MPH OR LOWER, THE MINIMUM SIZE OF THE STOP SIGN FACING THE SIDE ROAD APPROACHES SHALL BE 36"X36".  
 BCTED REF. NO 240820060

**REVISIONS**

DATE	DESCRIPTION
11-24-2020	UPDATED NOTES
04-14-2021	UPDATED NOTES
05-06-2022	UPDATED NOTES



**PUBLIC WORKS DEPARTMENT  
 TRAFFIC ENGINEERING DIVISION**

DESIGN BY: CARMELO CARATTOZZOLO, P.E. SCALE: NTS  
 DRAWN BY: STEPHON RAMOUTAR  
 CHECKED BY: CARMELO CARATTOZZOLO, P.E.

**PAVEMENT MARKINGS  
 AND SIGNS  
 DETAILS**

**SHEET  
 NO.  
 SC-13**