

3701 West Main Street
Leesburg, FL 34748
Call Us: (352) 787-1234
<http://www.crystaltractor.com/>

CRYSTAL
TRACTOR & EQUIPMENT

2024 KUBOTA MX SERIES MX6000

SELLING PRICE - \$45,390.00

The economical choice for pulling larger implements



INFORMATION

2024 KUBOTA MX SERIES MX6000 HST 4WD

The MX Series is not only affordable but also provides year round comfort with the new CAB or ROPS models. Versatility is unmatched; available in either 2WD or 4WD models and either Gear or HST Transmission variations – with choices between 55.5 HP to 63.4 gross horsepower – the MX Series tractors can tackle just about any job that comes their way. This mid-size tractor is versatile enough to handle almost any work site or application.

Features may include:

MEET THE MX SERIES

#1 rated tractor brand for durability and owner experience in the U.S.

AFFORDABILITY

Continuing the reputation for being affordable, the MX series provides a wide variety of models to fit your needs.

COMFORT

Built to deliver comfort with the Cab or ROPS model. This feature packed cab is ready to take on any task. No matter how cold, wet or dusty, this cab is ready to withstand the elements.

VERSATILITY

MX Series tractors are renowned for their versatility and ease of operation. But the new MX Series takes it to the next level with improvements that allow the operator to do more with less effort. Improvements include increased engine horsepower for operating a wider range of implements and a new hydraulic PTO switch that simplifies PTO operations.

BUILT TO LAST

- Kubota Diesel Engine – Kubota is the #1 manufacturer in the world for under 100 HP non-automotive, multi-cylinder diesel engines
- Heavy Duty Construction – From the heavy duty front axle to the cast steel transmission and rear end, all the way to the steel hood and fenders, the Kubota is built to last
- Kubota Designed, Kubota Built – Front to rear, the Kubota tractor is designed and built by Kubota for our Kubota customers. You won't find a "Kubota" re-branded tractor built by others, only Kubota quality through and through.

YEAR-ROUND COMFORT

Rain or shine, hot or cold, day or night, the MX Series's new factory-installed cab is not only affordable, but also provides year-round comfort. This wide, spacious cab features:

- Wide Platform - the wide, flat platform with rubber floor mats allows for plenty of legroom and ease of getting in and out of the tractor
- Tilt Steering - adjust the steering wheel to fit your needs
- A/C & Heater - allows for year-round comfort, no matter the weather elements
- Ease of Use - operator levers and controls are ergonomically located for easy access and operation
- New High-Back Suspension Seat - the new high-back suspension seat offers greater comfort to help reduce fatigue from long hours of work. In addition
- Accessorize to Your Needs - Choose between many different accessories to further fit your needs. Available accessories include a radio, side mirrors, rear work lights, air ride seat and more!

MX ROPS

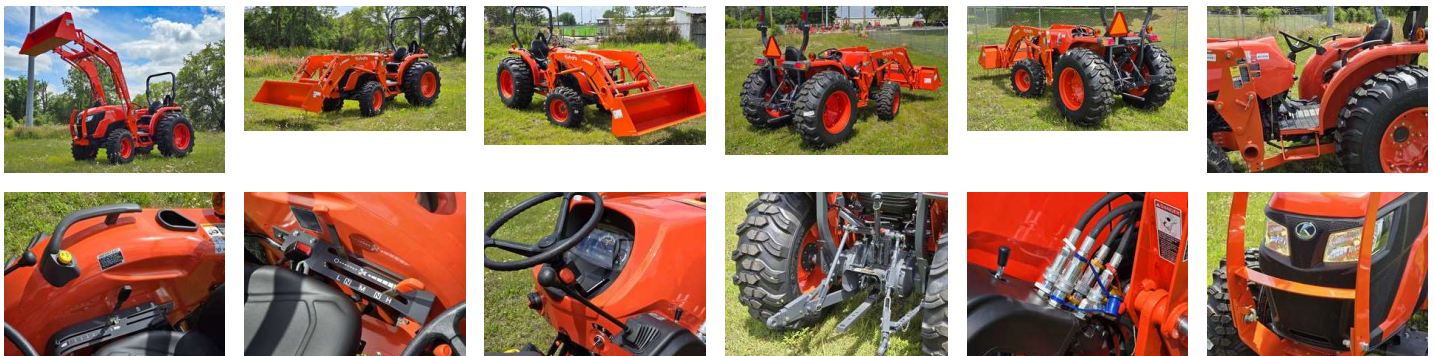
The new MX Series provides deluxe features to the ROPS operator station for improved comfort, all while maintaining affordability. The wide, spacious ROPS features:

- Wide Platform - the wide, flat platform with rubber floor mats allows for plenty of legroom and ease of getting in and out
- Ease of Use - with control levers such as the gear-shift transmission, electric-over hydraulic PTO switch or 3-Point Hitch raise/lower conveniently located next to the operator on the left and ride side, operating is simple and easy to use

MULTIPLE POWERTRAIN OPTIONS

3-Range HST (Hydrostatic Transmission) – Kubota's MX Series Tractors feature a servo control HST, which makes operating smooth and easy. The servo control allows the operator to apply a consistent amount of pressure on the HST pedal to travel forward or reverse, regardless of the load on the tractor.

PHOTOS





HIGHLIGHTS

- **Sale Price** \$45,390.00
- **Location** Leesburg
- **Condition** New
- **Availability** In Stock
- **Year** 2024
- **Make** Kubota
- **Model** MX Series MX6000
- **Engine** Kubota
- **Horsepower** 63
- **Transmission** Hydrostatic 3-Range
- **Fuel Type** Diesel
- **Status** Available
- **Drive** 4WD

SPECIFICATIONS

2024 Kubota MX Series MX6000	
Year	2024
Manufacturer	Kubota
Model Name	MX Series
Trim Name	MX6000
Generic Type (Primary)	Utility
Engine	
Engine Power	(Gross) 63.4 hp
PTO	
PTO Power, Rated Engine Speed	51.7 hp Standard: 540 rpm
Drivetrain	
Transmission	HST (3 range)
Driveline	4WD
Hydraulics	
Hydraulic Flow	9.5 gpm
Hitch/Type	Three Point: Category I & II
Capacities	
Hitch Lift Capacity	Loader: 2275 (1032 kg)
Features	Operator Platform: ROPS / CAB
drive	4WD