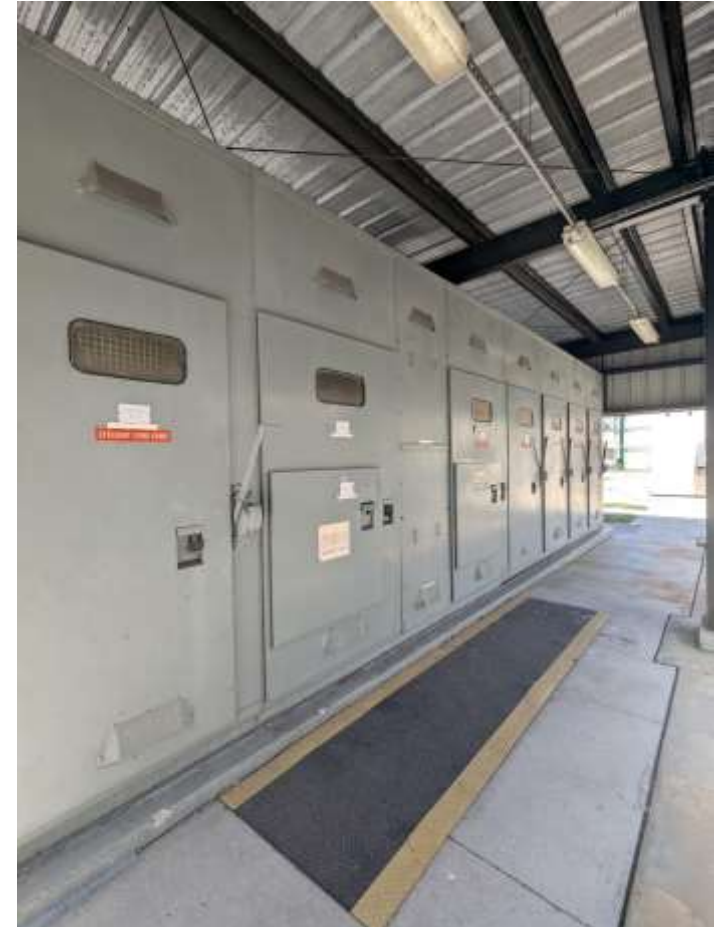


WTP and WWTP Electrical System Improvements Project

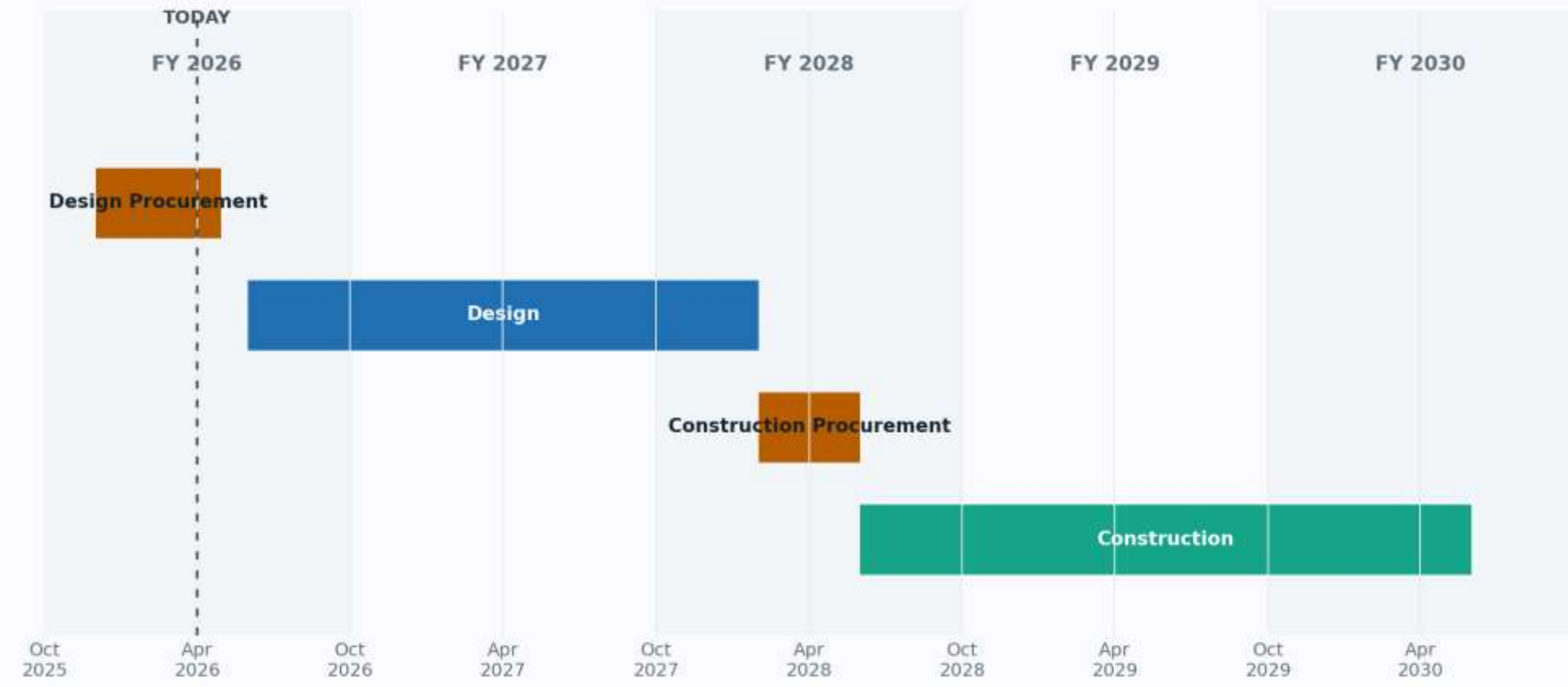
This project will modernize the plant's electrical distribution system to improve safety, reliability, and redundancy while maintaining continuous operations. Much of the existing electrical infrastructure dates to the 1970s and has exceeded its expected useful life, making replacement of critical components a priority, including the main switchgear, standby generators, transformers, switchboards, and panelboards. The project also includes upgrades to the bulk diesel fuel system and evaluation of the plant's distribution voltage and grounding system.

Construction: \$20.5 million

Design & CEI : \$4.1 million



Electrical | Status & Schedule



Electrical | Funding Summary

Total project cost
\$24.6M



Available funding
\$4.3M
Utility Capital Funds

Targeted funding
\$10.0M
Community Project Funding

Targeted funding
\$10.3M
Resilient FL Grant