

# THE CORRADINO GROUP, INC.

CORRADINO

ENGINEERS • PLANNERS • PROGRAM MANAGERS • ENVIRONMENTAL SCIENTISTS

Sent via Email to  
REggleston@coopercity.gov

May 17, 2024

Ryan Eggleston  
City Manager  
City of Cooper City  
9070 SW 51st Street  
Cooper City, FL 33328

Dear Mr. Fleming:

It is our understanding that the City of Cooper City has requested a task work order proposal from The Corradino Group, Inc. for the preparation of design plans and permitting for the installation of speed cushions and the appropriate signage at multiple locations within the City of Cooper City.

The Corradino Group appreciates this opportunity to submit this task work order proposal to the City of Cooper City. We look forward to providing the best Consultant Services possible to the City of Cooper City. These services will be provided per the existing Professional Civil Engineering Continuing Services Agreement dated 05/07/2021.

Sincerely,

Joseph M. Corradino, AICP  
President  
The Corradino Group, Inc.

## CONSULTING SERVICE AUTHORIZATION

### Statement of Work (SOW)

CITY P.O. NO. \_\_\_\_\_

CITY EXPENSE CODE \_\_\_\_\_

**TITLE: Traffic Calming Pilot Program Design & Evaluation**

#### **I. PROJECT DESCRIPTION:**

The Corradino Group completed a City-wide traffic calming study along fifty-one (51) corridor segments throughout the City in February 2024. The final results of the traffic study were presented to City Commission on Tuesday March 12th, 2024 identifying various corridors of concern and potential traffic calming improvements. Based on additional discussions with City staff and the feedback received, it was agreed that a Traffic Calming Pilot Program for the installation of speed cushions along some of the corridors where speeding concerns were identified may provide a reduction of travel speed within the City while more permanent solutions are being programmed by the City for future fiscal years.

The following is a list of the proposed speed cushions approximate locations part of the Pilot Program. These are also identified in EXHIBIT ONE of this document.

- Hiatus Road between SW 56th Court & SW 55th Street.
- Hiatus Road between SW 57th Circle. & SW 59th Street.
- SW 52nd Street at approximately 9450 SW 52nd Street
- SW 113th Street between SW 56th Circle & SW 58th Street
- SW 118th Avenue between SW 50th Street & SW 51st Court
- Stonebridge Parkway between Forest Hill Dive. & Access Road
- SW 49th Street between SW 120th Avenue & SW 118th Avenue
- Stonebridge Parkway between Anchor Way & Dockside Drive
- SW 52nd Street between SW 89th Terrace & SW 89th Way

The Corradino Group, Inc. along will provide these services as outlined in the below detailed scope of services.

#### **II. SCOPE OF SERVICES:**

##### **TASK 1. Design Services**

##### **2e) Design and Permitting Services**

- The Corradino Group will prepare engineering plans utilizing the most recent and available aerial photography from the 2019 FDOT libraries for the installation of speed cushions and its necessary signage at (9) different

locations within the City as previously listed in the PROJECT DESCRIPTION section of this document.

- A site visit will be completed to confirm the existing conditions of the nine (9) locations and determine the best location for the required signage for both approaches to the speed cushions.
- Design Plans will be prepared for one initial 90% Design Phase submittal for City of Cooper City and Broward County Traffic Engineering (BCTED) Review.
- A Final Set of Design Plans will be prepared for one Signed and Sealed Plan submittal addressing any comments received from Cooper City and BCTED of the 90% Design Phase submittal.
- No opinion of probable construction costs is being prepared as part of this task work order.
- It is our understanding that the City has already contacted a supplier for the speed cushions. These engineering plans will be limited to the speed cushions specifications provided by the City and shown in EXHIBIT TWO

**Lump Sum fee of \$ 27,023.00**

## **TASK 2. Traffic Analysis**

### **2a) Data Collection**

72-hour of bi-directional speed /volume pneumatic tube counts will be collected at the following nine (9) local roadway segments within the City of Cooper City, Florida after the speed cushions have been installed for a minimum of **six (6) months**. The tube counts will be place from Tuesday through Thursday in a normal week. The final traffic count locations will be approved by the City prior to deployment of the traffic data collection devices.

- Hiatus Road- Stirling Road to SW 55th Street (2-locations)
- SW 52nd Street- SW 94th Avenue to SW 95th Avenue (1 location)
- SW 113th Avenue- Stirling Road to SW 55th Street (1 location)
- SW 118th Avenue- SW 49th Street to SW 52nd Street (1 location)
- Stonebridge Parkway- W Lake Blvd. to NE Lake Boulevard (1 location)
- SW 49th Street- Flamingo Road to 118th Avenue (1 location)
- Stonebridge Parkway- NE Lake Blvd. to SE Lake Blvd. (1 location)
- SW 52nd Street- SW 90th Ave to SW 88th Terrace (1 location)

**Lump Sum fee of \$ 3,000.00**

## **2b) Traffic Analysis & Technical Memorandum**

The consultant will complete a speed and volume evaluation for the local roadway segments listed in **Task 2a**. Crash history will also be obtained from Signal Four Analytics and reviewed for the most recent and available time periods along the study corridor segments before and after the pilot project was implemented, but not less than six (6) months after the speed cushion installation. The new data will be compared to the data previously collected for the City-Wide Traffic Calming Study dated February 2024, and the results of the study will be documented in memorandum format.

This phase includes attendance to up to one (1) public meeting to discuss the results of the Pilot Program. Any additional meetings will require an additional service agreement for the City's review and approval.

**Lump Sum fee of \$ 12,472.00**

The following are additional basis of scope for this task work order authorization.

- Any additional traffic data collection or analysis outside of the scope listed under TASK 2 will require an additional service agreement.
- Permitting Services are limited to submittal to the City of Cooper City and Broward County Traffic Engineering Division. Any additional permitting required will be provided as an additional service as requested by Cooper City.
- Note: This scope of services does not include preparation of the following: Topographic Survey, Typical Section Package, Pavement Design Package, Paving and Grading Plan, Drainage Modifications, Geotechnical Services, Sub Utility Engineering Services or Landscape Plans, if any of these services are required, an additional service agreement will be provided as requested by the City of Cooper City.
- This scope of services does not include the following services: Bidding Assistance, Post-Design Services, or Public Outreach. If any of these services are required, an additional service agreement will be provided as requested by the City of Cooper City .
- This scope of services includes presentation at one City of Cooper City Commission meeting to present the results of the technical memorandum.

## **III. BUDGET:**

The Corradino Group, Inc. will provide to the City of Cooper City the basic services described in this scope of services for a lump sum budget of **\$42,495.00** .

**IV. ANTICIPATED SCHEDULE:**

The Corradino Group, Inc. will complete **TASK 1 within 120 days** from the issuance of a Notice to Proceed by the City of Cooper City and **TASK 2 (Traffic Analysis) within 90 days** after the speed cushions have been in placed for a minimum of six (6) months.

**V. ACCEPTANCE OF PROPOSAL**

**Traffic Calming Pilot Program Design & Evaluation**

Approved by:

**CITY OF COOPER CITY**

Date: \_\_\_\_\_

By: \_\_\_\_\_

\_\_\_\_\_  
(Witness)

\_\_\_\_\_  
(Witness)

**THE CORRADINO GROUP, INC.**

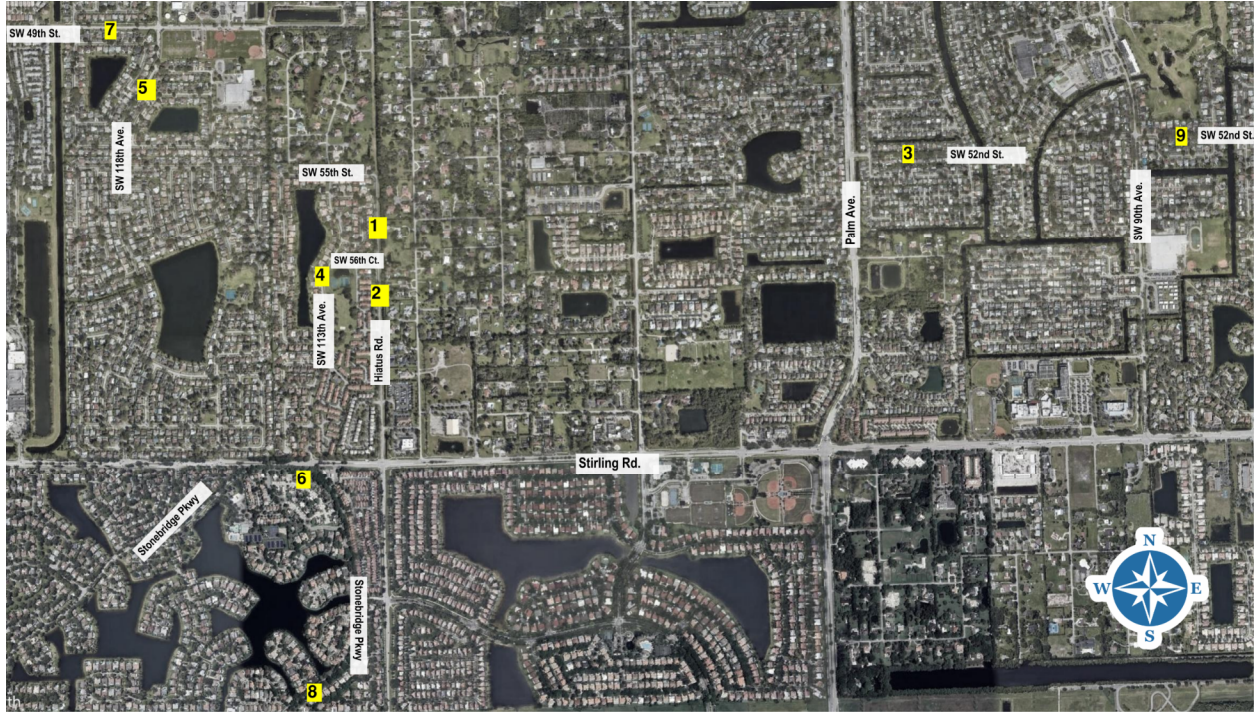
Date: \_\_\_\_\_

By: \_\_\_\_\_  
**Joseph M. Corradino, President**

\_\_\_\_\_  
(Witness)

\_\_\_\_\_  
(Witness)

**EXHIBIT ONE**  
**SPEED CUSHION APPROXIMATE LOCATIONS**



## EXHIBIT TWO SPEED CUSHION SPECIFICATIONS

### Speed cushions:

Speed Cushions of various dimensions may be easily constructed utilizing patented tongue and groove 18" x 42" interlocking rubber modules. This two directional tongue and groove interlocking module system provides additional connection between the modules and increases stability of the installed speed cushion. Each module is bolted to the road using six fusion coated rust resistant lag bolts through a plastic shield installed in the pavement. All installation hardware and adhesive are supplied with each cushion. Speed cushions to meet MUTCD standard.

### Speed Cushions Specification and Features

Patented Interlocking tongue and groove module



#### **SPECIFICATIONS**

#### **Dimensions of the tongue and groove modules:**

**Width:** 18" (+/- 1/16")  
**Length:** 42" (+/- 1/8")  
**Thickness:** 3" (+/- 1/8")

#### **Dimensions of the Cushions are changeable by**

**Width:** 18" increments  
**Length:** 42" increments

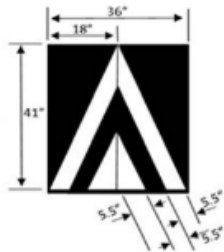
#### **Standard Dimensions of Speed Cushions**

7' x 6' x 3" • 8 modules  
 10.5' x 6' x 3" (Flat surface 72" x 42") • 12 modules  
 14' x 6' x 3" (Flat surface 72" x 84") • 16 modules  
 21' x 6' x 3" (Flat surface 72" x 126") • 20 modules  
 Entrance and exit gradient: 1:15 (7%) Lip: .25"  
 Side gradient: 1:3 (35%) Lip: .25"

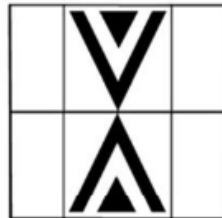
#### **Physical properties:**

**Material:** Compression molded 100% recycled synthetic and natural rubber composite  
**Tensile strength:** minimum 500 psi  
**Shore hardness:** minimum 70A  
**Specific gravity:** 1.1  
**Deformation Rate:** None; 100% recovery  
**Skid Resistance:** 89 (Dry)

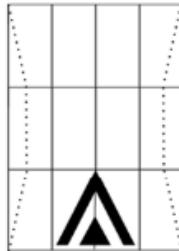
**Markings:** All markings are embedded into the rubber during the manufacturing process and have reflective qualities. The MUTCD pattern markings (as shown in drawings) are available in white only.



7' L x 6' W x 3" H

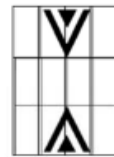


10.5' L x 6' W x 3" H

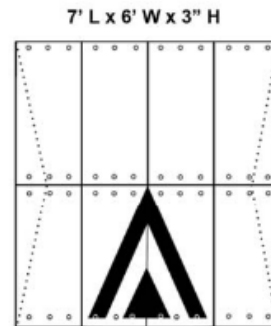


SC-1050603-M

10.5' L x 6' W x 3" H

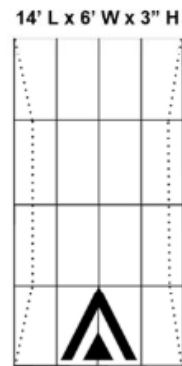


SC-1050603-2M



7' L x 6' W x 3" H

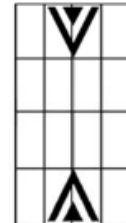
SC-070603-M



14' L x 6' W x 3" H

SC-140603-M

14' L x 6' W x 3" H



SC-140603-2M

