



## CITY COMMISSION STAFF REPORT

**DEPARTMENT:** Commission

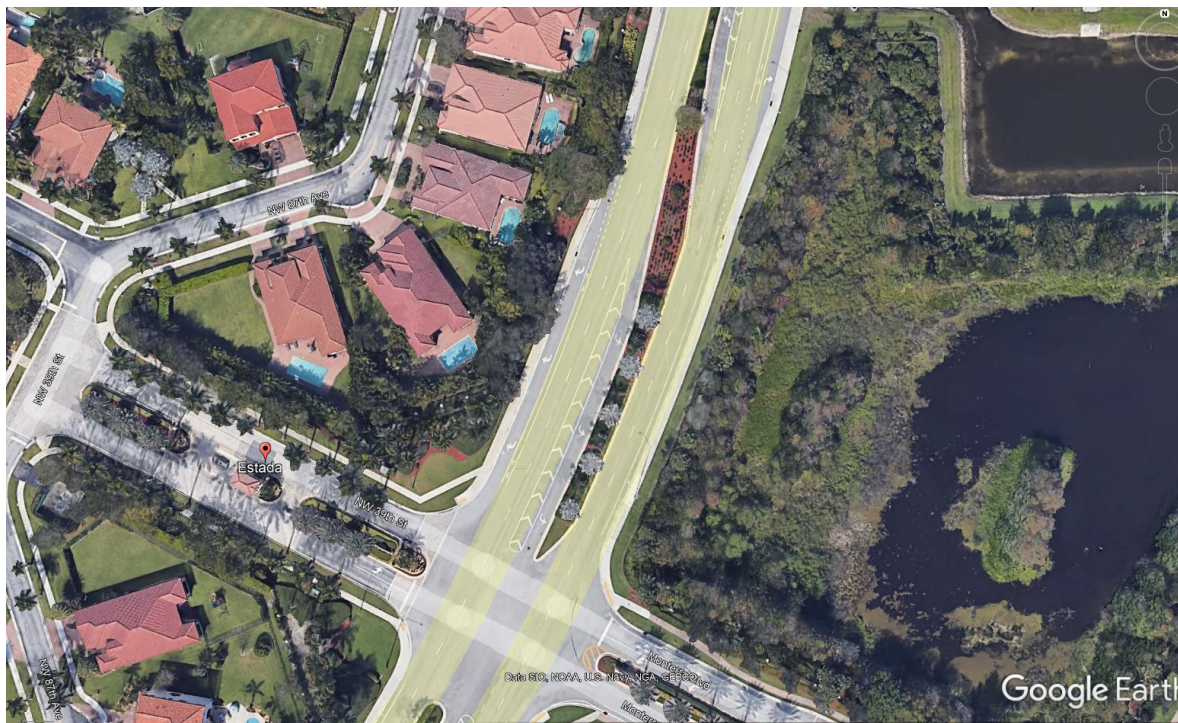
**SUBJECT:** Discussion on traffic calming devices on Pine Island in front of Estada –  
**Commissioner Pulcini**

**RECOMMENDATION:**

Commissioner Pulcini requests a discussion on calming devices on Pine Island in front of Estada.

**BACKGROUND OF ITEM:**

There have been many accidents at this turn. What makes this street particularly dangerous is, driving South to North, drivers have the impression of a country road, with no houses until the intersection appears after the turn. This makes the turn particularly dangerous.



**Attachments:**

1. Traffic Accidents by Frequency 2018-2022
2. Traffic Accidents by Severity 2018-2022