



# CONFIRE Ambulance Production Update

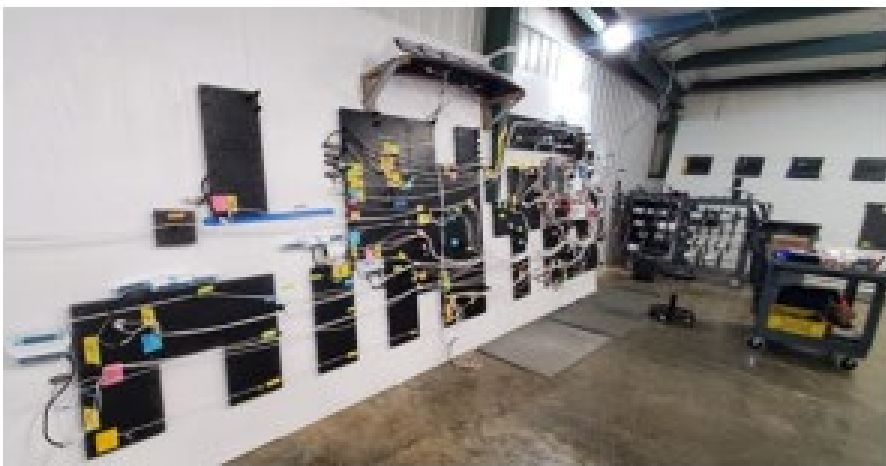
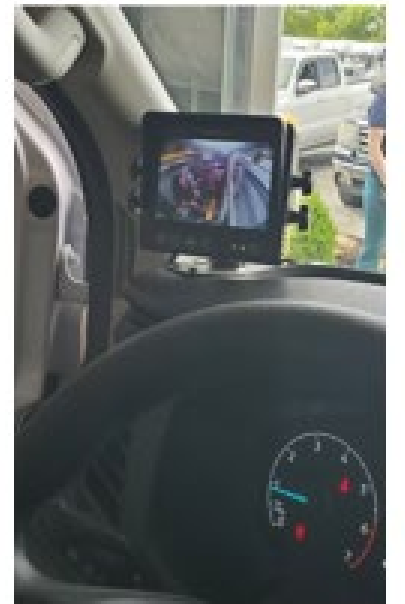
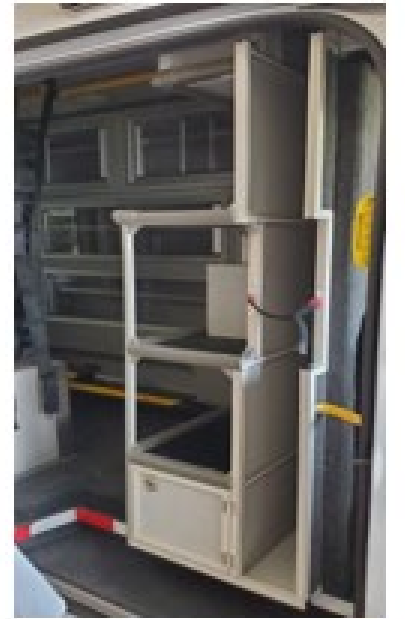
Advisement of CONFIRE's ambulance production progress

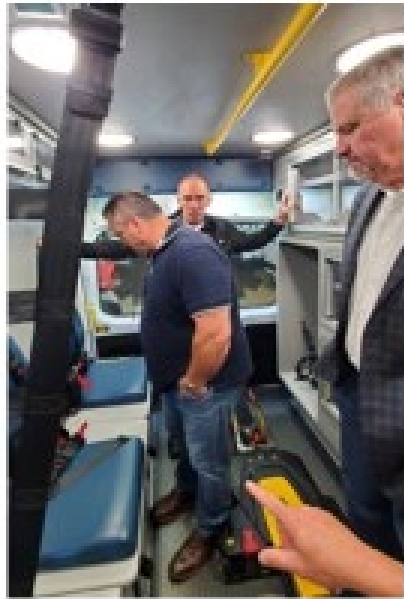


## Assembly Plant Visit

Priority Ambulance's OnDemand Specialty Vehicles assembly plant, in Jumpertown, Mississippi, is a sprawling facility assembling custom designed ambulances to meet our specific needs and requirements.

During the visit on 4/30/2024, staff members had the opportunity to witness firsthand the intricate processes involved in assembling these state-of-the-art vehicles.





# OnDemand Specialty Vehicle's Quality Assurance

## Comprehensive Inspection

Each ambulance undergoes a rigorous multi-point inspection to ensure all components, systems, and equipment meet stringent quality standards.

## Adherence to Regulations

Strict adherence to all applicable industry regulations, safety codes, and legal requirements, ensuring compliance at every stage of production.

## Skilled Technicians

Highly trained and experienced technicians meticulously assemble and inspect each ambulance, leveraging their expertise to maintain exceptional quality.

## Quality Assurance Audit Trail

Maintaining detailed documentation and an audit trail for every ambulance, ensuring traceability and accountability throughout the production process.

# Production Status



## Current Production Volumes

OnDemand Specialty Vehicles currently has over 200 ambulance chassis on site, which are in various stages of production and pre-production.

## Production Pipeline Breakdown

The facility's production stages are:

- Material Prep
- Production Prep
- Production Development
- Production Completion
- Outfit
- Inspection

## Projected Delivery Timeline

The estimated timeline for delivering our completed ambulances, taking into account the various production stages and any potential bottlenecks or delays, is 10-12 vehicles per week.

## Quality Assurance Measures

OnDemand Specialty Vehicles is committed to setting new industry benchmarks for safety, reliability, and innovation. The company's vehicles are built with the latest technologies and customized to our unique requirements.

## Production Capacity Utilization

With a weekly output of 10 to 20 vehicles, OnDemand Specialty Vehicles showcases its impressive production capabilities. If needed, staff can be increased to boost production numbers significantly.

# Upcoming Deliveries

- **Ambulance Delivery**

We anticipate the delivery of the next round of ambulances and several staff vehicles in late May, early June.

- **Increased Fleet Capacity**

The addition of this next round of ambulances will boost our overall fleet capacity to about 20% of the planned EMS system.

- **State-of-the-Art Vehicles**

These new ambulances are equipped with the latest medical equipment and advanced safety features, ensuring the highest level of patient care and crew safety during transportation.

# Estimated Delivery Schedule

● 2024/05/27

The anticipated start of weekly ambulance deliveries to our operations zones.

● 2024/06/17

Ambulance deliveries reach approximately 60% of planned system delivery.

● 2024/07/01

Ambulance deliveries reach near 100% of frontline and 75% of planned system.

● 2024/08/01

Complete delivery of our EMS system front-line and reserve ambulances.

● 2024/06/10

Ambulance deliveries reach approximately 40% of planned system delivery.

● 2024/06/24

Ambulance deliveries reach approximately 70% of planned system delivery.

● 2024/07/15

Ambulance deliveries reach approximately 90% of planned system delivery.



# Ambulance Production Process

The lifecycle of ambulance production project is a continuous process that continues immediately after accepting delivery in our operations zones.

