

RESOLUTION NO. 25-__

A RESOLUTION OF THE CITY OF COLUSA
REQUESTING THE CITY MANAGER TO INITIATE THE ENTITLEMENT PROCESS AND
NECESSARY CALIFORNIA ENVIRONMENTAL QUALITY ACT REVIEW FOR
ANNEXATION OF UNINCORPORATED TERRITORY TO THE CITY OF COLUSA
INVOLVING APPROXIMATELY 697.37 ACRES AND ADJACENT PUBLIC RIGHT-OF-
WAYS ACRES AND DEVELOPMENT OF CITY OWNED PROPERTY FOR FUTURE
CONSTRUCTION OF A CANNABIS OPERATION
(APN'S 017-020-024, -025, -026, -027, 017-030-079, -080 AND 015-130-128, -129, 015-130-
068, -082)

WHEREAS, the Council of the City of Colusa desires to initiate the entitlement process for annexation of unincorporated properties that are located in the sphere of influence and identified in the General Plan is attached here too and made part of hereof as Exhibit A, and;

WHEREAS, the Council of the City of Colusa desires to process a land swap with a private property owner who owns 83.66 acres (002-270-011, 002-270-012, 002-270-013) on the northern side of East Clay Street, and;

WHEREAS, the Council of the City of Colusa hereby gives the City Manager direction to execute necessary contracts and expend necessary funds to process environmental review of the project, to hold necessary future public hearings and meet noticing requirements; and 692.37-acre territory is located within the City of Colusa Sphere of Influence and within the same County, and;

WHEREAS, a duly noticed public hearing on this resolution was held on January 21 2025 by the City Council of the City of Colusa; and

WHEREAS, the Council certifies that this direction is exempt from California Environmental Quality Act review pursuant to Section 15378.

NOW THEREFORE, THE CITY COUNCIL OF THE CITY OF COLUSA DOES HEREBY RESOLVE:

1. Recitals. That the foregoing recitals and findings are true and correct.
2. Authorization to City Manager. That City staff is hereby directed to prepare all such documents as may be required to facilitate the City Annexation and Land Swap.
3. Effective Date. This Resolution shall be effective immediately.

PASSED AND ADOPTED AT A REGULAR MEETING OF THE CITY COUNCIL OF THE CITY OF COLUSA ON THE __ DAY OF _____ 2025, BY THE FOLLOWING VOTE:

AYES:

NOES:

ABSENT:

ABSTAIN:

RYAN CODORNIZ, MAYOR

ATTEST:

Shelly Kittle, City Clerk

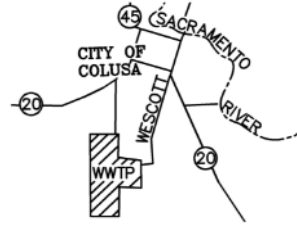
EXHIBITS

A: Annexation Exhibit

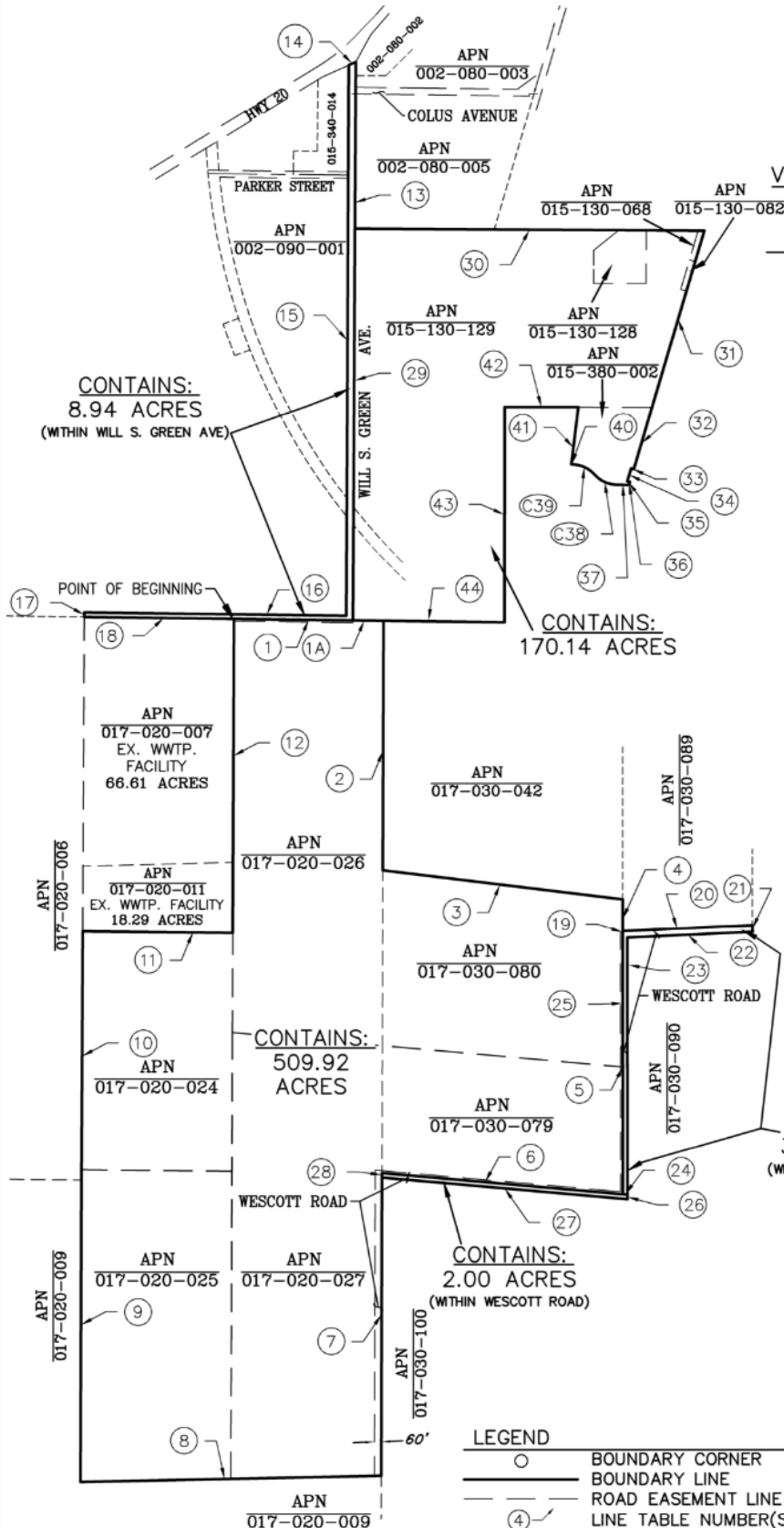
EXHIBIT A
ANNEXATION EXHIBIT

EXHIBIT A

CITY OF COLUSA WASTEWATER TREATMENT PLANT ANNEXATION MAP



VICINITY
NOT TO SCALE

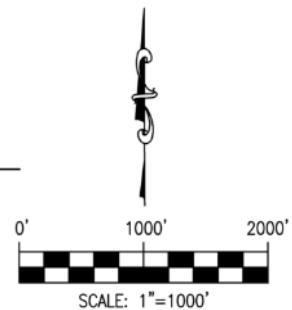


LINE & CURVE TABLE

1	S89° 15' 53"E	1050.51'
1A	S89° 15' 53"E	1319.80'
2	S00° 09' 22"W	2222.57'
3	S83° 01' 41"E	2131.29'
4	S00° 05' 25"E	302.22'
5	S00° 01' 22"E	2322.14'
6	N84° 56' 00"W	2132.61'
7	S00° 08' 31"W	2695.20'
8	S88° 48' 45"W	2653.44'
9	N00° 10' 51"E	2687.38'
10	N00° 17' 13"E	2213.94'
11	S89° 26' 23"E	1323.80'
12	N00° 12' 15"E	2796.09'
13	N00° 16' 09"E	4968.34'
14	S65° 51' 30"W	65.90'
15	S00° 16' 09"W	4900.62'
16	N89° 15' 53"W	2310.28'
17	S00° 17' 13"W	40.00'
18	S89° 15' 53"E	1319.80'
19	N00° 05' 25"W	20.00'
20	N87° 21' 23"E	1143.04'
21	S03° 50' 57"E	60.00'
22	S87° 21' 23"W	1100.04'
23	S00° 01' 22"E	2282.14'
24	N84° 56' 00"W	40.00'
25	N00° 01' 22"W	2322.14'
26	S00° 01' 22"E	40.00'
27	N84° 56' 00"W	2172.73'
28	N00° 08' 31"E	40.00'
29	N00° 16' 09"E	3484.39'
30	S89° 39' 51"E	3081.54'
31	S16° 21' 09"W	1635.48'
32	S16° 15' 48"W	573.73'
33	N73° 44' 12"W	25.00'
34	S16° 15' 48"W	119.66'
35	S73° 44' 12"E	25.00'
36	S28° 49' 05"W	27.46'
37	S89° 40' 35"W	100.00'
C38	$\Delta = 47^{\circ}55'58''$	R=270.00' L=225.88'
C39	$\Delta = 47^{\circ}55'58''$	R=270.00' L=225.88'
40	S89° 37' 03"E	4.67'
41	S06° 48' 33"W	512.25'
42	N89° 57' 51"W	649.84'
43	S00° 02' 09"W	1914.92'
44	S89° 15' 53"W	1335.45'

LEGEND

- BOUNDARY CORNER
- BOUNDARY LINE
- ROAD EASEMENT LINE
- LINE TABLE NUMBER(S)
- INTERIOR LOT LINE
- ASSESSOR'S LOT LINE



NOTE: FOR ASSESSMENT PURPOSES ONLY.