

THIS MAP SHOULD BE USED FOR REFERENCE PURPOSES ONLY. NO LIABILITY IS ASSUMED FOR THE ACCURACY OF THE DATA SHOWN. PARCELS MAY NOT COMPLY WITH LOCAL SUBDIVISION OR BUILDING ORDINANCES.

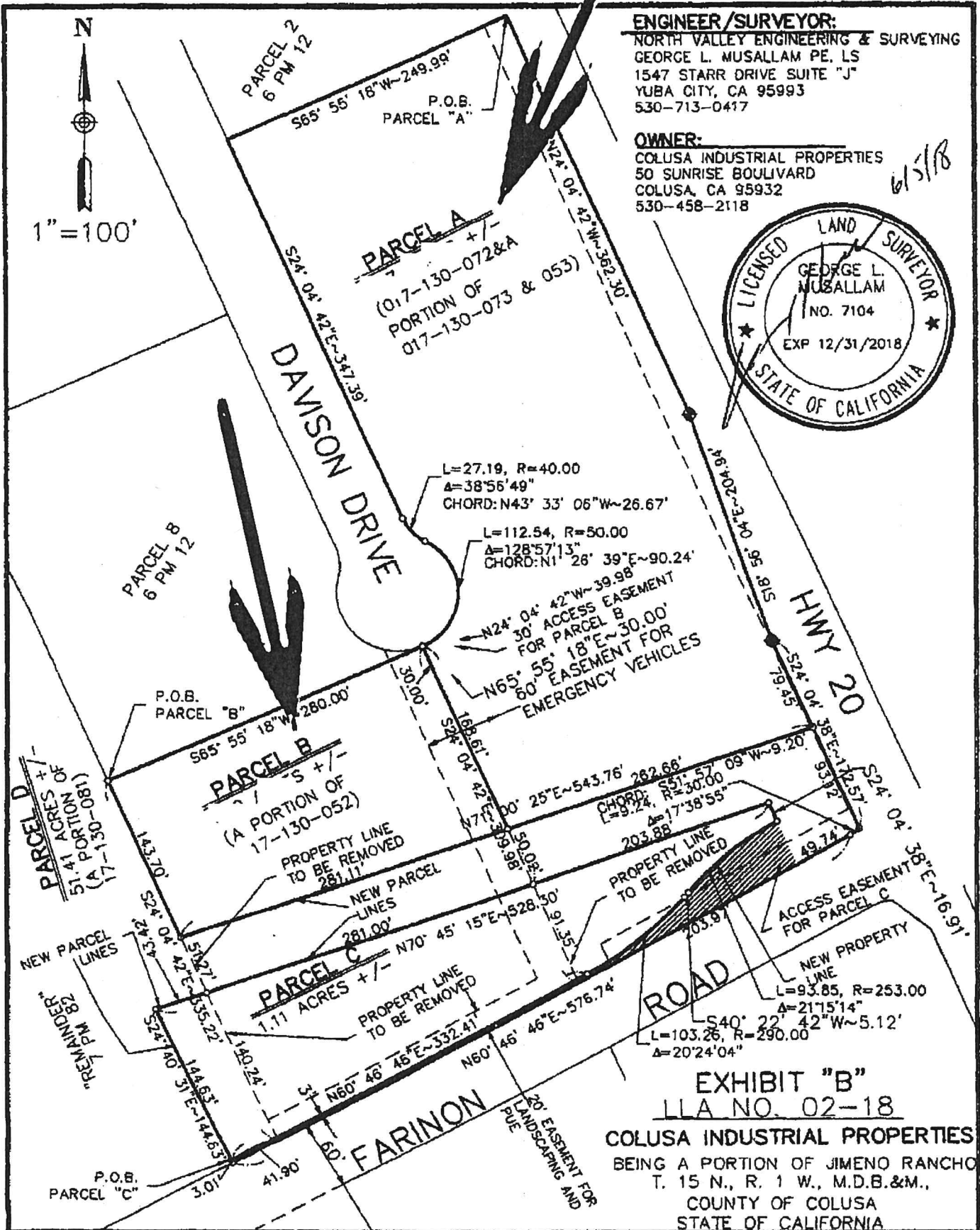


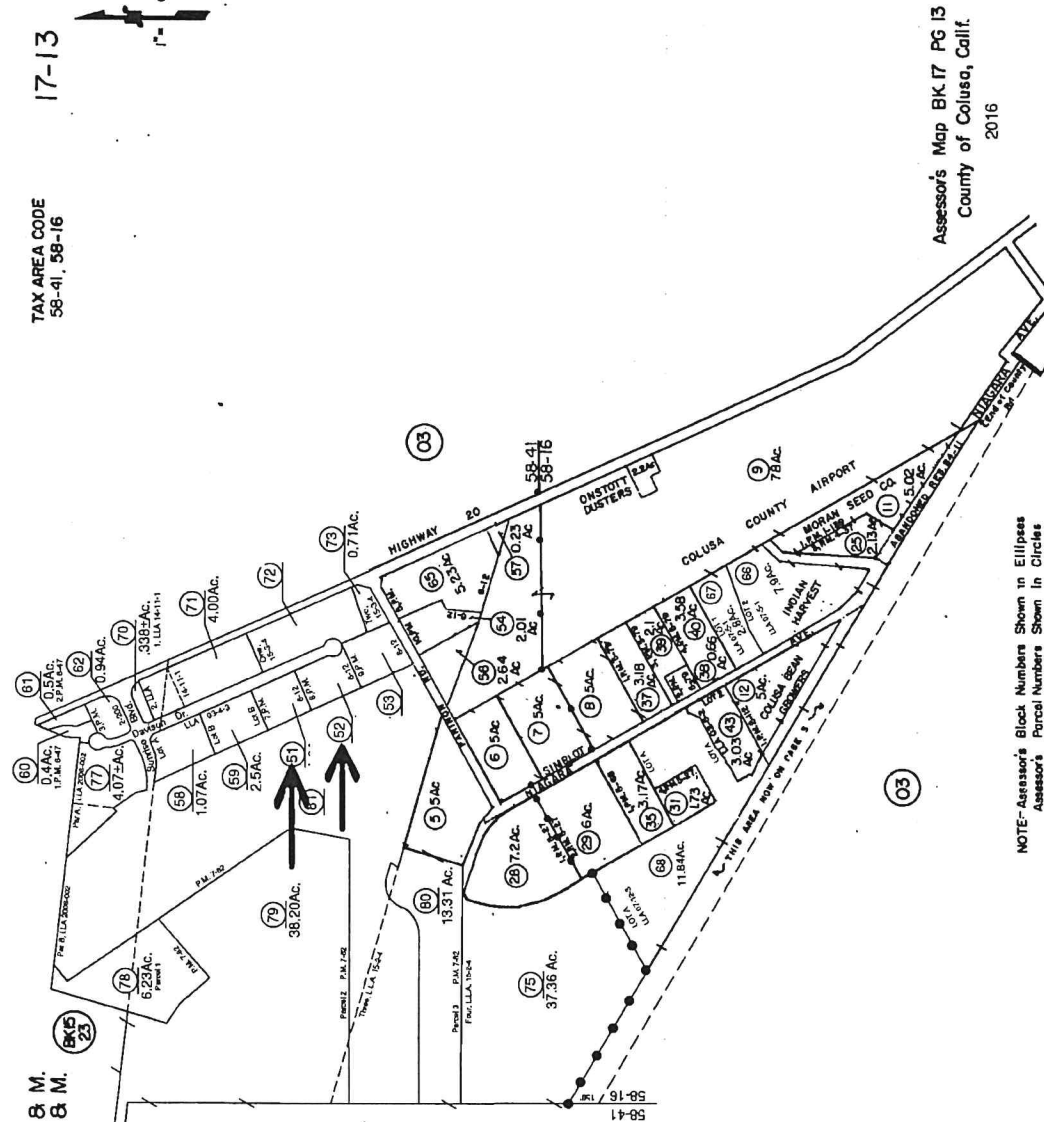
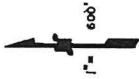
EXHIBIT "B"  
 LLA NO. 02-18

COLUSA INDUSTRIAL PROPERTIES  
 BEING A PORTION OF JIMENO RANCHO  
 T. 15 N., R. 1 W., M.D.B.&M.,  
 COUNTY OF COLUSA  
 STATE OF CALIFORNIA

THIS MAP SHOULD BE USED FOR REFERENCE PURPOSES ONLY. NO LIABILITY IS ASSUMED FOR THE ACCURACY OF THE DATA SHOWN. PARCELS MAY NOT COMPLY WITH LOCAL SUBDIVISION OR BUILDING ORDINANCES.

17-13

TAX AREA CODE  
58-41, 58-16



Assessor's Map BK 17 PG 13  
County of Colusa, Calif.  
2016

T. 15 N., R. 1 W., M. D. B. 8 M.  
T. 16 N., R. 1 W., M. D. B. 8 M.

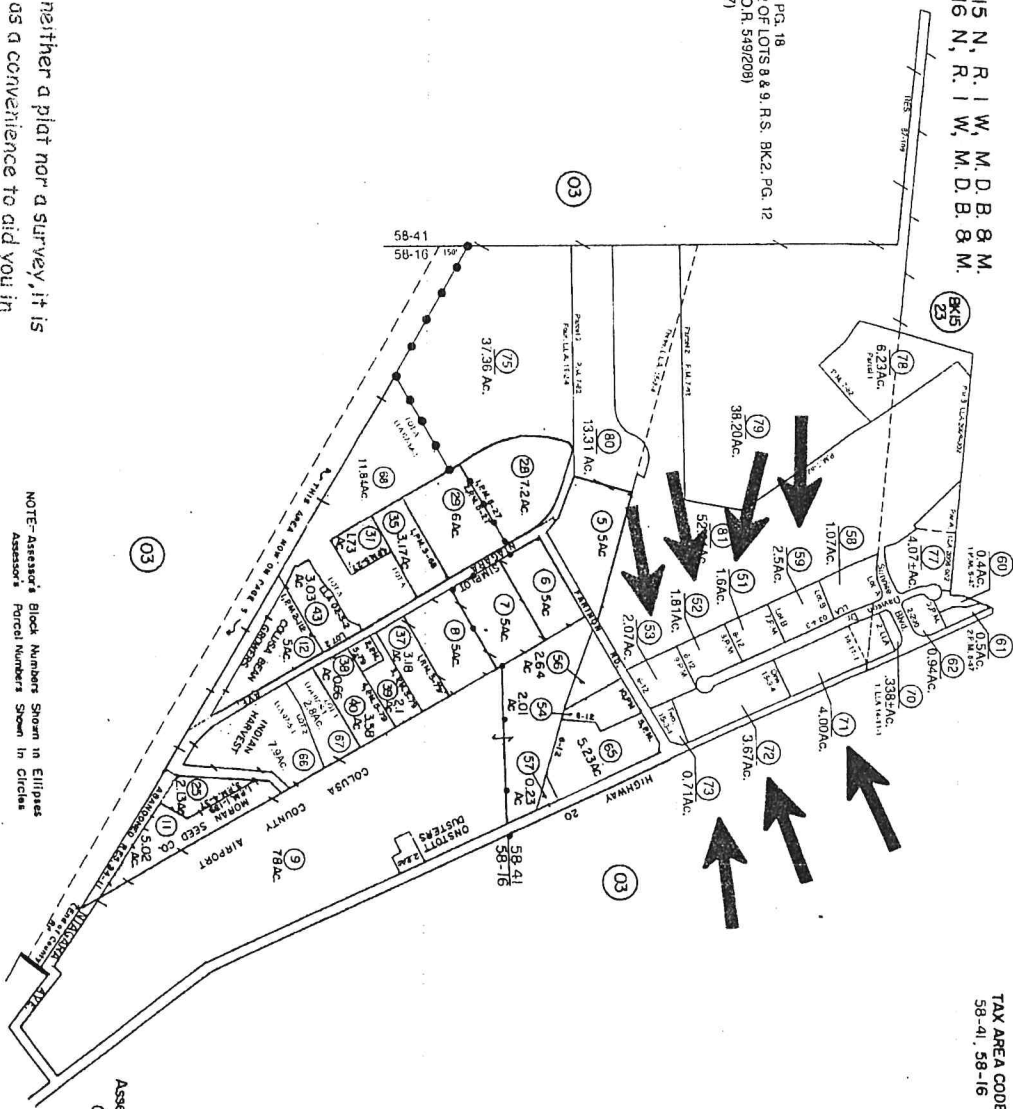
- JIMENO RANCHO, R.M. BK. 1, PG. 18
- JOHN C. MOGK SUBDN NO. 2 OF LOTS 8 & 9, R.S. BK.2, PG. 12
- ABANDONMENT RES. 84-11 (O.R. 549/208)
- RES. 87-109 (LLA O.R. 801/207)
- LLA 02-5-2 (2002-2816)
- LLA 03-4-3 (2003-2741)
- LLA 07-5-1 (2007-5575)
- LLA 07-12-3 (2011-25398)
- LLA 10-11-1 (2014-37551)
- P.M. BK. 1, PG. 139
- P.M. BK. 2, PG. 60
- P.M. BK. 2, PG. 112
- P.M. BK. 2, PG. 180
- P.M. BK. 2, PG. 200
- P.M. BK. 2, PG. 68
- P.M. BK. 4, PG. 20
- P.M. BK. 4, PG. 37
- P.M. BK. 5, PG. 27
- P.M. BK. 5, PG. 66
- P.M. BK. 5, PG. 79
- P.M. BK. 7, PG. 82
- LLA 15-3-4 (2015-1653)
- LLA 15-2-4 (2015-2704)
- LLA 2005-002 (2016-2806)
- P.M. BK. 7 PG. 82

NOTE- Assessor's Block Numbers Shown in Ellipses  
Assessor's Parcel Numbers Shown in Circles

THE OFFICIAL RECORDS OF THE COUNTY OF COLUSA ARE MAINTAINED BY THE COUNTY CLERK'S OFFICE. THIS MAP IS A REPRODUCTION OF THE RECORDS.

T.15 N., R.1 W., M.D.B. 8 M.  
 T.16 N., R.1 W., M.D.B. 8 M.

JIMENO RANCHO, R.M. BK. 1, PG. 18  
 JOHN C. MOGK SUBDN NO. 2 OF LOTS 8 & 9, R.S. BK.2, PG. 12  
 ABANDONMENT RES. 94-11 (O.R. 549208)  
 RES. 87-108 (L.A.O.R. 801207)  
 LLA 02-5-4 (2002-2816)  
 LLA 03-4-3 (2003-2741)  
 LLA 07-5-1 (2007-5575)  
 LLA 07-12-3 (2011-2536)  
 LLA 14-11-1 (2014-3751)  
 P.M. BK. 1, PG. 139  
 P.M. BK. 2, PG. 112  
 P.M. BK. 2, PG. 60  
 P.M. BK. 2, PG. 160  
 P.M. BK. 2, PG. 200  
 P.M. BK. 3, PG. 98  
 P.M. BK. 4, PG. 20  
 P.M. BK. 4, PG. 37  
 P.M. BK. 5, PG. 27  
 P.M. BK. 5, PG. 66  
 P.M. BK. 6, PG. 12  
 P.M. BK. 7, PG. 82  
 LLA 15-3-4 (2015-1633)  
 LLA 15-2-4 (2015-2704)  
 LLA 2006-002 (2015-2908)  
 P.M. BK. 7, PG. 82



TAX AREA CODE  
 58-41, 58-16

17-13



**NOTICE...** This is neither a plat nor a survey, it is furnished merely as a convenience to aid you in locating the land indicated hereon with reference to streets and other land. No liability is assumed by reason of any reliance hereon.

NOTE- Assessor's Block Numbers Shown in Ellipses  
 Assessor's Parcel Numbers Shown in Circles

Assessor's Map BK 17 PG 13  
 County of Colusa, Calif.  
 2016