
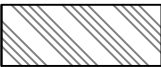
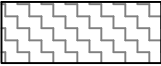
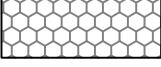


	ZONING	GENERAL PLAN
	O-S OPEN SPACE	PARKS RECREATION OPEN SPACE
	P-F PUBLIC FACILITIES DISTRICT	PUBLIC FACILITY
	M-1 LIGHT INDUSTRIAL	INDUSTRY DISTRICT
	R-1 SINGLE FAMILY RESIDENTIAL DISTRICT	LOW DENSITY RESIDENTIAL

— — — — — PROPERTY SUBJECT TO REZONE & GP AMENDMENT

**OWNER:**  
 BLUE HERON RIDGE INC.  
 50 SUNRISE BLVD  
 COLUSA, CA 95932

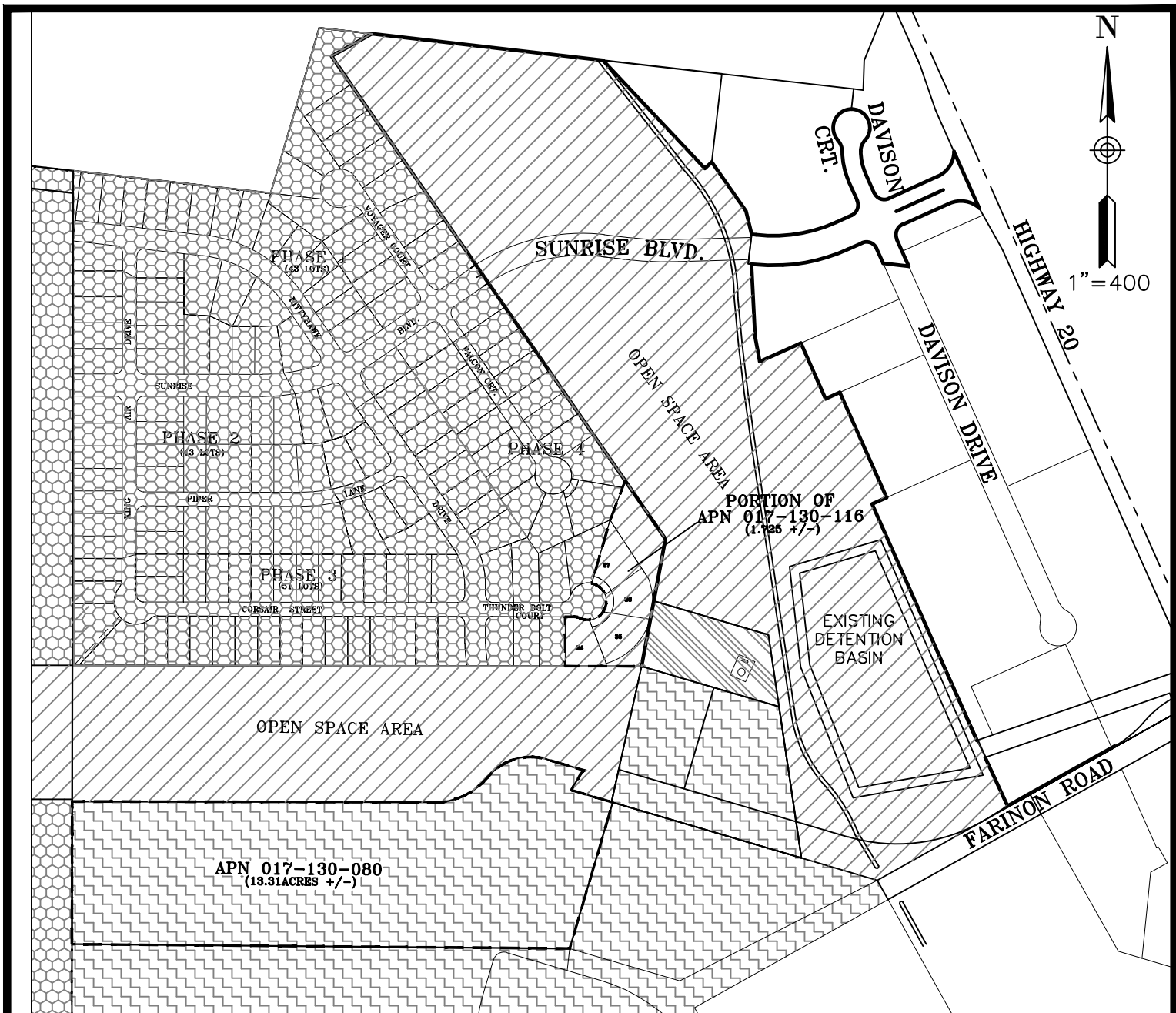
**ENGINEER/SURVEYOR:**  
 NORTH VALLEY ENGINEERING  
 AND SURVEYING  
 1547 STARR DRIVE SUITE "J"  
 YUBA CITY, CALIFORNIA 95993  
 (530) 713-0417


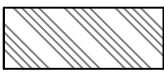
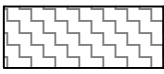
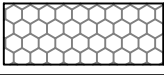
**ASSESSOR'S PARCEL NUMBER:**  
 APN: 017-130-106

**LOT ACREAGE:**  
 PARCEL ACREAGE AS SHOWN.

PREPARED BY:  
**NVES**  
 NORTH VALLEY ENGINEERING AND SURVEYING  
 1547 STARR DRIVE SUITE "J"  
 YUBA CITY, CA 95993  
 (530) 713-0417

EXHIBIT "B"  
**EXISTING ZONING & GP**  
 BLUE HERON RIDGE INC.



	ZONING	GENERAL PLAN
	O-S OPEN SPACE	PARKS RECREATION OPEN SPACE
	P-F PUBLIC FACILITIES DISTRICT	PUBLIC FACILITY
	M-1 LIGHT INDUSTRIAL	INDUSTRY DISTRICT
	R-1 SINGLE FAMILY RESIDENTIAL DISTRICT	LOW DENSITY RESIDENTIAL

----- PROPERTY SUBJECT TO REZONE & GP AMENDMENT

**OWNER:**

BLUE HERON RIDGE INC  
50 SUNRISE BLVD  
COLUSA, CA 95932

**ENGINEER/SURVEYOR:**

NORTH VALLEY ENGINEERING  
AND SURVEYING  
1547 STARR DRIVE SUITE "J"  
YUBA CITY, CALIFORNIA 95993  
(530) 713-0417

**ASSESSOR'S PARCEL NUMBER:**

APN: 017-130-106

**LOT ACREAGE:**

PARCEL ACREAGE AS SHOWN.

PREPARED BY:

**NVES**  
NORTH VALLEY ENGINEERING AND SURVEYING  
1547 STARR DRIVE SUITE "J"  
YUBA CITY, CA 95993  
(530) 713-0417

EXHIBIT "B"  
**PROPOSED ZONING & GP**

BLUE HERON RIDGE INC.