

MidTown Children's Bicycle Playground

A Community Collaboration of MidTown, Inc.

&

Columbus Consolidated Government



Dinglewood Park



Werocoda Creek

Dinglewood
Disc Golf Course



Dinglewood
Park



Warren Williams Rd

13th Street

Existing Site

Werocoda Creek

Werocoda Creek

Werocoda Creek



Dinglewood
Disc Golf Course

What is a Bicycle Playground?

The MidTown Children's Bicycle Playground will be a space that encourages exercise and activity specifically for children, filling a need in the city. It will be the first park of its kind in the entire region and a unique place to help children learn basic bicycle skills, fall in love with the sport, progress in their agility, and be able to take those learned skills with them to Standing Boy Trails and to the DragonFly Trails. The central location of the bike park makes it an ideal site to serve not just MidTown residents, but all of the city. The park will be positioned among city residents who are of diverse races and income levels, making it a prime example of inclusivity for our community.

What is a Bicycle Playground?

What it is

- A protected designated area for children and teenagers to learn the basic skills of bicycling and mountain biking
- Park will contain natural trails, bicycle obstacles and features, and “pump track”

What it isn't

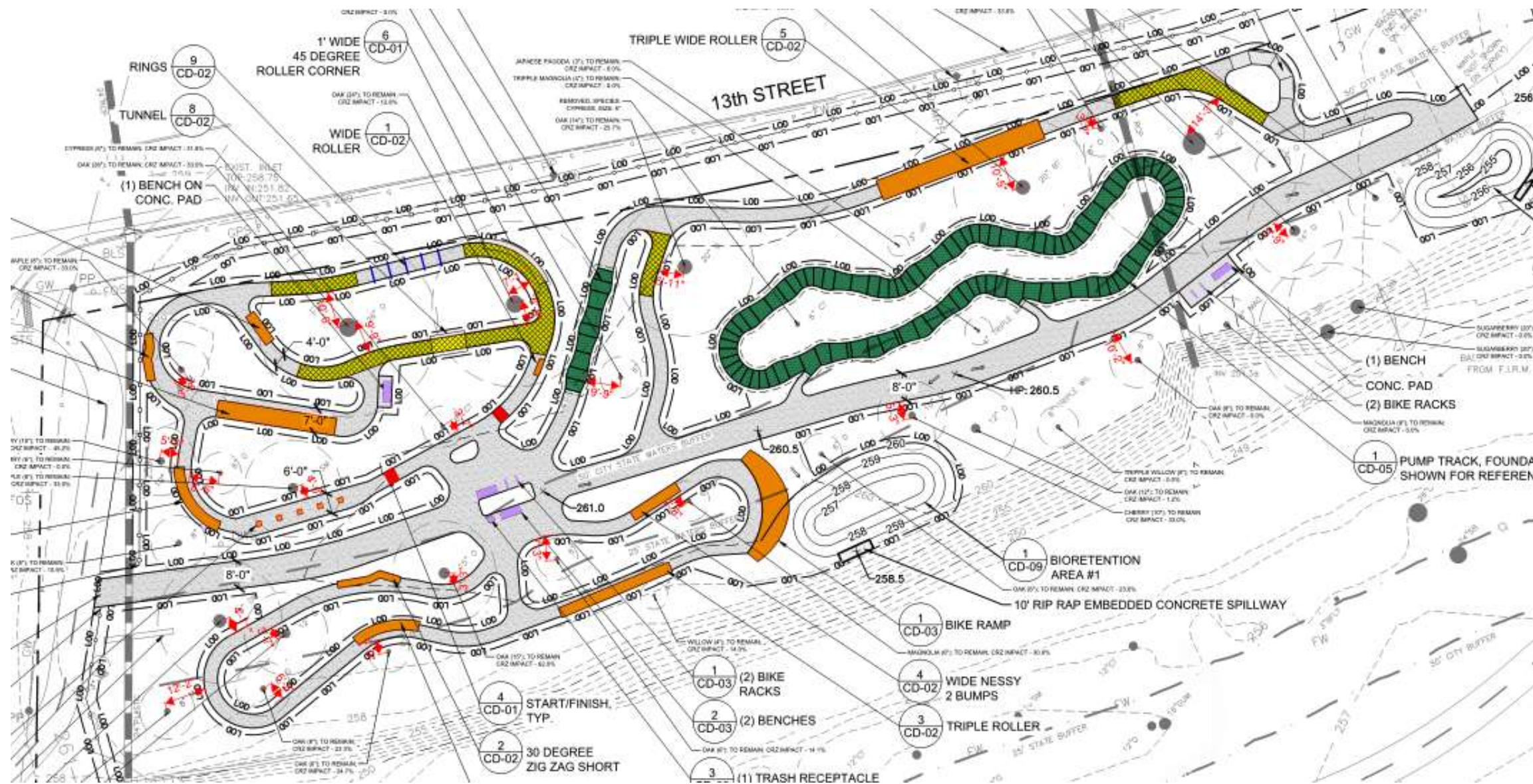
- BMX riding course
- Skateboarding park
- Traditional swings, slides, climbing features

Why Dinglewood Park?

- Other places were evaluated – Little Wildwood Park, Servant Leadership Playground (behind Columbus Public Library)
- Centrally located at the heart of MidTown
- Located next to future DragonFly connector
- Has available parking
- Highly visible and in close proximity to Lake Bottom Park
- Accessible to MidTown's diverse community

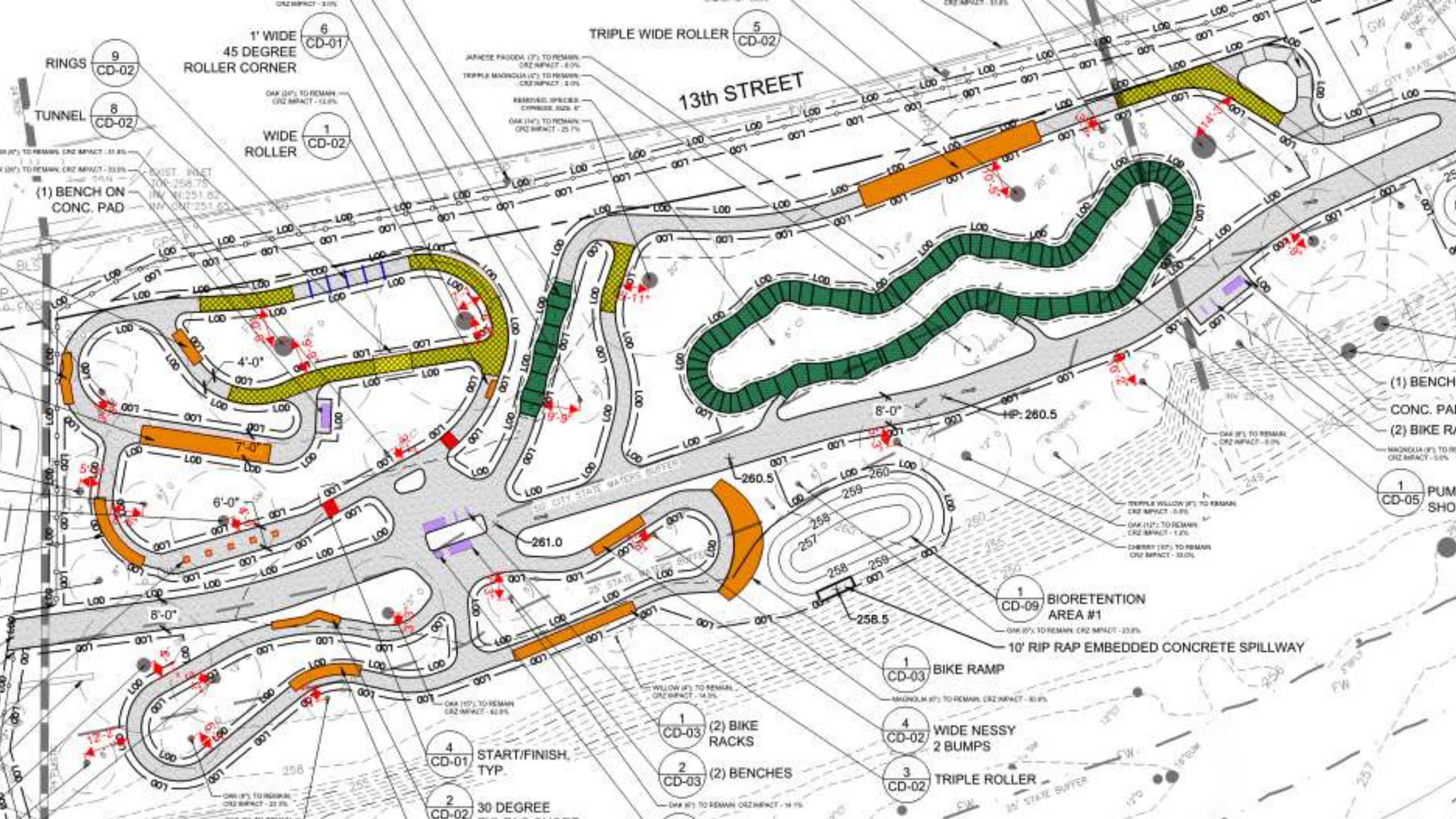
Partnership Details

- Collaboration between CCG Parks and Recreation and Midtown, Inc.
- Park was designed to retain all existing healthy trees
- Letter of Intent provided by CCG October 2024
- Equipment and trails fully funded and maintained by Midtown, Inc.
- Parks and Recreation will continue to maintain as a park
- Gift value - \$587,000











Obstacle Features









Project Status

- Drawings have been submitted for final permit review
- Design team has work closely with Engineering and Forestry
- Midtown has vendors and contractors ready to commence
- Prepared to finalize MOU with CCG to formally solidify partnership

A grayscale photograph of a BMX rider on a track, with the word "Questions" overlaid in the center. The rider is in a crouched position, leaning forward, and is positioned on a track that features several jumps and curves. The background shows a line of trees and a small structure, possibly a building or a shed. The overall scene is captured in a high-angle, wide shot, emphasizing the track's layout and the rider's position.

Questions