

Columbus Integrated Waste



We do amazing.

ACC

ATLANTIC COAST
CONSULTING, INC.

WILSON CAMP MSW LANDFILL
MUSCOGEE COUNTY, GEORGIA

LEGEND

- PROPERTY LINE
- - - APPROXIMATE WASTE MANAGEMENT BOUNDARY
- ◆ GROUNDWATER MONITORING WELL
- ◆ METHANE MONITORING LOCATION
- ▼ SURFACE WATER MONITORING LOCATION



200 100 0 200 400 600
SCALE (IN FEET)



ATLANTIC COAST
CONSULTING, INC.
WILSON CAMP LANDFILL
802 13th AVENUE
BUILDING E
COLUMBUS, GEORGIA 31907

SITE MAP

FIGURE
1



2018 LANDFILL REDEVELOPMENT AWARD

COLUMBUS CONSOLIDATED GOVERNMENT



OXBOW MEADOWS PARK REDEVELOPMENT OF THE WILSON CAMP MSWL



COLUMBUS CONSOLIDATED GOVERNMENT
PUBLIC WORKS
COLUMBUS, GEORGIA
POPULATION: 194,058
HOUSHOLDS: 83,921
COST FOR PROJECTS: \$190/HOUSEHOLD
APPROXIMATE BUDGET: \$16,000,000

MAKING LANDFILLS USEFUL

This closed landfill is being managed for community support facilities, parks and events.

For information and non-emergencies call 311 M - F 8 - 5, for emergencies call 911.

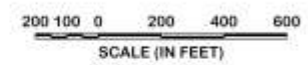




SCHATULGA ROAD SANITARY LANDFILL
MUSCOGEE COUNTY, GEORGIA

LEGEND

- PROPERTY LINE
- ◆ GROUNDWATER MONITORING WELL
- ▼ SURFACE WATER SAMPLING LOCATION
- ◆ METHANE MONITORING POINT

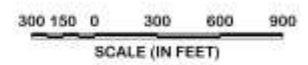


SCHATULGA ROAD SANITARY LANDFILL
7160 SACERDOTE LANE
COLUMBUS, GEORGIA 31907

PINE GROVE MSW LANDFILL
MUSCOGEE COUNTY, GEORGIA

LEGEND

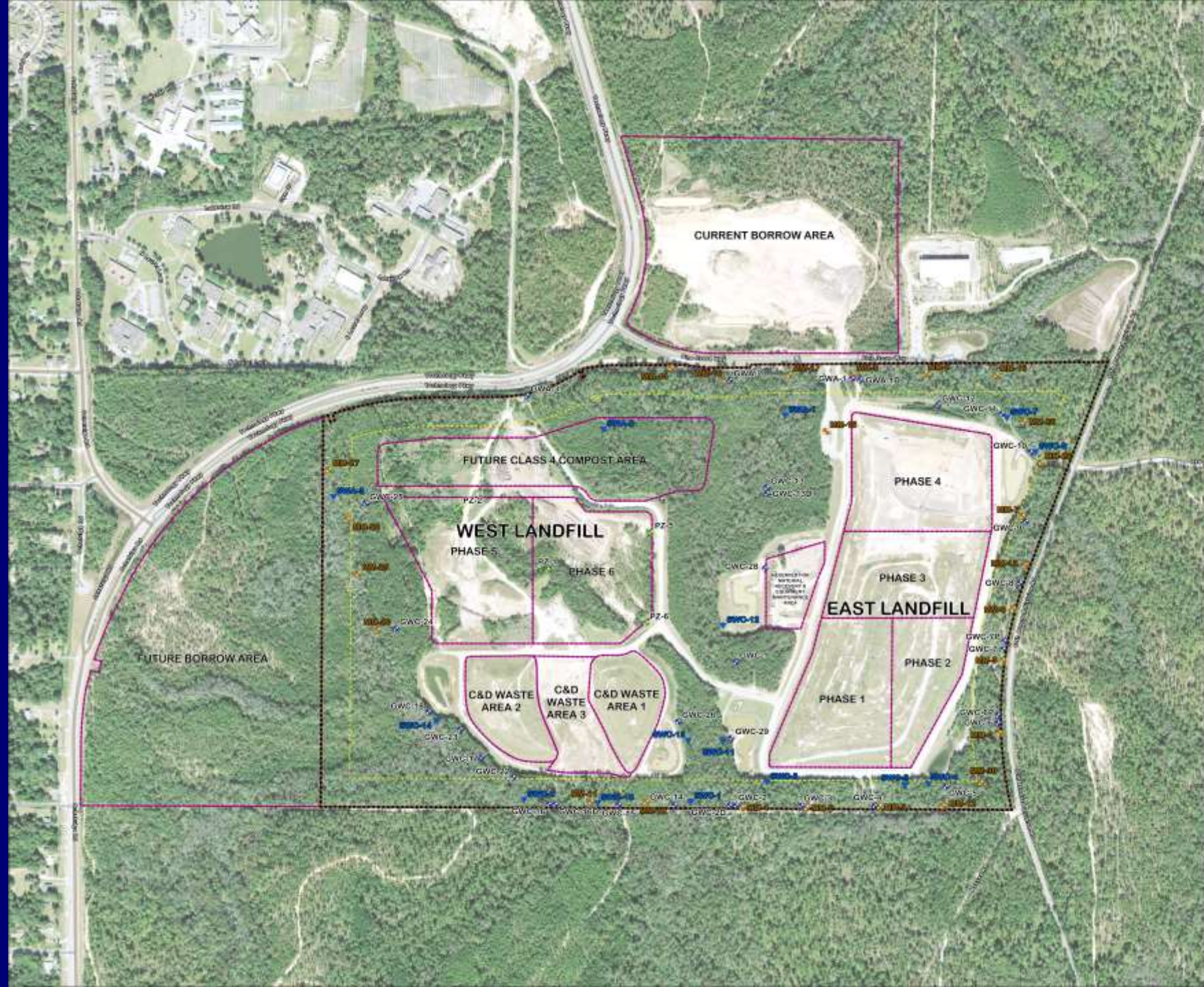
- PROPERTY BOUNDARY
- CELL BOUNDARY
- BUFFER
- ⊕ GROUNDWATER MONITORING WELL
- ⊕ PIEZOMETER
- ⊕ METHANE MONITORING WELL
- ▼ SURFACE WATER MONITORING POINT



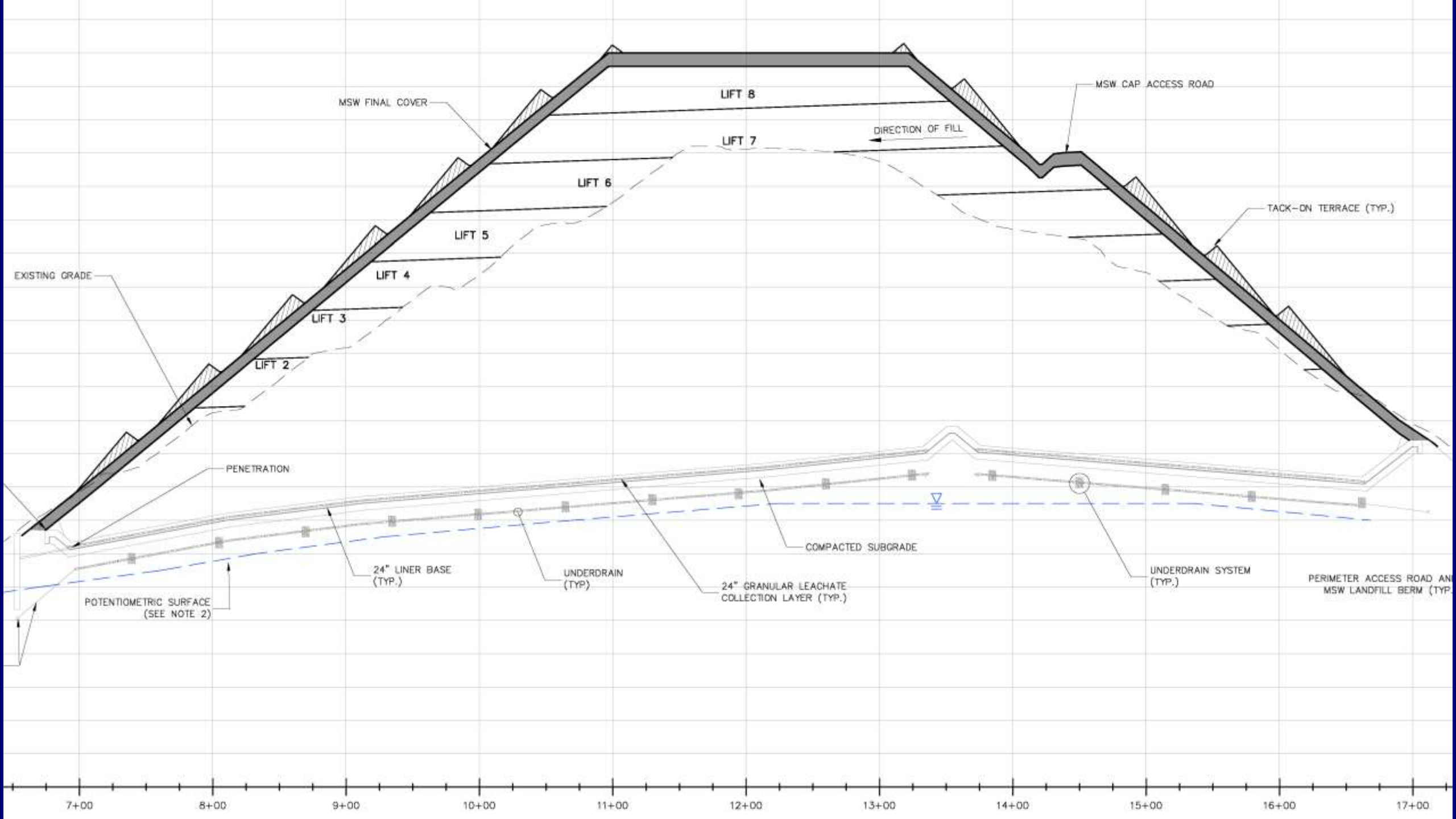
PINE GROVE LANDFILL
7900 PINE GROVE WAY
COLUMBUS, GEORGIA 31907

SITE MAP

FIGURE
1







2017 C&D Major Modification Horizontal & Vertical Expansion

- Increased airspace by ~ 1M CYs
- ~ **\$18M** worth of additional C&D airspace
- Current life expectancy ~ 29 years

Pending MSW Major Modification Vertical Expansion

- Will increase airspace by ~ 2.5M CYs
- Will bring in ~ **\$61M** from additional MSW airspace
- Life expectancy will be ~ 50 years (~ 25 more years)
- Class 4 compost area

Summary

- Active solid waste permits in compliance with rules
- C&D life expectancy increased from ~ 0 to 29 years
- MSW life expectancy will increase ~ 25 years
- Total value of airspace gain ~ **\$79M**
- Class 4 compost area

THANK YOU

