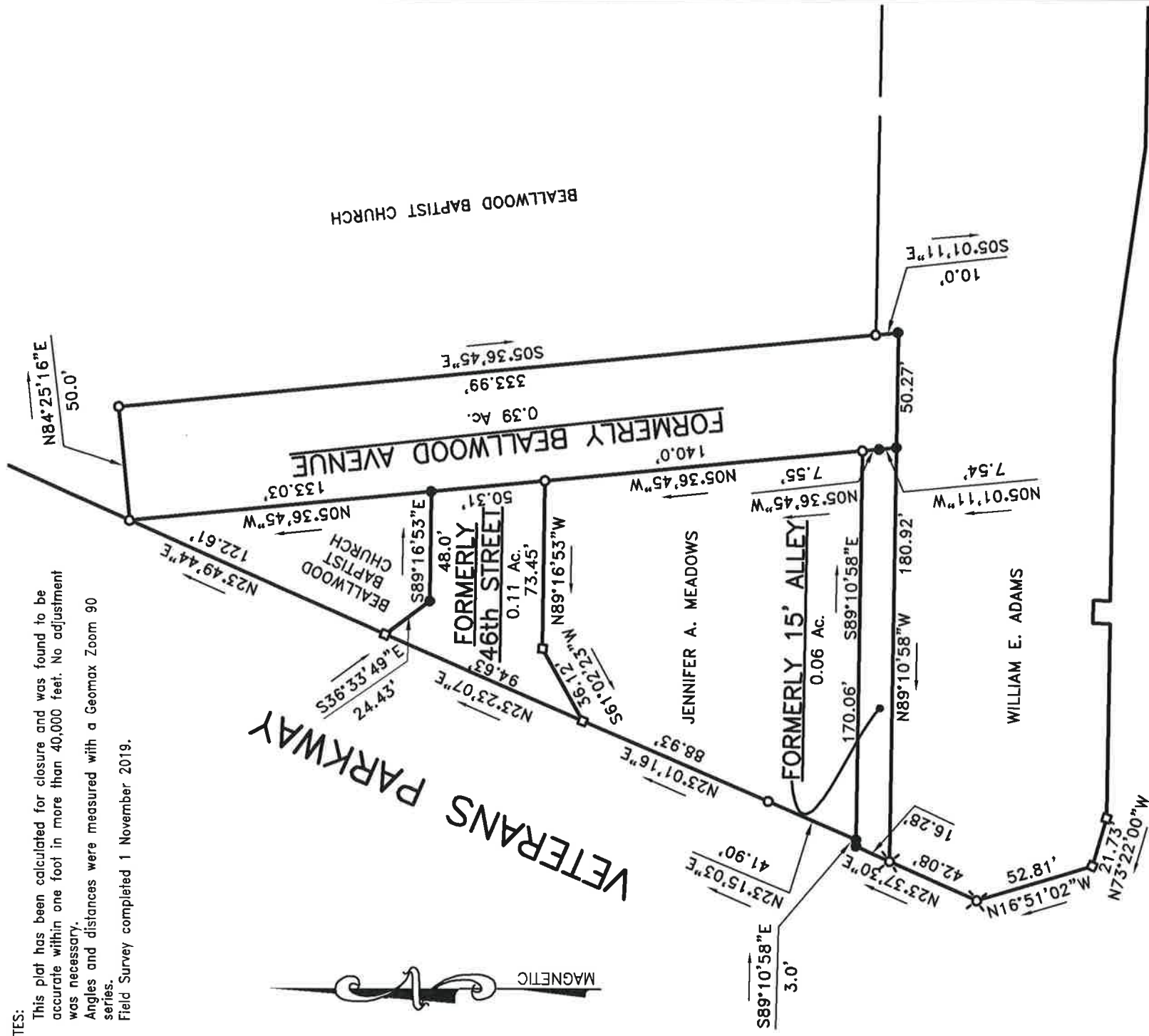


NOTES:

1. This plat has been calculated for closure and was found to be accurate within one foot in more than 40,000 feet. No adjustment was necessary.
2. Angles and distances were measured with a Geomax Zoom 90 series.
3. Field Survey completed 1 November 2019.



# MANCHESTER EXPRESSWAY

- LEGEND
- CONCRETE MONUMENT
  - REBAR FOUND
  - DRILL HOLE FOUND
  - REBAR & CAP FOUND (MMV LSF 87)



SCALE 1" = 60'

DATE: 24 January 2020



TO ALL PARTIES INTERESTED IN TITLE TO PREMISES SURVEYED:

This plat is a retracement of an existing parcel or parcels of land and does not subdivide or create a new parcel or make any changes to any real property boundaries. The recording information of the documents, maps, plats, or other instruments which created the parcel or parcels are stated hereon. RECORDATION OF THIS PLAT DOES NOT IMPLY APPROVAL OF ANY LOCAL JURISDICTION, AVAILABILITY OF PERMITS, COMPLIANCE WITH LOCAL REGULATIONS OR REQUIREMENTS, OR SUITABILITY FOR ANY USE OR PURPOSE OF THE LAND. Furthermore, the undersigned land surveyor certifies that this plat complies with the minimum technical standards for property surveys in Georgia as set forth in the rules and regulations of the Georgia Board of Registration for Professional Engineers and Land Surveyors and as set forth in O.C.G.A. Section 5-6-67.

*Jefferson W. Keefe*  
 JEFFERSON W. KEEFE, R. L. S., Georgia Reg. No. 2787

Survey of Part of

Former Beallwood Avenue,  
 46th Street and 15' Alley  
 Part of Hamilton Heights  
 Columbus, Muscogee County, Georgia