

City Council Meeting
April 9, 2024

Judicial Center Update



Concept Only; Subject to Change

Judicial Center Update

- Since last update, additional departments have moved out of the Wings including Juvenile Court, Accountability Court, parts of the District Attorney's Office, parts of the Solicitor General's Office, and Court Reporters.
- Components of the Sheriff's Office are the only remaining tenants in the Wings.
- Work continues on the early demolition package which was approved by Council on 12/05/2023. Major work activities currently in progress include selective demolition of the underground parking deck and mass excavation.
- Amendment #17 on the agenda for approval today includes deep foundations, concrete structure, exterior skin, mechanical, electrical, fire suppression, fire alarm, security, audio visual, and plumbing systems, and elevators. Assuming approval of this package, foundation work would start in May.

Judicial
Center
Progress
Photos



Judicial
Center
Progress
Photos



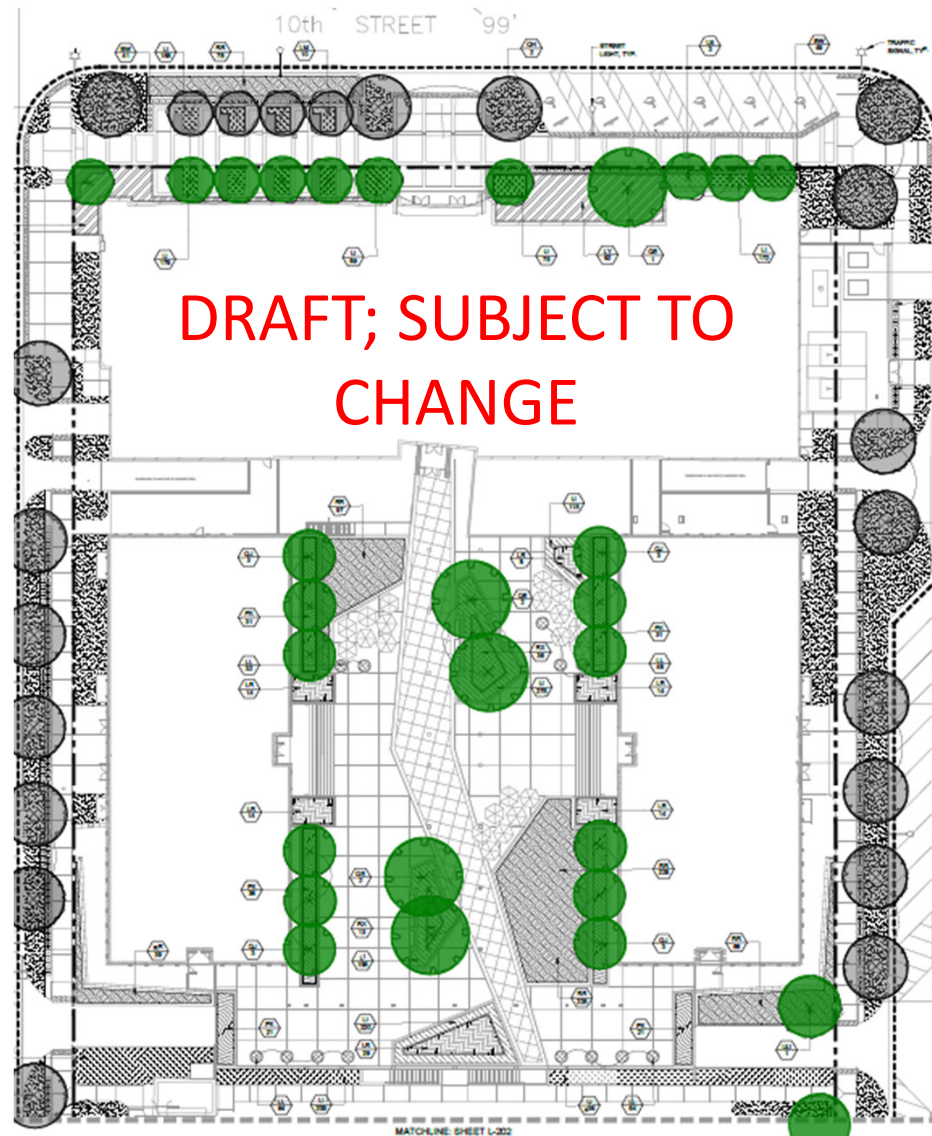
Judicial
Center
Progress
Photos



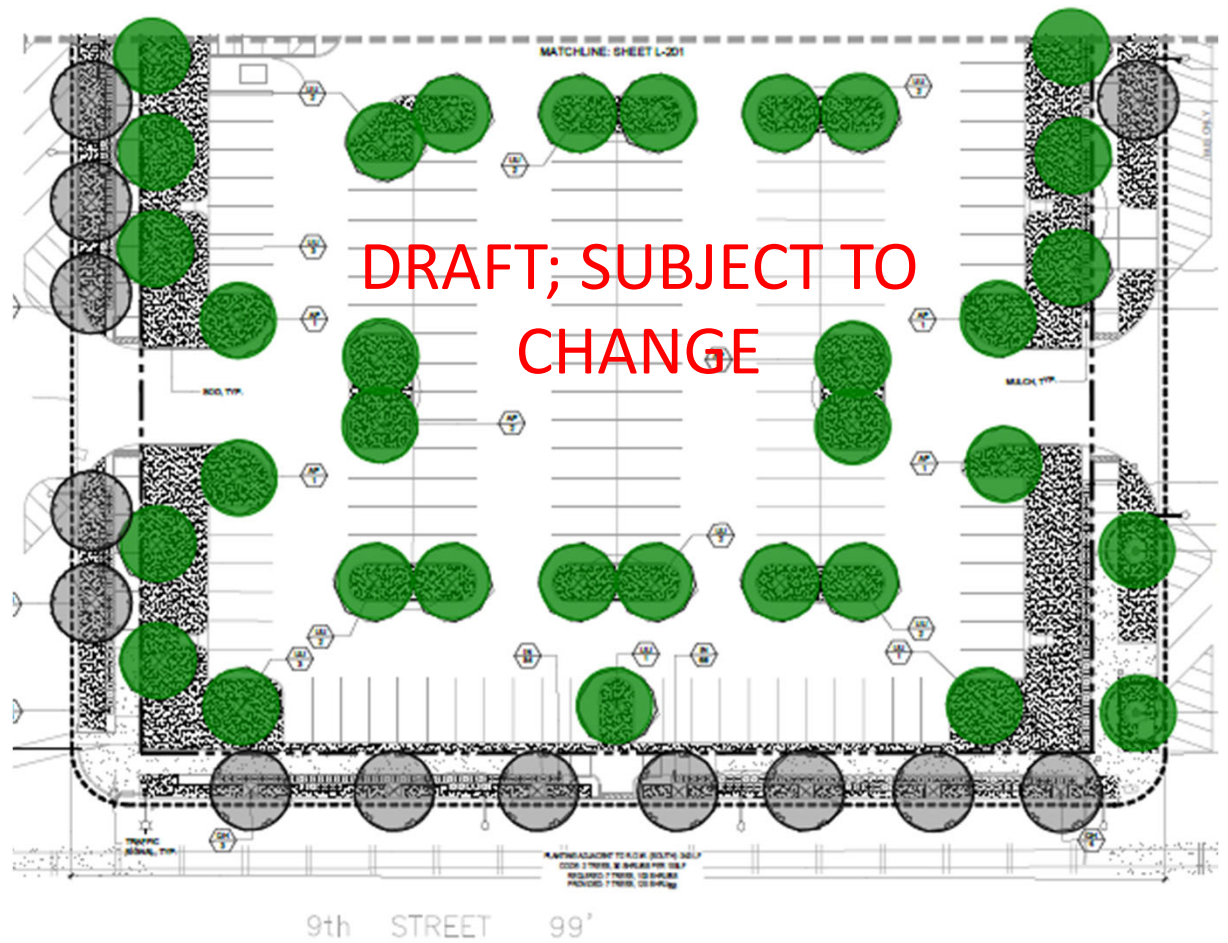
Judicial Center Tree Update

- 43 total trees are to be demolished from the existing site and adjacent right of way. Two trees from the existing site have been relocated to other City property per direction from the City Arborist. Two existing trees on right of way on the southeast corner of the site will be maintained.
- Current plans call for 60 trees to be planted inside the property lines and an additional 35 trees to be planted on City right of way adjacent to the project. Along with the two existing trees to remain, this represents an increase of 225% over the current number of trees on this site.

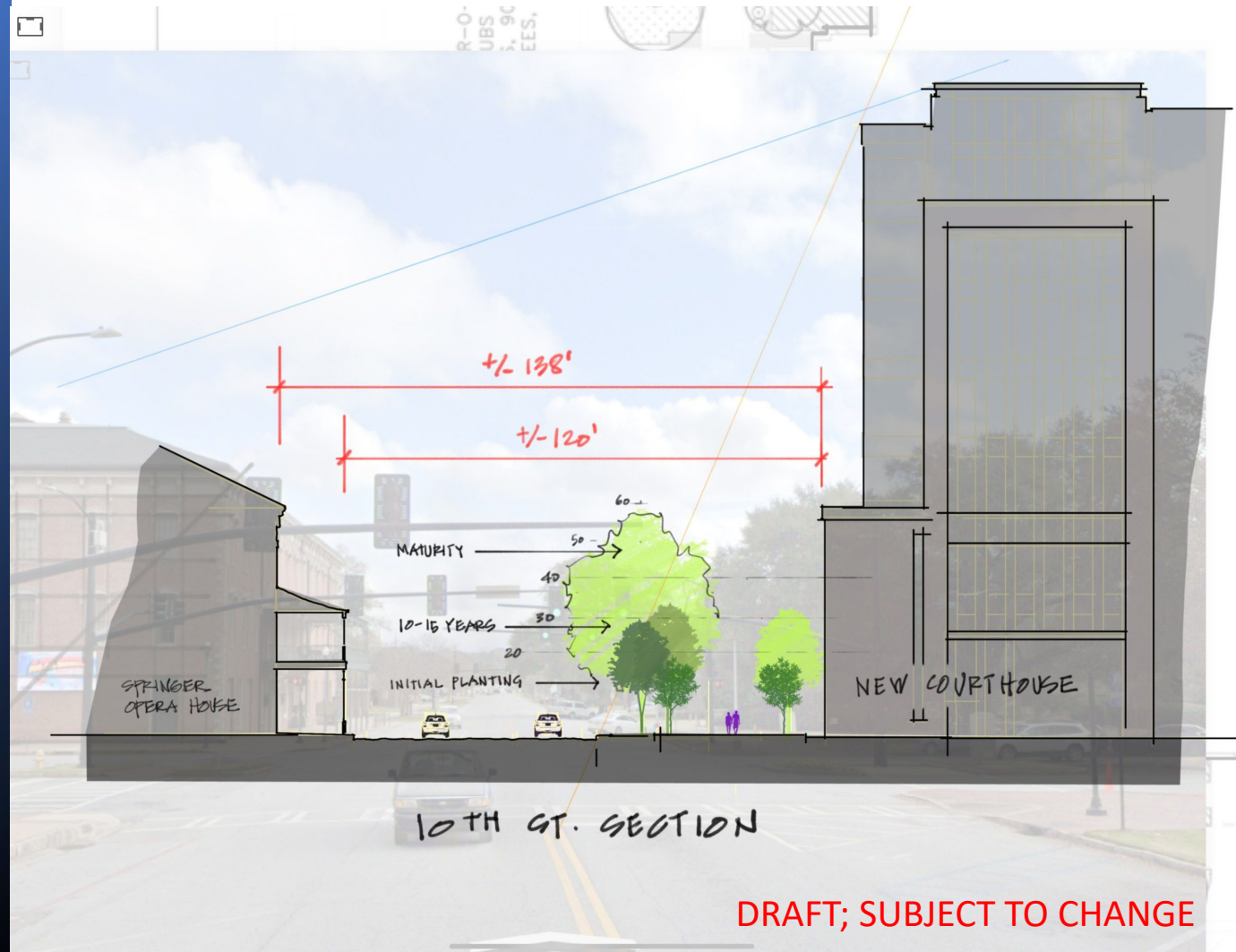
Judicial Center Tree Update



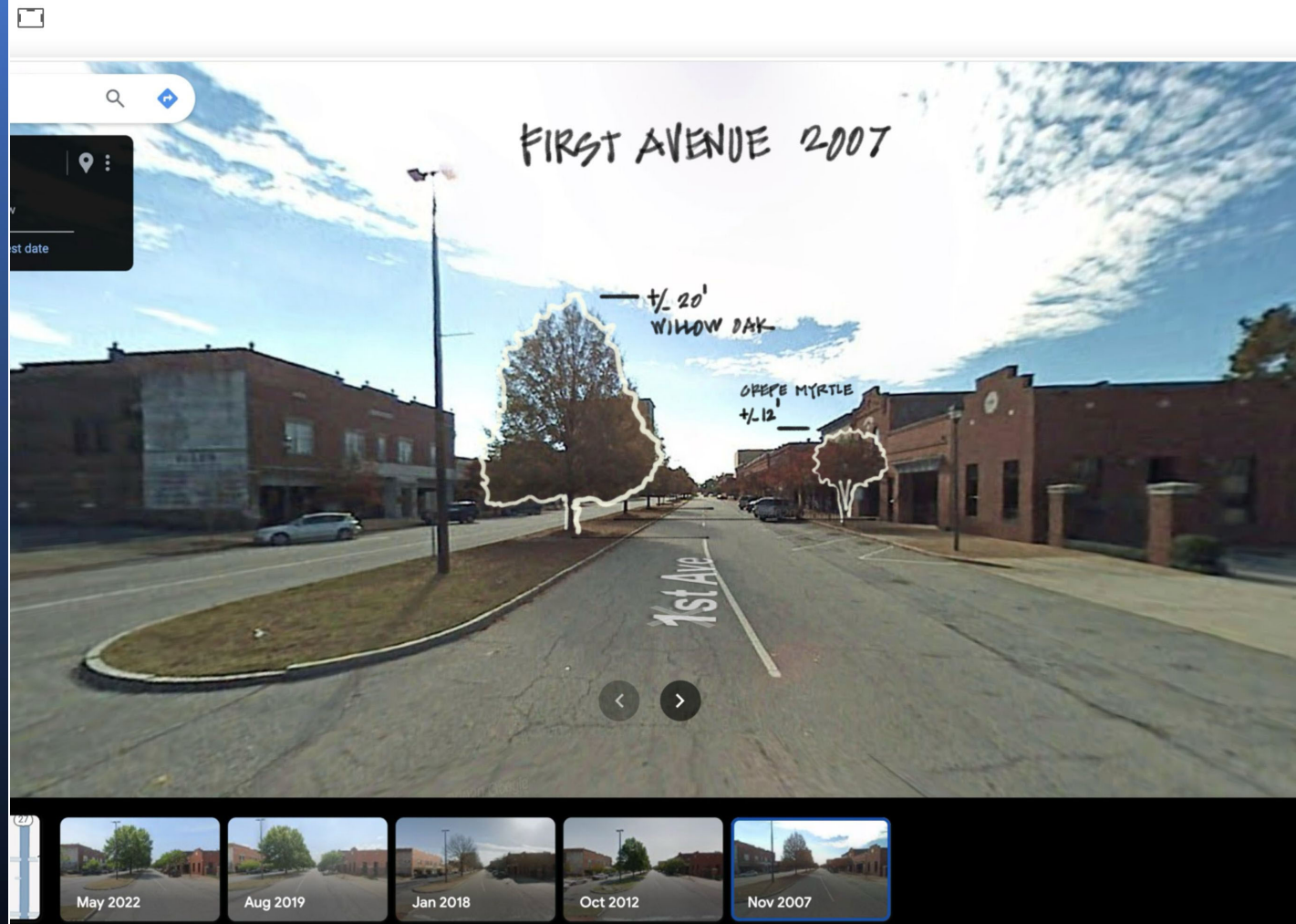
Judicial Center Tree Update



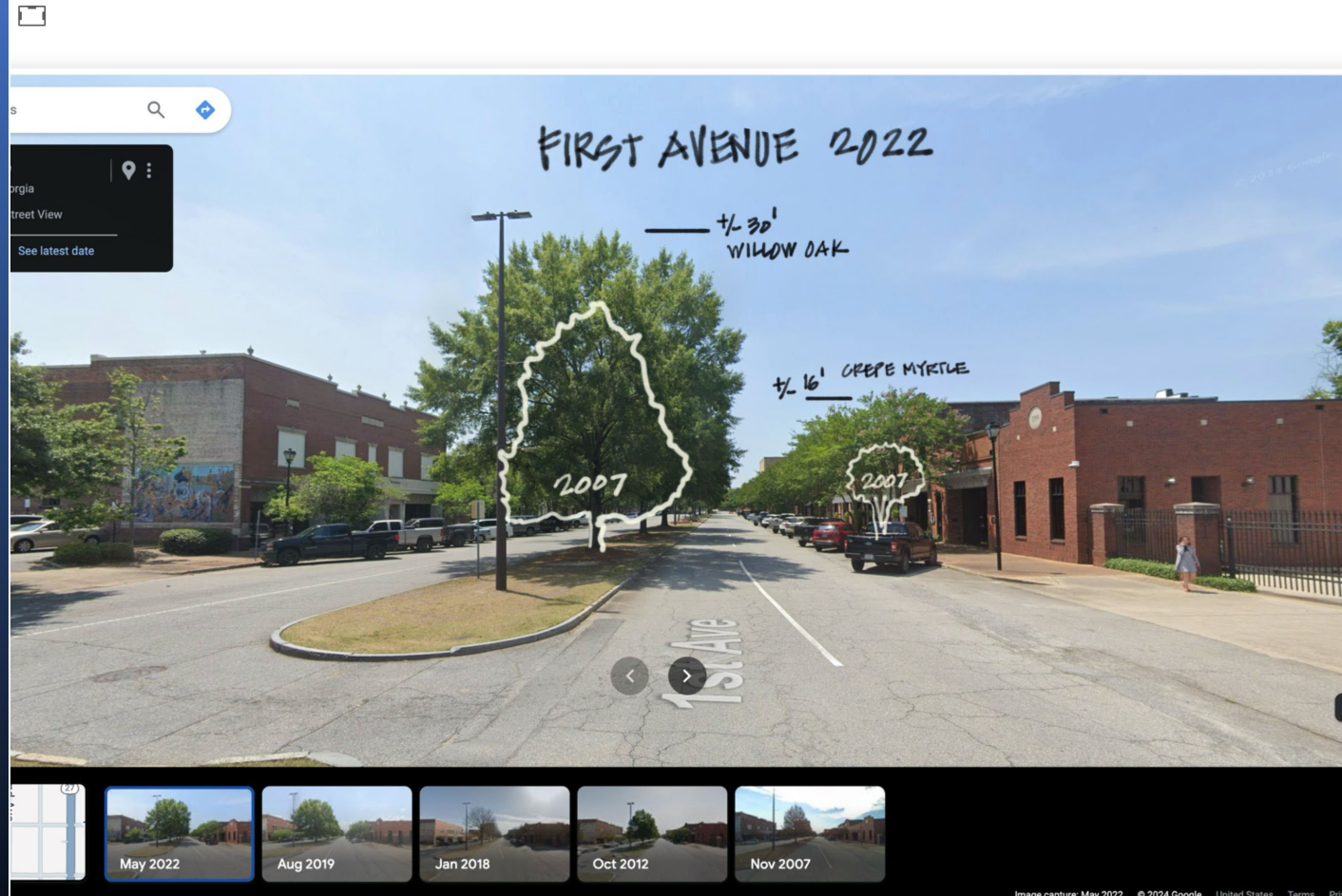
Judicial Center Tree Update



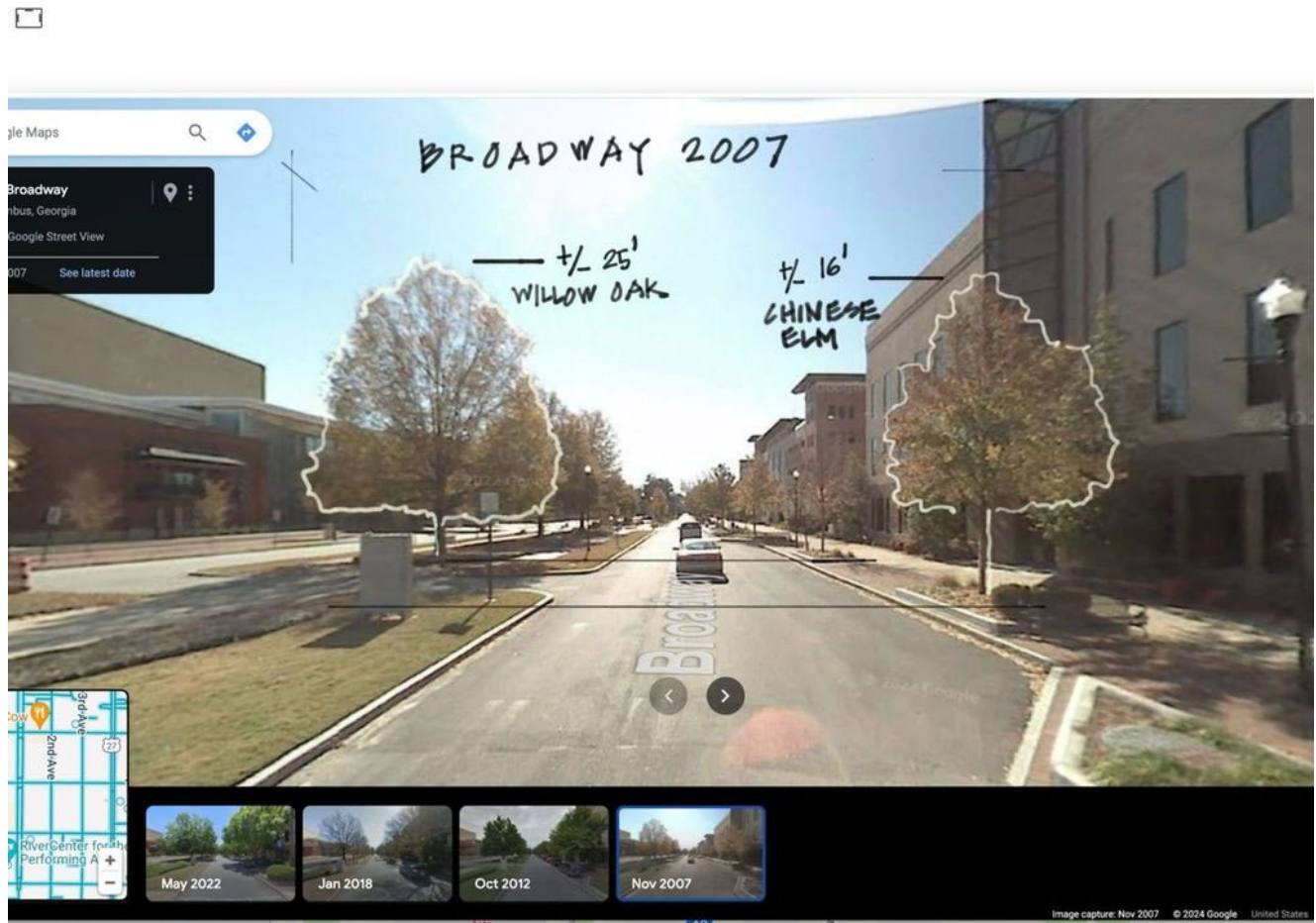
Judicial Center Tree Update



Judicial Center Tree Update



Judicial Center Tree Update



Judicial Center Tree Update



Judicial Center Tree Update



Judicial Center Tree Update



QUESTIONS