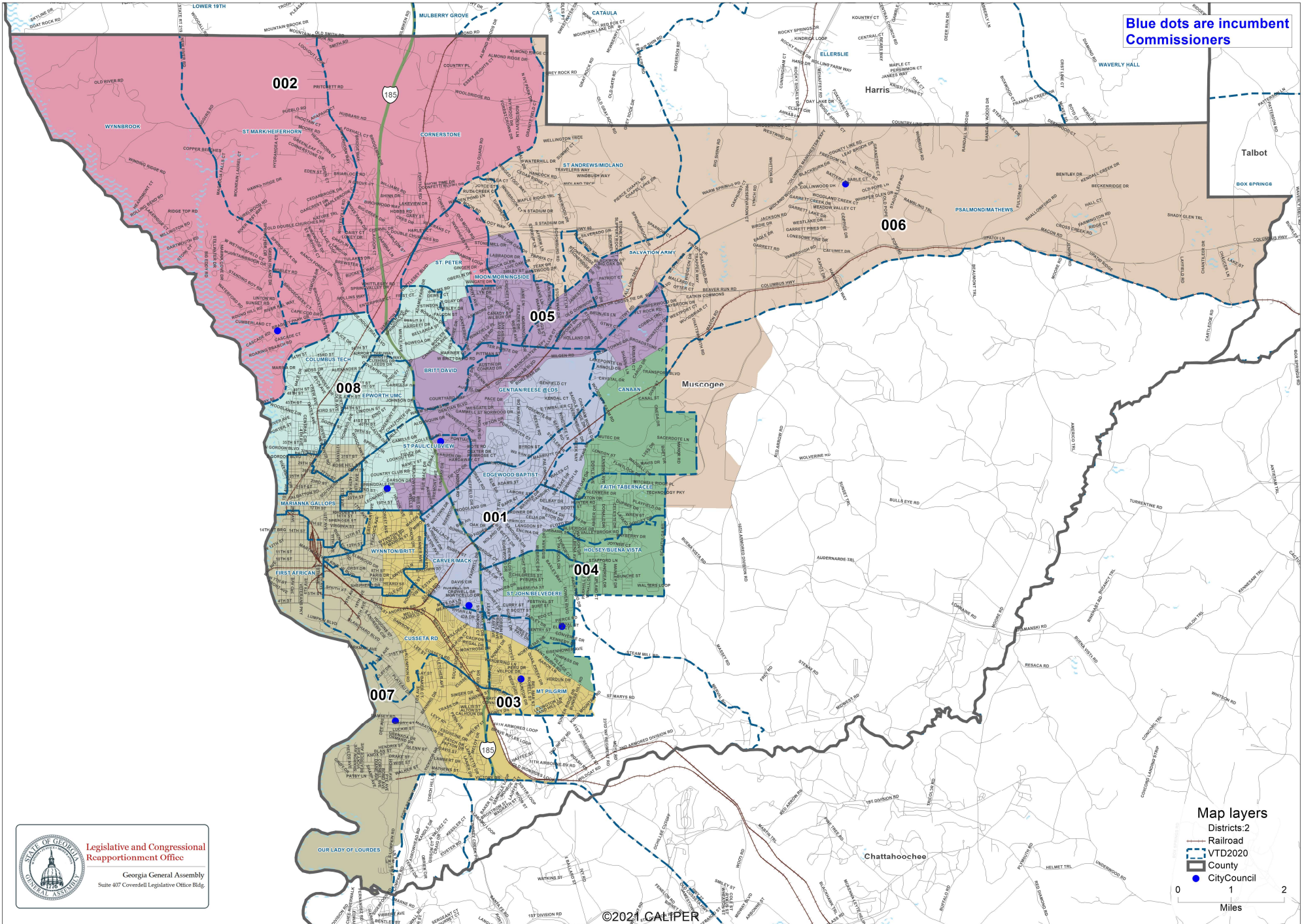


# Draft 3- Muscogee County Commission Districts

Client: Muscogee  
 Plan: muscogecc-draft3-2022  
 Type: Local



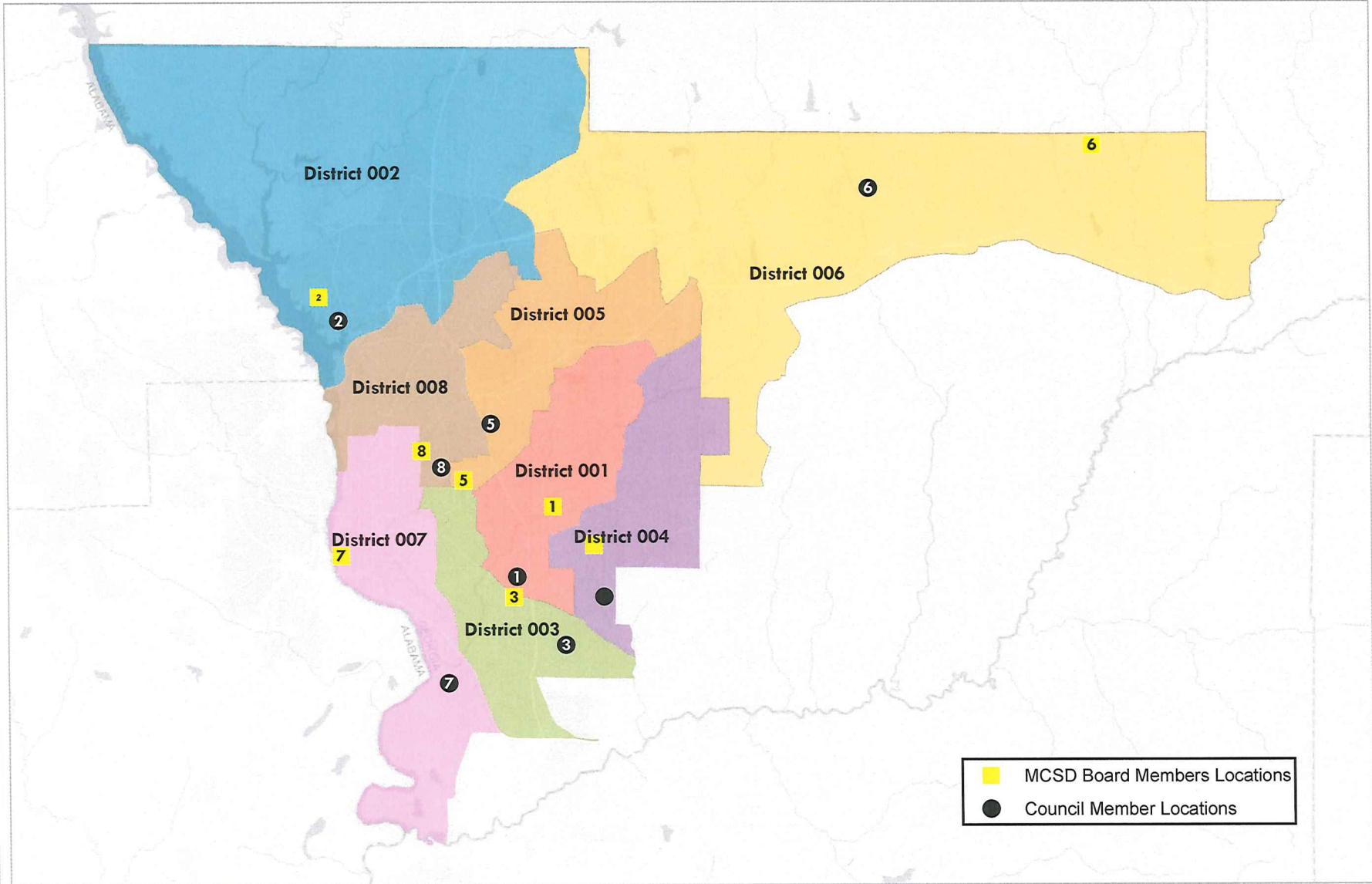
**Legislative and Congressional Reapportionment Office**  
 Georgia General Assembly  
 Suite 407 Covedell Legislative Office Bldg.

**Map layers**  
 Districts:2  
 Railroad  
 VTD2020  
 County  
 City Council

0 1 2  
 Miles

### Redistricting 2021 | State Recommendations

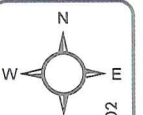
This material is made available as a public service. Maps and data are to be used for reference purposes only. The data contained is subject to constant change. Map information is believed to be correct but is not guaranteed.



- MCSD Board Members Locations
- Council Member Locations



Planning Department  
Date: 2/3/2022



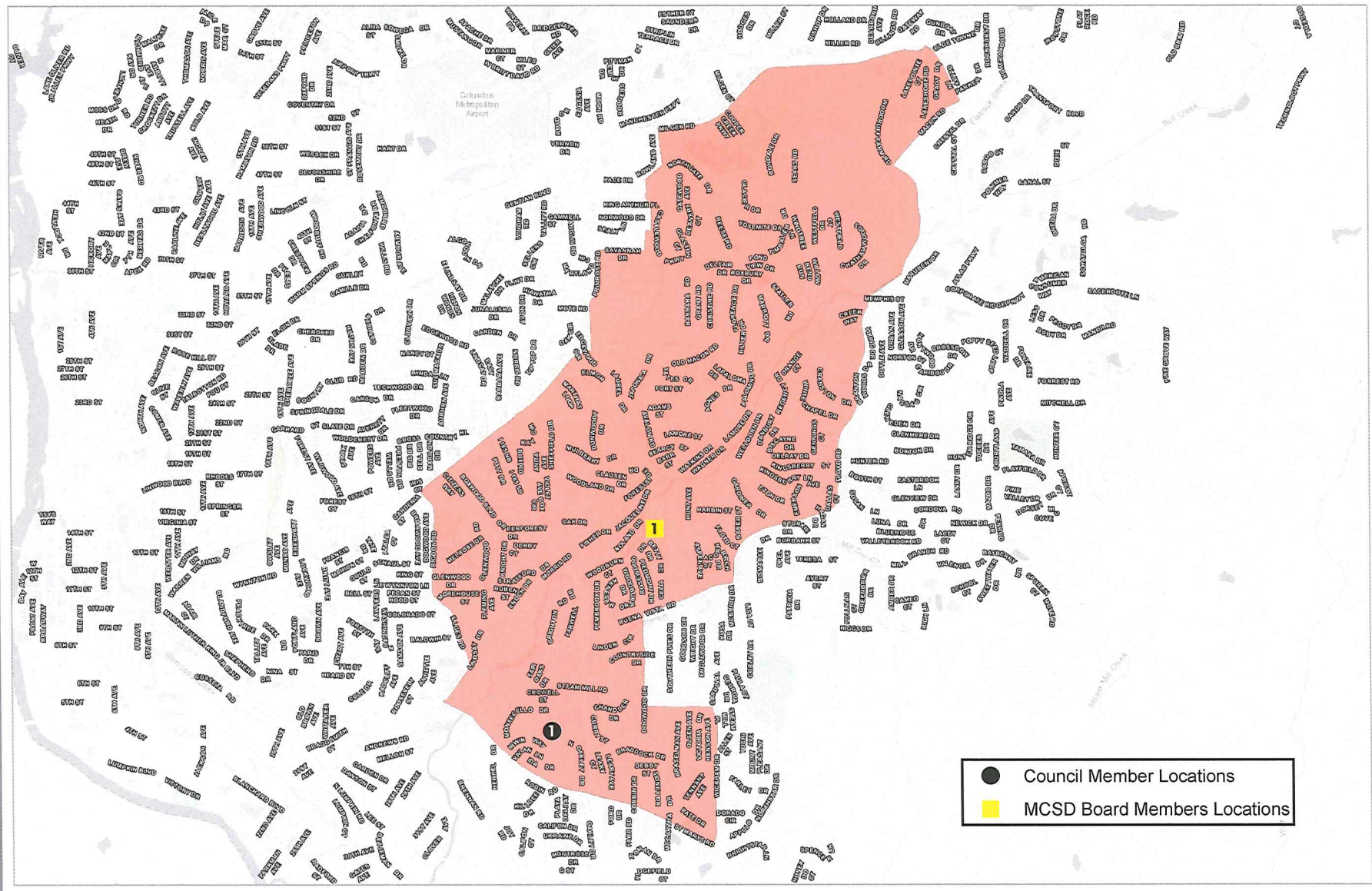
Not to Scale  
Projection: NAD 83  
Datum: State Plane GA West 1002



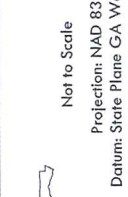
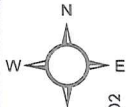


### Redistricting 2021 | State Recommendations | District 1

This material is made available as a public service. Maps and data are to be used for reference purposes only. The data contained is subject to constant change. Map information is believed to be correct but is not guaranteed.



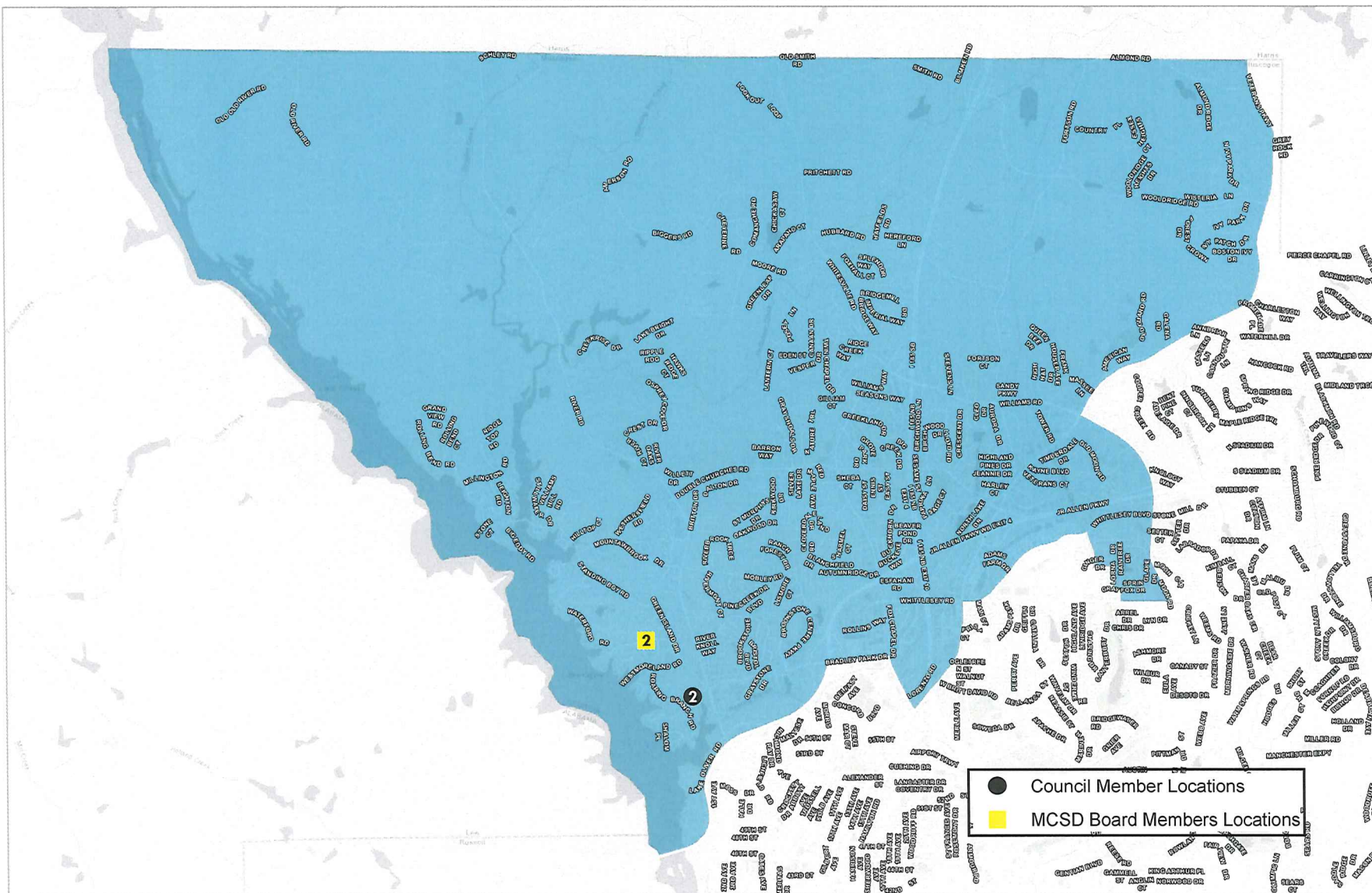
Planning Department  
Date: 2/3/2022



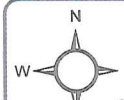


# Redistricting 2021 | State Recommendations | District 2

This material is made available as a public service. Maps and data are to be used for reference purposes only. The data contained is subject to constant change. Map information is believed to be correct but is not guaranteed.



Planning Department  
Date: 2/3/2022

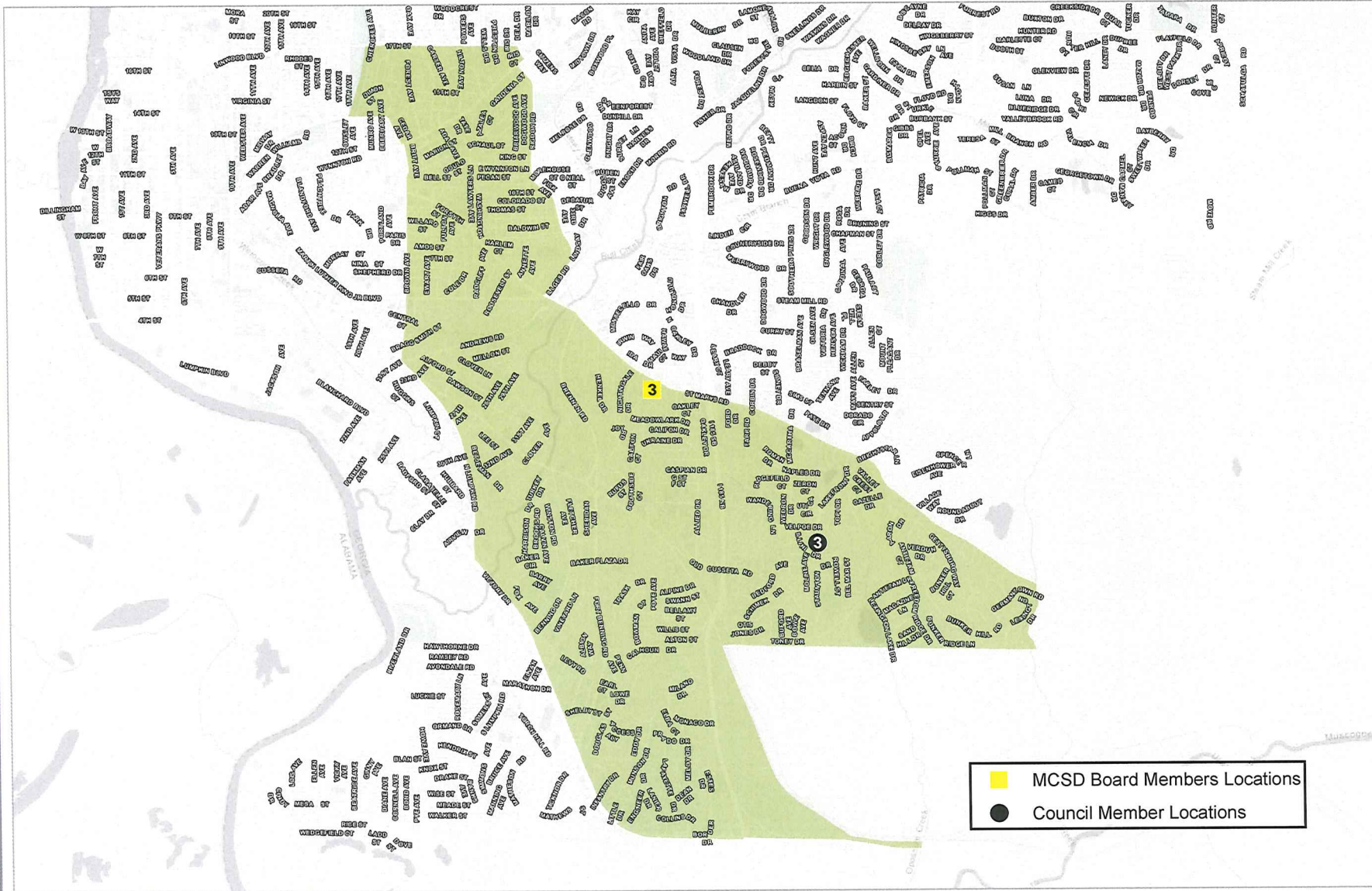


Not to Scale  
Projection: NAD 83  
Datum: State Plane GA West 1002



### Redistricting 2021 | State Recommendations | District 3

This material is made available as a public service. Maps and data are to be used for reference purposes only. The data contained is subject to constant change. Map information is believed to be correct but is not guaranteed.



- MCSD Board Members Locations
- Council Member Locations

Planning Department  
Date: 2/3/2022

PRETTE CITY  
COLUMBUS, MARIETTA, PEACHTREE CITY  
GOVERNMENT COMMUNITIES

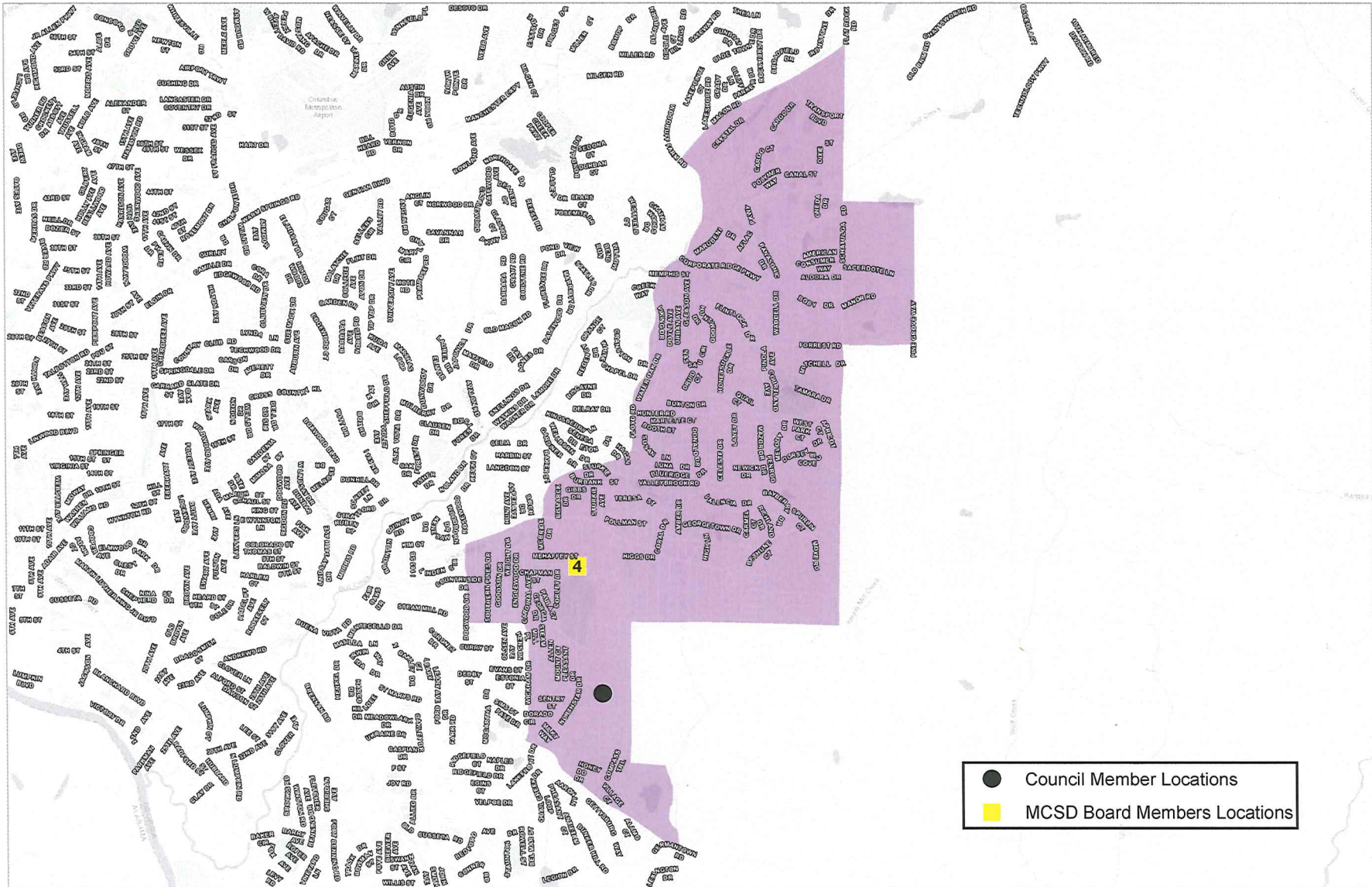
Not to Scale  
Projection: NAD 83  
Datum: State Plane GA West 1002

GA

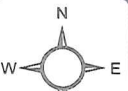


# Redistricting 2021 | State Recommendations | District 4

This material is made available as a public service. Maps and data are to be used for reference purposes only. The data contained is subject to constant change. Map information is believed to be correct but is not guaranteed.



Planning Department  
Date: 2/3/2022



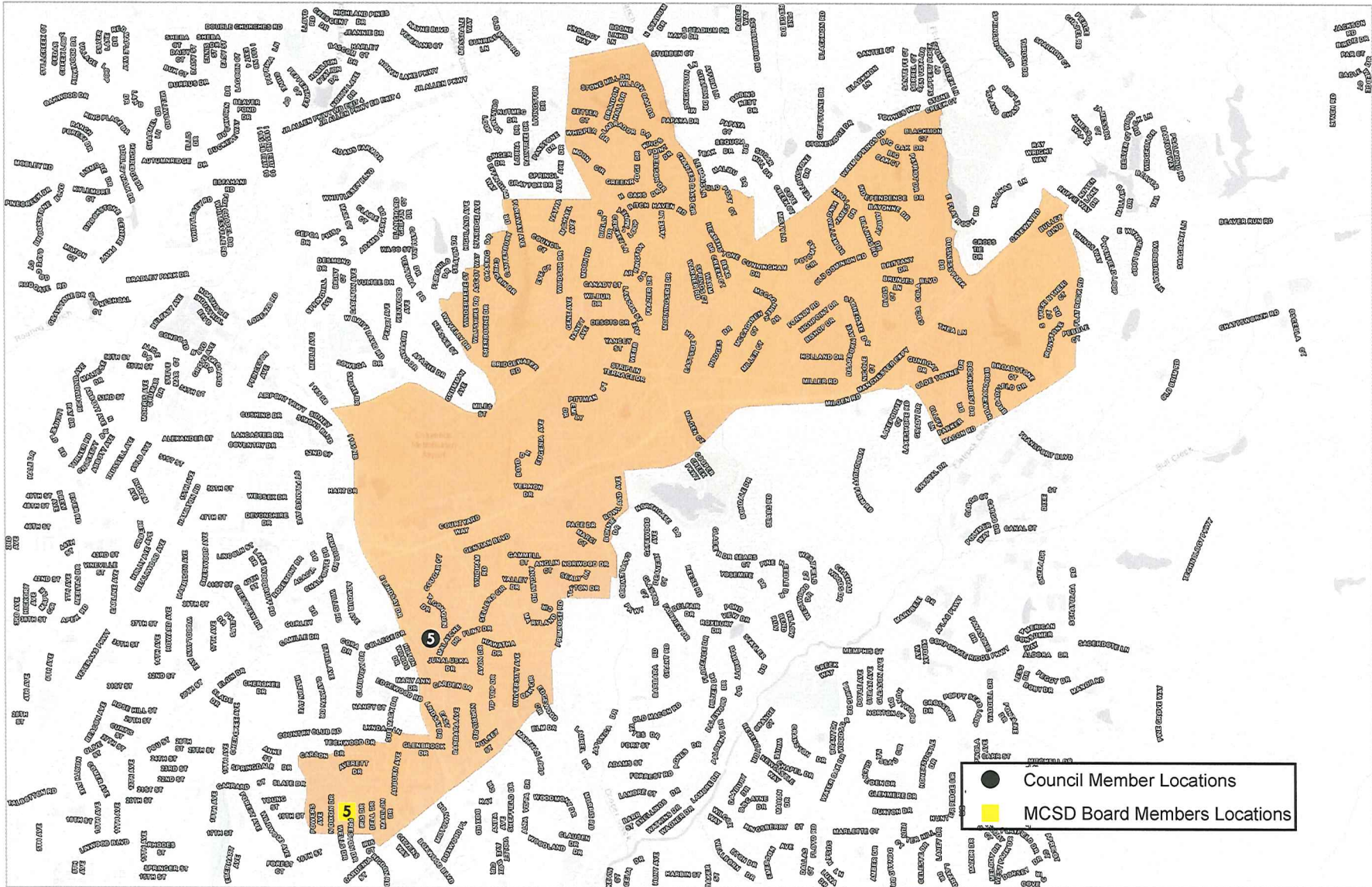
Not to Scale  
Projection: NAD 83  
Datum: State Plane GA West 1002





### Redistricting 2021 | State Recommendations | District 5

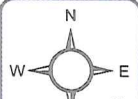
This material is made available as a public service. Maps and data are to be used for reference purposes only. The data contained is subject to constant change. Map information is believed to be correct but is not guaranteed.



- Council Member Locations
- MCSD Board Members Locations



Planning Department  
Date: 2/3/2022

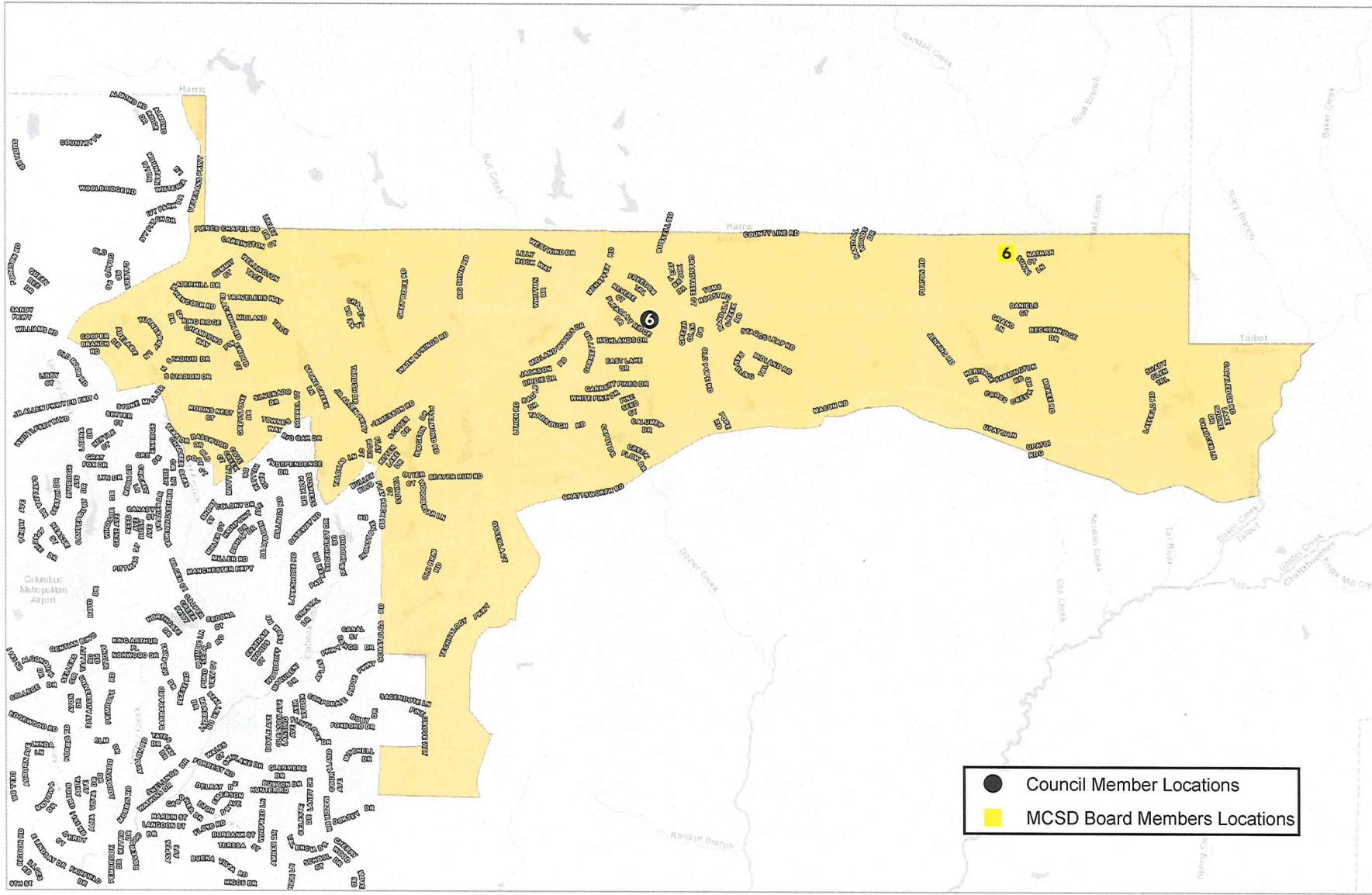


Not to Scale  
Projection: NAD 83  
Datum: State Plane GA West 1002



### Redistricting 2021 | State Recommendations | District 6

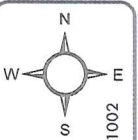
This material is made available as a public service. Maps and data are to be used for reference purposes only. The data contained is subject to constant change. Map information is believed to be correct but is not guaranteed.



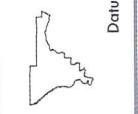
- Council Member Locations
- MCSD Board Members Locations



Planning Department  
Date: 2/3/2022



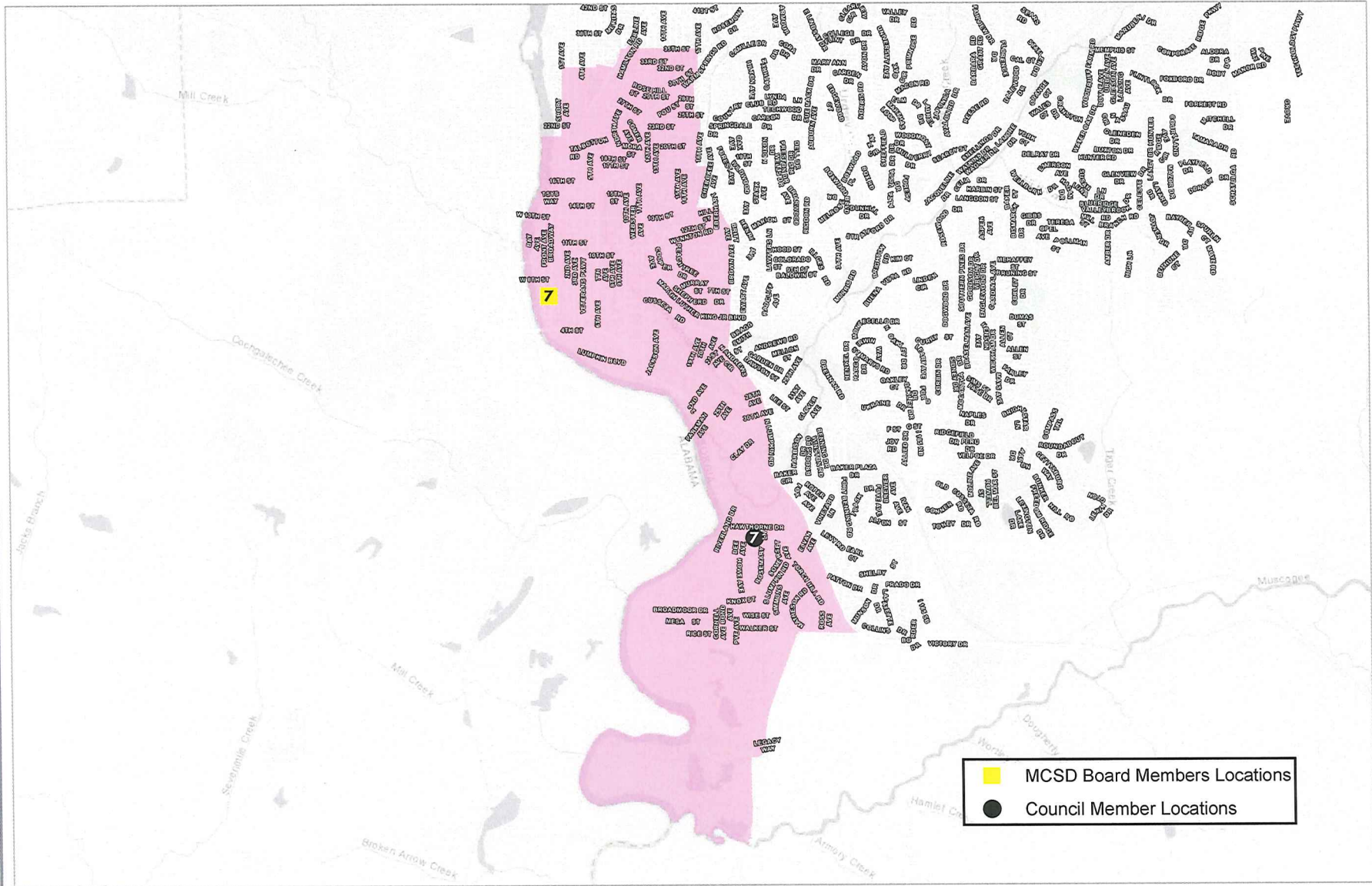
Not to Scale  
Projection: NAD 83  
Datum: State Plane GA West 1002





# Redistricting 2021 | State Recommendations | District 7

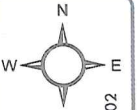
This material is made available as a public service. Maps and data are to be used for reference purposes only. The data contained is subject to constant change. Map information is believed to be correct but is not guaranteed.



- MCSD Board Members Locations
- Council Member Locations



Planning Department  
Date: 2/3/2022

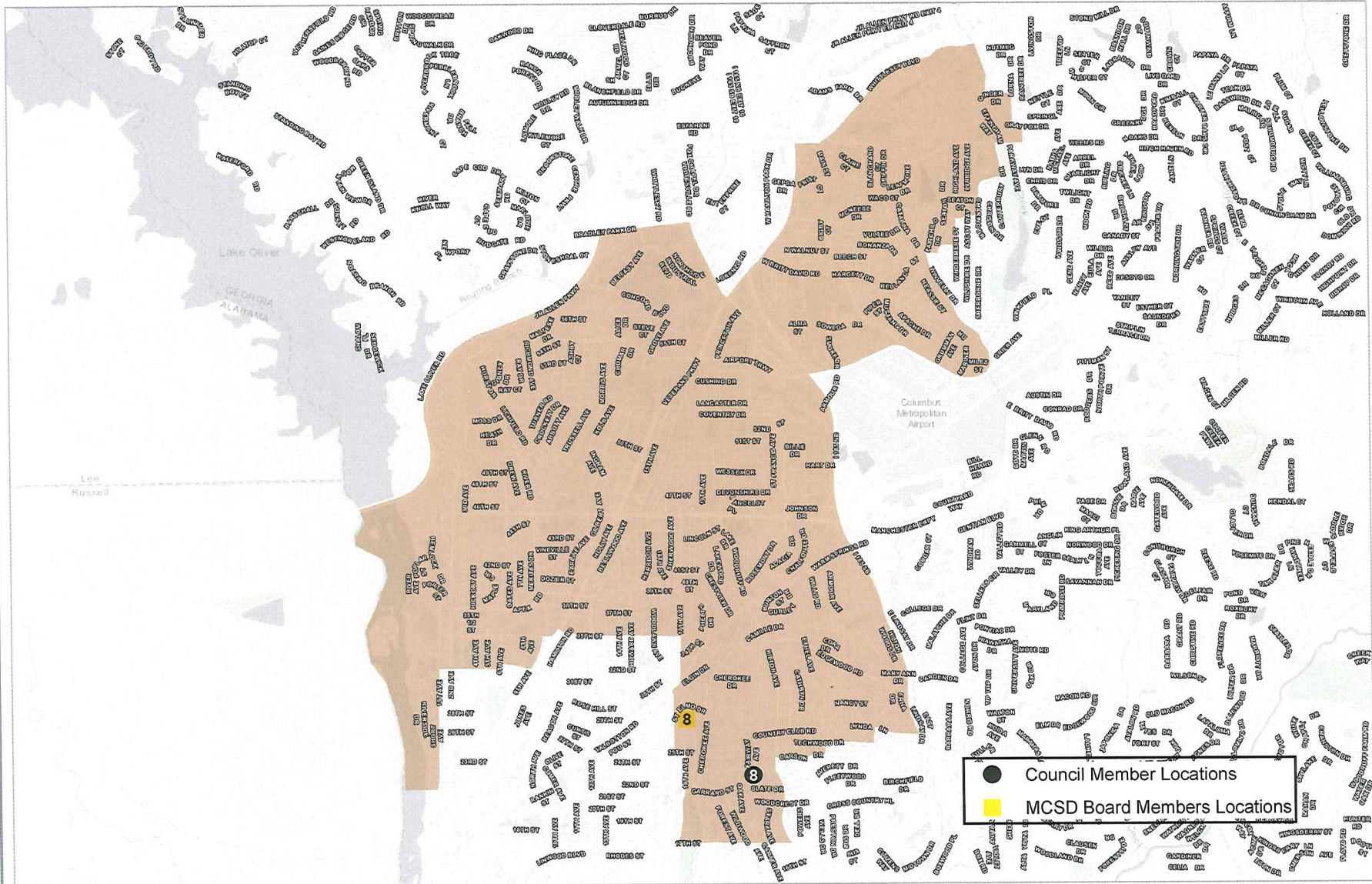


Not to Scale  
Projection: NAD 83  
Datum: State Plane GA West 1002 ft

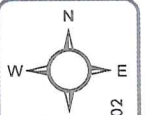


### Redistricting 2021 | State Recommendations | District 8

This material is made available as a public service. Maps and data are to be used for reference purposes only. The data contained is subject to constant change. Map information is believed to be correct but is not guaranteed.



Planning Department  
Date: 2/3/2022



Not to Scale  
Projection: NAD 83  
Datum: State Plane GA West 1002 ft

