

City of Columbus

Electric Vehicle Charging Review

Modern Community Amenity

Supports Clean Air Initiatives

Attracts Growing Segment of Drivers

Support Local Shopping & Dining

Connect Communities & Encourage Adoption

Electric Vehicle Charging 101

Level 1

110V

4 miles per hour charge
1.3kW

Level 2

208V

24 miles per hour charge
6.6kW

Fast Charging

480V

Fully charge in 5-60min
50kW, 150kW, 350kW

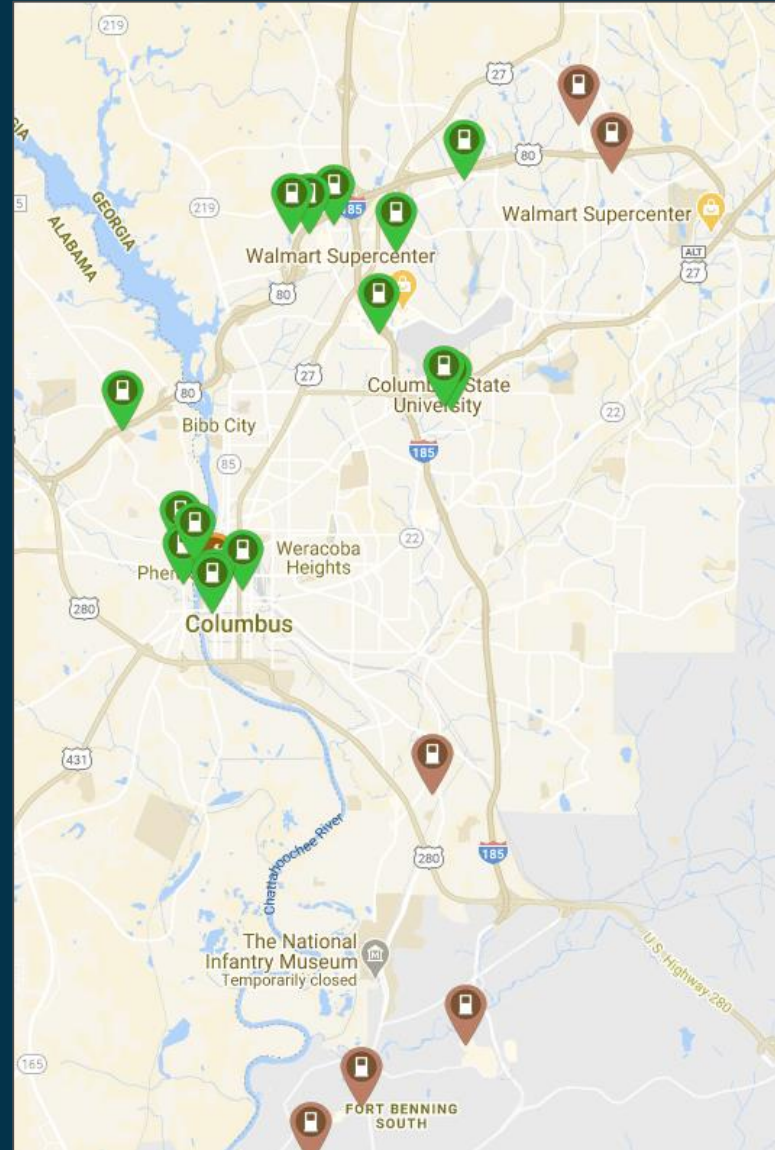
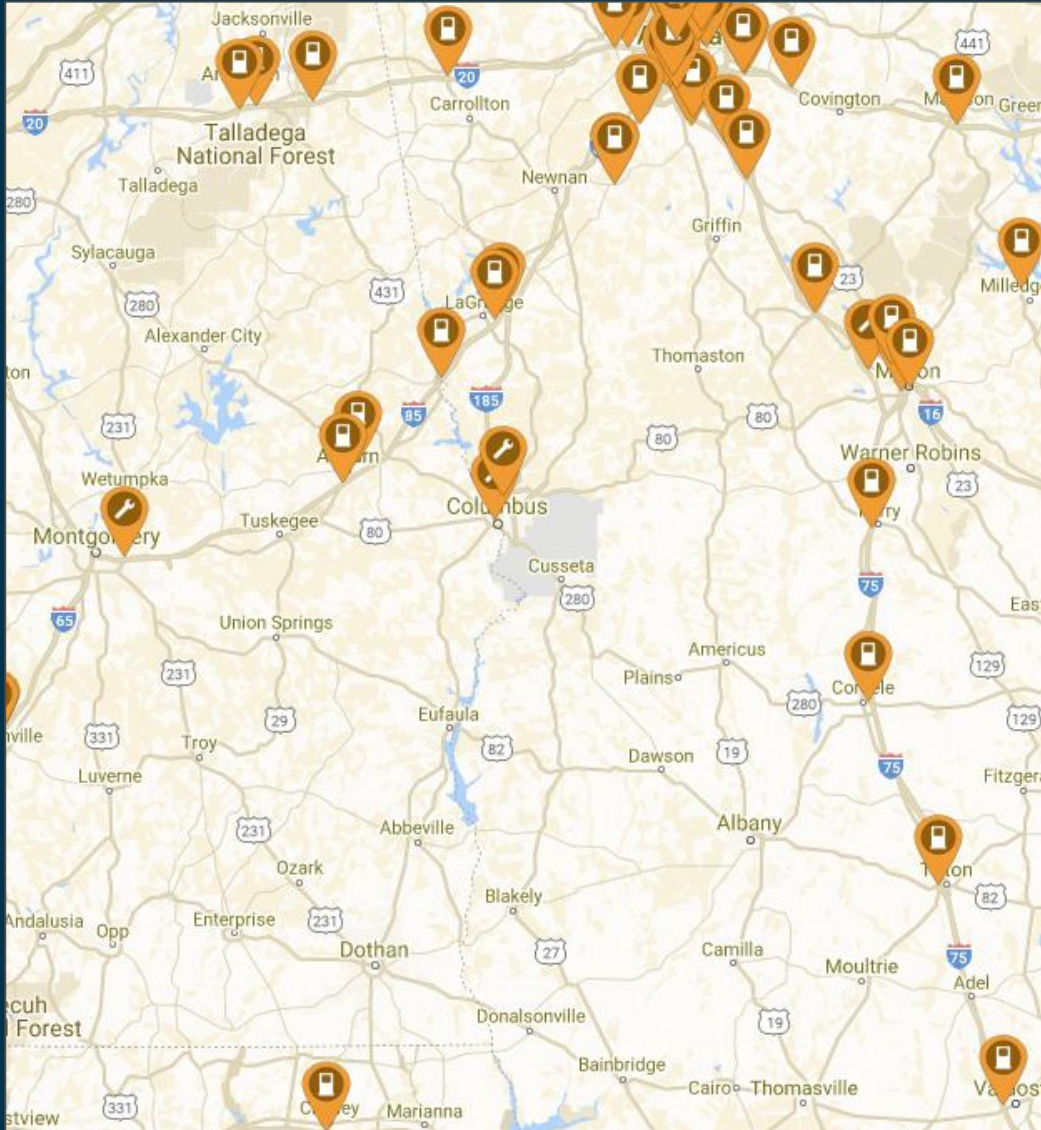


Networked

“Smart Charger”
User Account Required
Ability to set Pricing Policy
Generate Reports

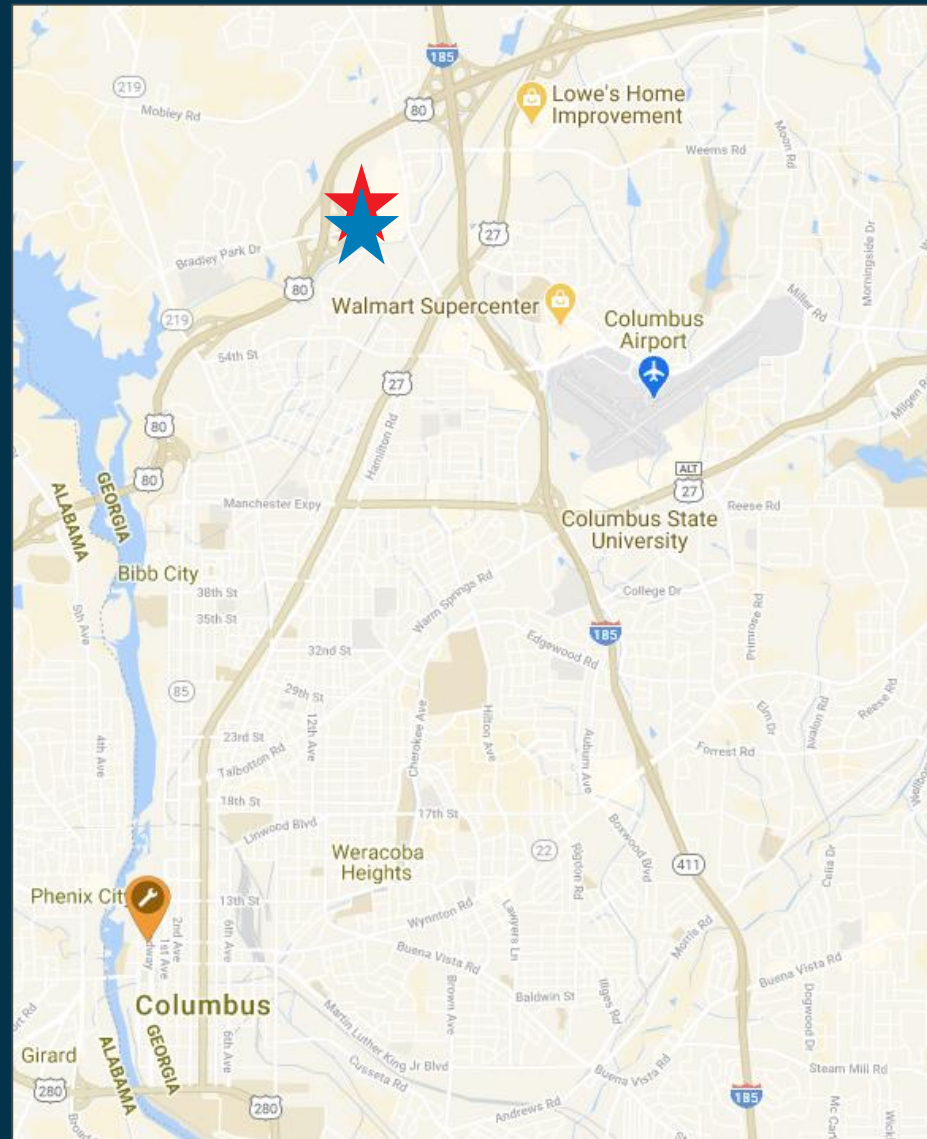
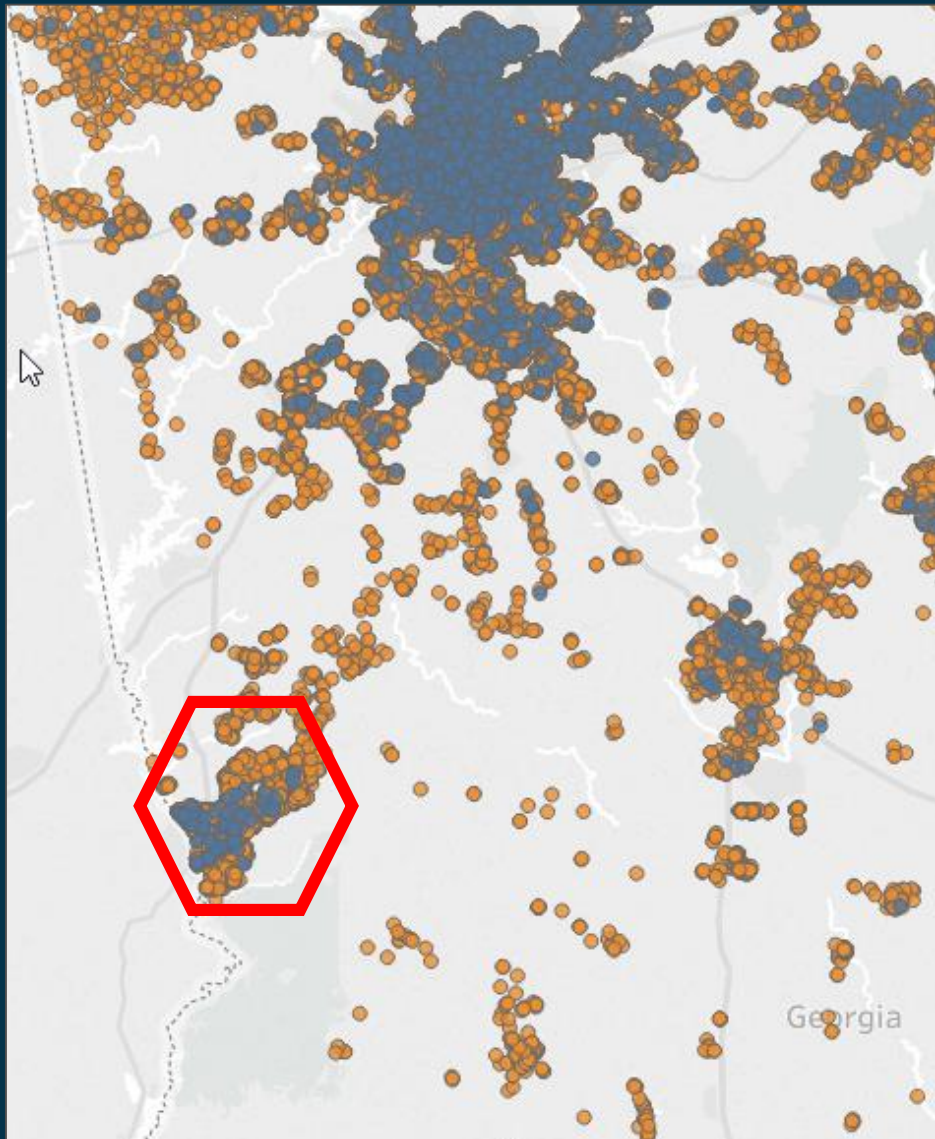
Communicate via cellular modem
24/7 Tech Support
Recommended Use: Public Facing

Current Charging Infrastructure



-  DC Fast Charger:
15-45 Min session
-  Level 2 Charger
1-3 hours session
-  Level 2 Charger
Restricted Access

EV Adoption & Pending Projects



Bradley Park Drive
Exit 3B

Georgia Power @
Burger King
Sept. 2020

Tesla Supercharger
@ Target.
Planned 2021

● Existing EV Registrations ● Predictive EV Registrations 2025

City of Columbus

Options & considerations for

Downtown Charging Repairs

Out of Service: 11th & Broadway



EV Charger donated to City of Columbus
By Headquarter Nissan 2015 + grant funding

Station has been nonfunctional for Year+
Warranty
Network
Costs

Ongoing negative driver experience &
reviews

Consideration for Replacement

Remove existing Equipment
Rebuild meter point & External Disconnect to Code
Install ChargePoint Dual Port Level2 Charger
5 year Vertically Integrated Network & Warranty Services
Futureproof with Capacity & Stub up for Expansion
EV Parking Stencil & Bollards

City contract with GPC
approved vendor – City
retains ownership

\$19,071

Georgia Power assumes as
part of Community Charging
Program

\$0

SMOKE

BOURBON AND BBQ

CHARGING
STATION
ELECTRIC CAR
PARKING ONLY
WILEY CHARGING
2-HOUR LIMIT



Other Opportunities Georgia Power Community Charger Program

Columbus I85 Exit 7:
Manchester Expressway

Columbus Civic Center

